



GHOST.

[WWW.VITTERS.COM](http://WWW.VITTERS.COM)

**VITTERS**  
S H I P Y A R D



Ghost has won three prestigious awards.  
A stunning result and a statement to the Owner, designer, our building team and everyone involved!



## ShowBoats Awards 2006



WORLD SUPERYACHT AWARDS:  
"Best Sailing Superyacht Performance"

SHOWBOATS INTERNATIONAL AWARDS:  
"Most Innovative Sailing Yacht"

INTERNATIONAL SUPERYACHT SOCIETY AWARDS:  
"Best Sailing Yacht Interior"





#### CHALLENGE, RADICAL, DIFFERENT, GHOST

Ghost, a 122 ft. ocean runner, is a very challenging, radical and different yacht designed by Luca Brenta & Co. Yacht Design. Ghost is a lightweight high performance yacht with a carbon fibre hull and superstructure. The metallic silver colour fits within a stylish minimalist concept. This minimalist concept adds another dimension to the construction and the development of the various components of the yacht.

It was not the first time Vitters was working on a light weight composite hull but it was surely the most challenging project in all aspects. The perseverance of everybody involved to achieve the overall goal resulted eventually in this magnificent yacht.



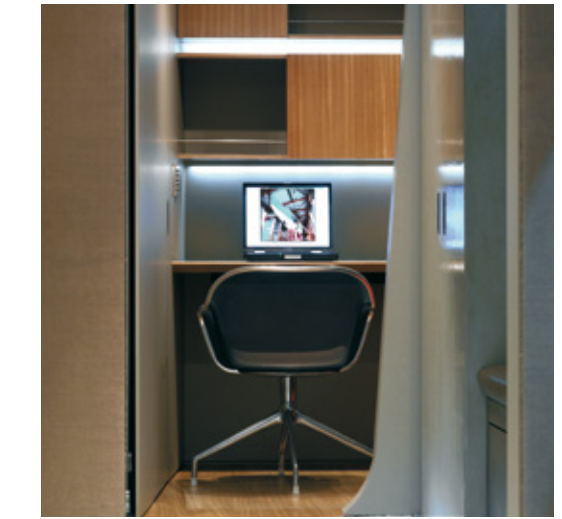
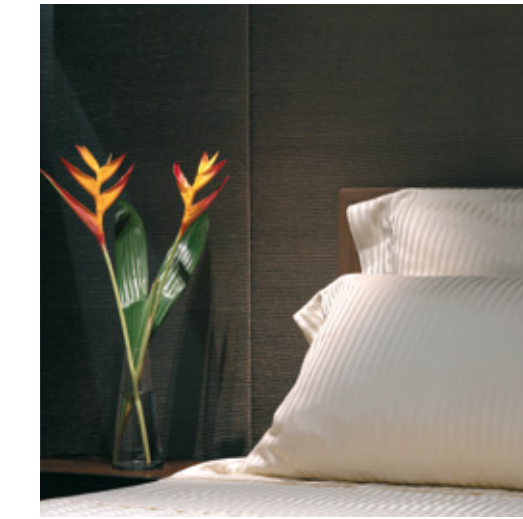
#### MAGNIFICENT, LIGHT WEIGHT COMPOSITE

One of the many eye-catchers on Ghost is the extended skylight panel that covers practically the entire length of the superstructure. The cockpit is seamlessly connected to the coach roof geometry both in terms of outside space and interior volumes, with the continuity also being evident in the design and layout of the two adjacent areas.



#### GHOST STEERING PANELS

The state of the art instrument panel is integrated in the central console. The panel can be retracted in a hidden position, when not in use. It contains screens for radar, chart plotter, the sail controls as well as the controls of the ships' monitoring system. One of the features of the instrument panel is the remote control for engine and variable pitch propeller. Having all the controls away from the steering pedestals leaves them very clean and minimalist.



#### BEAUTY IS IN THE EYE OF THE BEHOLDER

She is not only stunning but the yacht also performs extremely well, she sails perfectly under all conditions and has proven to be very fast on the water. As people say "Beauty is in the eye of the beholder", many people will have different ideas on the interior and exterior styling. It is new, it is fresh and has a lot of warmth in it. All aspects of modern comfort are covered and it is the true result of a passionate quest for the statement the owners wanted to make.



#### COCKPIT AREA

The interior theme was continued in the outside styling and furniture. Equipment is hidden, not to obstruct the view and to maintain the subtle harmony of materials and colours.

The main salon can be converted from main seating area to dining area. There is a big screen for movie watching integrated in the panelling. Like everything else these features are hidden from the eye when not in use.

There is ample room for eight having dinner or relax around the glass top table in the cockpit.



## INTERIOR

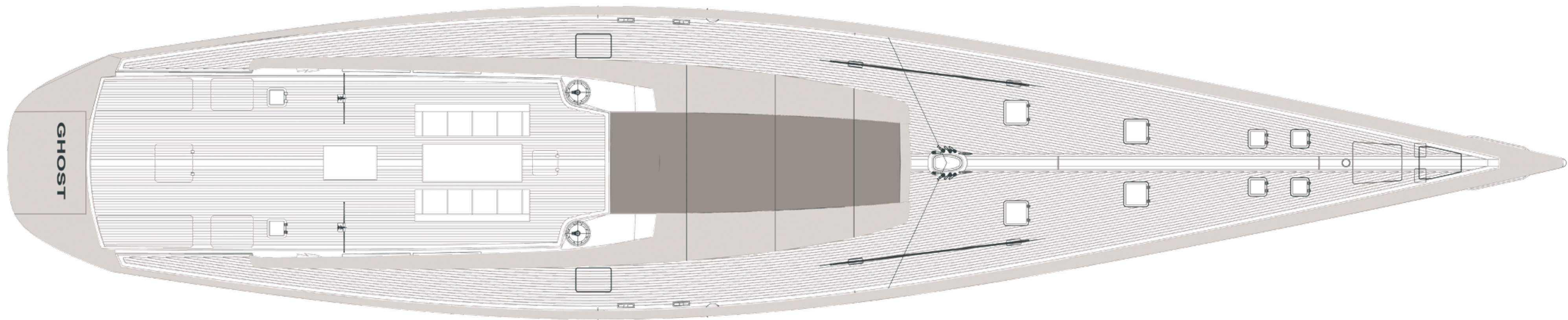
The galley and the crew area are in the aft part of the Yacht. There are three crew cabins, a galley with crew dinette and a chart table which also contains the switch boards for all functions on board. All navigation panels can be covered to create a crew area totally in harmony with the rest of the yacht.





#### THE COMBINATION OF OUTSIDE AND INSIDE

The outside furniture with the glass table reflects the subtle balance and equal importance of inside and outside comfort. The cockpit can be covered / shaded with the cabriolet bimini which offers the whole cockpit comfortable shade in sun "covered" areas.

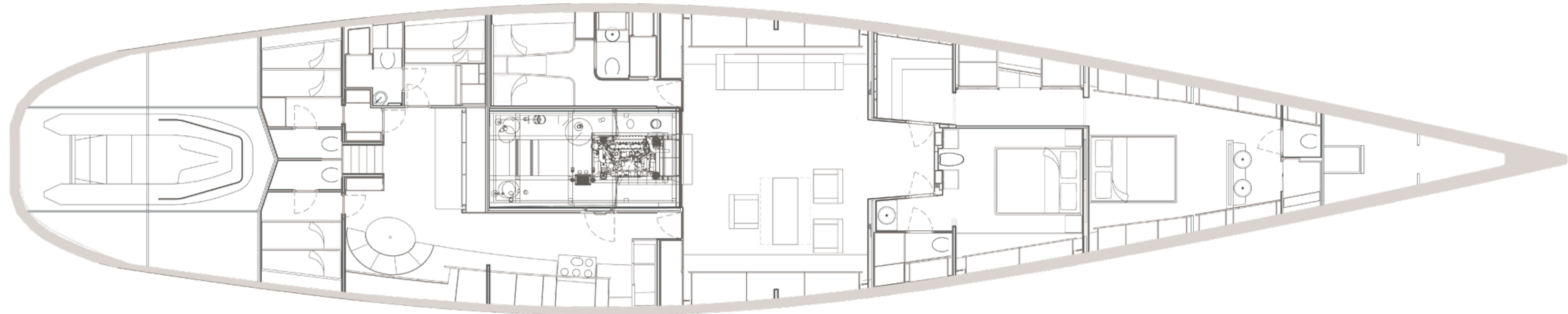


GHOST

## TECHNICAL SPECIFICATIONS

Type of ship	Sloop / ocean runner
Design	Luca Brenta & Co. Yacht Design
Interior design	Piero Lissoni
Owners' representative	Jon Barrett Associations, Inc.
Length over all	37.2 meter (122 ft)
Beam	7.5 meter (24 ft)
Draught	4.8 meter (16 ft)
Ballast	50 ton
Displacement lightship	110 ton
Hull/Superstructure	Carbon fiber pre-preg S.E. 84
Exterior paint system	Awl-Grip: Arctic Silver Metallic
Classification	DNV HULL Certificate

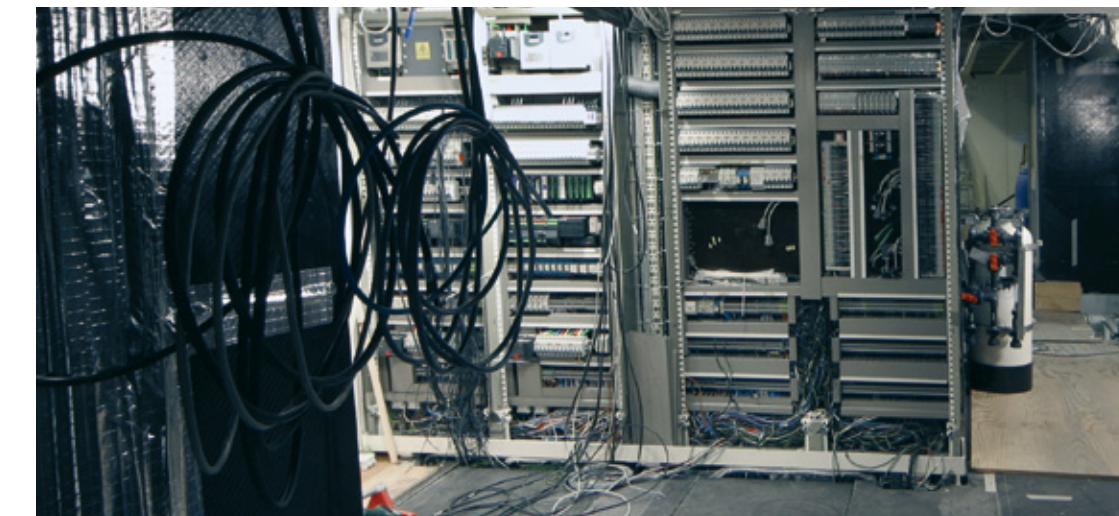
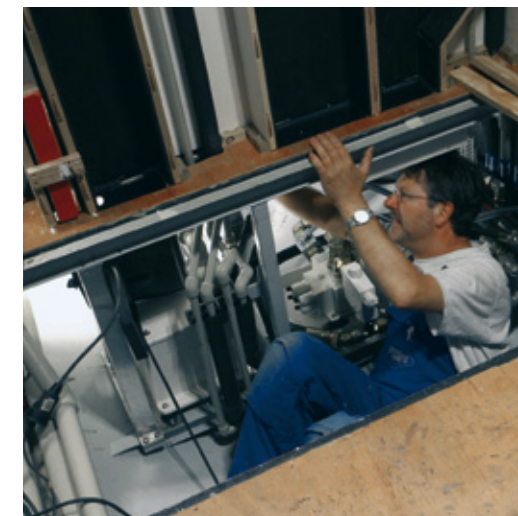




## TECHNICAL SPECIFICATIONS

Engine	Caterpillar 3196 C
Power	366 kW @ 2300 rpm
Gearbox	ZF 350 V-drive
Propeller	Amartech. 90 EHWS
Bow- & sternthruster	Folding thrusters - Hydrosta 60 kW
Fuel tank capacity	8.300 litres
Water tank capacity	4.500 litres
Generator	1 x ONAN MARINE 35MCGCA - 35 kW 1 x ONAN MARINE 22.5MDKAF - 22.5 kW
Spar	Southern Spars infurling boom, 46.6 meter (153 ft) above maindeck
Main mast	I: 45.7 meter (150 ft) P: 46.2 meter (152 ft) J: 13.7 meter (45 ft) E: 15.3 meter (50 ft)
Sails	North Sails 3 DL - Mainsail : 405 m <sup>2</sup> - Jib no. 3 : 325 m <sup>2</sup> - Gennaker : 1278 m <sup>2</sup>





## VITERS SHIPYARD

Vitters is a well-known builder of top quality yachts, improving with each project providing a comprehensive follow up service. Together with the crew each yacht is maintained in good order throughout its life.

At Vitters, quality means 'Exceeding what the client expects'. The team closely monitors the quality in every detail, whether that be technical finish or performance, to ensure the full satisfaction of the owner.

Even at the top end of the market, it is possible to improve with every yacht that is built. Therefore, we challenge our team to make each yacht better than the previous one, better but not more complicated. From the outset every individual is motivated to push their work to a higher level. A rigorous internal quality control and inspection procedure ensures results in both process and end product.

Service and support are vital during the lifetime of a yacht. Service and support are a priority at Vitters and we provide full assistance and take a proactive approach to ensure each yacht is kept operable, wherever in the world, to the satisfaction of her owner, guests and captain.



MARIE.

2010  
180 ft sailing yacht



LADY B.

2009  
147 ft sailing yacht



CINDERELLA IV.

2009  
128 ft sailing yacht



ADÈLE.

2005  
180 ft sailing yacht



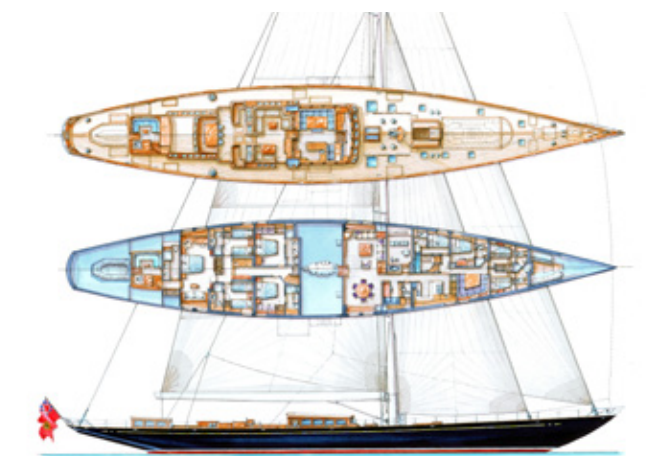
GHOST.

2005  
122 ft sailing yacht



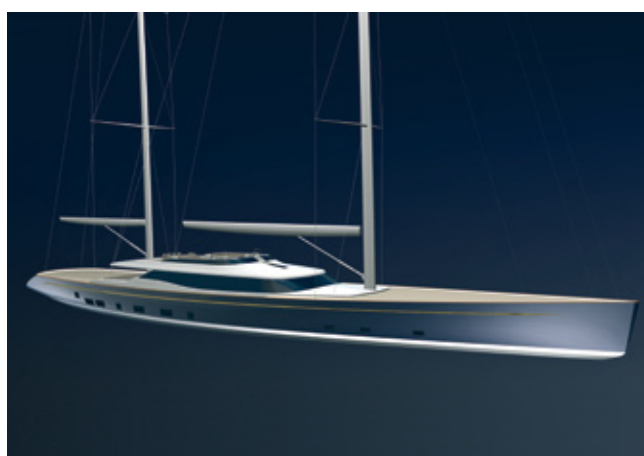
GIMLÄ.

2004  
140 ft sailing yacht



ERICA XII.

2008  
172 ft sailing yacht



NIRVANA.

2007  
176 ft sailing yacht



MYSTÈRE.

2006  
140 ft sailing yacht



WHIRLAWAY.

2003  
140 ft sailing yacht



RED DRAGON.

2002  
140 ft sailing yacht



TIMONEER.

2001  
147 ft sailing yacht



THAT'S Y.

2000  
100 ft sailing yacht



JULES VERNE.

2000  
61 ft motor yacht



APHRODITE 2.

1999  
142 ft sailing yacht



KALINGA. (REFIT)

1996  
172 ft motor yacht



FELICITA.

1996  
73 ft sailing yacht



NINEMIA.

1995  
96 ft motor yacht



MARGUERITE.

1999  
92 ft sailing yacht



DARDANELLA.

1998  
121 ft motor yacht



TIMELESS.

1997  
100 ft motor yacht



CAVO D'ORO.

1995  
59 ft motor yacht



TINTAGEL.

1994  
55 ft sailing yacht



CAMELIA.

1994  
96 ft sailing yacht





**THALIA.**

1994  
159 ft sailing yacht



**APHRODITE 1.**

1993  
93.6 ft sailing yacht

CREDITS

Photography

- Craig Davis Photography, Marblehead (MA), USA
- Gilles Martin-Raget - Photographe, Marseille, France
- Matteo Piazza - Photographer, Milan, Italy
- Max Ranchi Photography, Italy
- Maxi Yacht Rolex Cup 2005 - Carlo Borlenghi, Milan, Italy / Rolex

Concept, design and layout

- Oranja, Meppel, The Netherlands

Printed by

- Giethoorn Ten Brink, Meppel, The Netherlands



[WWW.VITTERS.COM](http://WWW.VITTERS.COM)

Vitters Shipyard B.V. - Stouweweg 33 - 8064 PD Zwartsluis - The Netherlands  
tel. +31 (0)38 38 67 145 - fax. +31 (0)38 38 68 433 - [info@vitters.com](mailto:info@vitters.com)