



Summer Newsletter



Jessie May
Children's Hospice at Home.



Since we last wrote, Jessie May has welcomed 7 more children to our caseload. Our nurses are now caring for 134 children in total, and also supporting 50 bereaved families.

While the families we support are at the heart of everything we do, we are always looking ahead to ensure we can continue to welcome families and avoid a waiting list. With an increasing number of families in need of our help, we need to raise more money than ever to fund the vital care our nurses provide. If you can support Jessie May in any way, you will truly be making a difference.

I'm thrilled to introduce you to some new faces to Jessie May in this newsletter, and also share some words from one of our nurses, Andy. We've also bid farewell to some members of the Jessie May team since the autumn, who have played a vital role at Jessie May and will be sorely missed.

As always, we have a fantastic line-up of events to add to your calendar too! We are delighted to have been selected as the Nominated Charity for this year's South Gloucestershire Show, which takes place on 4th and 5th August.

We're also hosting a Family Fun Day at Swindon Rugby Club on Saturday 4th August from 10am to 4pm, so come along for a fun fair, face-painting, bouncy castles, a dog show, live music and more!

If you'd like any information about Jessie May, please don't hesitate to get in touch.

Clara Ross

Hello and welcome

...to our Summer Newsletter.

We're thrilled to share our latest news, updates and events for your diary

Jessie May Nurse Andy

Andy has been a Jessie May Nurse for 5 years and cares for children across the South Bristol area. Andy was working with children already as a nursery nurse when he decided to go into a career in nursing. After he qualified, his first job was on the PICU (the Paediatric Intensive Care Unit).

Andy says “Some children on the PICU ward could be there for months, so I had the chance to get to know them and their families really well. There was one child I spent a lot of time with - we had such a battle getting him healthy enough to go home. That sort of piqued my interest in palliative community nursing.

One of my colleagues from PICU had moved to Jessie May, so I knew a bit about the charity already. It's a totally different environment to the ward. Now I get to build relationships with children and families and spend a lot more time with them. Jessie May also has so many activities for families to be involved in – we try and bring them together, so they can meet other families who are in similar situations. People hear the words “palliative care” and think it's all doom and gloom. That's not what the reality is like, though. Most of my job is awesome, having fun with great kids. The rest can be quite challenging at times – but whose job isn't?

A lot of my time is spent doing respite visits, which offer a much-needed break for parents. These 3-hour blocks may not sound like much, but they offer a lifeline to families.

Parents can use these 3 hours to do whatever they like, whether it be going to do the weekly shop, or have a date-night! They can spend quality time with their other children too, with the knowledge I am trusted and fully trained to care for their life-limited child.

Jessie May is the only provider of home respite services like this locally, which makes us quite unique across palliative care services. I feel incredibly fortunate to be welcomed into families' homes, and often feel like a real extension of the family.

Part of my job is to make sure that a family is prepared for when their child is at the end of their life. With the children we care for it's important that when it does happen the family's wishes are carried out. It's something that the family are never going to forget, so if we can help in making that experience as smooth as possible, then we can maybe make a difference in helping them grieve and heal. Because we've been there supporting families for sometimes years before their child passes away, we're in the right place to support them through that end of life period too, and after.

Jessie May is an incredible charity and I honestly feel I am in a privileged and humbling position as a Jessie May nurse.”



“I think what's special about Jessie May is the continuity of care.”

“I get to create amazing relationships with the families and support them through the good days, and the tough times.”

New faces and fond farewells

Welcome to:

We've said goodbye and welcomed new members to the Jessie May family over the past few months.

Goodbye to:

Liz Lewington

'We were all very sad to say goodbye to Liz after 17 years leading our Jessie May Nursing Team. Liz has contributed a huge amount to improving children's palliative care and provided vital support to so many children and families and Jessie May nurses alike. She will be badly missed and we wish her the very best with her retirement.'



Janet Bowman and Lynn Adams

'The Jessie May team had a wonderful goodbye picnic for Janet and Lynn, who are both retiring. Many thanks to you both, we wish you all the best for the future!'



Sarah Merritt
Trustee



Deborah Kesby
Head of Care



Miranda McGinn
Director of Corporate Services and Finance



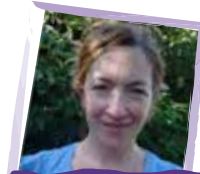
Vicki Clarke
Jessie May Nurse



Charlotte Ferguson
Jessie May Community Nursery Nurse



Sarah Cunningham
Jessie May Community Nursery Nurse



Vicki Cater
Jessie May Nurse



Justine Lovelock
Jessie May Community Nursery Nurse



Gemma Warren
Jessie May Nurse



Gemma Jenkins
Corporate Partnership Officer



Bethany Wash
Marketing Officer



We're now into our second year of a major project funded by St. James's Place Foundation, which has helped us fund Gillian, our Specialist Nurse for training and staff development.

The support from the foundation has meant we have been able to invest in

Gillian's role, a critical position for Jessie May. Gillian's role helps us ensure the quality of care provided by our nurses is maintained at the same high levels, despite the rising number of terminally ill children on our caseload. This funding has also enabled us to meet the rise in demand for training as we recruit more nurses to cope with the increase in referrals.

The training that each nurse needs to complete each year to remain up-to-date is extremely comprehensive. Gillian has responsibility for providing both core and extended Jessie May nursing staff with resuscitation, procedural and other life-saving skills so that they have the confidence and ability to cope in a medical emergency at home and to preserve life. We are proud to have a national reputation for providing exceptional care and support to children with life limiting conditions and their families in their own homes, and are incredibly thankful to St. James's Place Foundation for their continued funding and support.

"I feel incredibly lucky that I am now able to dedicate all of my time to ensuring the Jessie May nurses and families receive the highest quality evidence based education and care each and every day."

Specialist Nurse Gillian



Make us smile with Amazon Smile!

Jessie May has partnered with Amazon to help raise money for our nurses while you shop. AmazonSmile is a website operated by Amazon that lets customers enjoy the same wide selection of products as on amazon.co.uk.

The difference is that when you shop through the URL smile.amazon.co.uk, AmazonSmile will donate 0.5% of the net purchase price (excluding VAT, returns and shipping fees) of eligible purchases to the charity you select!

Select Jessie May as your charitable cause, carry on shopping as usual, and you'll be supporting our charity as you go – at no cost to you, or us. Get started at: <https://smile.amazon.co.uk>.

In Memory

Emily Pataj aged 8 years
Maya Issa aged 1 year
Dexter Liebow aged 8 years
Michael Jones aged 14 years

Make a gift in your will

Have you considered leaving Jessie May a gift in your will? People choose to remember Jessie May in their wills for a range of reasons, whether it be to remember a child, grandchild or other family member, or to support a local charity and leave a legacy with a good cause. Your support will mean Jessie May can continue helping terminally ill children and their families for the years to come. For more details on how to make an arrangement in your will, please contact our Fundraising Team on fundraising@jessiemay.org.uk

Make a gift in memory of someone

'In Memory' giving allows friends and family to celebrate the life of a loved one by donating to a cause close to their heart. There are many different ways you can give 'In Memory', from a Tribute Fund, that can continue growing in your loved one's name, to a single gift. If you are arranging a funeral or memorial service for a loved one, you may wish to ask friends and relatives to donate to Jessie May instead of buying flowers. Please email our fundraising team if you would like to support Jessie May in this way, or would like to discuss 'In Memory' giving.'

Thank
you

To Clifton Shopping Centre who have named us their Charity of the Year

To David Wilson Homes for choosing us as their Charity of the Year and their continued fundraising support

To World Snooker who have chosen Jessie May as their Charity of the Year for 3 years consecutively

To the Canadian Imperial Bank of Commerce (CIBC) for choosing Jessie May to be one of their charity partners for a second year, raising much needed funds for our work in Swindon and Wiltshire

To Persimmon Homes for choosing to support Jessie May through their community champion scheme in May

To the St John's Foundation and the Annett Trust for supporting the provision of our hospice at home service in Bath

To the Morrisons Foundation for funding our Making our Fun Possible Programme this year

To Zurich in Bristol for their incredible support for so many years

To Jack Lane for supporting new referrals in North Wiltshire

To The Nisbet Trust for supporting our Bereavement Work

To the John James Bristol Foundation for helping us to accept new referrals in the Bristol area this year

To Portishead Nautical Trust for funding family respite visits in the Portishead area

To the Masonic Charitable Foundation for helping us to support local families in their own homes

To the St James's Place Charitable Foundation for investing in our training programme for nurses

Community Stars

We're so grateful for all of our community volunteers and supporters who give up their time and money to support Jessie May. From schools to pubs, and groups to individuals, our supporters are helping make a difference to all the families on our growing caseload.

Thank you...



...to Bristol University Galenicals Society who raised money for Jessie May by holding a Pre-Clinical Revue Medical Play at The Fleece.

...to everybody who has put on a purple vest and run 10ks, halves and marathons for us!



...to Claremont School who held a Get Messy for Jessie Day



...to Sarah Jayne Pullinger, a nurse specialist who asked for donations to Jessie May for her birthday and raised money through a Facebook fundraiser

...to Julie Stone who also raised money for Jessie May through her birthday this year!

... to Hilmarton Scarecrow Festival committee and festival-goers who fundraised for Jessie May!



...to Duncan Self Hire Swindon & Melksham who are helping spread awareness of our charity by adding the Jessie May logo to their complete fleet of vehicles!

...to Winterbourne Academy for showing their talents and raising money during their fantastic Talent Show!

...to Castle Coombe Steam Rally for their support and choosing us as their chosen charity again!

Thank you to our Caring @ Work supporters!

BAWA Healthcare and Leisure
Blackstar Solutions
Chameleon Products
City Financial Planning Limited
City West Commercials
DM Thomas Foundation
Ergochair
Handelsbanken
Hayes Parsons
IAP UK Ltd
Imtech
Knorr-Bremse
LoknStore Storage
Mayfair Town & Country
Nuttall

Regency Offices
Renishaw
Rise Technical
Rotork
SpiderGroup
Willow Chiropractic
Sweco UK
Taylor Woodrow
Thrings Solicitors
Wealth West
West Country Vending
What's Right
DoubleTree by Hilton Bristol North
ACC Freight Management Ltd
NSBRC
Paul Bailey Executive Cars Swindon
David Wilson Homes
Unitary Engineering Services Limited
Piston Pokers Swindon
Move and Store
Park Insurance
Queen Square Chambers

Calendar of events

To find out more about any of our upcoming events, visit www.jessiemay.org.uk/events or contact our Fundraising team!



Say hello at
the South
Gloucestershire
Show!

The South Gloucestershire Show will be celebrating its 5th anniversary this year and we're thrilled to have been chosen as the show's nominated charity!

The event takes place on August 4th and 5th, bringing together over 250 exhibitors to the showground, where you can find exhibit areas such as health and well-being, and food and wine. With events like classic cars and motoring competitions to an all-day music festival, the weekend's going to be a wonderful spectacle for the whole family.

Come along and say hello to the Jessie May team at our stand! The show is held at the South Gloucestershire Showground, Westerleigh Road, BS37 8QZ. Gates open at 10.30am on both days and the fun goes on until 8.00pm.

