



SD4 SECURITY & BLAST DOOR

Fully **CE** compliant.

Tested to EN14351-1 product compliant standard

Industrial Door Engineering Ltd SD4 Security Doors are designed to protect medium to high risk properties from experienced attempts at forced entry, regardless of noise, using heavy hand and battery tools or explosives.

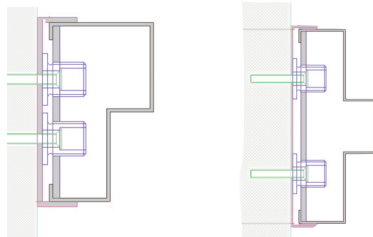
DOOR LEAF

Thickness:	50mm
Material:	1.5mm corrosion resistant Zintec/Aluzinc sheets as standard, wide variety of colours and finishes are available.
Infill:	Solid timber cored with internal stainless steel anti-attack skin.
Construction:	Doorblade manufactured from two 1.5mm sheets lockformed together, by bonding two steel skins around a rigid core. Additionally fitted with a 1.5mm steel sheet to the internal face of outer skin. A total steel armour thickness of 4.5mm. Fitted with integral lock box.
Astragal:	Blade fitted with an anti-jemmy astragal.

DOOR FRAME

Construction:	Folded and welded from 2mm Zintec/Aluzinc. Specially modified, variable sub-frame supplied as standard to accommodate site tolerance of -0/+30mm. The sub-frame providing additional protection to the fixings against jemmys. Fitted with stainless steel dog bolted continuous hinge for additional security.
----------------------	---

Profile:

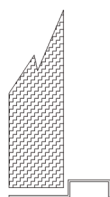


Type C

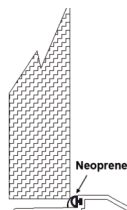
Type D

THRESHOLD

Standard:	15mm rebated threshold.
Optional:	12.5mm 564A Aluminium (DDA compliant)



Standard



564A

FINISHES

Standard:	Polyester Powder coated from Standard Colour Range.
Optional:	Polyester Powder Coating from non-standard colour range. Unfinished for site finishing.

SIZES

Size:	Doors are custom manufactured in 10mm increments for single openings 690mm to 1390mm and double openings 1290mm to 2600mm, at heights up to 2900mm. Contact sales@industrial-door-eng.co.uk for special configurations and finishes.
--------------	---





SECURE LOCKING

Locking: A centre High Security WAAA1100 Sashlock combined with two similar Deadlocks in the upper and lower quarters of the door. All locks fitted with anti-jemmy escutcheon and welded shroud. Locks are anti-drill and pattern protected to reduce risk of key copying. Mico and Surelock can also be used. Doors are fitted with Exidor tower bolts.

Alternatively high security multi-point heavy duty panic hardware for fire escapes.

THERMAL 'U' VALUES

With in-fill as detailed a thermal value of 2.9 w/m²k is obtainable.

ACOUSTIC VALUES

With in-fill as detailed an acoustic value of 23 w/m²k is obtainable.

APPLICATIONS

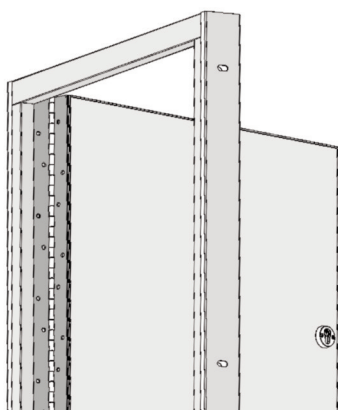
Duty: Heavy duty and vulnerable properties, probably with a prior record of attempts at forced entry.
Protection from experienced attempts at forced entry of commercial properties with no regard for noise.
Further the door is suitable for protection against attempted entry by explosive blasts.

Note:
All duty recommendations assume the doors are used in conjunction with other comparable levels of security at windows, etc.

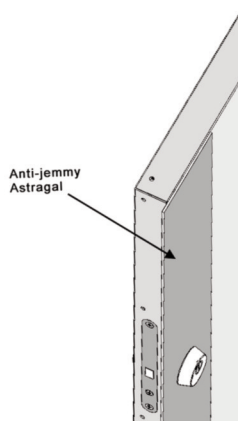
TESTING

Tests: SECURITY Tested to BS 1627 level 4
The test involves a determined attack over a period of 30mins. using a selection of hand and battery tools including club hammer, cordless drill, cold chisel and axe.
(see 'Practical Attack Element of Test for full details'.)
Locks Anti-drill tested to BS EN 1303 Security grade 6.

BLAST SD4 doors have been tested and passed EXR2 of BS EN 13124-2, Explosion Resistance standard, with explosive blasts using plastic explosives.



SD4 Full Height Continuous Hinge



SD4 Anti-Jemmy Astragal

