



From Marshall-Tufflex

100Amp Voltage Optimiser

For buildings with single phase supply and load up to 100Amps

The easiest way to save money on your electricity bills



Save money on your electricity bills



Reduces energy waste and carbon footprint



Increases the life of appliances



Easy to install by a qualified electrician

How does Voltis work?

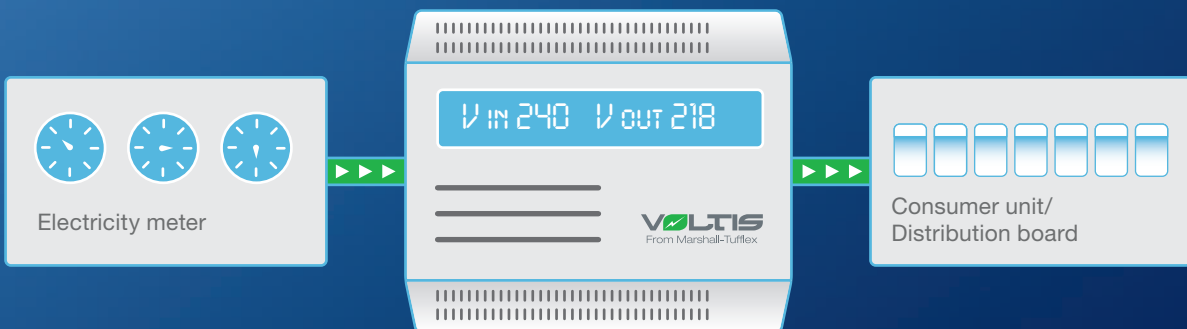
In the UK, electricity is supplied at around 240Volts, which compared to most countries is high. Electrical appliance manufacturers produce electrical products to work across a wide voltage range, anywhere between 207Volts and 253Volts. Supplying appliances at a higher voltage wastes energy so as well as costing money and being unfriendly to the environment, appliances can wear out more quickly. Whilst the appliance can cope with the additional energy it will typically deal with this through generating either excess heat vibration or light dependant on the type of appliance.

By installing a Voltis unit, voltage will typically be reduced to around 218Volts, ensuring all appliances and circuits run perfectly well. Electricity bills are substantially lower and appliances will have a longer life span.



What is Voltage optimisation?

This is a well-established, proven technology which is based on using transformers. Although appliances will cope with a high voltage supply, voltage optimisation reduces excess supply voltage to match the ideal operating level, enabling them to run more efficiently, reducing wasted energy and saving money.



Without Voltis



Incoming voltage from National Grid.



Average level that electricity is supplied in the UK is 240V.



Maximum voltage = shorter lifespan for appliances.



Excessive voltage = excessive electricity bills.

With Voltis



Voltage optimisation reduces power to around 218V.



Optimised voltage = longer lifespan for appliances.



Reduced voltage = reduced electricity bills.



Reduced carbon emissions.

The new Voltis 100Amp unit is suitable for any building with a single phase supply and load of up to 100Amps such as:

-  Large residential properties
-  Retail units
-  Hotels
-  Pubs and restaurants
-  Offices
-  Care/medical facilities

Voltis can be purchased nationwide through all major electrical wholesalers. The unit is positioned between the electricity meter and consumer unit and installation must be carried out by a qualified electrician. Once installed the unit is maintenance free and will offer immediate savings.

We recommend that the incoming voltage and main fuse rating is checked prior to installation. Should the incoming voltage be below 230Volts, the 100Amp Voltis Unit will not be suitable. Contact our Technical hotline on 01424 856688 for further details.

Product Specification

Product Code	VH1001
Temperature range	-10 to 40°C
Humidity	Up to 90%
Dimensions	420mm wide x 360mm high x 195mm deep
Weight	33kg
Rating	100Amps Single Phase
Suitable for incoming voltage of	230-253V

To save money on your domestic electricity bill visit www.savepowerathome.co.uk

Marshall-Tufflex Ltd
Churchfields Industrial Estate Hastings
East Sussex TN38 9PU

Telephone: 01424 856600
Email: sales@marshall-tufflex.com

www.marshall-tufflex.com

