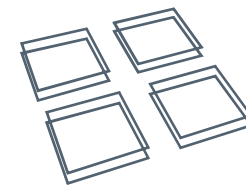




healthcare portfolio

studio four architects ltd
www.studiofourarchitects.com



ROMSEY

WINCHESTER

SOUTHAMPTON



our work



teenage young adults
southampton general hospital



helipad
southampton general hospital
st.mary's, isle of wight



outpatients department
frimley park hospital



sterile supplies department
st.mary's, isle of wight



WISH laboratories
southampton general hospital



emergency department
southampton general hospital



childrens hospital
southampton general hospital



east wing annexe
southampton general hospital



day surgery unit
southampton general hospital



diagnostic treatment centre
royal hampshire county hospital



neonatal unit
princess anne hospital



haematology units
southampton general hospital

practice profile

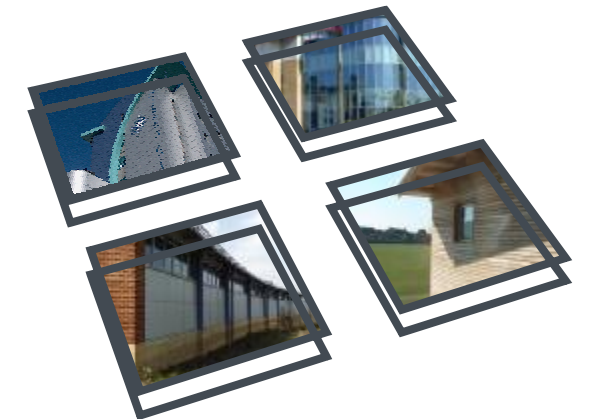
Studio Four Architects is a medium sized architectural practice based in Hampshire. With offices in Romsey and Winchester and a staff of over 40 we can provide a reliable and well resourced service. We listen to our clients and provide solutions which meet budget and operational needs with design flair. We foster relationships of co-operation with all members of the design and construction team. We respond quickly and provide staff who are knowledgeable and confident in dealing with design and detail issues.

We are proud that the majority of our work is from our Clients returning again and again, showing the high level of satisfaction and good working relationships we strive to achieve. Studio Four Architects was founded in 1992 in Romsey by George Rankin and Nick Lockyer, with Mike Brownlow joining in 1993. The practice has steadily expanded its base and workload and now enjoys a wide variety of projects. Alongside significant healthcare experience, we have completed many projects in other sectors including education, housing, leisure, retail/commercial, church and community-based schemes. The Winchester office was opened in 1997 to serve a growing number of clients in the Winchester area. Both offices work together to share resources, expertise and training opportunities. In 2012, Studio Four Specialist Projects was formed to provide services focussed around conservation, specialist architectural projects and building surveying.

In 2013 the practice merged with Chris Edmond Associates, architects and interior designers, based in central Southampton. Chris Edmond Associates has provided Architect's services for over 30 years to clients in Southampton and the surrounding counties. These have included developers, housing associations, local authorities, private businesses and householder clients. Whilst specialising in the residential market with projects ranging from inner city apartments to bespoke high quality houses, the practice also works with urban renewal projects, listed buildings and has designed a number of community buildings including yacht clubs, golf clubs and commercial start-up units.

A wide range of architectural services are provided for all project stages, including:

- Planning opportunities and feasibility studies
- Brief preparation
- Full architectural duties
- Design team leadership
- Principal Designer duties
- Design & Build co-ordination
- Site inspection
- Interior design
- Maintenance advice
- Physical models and 3D modelling
- Measured surveys
- dilapidation and/or condition surveys
- Party Wall matters
- Listed Building Refurbishment & Development



our clients

Our healthcare clients over recent years have included:

- Andover Healthcare Trust
- Assura
- Basingstoke North East Hampshire Healthcare Trust
- The Border Practice, Aldershot
- Camrose Medical Practice, Basingstoke
- Chawton Park Surgery, Alton
- Chessel Practice, Southampton
- Colten Developments
- Community Solutions
- Crown Heights Medical Centre
- Dorset Healthcare NHS Trust
- Euromedic plc
- Fareham Dental Practice
- Frimley Park Hospital Trust
- Hampshire Lift Co
- Hampshire PCT
- Hampshire Partnership NHS Trust
- Harbour Medical Practice, Eastbourne
- InHealth
- Isle of Wight Primary Care Trust
- Medicx
- MENCAP Homes Foundation
- Naomi House
- NHS Property Services
- North & Mid Hampshire Health Authority
- North Hampshire Hospital NHS Trust
- Geoffrey Osborne Ltd
- PMP Health Developments
- Poole Hospital NHS Trust
- Portsmouth Hospitals NHS Trust
- Portsmouth Healthcare Trust
- Rok Construction
- Royal Bournemouth & Christchurch Hospitals Trust
- Salisbury Healthcare Trust
- Salisbury Road Surgery, Southsea
- Sapphire Primary Care Developments
- Southampton City PCT
- Southampton Community Health Services Trust
- Southampton & SW Hants Health Commission
- Southampton University Hospitals NHS Trust
- Southbourne Surgery
- Southern Health NHS Foundation Trust
- South Devon Health Trust
- St Paul's Surgery, Winchester
- States of Jersey Health and Social Services Department
- Sunnycroft Care Home
- Sussex Partnership NHS Foundation Trust
- Teenage Cancer Trust
- Titchfield Dental Health
- West Dorset Community Trust
- West Dorset General Hospitals NHS Trust
- Western Sussex Hospitals NHS Trust
- Wessex 'Heartbeat' Cardiac Trust
- Winchester City Council
- Winchester & Eastleigh Healthcare NHS Trust

Teenage Young Adults, Southampton General Hospital

teenage cancer ward

Completed on site in July 2013 the state-of-the-art Teenage Young Adult Unit at Southampton General Hospital have now been opened, to better meet the needs of young cancer patients.

This ten bedded unit will enable young cancer patients aged 16 to 24 living in Hampshire, Dorset, the Channel Islands, South Wiltshire, Isle of Wight and parts of West Sussex, to be treated for the first time with others their own age in an environment suited to their needs. So that the particular needs of teenagers and young adults are met, a group of former and current young cancer patients are working with the Design Team to advise on the design and colour themes and also what furniture and entertainment equipment should be included within the scheme.

Working with the Trust Architect, Studio Four successfully handed over this complex project to the Teenage Cancer Trust on time, and on budget in July 2013.

Photos by Kier / Studio Four Architects Ltd.

PROJECT VALUE: £1.5 MILLION APPROX.

STAGE: COMPLETED JULY 2013

CLIENT: TEENAGE CANCER TRUST / UNIVERSITY HOSPITAL SOUTHAMPTON NHS FOUNDATION TRUST



Helipad, Southampton General Hospital

Studio Four designed a heli-pad capable of accommodating the largest helicopters used in civilian rescue.

Currently located on the upper deck of the car park at Southampton General Hospital, it has been designed to be relocated to the roof of the completed East Wing Annexe at some future date

(photos courtesy of Guy Marturano of golley slater)

PROJECT VALUE: £1.2 MILLION

STAGE: COMPLETED DECEMBER 2011

CLIENT: UNIVERSITY HOSPITAL SOUTHAMPTON NHS FOUNDATION TRUST

Helipad, St.Mary's Hospital Isle of Wight

Isle of Wight NHS Primary Care Trust has a Site Development Strategy for the St. Mary's Hospital campus on the Isle of Wight. The strategy will enable the development of the campus to maintain and enhance its role as:

- The District Hospital for the population of the Isle of Wight;
- A designated Trauma Unit.

In order to be classified as a designated Trauma Unit it is a requirement that direct helicopter access is available to the Hospital campus.

The helipad will be used for both primary and secondary transfers, approximately 12no per month.

STAGE: COMPLETED MAY 2013

CLIENT: ST.MARY'S HOSPITAL ISLE OF WIGHT



Outpatients Department, Frimley Park Hospital

Studio Four Architects were commissioned to design internal alterations to the existing Outpatients Department at Frimley Park Hospital and provided full Architectural and Lead Consultant duties for this busy unit with a throughput of over 100,000 patients a year. Work involved updating the accessible WCs, staff areas and Utility Rooms. The waiting area was upgraded with a new reception counter and bespoke nurse stations and a small extension was created within an existing courtyard to overcome privacy issues with patients waiting in corridors outside Consulting Rooms.

PROJECT VALUE: £1.2 MILLION

STAGE: COMPLETED AUGUST 2009

CLIENT: FRIMLEY PARK HOSPITAL NHS FOUNDATION TRUST



Sterile Supplies Department, St.Mary's Hospital Isle of Wight

Studio Four designed a new build 2 storey block adjacent to the main hospital providing a new HSDU department on the ground floor plus an additional floors accommodation for future fit out. Plant facilities are provided on the second floor facilitating the whole building independently.

PROJECT VALUE: £3.2 MILLION

STAGE: COMPLETED JANUARY 2010

CLIENT: ISLE OF WIGHT NHS PRIMARY CARE TRUST



WISH Laboratory, Southampton General Hospital

Studio Four were appointed to design this laboratory fit-out project situated on Level F of the Biomedical Research Unit (BRU) at Southampton General Hospital.

Now complete, the Wessex Investigational Sciences Hub (WISH) project is a cross disciplinary investigational sciences facility that will centralise the undertaking of translational laboratory research in the principal areas of immunity, infection, inflammation and personalised medicine

PROJECT VALUE: £1.45 MILLION APPROX.

STAGE: COMPLETED JULY 2013

CLIENT: UNIVERSITY HOSPITAL SOUTHAMPTON NHS FOUNDATION TRUST



Emergency Department, Southampton General Hospital

Studio Four have been working with University Hospital Southampton NHS Foundation Trust to design the new Emergency Department at Southampton General Hospital. The £7 million development will create a dedicated Children's Emergency Department, increased resuscitation room capacity, enhanced waiting areas and separate emergency vehicle area. Planning approval was granted mid 2013 and technical drawings will commence towards the end of 2013 with a start on site expected early 2014.

PROJECT VALUE: £7 MILLION APPROX.

STAGE: PLANNING APPROVAL / WORKING DRAWINGS

CLIENT: UNIVERSITY HOSPITAL SOUTHAMPTON NHS FOUNDATION TRUST



Children's Hospital, Southampton General Hospital

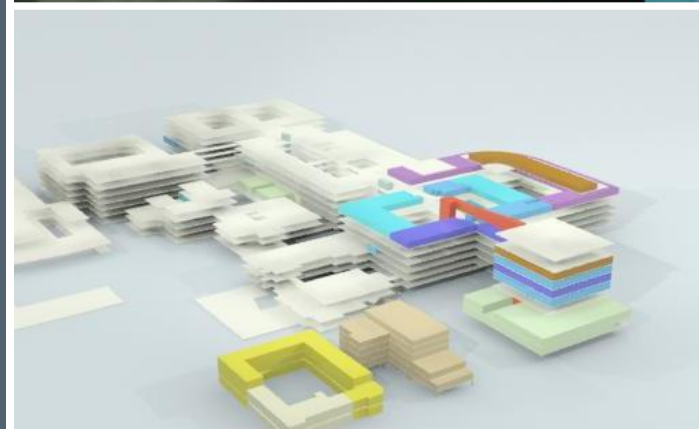
Currently in design, the construction of the new Children's Hospital represents the final phase of the East Wing Annexe and comprises three floors of wards and a floor of support services. It includes link bridges to the existing hospital at each floor, together with a new entrance at ground level and paediatric outpatients' departments at ground and first floor.

The heli-pad (currently situated above the car park) will be relocated to the roof and provided with a lift connection to the Emergency Department on level C.

PROJECT VALUE: £60 MILLION

STAGE: IN DESIGN

CLIENT: UNIVERSITY HOSPITAL SOUTHAMPTON NHS
FOUNDATION TRUST



East Wing Annexe, Southampton General Hospital

Phase 1a of East Wing Annexe is complete, comprising a floor of treatment and consulting rooms for the Cardiac Outpatients Department and Oncology Department, it also provides two state of the art chemotherapy suites.

This project represents the first phase of a new eight storey wing. Connected by a bridge above the ambulance deck which accommodates a day room and offices, the departments are now located adjacent to the inpatient services they support.

PROJECT VALUE: £8 MILLION

STAGE: COMPLETED JANUARY 2010

CLIENT: UNIVERSITY HOSPITAL SOUTHAMPTON NHS FOUNDATION TRUST



Day Surgery Unit, Southampton General Hospital

The Day Surgery Unit was completed in October 2012 and provides space for 38 patients who are attending Hospital for a surgical procedure that will be carried out that day and result in the patient being able to go home the same day. The new unit is located opposite the existing theatres in centre block.

The new unit provides multiple ward areas as well as necessary staff support accommodation

(photos courtesy of Kier)

PROJECT VALUE: £1 MILLION APPROX

STAGE: COMPLETED OCTOBER 2012

CLIENT: UNIVERSITY HOSPITAL SOUTHAMPTON NHS FOUNDATION TRUST



Diagnostic Treatment Centre, Royal Hampshire County Hospital

Studio Four were initially appointed to carry out a feasibility study for a new Diagnostic Treatment Centre at the Royal Hampshire County Hospital in Winchester. The practice was then asked to participate in an accelerated procurement process to achieve the earliest possible completion; Planning permission was submitted within 5 weeks and a Two-stage tender was undertaken to allow work to start on site 5 months later.

The 4-storey building contains 7,650 sq m of floor space, of which 2,500 was fitted out as part of this initial phase, mainly on the top floor. The new accommodation comprises 3 operating theatres (of which 1 is "Ultraclean"), 4 Oscopy rooms with 'scope cleaning facilities, Recovery areas for both these facilities, a 28-Bed Short Stay ward and shared Reception, pre-op consulting rooms and waiting areas.

The remaining floors have been left vacant for future phases, with the structural grid and standardized window distribution allowing maximum flexibility of internal layouts.

PROJECT VALUE: £8 MILLION

STAGE: COMPLETED OCTOBER 2005

CLIENT: WINCHESTER & EASTLEIGH HEALTHCARE
NHS TRUST



Neo-Natal Unit, Princess Anne Hospital

The internal refurbishment scheme at Southampton's maternity hospital was designed to provide extra cot spaces within the existing Neonatal department. The new cot bays exist in a larger area allowing more space for the nursing staff when treating a single patient.

PROJECT VALUE: £1.1 MILLION APPROX

STAGE: COMPLETED OCTOBER 2006

CLIENT: UNIVERSITY HOSPITAL SOUTHAMPTON NHS FOUNDATION TRUST



Haematology Day Unit, Southampton General Hospital

Completed in July 2013, the Haematology Day Unit at Southampton General Hospital will serve patients with leukaemia and other blood disorders requiring day treatment. The accommodation is being created partly by the conversion and refurbishment of existing accommodation and partly by extending into the West Wing Courtyard at Level C.

The HDU was funded by Southampton Hospital Charity's Red & White Appeal which have involved the community in the fundraising.

Studio Four were involved from feasibility to completion.

The proposal will significantly improve facilities for patients with leukaemia and other blood disorders from across Hampshire and the Isle of Wight.

PROJECT VALUE: £1 million

STAGE: COMPLETED JULY 2013

CLIENT: UNIVERSITY HOSPITAL SOUTHAMPTON
NHS FOUNDATION TRUST



Clinical Haematology Centre, Southampton General Hospital

Initially to be part of the Oncology PFI, the completion dates were a long way off the service expansion requirements, so the Clinical Haematology Centre became a stand alone project.

Phase 1A is the Bone Marrow Transplant extension of nine new rooms. This was funded direct from the NHS and completed January 2010. A highly intensive serviced area, a whole floor is required to provide filtered air individually to each of the isolation rooms where patients may not leave for six weeks.

Phase 1B is a dedicated Day Unit. This is currently shared with Oncology and the two need space to expand. Part refurbishment and part new, this is the first Appeal for the Southampton Hospital Charity, who are raising £2.2 million for the project.

Phase 2 is to refurbish and reorganise the rest of the existing Haematology department, bringing it into line with current standards and increasing the number of single side rooms.

PROJECT VALUE: £4.5 million (Phase 1a)

STAGE: COMPLETED JANUARY 2010 (Phase 1a)

CLIENT: UNIVERSITY HOSPITAL SOUTHAMPTON
NHS FOUNDATION TRUST



contact

Romsey

Tollgate Estates
Stanbridge Earls
Romsey
Hampshire
SO51 0HE
Tel: 01794 511255
Email: admin@studiofourarchitects-romsey.co.uk
Website: www.studiofourarchitects.com

Winchester

Sherwood House
8 Upper High Street
Winchester
SO23 8UT
Tel: 01962 820255
Email: admin@studiofourarchitects-winch.co.uk
Website: www.studiofourarchitects.com

Southampton

1-3 Lyon Street
Southampton
Hampshire
SO14 0LD
Tel: 02380 228923
Email: admin@studiofourarchitects-soton.co.uk
Website: www.studiofourarchitects.com



Who we are



Romsey Directors (clockwise from top left)
Stephen Hole, Philip Amey, Peter Barnett



Winchester Director
Michael Brownlow



Southampton Director
Gareth Jenkins



Studio Four Architects Ltd is an RIBA registered practice with over 30 years of experience in a diverse range of project types. With around 40 staff in 3 offices across Hampshire we can provide valuable, professional advice on the construction process and it is never too late or too early to contact us for professional assistance.