

# CURVACEOUS

Accessories  
By Panache



C6



C7



C7

#### Finish Options

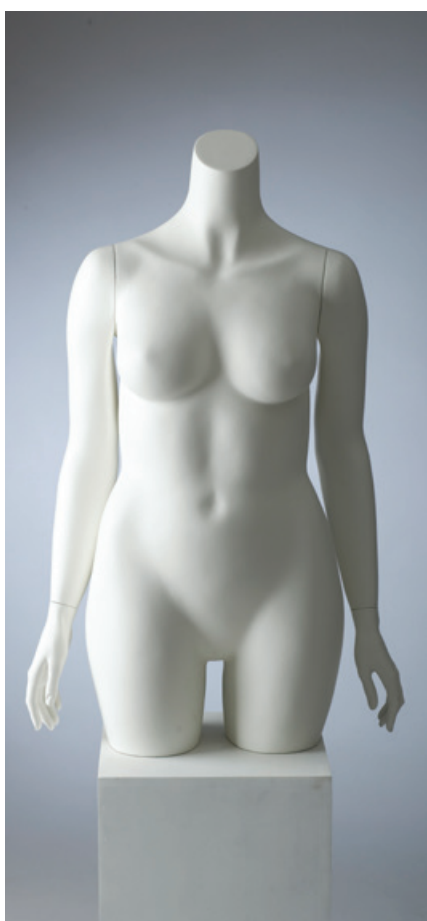
- All available in choice of colours and finishes
- Custom colours on request

#### Fittings

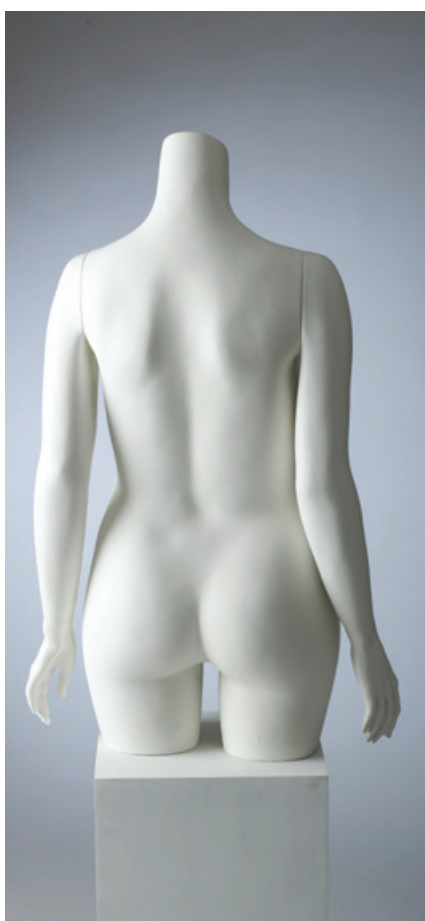
- All mannequins supplied with a circular tempered glass base
- All mannequins supplied with ankle and foot rod as standard.

<b>C6 Bra Form</b>	<b>UK/Europe</b>	<b>USA</b>
Height	36cm	14"
Bust	104cm	41"
<b>C7 Brief form</b>	<b>UK/Europe</b>	<b>USA</b>
Height	44cm	17.5"
Hip	109cm	43"

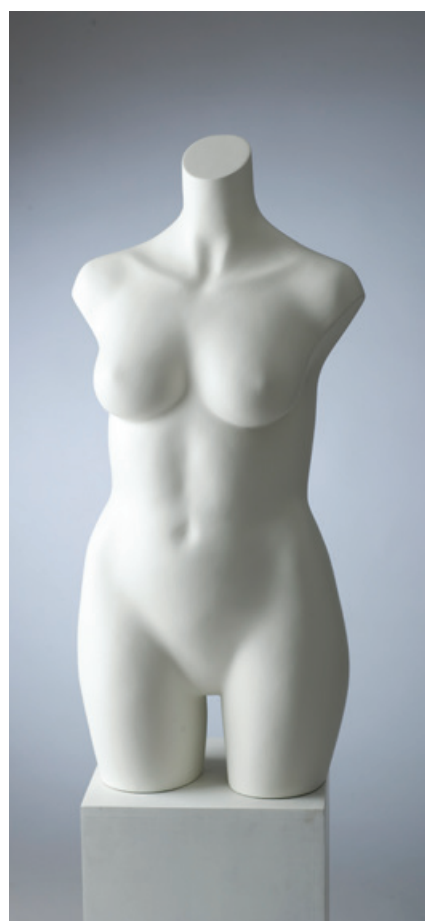
All measurements are approximate only



C4



C4



C5

<b>C4</b>	<b>UK/Europe</b>	<b>USA</b>
Bust without stand	95cm	
37.5"		
Bust with stand	185cm	6'1"
Clothing size	16/44	14
Bust	104cm	41"
Waist	84cm	33"
Hips	109cm	43"

<b>C5</b>	<b>UK/Europe</b>	<b>USA</b>
Bust without stand	73cm	29"
Bust with stand	163cm	64"
Clothing size	16/44	14
Bust	104cm	41"
Waist	84cm	33"
Hips	109cm	43"

All measurements are approximate only

**Finish Options**

- All available in choice of colours and finishes
- Custom colours on request

**Fittings**

- All mannequins supplied with a circular tempered glass base
- All mannequins supplied with ankle and foot rod as standard.



**PANACHE**  
DISPLAY

[www.panachedisplay.co.uk](http://www.panachedisplay.co.uk)  
[info@panachedisplay.co.uk](mailto:info@panachedisplay.co.uk)

© 2013 Panache Display Ltd  
Designed and Created by Panache Display, London UK