

SOUNDVISIONINSTALL

SVI

THE TRADE'S FINEST HOME ELECTRONICS RESOURCE

ISSUE 135 JUNE 2016

www.svimag.com

£2.95 where sold

**CONTROLLED
INDULGENCE**

GET AWAY FROM IT ALL AT A HIGH-END
HOTEL SUITE GONE HIGH-TECH

ROUND THE BENZ

VISITING THE FUTURE OF CI AT THIS
YEAR'S HOME TECHNOLOGY SHOWCASE

CINEMA SPECIAL

A SELECTION OF THE FINEST
SUM OF PARTS THAT CREATE
THE HOME CINEMA WHOLE



INSIDE AWE!

HOME CINEMA HEAVEN, CUTTING-EDGE KIT,
DESIGN AND DIRECTION: WELCOME TO AWE

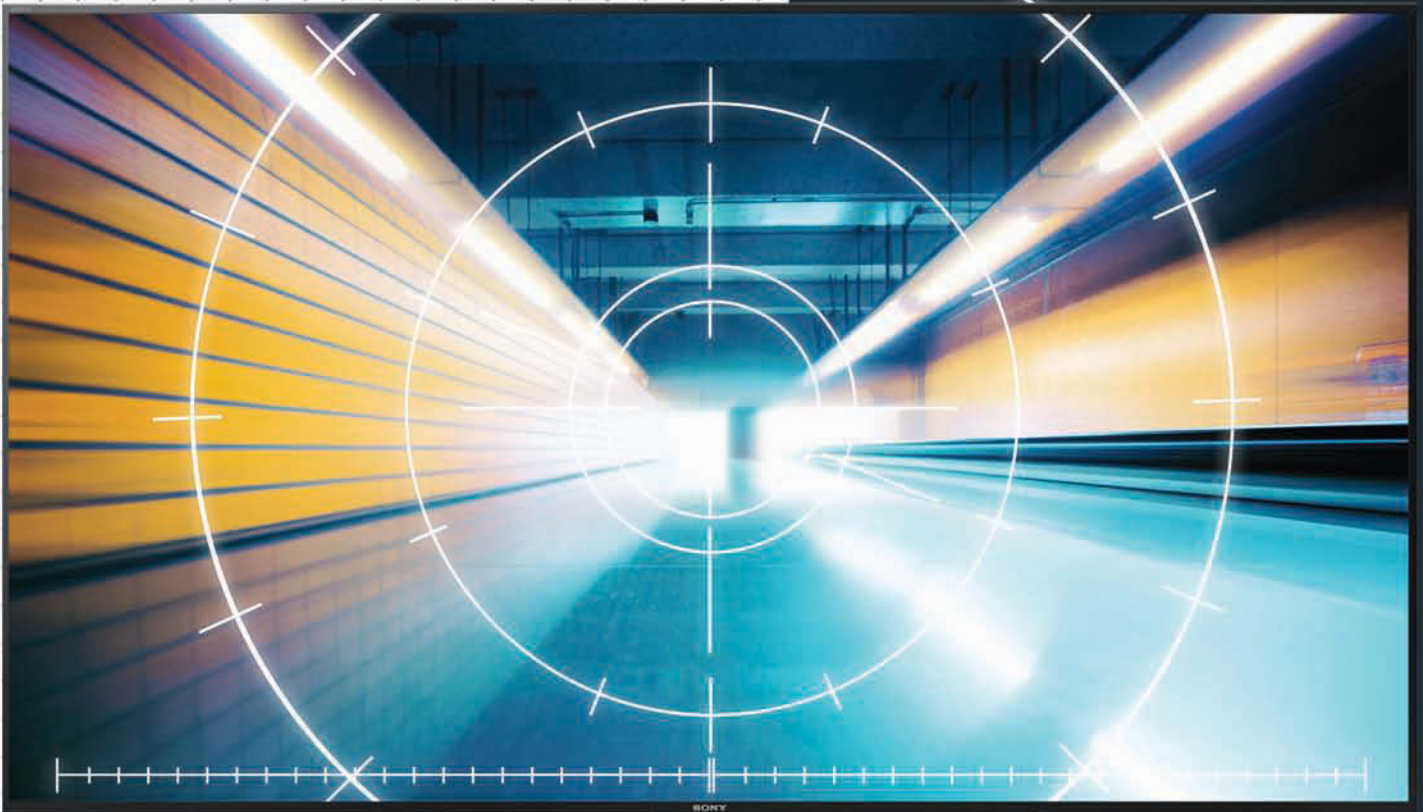
SONY

MASTERFUL CONTROL

Groundbreaking IP Control.
Access from anywhere.

BEAUTIFUL IMAGES

4K Image Resolution.
See the future.



THE X8570 RANGE

- > 4K Image Resolution (3840 x 2160 pixels)
- > HDR Ready
- > Quick Set up with Hotel Mode
- > Android TV Built In

- > Integrated TDM Signage
- > IP Controllable via Web API or RJ45
- > Available in 75", 65" & 55" Sizes
- > 43" & 49" Sizes available in X8370 Range

Perfectly integrates with all major control systems



invisionuk To find out more, call the Invision UK sales team on **01359 270280** or visit **www.InvisionUK.com**

All trademarks are the property of their respective manufacturers. E&OE. Copyright © Invision UK Ltd 2015. Invision UK Limited, Alexander House, 3 Hillside Business Park, Kempson Way, Bury St Edmunds, IP32 7EA.

TOTEM

Discover yours



With cutting-edge, patented technology, the Tribe is luxuriously detailed and perfectly proportioned. Exclusively designed, they are among the slimmest wall speakers available, offering a brocade of rich harmonics with world-leading on- and off-axis dispersion and frequency range.

The Tribe III is a true full-range speaker that activates sound naturally and effortlessly with complete phase coherence and unequalled dispersion. Using Totem's in-house produced and hand-assembled Torrent woofer, it sets new standards in all domains. Nuance, inflection, detail, power and flexibility are just some of its qualities.

Totem Tribe Onwall Series
starting at £799

www.TotemAcoustic.com

UK & European distributor: Joenit Belgium +3215285585 www.joenit.com



10x10 HDMI HDBaseT™ Matrix with Audio Matricing

PUV-1082-4K22



Introducing our new flagship Matrix, designed to transmit video (resolutions up to 4K2K@60Hz, HDCP 2.2, HDMI2.0 and 3D content) and multi-channel digital audio from 10 HDMI sources to 8 HDBaseT outputs (via a single CAT5e/6/7 cable up to 100m) plus 2 independent HDMI2.0 outputs (cable lengths of up to 10m).

Incorporating an independent audio matrix with 14 audio outputs and 10 audio inputs which allows the de-embedding of HDMI audio to the audio outputs and embedding audio to the HDBaseT and HDMI outputs. Optical Audio Return (OAR) Technology allows the optical input on compatible receivers to be routed back to the audio matrix.

LAN connectivity provides a 100BaseT network for Smart TVs or games consoles in every zone and the Power over HDBaseT (PoH) function provides power to compatible receivers.

Also available: PUV-1082PL-4K22 HDBaseT LITE Matrix (60m)

Compatible Receivers



100m HDBaseT Slimline Receiver

PUV-1530RX

- 4K, HDCP2.2, HDMI
- PoH (Power over HDBaseT)
- OAR (Optical Audio Return)
- LAN serving



100m HDBaseT Receiver

PUV-1510RX

- 4K, HDCP2.2, HDMI
- PoH (Power over HDBaseT)
- LAN serving

4K2K

HDCP2.2

HDMI
HIGH DEFINITION MULTIMEDIA INTERFACE

HDBaseT
ASD

Matrices

4K

Audio

Extenders

Switchers & Splitters

Scalers & Converters

Other AV

DISCOVER OVER 350 ADVANCED AUDIO VISUAL SOLUTIONS AT

www.cypeurope.com



12



26



40

THIS ISSUE

6 WHAT'S NEW

A lot's new, that's what, including Ixion's Maestro music system, Monitor Audio's limited edition gold Airstream S150 Sennheiser's HD headphones with the Apogee Groove and much more

10 INDUSTRY NEWS

All the must-know news and on-coming events currently making the headlines

12 AWE NEWSFEED

Hot on the heels of their recent Spring Expo at Alexander House, Sales Director PAUL MOTT brings us a bumper AWE update offering

14 AWE NEWSFEED

AWE Sales Director, PAUL MOTT, delivers all of the latest news from ahead of the Spring AWE Expo

16 SHINE A LIGHT

Ruddy big TVs are all well and good, but when it comes to big screen performance and convenience the solution is simple

22 INSIDE CI

SVI's unsleeping Seer of CI, DAVE SLATER, focuses his third eye on all the latest comings and goings in the world of Custom Install

24 ROUND THE BENZ

Visiting the future of CI at this year's Home Technology Showcase

26 BRING THE NOISE

Unless your client is obsessed with nothing but silent movies, when it comes to completing the ideal home cinema, you'll need some serious surround speakers

30 SEPARATES WAYS

Simple one-box solutions may do for some, but for true home cinemaphiles and their installers, only separates will suffice

36 CLARITY CALLS

SVI's overlord of audio, PHIL HANSEN, returns from Germany's High End Show with a suitcase full of new Hi-Fi facts

38 THE CEDIA SCENE

MATT NIMMONS, explains the benefits of becoming a CEDIA instructor and how it can boost your professional and company brand

40 CI CASE STUDY

Get away from it all with Lairds of Troon to a high-end hotel suite that's just gone high-tech

42 TRAINING DIARY

Bigger and more fact-packed than an AV and install encyclopedia, go get more grasp, expand your expertise and train your way to the top of the industry tree. Go!

44 MOVERS & SHAKERS

The directory of the leading lights in home electronics, alphabetised for your convenience

50 SHOWROOM SHOWCASE: DSE GROUP

Resettling in the south, the DSE Group has set-up shop in London, opening the doors on its stunning new HQ...

HOME & AWAY

Whilst normally we do as little as possible between press weeks, it's been a stunningly busy time for team SVI since last issue. With half of Bontell off on maternity leave, as the freshly formed Stutell/Chanart we have been burning rubber on epic odysseys from the Colchester homelands to the far flung reaches of deepest, darkest Surrey, intent on unearthing solid distributor gold-fact, firstly, at AWE's Epsom-based Expo and then onto InvisionUK's two-day tech-fest at Mercedes-Benz World in Weybridge. Yes, Surrey sights have been seen, patience on the M25 savagely learnt, Woking wandered and the inner workings of two of this industry's top distribution dogs absolutely admired. To see for yourself what AWE and Invision are up to, head to pages 12 and 24 now. Or stick around and read the rest of this first; I am still talking and it is rude to just walk away.

That was us on the road, but back home in Britain's oldest recorded town (Chelmsford didn't have a pencil), what have we skilfully hand-stitched together for you this month? Well, known for reasons about to become painfully obvious as our 'Home Cinema Special', within the folds of the following 50-odd pages, you'll find all you need to know about the latest cinema separates, surround sound speakers and projectors and screens, plus cutting-edge CI case studies from Crestron and Lairds of Troon, not to mention all the usual clear-cut comment from the AV and CI industry's biggest brains – in short, then, a precision picture of the Custom Install world as it stands and a fortune-teller-esque glimpse into its glittering future.



Stuart Pritchard
Editor

Stalk us on Twitter: @svimag

Trade Associations:



4,204 for period
1st July 2014 to
30th June 2015

PLEASE SEND ALL CORRESPONDENCE TO: SVI, 21-23 PHOENIX COURT, HAWKINS ROAD, COLCHESTER, ESSEX, CO2 8JY

SUBSCRIPTION OFFER

If you're not in the trade, you don't have to miss out on SVI - subscribe today for just £29.95 a year. Please call: +44 (0)1206 505965 for more information.



SVI is the UK's premier trade title dedicated to serving the needs of the AV and custom installation industries. The sole business publication of its ilk to have a proven distribution afforded by ABC certification, you can guarantee your message reaches those it is intended to.

For advertising and promotional enquiries please contact:



Bonnie Howard
+44 (0)1206 506 249
bonnie@svimag.com



Chantell Keston
+44 (0)1206 506 254
chantell@svimag.com

GET SMART

At the beginning of 2016, CEDIA launched two new courses that were recognised by City & Guilds, the international governing body for training. Following a large number of subscribers throughout the first half of the year, CEDIA is celebrating the first wave of newly qualified CEDIA Smart Home Technicians and Smart Home Designers.

Recognised City & Guilds training courses are an industry standard, and are valued by employers across the world, helping individuals develop their talents and abilities to further their career progression. CEDIA's Smart Home Technician programme is awarded to participants who successfully complete 12 training courses, including the CEDIA Boot Camp, ESC Technical and Networking schools. Attendees who successfully sit the ESC-T and ESC-N certification are presented with a City & Guilds accredited Smart Home Technician certificate.

Similarly, participants who successfully complete CEDIA's Smart Home Designer track, featuring eight training courses from the Designer School, Lighting and Home Cinema Design training packages, and pass the ESC-D certification, are presented with the City & Guilds accredited Smart Home Designer certificate.

Mike Fish, Founder and Director at Shoal Computer Solutions Ltd, is one of the successful CEDIA course participants to achieve a City & Guilds certification

so far this year. Mike took part in the City & Guilds Smart Technician track to help expand his business to encompass all aspects of home technology.

Mike comments: "I thoroughly enjoyed the course and found it to be an excellent starting point for expanding my business into the home technology market. As well as increasing my knowledge in areas I had very little previous experience in, CEDIA's City & Guilds accreditation now allows me to present a more professional image to potential clients and gives me greater confidence promoting my new services."

To find out more about these two courses, download the new Training and Curriculum Guide at www.cediaeducation.com/curriculum-guide. This guide provides a comprehensive overview of CEDIA's full training and education programme throughout 2016.

www.cediaeducation.com



Industry News

The Who-What-Where-When-Why
of AV and CI

CENTRE OF EXCELLENCE

Leading light in lifestyle technology, Crestron, will once again be participating at the Focus 16 event held at Design Centre Chelsea Harbour, this September 18th - 23th.

Focus 16 is an annual event for Design Centre visitors to discover the latest design directions and engage with global names in interior luxury. Following a seasonal refurb of its own on-site showroom, Crestron will be inviting visitors to not only see but also experience the most on-trend luxury home tech innovations in situ, for a unique way to imagine how home automation can both benefit your lifestyle and compliment any desired interior.

Crestron is dedicated to working alongside architects, interior designers and MEP contractors throughout the design process to ensure a smooth integration of smart technology with interior design. With this at the core of every innovation, Crestron's showroom has been refreshed with today's most exciting interior trends.

Petra van Meeuwen, Customer Media Relations Director at Crestron explains: "Home tech has become a key element of modern luxury interiors, and should work with any desired look in a discreet yet sophisticated way. Interior trends change regularly so our systems have been designed to blend in with any scheme. This season we've partnered with leading brands Poltrona Frau, Cassina and Boffi kitchens as well as leading lighting designer Rebecca Weir who are all eager to be part of Crestron's philosophy of bringing luxury home automation to consumers to create the ultimate lifestyle".

The Crestron Showroom provides a platform for visitors to experience how technology and interior design work together seamlessly. The emphasis is on style and the creation of a beautiful and welcoming space which allows clients to enjoy and experience the full range of Crestron products, whilst appreciating how design technology can enhance your lifestyle and complement any interior.

To discover the latest trends in smart home technology and interior design, visit Crestron's showroom during Focus 16 this September.

www.dch.co.uk/Home

www.crestron.eu/showroom



HUB OF ALL THINGS

Blazing a brilliant trail through the CI stratosphere, AWE announced at its Spring Expo in May that it has had been appointed as the URC International Hub for stock, training and technical support. Effective from 1st May, URC assumed direct responsibility for international sales with AWE now being the central point of stock and support for many of the distributors across EMEA.

AWE was appointed as exclusive UK distributor for URC in April 2011 and since then, has established URC as a leading control manufacturer in the UK.

The URC range encompasses two main product lines, Complete Control and Total Control, which features a wide and versatile range of remotes, keypads, system controllers and network amplifiers. The Total Control line continues to expand in products, features and integration. The recent announcement at ISE 2016 of iOS/android device integration as standard means a URC Total Control system is an incredibly affordable and flexible system.

AWE offers two URC training courses. The 'Single Room Control with URC Complete Control' course is designed to get attendees up to speed with URC's CCP software, smartphone and tablet integration, programmable remotes and extenders. The 'Whole House Integration with URC Total Control' course explains how to master the intricacies of an advanced system that whilst still suitable for a single room, is capable of whole building control, automation and multi-room audio. The session introduces attendees to the range, provides advice on how to specify the correct system, plan the infrastructure and learn the programming.

T: +44(0)1372 729 995

E: sales@awe-europe.com

www.awe-europe.com



LG OLED TV 4K



NOT JUST A NEW TV.
A WHOLE NEW CATEGORY
OF TELEVISION.



RS232 ENABLED OLED TV 4K WITH DOLBY VISION HDR

Unlike other TV's, only OLED uses self-lighting pixel technology, delivering a never before seen standard of black, colour and viewing angle all taken to a breathtaking new level with Dolby Vision HDR. With truly groundbreaking Picture-on-Glass design, LG's OLED TV offers the most advanced and practical television for your customers with wall mountable* RS232 enabled** technology in a variety of sizes.

lg.com/uk/discovered



Model shown E6



LG EG960V
JUNE 2015



LG EG960V
MAY 2015



LG EG960V
JUNE 2015



LG EC970V

*Requires additional universal VESA wall mount
**RS232 connection through headphone jack

SMARTER-HOUSE

The UK's only event dedicated to integrated building technology, Smart Buildings 2016, is back for another year and is set to be bigger than ever. Taking place on 18th - 20th October at the Birmingham NEC, the show will once again form part of the unique and all-encompassing line-up at UK Construction Week.

Supported by the industry's leading bodies including KNX Association, the Chartered Institute of Architectural Technologists (CIAT) and the British Institute of Facilities Management (BIFM) to name but a few, Smart Buildings 2016 will be a hive of world leading content, CPD sessions and cutting-edge industry brands.

Some of the exhibitors already signed up to the event include Audiologic, Savant, Theben AG, HDL Technology Ltd and Home of Technologies Ltd.

Showcasing the latest innovations in smart building technology, the event will cater for professionals across the full spectrum of the sector from home automation to climate control, lighting, access and security, workplace technology, entertainment systems and the Internet of Things.

New for 2016, Smart Buildings will stage a dedicated Workplace Zone. The space will showcase leading companies catering specifically for the smart technology market in commercial applications ranging from connected furniture, security, AV systems, conference technology and virtual workplaces.

For more information, booking enquiries and exhibitor testimonials please visit the newly redesigned website or follow @sbshowUK on Twitter.

www.smartbuildingslive.co.uk



CREST OF A WAVE

Crestron is celebrating success following its recent EMEA Masters Conference at the Marriot Hotel in Amsterdam from 17th - 19th May. The event is now the largest conference of its kind, with over 150 attendees from 20 countries making the trip to Amsterdam for 2016.

The Masters Conference offers attendees a unique opportunity to work with the brightest and most creative minds at Crestron, learn about new technologies and gain insights into Crestron's latest developments and thinking. With a wide choice of 26 separate courses, run across 59 sessions throughout the three-day event, attendees were able to take a flexible approach to their learning and participation.

The event kicked off on Tuesday morning with a breakfast networking session to greet Crestron Service Providers, integrators and dealers in attendance. Opening speeches led by Rich Sasson, Crestron Global Director of Technical Services, Randy Klein, CEO, Robin van Meeuwen, EMEA CEO and Fred Bargetzi, CTO, formally launched the Masters Training Programme for



2016. Each speaker welcomed guests to the event and offered insights into the future of Crestron.

"Crestron will always strive to do the best for all those involved in the Crestron family and we aim to never let you down. This is why education is so important; you can't program or deploy our equipment without it, and with the world of technology constantly changing, Crestron is keeping up with that pace, and our training continues to



develop and change in line with all this." Randy Klein, CEO, Crestron.

This year's training sessions included Understanding Crestron Fusion Cloud Features and Architecture, GeoPresence working with PinPoint and NearField Technology, Crestron Networking in the Enterprise, Streaming Products and Fusion. Such was the enthusiasm for these sessions; many ran at maximum capacity, with one session taking numbers to a new level with a record 102 people attending.

New additions to this year's programme included extended opportunities for guests to network with peers and Crestron employees. The Masters is as much about collaboration as it is about training, and this year Crestron hosted social events every evening which included a welcome dinner and drinks, plus a glamorous evening of entertainment held at Tommy Hilfiger's European HQ, where the entire lighting system is Crestron controlled.

Robin van Meeuwen, EMEA CEO for Crestron, commented: "It was incredible to have so many people attend, we are lucky to have so much continued support including from those who attending our inaugural event many years ago. I can't thank our valued customers enough; without them Crestron would not be the company that it is today."

www.crestron.eu



Native 4K Projectors (4096 x 2160 Pixels)



VPL-VW5000ES

- Laser light source
- 5,000 ANSI lumens
- 20,000 hour lamp life



VPL-VW1100ES

- Dynamic contrast ratio: 1,000,000:1
- 2,000 ANSI lumens
- 3,000 hour lamp life



VPL-VW520ES

- Available in Black or White
- 1,800 ANSI lumens
- 6,000 hour lamp life



VPL-VW320ES

- Available in Black or White
- 1,500 ANSI lumens
- 6,000 hour lamp life

Full HD  Projectors (1920 x 1080 Pixels)



VPL-HW65ES

- Available in Black or White
- 1,800 ANSI lumens
- 6,000 hour lamp life



VPL-HW45ES

- Available in Black or White
- 1,800 ANSI lumens
- 6,000 hour lamp life

NORWEGIAN GOOD

Brand new Norwegian specialist in luxury audio systems, Ixion, has launched its introductory tour de force, the Maestro music centre.

Handcrafted in Norway, the Maestro is an all-encompassing music centre – with the same focus as a traditional system but with the added touch of modern functionality. This compact package makes the listening experience easy and the user experience is streamlined with the familiar Android interface. With streaming services such as TIDAL, Spotify and Wimp built-in to the system, users are also ready to tune in from the word 'go'.

The Maestro supports up to 24-bit/ 192kHz playback and with an MQA partnership on the horizon, it is expected to be a treat to the senses. With a limited range of high-resolution systems on the market, the Maestro truly sets the benchmark for sophisticated, high end audio.

Connectivity is key to the Maestro; users can play music, audio books and podcasts from a smartphone, USB, Bluetooth device or an aux-in connection. Internet radio and DAB are prominent features and allow users to connect to a variety of radio stations throughout the world and with the termination of FM signals in Norway in 2017, the product couldn't have launched at a better time.

For users who wish to expand into multiple rooms, Ixion are soon to launch its Solo: 2 speaker, which, designed to work in sync with the Maestro, allows up to eight users to individually play their favourite music without interrupting each other. Alternatively, an individual user can play the same song on multi speakers throughout the home. Furthermore, each Solo: 2 speaker connects via a power-line, as opposed to Wi-Fi, allowing for immediate playback as soon as the speaker is plugged into a wall socket.

The Maestro is available at Harrods now with a SRP of £1099, and the Solo: 2 will become available over Summer 2016 with a SRP of £299.

www.ixionaudio.com/en



New What's New?

SVI's round-up of all the very latest product news.
If it isn't here, it isn't happening...



MASTERFUL MUSICAL MARRIAGE

KEF and Linn, two of Britain's most acclaimed and respected high-fidelity brands, have announced that they have completed a major sonic improvement project. By working closely together and utilising each other's outstanding technologies, the two companies have jointly produced a seriously superior loudspeaker sound quality for the true Hi-Fi purist. This collaboration has achieved a level of sonic performance simply not possible before.

All passive speakers, including the very finest and most expensive in the world, suffer from some level of phase non-linearity, which means that the different frequencies of an instrument arrive at the listener's ear at different times. Unlike other passive speakers, KEF's world-famous signature Uni-Q technology, where the HF unit is placed at the very acoustic centre of the MF unit, allows for phase linearity through the MF/HF region. However, until now, it hasn't been possible to create the loudspeaker designer's 'holy grail' – the full bandwidth phase linear point source, dealing with the bass as well as the MF/HF region.

Using Linn's breakthrough Exakt technology, KEF's R&D engineers have developed an Exakt crossover for their highly regarded Reference 5 model. This crossover uses the powerful processing engine in the Linn Exaktbox to eliminate the phase non-linearity of the passive crossover and the aggregate output of the drive units, ensuring all frequencies are time-aligned. This means that the fundamental of each note and its harmonics arrive perfectly in time, preserving the true character of each instrument.

A pair of KEF's Reference 5s was recently modified for active operation by bypassing the internal passive crossover, allowing the individual LF, MF and HF sections to be driven directly by separate power amplifiers fed with signals from the digital crossover in the Linn Exaktbox. This was demonstrated at the recent Music High End Show in Munich to rapturous audiences.

www.kef.com

PURE GOLD

The British masters of music at Monitor Audio have created a gold limited edition of their award-winning Airstream S150 Bluetooth speaker to celebrate the 30th anniversary of their ground-breaking Gold Dome Tweeter.

The Gold Dome Tweeter was launched in 1986 and represented a breakthrough in audio development and sound reproduction that became one of the foundations for the creation of Monitor Audio's acclaimed audio signature. To celebrate this, the Anniversary Special S150 features a luxurious gold-finish body coupled with a jet-black cloth grille.

Priced at £150, Monitor's Airstream S150 Anniversary Special Bluetooth speaker features state-of-the-art connectivity, advanced digital processing and powerful amplification to generate a deceptively big stereo sound. The S150 streaming stereo speaker system promises top class fidelity from all Bluetooth-compatible devices.

Packed with the high energy sound of Monitor's award-winning audio technology for music lovers to savour from room-to-room, the limited edition Airstream S150 concentrates effortless functionality, advanced digital processing and powerful amplification within a beautifully portable high-performance system, designed to draw a deceptively big stereo sound from all Bluetooth devices within seconds, anywhere in the home.

Employing superior audio architecture to get the most from higher quality Bluetooth aptX™ streams, the compact S150 will pair instantly with compatible devices. For added convenience, iOS devices may be charged via the USB input and analogue devices can connect through a 3.5mm stereo jack.

Constructed from a mineral-filled polymer for excellent rigidity and damping to form the ideal acoustic environment for the cluster of four specialised drivers, comprising a proprietary gold dome C-CAM® tweeter flanked on angled baffles by dual 3-inch-CAM metal cone bass drivers augmented by a rear-firing Auxiliary Bass Radiator (ABR). The C-CAM drivers are powered directly by dedicated Class D amplifiers, generating 40W in total, which are fed by a high-resolution DAC and optimised by intelligent digital processing to ensure the ideal balance of detail, dynamics and dispersion within Bluetooth range.

www.monitoraudio.co.uk



SOUND PARTNERSHIP

Audio specialist Sennheiser and digital audio recording specialist Apogee are launching a new bundle that brings together Sennheiser's HD 650 open, dynamic Hi-Fi stereo headphones with the Apogee Groove – a high-performance USB DAC and headphone amp. This combination lets Mac and PC users enjoy the full dynamic range and ultra-low distortion levels of one of the classics of Sennheiser's audiophile headphone world powered by the legendary sound quality of Apogee.

Crafted with handpicked components for incredibly narrow tolerances, special acoustic materials and exceptional engineering, they deliver reference-class fidelity and a balanced sound with crisp bass, excellent mid frequency response and a gentle, pleasantly natural treble: the iconic, oval-shaped Sennheiser HD 650 are a true headphone classic by the leader in audio.

With the HD 650, Sennheiser created the first dynamic headphones to achieve such authentic and natural sound reproduction, both accurate and transparent.

Groove's output provides ample power at any impedance for a punchy bass and stunningly clear mid and high frequencies. Its Constant Current Drive™ technology delivers a smooth frequency response with any headphones – with Apogee recommending Sennheiser headphones to the discerning listener. Groove also features Apogee's Quad Sum DAC design which utilises four digital-to-analogue converters per channel to achieve the highest dynamic range and lowest distortion (THD+N) of any device in its class.

The bundle will be distributed exclusively via Sennheiser's online shop from the end of June.

en-uk.sennheiser.com



IMPRESSIVE RACK

Purveyors of luxury televisual tech, Loewe, has teamed up with fellow German brand Spectral, maker of superior AV furniture, to deliver a co-branded range of cabinets tailor-made for Loewe's premium TVs and connected AV equipment. The design is sleek and minimalist, in keeping with the elegant form of Loewe TVs, yet beneath this apparent simplicity lies a sophisticated array of flexible features and smart functionality.

The cabinets' exterior is fashioned from satin glass in a choice of white, anthracite or petrol blue. Three models are available: Rack 56, Rack 110 and Rack 165, the numerals denoting the overall width in centimetres. The front panel, which lifts to access the interior of the unit, can be specified in satin glass or acoustically transparent fabric. The fabric option comes in black, silver or carbon and is ideal for those who wish to place a speaker inside the cabinet.

Each cabinet comes with one or more height-adjustable glass shelves, the internal configuration varying according to the model. Rack 56 has one internal compartment with a single adjustable shelf that stretches the width of the unit, while Rack 110 and Rack 165 sport two and three compartments respectively, with a shelf in each compartment. Options include an internal drawer with a mirrored front, a universal adapter to mount a soundbar inside the unit, and a circular fabric-covered opening in the base to incorporate a subwoofer.

One of the most eye-catching optional extras is wireless smartphone charging – simply place a compatible smartphone on the top surface and built-in Qi inductive charging technology will do the rest. A variety of smartphones are compatible with Qi inductive charging, including models from Samsung, LG, HTC, Nokia and Motorola. Apple iPhones aren't currently equipped, but Spectral makes inductive charging cases for the iPhone 5 onwards.

Another clever option is internal LED lighting, complete with motion sensors to switch on and off automatically when required. The lights are rechargeable via a micro USB cable; a USB charger can also be purchased.

The Loewe Spectral Rack 56, Rack 110 and Rack 165 are made in Germany and available from May. RRP's are from £850 for the Rack 56, £1320 for the Rack 110 and £1680 for the Rack 165 (prices vary according to the options specified).

www.loewe.tv

AWE NEWSFEED

In this home cinema special, Paul Mott discusses the AWE cinema and show apartment and provides examples of it being put to good use...

AWE INSPIRING CINEMA

The rise of smart home technology is proving to be exponential, with more and more homes now featuring levels of technology which would have seemed unachievable 10 years ago. A home cinema is seen as the pinnacle of this, bringing together the various elements of technology to achieve, if done correctly, a fully immersive cinema environment in the comfort of your own home.

Just over a year ago, we opened a state-of-the-art cinema room within our show apartment, which offers an impressive Dolby Atmos and DTS:X 3D immersive audio experience.

The real benefit of the cinema room has not just been movie nights for AWE staff, but in bridging the gap between AWE, end-users and design professionals, by inviting customers and their client's to the showroom at Alexander House in Epsom.

The AWE home cinema is very much a demonstration room, bringing together all of the latest technology ingredients to produce a cutting edge home cinema that hits a sweet spot and outperforms much more expensive systems. It has been created using the best products from major brands, rather than low volume esoteric units, to combat pre-conceived ideas that unlimited finances are needed to provide such a stunning result. The system installed is scalable either way, allowing the home cinema at Alexander House to be used as a working example. Customers can use the AWE cinema as a guide for clients, a platform from which

the perfect home cinema for that particular client can be specified and installed. With regards to this, the AWE team are on hand to provide expert technical advice, ranging from speaker configuration to ideal projector and screen combinations.

To help simplify the installers role of describing and specifying systems for end users, we have introduced a range of pre-configured packages for home cinema set ups and multi-room audio systems. The five home cinema packages are suitable for use in a number of installs, including 5.1, 5.2, 5.2.4 7.4.4 and upgraded Dolby Atmos and DTS:X set-ups. A combination of KEF speakers, subwoofers and amps, Kinetik cables and fire hoods, and Marantz and Denon AV receivers, amps and processors make up the packages.

So, we provide a home cinema demonstration room within a show apartment, expert technical support and training, as well as a host of products and packages to make the process of specifying and installing a home cinema as profitable as possible. Looking for a home cinema? Look no further than AWE.



VISUALLY IMPRESSIVE

The AWE Cinema has recently benefitted from the new addition of a Draper Clarion fixed screen, fitted with their unique ambient light-rejecting ReAct fabric. The ReAct screen significantly enhances colour and contrast where ambient light is present, perfect where total blackout is either not achievable or desired. The image is provided by the award-winning Epson EH-LS10000 Laser Projector, which delivers the ultimate in 4K enhanced, lifelike quality images and stunning black levels for the true cinema experience.



SOUND DESIGN

For many clients, deciding upon features and equipment within a home cinema can be challenging. This is why we encourage customers to use this space as their own demonstration room. The real benefits of the immersive Dolby Atmos and DTS:X system are best experienced in the dedicated space and the conversion rate is high. As things stand, we are one of only a small number of places in the UK that these new technologies can be experienced in a residential set-up.

The sound within this room is indeed a stand-out feature. Thanks to Marantz amplification and KEF loudspeakers, the cinema boasts a 7.5.4 THX speaker configuration, which supports both Dolby Atmos and DTS:X to

provide exceptional audio quality with smooth delivery, whilst retaining the necessary impact. The Marantz AV-8802 processor and two MM-8077 power amplifiers drive three KEF Ci5160RL-THX and four KEF Ci3160RL-THX in-wall speakers and four KEF Ci200RR-THX in-ceiling speakers which provide the front and rear height channels, supported by five matching KEF Ci3160RLb in-wall subwoofers and two KEF KA-SA500 sub amplifiers.

The audio performance is unlike anything most have heard before and is supported by a range of additional visual and control products, which all work together in perfect harmony to provide the ultimate home cinema experience.

Many AWE dealers have made use of the AWE Apartment and have shown that significant sales can be achieved by utilising this space. So, here are two examples:

A HALCYON ENVIRONMENT

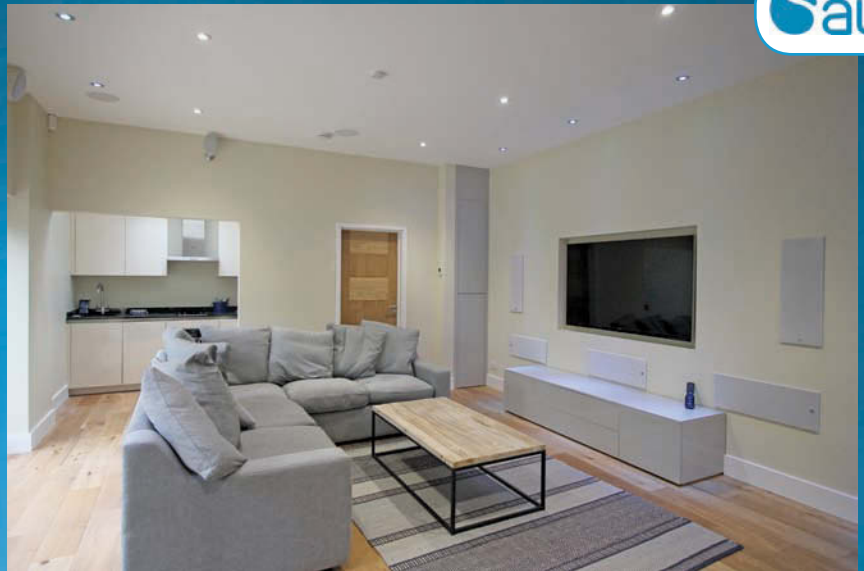
When experienced installer, Halcyon AV received a brief to provide a multi-purpose home cinema featuring Dolby Atmos, they contacted AWE to book a visit to the AWE Cinema.

"During the early stages of specifying the equipment, the client asked for a demonstration of what could be achieved in their home," comments Tim Dyer, Director of Halcyon AV. "I got in touch with AWE as they had just finished the cinema room at the head office. We both went for a full demonstration of Dolby Atmos and knew it was the perfect system for the job."

The owner of the property comments: "We received advice from Tim as to what system would work well, but it was when he invited us to the AWE showroom for a demonstration and we heard all that the system could do, that we thought - Wow, it's fantastic and it would be perfect for us."

With the client basically saying 'I want one of these' when he visited the AWE Cinema, the project began soon after, with Halcyon AV transforming a purpose-built extension into a home cinema setting.

The impressive building has been designed with the AWE-supplied technology at its heart. The home cinema is fully insulated and features soundproof screens and blinds, allowing the immersive sound produced by the KEF speakers to be contained within the building. The KEF Ci3160 speakers were installed around the 65-inch Panasonic screen, with KEF Ci160QR speakers installed into the ceiling. The speakers have been matched with a Marantz SR7009 AV receiver and Marantz UD5007 Blu-ray player. The sound within this room is indeed the stand-out feature. Thanks to Marantz and KEF, the cinema boasts a 11.2 THX speaker configuration,



which supports both Dolby Atmos and DTS:X to provide exceptional 360° audio quality.

Audio aside, the high-quality visuals are down to a Panasonic 65-inch AX902 4K Smart TV. To ensure the cinema room is easy to use by the whole family, Halcyon AV opted for a URC MX1200i touchscreen remote control.

"The room has different uses for all of the family," explains the homeowner. "I love using the room to listen to music through the sound system. But the whole family has been using the room as a home cinema – we all watched the final of the Great British Bake off in here."

JUST ADD AWE

Stuart Burgess, owner of Just Add Popcorn is a big fan of the AWE apartment and regularly brings clients to Epsom to experience home technology in a lifestyle environment. When they were approached by a client to work on a property in Farnham, it was once again, a good opportunity to head to Epsom. The initial brief was for the latest technology to be installed, but to not detract from the oak frame interior.

"We started the project by meeting the client at AWE's show apartment," explains Stuart. "Here, we could have an informal chat over a coffee and show our client some of the products and solutions they could choose to include into the project. This introduction to home technology and the various demonstrations set us in good stead for getting our plans signed off by the client. As the client had already been hands on with most of the suggest products at AWE, it was an easily decision for them to make."

Just Add Popcorn specified a range of AWE distributed products, including URC Total Control, HEOS by Denon, KEF speakers, Philips Dynalite lighting control and Samsung TVs.

"At the end of the project, we have achieved a connected home that ticks all the boxes in the client's original specifications," adds Stuart. "The home is advanced, yet stylish, with the majority of technology hidden from view. The visit to the AWE Apartment aided the process of selling the idea of home technology to the client, and delivering the desired end result. This facility is a great benefit to us, and we will continue to bring clients to meet the AWE team in Epsom."



REFRESHING PRODUCTS

Sleek Screens

Staying at the forefront of smart home technology requires us to be constantly updating the products in the apartment. As visitors to our recent expo can testify to, there is an impressive array of technology on display, from UHD TVs to multiroom audio systems.

One of the most recent updates to the AWE apartment has been the newest offering from Panasonic, the 65-DX902 TV. The new UHD TV has been described as a 'whole new era of TV technology' and has recently been awarded a Highly Recommended status by AV Forums and Ultra HD Premium status by the UHD Alliance.

Available in 58- and 65-inch, the DX902 series supports High Dynamic Range (HDR) content, something that is particularly relevant in the industry right now.

Panasonic has also launched the new DMPUB900 Ultra HD Blu-ray disc player, which is the perfect partner for the DX902. Providing playback of both standard and the new UHD Blu-ray discs, this unit is the best way to get UHD content without any of the quality restrictions associated with streaming content which is subject to compression.

We have also updated the show apartment with the new 55-inch UHD Loewe One screen. This affordable range has been cited as providing 'the first step into the Loewe World'.

Loewe is renowned for developing screens that combine an attractive, modern design with excellent AV performance. Thanks to a sophisticated HD scaling algorithm, the Loewe One 40-inch Full HD and 55-inch Ultra HD screens deliver accurate, natural and lifelike picture quality. The screens are compatible with the latest high-resolution interfaces, including HDMI 2.0 and HDCP 2.2. This allows users to view HD content from appropriate external devices in all their glory.

CONTROL, COMMAND

For control, we have installed the new URC TKP-5500 in-wall touchscreen that is both sleek in design and compact in size. The TKP-5500 is a smaller, more compact version of the TKP-7000 and retails at just £529. Featuring a five-inch, LCD, full-colour touchscreen, the TKP-5500 is an intuitive control device that adds unparalleled management of all entertainment, lighting, heating, security and more within a property.

The TKP-5500 offers full graphic feedback from both URC and compatible third-party devices, including HEOS, KNX, NEST, Coolmaster and Philips Hue. When combined with URC Total Control compatible IP cameras, the TKP-5500 can display live video from up to four cameras on one interface for convenient security monitoring.

Amps Away

Another update has been the Marantz AV8802 processor and 2x MM8077 power amplifiers, which provide a stunning Dolby Atmos and DTS:X immersive audio experience in AWE Cinema. Designed to complement each other and used by some journalists as reference products, the AV8802 combines advanced DSP and DAC technologies alongside exclusive Marantz advances such as HDAM and Current Feedback. Dolby Atmos needs little introduction, as it is the most advanced surround sound system currently available, and the Marantz AV8802 processor is able to deliver these unique features.

The Marantz MM8077 power amplifier is designed for the ultimate music and movie surround sound experience. Following a similar design as the AV8802, the seven channel amplifier brings a clear improvement in performance and we are using two of them to help drive our 7.5.4 system!

Want to see these products in action, get in touch with the AWE team to book a visit to the apartment.



CONNECT WITH US

T: +44 (0)1372 729 995 E: sales@awe-europe.com www.awe-europe.com Twitter: @awe_europe Facebook: www.facebook.com/aweeurope

the sound of
craftsmanship



RECOMMENDED
PRODUCT

The SR5010

The SR5010 7.2ch Network AV Receiver packs an unbelievable 180W of power per channel, to fill your room with award winning Marantz sound. With Dolby Atmos experience revolutionary 3D surround sound, with the ability to create an overhead surround soundfield that dramatically expands the sonic space. Enjoy!

Features

- 7.1 channels of amplification at 180w per channel
- Dolby Atmos out of the box and DTS:X ready
- 7 + 1 HDMI 2.0 with 4k 60Hz (HDCP 2.2)
- 2x HDMI out, 7.2 pre-out and 7.1 external in
- Audyssey MultEQ XT

marantz



Exclusively distributed in the UK by AWE Europe Ltd

connect@awe-europe.com | 01372 729 995 | www.awe-europe.com

Alexander House, 3A Blenheim Road, Epsom, Surrey, KT19 9AP

SHINE A LIGHT

Ruddy big TVs are all well and good, but when it comes to big screen performance and convenience the solution is simple...

There's no denying that home entertainment has come on leaps and bounds. When you think that, once upon a time, home entertainment involved employing a jester to dance in a corner for you, it's mind-numbing just how far we have come today. Okay, the invention of television may have put jesters out of a job (note to self: check jester-faze-out history on Wikipedia), but even the television went through a period of just being the idiot-lantern in the corner of the room, switched on, but routinely ignored.

But that all changed again with the introduction to these isles of the idea of the home cinema. With surround sound becoming more or less the norm in UK homes by the mid-to late-2000s, the demand for bigger screens soon followed and the better-healed had also cottoned on to the idea of the dedicated home cinema room – the stage for the projector's rise as an essential element of any self-respecting home cinema was set; and today its place at the heart of the home cinema is de rigueur.

So, with demand these days for higher resolutions and larger lumens light-power, what are the latest leaders amongst the light-throwers? These are...



SONY VPL-HW45ES

Available from Marata Vision, Sony's VPL-HW45ES Full HD 3D projector is a value-packed introduction to the world of true home cinema which proves that making great entertainment to the next level doesn't have to cost a fortune.

The VPL-HW45ES enriches all viewing with fabulous colour, detail and contrast, and uses the same advanced SXRD panel technology you'll find in Sony's top-flight professional and cinema projectors to ensure immersive, crisply-detailed Full HD pictures that bring all viewing to life.

Its uprated optical engine of the is brighter than standard home cinema projectors, and with a powerful 1800-lumen colour brightness, it delivers clear, high-impact images, even in well-lit rooms.

Advanced Reality Creation reproduces colours and textures that get lost when movies are transferred to disc, meaning that viewers will instantly see the difference in crisper pictures that bring you closer to the original master. Plus, there's no need to interrupt everyone's enjoyment of the show, as advanced technology boosts rated lamp lifetime to 6000-hours.

www.marata.co.uk



VUTEC PROJECTOR SCREENS

For those unfamiliar with the make, founded in 1977, Vutec Corporation is a global leader and manufacturer of high-performance projection screens and AV accessories. Vutec's state-of-the-art product line is developed to satisfy the ever changing demands of video enthusiasts and audio/video dealers worldwide. As such they offer a diverse selection of models (Fixed frame screens, Fixed frame screens with masking, Motorised screens and Motorised screens with masking), with screen surfaces that are ISF certified and 4K-tested and sizes available to satisfy any requirement.

Vutec also offer a premium range of their products called the Vision X range – an influential collection of projection screens that offers unequalled craftsmanship, ingenuity and performance. Custom-built for the experienced integrator seeking more, countless hours have been spent on engineering, marketing research, and design to make Vision X a projection screen in a class of its own. With the implementation of an unsurpassed image masking system and a digital screen control system, Vision X quickly became the new standard by which all screens should be compared by.

www.marata.co.uk



SONY VPL-VW320ES

Adding that essential extra definition, Sony is bringing 4K HDR capability to its VPL-VW320ES home cinema projector. Indeed, continuing the momentum built from the projector's initial release at IFA 2015, Sony is now offering customers a new firmware update to ensure they're getting the best possible image quality from their projectors.

This upgrade highlights Sony's commitment to developing HDR support and ultimate image quality across its home cinema portfolio and gives the VPL-VW320ES a second life, making it the third Sony home cinema projector in the existing range, after the VPL-VW5000ES and VPL-VW520ES, to support the 4K HDR format. Take advantage now and get in touch with distributor Marata Vision to learn more.

www.marata.co.uk

SIM2 SUPERCUBE

The SUPERCUBE projector is the perfect combination of compact size, high-performance, and sublime elegance.

DLP® is the picture technology of choice for the SUPERCUBE; it utilises a Full HD 1080p (1920 x 1080-pixel resolution) chipset from Texas Instruments that, combined with top-notch processing, enables the projector to deliver crisp, smooth and clear images. And, thanks to SIM2 3D technology, SUPERCUBE has the ability to convey the extended depth of 3D images that totally involve the viewer in the movie experience.

Upgrading to an RGBRGB colour wheel has improved the colorimetry and colour saturation delivered by SUPERCUBE too, and a new 270W lamp takes the light output to 3000-lumens.

SIM2 has chosen a cubic shape entirely made of crystal-glass, a pure and sustainable material capable of being recycled indefinitely. Its structure does not deteriorate through the recycling process. Crystal-glass is also resistant to light and high/low temperatures, hence looking always brand new even after years of use. And, from a purely aesthetic point of view, crystal-glass is simply stunning. We are all drawn to it. It is synonymous with quality. Its colours, textures and high-end appearance command attention and make it the focal point of any home style and decor.

Powerful, elegant, and always chic, SUPERCUBE makes a dramatic statement in interior design. For the discerning customer, for the unique room, for a breath-taking approach to home theatre projection, SUPERCUBE delivers the wow-factor not only with its performance, but also with its amazing, stylish cabinet design. Its crystal-glass cabinet is perfect for adding a special and unique touch to suit any taste or room style.

www.anthemavs.co.uk



SIM2 NERO 3

When it comes to the NERO 3 from SIM2, the glass exterior suggests the future; its technological centre confirms it – a lifestyle product designed for today's demands.

LED is the source of illumination, 1-chip DLP the image technology, a combination which ensures images are bright, sharp and beautifully realistic.

With a specification list that reads: 1400-lumens of light output (the equivalent of 2000-lumens on lamp-based projectors), a 30,000:1 contrast ratio and a colour gamut 135% that of the NTSC TV standard, this is an impressive projector.

Connecting video sources is simple too, thanks to the wide choice of inputs that includes two HDMI 1.4 sockets. Plus, easily integrated into any interior design and delivering SIM2-quality picture performance, NERO 3 will enhance any home entertainment experience.

The NERO 3 is offered in crystal-glass surfaced BLACK (NERO 3 BG) or WHITE (NERO 3 WG).

www.anthemavs.co.uk



PROPER TRIPOD PROJECTOR SCREEN WHITE

The Portable Tripod Projection Screen PSDA90 is perfect for education, commercial presentations or residential home cinema. The lightweight and steady tripod design is equipped with the durable budget octagonal metal case which is available in black or white color. It includes convenient locking and hanging mechanism for adjusting height. Its case with heavy-duty roller and reliable spring inside also offers easy and stable operation. Black backed screen material eliminates light penetration for superior color reproduction. Standard 4-side black masking borders. Matte white screen material with 1.0 gain and 160° viewing angle is durable and easy to clean.

T: +44 (0)1494 471 100, E: sales@direktek.co.uk
www.direktek.co.uk

Features

- Durable budget octagonal metal case available in black or white color
- Lightweight and steady tripod installation design
- Case with heavy-duty roller and reliable spring inside
- Height-adjustable tripod with construction for convenient locking and hanging
- Standard four-side black masking borders
- Black backed screen material eliminates light penetration for superior color reproduction
- Matte white screen material is durable and easy to clean
- Available as 90- or 100-inch screen
- Price: from £37.00

PROPER PROJECTOR TROLLEY

This projector trolley is a solid solution for mobile projector use. It consists of two independent platforms, one for your laptop and one for your projector. It has a height of 700-900mm and a carry weight up to 10kg. It is ideal for both corporate and educational use.

T: +44 (0)1494 471 100, E: sales@direktek.co.uk, www.direktek.co.uk

Features

- Table top size: 70x50cm
- Large shelf dimensions (projector): 455mm x 455mm (WxD)
- Small shelf dimensions (laptop): 300mm x 450mm (WxD)
- Max load: 10kg/22lbs
- Height: 700-900mm
- Price: £30.00



JVC PROJECTORS

Since 2011, JVC has been developing 4K precision projectors delivered by e-shift technology. Reflecting the accelerating trend into the 4K and HDR era, JVC have announced a new line of D-ILA projectors which comply with the latest HDMI/ HDCP2.2 standard. The new Ultimate High Dynamic Range Projectors are the DLA-X9000, DLA-X7000, and DLA-X5000 (Black and White) which will be available from November. The performance boost is driven by a new high power lamp and further upgrades to JVC's original e-shift technology, a combination which delivers both high brightness and a high clarity 4K picture.

JVC's new models have the highest brightness in their class which is being delivered by new high-power lamp. The new 265W high-power lamp means the latest JVC projectors can produce powerful images with greatly increased brightness compared to the previous X500, X700 and X900 series models. This large brightness boost helps deliver clear images on big screens, even under ambient light environments such as found in living room.

JVC continues to hold the industry's leading native contrast ratio. This is achieved by combining a new optical engine optimised for usage with the JVC D-ILA device, with the high power lamp, plus JVC's user-selectable Intelligent Lens Aperture to further boost contrast. These new models High Dynamic Range (HDR) Compatibility means there is a larger range between the brightest whites and darkest blacks and wider colour gamut. The combination of high brightness power lamp, and JVC's inherent high native contrast capability means the new JVC projectors can reproduce highlights and detail in dark scenes, which are simply incomparable to conventional projectors.

With the current expansion of 4K streaming and the next generation Blu-ray soon to be released, JVC has incorporated the latest HDMI/ HDCP2.2 standard. Both HDMI inputs will be compatible so two 4K copy protection products can be connected directly. These latest HDMI inputs will be capable of handling data transfer rate up to 18Gbps, which can deliver full spec native 4K signals such as 4K60p 4:4:4, 4K60p 4:2:2/36bit and 4K24p 4:4:4/36bit. This will mean a great improvement in colour tone and gradation.

Multiple Pixel Control is another JVC original technology which features in the new Ultimate High Dynamic range improving the JVC projectors' performance. The Multiple Pixel Control is part of Super Resolution technology created with a unique JVC algorithm which will realise the ideal performance suitable for each scene. By selecting the Auto mode, natural and expressive 4K images can be enjoyed without any complicated picture adjustments.

The new JVC projectors will be equipped not only with JVC original blur reduction technology Clear Motion Drive, but also with new technology called Motion Enhance. This technology will minimise the motion blurs significantly by optimising the drive of the D-ILA device. Importantly it is also compatible for 4K and 3D signals, to give smooth and detailed image for a variety of images.

www.invisionuk.com



SCREEN INNOVATIONS 7 SERIES ZERO EDGE IN BLACK DIAMOND

The best projection screen money can buy, when Screen Innovations introduced Black Diamond® to the world in 2006, they turned the industry upside down and created a new category of product. The same thing happened when they created Zero Edge® and the combination of these two products is nothing less than awesome.

Available in custom screen sizes and configurations up to 150-inches, and sold for a price that is often less than 80-inches or larger flat panel TVs, the combination of a Zero Edge® screen and projector can deliver significantly more value per square inch than flat panel TVs.

Black Diamond projection screen materials deliver an unbeatable experience in nearly any type of environment. Utilising proprietary ambient light rejecting technology, Black Diamond eliminates the need for a dark, dedicated entertainment space and allows two-piece projection to exist in high brightness areas anywhere, anytime.

Black Diamond is the most versatile screen solution available for Residential and Commercial applications being suitable for almost every application making it the best choice for the Custom Installation market.

www.anthemavs.co.uk



DOES YOUR CLIENT'S SYSTEM NEED SOME MUSCLE?

Meridian Audio's **G55** and **G57 Amplifiers** deliver award-winning, high power, Hi-Res performance for multi-channel and two-channel passive speaker systems.



RACK-MOUNTABLE



PURE POWER



EASY-TO-INTEGRATE



CEDIA
MEMBER

FIND OUT MORE:
CALL 01480 445678
meridian-audio.com

HDANYWHERE

MHUB 4K HDBASET MATRIX WITH HDCP 2.2

AVAILABLE IN 4X4 AND 8X8.

HDBaseT-Pro systems that support 4K@60Hz 4:2:0 with HDCP 2.2, as well as 1080p. mHub 4K systems are sold as complete install kits, which include PoH display receivers, two-way IR kit, and bundled HDanywhere Control App for iOS and Android.



SHIPPING NOW.

WWW.HDANYWHERE.TRADE

Distributed by:

HDC > ONE

awe

Unicam
audio visual

AERIALS & CABLE
EQUIPMENT



Download App from :





INSIDE CI

SVI's unsleeping Seer of CI, DAVE SLATER, focuses his third eye on all the latest comings and goings in the world of Custom Install...

The months are just flying by and I am constantly shocked when the Ed drops me an email that it's time to put pen to paper once more. So, DSE are now up and running in the south, the first refurb has been bagged and we start in two weeks. A nice little project that will see the whole of the back ground floor of a four-bedroom house being made open plan. Steel, bi-fold windows, kitchen and some nice lighting all glued together by Control4.

It's also been really busy on the magazines with AWE and Invision both doing their own technology expos. We visited AWE HQ first, and one big attraction at AWE is its Dolby Atmos/DTS: X home cinema. The room has had a significant overhaul since its opening, with a Marantz processor and power amp combo now providing the sonic muscle and an Epson laser projector delivering images. It looks and sounds excellent, however there are less obvious additions and the room now has two Draper screens. Joining the original electric tab-tension screen is a new Clarion fixed frame screen with ReAct fabric. This is a silver-grey light-rejecting fabric with the same gain +1 gain as the original matt white screen. It's designed to give better contrast and colour accuracy where there is some ambient light in the room. On demo it certainly improved the black level performance of the cinema, and clearly negated the effects of room mood lighting. The back-end has also been revamped. It's now fitted out with Sanus 44U 85-inch tall component racking. In the rack we spotted the new Panasonic UB900 4K Blu-ray player, alongside a couple of tried and tested Denons, and the HDanywhere 8x8 Mhub 4K distribution system.

MOTORING ON

Onto the Invision expo, which is badged up Home Technology Showcase, Invision decided to hold it back at the Merc-Benz World venue which just seems perfect for this type of show.

We arrived at 9:30am to see a queue forming to get in, so, as usual, the show was very popular. LG had on-show their latest range of OLED screens that we viewed out at CES earlier this year; the picture is stunning with amazing black levels that walk all over the standard LED screens out there. We were interested to see that Invision has taken on distributing Screen Innovations projector screens, screens designed to be used in rooms with lots of light. On display was the company's Black Diamond screen – this remarkable bit of home cinema kit seemingly defies the laws of physics to deliver brightness and contrast-boosting reflective properties that we have never seen before, and all for a tiny fraction of the cost of one of Panasonic's 103-inch plasma screens. Screen Innovations marketing blurb says the Black Diamond II can improve the contrast of your projector by as much as 300%, and looking at the images on the screen we believe them.

Invision has also coupled with Comelit to distribute their door entry systems. Installers can now supply Comelit's SimpleHome home automation solution which makes use of a multi-purpose device as a controller. The user can decide what to control, be it lights, automation, thermostats, energy consumption and door entry control. SimpleHome also supports remote system control via the Comelit smartphone app. A core function of SimpleHome is video door entry, with the facility for call recording by visitors and a



Visitors raced to see the highlights of Invision's Home Technology Showcase

touchscreen monitor with automatic display and command activation that is located in the house or apartment. Comelit can also provide door entry systems for an unlimited number of users, with simultaneous conversations and no distance limitations from a single backbone on a LAN.

LODE-BEARING

So, what else has caught my eye this month? Well, one product that we first saw at ISE has now hit our shores – Ihiji, the cloud-based technology management solution company, has launched ServiceManager, a new customer support suite as part of its Software as a Service (SaaS) tool. Ihiji ServiceManager helps home technology professionals, security monitoring firms, and systems integrators generate recurring monthly revenue through effectively managed, proactive annual service plans.

Providing cost-effective technical support and after-sales service (aka service tickets), is often a challenge. This new software package has a raft of features, including Customer Warranty tracking, Recurring Service plan tracking, RMR invoicing and billing, Customer contact management and Technical support ticketing and tracking. The package is based on "extensive market research and feedback" from dealers who use the Ihiji Invision platform for remote network management and monitoring. Ihiji says that, in its experience, most custom installers do not have an efficient way to capture and track service tickets. As a result, clients can take their business elsewhere. If you want a closer look at this software contact Habitech for a demo.

Okay, back to putting some more new kit into DSE HQ. We just took delivery of the LODE streaming service, a little box of tricks that brags it can stream music at 32bit 192khz and comes with Tidal integration. It also has a Control4 driver that will allow for total integration with our demo room products, more news on this next month when I have tested it to bits.

Dave Slater is MD of DSE Group, incorporating DSE DIGITAL.

FOR FURTHER INFORMATION CONTACT:

dave@dsegroup.co.uk www.dsegroup.co.uk T: 0207 402 4603



Sony VPL-VW520ES projector
"We've long admired Sony's 4K SXR D projectors, but with the VPL-VW520ES the brand has raised the bar higher still".



Join us at LinkedIn Group INSIDE CI

www.insideci.co.uk

www.twitter.com/insideci



ROUND THE BENZ



Over two days at Weybridge's Mercedes-Benz World in May, Invision UK and Anthem AV proved to all comers that they're not just distributors, but a distribution deities...

Steve Beahan, MD of Invision UK, must have been delighted. At 9am on the first day of his Home Technology Showcase, the punters were already queuing to get in. Indeed, over the full course of two days, custom installers flocked from far and wide for the opportunity to get up close and personal with the latest CI and AV product, chat mano-et-mano with the manufacturers, network with other of their install ilk and, of course, attend info-tastic keynotes.

In total, Invision UK's 2016 show attracted a whopping 369 visitors, plus assembled press – namely us and the constantly video camera-carrying Inside CI's Dave Slater – another record-breaker for Beahan and the boys and a show which worked to assure even the most pessimistic that the industry is back on the up.

The exhibitor list read like a who's who of home technology's great and good, in alphabetical order: Anthem, Aquavision, Artnovion, AudioControl, Autonomic, AV Racks, Comelit, Enado, ICE, Janus, JVC, LG, LILIN, Luxul, Moovia, Onkyo, Origin Acoustics, Paradigm, Pioneer, Pro Audio Technology, Pro Control, Rako, RTI, Screen Innovations, SIM2, Sony, Trinnov Audio and Wyrestorm, all of whom brought both their A-game and a selection of top-end tech-kit for the eager visitors to get hands-on with.

HANDS-ON AT HTS

Held at the same venue as last year, 2016's HTS saw the Mercs remain in place, exhibitor stands surrounding them, adding to the high-end high-tech

atmosphere of the show. After all, who wouldn't drool over the sight of Paradigm's latest slice of loudspeaker aural sex standing resplendent in the same blue livery as the Merc behind it? Or LG's eye-openingly awesome OLED option redefining the boundaries of television technology while an AMG broods angrily in front? Nobody, that's who.

Amongst all the shiny new kit were some shiny new faces too. Trinnov Audio may not be a familiar name yet in the UK industry, but having checked out this French firm's array of high-end Hi-Fi and Home Cinema kit, I can safely say that, now under Anthem's banner, that is all about to change.

Another fresh face to these shores made their debut at the show was Moovia, a German maker of some seriously stylish home cinema seating. Offering options rather different to the usual, I was particularly taken with their Copenhagen model; as was our drafted-in SVI-extra covering the show, Lorraine, who made herself perhaps a little more comfortable than was strictly necessary in the testing of a chair.

Sony had brought their 4K HDR TV to the show, offering a viewing experience that, really is impossible to describe sufficiently with mere words or, indeed, photographs. Slim, stunning and producing images sharper, more vibrant and more detailed than, well, real life; this is something that can only really be appreciated in person; and once you have appreciated it all the fuss will make perfect sense.

Aquavision was also out in force, displaying a selection of their brilliant waterproof wares, while Origin Acoustics' stand was an

Stay on CI track
with HTS



Some 10 keynotes
kept visitors informed
and entertained

education in how to fit invisible audio perfection into impossibly small holes. And this is just scratching the surface of the wonders on offer to the visiting installers.

TAKE NOTE

But HTS is not just about touching the toys, with 10 keynote addresses available over the two days too, there was plenty of opportunity to hear and learn from the industry's best. This year's programme covered all areas of the smarthouse, audio with Dolby, Autonomic, Artnovion, AudioControl and Anthem, security with LILIN and Comelit, wireless enhancement and control with Luxul, and overall industry business advice from SIM2 and Origin Acoustic's bearded master of music, Jeremy Burkhardt.

Each keynote was well-attended provided fascinating insights into the industry that the busy installer may not have considered before... and which had definitely never occurred to certain members of the attending technology press.

The show remained busy for the whole two days – as suggested by the attendance numbers – making for an event that was bigger and better than ever and nothing less than a hit from start to finish.

The Home Technology Showcase has come a long way since its inaugural event just four years ago. This, of course, leaves Steve Beahan and the team with the problem now of facing up to their success and finding a new venue for HTS 2017 as, growing at the rate it has, even the whole World of Mercedes-Benz won't be big enough to contain it next year.

www.hometechnologyshowcase.co.uk

www.invisionuk.com, www.anthemavs.co.uk



Whipping up an HD
distribution WyreStorm

BRING THE NOISE

Unless your client is obsessed with nothing but silent movies, when it comes to completing the ideal home cinema, you'll need some serious surround speakers...

ORIGIN ACOUSTICS DIRECTOR COLLECTION

The Director Collection from Origin is filled with innovations, from the patented tweeter design to the ZipClip tool-less mounting system, from the unique woofer surround to the pivoting mid/tweeter assembly, these speakers sound better because they are better.

Origin's ZipClip tool-less mounting system is one of the many features on the Director Collection. Once the mounting hole is cut a mounting ring is inserted and clips that ride on a rail similar to a zip tie, are hand squeezed into place. The speaker assembly is then inserted into the mounting ring and locked into place with a simple clockwise twist. The system simplifies the mounting process and increases installation efficiency, which will help reduce time spent on installation.



One of the greatest benefits of the Director Collection is its incredible dispersion which is essential feature for Dolby Atmos. The pattern of sound is wider than any other ceiling speaker on the market. This means better coverage and greater flexibility in speaker placement. In addition, the speaker's unparalleled pivoting ability allows for the sound to be focused at the listening area regardless of where the speaker is positioned. These two elements are the final step in delivering incredible sound quality to the ear of the listener.

Origin Acoustics' entire Director Collection have completed all the tests to comply with the IPX6 weatherproof rating. In order to achieve this rating, all models were sprayed as installed with a high-pressure water hose for an extended period of time. This test sends water at all angles through a 12.5mm nozzle at a rate of 100-litres/min at a pressure of 100kN/m² for three-minutes from a distance of three-meters. In order to complete this test each model must not fail or show water seepage.

Creating deep dynamic bass requires moving lots of air. This means bigger drivers and typically bigger enclosures. The Origin Acoustics team has developed a new design that allows them to fit an 8-inch woofer into a typical 6-inch baffle and even more impressive a 10-inch woofer into a typical 8-inch baffle. What does this mean? It's more bass in less space. The footprint in the ceiling is smaller and less obtrusive, but the sound they deliver must be heard to be believed.

www.invisionuk.com

PARADIGM MONITOR SERIES

In the early 1980s Paradigm was just an idea within the minds of a couple of 20-something's who adored music and wanted to share that love. There was no 224,000 square foot Paradigm factory, no on-site anechoic measurement chamber. Back in the day the main aspiration was to craft great sounding speakers.

Even though a lot has changed, that aspiration is still what drives them to keep creating the most accurate and beautiful sounding speakers possible. Crafted in Canada, Paradigm have spent over 30-years perfecting the Home Cinema speaker in all its forms.

With rapid prototyping and meticulous testing, Paradigm speakers are engineered to the highest standard. With every single component being designed & manufactured on site in Toronto. Paradigm set the bar for Home Cinema Audio.

The Paradigm Monitor Series is now in its seventh iteration, each new generation is an opportunity for refinement: design innovations from their higher-priced reference line ups, reference-quality component parts, cabinets and even finishes! When it comes to getting value for your money, it doesn't get better than Monitor Series. Since its inception, the Monitor Series has been a favourite of audiophiles on a budget – with Monitor Series, that hasn't changed.

The Monitor Series has many exciting features including Reference quality materials within their Drivers and Tweeters. These materials have been FEA optimised over seven generations of testing and provide the unbelievable quality.

www.invisionuk.com



ORIGIN ACOUSTICS COMPOSER COLLECTION

As Origin Acoustics invented the in-wall speaker over three decades ago, they jumped at the opportunity to revisit the process with a fresh perspective which has paid true sonic dividends. Origin Acoustics In-Wall Composer Collection features all the latest technologies and benefits of the Director Collection with their ZipClip tool-less mounting system and patented tweeter as well having a dual woofer design and the use of a 4x8 single driver, the Composer Collection takes advantage of several technologies that result in more impact and greater overall performance.

The composer THT68 Theatre speaker is the top of the line; it is the ultimate speaker for in-wall applications. Hard driving and powerful while remaining detailed and refined, this loudspeaker can do it all. It is at home in any environment and it responds to any musical or theatrical demand. All of this in a sleek, thin design that compliments any décor. If the requirement is great looks and great sound, the Composer THTR68 is the right choice.

www.invisionuk.com

EVERYTHING WILL BECOME CLEAR

EXPERIENCE THE REVEALING
CHEMISTRY OF A PURER PLATINUM



WHAT HI-FI?

Stars of CES|2016 ★

MONITOR AUDIO PLATINUM II

PLATINUM II

monitoraudio.com

MONITOR AUDIO

PRO AUDIO TECHNOLOGY

Based on proven technologies perfected in commercial cinema installations, Pro Audio products offer a unique alternative to the many problems associated with using conventional loudspeaker designs for home theatre applications. Each loudspeaker is designed and built using professional audio technology to deliver the big sound we've come to expect from motion picture soundtracks, while also offering bullet-proof design to insure many years of continued operation.

Attaining performance standards comparable to the larger SCR-3215sm reference loudspeaker in a more compact and easy to install format was no small task, but was the overriding goal in the development of the SCR-2215sm. A true three-way loudspeaker design, the SCR-2215 employs a sophisticated coaxial compression driver mounted to a single 18- x 22-inch large format horn. Employing two subsystems in one, each driver is optimised for its performance across a narrower frequency range. As such, power handling and dynamic range are increased while providing extended bandwidth. The result is a smooth, effortless presentation of vocals and instrumentation, delivered with dynamics that give motion picture soundtracks a believable sense of scale.

Low frequency duties of the SCR-2215sm are performed by dual 15-inch woofers with a system sensitivity of 102dB. Moving air with over 350 square inches of combined surface area, each low frequency driver is supported by dual ports and powered by a massive motor system weighing nearly 30-pounds. The four-inch voice coils maximise thermal power handling, allowing the SCR-2215sm to reproduce live concert sound pressure levels for extended periods of time without fear of driver failure.

To meet the demands of the broadest range of installations and possible screen sizes, the enclosure of the SCR-2215sm has been designed in a modular format. The mid/high-frequency horn and each of the two woofers are housed in separate modules, allowing the speaker to be configured vertically or horizontally as needed to suite the installation application.

As with all PRO cinema loudspeakers, proprietary Digital Signal Processing (DSP) is employed to provide all crossover functions, time correction, and very high resolution frequency response shaping, eliminating restrictive passive filter networks from the signal path. Since signal filtration is achieved prior to amplification, the output stage of each amp channel is directly wired to the input terminals of its associated driver, maximising power transfer and control. Bass is tight and accurate, and delivered with the same visceral slam experienced in the commercial theatre or concert setting.

www.anthemavs.co.uk



PARADIGM MILLENIA

The Millenia speakers from Paradigm offer sophisticated state-of-the-art Paradigm Reference technology wrapped in a sleek lifestyle design to complement today's flat-panel televisions with satin-anodised pure-aluminium domes, mica-loaded polymer bass/midrange cones, polypropylene bass cones and a highly polished black chrome finish.

Generating superior performance from an ultra-slim speaker design is no easy task. But with over 30-years' design and acoustic experience, Millenia LP and LP XL are out in front.

Like all Paradigm speakers, the new Millenia series benefit from Canada's famed National Reach council findings to ensure listening preferences are captured and maximised for the listener.

www.anthemavs.co.uk

The Millenia series have:

A new tweeter design: a sophisticated phase ring camouflaged inside the protective screen improves high frequency response. It's the details that help to deliver the defining Paradigm sound

New aluminium cones: aluminium yields less distortion than polypropylene by moving resonance out the drivers pass band. The result is clean and clear sound – in just 1¾-inch profile

New aesthetics: perforated tweeter screen and a one-piece baffle streamline Millenia LP 2's visual appeal. The result is a speaker of epic looks. And epic sound!



MONITOR AUDIO PLATINUM II

In keeping with the rigour of Platinum II design, the In-Wall's cabinet is as free of mechanical resonance as possible. Its heavily damped and cross-braced composite structure of steel back plate and 25mm (one-inch) MDF joins a front baffle made of Anti-Resonance Composite™ (ARC) material, designed to provide an optimally rigid and stable foundation for the state-of-the-art Platinum II drivers. Twin 6.5-inch RDT@II bass drivers are positioned astride a centre pairing of Platinum II's Micro Pleated Diaphragm (MPD) High Frequency Transducer and four-inch RDT II mid-range.

Precision-engineered to partner the tweeter's impressive fidelity, the mid-range driver uses an innovative RDT II (Rigid Diaphragm Technology generation II) cone, comprising ultra-thin skins of C-CAM and woven carbon-fibre, bonded to a honeycomb Nomex® core. Developed specifically for Platinum II, this extraordinarily light and rigid structure features the lowest distortion cone technology in Monitor Audio's history. The In-Wall's lightning-fast RDT II mid-driver dovetails with its MPD tweeter in a damped and sealed enclosure to generate a naturally lucid and expressive sonic quality from 300Hz to over 100kHz. Below 300Hz, dual, dished, 6.5-inches RDT II bass drivers, optimised for sealed box operation, are designed for high excursions with extremely low signal distortion.

The In-Wall has been designed for simple retro-fit installation through Monitor Audio's easy and secure Tri-Grip™ dog leg fixings. Additional room-tuning is available through baffle-mounted mid and high frequency level controls (+1/0/-1 dB). The new Platinum In-Wall II is a true wide-bandwidth speaker system optimised for in-wall applications and capable of accurate audio reproduction from 52Hz to 100 KHz for the ultimate in discreet high performance multi-channel sound.

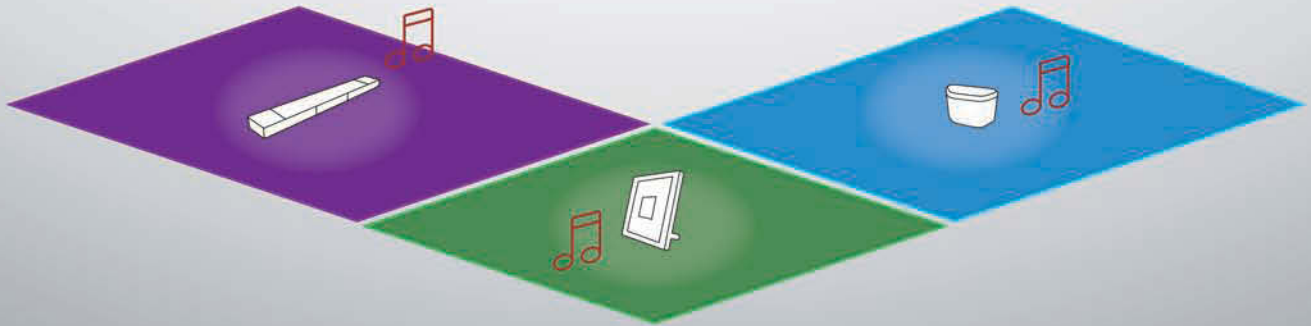
www.monitoraudio.co.uk





musicCast

Wireless Music System



The new Network Audio System from Yamaha, take control of your music and audio.

A new world of wireless freedom.



MusicCast Controller App

Control all your music and devices from everywhere in your home using one simple app. Link rooms together and share any content you like or connect Bluetooth devices as you wish. Yamaha MusicCast is designed to fit with your lifestyle and needs, with unlimited potential in the palm of your hand.



For more info visit yamaha.com/musiccast
or contact 0844 811 1115
sales.support@gmx.yamaha.com



SEPARATES WAYS

Simple one-box solutions may do for some, but for true home cinemaphiles and their installers, only separates will suffice...

On a recent team trip to visit the Epsom-based showroom Expo of those dons of distribution, AWE, we enjoyed the privilege of a demo of their latest cinema set-up and were suitably blown away by, not only the eye- and ear-elating experience, but also the breath-taking amount of consideration that had gone into the selection of every piece of advanced kit it is comprised of. Indeed, when AWE's James Drummie took me into the backroom to flash me his impressive rack, it was like gazing upon the engine room of the USS Enterprise.

But then, AWE's home cinema is designed to demonstrate just what can be achieved to installers and installer's clients alike, whereas you, as the installer, just have to know what options are open, and which are open and best within your client's budget.

To that end, while we cannot offer you the absolutely incisive expert advice of AWE and other equally fine distributors of home cinema set-ups extraordinaire, such as InvisionUK, we can at least let you know what they themselves recommend! And so...

MARANTZ SR5010 AV RECEIVER

Leading UK Distributor, AWE, has added the new Marantz SR5010 AV receiver to its growing product portfolio. Available exclusively to AWE customers, the SR5010 continues Marantz's ethos of combining a sleek aluminium exterior with powerful components.

This model joins an already impressive line-up of Marantz AV receivers. Quality, connectivity and ease of installation are three factors that make this receiver the ideal products for any custom installer. It also offers great end user features to ensure that the client is always satisfied with their AV system.

This 7 channel discrete power amplifier produces an impressive 180 watts per channel, and includes a Quad Core DSP and retuned sound. Responding to industry developments, the SR5010 has the ability to connect a 5.1 surround sound speaker system and two additional overhead speakers or two Dolby Atmos-certified up-firing speakers to provide an impressive Dolby Atmos set up. The option to upgrade to DTS:X will be available later in the year.

The Marantz SR5010 features eight HDMI inputs with 4K 60Hz passthrough and HDCP 2.2, two HDMI outputs, with multi-source and

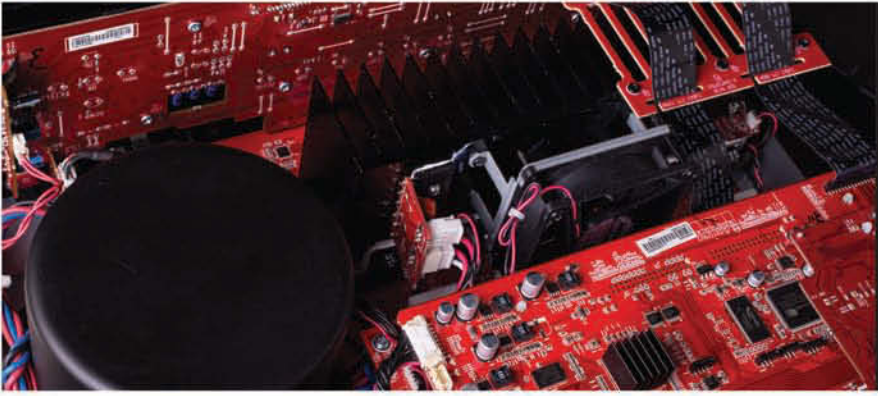
multi-zone. It also includes 4K 30Hz and 1080p scaling and built-in Wi-Fi and Bluetooth. Thanks to the DLNA 1.5 compatibility, the receiver can also continuously playback music files with no gaps, including formats such as FLAC HD, DSD, AIFF, Internet radio, Pandora, Spotify Connect and Airplay. There is a Marantz AVR remote app available for iOS and Android devices, which provides an easy control method for all these features.

A full package of Audyssey audio technologies are on-board the SR5010. These handle real-time volume adjustment, offer improvement on surround sound effects and can also auto-calibrate all speakers to suit the room's particular listening environment and speaker characteristics.

Installation is made easy with the Marantz Setup Assistant and Quick Start Guide. The Setup Assistant features clear on-screen graphics and text that easily guides installers through the setup process, optimising critical system settings for the best possible sound quality.

T: +44 (0)1372 729 995
E: sales@awe-europe.com
www.awe-europe.com





MRX AV RECEIVERS

BREATHTAKING
SONIC
PERFORMANCE
1120 | 720 | 520

- + Dolby Atmos*
- + DTS:X Ready*
- + Anthem Room Correction
- + Hi-Res Audio 24-bit / 192Hz
- + HDMI 2.0a
- + HDCP 2.2
- + 4:4:4 Subsampling at 4K60
- + High Dynamic Range (HDR)
- + 4K 50/60 Switching
- + 3 Year Warranty
- + UK Service Centre

*Dolby Atmos & DTS:X Only Supported by MRX 1120 & 720

ANTHEM

anthemav
solutions

creating the cinema experience at home

steinway house, worth farm, worth lane, little horstead, east sussex, tn22 5tt | 01825 750858 | orders@anthemavs.co.uk | www.anthemavs.co.uk

ANTHEM MRX RECEIVERS

Anthem's award-winning Third Generation MRX Series of high-end multi-channel A/V receivers are known all over the world over for their excellent sound quality, efficient power handling, and the ease with which they integrate into an entertainment system.

The MRX Series includes the MRX520, MRX720 and MRX 1120. Features for the models include the latest UHD video formats, HDMI 2.0a with HDR and HDCP 2.2, 18.2 Gbps switching, 4:4:4 at 4K60, 10 bits, BT.2020 and more. For Hi-Res Audio enthusiasts there are premium-quality differential-output D/A converters with 32-bit conversion and sampling rate optimized filters. Anthem Room Correction (ARC), is included, and has improved functionality with enhanced correction algorithms, memory for four speaker configurations allowing greater flexibility and an easier to use target panel for custom settings.

Anthem is also breaking new ground by being the first AV Receiver company to feature DTS Play-Fi® technology (MRX720 and MRX1120 only). Their new generation of MRX AV Receivers provides listeners the freedom and flexibility to stream their music over a Wi-Fi network to any number of connected speakers once paired with the Play-Fi® App. Unlike other wireless platforms, DTS Play-Fi® streams music without adding compression and it is an open system allowing listeners to mix and match DTS Play-Fi® enabled Audio products from a selection of top audio brands. Using the Android, iOS, Kindle Fire or PC apps, listeners can take advantage of endless music choices from their own libraries, including file formats up to 24-bit/192 kHz, to online music streaming services like Tidal, Spotify and more.

MRX520

The MRX520 includes five channels of amplification, 5.1-channel processing and a rear panel including seven HDMI inputs (including one with MHL support), three optical, two coaxial and five stereo analogue inputs. It also has two parallel HDMI outputs, (including one with Audio Return Channel), an optical output that passes through optical and coaxial input, pre-outs for all channels including two parallel subwoofer outputs, line output and Zone 2 output. As a standard across the range users can enjoy the award-winning Anthem Room Correction (ARC) system, making set-up more convenient than ever before.



MRX720

The MRX720 includes seven channels of amplification, which is suitable for driving 7.1, 5.1.2, and 5.1 plus zone 2 speaker systems. With external amplification for height speakers the main pre-outs can be used for 7.1.4-channel systems. The input complement is similar to that of the MRX520, adding a front HDMI input which also supports MHL. Other stand-out features include Dolby Atmos® and DTS:X® (via a future software update). DTS Play-Fi® wireless multi-room audio technology is also built-in. Like with the MRX520 users will have the award-winning Anthem Room Correction (ARC) system, making set-up more convenient than ever before.

MRX1120

The MRX1120, which includes all of the benefits of the MRX720 plus more channels. 11.1 channels of processing and a rare 11 channels of amplification, all through a toroidal power supply. The internal amplification can be configured for up to 7.1.4 speakers or 5.1.4 plus zone 2. With professional-quality room correction, support for the latest immersive audio and UHD video formats, wireless music streaming and IP control and built-in amplification for 7.1.4 speakers the MRX1120 is at the centre of a new standard in high-end home cinema receivers. Like with the MRX720 users will have the award-winning Anthem Room Correction (ARC) system, making set-up more convenient than ever before.

www.anthemavs.co.uk

PIONEER VSX-1131

The fact that the Pioneer's VSX-1131 has seven amplifier channels immediately points to the major difference to the smaller models. With the VSX-1131, the serious home cineaste can also operate a Dolby Atmos loudspeaker set with its additional ceiling speakers or 'Atmos Enabled Speakers' and so get the first truly enveloping sound in all three spatial dimensions. dts:X as a second object-based surround format follows in a free firmware upgrade.

With 160W per channel, the amplifier output meets higher demands, similar to the seven HDMI ports, one of which is located on the front panel. This allows you to quickly connect external players without much hassle. The VSX-1131 supports 4K Ultra HD with HDR on every HDMI port, while it can convert Full HD into 4K using its powerful video scalers.

Music lovers actually no longer need to connect a player to the VSX-1131, because the receiver already has all the various streaming options installed. With Spotify, Tidal and Deezer, all the payment streaming services are supported; with the latter two even providing full CD-quality. Tuneln adds thousands of web radio stations, while AirPlay, Google Play and Bluetooth



provide matching wireless access to every tablet or smart phone. And if you're planning a multi-room system in the near future, you'll be happy to know that the VSX-1131 is already compatible with FireConnect and so able to feed all connected sources into a corresponding system.

www.invisionuk.com

ATLAS®

the performance connection

Element

Equator

USB

HDMI



atlascables.com

Proper®

Mobile Projector Solutions

1. PTTS5AW

| Max Weight | Height | Table Sizes |
|------------|-----------|------------------------|
| 10kg | 700-100mm | 400x420mm 500x420mm |

£26



2. PTTS6W

| Max Weight | Table Heights | Table Sizes |
|------------|-------------------------|------------------------|
| 10kg | 700-950mm 850-1100mm | 400x350mm 300x350mm |

£32

direkTek



Home and Next Day Delivery



www.direktek.co.uk



sales@direktek.co.uk



01494 471100

Images are not representative of the actual product - Trade Only - While Stocks Last - All prices exclude VAT and Delivery

Visit our brand new partner portal!
www.direktek.co.uk



BRODMANN

ACOUSTICS



Designed and made by perfectionists, any of the range will bring a live performance into your own home. Available in a range of quality finishes or bespoke finish to blend into your design, nothing is too much trouble. Hand made in Vienna and used in the Grand Festival Hall in Salzburg. Love at first sound

For your nearest dealer call 0203 5442338

More fantastic products from NuNu Distribution Limited
www.nunudistribution.co.uk

NuNu Distribution Ltd





CINEMATIC SUCCESS

Pro Install AV and Crestron came together in Croydon to create a smarthome set-up that ticks all the boxes...

A new build property in Croydon, London, designed by Pro Install AV, is a great example of Crestron lifestyle technology delivering an adaptable, flexible solution for real lives. The client wanted to achieve a modern, impressive, yet easy-to-use connected home, which was adaptable for both family life and entertainment – namely incorporating a home cinema – without having to devote valuable room space that would be empty when not being used to view movies.

The finished install cleverly answers this brief by creating an atmospheric and effective home cinema that can easily transform back to a contemporary and stylish living room. When needed, the lighting is dimmed to a low level with stunning blue hues, perfect for a relaxing night in watching a film, the large projector screen is brought down, and you have the choice of whatever content you are in the mood for. When finished, and at the touch of a button, or swipe of a touchscreen, you can raise the light levels, turn off the movie content and lift the projector screen, bringing the room back to a bright and functional family space.

COMPLETE CONTROL

This stunning home demonstrates just how technology can seamlessly intertwine with any interior design, and enhance the modern lifestyle. The client was looking for a state of the art solution that could match the standards of the new property.

As well as being impressive, the client asked Fulham based integrator, Pro Install AV to install a system that was also inherently easy to use. For this, Crestron was the only solution.

The home was transformed with a music and video distribution system, wired and wireless data infrastructure, lighting design and security system integrated into easy-to-use interfaces using the homeowner's iPads, iPhones and wall mounted touch panels.

With the flexibility of being able to control the home from many mobile devices, the home owner is able to turn music on and off, change the light settings in any area and check on the CCTV cameras from wherever they are in home, or for peace of mind, when away. For example, the family can check the security system while on holiday, or turn on the heating as they leave work, meaning they are greeted by a warm, welcoming home when they return.

When leaving the property, the family can simply press a single button on the entrance hall keypad which will turn off all non-vital house services, such as the lighting and AV. This ensures there is no wasted energy when the home is unoccupied and you won't accidentally leave the lighting or televisions on all day.

The keypad used is Crestron's Cameo® International Keypad (C2NI-CB) which offers a fresh, innovative concept in keypad design, and can be customised to fit the interior design of any room in the house, with different button configurations and several colour and texture options available.

GO PRO

Sajid Qureshi, Director at Pro Install AV comments: "Our objective was to make the home automation work in harmony with the stunning modern interior, and also to make the system as easy and user-friendly as possible for our client. With Crestron, we were confident that the system would be unobtrusive despite its technical strength, and work seamlessly with the interior design. The interface is also very smooth and simple for the homeowner to use."

This impressive property now boasts a home cinema, CCTV and door entry, intelligent lighting control, motorised blinds, multi room audio throughout and multi-room video, all made possible by the use of sophisticated Crestron home automation.

www.crestroneurope.com

www.proinstallav.co.uk





Convenient.
Seamless.
Connected.

Create your client's perfect automated home and enhance their lifestyle through Crestron's leading Pyng technology. Provide a new level of home control by streaming music in every room, automating blinds, or warming the bathroom in accordance with their morning routine. Make your clients home smarter, and their life simpler by choosing Crestron.



Experience a new world of home automation
Visit crestron.eu/pyng to find out more.



CLARITY CALLS

SVI's overlord of audio, PHIL HANSEN, returns from Germany's High End Show with a suitcase full of new Hi-Fi facts...

The UK Hi-Fi industry has just returned from its annual trip to Munich for the High End Show, probably the biggest Hi-Fi show going and certainly one of the most important. New product launches abound, deals are done and journalists are wooed by countless press conferences, as manufacturers vie for precious column inches.

For those of you who have never been to this event I'll try and describe it. It's huge – four large halls full of expensively built exhibition stands, two huge atriums with very large display rooms and countless dozens of smaller rooms full of products on demonstration. Germany likes its Hi-Fi, in fact, Germany loves its Hi-Fi and the bigger, more expensive, more weighty, more outlandish the better. Why stop at one tonearm on your turntable when you can have four? Why make the casing for your amplifier from folded steel sheet when you can laser etch it from a 50kg block of aluminium? And why settle for a petite pair of bookshelf speakers in a nice walnut finish when one with three 15-inch bass units, eight midranges and six tweeters in an 8ft high bright red cabinet will suffice?

Am I being cynical? Well, maybe, but they are excesses that one could argue represent both the very best and the very worse that the industry has to offer. Will people ever take us seriously as an industry when we peddle products of such ridiculousness that no 'real' consumer would ever give houseroom to? But on the other hand, the research and technology that goes into these devices proves that there is a lot of engineering skill in Hi-Fi that will eventually trickle down into real world products that you and I would consider buying. But I have to say there are some elements of the show that really do underline why people look at audiophiles with a degree of incredulity: beards containing the remnants of yesterday's dinner, fishing waistcoats with pockets stuffed full, decidedly short combat trousers and white socks with sandals, oh and riding a fold up bicycle round the show... need I say more? And the music! Why, oh, why do they insist on only ever listening to Brubeck playing Take Five? It's a superb piece of music, no doubt, but other music does exist – haven't they heard of Ed Sheeran, Murray Perahia, Joe Bonamassa or deadmau5?

BACK TO EARTH

There's absolutely a place for all this high-end madness. After all, every hobby has its dedicated, nay, obsessive, fans and they need their hunger for more feeding with new ways of extracting the last ounce of detail from a recording. And that keeps people in work, it keeps them inventing, perfecting and manufacturing. But Munich isn't all about the ultimate in Hi-Fi, there's also a huge amount of product that's affordable, accessible and domestically acceptable too. All the major brands have realised that if they want to be relevant to the new audience of music lovers that's happy streaming its music from Spotify, Tidal, Apple Music, or Bluetoothing it from their phones, then they have to product products that cater to these guys. Clarity members including KEF have done it with their Muo battery powered Bluetooth speaker, Cyrus with the new Cyrus ONE amplifier with built-in Bluetooth, B&W with the Zeppelin, Arcam with its Music BOOST iPhone case and Project with its USB output equipped turntable. There's a new world of customers out there with whom the Hi-Fi industry needs to connect if it is to prosper in the coming years and it's great to see some of the biggest brands rising to the challenge.

SHOW & TELL

Back in Blighty, what have we got in terms of shows that can bring these products in front of the early adopters? Clarity actively supports as many shows as it can during the year: Sound & Vision - The Bristol Show; the National



The vinyl countdown – the Styl:us Show hits its groove

Audio Show; the Styl:us Show, in our efforts to help promote better quality audio to consumers. Already this year we've been in Bristol, where we presented the annual 'Best of Show' awards, recognising the efforts put in by the exhibitors to make the show a success and awarding the third of our Honorary Fellowships. This year the worthy recipient was one of the most respected and long serving industry champions, Sony's Eric Kingdon.

The Styl:us Show took us to the Park Inn, Heathrow in April, where we were co-sponsors of this inaugural event with the Chester Group. Aimed at people who love music and have embraced the resurgence of the vinyl album, Styl:us was a dedicated analogue music event, which featured new and used vinyl for sale, turntables galore and over 20 listening rooms featuring over 50 brands. And feedback from exhibitors was very encouraging, so we look forward to watching this develop.

The rest of year is show packed also, with a return to Whittlebury Hall in September, for the National Audio Show, also organised by our friends at the Chester Group. Once again Clarity will be there, presenting the 'Best of Show' awards and hosting the Saturday evening's live music sessions.

INDULGE YOURSELF

Finally, in a welcome return of Hi-Fi to London, we were excited to learn about 'The Indulgence Show', which aims to bring a new audience to the Hi-Fi manufacturers. It's been 10-years or so since London had a Hi-Fi show, which is ridiculous when you think about it. The Indulgence Show, organised by the same people who run the successful headroom show, brings together audio and non-audio lifestyle products that will appeal to the capital city's cash rich consumer base.

Look forward to seeing you at the shows.

Along with his duties at the Clarity Alliance, Phil Hansen also runs Red Sheep, a successful marketing and PR consultancy operating within and outside the Hi-Fi industry.



SMART BUILDINGS 2016

THE UK'S ONLY EVENT DEDICATED TO INTEGRATED BUILDING TECHNOLOGY

18-20 OCTOBER | NEC



BUILDING CONTROLS | AV | SECURITY | IOT

GET TO THE HEART OF THE CUSTOM INSTALL MARKET

REGISTRATION IS NOW OPEN

smartbuildingslive.co.uk

9 SHOWS

Includes:
FREE access
to 9 shows
during UKCW

PART OF
UK CONSTRUCTION
WEEK | 2016





THE **CEDIA** SCENE

MATT NIMMONS, CEDIA's Director of Operations (EMEA), explains the benefits of becoming a CEDIA instructor and how it can boost your professional and company brand...

After receiving City & Guild's accreditation for CEDIA's Smart Home Technician and Smart Home Design Track earlier this year, and following the success of ISE 2016, CEDIA has seen a dramatic increase in the number of people attending its training sessions. For CEDIA to host such well-respected courses, the organisation relies on committed members who have a proven experience in the residential technology sector to teach CEDIA qualified courses to professionals of all expertise across the industry.

There is an abundance of benefits home technology professionals can enjoy by becoming a CEDIA qualified instructor.

BOOST YOUR BRAND

As a trained CEDIA instructor, members are given a valuable platform on which they can share their knowledge, mentor aspiring home technology professionals, and provide well-informed advice to the greater industry. As one of the go to professionals in the home technology industry, CEDIA instructors become recognised as an industry expert within their individual field.

As well as establishing yourself as an expert in the industry, becoming a CEDIA instructor can also be a useful tool for promoting one's business to prospective clients. Those that wear the CEDIA Instructor badge send an instant message to existing and prospective clients that both you and your respective company are well-respected and trusted within the smarthome technology industry.

INSTRUCT ALL OVER EMEA

As CEDIA offers its education programme to members across the EMEA region, CEDIA is providing instructors the opportunity to lead training sessions within 10 international countries, including France, Spain and India, as well as three training centres in the UK, including CEDIA EMEA HQ in Cambridge. Whether you're based in the UK, or an EMEA country, becoming a CEDIA instructor offers you the rare opportunity to position yourself, and your company on an international stage.

CEDIA members also have the chance to be part of CEDIA's education team at ISE and lead a home technology talk at the renowned international event that takes place in Amsterdam each year.

MAKE CONNECTIONS

As well as traveling across the EMEA or UK, CEDIA instructors are given the priceless opportunity meet and liaise with industry professionals. The amount



of collective knowledge held by CEDIA members is immense. Many previous and current CEDIA Instructors regard the networking perks of the job as one of the most rewarding and enjoyable benefits. Meeting fellow professionals in the home technology industry on a regular basis with exposure to their different and fresh ideas has been known to create new prospects for businesses, and is highly fulfilling for the instructor on a personal level.

INSTRUCTOR & PRESENTER COURSES

Available to CEDIA members, the CEDIA Outreach Instructor training course helps prospective instructors learn the basic skills necessary to deliver an effective presentation. Here, instructors will also receive a clear and comprehensive understanding on the respective course to ensure each presenter is confident with delivering the training session to fellow professionals.

CEDIA also hosts CEDIA Presenter courses across the EMEA for those wanting to build upon the skills learnt in the CEDIA Outreach Instructor Course. A highly interactive one-day presentation course, attendees will develop their presentation and classroom management before being presented with opportunities to present at CEDIA events and CPD roadshows.

Whether applicants have taught for CEDIA in the past or not, we encourage anyone who has an interesting in improving and widening the industry's knowledge to become a CEDIA instructor.

To view the full calendar of instructor courses available to CEDIA members please visit www.cediaeducation.com/courses. Alternatively, for all those interested in becoming a CEDIA instructor at ISE 2017, please register your interest at <http://www.cedia.co.uk/call-for-instructors> by August, 2016, where you will be considered for teaching opportunities.



CELEBRATING INDUSTRY EXCELLENCE.



CEDIA[™] AWARDS 2016

1st July 2016, Guildhall, London. Book your tickets at www.cediaawards.org

HEADLINE SPONSORS



SPONSORS

Bowers & Wilkins





CONTROLLED

Get away from it all now with Lairds of Troon to a high-end hotel suite that's just gone high-tech...

INDULGENCE

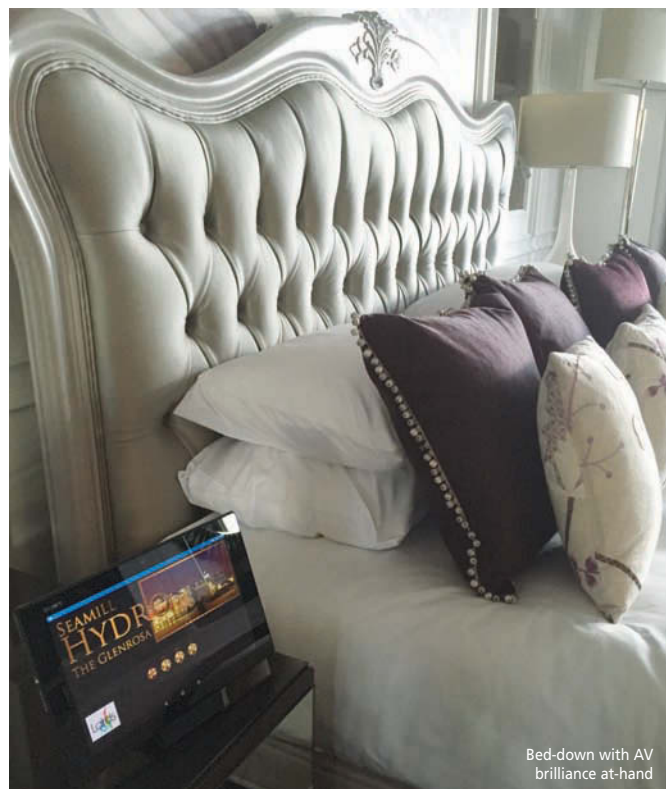
Situated a stone's throw away from the stunning Ayrshire Coastline, the Seamill Hydro Hotel boasts the perfect location to appreciate the unrivalled beauty and tranquillity Ayrshire has to offer. Overlooking the Isle of Arran and surrounded by the Ayrshire countryside Seamill Hydro has become the prime location for weddings and a popular holiday destination for families.

This family owned Victorian hotel has undergone major transformations over the past decade to bring the hotel into the 21st Century. To meet the continued demands and expectations of their customers, the hotel has been designed throughout to reflect luxury and comfort that appeals to a wide range of clientele. To provide the best experience possible, the investment in technology and control systems maximised functionality without compromising the look and feel of the hotel.

SUITE DREAMS

The Glenrosa suite is a prime example of the luxury and opulence this hotel has to offer. The suite was formed from an existing three bedrooms and three bathrooms and now is comprised of 35sq.m master bedroom, 20.5sq.m lounge, 12.5sq.m bathroom and hallway. Fully decorated throughout to reflect luxury and tranquillity, enhanced with stunning bay windows overlooking the Ayrshire coastline and the panoramic view of the mountains of Arran.

The owners desired to provide functionality and access to media systems throughout the suite. No compromise was made to the design and so it required careful planning and consideration. As the type of systems that were to be integrated and used by the residents, the emphasis was on 'effortless control'. The master bedroom was to benefit from a wall-mounted thin bezel large screen TV, the lounge was to incorporate a surround sound system and another thin bezel large screen TV. The bathroom was designed to fulfil as an area of relaxation and indulgence and, as such, an Aquavision TV was installed alongside an in-built speaker system, mood lighting and blind control.



Entertainment systems were also to be incorporated into the system that could be accessed from any location this included a PS4 and Blu-ray player.

Lairds of Troon fully understood the owners' concerns over guests being able to operate the control system independently and also that it be robust enough to withstand constant periods of use and flexible enough to allow new devices or systems being introduced to the suite. To meet these demands, RTI was integrated due to its supreme flexibility, and its suitability to merge the home and commercial environments seamlessly, thus providing the owners with the functionality, capability and easy to use interface that was required from the system.

ON THE TAB

In operation, the users interact with the system using a Sony Xperia Tablet via an interface that has been designed using the hotel's preferred signage. Guests have the ability to control the Mode lighting system throughout the suite, control the blinds, access all media on any TV or audio system installed from the user-friendly interface installed on the Sony Tablet. RTI has the capability of supporting a number of systems, therefore the customer has the option of expanding the system or changing the current system functions; the added support mechanism allowed the owner to access remote support therefore minimising any disruption to the guests.

Using RTI's award-winning RTIPanel app, users can operate and access audio/video and lighting systems directly from any of three RTI input devices located throughout the suite and maintain seamless control, even while moving from room to room. Installed in the two rooms, the KX3 features an LCD touchscreen that allows guests to control the multi-zone audio and media, making all-inclusive automation possible for anyone by simply tapping a screen.

HIGHLY HOSPITABLE

The Glenrosa Suite is a perfect example of how the hotel maintains its level of opulence, the RTI interfaces and control processor come together to create an automation environment where clients can totally immerse themselves in content and system control. Plus, using the suite of RTI tools, any system or third-party component can be easily added to the control mix, unleashing power and functionality without increasing complexity for the user.

So, in all, the result is the perfect fusion of design, comfort and control, cunning realised for the hotel by Lairds of Troon, and in a stunning location too. Feedback from the installation has been extremely positive, with the hotel owners, management staff and their guests loving the system's practicality and ease of use.

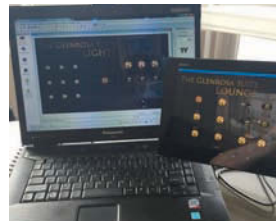
www.lairdsoftroon.com

KIT LIST

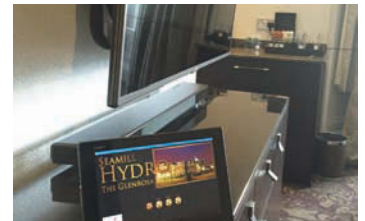
- RTI XP-6 control processor
- RTI KX3 in-wall controllers
- RTI HDBaseT Video Distribution system
- RTIPanel apps for Android
- RTI Multi Zone Audio Amp
- Wyrestorm HDBase-T Distribution Matrix
- Sonance Cinema Series Speakers
- 2x LG 55-inch XS2B Screens
- 1x Aquavision Classic 32-inch Display
- Somfy Blind Control
- Sony PS4
- Sony Xperia Tablet



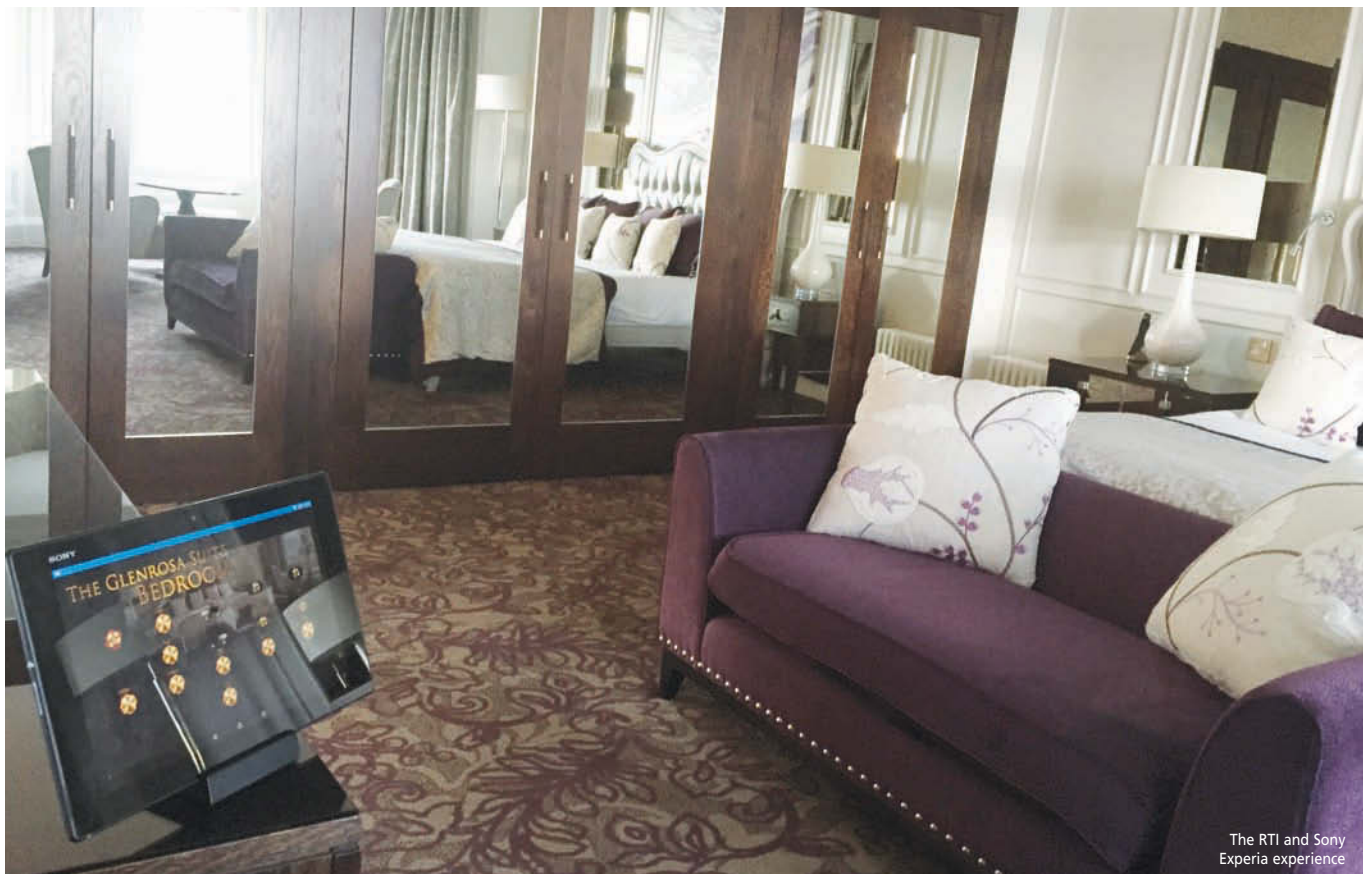
A room with many views



Elements of complete control



Comfort at its coolest



The RTI and Sony Xperia experience

SVI TRAINING CALENDAR

One should never stop learning and as Benjamin Franklin put it: "An investment in knowledge always pays the best interest." With that in mind then here is our guide to the latest training events that could prove to be a real boon to your business...

SVI Training Calendar sponsored by CEDIA. Please email your training dates to chantell@svimag.com or bonnie@svimag.com

CEDIA DATES:

Jun 7th - Residential Networking (1 Day) AWE, Epsom
Jun 8th - Advanced Residential Networking (1 Day) AWE, Epsom
Jun 9th - Wireless Residential Networking (1 Day) AWE, Epsom
Jun 10th - ESC-N Certification Exam (1 Day) CEDIA HQ, St Neots
Jun 22nd - Home Cinema for Designers (1 Day) Pulse Cinemas, Stanstead
Jun 22nd - 23rd - Home Cinema Design Package (2 Days) Pulse Cinema, Stanstead £360 Member / £510 Non-Member
Jun 23rd - Home Cinema Design Workshop (1 Day) Pulse Cinema, Stanstead
Jun 27th - CEDIA Outreach Instructor (1 Day) CEDIA HQ - St Neots

Jun 28th - THX Video Calibration Level 1 (1 Day) AWE, Epsom
Jun 28th - 30th - THX Video Calibration Level 1 & 2 (3 Days) AWE, Epsom
Jun 29th - 30th - THX Video Calibration Level 2 (2 Days) AWE, Epsom
Jun 30th - ESC-N Certification Exam (1 Day) CEDIA HQ, St Neots
Jul 22nd - Introduction to Smart Home Technologies (1 Day) CEDIA HQ, St Neots
Jul 26th - 28th - Imaging Science Foundation (ISF) (3 Days) London
THX-HAA HT Adviser Certification - 22nd Aug 2016 - Pulse Cinemas, Stanstead
THX-HAA HT Adviser & THX-HAA HT Integrator Package - 22nd Aug - 24th Aug 2016 - Pulse Cinemas, Stanstead

THX-HAA 5 Day Package Deal - 22nd Aug - 26th Aug 2016 - Pulse Cinemas, Stanstead
THX-HAA HT Integrator Certification - 23rd Aug - 24th Aug 2016 - Pulse Cinemas, Stanstead
THX-HAA HT Advanced Integrator Certification - 25th Aug - 26th Aug 2016 - Pulse Cinemas Sep 5th - Health & Safety Course - Cedia HQ St Neots
Sep 5th - 9th - Boot Camp (5 Days) Cedia HQ, St Neots
Sep 6th - Essential Technical & Professional Skills for Installers - Cedia HQ St Neots
Sep 7th - Cables, Connectivity & Structured Wiring Workshop - Cedia HQ
T: +44 (0)1480 213 744
E: info@cedia.co.uk
www.cediaeducation.com



Jun 15th - AWE Smart Home Academy - Lighting Control System Programming with Philips Dyalite
Jun 23rd - AWE Smart Home Academy - HDMI & 4K Video Distribution with HDanywhere
Aug 2nd - AWE Smart Home Academy - Foundation Workshop
Aug 16th - AWE Smart Home Academy - Lighting Control System Design with Philips Dyalite
Aug 17th - AWE Smart Home Academy - Lighting Control System Programming with Philips Dyalite
T: +44 (0)1372 729 777
E: training@awe-europe.com
www.awe-europe.com

AERIALS & CABLES EQUIPMENT

Jun 9th - Triax CCTV Training, full day in South Wales
Jul 11th - HD Anywhere 4K HDBaseT Training Full Day in Cheltenham
T: +44 (0)1242 511 511 - One to One courses also available on request for CCTV, Fibre Distribution & SMATV/IRS Systems
E: gemma.fletcher@aceonline.co.uk
www.aceonline.co.uk

ALDOUS SYSTEMS

Jul 20th - 21st - Leviton Security & Automation Part 2 - Aylesbury
Jul 22nd - BitWise Controls Part 2 Aylesbury
Sep 21st - 22nd - Leviton Security & Automation Part 2 - Aylesbury
Sep 23rd - BitWise Controls Part 2 Aylesbury
Oct 19th - 20th - Leviton Security & Automation Part 2 - Manchester

Oct 21st - BitWise Controls Part 2 Manchester
Nov 23rd - 24th - Leviton Security & Automation Part 2 - Aylesbury
Nov 25th - BitWise Controls Part 2 Aylesbury
T: +44 (0) 1296 719 582
www.aldoussystem.com

ALLTRADE AERIAL & SATELLITE LIMITED

Jun 8th - HDL Sales & Marketing - Cardiff
Jun 9th - HDL Design & Installation - Bournemouth
Jun 15th - 16th - HDL Bus Pro - Hemel Hempstead (2 Day Course)
Jun 29th - HDL Advanced Programming - Location TBC
Jul 12th - HDL Introduction to Smart Homes - Hemel Hempstead
Jul 13th - HDL Sales & Marketing - Bournemouth
Jul 14th - HDL Design & Installation - Hemel Hempstead

Sep 21st - Alltrade Trade Show - Epsom Downs Racecourse
T: +44 (0) 1273 765 180
E: training@alltrade.co.uk
www.alltrade.co.uk

AMINA TECHNOLOGIES LTD

Jun 23rd - Amina, Huntingdon
Jul 14th - Wickford, Essex
Jul 21st - Central London
Aug 4th - Wickford, Essex
Aug 18th - Huntingdon
Sep 1st - Wickford, Essex
Sep 22nd - Central London
T: +44(0)1480 354 390
E: inspired@amina.co.uk
www.amina.co.uk

AWE SMART HOME ACADEMY

Jun 14th - AWE Smart Home Academy - Lighting Control System Design with Philips Dyalite

CAI

Jun 21st, 22nd & 23rd - Basic Aerial & Satellite, Member £385 Non-Member £425 - Gateshead, Tyne & Wear
Jun 28th - Basic Home Networking & Connectivity, Member £165 Non-Member £220 - Watford, Hertfordshire
Jul 5th, 6th & 7th - Basic Aerial & Satellite, Member £385 Non-Member £425 - Hove, East Sussex
Jul 12th - Making the Bond, Member £165 Non-Member £220 - Watford, Hertfordshire
Aug 9th - Fibre Optics in Signal Distribution, Member £210 Non-Member £280 - Cardiff, Mid Glamorgan

Sep 6th - Fibre Optics in Signal Distribution Member £210 Non-Member £280 - Watford, Herts
 Sep 13th - Basic Home Networking & Connectivity (incorp CCTV) Member £165 Non-Member £220 - Watford, Herts
T: +44 (0)1923 803 030
E: <http://www.cai.org.uk>
www.cai.org.uk

CLARITY

T: +44 (0)20 8150 6741
E: info@clarityalliance.co.uk

CRESTRON UK LTD

May 24th - 26th - CTI-P101 Foundations of Crestron Programming
 May 25th - 26th - Crestron Residential System Design
 Jun 2nd - 3rd - Crestron Commercial System Design
 Jun 7th - 9th - CTI-P101 Foundations of Crestron Programming
 Jun 13th - 14th - CTI-FUSION-P Crestron Fusion Programmer
 Jun 15th - 17th - DMC-E-4K-DM Certified Engineer
 Jun 21st - 23rd - CTI-P101 Foundations of Crestron Programming
 Jun 22nd - 24th - CTI-P201 Core System Programming
 Jun 28th - 29th - CTI-SG Smart Graphics Training
 Jul 5th - 7th - CTI-P101 Foundations of Crestron Programming
 Jul 13th - 15th - CTI-P301 Advanced Programming Skills
 Jul 13th - 15th - DMC-E-4K-DM Certified Engineer
 Jul 19th - 21st - CTI-P101 Foundations of Crestron Programming
 Jul 21st - 22nd - CTI-FUSION-P Crestron Fusion Programmer
 Aug 1st - 2nd - Crestron Residential System Design
 Aug 3rd - 5th - CTI-P101 Foundations of Crestron Programming
 Aug 9th - 11th - CTI-P201 Core System Programming
 Aug 16th - 18th - CTI-P101 Foundations of Crestron Programming
 Aug 22nd - 23rd - CTI-SG Smart Graphics Training
T: +44 (0)845 873 8787
www.crestron.eu



CYP

Jun 7th - Multi-room HDMI Distribution & HDBase T System Design - CYP Shepperton
 Jul 5th - Multi-room HDMI Distribution & HDBase T System Design - CYP Shepperton
 Jul 5th - Multi-room HDMI Distribution & HDBase T System Design at CYP HQ Shepperton
T: +44 (0)20 3137 9180
www.cypeurope.com

HABITECH

ProNet - Robust Network Design, Configuration and Maintenance (1 Day Course)
 ProNet - Advanced Networking Techniques (Subnets, VLANs, Bandwidth Management, Advanced WiFi) (1 Day Course)
 ICRealtime - Hands on Product Training & System Design (½ Day Course)
 AMX - Capabilities of AMX systems and the pre-requisites to design fully functioning residential solutions (½ Day Course)
 Mode Lighting - Hands on Product Training & System Design (1 Day Course)
 WyreStorm - HD Distribution Theory and Trouble Shooting (Including HDBaseT and 4K) (1 Day Course)
T: +44 (0)1420 540 054
E: Tanya.Sworn@habitech.co.uk

INDIGO DISTRIBUTION

Jun 8th - 9th - ELAN Certification Training (2 Days) - Bangor £599 + VAT (£50 Deposit secures place) & includes a G1 Controller

Jun 22nd - 23rd - ELAN Certification Training (2 Days) - Bangor £599 + VAT (£50 Deposit secures place) & includes a G1 Controller
 Jul 20th - 21st - ELAN Certification Training (2 Days) - Bangor £599 + VAT (£50 Deposit secures place) & includes a G1 Controller
 Aug 17th - 18th - ELAN Certification Training (2 Days) - Bangor £599 + VAT (£50 Deposit secures place) & includes a G1 Controller
 Sep 7th - 8th - ELAN Certification Training (2 Days) - Bangor £599 + VAT (£50 Deposit secures place) & includes a G1 Controller
T: +44 (0)2891 455 565
E: spike@indigodistribution.co.uk
www.indigodistribution.co.uk

INVISION UK

Nest Pro
 LILIN IP Surveillance
 Introduction to RTI Webinar
 RTI Programming
 RTI Advanced Programming
 Introduction to ProControl Webinar
 Luxul Wireless Networking
 Wyrestorm Product & System Training
T: +44 (0)1359 270 280
www.invisiontraining.co.uk

IVORY EGG (UK) LIMITED

Jun 13th - 17th - KNX Certification Training
 Jul 18th - 22nd - KNX Certification Training
 Aug 15th - 19th - KNX Certification Training
 Aug 15th - 19th - KNX Certification Training

Sep 19th - 23rd - KNX Certification Training
 Oct 17th - 21st - KNX Certification Training
 Nov 14th - 18th - KNX Certification Training
 Dec 12th - 16th - KNX Certification Training
T: +44 (0)1243 572 700
E: training@ivoryegg.co.uk
www.ivoryegg.co.uk

RGB COMMUNICATIONS LTD

Jun 6th - Savant - An Introduction
 Jun 7th - Savant - Level 1 Core Training
 Jun 13th - Savant - An Introduction
 Jun 28th - Lighting Control - Essential
 Jun 30th - Nest Training - Become a Nest Pro!
 Jul 11th - Savant - An Introduction
 Jul 12th - Savant - Level 1 Core Training
 Jul 18th - Lutron - QS Homeworks Installation & Programming
 Jul 21st - Nest Training - Become a Nest Pro!
T: +44 (0)1488 73366
E: info@rgbcomms.co.uk
www.rgbcomms.co.uk

UNICAM GROUP

2K Products
 4K Products
 The Future with 4K
 Just Add Power - starter session on HD over IP
T: +44(0)113 285 8299
www.unicamgroup.com

POWER
 YOUR
 PASSION.

CEDIA™ TRAINING



CERT



LIVE



WEB



DOC

www.cediaeducation.com

Movers & Shakers

Check out the latest contact details right here...



ACA-Apex Limited
 Unit 21 Harmill Industrial Estate
 Grovebury Road
 Leighton Buzzard
 Bedfordshire LU7 4FF
T: +44 (0)1525 379 933
E: info@aca-apex.co.uk
www.aca-apex.co.uk
 We manufacture and supply innovative cable infrastructure products and solutions for the residential network and audio visual industry. Our brands include CRIS, Spider Infrastructure Systems, SRAK, and DRAK. New products are being developed all the time and can be seen on our latest innovations page on our website.



**AERIALS & CABLE
 EQUIPMENT**

Aerials & Cable Equipment Ltd
 343 - 345 High Street, Cheltenham
 Gloucestershire GL50 3HS
T: 01242 511511 / 588688
E: sales@aceonline.co.uk
www.aceonline.co.uk
Twitter @ACELtd1

- Suppliers of:
- Antiference
 - BSKYB
 - B-Tech
 - CYP
 - Comelit Door Entry
 - DemoPad
 - Flexson
 - Global Invacom
 - Global Cache
 - HD Anywhere
 - IC Realtime CCTV
 - Polk
 - Promax Meters
 - Qube Enclosures
 - Sanus AV
 - Specialist Cables
 - Sync-Box
 - Triax
 - Vision
 - Webro

Training & Technical Support via our HD Media Partnership scheme offered throughout the UK.



Aldous Systems (Europe) Ltd
 Unit 3, Printers End
 Gatehouse Way, Aylesbury
 Bucks HP19 8DB
T: +44 (0)1296 719582
E: sales@aldoussystem.co.uk
www.aldoussystem.co.uk

- Suppliers of:
- Your Connected Home®
 - Aldous Home Networks
 - Axiom
 - BitWise Controls
 - Channel Vision
 - Emphasys
 - Forte A-BUS
 - Gefen
 - iDocx
 - Installers Choice
 - Leviton Security & Automation
 - Platinum Tools
 - Proficient
 - Rako
 - ReQuest
 - SpeakerCraft
 - Triax
 - Visulant
 - VOCO
 - Voice Viper
 - Zektor



Alltrade Aerial & Satellite Limited
 Five trade counters across the South of the UK and Wales
 HQ: Unit 4 Sussex House Business Park, 274 Old Shoreham Road, Hove, East Sussex, BN3 7EU
T: 0844 225 2700 / 01273 765180
E: sales@alltrade.co.uk
www.alltrade.co.uk
 Trade only Distributors for:

- | | |
|----------------|------------|
| • Antiference | • Blackbox |
| • B-Tech | • CYP |
| • Blucube | • DemoPad |
| • Blustream | • Marmitek |
| • Flexson | • Sanus |
| • Global Caché | • Sonos |
| • HDL | • Triax |
| • Hoody | • Webro |

FREE delivery on orders over £150.
 FREE planning and technical support services.



Amina Technologies Ltd
 Cirrus House, Glebe Road
 Huntingdon, Cambs PE29 7DL
T: +44 (0)1480 354 390
E: sales@amina.co.uk
www.amina.co.uk
 Established well over a decade ago, Amina® is now the world's leading supplier of totally invisible loudspeaker solutions. The Amina® headquarters and manufacturing facility is located in Huntingdon, Cambridgeshire, England, where our products are assembled, tested at many stages by our production teams and packaged for shipment throughout the world. With sales offices and warehouse facilities in both the UK and North America and Distribution Partners around the globe, Amina provides unsurpassed sales support and fast products shipment.



Anthem AV Solutions
 Steinway House, Worth Farm,
 Worth Lane, Little Horsted,
 East Sussex TN22 5TT
T: +44 (0)1825 750858
E: online@anthemavs.co.uk
www.anthemavs.co.uk



IN TUNE WITH TECHNOLOGY
 SINCE 1937

Antiference Ltd
 Unit 100, Fradley Distribution Park
 Wood End Lane, Lichfield
 Staffordshire WS13 8NE
T: 01675 465487
E: sales@antiference.co.uk
www.antiference.co.uk

Antiference is a leading manufacturer of TV aerials and HD media distribution equipment who supply quality products for the professional installation market. With an ever expanding and evolving product portfolio and our 75 years of technical experience, Antiference can offer a reliable solution for your custom AV install.



Aquavision
 Unit 7 Riverpark Industrial Estate
 Billet Lane, Berkhamsted,
 Hertfordshire HP4 1HL
www.aquavision.tv
 Available from Invision UK
T: +44 (0)1359 270 280
www.invisionuk.com



Arcam
 Pembroke Avenue, Waterbeach
 Cambridge CB25 9QR
T: +44 (0)1223 203 200
www.arcam.co.uk



Atlantik AV Distribution
 Hollybank House, Pendleton Road
 Wiswell, Clitheroe, Ribbles Valley,
 Lancashire, BB7 9BZ
T: +44 (0)1254 822 773 / 07771 925 722
E: info@atlantikav.co.uk
www.atlantikav.co.uk
 UK Distributor and Suppliers for:

- Cineca Cinema Seating
- Screen Excellence
- Artcooustic
- Cine Italia
- Current Audio
- Liberty Cables
- Neod Mirror TV's
- DreamVision 4K Projectors
- Firetek Speaker Hoods
- ScreenLine
- Soundcast
- Sonorous
- Hoody



Atlas (Scotland) Ltd
 Units 1 & 2
 Block 11, Glenfield Place
 Glencairn Industrial Estate
 Kilmarnock KA1 4AZ
T: +44 (0)1563 572 666
E: info@atlas cables.com
www.atlas cables.com



Atlona UK
 Technology House
 10 Pinehill Road, Crowthorne
 Berkshire, RG45 7JD
 T: +44(0)1252 876 300
 www.atlona.com
 Atlona is a leading provider of innovative connectivity solutions to the Audio/Visual and IT markets.



AVF Group Ltd
 Hortonwood 30, Telford
 Shropshire TF1 7YE
 T: +44 (0)1952 670009
 E: enquiries@avfgroup.com
 www.avfgroup.com
 Designers and manufacturers of innovative TV floor stand and wall mounting solutions.



AWE Europe Ltd
 Alexander House, Blenheim road
 Epsom, Surrey KT19 9AP
 T: +44 (0)1372 729 777
 E: sales@awe-europe.com
 www.awe-europe.com



Big Red Sales Ltd
 Malt Hill House, Malt Hill, Warfield
 Berkshire RG42 6BN
 T: +44 (0)1344 893 932
 E: john@bigredsales.co.uk
 Sales Agents for: Vogels, Linsar,
 Morphy Richards, Otone Audio &
 Sennheiser



Blustream
 First Floor
 Mail Workshop
 Unit A, Little Tennis Street South
 Nottingham NG2 4EU
 T: +44 (0)115 824 0296
 E: sales@blustream.co.uk
 www.blustream.co.uk
 Blustream is the custom installation industry's fresh new option for advanced HDMI distribution. Our products have been designed and engineered by a global team of AV specialists with over 30 years experience. Extensive research highlighted the market need for an AV distribution brand that could deliver both industry leading

performance and most importantly reliability. This has resulted in us developing a range of HDBaseT and HDMI solutions that deliver advanced AV integration within any installation environment.



B-Tech International Ltd
 Bennett House
 Long March, Daventry
 Northamptonshire NN11 4NR
 T: +44 (0)1327 300 787
 E: info@btechavmounts.co.uk
 www.btechavmounts.com



Confederation of Aerial Industries Ltd
 Communications House
 41a Market Street
 Watford, Herts WD18 0PN
 T: +44 (0)1923 803030
 F: +44 (0)1923 803203
 E: office@cai.org.uk
 www.cai.org.uk
Confederation of Aerial Industries Ltd (CAI)
 The CAI is the UK's trade body for content delivery. The association represents the interests of installers, manufacturers and distributors of everything related to broadcast reception. Video and audio has spread to numerous delivery platforms alongside its familiar territory of terrestrial aerials and satellite. The CAI scope of representation and training has now broadened considerably to account for the growth in broadband delivery.



CAVE Products Ltd
 Unit 11a
 New Horizon Business Centre
 Barrows Road, Harlow
 Essex CM19 5FN
 T: +44 (0)1279 420 529
 E: sales@caveproducts.com
 www.caveproducts.com
 International supplier of quality install cables, interconnects, cabinets and consumables. Cat5e LSOH in 8 colours! Bespoke manufacturing. Same day distribution within London M25. Managed, just in time deliveries to development sites.



CEDIA UK
 Unit 2, Phoenix Park
 St Neots, Cambs PE19 8EP
 T: +44 (0)1480 213 744
 E: info@cedia.co.uk
 www.cedia.co.uk



CIE-Group Ltd
 3 Widdowson Close
 Blenheim Ind. Est. Bulwell,
 Nottingham NG6 8WB UK
 T: +44 (0)115 977 0075
 E: info@cie-group.com
 www.cie-group.com



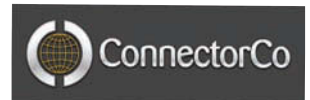
The Clarity Alliance Ltd
 PO Box 406, Stroud,
 Gloucestershire, GL6 1HF
 T: +44 (0)20 8150 6741
 E: info@clarityalliance.co.uk
 www.clarityalliance.co.uk
 facebook.com/ClarityAlliance



Clear Vision Systems
 126 West Crayke
 Marton Business Park, Bridlington,
 East Yorkshire YO16 6XW
 T: +44 (0)1262 424 900
 E: info@clearvisionsystems.co.uk
 www.clearvisionsystems.co.uk
 We stock and supply tools and equipment to support AV and network installations. Our EZ RJ45 range of tools and connectors makes network terminations quick, easy and reliable. We also have an extensive range of AV faceplates, electronic converters, network testers, cables and brush plates. Visit our web site for further details and to buy online.



Connected Distribution
 Unit 5, Eastside Industrial Estate
 Mead Road
 Cheltenham
 GL53 7DT
 T: +44 (0)1242 511133
 E: info@connecteddistribution.com
 www.connecteddistribution.com
Pulse-Eight HD Distribution
Cabasse: Streaming and Custom Install Speakers
Russound: Audio Everywhere
Yamaha: Custom Install A V Products
Sanus: Racks and mounts Atlantic
Technology: THX Home Theatre
Speakers Centralite: Lighting
Control Leviton: Network & A V Components.



ConnectorCo
 2A Albany Park, Frimley Road,
 Camberley, Surrey GU16 7PL
 T: +44 (0)1276 405 320
 F: +44 (0)1276 405 329
 E: sales@connectorco.com
 www.connectorco.com
 ConnectorCo are a trade only cable and connectivity supplier of AV, CCTV and security product. Including :- Coaxial cables and connectors Cat5e, Cat6, Cat6a Power cables and distribution, IP POE Baluns Cabinets Bespoke cables from our in-house workshop. As well as a stocking distributor for Muxlab, Neutrik, Kramer, Planet and NTI, complimented with our own branded products. If you can't find what you are looking for our dedicated technical sales staff can provide bespoke solutions to fit any request.
 ConnectorCo is proud to be a member of the HDBaseT Alliance: a cross-industry alliance working openly to promote and advance the HDBaseT standard for advanced digital media distribution... more about HDBaseT >>
 We are trade suppliers of a full range of Audio/Visual, CCTV and Active Networking products. Our comprehensive range of connectors and leads are available for next day delivery. We are a distributor of the Kramer, Muxlab, Neutrik, NTI and Planet product ranges. So, if can't find the item you need or have any question please contact our sales team.



Crestron (UK) Ltd
 Munro House
 78 Portsmouth Road
 Cobham, Surrey KT11 1TF
T: +44 (0)845 873 8787
E: uk@crestron.eu
www.crestron.eu



Current Audio
 Local Distribution
 Will call or ship same day
 Sean McDermott - President
 Direct: 0016 193282001
 Cell: 0016193426500



CYP (UK) Ltd
 Unit 7 Shepperton Business Park
 Govett Avenue
 Shepperton TW17 8BA
T: +44 (0)20 3137 9180
F: +44 (0)20 3137 6279
E: sales@cypeurope.com
Technical Support
T: +44 (0)20 3137 6690
www.cypeurope.com



Dali UK
 Stuart House,
 St. John's Street,
 Peterborough, Cambs
 PE1 5DD
T: +44 (0)845 644 3537
M: 07799 866033
E: mmi@dali.dk
www.dali.dk



DirekTek Ltd
 DirekTek House, 5 Century Point
 Halifax Road, High Wycombe
 Buckinghamshire, HP12 3SL
T: +44 (0)1494 471100
T: +44 (0)1494 768668
E: sales@direktek.co.uk
www.direktek.co.uk



Draper Group Limited
 7 Earlstrees Court
 Earlstrees Industrial Estate
 Corby
 Northamptonshire
 NN17 4AX
T: +44 (0)1536 203 101
E: sales@drapergrouppltd.co.uk
www.drapergrouppltd.co.uk



ECT Projection Screens & Accessories
 PO Box 4020, Pangbourne
 Berkshire
 RG8 8TX
T: +44 (0)118 984 1141
M: +44 (0)7973 218550
E: sales@ect-av.com or adam@ect-av.com



EPSON
EXCEED YOUR VISION
Epson (UK) Limited
 Westside, London Road
 Hemel Hempstead HP3 9TD
T: 0871 423 7766
F: 0871 222 6740
e-talk (chat):
http://etalk.epson-europe.com or
www.epson.co.uk/contact-us
www.epson.co.uk
 Epson is a global innovation leader whose product line-up ranges from inkjet printers and printing systems, 3LCD projectors and industrial robots to sensors and other microdevices. Dedicated to exceeding the vision of its customers worldwide, Epson delivers customer value based on compact, energy-saving, and high-precision technologies in markets spanning enterprise and the home to commerce and industry.



Fabriweld Tubular Steel Products Limited
 Gibbons Street, Harrimans Lane,
 Dunkirk, Nottingham NG7 2SD
T: +44 (0)115 942 2264
F: +44 (0)115 942 2267
E: info@fabriweld.co.uk
www.fabriweld.co.uk



GJ Electronics Ltd
 Units 10-12,
 Wembdon Business Centre,
 Bower Rd, Smeeth,
 Kent TN25 6SZ
T: +44 (0)1303 814224
F: +44 (0)1303 814073
E: sales@gjelectronics.co.uk
www.gjelectronics.co.uk
 Importers and distributors of AV accessories including the Signature range of brackets and HDMI leads, which comply with the latest HDMI specifications. New to the range are HDMI active leads in lengths of 7.5M & 10M with a chipset enabling these leads to be 4K compatible. Our range also includes 2C & 4C 16AWG custom install cable with pink LSOH jacket.



Habitech Ltd
 Unit K, The Loddon Centre,
 Wade Road, Basingstoke
 Hampshire RG24 8FL
T: 01256 638500
E: info@Habitech.co.uk
www.Habitech.co.uk



HDanywhere
 Unit 23, Link Business Centre
 Link Way
 Malvern Link
 WR14 1UQ
T: +44 (0)1684 576348
E: sales@HDanywhere.co.uk
www.HDanywhere.co.uk



Hoody Speaker Hoods Ltd
 GH House
 12 - 14 Albion Place, First Floor
 Maidstone
 ME14 5DZ
T: +44 (0)843 289 7020
E: info@hoody-speakerhoods.co.uk
www.hoody-speakerhoods.co.uk
HOODY™ is a range of fire and acoustic ceiling speaker hoods designed to comply with the latest IEE and UK Building Regulations relating to the fire and acoustic integrity of ceilings.



Hypex Ltd
 Unit 7, Manor House Business Park
 97 Manor Farm Road
 Wembley HA0 1BN
T: +44 (0)20 8810 5885
E: sales@hypex.com
www.hypex.co.uk



IMPACT
SCREEN SOLUTIONS LTD

Impact Screen Solutions Ltd
 Top Floor, 29 Cambridge Road,
 Hove, BN3 1DE
T: +44 (0) 1273 735 476
E: sales@impactscreensolutions.co.uk
www.impactscreensolutions.co.uk
 ISS are the UK distributor for Italian projection screen manufacturers Screenline. With 30 year's experience producing screens for both home cinema and commercial projects Screenline pride themselves of producing superb quality products at competitive prices. Screen types available include tab tensioned, in-ceiling, multi format and also fixed frame all with different fabric options. Custom sizes also available.



Indigo distribution
 79 Dunlop Commercial Park
 Balloo Link, Bangor, Co. Down,
 Northern Ireland BT19 7HJ
T: +44 (0) 28 9145 5565
E: info@indigodistribution.ie
www.indigodistribution.ie



Invision UK Ltd
 Alexander House
 3 Hillside Business Park
 Kempson Way, Bury St Edmunds
 Suffolk IP32 7EA
T: +44 (0)1359 270 280
F: +44 (0)1359 270 281
E: sales@invisionuk.com
www.invisionuk.com



No Programming - No Learning Curve - Virtual Remotes
iRemoteControl Limited
 Unit 1, Albert Road Industrial Estate
 Luton, LU1 3QF
T: +44 (0)208 420 4333
E: sales@iremotecontrol.co.uk
W: www.iremotecontrol.tv
 Home Automation for your Client on their iPhone, iPad or iPod Touch WITHOUT the hassle of Programming and at a quarter of the price of the competition. Custom Apps turned around for you within just 24 hours, ready to download. There is zero learning curve for your Client, as we use photorealistic 'Virtual Remotes' which your Clients will instantly know how to use. Full control of all AudioVisual and CCTV equipment, as well as lights, electric blinds and curtains.



Ivory Egg (UK) Limited
Unit 12 Broadbridge Business Centre
Delling Lane, Bosham
West Sussex
PO18 8NF

T: +44 (0)1243 572 700

E: info@ivoryegg.co.uk

www.ivoryegg.co.uk

Ivory Egg are a specialist supplier of all things KNX for Home Automation and Building Intelligence. As well as supplying beautiful 230v products, Ivory Egg has a dedicated training centre providing certified KNX courses and manufacturer training.



JVCENWOOD UK LTD

12 Priestly Way, London
NW2 7BA

T: +44 (0)20 8450 3282

E: hdworld@uk.JVCkenwood.com

www.jvc.co.uk



KEF Audio (UK)

Eccleston Road, Tovil, Maidstone
Kent ME15 6QP

T: +44 (0)1622 672 261

E: info@kef.com

www.kef.com



Kog Audio Ltd

PO Box 5260, Coventry CV4 0GB

T: +44 (0)24 7722 0650

E: info@kogaudio.com

www.kogaudio.com

Specialist distributor of high-end audio products & network storage solutions.

Kog Audio prides itself in finding unique solutions, that also offer class leading performance, that inspire both the installer and the end user.

Whether its our British designed & manufactured cables from Tellurium Q to the unique & incredible music & network library from Melco, our portfolio will always offer a high performance product that will satisfy the most discerning user.

Brands : Melco, Tellurium Q, Densen, Estelon, Vitus, VTL, Alluxity and Stillpoints.



Kramer Electronics UK Ltd

2, Premus, Coldharbour Way,
Aylesbury, Bucks, HP19 8AP

T: +44 (0)1296 330011

F: +44 (0)1296 330011

E: info@kramerelectronics.co.uk

www.kramerelectronics.com

Kramer Electronics, founded in 1981, is a leading manufacturer of digital and analogue video, audio and computer signal management equipment. We manufacture a range of products including: distribution amplifiers, switchers, matrix switchers, scaler/switchers, format converters, CAT X transmitters and receivers, fibre optic cables, and other products for the Custom Install market.



LILIN

Davy Avenue, Knowlhill, Milton
Keynes, MK5 8NB

T: +44 (0)870 120 5550

E: uk@meritlilin.com

www.LILIN.tv

LILIN have been developing CCTV products for every type of application since 1980, and have more recently been developing their integration within the Home Automation industry. Having transitioned our R & D resources to IP video several years ago, our dedication towards new products, innovations and technologies forms the core focus for LILIN going forward. We now integrate with most Home Automation platforms, dedicated to getting the deepest functionality possible. Throughout the years we have remained dedicated to our company philosophy of Creativity, Progress and Excellence and consequently provide expertise in digital video, bringing world's first products to the market.



LINDY Electronics Ltd.

Sadler Forster Way
Teesside Industrial Estate,
Thornaby
Stockton-on-Tees
TS17 9JY

T: 01642 754000

F: 01642 754027

E: postmaster@lindy.co.uk

www.lindy.co.uk

One of Europe's longest established and most experienced suppliers of AV, home cinema and computer cables, connectors and adapters. We stock everything from simple VGA cables to advanced Matrix HDMI Switches. Next day delivery from our huge warehouse. Special trade prices with discounts for volume orders. The one-stop-shop for your connectivity requirements. Visit our website or call our helpful sales team for more information.



Marata Vision

20 Greenhill Crescent
Watford Business Park
Watford, Herts
WD18 8JA

T: +44 (0)1923 495 595

E: info@marata.co.uk

www.marata.co.uk



PDP Belden® Preferred Distribution Partner

Maser Communications (UK) Ltd

Unit 4 Axis Park, Fort Fareham
Industrial Estate, Newgate Lane
Fareham, Hants, PO14 1FD

T: +44 (0)1329 236 000

F: +44 (0)1329 238 185

E: sales@masercomms.co.uk

Ecomm: www.maseronline.co.uk

www.masercomms.co.uk

One stop shop for Cable, Connectivity and Hardware for AV and custom installation from our fully stocked warehouse on the south coast.



Meridian Audio Ltd

Latham Road
Huntingdon PE29 6YE

T: +44 (0)1480 445 678

E: info@meridian.co.uk

www.meridian-audio.com

Meridian Audio winners of over 300 industry awards and accolades was founded in 1977. Recognised as a world leader in high performance audio, all of its products continue to be designed and manufactured solely in the UK at our Huntingdon facility. Demonstrations by appointment are also available at this site. Visit our website or call one of our helpful sales team for more information.



Monitor Audio Ltd

24 Brook Road

Rayleigh

Essex SS6 7XL

T: +44 (0)1268 740 580

E: info@monitoraudio.co.uk

www.monitoraudio.co.uk



Mount Technologies Ltd

Eastgate Business Centre,
Eastern Avenue,
Burton on Trent,
Staffordshire,
DE13 0AT

T: +44 (0)1283 260260

F: +44 (0)1283 509552

E: sales@mountech.co.uk

www.mountech.co.uk

Manufacturer of premium quality flat screen and projector wall and ceiling mounting solutions, commercial grade product including AV trolleys and AV furniture. Manufacturing in the UK allows us to offer the unique G-FIT fitment and connectivity guarantee. Bespoke design and manufacturing service is also available for your project specific requirements.

Mountech are UK distributors for: SKY Genuine Accessories, MuxLab, One For All, OnControls, Global Caché and Accell.



Naim Audio Ltd

Southampton Road

Sailsbury

Wiltshire

SP1 2LN

T: +44 (0)1722 426600

E: info@naimaudio.com

www.naimaudio.com

Naim is a UK company that has held true to the founding philosophy. Driven by a passion for the same uncompromised listening experiences that our customers demand, we seek to go beyond an audiophile sound that is technically brilliant, and strive for the glorious hit of the full experience of the music. Our range today comprises of beautifully crafted all-in-one connected products, state of the art digital streamers, integrated amplifiers and a complete upgrade path into high performance per & power amp systems.



North Building Technologies Ltd
 Room 12, Citibase Brighton
 95 Ditchling Road
 Brighton
 BN1 4ST
 T: +44 (0)1273 694422
 E: sales@northbt.com
 Twitter: @NorthBuildTech
 www.northbt.com

North Building Technologies make control products for buildings. Our controllers link systems together to optimise building performance, and our user interfaces simplify building management. Our products are configured for domestic, commercial and industrial buildings by trusted resellers, installers and OEMs. North are an independent company based in Brighton, UK since 1995.



Peerless-AV
 Unit 3
 Watford Interchange
 Colonial Way, Watford
 Hertfordshire
 WD24 4WP
 T: +44 (0)1923 205 600
 E: info.eu@peerless-av.com
 www.peerless-av.com
 Peerless-AV, a Peerless Industries, Inc. company, is a leading designer, manufacturer and distributor of audio-visual mounting, accessory and digital content delivery solutions, as well as the industry's first fully-sealed outdoor displays for commercial applications. The company's innovative AV products span commercial flat panel, video wall, projector and tablet mounts as well as AV trolleys and stands, AV racks and a wide range of other accessories including consumer TV mounts and cables. Peerless-AV's range of TV wall mounts combine aesthetics and functionality to offer convenient access to rear TV connections, integrated cable management, easy install and a clean finish. UL safety certification and four times weight capacity testing ensure end user peace of mind in any installation environment. The range includes flat, tilt, pivot and full motion wall mounts for a wide range of screen sizes up 90". Peerless-AV is also the exclusive UK distributor for Munari and NorStone designer AV furniture. For more information, visit www.peerless-av.com



Quested Monitoring Systems
 Unit 2, Kingsgate, Heathpark
 Honiton, Devon EX14 1YG
Contact: Guy Lewis
 T: +44 (0)1404 41500
 E: info@quested.com
 www.quested.com
 Since 1986, Quested loudspeakers have been in use at the top of the film industry worldwide. Our LT Series is being increasingly adopted by Home Theatre Professionals whose goal is the same absolute performance that is demanded by the cinema world's leading Composers and Directors. We are not just another speaker company, but one endorsed and trusted by the professional film industry itself.



Redline (Scotland) Ltd
 Unit 5, Blenheim Court
 Hurricane Way, Wickford
 Essex SS11 8YT
 T: +44 (0)1268 858 222
 E: info@red-line.co.uk
 www.red-line.co.uk
Distributors for Amina, Artison, Design Screen, Seura, Resolution Audio and Velodyne.
 Redline specialise in hiding AV technology. We work closely with Installers and Interior designers to deliver a finished product that does not encroach on living space design. Redline are also experts in custom grille manufacturing. We offer an extensive range of custom colour grilles that blend seamlessly into any room decor.



Red Sheep Communications
 Sylvan House, off Nailsworth Hill,
 Nailsworth, Glos, GL6 0AW
Contact: Phil Hansen
 T: +44 (0)7813 893 525
 E: phil@redsheep.co.uk
 www.redsheep.co.uk



reflectv
 Top Floor, 29 Cambridge Road,
 Hove, BN3 1DE
 T: +44 (0) 1273 735 476
 E: info@reflectv.co.uk
 www.reflectv.co.uk
 reflectv produce bespoke mirror TV's offering a great way to integrate TV technology seamlessly into any interior. Our framed mirror TV's of all shapes and sizes can add a real focal point to any room while our mirrored wall or splash back solutions are ideal for the kitchen or bathroom. With integrated LOEWE 4k technology our products will connect seamlessly into your AV system.



RGB Communications Limited
 2 Lowesden Business Park,
 Lambourn Woodlands,
 Hungerford, Berkshire, RG17 7RY
 Sales T: +44 (0)844 8800 765
 Int: +44 (0)1488 73366
 Fax: +44 (0)1488 73377
 www.rgbcomms.co.uk
 RGB, established in 1991, is a technical distributor of AV products who specialise in providing quality products and technical expertise to custom installers. Our product range covers a wide range of AV solutions for AV resellers and custom installers including; Room & Lighting Control, Networks, Audio & Video Conferencing, Projection & Displays, Connectivity, Racks & Power and Meeting Room signage.



RMG Networks
 15301 Dallas Parkway, Suite 500
 Addison, TX 75001
 www.rmgnetworks.com/products



Sanus
 Milestone AV Technologies B.V.
 PO Box 191, 6000 AD Weert, The
 Netherlands, Franklinstraat 14,
 6003 DK Weert, The Netherlands
 T: +44 (0)20 7043 2926
 E: sanus.europe@milestone.com
 www.sanus.com

At SANUS, we are known for our TV wall mounts because they set the standard for mount technology. With our innovative designs and outstanding safety features, all of our products provide a joyful experience while enhancing your lifestyle. Visit sanus.com for details.



Sensible Heat Ltd
 11A St Nicholas Lane
 Lewes, East Sussex BN7 2JY
 T: +44 (0)1273 475 834
 E: info@sensibleheat.com
 www.sensibleheat.com



Signature
 Contact: Marata Vision
 20 Greenhill Crescent
 Watford Business Park
 Watford, Herts
 WD18 8JA
 T: +44 (0)1923 495595
 E: info@marata.co.uk
 www.signaturescs.co.uk



Soundcast UK
 BC Distribution Limited
 16 Burgate, Canterbury
 CT1 2HG
 T: +44 (0)843 886 9933
 E: info@soundcast.co.uk
 www.soundcast.co.uk
 The Soundcast loudspeaker range delivers omni-directional, beautifully precise sound with the latest wireless technology from Soundcast's portable all-weather music system. Stream your playlist wirelessly as you enjoy, party and live your life.



Fibre Optic & LED Lighting
 Woodside, Scremerston,
 Berwick upon Tweed,
 Northumberland , TD15 2SY
 T: +44 (0)1289 332900
 E: info@starscape.co.uk
 www.starscape.co.uk
 Infinity - class leading home cinema Star ceiling panels. Lightweight modular system. Easy installation even in basements. Call Peter or John to discuss your project.

Our Infinity star ceiling panels were developed with the professional home cinema installer in mind. The lightweight modular panels with 100 star points per square metre are illuminated by a distributed optical harness using push-fit optical joints. Magnets on the panels adhere to resilient channel on the ceiling making installation fast and comfortable. Install a 4 x 3 metre ceiling in 3 to 4 hours from scratch, with no mess. Ideal for retrofit to previous projects. DMX light sources are available for integration with leading home automation systems. The panels are easily cut to accept ceiling-mounted speakers, downlights and projectors. Call Peter, John or David for an informal chat or fast over-the-phone pricing. Ask us also about fibre optic accent and step lighting options.

TANNOY

Tannoy Ltd
Rosehall Industrial Estate
Coatbridge, N. Lanarkshire
ML5 4TF
T: +44 (0)1236 420 199
E: support@tannoy.com
www.tannoy.com



TDI
West Farm, Popham
Winchester SO21 3BH
T : 01256 397 770
E : info@tdigroup.co.uk
www.tdigroup.co.uk

TDI are trade suppliers to manufacturers, retailers and installers in the A/V industry. Our range includes A/V interconnect leads, Audio Connectors, Telecom Cabling, Power Distribution, Patch Panels, Racks, CYP HDMI Switchers and many other accessories. Contact us now for the new 2014 catalogue.



Triax UK Ltd
Abergorki Industrial Estate,
Treorchy, Rhondda Cynon Taff,
CF42 6DL
T : 0845 601 0578
E : sales@triax.uk
www.triax.uk

Triax is an international supplier of multimedia solutions. We deliver the latest technology for professional commercial and residential AV applications. Our high quality solutions include advanced 4K Ultra HD distribution matrices and splitters plus the latest HD and IP (up to 1080p) CCTV cameras and recorders over Cat or Coax cabling. Combined with our comprehensive training and technical support, Triax is your essential AV partner.



Unicam AV Limited
90 Kirkstall Road
Leeds LS3 1LT
T: +44 (0)113 285 8299
E: sales.uk@unicamgroup.com
www.unicamgroup.com
Specialist distributors of discrete AV solutions. Customised Mirror and designer glass TVs, Invisible in-wall/ceiling flat panel speakers, HDMI matrix systems and network enabling connectivity devices. Unicam will support your business by providing products that enhance your service offering. With global leading brands such as ad notam, Novasonar, HD Connectivity and Global Cache our systems are the quintessential must have for any interior design or architecturally focused project where hidden AV is paramount to your clients' measure of success.



USD Limited
Toddington,
Bedfordshire
LU5 6JA
T: +44 (0)1525 877707
E: info@usd.uk.com
www.usd.uk.com



VIVID audio

Vivid Audio UK Ltd
6 Star Road, Partridge Green
West Sussex
RH13 8RA
T: +44 (0)1403 713125
M: +44 (0)7950 274224
E: uk@vividspeakers.com
www.vividaudio.co.uk



Vogel's
Turnstone AV Ltd
7 Anton Business Park
Andover, Hampshire SP10 2NJ
T: 0330 2020 980
E: sales@turnstoneav.com
www.vogels.com
Europe's undisputed No1 for TV wall mounts; Vogel's is known globally for its excellent range of mounting solutions for LCD, plasma/LED screens, audio-visual equipment and tablets. Vogel's products combine versatile functionality and robust performance with unique and distinctive designs.



WATERFALL AUDIO
SOUND DESIGNERS
Waterfall Audio Glass Speakers
Xclusive Audio Visual
2 Mount Pleasant Road
Hastings, E Sussex TN34 3SB
T: 01424 431144
T: 07917 133548
info@xclusiveav.com
www.xclusiveav.com



WyreStorm Technologies
22 Ergo Business Park,
Kelvin Road, Greenbridge,
Swindon, SN3 3JW, UK
T: +44 (0) 1793 230 343
Fax: + 44 (0) 1793 230 583
E: sales.uk@wyrestorm.com
www.wyrestorm.com
WyreStorm is an award winning global manufacturer of leading edge digital HD and UltraHD distribution technology for Commercial ProAV, Residential and Retail applications. Specializing in the development of innovative solutions over HDMI, HDBaseT and HD-over IP technologies, WyreStorm proudly offers customers around the world the highest quality and reliability in its wide range of distribution and control products.



Yamaha Music Europe GmbH
(UK)
Sherbourne Drive
Tilbrook
Milton Keynes
MK7 8BL
T: +44 (0)1908 366 700
http://uk.yamaha.com

Want to make sure your company gets the recognition it deserves?

To have your details added to our **Movers & Shakers** listings please contact:

Bonnie on: +44 (0)1206 506 249

Email: bonnie@svimag.com

Chantell on: +44 (0)1206 506 254

Email: chantell@svimag.com

We want your RECRUITMENT

- THE RIGHT CANDIDATE IS OUT THERE AND WE CAN REACH THEM
- ONLINE RECRUITMENT - CHECK THIS OUT DAILY

www.svimag.com

SHOWROOM SHOWCASE: DSE

Resettling in the south, the DSE Group has set-up shop in London, opening the doors on its stunning new HQ...

A new state-of-the-art home automation showroom is opening its doors in Craven Terrace on 1st May this year. The new DSE Group showroom is a modern space designed to demonstrate the latest in high-tech integration, as well as beautiful bespoke furniture.

On arriving you will be greeted by a living room setting that will blow your mind with its 55-inch Samsung Ultra High Definition (UHD) screen, streaming 4K content and high definition audio. The integration is based around a Control4 system that manages the TV and audio as well as the heating and blinds.

The acoustics in this room are particularly remarkable. There are two luxury tower speakers from Meridian Audio, but there are also in-wall invisible speakers disguised behind the wall that houses the TV. Having the two options side by side, means that you can experience it live and choose what will best suit your requirements.

The lighting, with all its different mood settings, is controlled via a RAKO system. And there is also a third generation Nest learning thermostat, that can be controlled remotely via any mobile device, it has auto-schedule and auto-away capabilities, allowing it to be greener and not waste energy when vacated.

The showroom continues onto an office area, a kitchen, meeting room and a toilet, all finished in modern clean-lines with the best furniture and audiovisual equipment.

NORTHERN EXPOSURE

DSE Group started trading in 1992, developing mid- to high-end properties in the north east of England. The company grew fast and in 2000 DSE Digital was launched adding home automation to the group's offerings. Now DSE has taken a big step and moved its headquarters to London.

Dave Slater, founder and Director of DSE Group, explains: "London's property development growth is significantly superior to anywhere else in the UK. We chose W2 as there is a significant amount of investment poured into the borough. There is the Whiteleys shopping centre, Cross Rail and many vibrant businesses blooming in the area."



"The showroom is now the beating heart of DSE. We have spent a lot of money to show potential clients the quality of our home automation and manufacturing company."

Dave also explained that he wants to do his bit for the community, by employing local people and opening its doors for local events.

The advantage of having a physical store, instead of the more economical online option, is that people can experience the technology. Dave remarks: "Online can only show you prices and products, it cannot give you inspiration. Clients spend a lot of money with us and we provide a complete tailored service."

DUE SOUTH

The showroom took just three months to develop, but it wasn't without its hurdles. "It's always hard to come up with new design concepts," points out Dave. "There was a lot of building work, but what took longer for us was buying the right products for this project. It's all about connections in the design world and fortunately we have good ones. We love bouncing ideas off other property developers. The project did run smoothly but added lots of stress on actually root-planting a northern business and transferring everything to the south."

Partnerships are important for DSE Group and for this project it called upon the expertise of interior designer Simon Cavelle. The main challenge they faced was fitting everything on a not very large space but still achieve a sense of spaciousness, comfort and luxury. To keep the showroom fresh, the soft furnishings will change on a quarterly basis and DSE has agreed with a local art dealer to supply different art pieces also quarterly. Why not contact Dave and go and visit for yourself?

T: +44 (0)207 402 4603

E: info@dsegroup.co.uk

www.dsegroup.co.uk



CAN'T WAIT UNTIL JUL 15TH FOR THE NEXT ISSUE?

**THEN REMEMBER TO FOLLOW US ON TWITTER AT @SVIMAG
AND LIKE US ON FACEBOOK AT SVI MAGAZINE FOR YOUR DAILY DOSE OF FIRM INDUSTRY FACT!**

SVI: THE INDUSTRY'S MOST TRUSTED SOURCE OF AV AND CI NEWS, VIEWS, REVIEWS AND INTERVIEWS.

ISSN 1478-1123

Editor: Stuart Pritchard

Publisher: Tony Phelps

Design: Steve Streeting, Lee Francis,

Hayley Underwood, Ben Kemp & Sarah Hilder

Advertisement Design:

MS Typesetting & Design

The SVI advertising team:

Bonnie Howard

T: +44 (0)1206 506 249

bonnie@svimag.com

Chantell Keston

T: +44 (0)1206 506 254

chantell@svimag.com

Contributors: Phil Hansen,

Dave Slater, Matt Nimmons

Design & Repro:

MS Typesetting and Design

T: +44 (0)1206 505 470

Circulation Manager: Mick Orrin

T: +44 (0)1206 505 912

Subscriptions: To ensure you receive your copy of SVI every issue, go to www.svimag.com and simply fill in the online form

Accounts Admin: T: +44 (0)1206 505 900

Published By: Aceville Publications Ltd, 21/23

Phoenix Court, Hawkins Road, Colchester

Essex CO2 8JY

Not for correspondence

Printed in England All contributions are submitted and accepted on the basis of a non-exclusive worldwide licence to publish or licence to do so unless otherwise agreed in advance in writing. *Sound Vision Install* recognises all copyrights and trademarks. Where possible, we have acknowledged the copyright holder. Contact us if we haven't credited your copyright and we will correct any oversight.

All contents © Aceville Publications Ltd While we make every effort to ensure that everything we print in *Sound Vision Install* is factually correct, we cannot be held responsible if factual errors occur. Please check any quoted hardware specifications with your supplier before purchase. The views expressed in this magazine are not necessarily those of the publisher.

Copyright Aceville Publications Ltd ©



Introducing AcoustaScape The Perfect Patio Solution

Create a stunning, full-range and affordable listening experience for everyone



AS41 Hi-Fi Landscape Audio System:

- 4x two-way satellite speakers
- 1x in-ground 8-inch subwoofer

Features include:

- Scalable system - add up to 8 additional speakers
- Provides perfectly even sound coverage in areas up to 3,000ft²
- Connects to Zone 2 on an AVR *or any loudspeaker output on an amplifier*



invisionuk To find out more, call the Invision UK sales team on **01359 270280** or visit **www.invisionuk.com**

All trademarks are the property of their respective manufacturers. E&OE. Copyright © Invision UK Ltd 2015. Invision UK Limited, Alexander House, 3 Hillside Business Park, Kempson Way, Bury St Edmunds, IP32 7EA.

16 PORT USB

TABLET CHARGING STATION

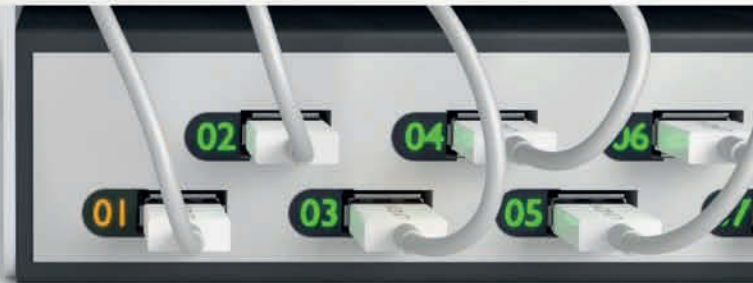
LINDY[®]
CONNECTION PERFECTION



IDEAL FOR SCHOOLS,
COLLEGES, RESTAURANTS, & OFFICES...

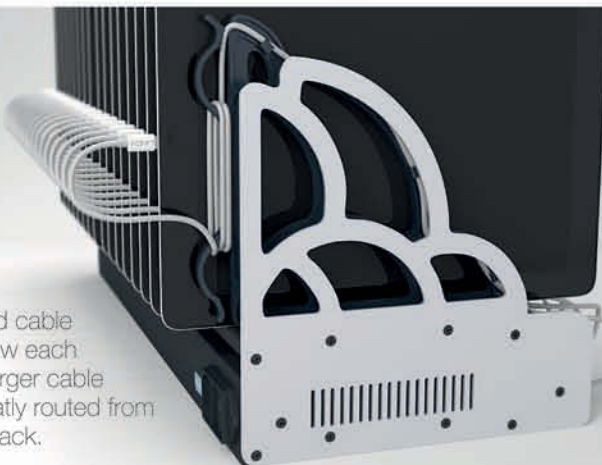
...or anywhere that multiple tablets are deployed. Can be used with iPads, iPhones, Android tablets, smartphones or any device that charges via USB! Allows you to sync iPads and iPhones using Apple's Configurator software.

A display shows the charging rate of the selected port. Provides 2.1A on each port for super fast charging of all devices.



Coloured LEDs indicate charging status at a glance: slow, fast & fully charged.

Integrated cable ties allow each USB charger cable to be neatly routed from front to back.



Versatile installation options: the divider module can be separated from the USB station which can then be rack mounted using the supplied kit.



Call 01642 754000 or email postmaster@lindy.co.uk for details

lindy.co.uk