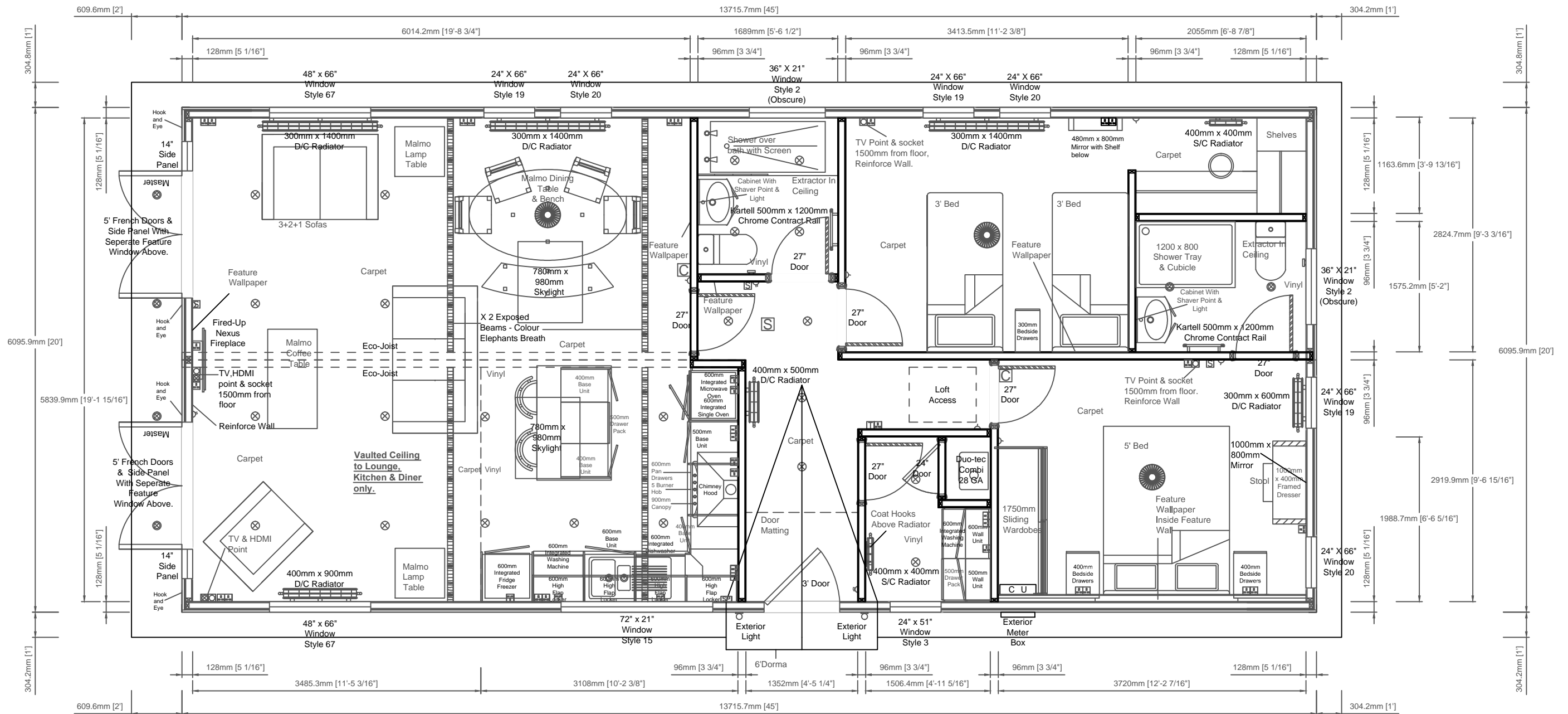




Elevations Are For Illustrative Purposes Only



Room Sizes		
Rooms	Length	Width
Lounge/ Diner	19'9"	19'2"
Kitchen	10'3"	9'7"
Bathroom	5'7"	6'3"
Bedroom 1	12'3"	9'7"
Bedroom 2	11'3"	9'4"
Ensuite	6'9"	5'2"
Wardrobe	6'9"	3'10"



Unit 4, Pytchley Lodge Road Industrial Estate, Kettering, Northants NN15 6JQ
 Tel: 01536 518513 Fax: 01536 523438
 Email: sales@prestigeparkandleisurehomes.com
 Visit our website: www.prestigeparkandleisurehomes.com

Prestige Contemporary 45' x 20' (13.72m x 6.09m)
 1Double 1Twin, En-Suite, WiW, Utility

Customers Signature; _____
 Date; _____

Date: _____
 Scale: Relative
 Drawn: _____
 Code: _____
 Dwg No: _____
 Serial No: _____

This home is designed in accordance with BS3632

Legend

△	Light Switch	+	Exterior Tap
○	Pull Card Switch	□	TV Point
▽	Batten Holder	⊠	Phone Point
⊙	Globe Light	⊞	HDMI Point
⊗	Exterior Light	⊞	Thermostat
⊙	Downlight	⊞	CO ₂ Alarm
⊞	Single Socket	⊞	Smoke Alarm
⊞	Double Socket	⊞	Radiator
⊞	Spur Socket	⊞	Consumer Unit
⊞	Switching Plate	⊞	Exterior Meter Box

Rev	Date	By	Description

Notes;
 • Timber Ogee Door Casings

This plan is a guide and should be used for illustrative purposes only