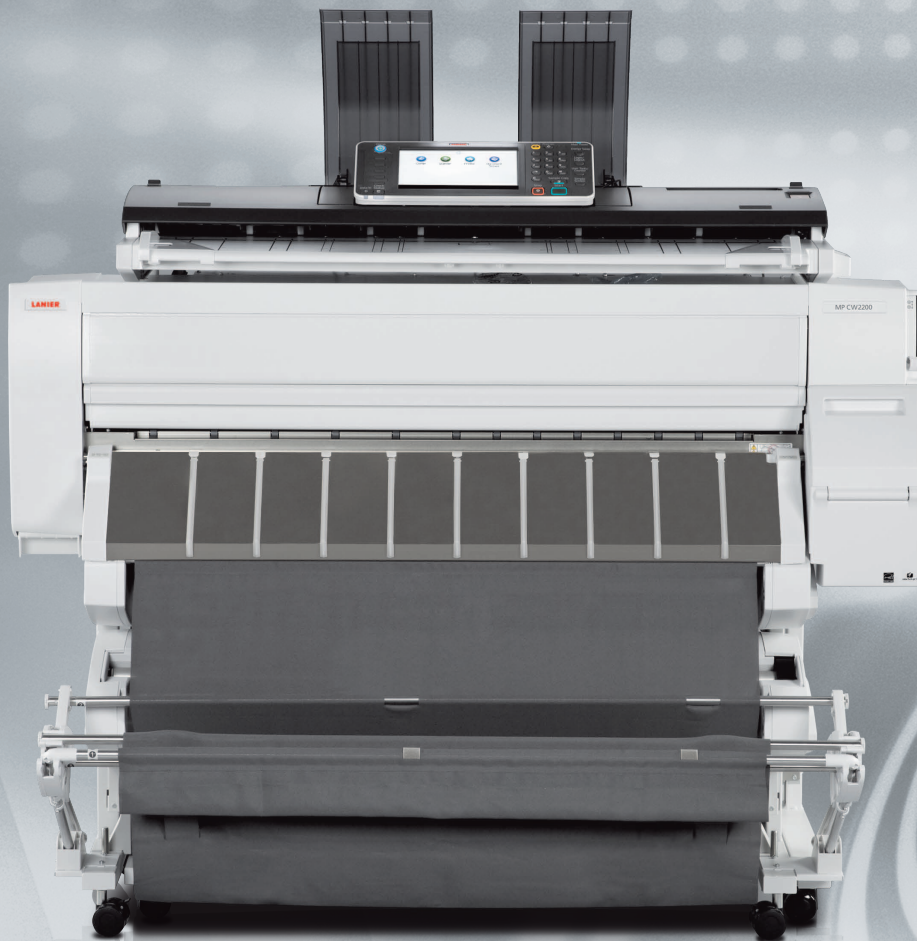


# LANIER

## MP CW2200

Wide Format Color Digital Imaging System

- ✓ Copier
- ✓ Printer
- ✓ Scanner



3.2 ppm monochrome

1.1 ppm full-color

## Add color to wide format workflows

The LANIER® MP CW2200 combines full-color output with exceptional versatility to meet a wider range of wide format workflow demands. The affordable full-color, low-volume digital imaging system offers print, copy and scan functionality to ensure essential large documents can be captured, saved and shared with incredible ease and simplicity. Present design plans, documents, schematics and more in brilliant colors — exactly the way they were designed.

## Versatile performance to do more

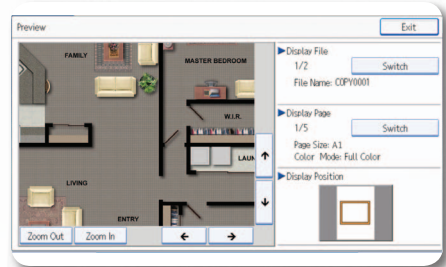
The Lanier MP CW2200 offers incredible multifunction performance, including copying, scanning and printing, to streamline low-volume, wide format workloads for CAD-centric organizations, such as architectural, construction and engineering firms. With full-color output, you can create compelling, professional-quality documents to put your work in the best light. Choose from multiple paper sizes and weights in order to meet every demand and manage every project with ease from the device or from the desktop.

## Intuitive functionality makes it easy

The Lanier MP CW2200 is designed to work the way you do. Take advantage of embedded SDK architecture to integrate highly productive Lanier applications such as GlobalScan NX as well as the 4.3" tiltable operator panel to configure workflows and to set up easy, one-touch shortcuts for frequently used tasks and personal preferences. A simplified display and step-by-step animated guide ensure easy operation for every user. Users can also replace proprietary ink cartridges in moments without swapping print heads for longer-lasting performance and less waste.

## Advanced scanning streamlines operations

With the Lanier MP CW2200 digital imaging system, you can share high-quality color or black-and-white electronic documents quickly and easily at no additional cost. The Lanier MP CW2200 lets you scan full-color originals and distribute them via Scan-to-Email/Folder/FTP/HDD. Take advantage of Scan-to-URL to give users in the field immediate access via any Web browser. Save files directly to a USB or SD card for mobile convenience. In addition, full-color thumbnail views allow users to review documents for accuracy and clarity before delivery.





# Full-featured capabilities in full color

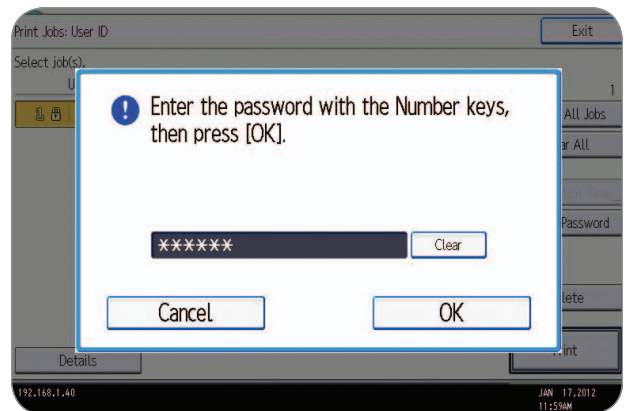
## Outstanding paper feeding

Take advantage of uninterrupted workflow and improve your productivity. The Lanier MP CW2200 includes multiple paper feeds to ensure users have the right kind of paper to handle every project with consistent speed and efficiency. With optional two-roll printing, the system can accommodate various-sized paper rolls and change them automatically. Users can print on the appropriately sized paper to reduce paper waste without having to walk to the device and spend critical time changing paper manually.



## Powerful security

Protect confidential and proprietary documents with a host of advanced security features. With user authentication, print jobs are stored and released only when the authorized user swipes an ID card or enters a password at the device. PDF encryption helps protect the integrity of scanned, password-protected PDFs during distribution. The device includes the DataOverwriteSecurity System (DOSS) feature to automatically overwrite latent images and data on the HDD. Administrators can even restrict access to specific functions for each individual user.



## External media convenience

The Lanier MP CW2200 is designed to enhance efficiency for every user — especially for those on the go. With the built-in USB and SD card slots, users can Scan-To or generate prints directly at the device using a USB memory or SD card for optimal on-the-go flexibility. It also supports an optional keyboard unit for users who prefer traditional keyboard input to a touch screen. In addition, users can even print from most manufacturers' mobile devices to ensure they have important documents at the most critical times.



# Lanier MP CW2200

## SYSTEM SPECIFICATIONS

### General Specifications

|                       |  |
|-----------------------|--|
| Configuration         | Console  |
| Scanning Element      | CIS Color Scanner (Moving original)  |
| Printing Process      | On demand Piezo inkjet system  |
| Ink Type              | Pigment-based ink (All 4 colors)   |
| System Memory         | 3GB  |
| HDD                   | 250GB  |
| Warm-up Time          | Less than 40sec  |
| First Copy Time       | A0 SEF: (B/W) Speed Priority Mode: 51sec/ Standard Mode: 71sec   |
| (from Standby mode)   | (Color) Speed Priority Mode: 155sec/ Standard Mode: 244sec   |
|                       | A1 LEF: (B/W) Speed Priority Mode: 29sec/ Standard Mode: 41sec   |
|                       | (Color) Speed Priority Mode: 84sec/ Standard Mode: 131sec  |
| Copy Resolution       | 600dpi   |
| Original Feed         | Sheet  |
| Original Set Position | Center   |
| Original Scan Size    | Maximum: 36" x 590" (914mm x 15,000mm)   |
|                       | Minimum: 8.5" x 8.5" (210mm x 210mm)   |
| Original Paper Weight | Paper Feed Guarantee: 0.035 – 1.0mm Image Quality Guarantee: 0.090 – 0.2mm (64 – 190g/m)   |
|                       | Feed to Carrier Sheet: 0.070mm and less  |
| Original Paper Width  | Inches: 8.5" / 9" / 11" / 12" / 17" / 18" / 22" / 24" / 30" / 34" / 36"  |
|                       | Metric (mm): 210 / 257 / 297 / 364 / 420 / 440 / 490 / 515 / 594 / 610 / 620 / 625 / 660 / 680 / 707 / 728 / 800 / 841 / 880 / 914.4 |
| Output Paper Size     | Inches: Maximum Roll Feeder – Width: 36", Length: 590"   |
|                       | Maximum Bypass – Width 36", Length: 78.7"  |
|                       | Minimum – Width 11", Length: 8.27"   |
|                       | Metric: Maximum Roll Feeder – Width: 914.4mm, Length: 15,000mm   |
|                       | Maximum Bypass – Width 914.4mm, Length: 2,000mm  |
|                       | Minimum – Width 279.4mm, Length: 210mm   |
| Output Paper Weight   | Roll Paper: 0.068-0.2mm (51 – 190g/m)  |
|                       | Cut Sheet: 0.068-0.4mm (51 – 220g/m)   |
| Roll Paper Width      | Inches: 11" / 12" / 15" / 17" / 18" / 22" / 24" / 30" / 34" / 36"  |
|                       | Metric (mm): 297 / 364 / 420 / 440 / 490 / 515 / 594 / 610 / 620 / 625 / 660 / 680 / 707 / 728 / 800 / 841 / 880 / 914.4             |
| Paper Type            | Plain Paper, Recycle Paper, Inkjet Plain Paper, Tracing Paper, Matte Film, Coated Paper, Coated Paper (CAD), Special Paper           |
| Copy Speed (CPM)      | A0 SEF: (B/W) Speed Priority Mode: 1.8cpm/Standard Mode: 1.1cpm  |
|                       | (Color) Speed Priority Mode: 0.6cpm/ Standard Mode: 0.3cpm   |
|                       | A1 LEF: (B/W) Speed Priority Mode: 3.4cpm/Standard Mode: 2.0cpm  |
|                       | (Color) Speed Priority Mode: 1.1cpm/ Standard Mode: 0.6cpm   |
| Reproduction Ratio    | Metric: 25%, 35.4%, 50%, 70.7%, 141.4%, 200%, 282.8%, 400%   |
|                       | Engineer (inch): 25%, 32.4%, 50%, 64.7%, 129.4%, 200%, 258.8%, 400%  |
|                       | Architecture: 25%, 33.3%, 50%, 66.7%, 133.3%, 200%, 266.7%, 400%   |

|                        |   |
|------------------------|---|
| Zoom                   | 25% – 400% by 0.1% Step   |
| Multiple Copying       | 1 to 99   |
| Paper Feeding Capacity | 1st Roll and Optional 2nd Roll: One Roll Paper each, Width: 8.5" – 36" (279.4mm – 914mm), Max. length: 150,000mm, Max diameter: 176mm |
|                        | Bypass: One sheet   |
| Paper Output Capacity  | 10 Sheets (Plain Paper)*  |
|                        | *2" core roll cannot stack because the curvature factor is too small.   |
| Paper Cut Method       | Preset size cut/Synchronized cut/ Variable cut  |
| Power Source           | NA: 120 – 127V 60Hz, 3.6A; Latin America: 220 – 240V 50 – 60Hz, 1.9A  |
| Max Power Consumption  | Less than 180W  |
| Dimensions (WxDxH)     | 55.1" x 22.1" x 50.3" (1,400 x 560 x 1,280mm)   |
| Weight                 | Less than 265 lbs (120 kg)  |

### Printer Specifications

|                              |  |
|------------------------------|--|
| Controller Board             | Embedded (GW Controller)   |
| CPU                          | Celeron-M 1.0GHz   |
| RAM                          | 3GB  |
| HDD                          | 250GB  |
| Print Speed                  | A0 SEF: (B/W) – 1.8ppm (Speed Priority Mode)   |
|                              | (Color) – 0.6ppm (Speed Priority Mode)   |
|                              | A1 LEF: (B/W) – 3.2ppm (Speed Priority Mode)   |
|                              | (Color) – 1.1ppm (Speed Priority Mode)   |
| Print Drivers                | Adobe PostScript3, HDI   |
| Supported Print Language     | PostScript3, HP-GL, HP-GL2   |
| Print Resolution             | Speed Priority Mode: 600dpi x 300dpi   |
|                              | Standard Mode: 600dpi x 600dpi   |
|                              | Quality Priority Mode: 600dpi x 600dpi   |
|                              | Quality Priority Mode for Coated Paper, Film (Matted) and Special Paper: 1200dpi x 1200dpi |
|                              | European 136 fonts (PS3)   |
| Font                         | Yes, Save Ratio 50% (PS Driver)  |
| Ink Save Mode                | Standard: Ethernet 100BASE-TX/ 10BASE-T, USB2.0  |
| Interface                    | Optional: Wireless LAN (IEEE802.11a/b/g), Gigabit Ethernet (1000BASE-T)                    |
| Network Protocol             | TCP/IP (IP v4, IP v6), IPX/SPX   |
| Standard MIB                 | MIB-II (RFC1213), Host Resource (RFC1514), Printer MIB (RFC1759)                           |
| Private MIB                  | Lanier Original  |
| Network/Operating System     | Windows: XP/Vista/Server2003/ Server2008/Server2008R2/7                                    |
|                              | Mac: OS 10.2 – 10.6 or later   |
|                              | Citrix Presentation Server 4.5 (32bit/64bit)   |
|                              | Citrix XenApp5.0 (32bit/64bit)   |
|                              | Citrix XenApp6.0 (64bit)   |
| Supported CAD version        | AutoCAD 2004/2005/2006/2007/2008/ 2009/2010/2011/2012                                      |
| (HDI Driver)                 | Yes  |
| One Direction                | Yes  |
| Media to Print               | Yes (JPEG/TIFF/PDF)  |
| (Print from USB/SD)          |  |
| Unauthorized Copy Prevention | Yes (PS driver)  |
| WSD Printer                  | Yes  |
| Color Matching               | Yes  |
| POP                          | Yes  |
| CUD                          | Yes  |

### Scanner Specifications

|                     |   |
|---------------------|---|
| Color Scan          | Standard  |
| Scan to Multimedia  | Standard  |
| Media to Print      | Standard  |
| Scanning Speed      | B/W: 600dpi: 3.14ips, 80mm/s  |
|                     | Color: 600dpi: 1.05ips, 26.7mm/s  |
|                     | Standard: 100 / 200 / 300 / 400 / 600 dpi                               |
| Scanning Resolution | Default: 200 dpi  |
| Scan Detection      | Auto detect, Preset size, Custom size                                   |
| RGB Support         | Standard  |
| Network Interface   | Standard: Ethernet 100BASE-TX/ 10BASE-T, USB2.0, USB Host, SD card slot |
|                     | Optional: Gigabit Ethernet (1000BASE-T), Wireless LAN (IEEE802.11a/b/g) |
| Protocol            | Network: TCP/IP, Scan-to-E-mail: SMTP, Scan-to-Folder: SMB, FTP         |
| Compression Method  | B/W: TIFF (MH, MR, MMR), Grayscale Full Color: JPEG (5 levels)          |
| Scan Mode           | B/W: Text/Line Art (Default), Text, Text/ Photo, Grayscale              |
|                     | Full Color: Text/Photo, Photo   |
| Image Density       | Auto Density Selection effective only in B/W and Grayscale scan mode    |
|                     | Manual: 7 levels (Effective in B&W/ Grayscale and Full-Color scan mode) |
| Image Rotation      | Yes   |
| SADF/Batch Mode     | Yes   |
| Mixed Size Mode     | Yes   |

### External Options

|                         |   |
|-------------------------|---|
| <b>2nd Roll Unit</b>    |   |
| Roll Paper Size         | Maximum Width: 36" (914mm)                |
|                         | Minimum Width: 11" (279.4mm)              |
| Roll Paper Diameter     | 6.92" (176mm)                             |
| Dimensions (WxHxD)      | 43.6" x 15.7" x 17" (1,108 x 398 x 432mm) |
| Weight                  | 31.9 lb. (14.5 kg)                        |
| <b>Roll Holder Unit</b> |   |
| Dimensions (WxHxD)      | 41.3" x 6.3" x 6.3 (1,049 x 160 x 160mm)  |
| Weight                  | 3.3 lb. (1.5 kg)                          |

### Consumables\*

|                            |       |
|----------------------------|-------|
| <b>Starter (Included):</b> |       |
| Print Cartridge Black      | 60ML  |
| Print Cartridge Cyan       | 28ML  |
| Print Cartridge Magenta    | 28ML  |
| Print Cartridge Yellow     | 28ML  |
| <b>For Purchase:</b>       |       |
| Print Cartridge Black      | 200ML |
| Print Cartridge Cyan       | 100ML |
| Print Cartridge Magenta    | 100ML |
| Print Cartridge Yellow     | 100ML |

\*For maximum performance and yield, we recommend using genuine Lanier parts and supplies.

### Warranty

The Lanier MP CW2200 is under warranty against defects for a period of one year from the date of purchase. Consumables are under warranty for a period of 90 days from the date of purchase or until depleted, whichever comes first. Please refer to warranty documents shipped with the product for more details.

[www.lanier.com](http://www.lanier.com)

Lanier, 70 Valley Stream Parkway, Malvern, PA 19355, 1-855-5-LANIER

Lanier® and the Lanier Logo are registered trademarks of Ricoh Americas Corporation. All other trademarks are the property of their respective owners. ©2014 Ricoh Americas Corporation. All rights reserved. The content of this document, and the appearance, features and specifications of Lanier products and services are subject to change from time to time without notice. Products are shown with optional features. While care has been taken to ensure the accuracy of this information, Lanier makes no representation or warranties about the accuracy, completeness or adequacy of the information contained herein, and shall not be liable for any errors or omissions in these materials. Actual results will vary depending upon use of the products and services, and the conditions and factors affecting performance. The only warranties for Lanier products and services are as set forth in the express warranty statements accompanying them.

L3418-1

