

TODD

Offices

TODD ARCHITECTS + PLANNERS
TODDARCH.COM

Offices

Our reputation in office design was established with the completion of a number of award winning developments in the 1980's. These included both new-build and refurbishment projects, for corporate clients including KPMG and Mason Solicitors.

We have remained heavily involved in workplace design and as a result has developed an intrinsic awareness of the key components in successful bespoke and speculative approaches which include:

- Maximisation of lettable/usable space
- Designing to budgets that acknowledge anticipated rental levels
- Space planning and layout flexibility to permit a range of occupancy configurations and working patterns
- Design quality to lift developments from the mundane that pervades in the sector
- Creation of environments which respond to the changing ways in which people work

This understanding of important issues has extended in recent years to an acknowledgement of the growing importance of sustainability and energy conscious design.

Our multi award winning Public Record Office of Northern Ireland secured the highest BREEAM rating for any public building in the province and is regarded as a UK wide exemplar in low energy design.

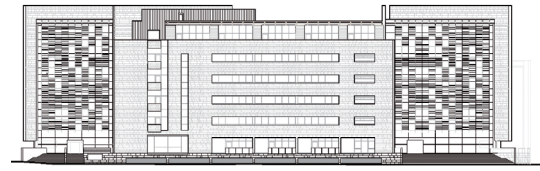
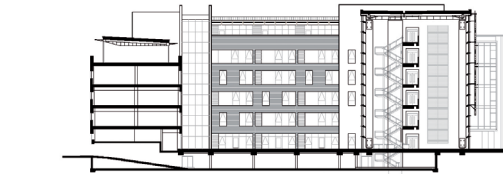
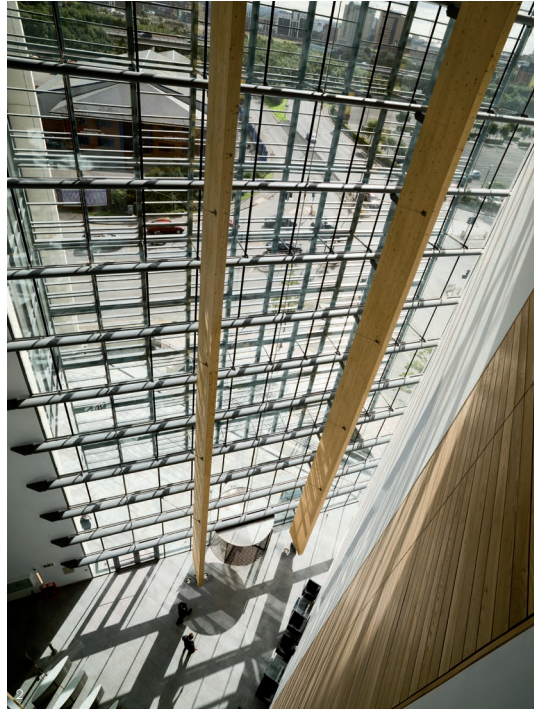
We have completed workplace fit-outs for a wide range of clients and end users including Pinsent Masons, A&L Goodbody, Liberty IT and Citi Group.

Office headquarters are a particular area of specialisation, where in addition to Invest Northern Ireland the practice has completed buildings for Horse Racing Ireland at the Curragh, Genesis Advertising, and the Law Society of Northern Ireland and Provident Financial in Bradford.

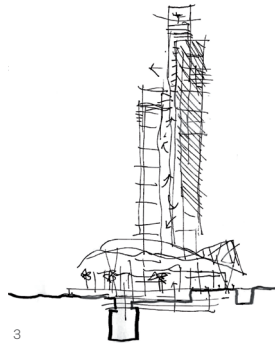
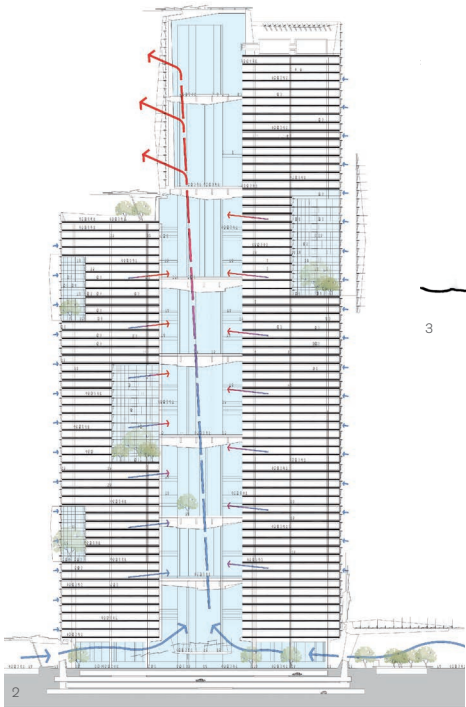


Offices
 (1) Clarendon Square, Belfast
 (2) Charney House, Chester Street, Belfast
 (3) Park One, Wiloughby Road, Blackhall
 (4) Office Development, Stokencurch

(5) Horse Racing Ireland Headquarters, County Kildare
 (6) City Square House, Leeds
 (7) Office Development, Adelaide Street, Belfast
 (8) Financial Services Centre, Titanic Quarter, Belfast

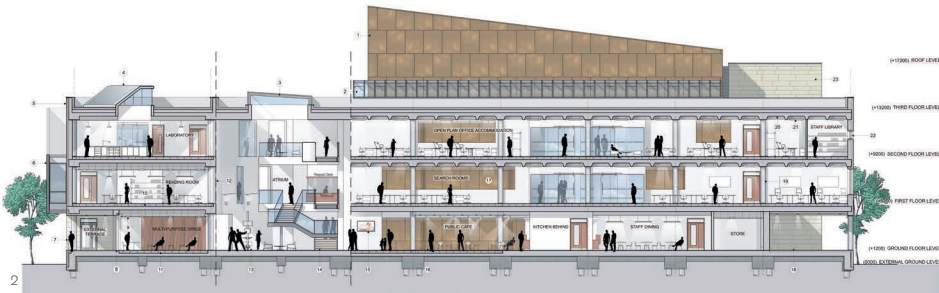


- Offices**
- (1) Gateway Offices, Titanic Quarter, Belfast, facade detail
 - (2) Gateway Offices, Titanic Quarter, Belfast, entrance atrium
 - (3) Gateway Offices, Titanic Quarter, Belfast, main entrance
 - (4) Gateway Offices, Titanic Quarter, Belfast, landscaped courtyard
 - (5) Gateway Offices, Titanic Quarter, Belfast, cross section and elevation



- Offices**
- (1) Invest Northern Ireland Headquarters, Bedford Street, Belfast
 - (2) Eco Tower Proposal, Saudi Arabia, section
 - (3) Eco Tower Proposal, Saudi Arabia, concept
 - (4) Provident Financial Headquarters, Bradford

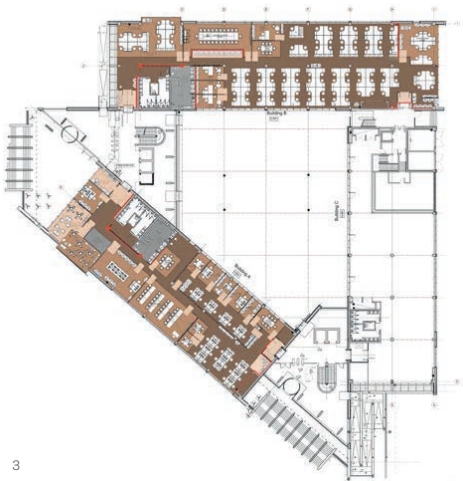
- (5) Donegall House, Donegall Square, Belfast
- (6) G5 Gateway Office Development, Belfast
- (7) Law Society House, Belfast
- (8) Bedford Square, Belfast



- Offices**
- (1) Public Record Office of Northern Ireland, central atrium
 - (2) Public Record Office of Northern Ireland, cross section
 - (3) Public Record Office of Northern Ireland, atrium detail
 - (4) Public Record Office of Northern Ireland, facade detail
 - (5) Public Record Office of Northern Ireland, integrated artwork



1



3



Offices
 (1) Present Masons Headquarters, Belfast, workplace studies
 (2) Present Masons Headquarters, Belfast, client reception
 (3) Client Group Office Layouts, Titanic Quarter, Belfast

(4) Liberty IT Offices - Dublin
 (5) Council Chamber, Cragavon

