

SI 1822

CENTRIFUGAL PUMP



Large tank pump

The SI 1822 pump is designed to evacuate heavy and contaminated condensates.

Capable of evacuating up to 380 l/h, the SI 1822 pump is suitable for air conditioning units and industrial refrigeration displays. Strong, the SI 1822 tolerates charged, high temperature and acidic condensates ($\text{pH} > 3.4$) produced by gas condensing boilers

BENEFITS

- **High performance**

- Reduces operating cycle number thanks to integrated large tank of 3,8 liters. (1 gal)
- Can discharge condensates **up to 5.8 m**.
- **Up to 380 l/h**.

- **High resistance**

- Suitable for mild acid and hot condensate. ($\text{pH} \geq 3.4$ et $T \leq 65^\circ\text{C}$)
- Thermal protection at 105°C . (**auto-reset**)

- **Safety**

- Normally closed alarm contact.

KIT CONTENTS



- One-piece centrifugal pump with tank (3.8L)
- Integrated barb end check valve $\varnothing_{\text{ext.}} 10 \text{ mm}$ (3/8")

APPLICATIONS

- Column air conditioning units • Multi cassettes
- Gas condensing boilers • High efficiency gas furnace
- Refrigerating display cabinets • Evaporators • Ducted units



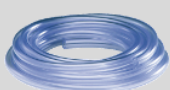
TECHNICAL SPECIFICATION

Max. flow rate	380 l/h
Max. discharge head	5.8 m
Max pressure	6.2 m (flowrate =0)
Sound level in application at 1m(3.3ft): ≤ 47 dBA (Measured in Sauermann acoustic lab, pump operating with water)	
Mains supply	230V~ 50Hz - 90 W
Detection levels	On : 75mm, Off : 20mm Safety : 90mm
Safety switch	NC 4 A résistive – 250V
Max. condensate temperature	65°C, 80°C in short peak
Max. condensate acidity	pH > 3.4 (Gas condensing boilers)
Thermal protection (overheating)	105°C (auto-reset)
Operating conditions	100% - Continuous duty
Protection	IP20
Safety standards	CE and EAC
RoHS directive	Compliant
WEEE directive	Compliant
Pump dimensions	L305 x l 152 x H 235 mm
Weight (including box)	3.0 kg
Packaging	4 pcs

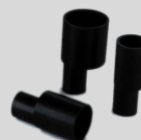
ACTUAL FLOW RATES (l/h)

Vertical Discharge head	Total tube length (Ø int. 10 mm, 3/8")			
	5 m	10 m	20 m	30 m
1 m	330	260	220	190
2 m	275	220	190	160
3 m	220	175	155	135
4 m	160	130	120	100
5 m	100	80	70	60
6 m	0	15	10	10

RECOMMENDED ACCESSORIES



Hose Ø int. 10mm (3/8")
ACC 00125 : 25 m
ACC 00126 : Braided, 25 m



Adaptators
Ø int. 24/25 mm: ACC 00225
Ø int. 32 mm: ACC 00230
Ø int. 40 mm: ACC 00240



Install kit
Adaptators
Ø int. 24/25 mm: 1 x ACC 00225
Ø int. 32 mm: 1 x ACC 00230
Ø int. 40 mm: 1 x ACC 00240
ACC 00110



Float detector
Used to operate an additional safety or switch on the pump.
ACC 00601