

THE  
**LILA**  
COLLECTION



**Lila Delman**

SUMMER 2018



FROM THE COAST  
TO THE CAPITAL...



**Lila Delman**  
EST. 1964

#1

IN RHODE ISLAND  
LUXURY REAL ESTATE\*

**\$494M**

TOTAL SALES VOLUME IN 2017\*

**\$4.5B**

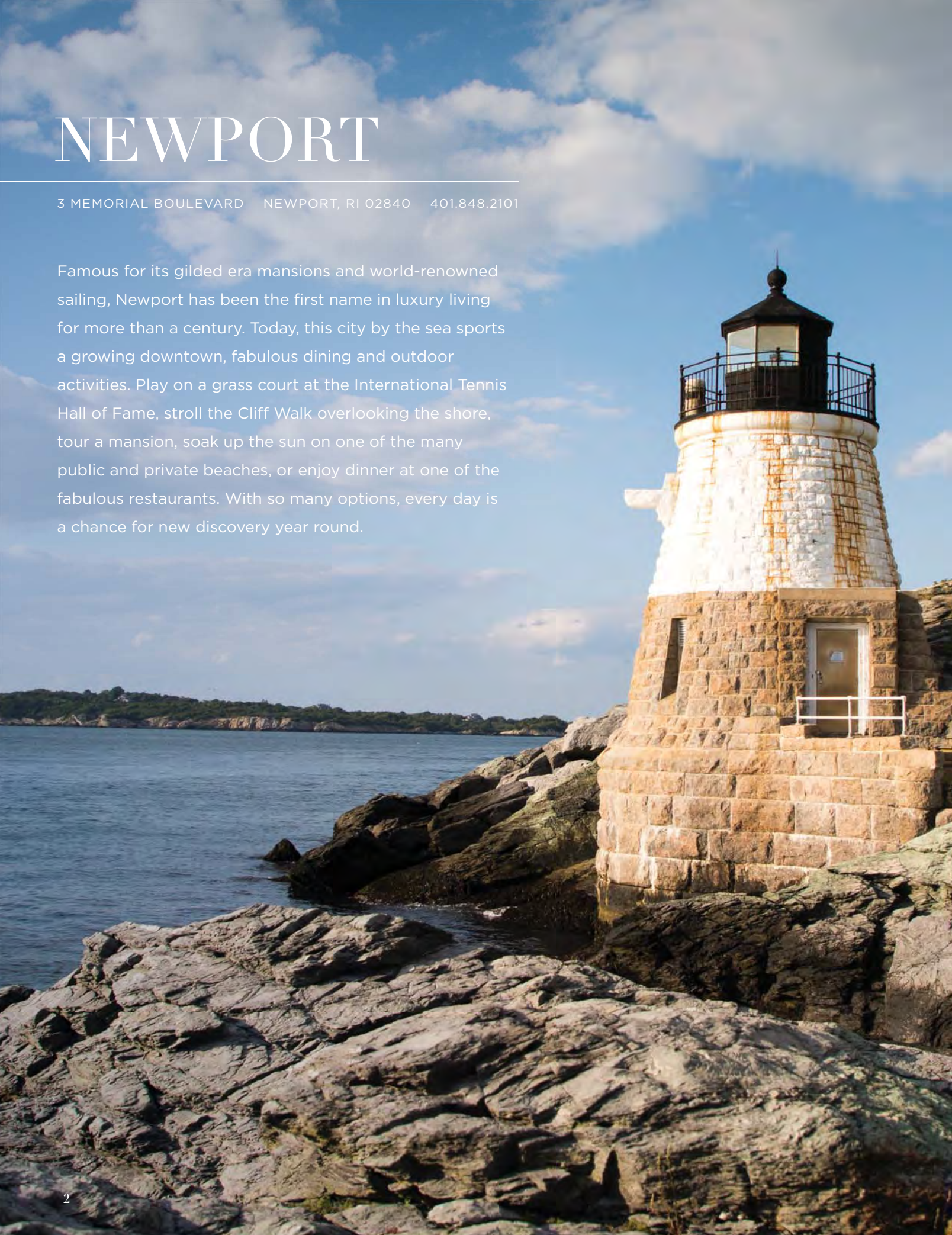
TOTAL SALES VOLUME  
OVER THE PAST 25 YEARS\*

\*This representation is based on information from the Rhode Island State Wide MLS for the period of May 01, 1993 - May 15, 2018. The MLS does not guarantee and is not in any way responsible for its accuracy. Data maintained by the MLS may not reflect all real estate activity in the market.

# NEWPORT

3 MEMORIAL BOULEVARD NEWPORT, RI 02840 401.848.2101

Famous for its gilded era mansions and world-renowned sailing, Newport has been the first name in luxury living for more than a century. Today, this city by the sea sports a growing downtown, fabulous dining and outdoor activities. Play on a grass court at the International Tennis Hall of Fame, stroll the Cliff Walk overlooking the shore, tour a mansion, soak up the sun on one of the many public and private beaches, or enjoy dinner at one of the fabulous restaurants. With so many options, every day is a chance for new discovery year round.



## PLAISANCE

\$14,500,000 | Web ID: 1191424

### NEWPORT, RHODE ISLAND

“Plaisance” overlooking the Atlantic Ocean, is a magnificent one-of-a-kind waterfront estate situated at Newport’s southern end featuring a private beach and glorious sunsets. The spectacular views reaching from Newport’s iconic coastline to Block Island and the Atlantic Ocean are enjoyed from nearly every room.



## 333 POPPASQUASH

\$5,750,000 | Web ID: 1172163

### BRISTOL, RHODE ISLAND

Waterfront English-inspired sportsman's estate on 12 idyllic acres with gated entrance on exclusive Poppasquash Road. Impeccably restored home features 10 bedrooms, wine cellar, moorings, salt pool, tennis court, and 4-stall barn. Additional acreage available.



## KER ARVOR

\$9,500,000 | Web ID: 1189352

### NEWPORT, RHODE ISLAND

Steeped in history, "Ker Arvor" - French Breton for "seaside" - is an exceptional, pristine estate located on 9.1 acres off Ocean Drive near the desirable Newport Country Club. Built between 1931 and 1933 by the renowned New York firm Clinton & Russell, the property is listed on the National Register of Historic Places Inventory.



## VILLA AL MARE

\$4,500,000 | Web ID: 1154375

### NEWPORT, RHODE ISLAND

"Villa al Mare" sits on a pristine lot of over 3 acres with a swimming pool and terraces. A gated entry allows entry through an attractive stucco wall, providing both privacy and security. Abundant space allows for play, entertaining, or enjoying your own park-like grounds. This contemporary villa has separate guest quarters.



## SEAGLASS

\$3,795,000 | Web ID: 1176018

### NEWPORT, RHODE ISLAND

Spectacular ocean views and sensational location! A gated private entry welcomes you to this seaside cottage, "Seaglass," located on the southeastern point of Bellevue Avenue overlooking Newport's rocky coastline and scenic Cliff Walk with crashing surf on one side and magnificent mansions on the other.



## OLD ACRE

### NEWPORT, RHODE ISLAND

\$2,100,000 | Web ID: 1190768



## MINTWATER COTTAGE

### PORTSMOUTH, RHODE ISLAND

\$1,495,000 | Web ID: 1175352



## SUNNYSIDE

\$3,750,000 | Web ID: 1154305

### NEWPORT, RHODE ISLAND

"Commodore William Edgar House" c. 1885, a traditional Georgian Wrenian Colonial Revival designed for a founding member of NYCC by esteemed architectural firm McKim, Mead & White. Sited beautifully on one acre with an 18' x 36' salt water pool and several specimen trees.



## 156 FISCHER CIRCLE

### PORTSMOUTH, RHODE ISLAND

\$2,500,000 | Web ID: 1156970



## TOWER AT CARNEGIE ABBEY

### PORTSMOUTH, RHODE ISLAND

Starting at \$699,000 | Web ID: 1185689

# NARRAGANSETT

41 OCEAN ROAD NARRAGANSETT, RI 02882 401.789.6666

With some of the best public and private beaches in Rhode Island, Narragansett is both a year-round beach community and a favorite destination for summer tourists. One of the original sea-side retreats of New England, 1800s Narragansett was a casino-filled playground for Rhode Island's rich and famous. Today, Narragansett has the best of both worlds, offering world-class beach living, surfing, and fishing, with a laid-back attitude.



## STONE LEA

\$6,495,000 | Web ID: 1170666

### NARRAGANSETT, RHODE ISLAND

This majestic Victorian designed by the noted architectural firm of McKim, Mead & White is perched on a 2.5 acre oceanfront lot with panoramic views of the granite coastline and the open ocean. A beautiful combination of granite and shingle, this was one of the first homes in Narragansett to be listed on the National Register of Historic Places.

Collection@LilaDelman.com | 401.789.6666



## 125 KENYON FARM

NARRAGANSETT, RHODE ISLAND

\$4,350,000 | Web ID: 1186876

## 144 GIBSON

NARRAGANSETT, RHODE ISLAND

\$1,775,000 | Web ID: 1184022



## 72 CORMORANT

NARRAGANSETT, RHODE ISLAND

Enjoy sweeping ocean views from this 4,532 sq. ft. home sited on 2 acres in a bucolic and private compound. Featuring a gourmet kitchen, 4 ensuite bedrooms, climate-controlled wine storage, geothermal heat, oceanside second floor balcony and an expansive bluestone patio.

\$3,499,000 | Web ID: 1186313



## 290 FLETCHER

QUIDNESSETT, RHODE ISLAND

\$1,490,000 | Web ID: 1190800



## THE POINTE BEACH HOUSES

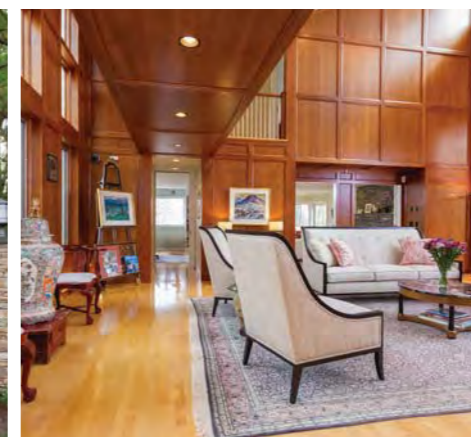
SOUTH KINGSTOWN, RHODE ISLAND

Starting at \$949,000 | Web ID: 1187629

# PROVIDENCE

369 SOUTH MAIN STREET PROVIDENCE, RI 02903 401.274.1644

Rhode Island's capital, affectionately called the Renaissance City, is in the midst of a fresh revitalization with new restaurants, bars, and businesses opening across town, while maintaining its rich, intellectual culture. The largest city in the Ocean State, and the wealthiest state capital at the turn of the 20th century, Providence is home to unique architecture ranging from the colonial era to the 21st century, as well as many colleges and universities like RISD, Brown University, Johnson & Wales, and Providence College. With fabulous restaurants, new downtown development, and an unending supply of things to do, this walkable, bustling city is on the rise — and is the perfect distance between New York and Boston.



## 145 GROTTO

\$1,495,000 | Web ID: 1186235

### EAST SIDE OF PROVIDENCE, RHODE ISLAND

This gated, dramatic contemporary is located on a secluded 1/2 acre lot overlooking the Seekonk River. Step inside this unique home, featuring a two-story mahogany clad great room with a stone facade wood-burning fireplace and second story catwalk.

Collection@LilaDelman.com | 401.274.1644





## 222 CHANNEL VIEW

\$1,795,000 | Web ID: 1187089

**WARWICK NECK, RHODE ISLAND**

This majestic home in Anglesea enjoys a privileged location with 150 feet of ocean frontage. The residence is spread over 4,700 sq ft showcasing panoramic views on all 3 impeccable levels.



## 74 PATERSON

**EAST SIDE OF PROVIDENCE, RHODE ISLAND**

\$989,000 | Web ID: 1187996



## 286 HUNTINGHOUSE

**GLOCESTER, RHODE ISLAND**

\$649,000 | Web ID: 1188404



## 8 ALYSSA

\$1,299,000 | Web ID: 1186349

**LINCOLN, RHODE ISLAND**

Inspired brick colonial with elegant double staircase, inlaid marble cove ceilings, custom cabinetry and top-line appliances. This property features a stunning master suite with spa bath and balcony overlooking patio, pool and guest house.



## 1096 PUTNAM PIKE

**GLOCESTER, RHODE ISLAND**

\$599,900 | Web ID: 1188781



## 79 BOYCE

**BARRINGTON, RHODE ISLAND**

\$729,000 | Web ID: 1190917

# LILA'S GUIDE TO SUMMER



Block Island  
Race Week  
JUNE 17 - 22  
Block Island, RI

newportFILM  
JUNE 21 - SEPTEMBER 6  
EVERY THURSDAY  
Locations Across  
Aquidneck Island

IYRS Gala  
JULY 7  
Newport, RI

Dell Technologies  
Hall of Fame Open  
JULY 15 - 22  
International Tennis Hall  
of Fame, Newport, RI

Blessing of  
the Fleet  
JULY 28  
SATURDAY, 12:00pm  
Narragansett, RI

International  
Boat Show  
SEPTEMBER 13 - 16  
Newport, RI

# WATCH HILL

52 BAY STREET WATCH HILL, RI 02891 401.348.1999



Watch Hill is a classic coastal community with quintessential New England charm. Rivaling Newport as a luxury retreat since the 19th century, the area is known for its stately shingled homes, private atmosphere and exclusivity. Home to turn of the century military forts, the country's oldest operating carousel, and the five-star Ocean House hotel—the last of the Victorian waterfront hotels— Watch Hill continues to be a highly desirable destination for those who want all that New England can offer while being close to New York and Boston.



## OCEANWIDE

\$12,500,000 | Web ID: 1166277

### WEEKAPAUG, RHODE ISLAND

A rare offering in the exclusive seven-home coastal enclave of Weekapaug. This 5,000+ square foot shingle-style residence was built in 1919 and carries the charm reminiscent of the era. Stunning architectural details include expansive, floor-to-ceiling windows with sweeping views of the Atlantic Ocean and two grand fieldstone fireplaces.



## WINDSWEPT

\$7,700,000 | Web ID: 1184578

### WATCH HILL, RHODE ISLAND

Shingle-style waterfront estate sits directly on Little Narragansett Bay, at the mouth of Watch Hill, Rhode Island's quaint New England harbor. "Windswept" boasts rare, expansive Westerly views of the Bay, Napatree Point, Stonington CT, Fishers Island NY, and Long Island Sound.



## 54 WAWALOAM

\$5,995,000 | Web ID: 1189603

### WEEKAPAUG, RHODE ISLAND

Coastal elegance abounds with this seaside offering in the exclusive community of Weekapaug. Nestled within a coastal backdrop with an unbroken view of the sea and coastline, every detail in this home was artfully crafted with arched entries, custom designed built-ins and thoughtfulness throughout.



## 75 OCEAN VIEW

\$4,750,000 | Web ID: 1184724

### QUONOCHONTAUG, RHODE ISLAND

Perfection in Central Beach Quonochontaug. This stunning custom home in the seaside coastal community of Quonnie was built in 2012 and is sited on a .36 acre lot spanning from Ocean View Avenue to Surfside Avenue and conveys with a half acre private beachfront lot.



## 30 WILLIAMS

### WEEKAPAUG, RHODE ISLAND

\$2,900,000 | Web ID: 1185314



## 2 POWAGET

### QUONOCHONTAUG, RHODE ISLAND

\$2,750,000 | Web ID: 1180972



## 21 YOSEMITE VALLEY

\$2,900,000 | Web ID: 1185309

### WATCH HILL, RHODE ISLAND

Welcome home to the coastal enclave of Watch Hill. Stunning architectural details abound with this fabulous estate. Nestled in privacy on 1.75 acres of manicured grounds, this home will simply captivate you.



## 91 SOUTH ARNOLDA

### CHARLESTOWN, RHODE ISLAND

\$1,495,000 | Web ID: 1185313



## 45 SECOND

### MISQUAMICUT BEACH, RHODE ISLAND

\$1,150,000 | Web ID: 1190874

# JAMESTOWN

19 NARRAGANSETT AVENUE JAMESTOWN, RI 02835 401.423.3440

Nestled between Narragansett and Newport, Jamestown offers the perfect balance between the two with a relaxed seaside experience that can't be beat. With amazing public schools, world-class sailing and the best scuba diving in New England, Jamestown is Rhode Island's hidden gem. Enjoy the best of quiet country living while exploring the surrounding historic forts, preserved farmland, and bustling docks— all just a ferry ride from Downtown Newport and a thirty minute drive from Providence.



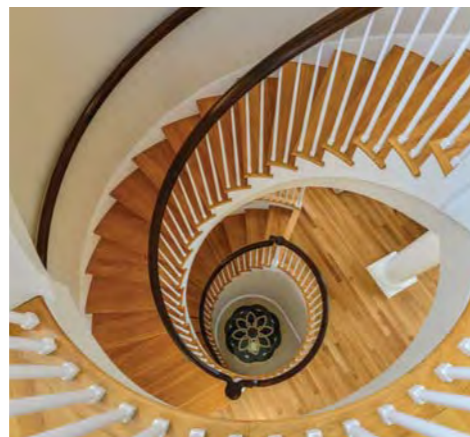
## FOLLY HOUSE

\$4,275,000 | Web ID: 1173362

### JAMESTOWN, RHODE ISLAND

The "Folly House" is a classic period detailed shingle-style cottage with modern day amenities. Located on the water's edge of Jamestown Harbor, this home offers a wonderful wrap-around porch on the waterside providing spectacular views of Narragansett Bay, The Newport Bridge, and boats sailing by.

Collection@LilaDelman.com | 401.423.3440



## WEST VIEW

\$3,995,000 | Web ID: 1165800

### JAMESTOWN, RHODE ISLAND

This stunning waterfront shingle-style home is sited on 11+ private lush acres with an amazing 525 feet of beach frontage on the West Passage of Narragansett Bay. "West View" epitomizes classic, timeless style with its elegant custom details and beauty, yet remains casual, warm and welcoming while offering an open floor plan.



## CHANNEL BELLS

\$3,995,000 | Web ID: 1155358

### JAMESTOWN, RHODE ISLAND

Stunning views of both the Atlantic Ocean and Narragansett Bay make iconic "Channel Bells" a very rare find. Watch sailboats glide by, waves crashing on the rocks and evening firework displays from the wrap-around porch,



## 38 COLLINS

\$3,450,000 | Web ID: 1134991

### JAMESTOWN, RHODE ISLAND

Waterfront home with dazzling unobstructed Bay views from all rooms. Infamous Captain William Kidd often visited the farm this home is built on. Island legend has it that part of his treasure was entrusted to the original farm owner, Captain Thomas Paine.



## 212 FLEETWOOD

### NORTH KINGSTOWN, RHODE ISLAND

\$1,100,000 | Web ID: 1164803



## 6 MEADOW

### JAMESTOWN, RHODE ISLAND

\$1,799,999 | Web ID: 1184281



## 1046 EAST SHORE

\$2,399,000 | Web ID: 1184760

### JAMESTOWN, RHODE ISLAND

Wonderfully appointed and designed home sited along the shore of Narragansett Bay with a private deep water dock including a boat lift. Enjoy unobstructed views of the Bay and Prudence Island. Swim from the beach, or cast a line from the dock for your fishing pleasure.



## 45 POJAC POINT

### NORTH KINGSTOWN, RHODE ISLAND

\$1,399,000 | Web ID: 1165978



## 28 BAYBERRY

### JAMESTOWN, RHODE ISLAND

\$749,000 | Web ID: 1186165



# BLOCK ISLAND

61 DODGE STREET BLOCK ISLAND, RI 02807 401.466.8777

Take a step back in time to a small island with a small town feel. With no highways, no stoplights, no chain stores and no country clubs, Block Island is a year-round vacation community that is as relaxing as it is casual and friendly. Named one of the last great places in the western hemisphere by the Nature Conservancy, the island offers amazing beaches, beautiful cliff views, miles of walking trails and a historic downtown made up of local businesses. Whether you want to fish, surf, paint, write or even farm, this is the laid back place to do it in peace.



## ON THE BLUFF

\$3,900,000 | Web ID: 1169159

### BLOCK ISLAND, RHODE ISLAND

"On the Bluff" is a magnificent home that perches itself off Snake Hole Road and captures sweeping views of the Atlantic Ocean, Montauk and the Deep Water Windmills, the first windmill farm off of the coast of the United States. Located on the Southern bluff of the Island close to Vail Beach & Black Rock.

Collection@LilaDelman.com | 401.466.8777



## 912 COAST GUARD

\$3,095,000 | Web ID: 1152124

### BLOCK ISLAND, RHODE ISLAND

Extraordinary opportunity to own on coveted Coast Guard Road. Individually, one of Block Island's most picturesque locations; offering stunning views of the Great Salt Pond, New Harbor and the Atlantic Ocean.



## 1033 CORN NECK

\$6,900,000 | Web ID: 1064974

### BLOCK ISLAND, RHODE ISLAND

"When I first saw the property I thought the view was the most beautiful I had ever seen anywhere in the world" - Roy Rowan. Own a piece of Block Island and have it all to yourself. Enjoy the 180-degree seascape views from Montauk to Newport Bridge.



## 1413 DICKENS

\$1,725,000 | Web ID: 1159218

### BLOCK ISLAND, RHODE ISLAND

The absolute 'Block Island Hideaway' located in the secluded southwest point neighborhood. Sited at the end of the private lane, this picturesque New England Cape borders acres and acres of the renowned Lewis-Dickens Farm Nature Preserve. Offering dramatic ocean views and ultimate privacy.



Lila Delman  
EST. 1964

[Collection@LilaDelman.com](mailto:Collection@LilaDelman.com) | 855.789. *Lila* (5452)

NEWPORT    NARRAGANSETT    PROVIDENCE    JAMESTOWN    WATCH HILL    BLOCK ISLAND

CHRISTIE'S  
INTERNATIONAL REAL ESTATE

MAYFAIR  
International Realty

LUXURY PORTFOLIO  
INTERNATIONAL