

LMA FACTS



2013 DATA

LMA THEMES

- LMA is the Foundation of the MA Innovation Economy
- Growth has been Consistent with City and State Smart Growth Policies
- Funding for Transportation is essential for the future of the LMA and for the State

Foundation of the Massachusetts Innovation Economy

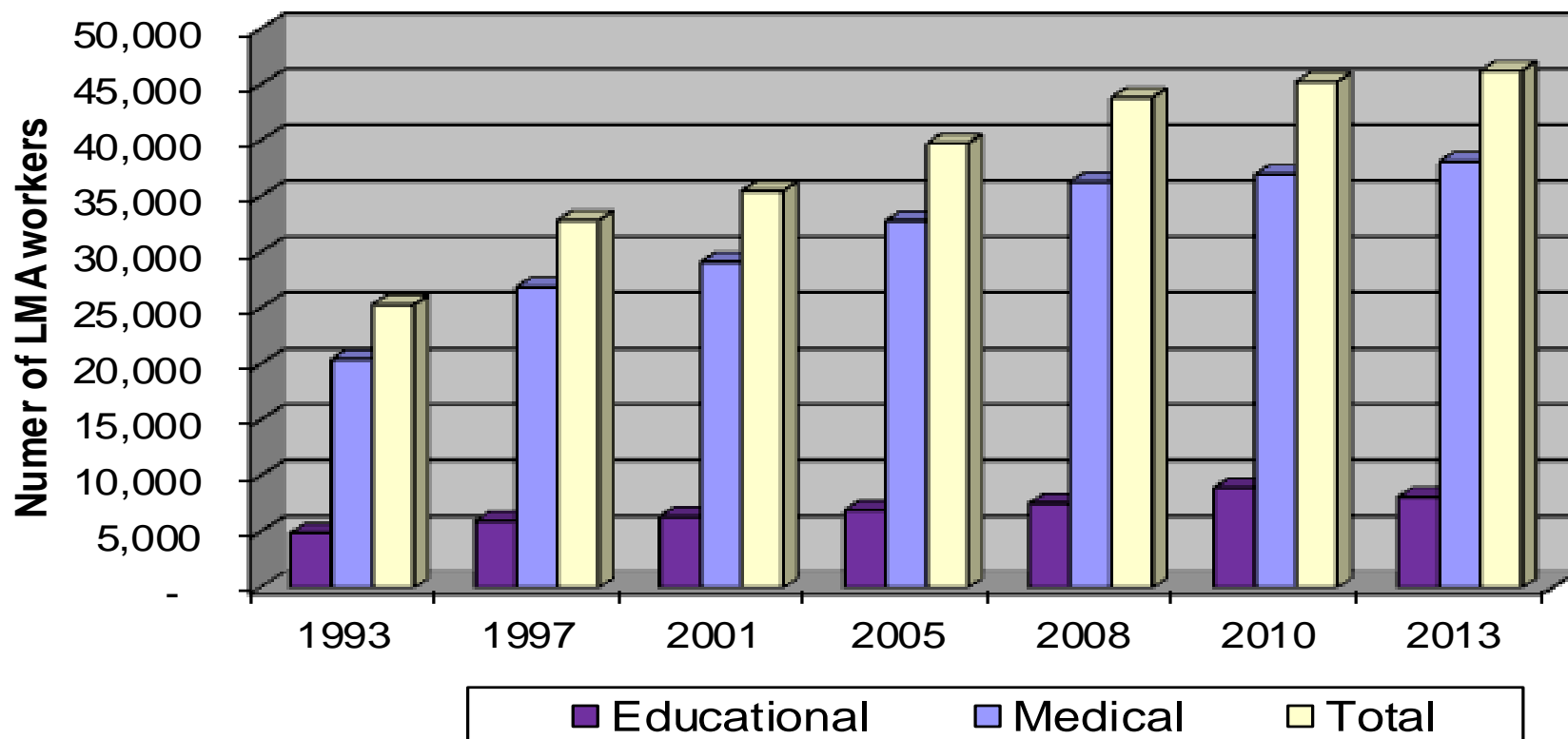
- Education and health care provide the largest number of jobs in the state
- LMA employees live in every political district

LMA GENERATES 800 NEW JOBS/YEAR

- 46,260 Employees
 - 31% Boston residents
 - 83% are medical employees
- Avg. 6,600 job openings annually
- Annual state income tax revenue \$133.7 million on \$2.5 billion payroll (up 12% since 2010)

LMA WORKFORCE REMAINS STABLE

Workforce



LMA IS A CENTER OF HEALTHCARE INNOVATION

- 95,440 annual inpatient admissions
- 2.5m annual outpatient visits
- Nearly half (1,853) of all of Boston's acute care hospital beds
- 44% of all outpatient visits and 46% of all inpatient admissions to Boston hospitals

LMA IS A MAGNET FOR RESEARCH

- The LMA research enterprise attracted \$1.02 billion in NIH funding (42% of MA total)
- If the LMA were a state it would rank 7th in the nation after NC, before TX
- Our researchers seek causes of both common and rare diseases (diabetes, cancer, cardiovascular, AIDs, sleep apnea, genetic disorders) and accelerate cures for the community

LMA IS A CENTER FOR SCHOLARSHIP

21,800 Students

- 18,500 Colleges of the Fenway Students
 - 64% of COF alumni/ae live in MA
 - 5% international
- 35% are graduate, MD, and PhD students

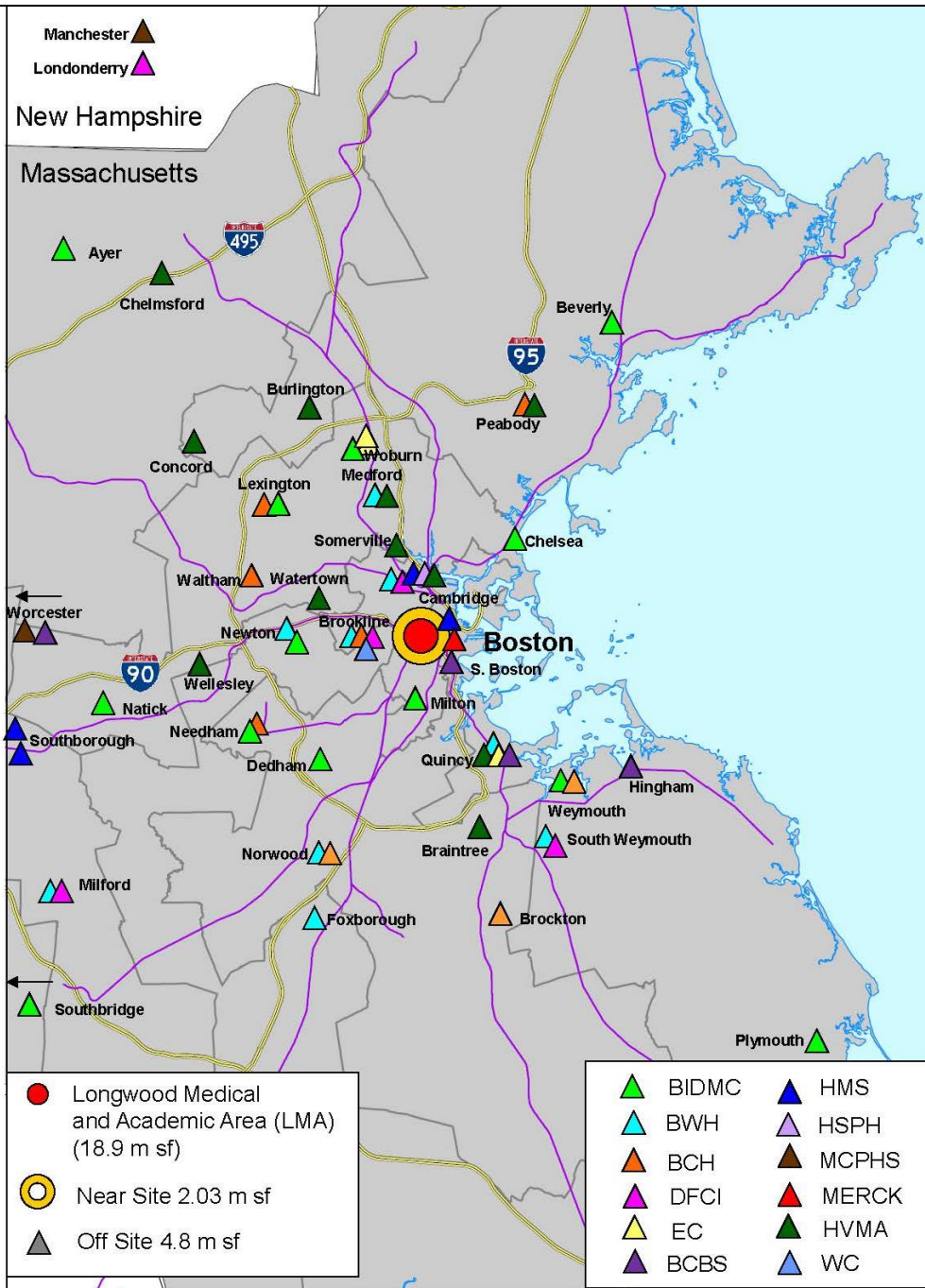
POPULATION

110,800 people coming to the LMA daily

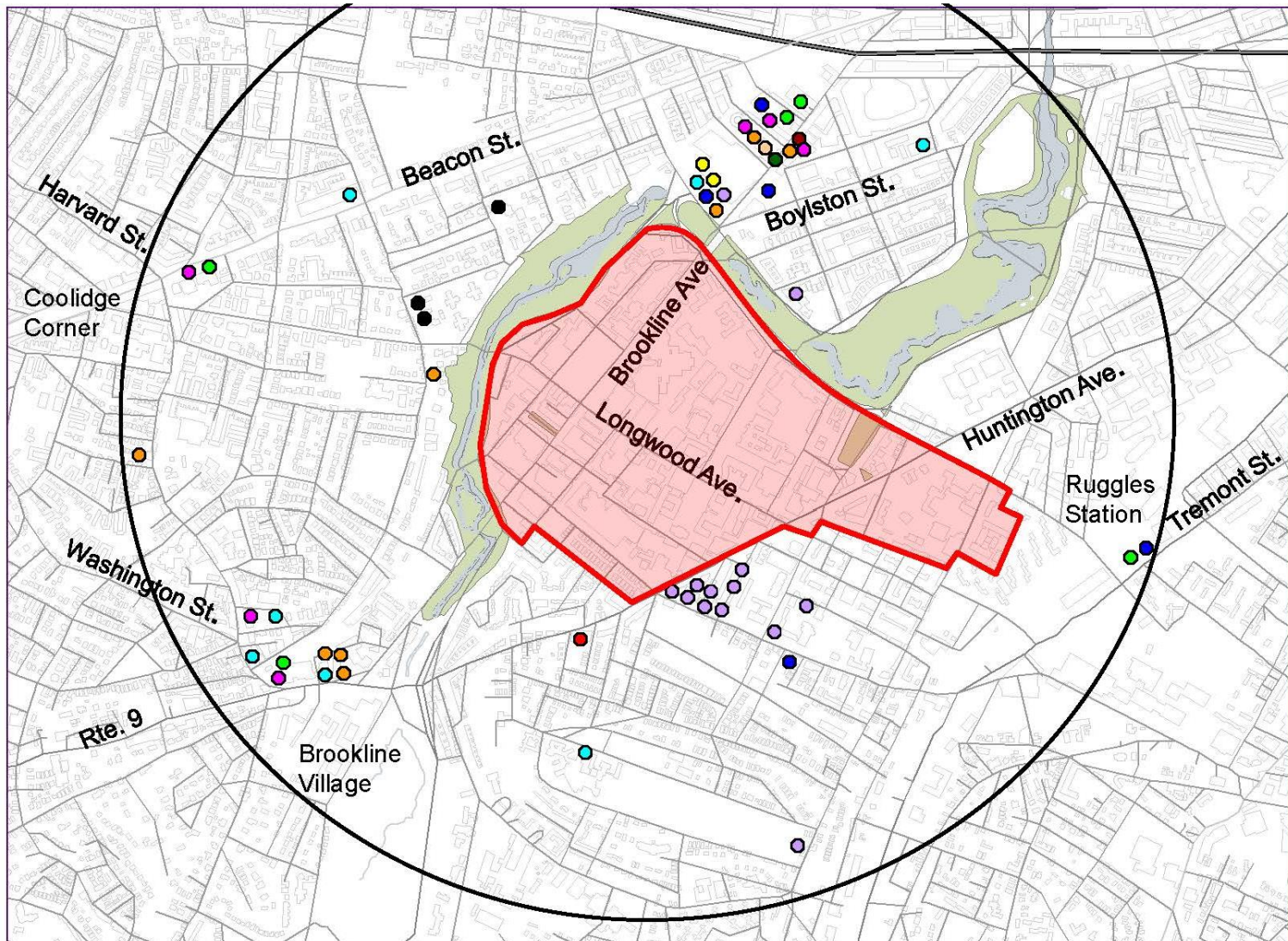
- In addition to 46,260 employees, 21,800 students, and 2.6 million in- and out-patients there are:
- 4 million visitors annually on average
- Others regularly in the LMA include contracted vendors, continuing ed. students, physician providers and researchers not on payroll, volunteers, etc.

**LMA Growth has been
Consistent with City and State
Smart Growth Policies**

LMA Makes Positive Contributions to the Region



NON-CLINICAL SPACE NEAR THE LMA



There are over 2m sf of member space within a one mile radius of the LMA

○ One mile radius

STRENGTH OF LMA ECONOMY CONTINUES TO DRAW BOSTON RESIDENTS

Nearly 14,000 (31%) LMA employees live in Boston

Top Neighborhoods:

- Walk to Work: Fenway/Kenmore #1 neighborhood with 13% of LMA's Boston employee residents
- Dorchester and Jamaica Plain (nearly 13%)
- Mission Hill and Roxbury (11%)

LMA GROWTH IS CONSISTENT WITH POLICIES

- Housing students in 2,295 new beds on college campuses since 2001
- Development of the largest cluster of LEED Buildings (20) in Boston
- Reduce traffic congestion, concentrate tertiary care and research, locate ancillary space near-site

THE LMA HAS GROWN SUSTAINABLY (2015)

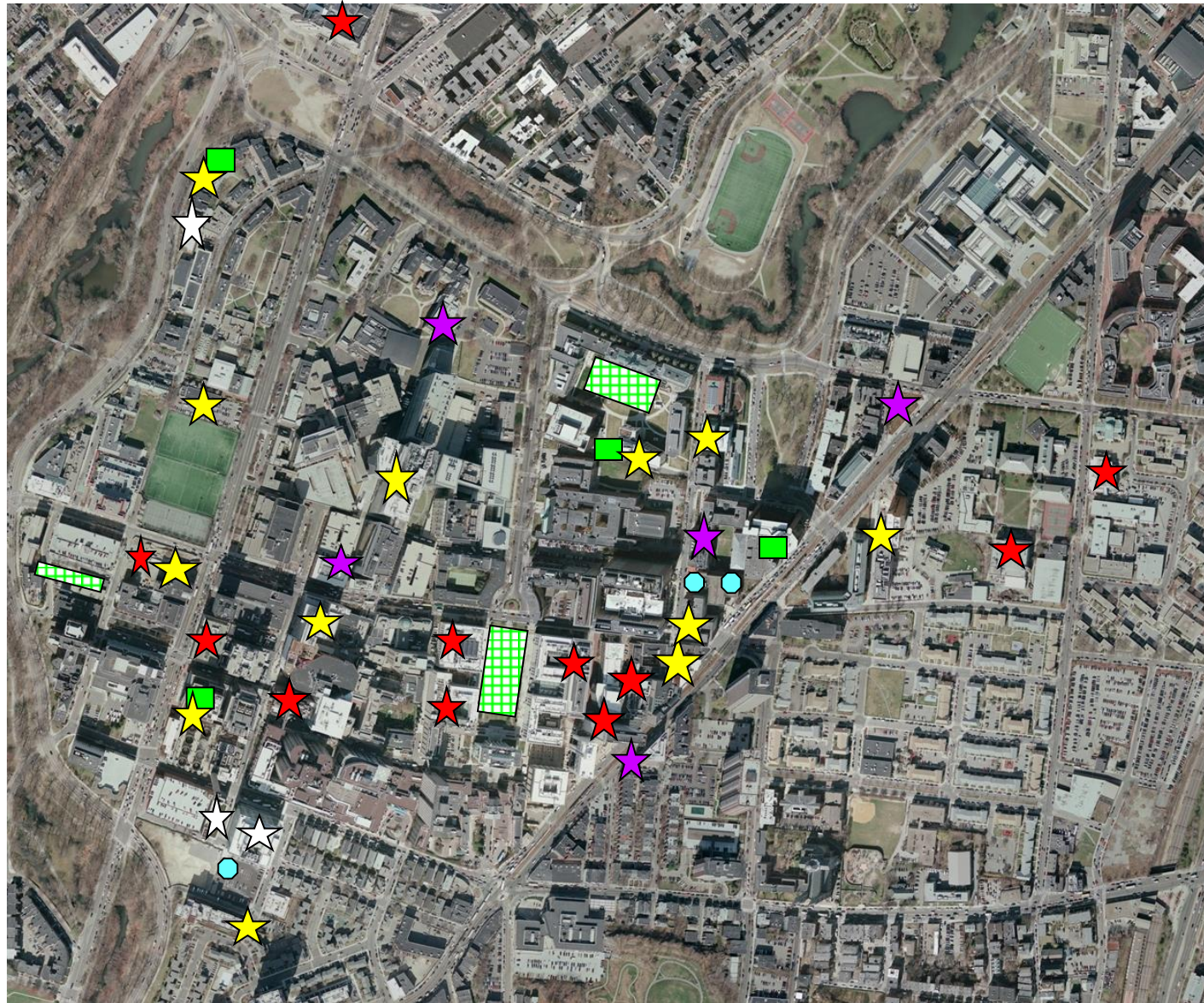
LEED Buildings (20)

- ★ LEED Gold (12)
- ☆ LEED Silver (3)
- ★ LEED Certified
- ★ LEED Certifiable (5)
- ★ LEED Commercial Interior Renovations - All Levels (11)
- Under Construction/
Pending Certification (3)

Cool Roofs

- Green Roof (4)
- Green Space over Building (3)

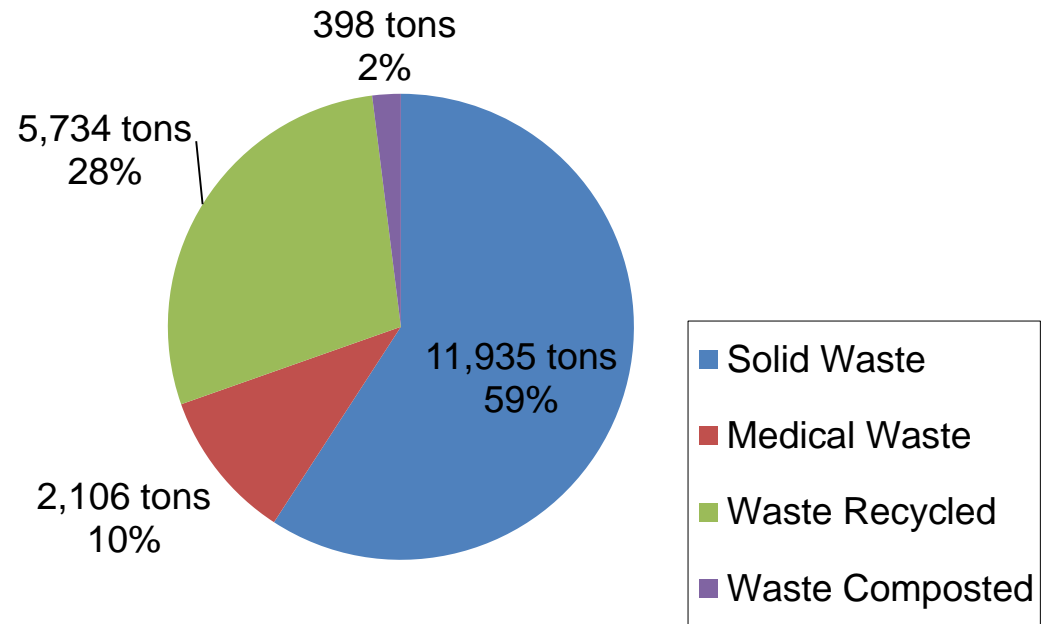
+ 31 Reflective
(white) Roofs



REDUCED WASTE, INCREASED RECYCLING

- Solid waste reduced by 16%
- 30% of total waste recycled or composted a 32% increase
- 2014 State compost requirements not reflected.

MASCO Members Waste Distribution 2013
Total Waste: 20,172 tons



LMA TAKES ACTION ON SUSTAINABILITY



April 2015



GREEN@LMA

*Longwood Medical and Academic Area activities
for a sustainable environment*

Also in this issue:

*Brigham's Energy
Savings Help Contain
Costs for Patients 2*

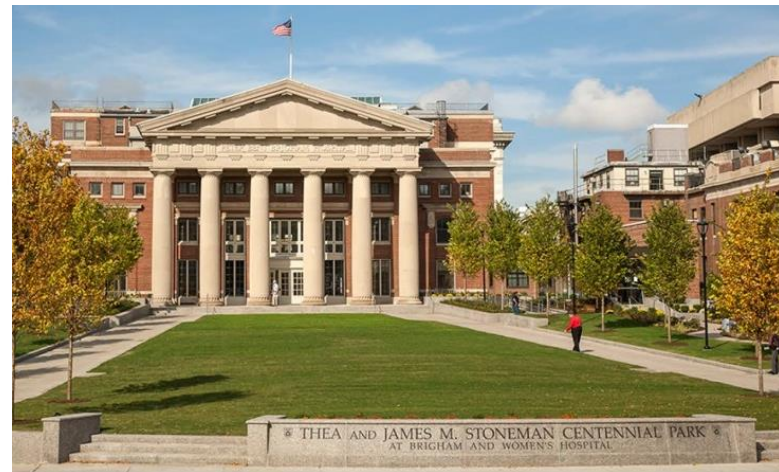
*Wentworth's New
Dorm on the Block . . . 3*

*New Fleet More
Energy Efficient 4*

*COF Sees Success
Composting with
Casella 4*

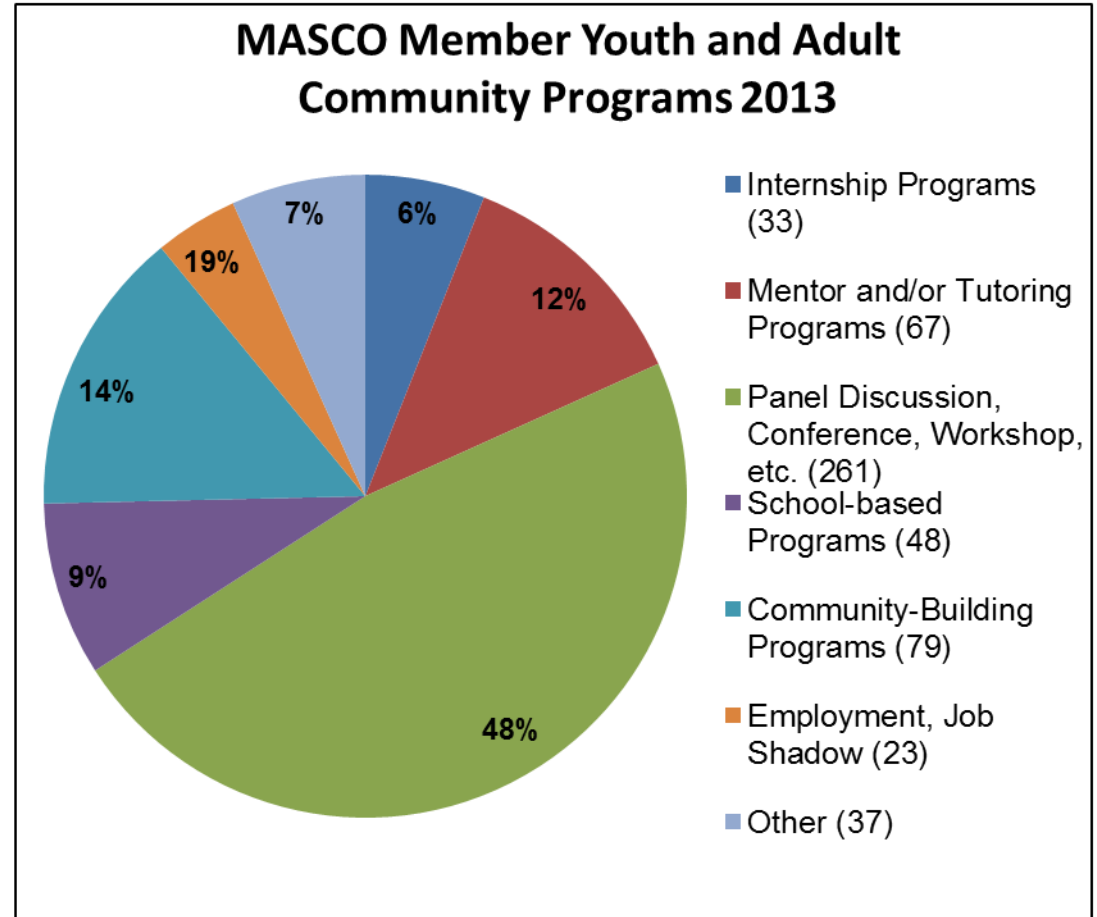
Green Spotlight

New Patient Garage: Park or Parking?



LMA GIVES BACK TO THE COMMUNITY

- 548 youth and adult community programs reported in 2013
- 306 youth programs
- 26,700 reported community participants (32% increase from 2006)



LMA GIVES BACK TO THE COMMUNITY

- Provision of \$74.5 million in Net Charity Medical Care for those who cannot pay
- Increase in City PILOT to \$6.8m in FY14
- Continue growth of good jobs, with up to 13,200 more employees projected by 2030

**Funding for Transportation is
essential for the future of the LMA
and for the State**

LMA Employees Come from Across the State and New England

Other Corridors

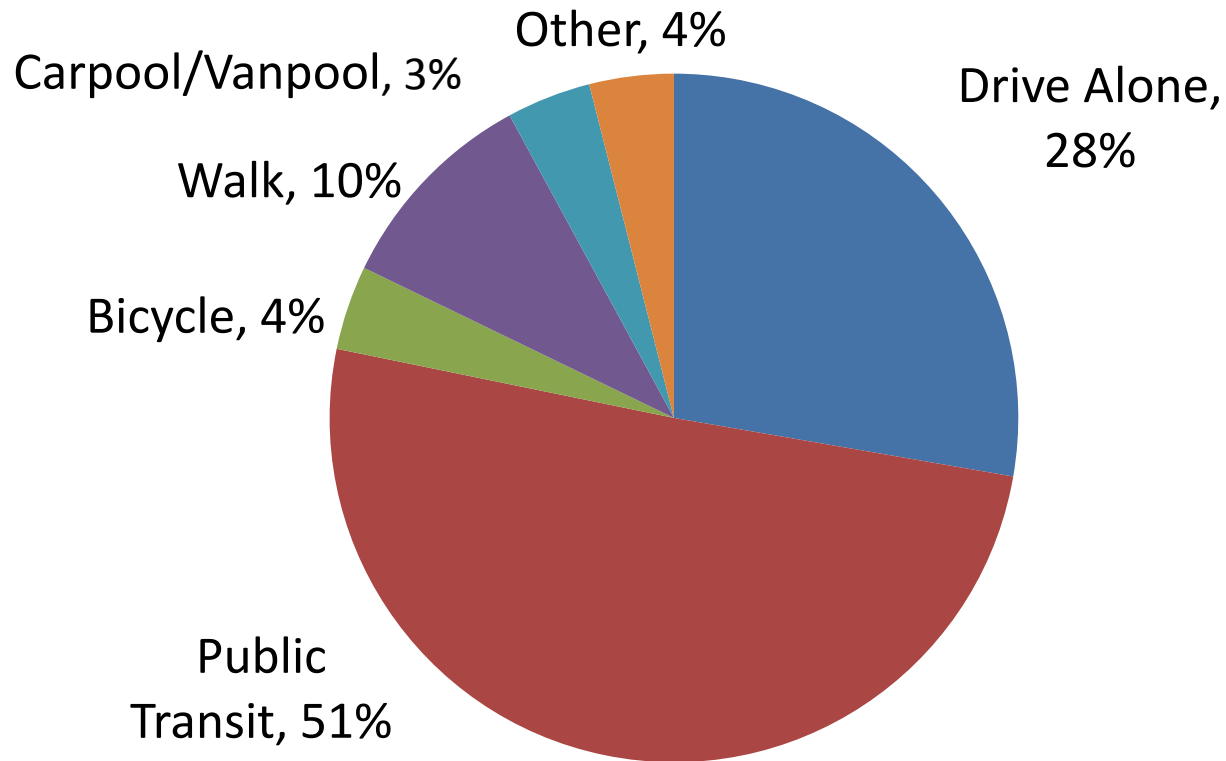
26	0.1%	VT
65	0.1%	Western MA
102	0.2%	CT
115	0.3%	ME
397	0.9%	RI
737	1.6%	NH



INSTITUTIONS INCREASE FINANCIAL SUPPORT OF PUBLIC TRANSPORTATION

- \$22 million in total spending on T-passes (230,000 passes)
 - 7.3% growth in annual T-passes sold (over 2010)
- \$11 million in annual subsidies for employees (30-70% face value)
- MBTA service supplemented by \$12 million in privately funded transportation
 - \$8.4m funding for MASCO shuttles

THE LMA CONTINUES TO SHIFT EMPLOYEES AWAY FROM DRIVING



- Drive alone decreased by 19% since 2000
- Transit use increased by 12%
- Walking and biking increased by 7%

TRANSPORTATION ENHANCEMENTS ARE CRITICAL

Raise State transportation funding levels

- Yawkey Station and additional stops completed (2014)
- New station platform at Ruggles
 - Secured TIGER funding (2014)
 - Construction scheduled (2018)
- Rationalize and improve Crosstown bus services
- Implement pedestrian, cyclist, auto and bus improvements and amenities in a 'Complete Street' approach