



Hygienic Cladding Solutions

White, Pastel & Vibrant Colours
Satin & Gloss Ranges



The complete cladding solution. A quality, cost efficient, high performance hygienic wall and ceiling system that you can rely on.

Our complete cladding range offers a dependable, hygienic, simple and attractive wall cladding solution that can be applied to new or old surfaces for a sealed clean room environment. Whatever the application or legislative requirement, the versatile choice of sizes, colours, profiles and fixing options have been tailored specifically to ensure the range will offer a quick, durable and superior finish.

- ▶ High quality, time and money saving innovations
- ▶ Colour consistency
- ▶ Food safety approved
- ▶ Extensive range of matching profiles and weld rods
- ▶ Specialised range of adhesive and sealant

White & Pastel Colours - Satin Range

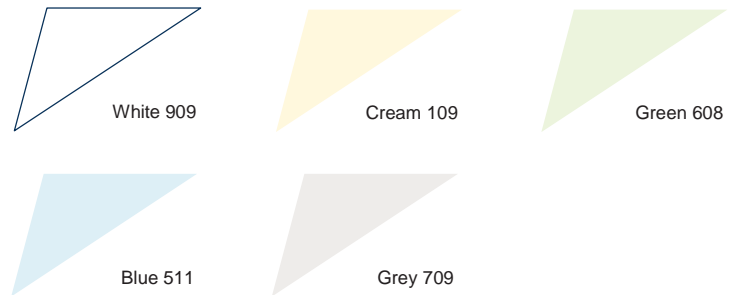
The uPVC satin range is available in a choice of white and pastels, perfect for applications where a high degree of hygiene is essential. The satin range offers a unique combination of properties including good impact strength, food approval and excellent fire rated performance. Our material is ideal for applications including commercial kitchens, food preparation, clean rooms, toilets, changing rooms, and all areas that require a sealed wall cladding solution. Quick and easy to install when installed using our comprehensive range of accessories.

Sheets

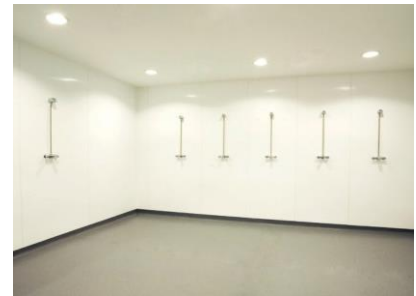
Length x Width	Thickness
2440 x 1220mm	2mm
3048 x 1220mm	2mm
2440 x 1220mm	2.5mm*
3048 x 1220mm	2.5mm*
2440 x 1220mm	3mm
3048 x 1220mm	3mm

*Pastel only available in 2.5mm
Other lengths available on request.

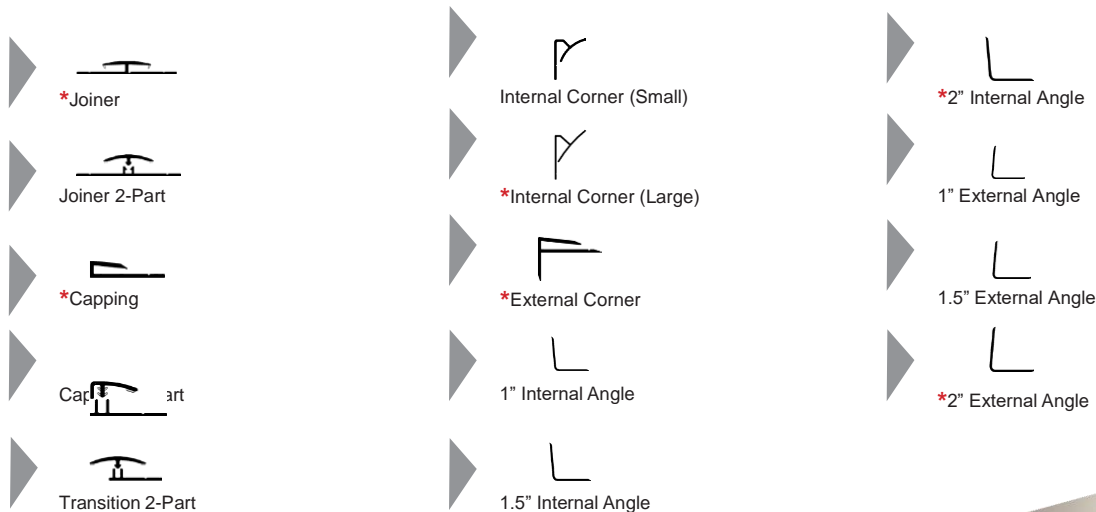
Colour Range



Colours shown are for illustrative purposes only, samples available on request.



Profiles



All profiles are available in 2440mm and 3048mm lengths.

*Pastels available where indicated



White & Vibrant Colours - Gloss Range

Available from stock in white and ten standard colours, our high quality gloss sheets offer the same unique properties as the satin range. The range extends the possibilities for colour design whilst retaining all the hygienic practicalities necessary. A colour match service to match brand identity is available, minimum order quantities may apply.

Sheets

Length x Width	Thickness
2500 x 1220mm	2.5mm
3048 x 1220mm	2.5mm

Other lengths available on request.



Joiner 2-Part



Capping 2-Part



Transition 2-Part



Internal Corner (Small)



External Corner

All colour profiles are available in 2440mm and 3048mm lengths.

Colour Range



Purple 408



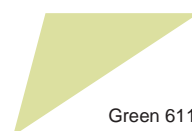
Red 306



Pink 406



Orange 810



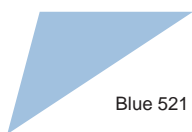
Green 611



Lime 610



Avocado 613



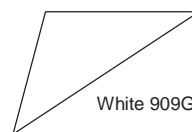
Blue 521



Grey 712



Black 953



White 909G

Colours shown are for illustrative purposes only, samples available on request.



White & Vibrant Colours - Weld Rod & Sealant Range

Our comprehensive range of weld rods and silicone can be used with or without our profiling system. Welding rods are suitable for thermal welding processes commonly used in the plastics fabrication industry, while the high quality silicone based sealant provides a long lasting heat resistant and waterproof alternative solution.

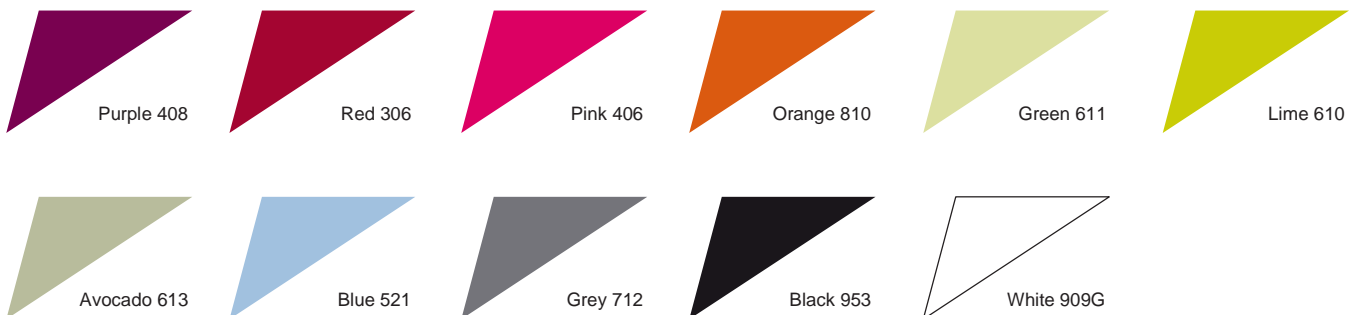
Weld Rod

4.5mm dia 50 mtr coils

Sealant

Cartridge 310ml

Colour Range



Colours shown are for illustrative purposes only, samples available on request.

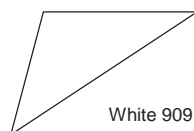
White - Ceiling Cladding Range

The uPVC ceiling cladding range completes any hygienic environment. The double skin construction offers a lightweight, moisture resistant ceiling system that is easily installed due to its tongue and groove detail and range of profiles.

Ceiling Planks

Length		Width
3000mm	x	250mm
4000mm	x	250mm
5000mm	x	250mm

Colour Range



Profiles



Joining Strip



Edging Strip 2-Part

All profiles are available in 5000mm lengths.

The ceiling cladding system can be installed using suitable sealant or by various mechanical fixing options.

Please contact your local branch for advice.

Adhesive Range

The Complete Cladding System

2-Part Adhesive

Once mixed, a paste consistency with gap filling capabilities is achieved. When cured, a tough, long lasting resilient bond is formed which is resistant to water, solvents and heat.

Water based adhesive also available on request.

Adhesive/Sealant

This high quality adhesive/sealant provides excellent adhesion to many surfaces, remaining permanently elastic after curing.

Adhesive Economy Grade

A general purpose, high strength adhesive with good gap filling properties, providing excellent bond strength without the use of other fixings.

Adhesives



2-Part Adhesive 6ltr



Adhesive/Sealant
Sausage 600ml



Adhesive/Sealant
Cartridge



Adhesive Cartridge
Economy Grade 380ml

Product Overview

Jointing

Both 1-part and 2-part joining strips are complete with flexible seals to offer a watertight finish that is long lasting and highly effective.

Weld rods are available in our colour match range to offer an alternative look.

Capping

Designed to be used at the bottom and top edge for a long lasting, neat and professional finish.

Angles/Corners

We offer up to three sizes of internal and external angles 1", 1.5" & 2". Both angles and corners are designed to give a snug and smooth fit to the wall.

Product Benefits

Fixing

Sheets can be fixed to the majority of dry substrates dependant on surface suitability. Using the adhesives, in association with our range of profiles is all that is required to provide a complete hygienic installation.

Cutting

uPVC products are easily cut, the most suitable method is to use a jigsaw with a fine toothed blade. If you are using a circular saw, use a fine TCT blade.

Cleaning

Using a soft cloth and diluted mild detergent is normally all that is required. Do not clean using any solution with a temperature exceeding 60°C. Do not use any abrasive cleaners, pads or wire wool as this will damage the surface.

Chemical Resistance

Resistant to virtually all commonly used chemicals

Fire Resistance

uPVC is a self extinguishing fire retardant material. Our cladding materials are tested to meet the BS 476 part 6 and Class 1 at BS 476 part 7. For other certification information please visit our website.

Food Safety Compliant

All our uPVC cladding materials conform to all the latest regulations intended for food contact, please contact your local sales office for current compliance certification.

Product Advice

Storage & Conditioning

Sheets should be fully supported and stored on a flat surface. They should be left for a minimum of 24 hours to attain the ambient room temperature prior to installation (min 14°C).



