

clever – creative – sustainable – smart



Pallet Frame

1200 x 800 x 400 mm / 800 x 600 x 400 mm

euroframe and eurofold

Pallet Frame *euroframe* and *eurofold*

- These robust pallet frames are suitable for more multiple use and can be stacked without slipping.
- They are easily assembled and disassembled in just a few simple steps (saving space of up to 85%).
- Their low weight also allows for easy manual handling.
- As they are easy to clean, the frames can also be used in hygienic and wet areas.
- Side and corner elements consist of HDPE and are therefore weather- and corrosion-proof.
- The plastic used is chemical and acid resistant as well as odour- and tasteless.
- Their double-walled construction displays good mechanical properties



A perfect pair: *euroframe* 1200 x 800 mm on an UPAL-U



The «intelligent» corner elements of the *eurofold* prevent unintentional folding.



The saved space of the collapsed *eurofold* is approximately 85%.

Suitable for all Utz pallets, wooden pallets and other common plastic pallets in Euro format.

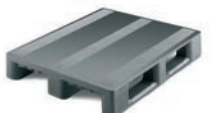
utz UPAL-U



utz UPAL-H



utz UPAL-S



utz UPAL-I



Wooden pallets



Compatible with the Utz stacking frame



Stacking frame 1200 x 800 mm

External dimensions: 1200 x 800 x 400 mm
Internal dimensions: 1150 x 750 mm
Material: HDPE



Article code	Article	Style	Weight	Colour
58-1208-2	euroframe	fixed	10.0 kg	light grey
58-1208	euroframe, reinforced	fixed	12.5 kg	light grey
58-1208-0-101	euroframe, reinforced with stainless steel corner elements	fixed	16.5 kg	light grey
58-1208-1	eurofold	foldable	10.0 kg	light grey

Stacking frame 800 x 600 mm

External dimensions: 800 x 600 x 400 mm
Internal dimensions: 750 x 553 mm
Weight: approx. 7.1 kg
Material: HDPE



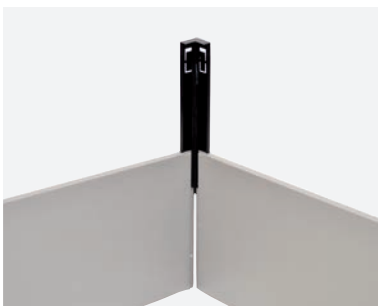
Article code	Article	Style	Colour
58-8060	euroframe	fixed	light grey

Cover eurotop

Article code: 58-1208-3
External dimensions: 1200 x 800 mm
Weight: approx. 6.4 kg
Material: HDPE
Standard colour: light grey



Assembly of individual parts



Position the wall elements and insert the corner element into the slots of the wall element.



Push the corner element all the way down.



Pull the wall element up until it engages.

