

# CURRENT ASHESI PRIORITIES

Over the past 14 years, Ashesi has established a reputation as a leader in undergraduate education in Africa, with an educational experience that fosters ethical leadership, an entrepreneurial mindset and the ability to solve complex problems. These qualities are what set Ashesi alumni apart from their peers. To date, 93% of Ashesi graduates have found quality placement within a few months of graduation, and over 90% have stayed to work for progress in Africa.

At the heart of the Ashesi experience is our campus culture. Ashesi students come from 18 African countries to learn, live and innovate together. 48% are women, and 51% come from disadvantaged backgrounds. On campus, these students join with faculty and Ashesi leadership to engage in discussion, civic action and connection with each other—under a shared mission to transform the African continent.

Now we are working to extend the Ashesi education to more young Africans by growing to 1,000 students—while maintaining and strengthening this unique campus culture. For Ashesi to serve more students, we must continue to expand our facilities and strengthen our scholarship program. We invite you to partner with us to make this growth possible.

## CAMPUS GROWTH

### building more spaces for students to live, learn and collaborate

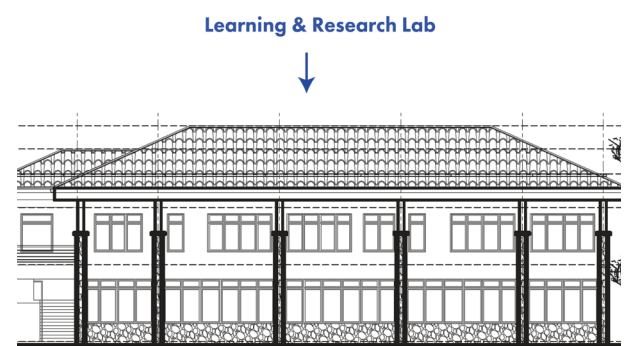
Since the 2011 inauguration of campus, Ashesi has raised funds and successfully managed construction projects for additional dormitories, faculty housing, a health center, business incubator and an engineering workshop. We are humbled and deeply grateful to the visionary donors who supported those projects.

For Ashesi to increase our impact and serve more students, we need to build more classrooms, labs, student housing and collaborative spaces. Our immediate priorities are to raise funds for the construction of a Learning & Research Lab, additional student housing and a Student Center.

### Learning & Research Lab

To prepare Ashesi students to tackle Africa's complex, real-world challenges, we must engage them in three ways: with practical, hands-on projects; through in-depth classroom learning; and in collaborative teams with a mix of skills. The proposed Learning & Research Center will adjoin the recently completed engineering building and will complement the university's existing engineering resources and equipment by providing:

- Additional classrooms, workshops and laboratories
- Infrastructure for implementing training programs, under Small & Medium Enterprise Development, to be taught by Ashesi faculty
- Spaces for collaboration with the Ghana Climate Innovation Center (GCIC) at Ashesi, funded by the World Bank Group
- Space for Ashesi faculty research



The funding required for this center is estimated at \$2.4M. A lead gift of \$500k has been secured and we are actively seeking additional funding of \$1.9M.

## Student Housing

A fully immersive campus experience is an important part of an Ashesi education. Ashesi transforms students' ethics and attitudes, and fosters a willingness to take responsibility and to lead. As we enroll more students from across Africa, it becomes even more important to have the housing and gathering spaces to support this cultural transformation, and to foster community in our diverse student body.

In addition to promoting a strong campus culture, on-campus student housing has played a very important role in convincing families to send their daughters to Ashesi, especially in their first year. As such, the university's current ten-year plan seeks to improve the availability of on-campus housing. Currently 42% of students live on campus. We seek to increase that ratio to over 60%.

Earlier this year we met our \$2.5M goal to build housing for another 96 students (B, pictured above). Generous Ashesi donors gave gifts from \$25.00 – \$1M to help meet the goal. Thank You! Construction of the dorm started in fall 2016. We look forward to keeping you up to date on our progress.

But the demand for more housing is still high and we are raising funds to build dormitory Cluster C (above). The funding required to build Cluster C is \$3.1M. A lead gift of \$1.5M has been secured and we are actively seeking additional funding of \$1.6M to begin construction.

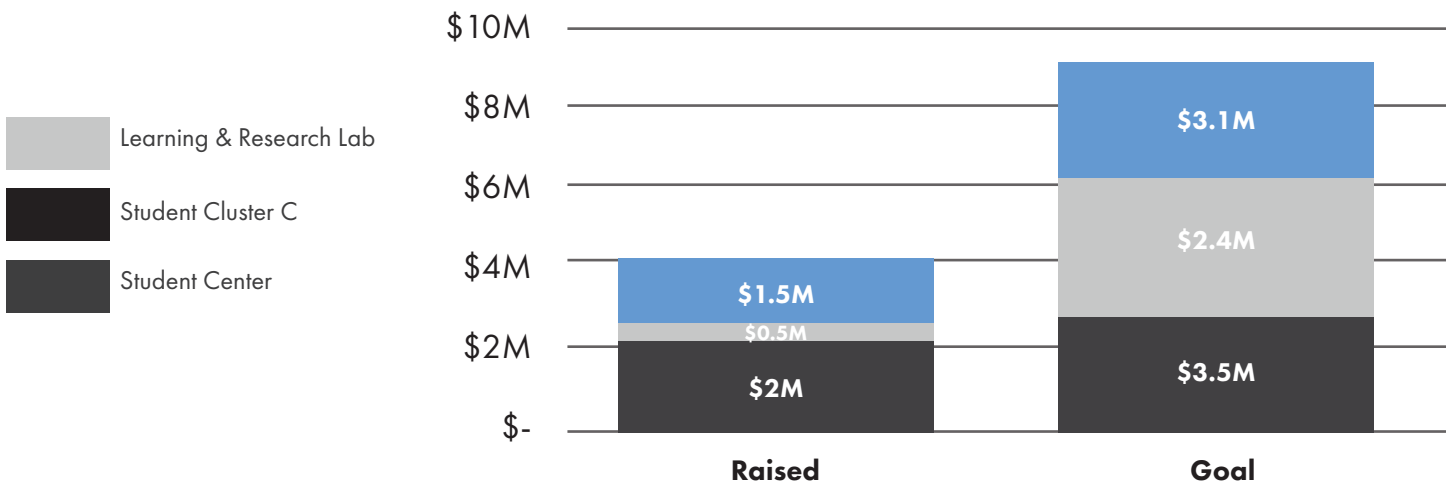
## Student Center

At the crest of campus, the Student Center will serve as a focal point for students to engage with each other and share experiences outside the classroom. The new campus hub will have spaces for meals, events and student activities. It will host offices for student government, a campus radio station and internal and external event spaces.

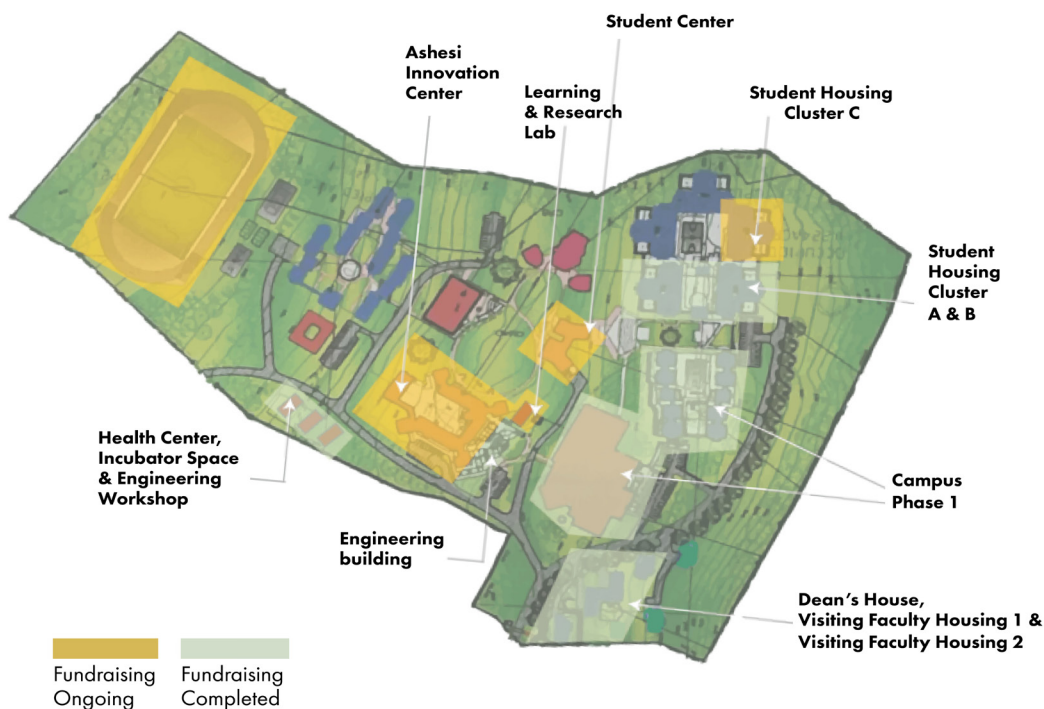
The funding required to build the Student Center is \$3.5M. A lead gift of \$2M has been secured and we are seeking additional funding of \$1.5M to begin construction.



## CAMPUS GROWTH: FUNDRAISING PROGRESS



# PLANNED CAMPUS EXPANSION



## SCHOLARSHIPS

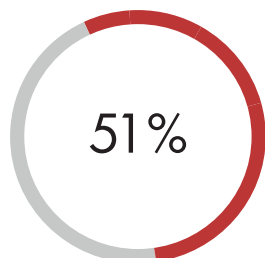
### increasing access to an Ashesi education

Ashesi scholarships provide a life-changing education to high performing students who do not have access to the funds they need to attend college. For the 2016-2017 academic year, Ashesi tuition, room and board is just under USD \$12,000.

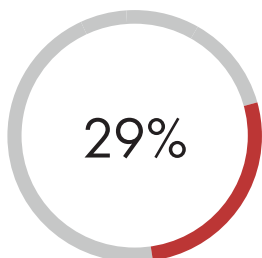
Gifts of all sizes to the scholarship fund are pooled together and 100% of the funds go directly to the university. The Admissions Team has full discretion on how the scholarships are awarded to best meet student need. The priority for Ashesi Foundation scholarship funds for the 2016-2017 year are:

- Emergency scholarships for families that face unexpected hardship.
- Opportunity grants to allow students to participate in internships or extracurricular activities.
- Supplemental grants to cover meals and housing expenses.

Another priority is to strengthen the scholarship program by building an endowment. Ashesi is here to stay and we want to build an endowment which will support the needs of students for generations to come. Gifts of all sizes to Ashesi Foundation's scholarship endowment strengthen the scholarship program in perpetuity and make a long term commitment to investing in Ashesi students.



of students receive scholarships



of students pay nothing for room, board or tuition



in scholarships to date

## WHAT'S NEXT



**New majors** to educate policy leaders who will help create the political and economic environment that will enable African enterprises to thrive.

**Economics:** The next generation of economic policy makers in Africa must ensure that resources are managed effectively to drive development in an interconnected and complex global economy. We seek to educate such leaders by implementing an economics program grounded in strong quantitative analysis, ethics and multidisciplinary perspectives.

**Public Policy & Law:** With a multidisciplinary program rooted in Moral and Political Philosophy and integrated with courses in Economics, Design Thinking and Problem Solving, Ashesi seeks to educate a new generation of leaders in public service who will design and implement sound policies that empower citizens and organizations to advance Africa's transformation.



**Creation of an Innovation Center** to further develop a community of changemakers. The center will be a hub for entrepreneurship and forward thinking: it will provide spaces and programming that will connect and empower innovators within and beyond the Ashesi community. It will pair solutions with venture funding, allow for ideation and prototyping, and be a launchpad for new businesses, including the ventures of the Ghana Climate Innovation Center.

## JOIN US

To learn more about these projects, our 10-year plan, and how you can partner with us, contact the foundation at **206.545.6988** or **foundation@ashesi.org**.



Ashesi University Foundation  
1414 31st Avenue South  
Suite 301, Box #11  
Seattle, WA 98144 USA

(206) 545-6988 | [foundation@ashesi.org](mailto:foundation@ashesi.org) | [www.ashesi.org](http://www.ashesi.org) | [www.ashesi.edu.gh](http://www.ashesi.edu.gh)