

# MonitorPro

Helping US Mining take control  
of their Enviromental Impact



EHS Data Ltd  
June 2019

## Key Facts

# 1000+

Trusted users worldwide

# MCerts

First monitoring software to receive this quality certification

# 22 years

Research & development

# 200+

Global mining clients

# Intelligent Innovation

Secure compliance obligations with powerful reporting

## MonitorPro at a Glance

### Environmental Intelligence to Drive Business Performance

**MonitorPro** is a world-class database management system dedicated to streamlining environmental monitoring and reporting. Developed by UK based company, EHS Data, **MonitorPro** has been used in the US by major mining companies since 2010. During that time continuous development, the latest technology with unparalleled customer support, has created an industry leading solution for environmental professionals.

One of the biggest challenges faced by responsible organisations is protecting the environment by reducing environmental impacts, meeting increased regulatory demands while saving on resources. Using the latest technology, **MonitorPro** delivers this plus a comprehensive view of environmental performance across all operations.



*MonitorPro is trusted by organisations spanning five continents, with locations in: Australia, North America, Canada, South America, Europe, Asia and Africa.*



enquiries@ehsdata.com [www.ehsdata.com](http://www.ehsdata.com)



# Why the need for Environmental Monitoring in Mining in the US?

Increasingly, US mining companies recognise that careful and detailed management of their environmental impacts is crucial to managing corporate risk and attracting outside investment.

Mines and their associated processes in the US are well regulated to ensure the operations do not cause risk to the wider environment. These regulations require operators to conduct rigorous and continuous monitoring programs.

MonitorPro has an extremely flexible reporting engine which has enabled EHS Data to develop specific reporting templates, for example the Discharge Monitoring Report (DMR) used specifically for NPDES permits.

Other states require self-monitoring report forms (SMRF) which are electronically generated by MonitorPro.

*The western states contains some of the richest resources, prominently copper and gold. The MonitorPro system has a high number of users in that area.*

## \*621,000

Approx number of employed people directly working for the US mining industry.

\*[statista.com/topics/1143/mining/](https://www.statista.com/topics/1143/mining/)



enquiries@ehsdata.com [www.ehsdata.com](http://www.ehsdata.com)

### Permits

*The first and most obvious drivers are permits. These impose conditions on an operation which force it to manage its environmental impacts responsibly. There are various regulatory bodies around the world who grant permits that can be something of a minefield to navigate. But navigated it must be since no permit equates to no operation.*

### Mine Stage

#### ► Exploration

Vegetation clearance; impacts on cultural heritage; ground disturbance, water management (e.g. for drilling); weed management; spills and environmental accidents; loss and damage to topsoil required for eventual rehabilitation.

#### ► Construction

Land disturbance and local environment compared to baseline; ground water and surface water; dust; waste management; noise.

#### ► Operation

Air Quality (e.g. dust, SO2 and other emissions from plant); noise; ground water and surface water impacts; water use, waste rock management and subsequent acid rock damage and erosion; chemical use; environmental incidents (e.g. spills); waste management (identification and segregation of waste streams, recycling)

#### ► Close Aftercare

Seepage and toxic effects from waste rock and tailings; rehabilitation of the site.

### Significant Environmental Impacts

More Information

[ehsdata.com/articles/the-need-for-an-environmental-management-system](http://ehsdata.com/articles/the-need-for-an-environmental-management-system)



# Shaping Environmental Compliance in Mining with MonitorPro

Seamlessly Import or Email Data Directly to MonitorPro from the Field

Powerful Satellite Imagery Technologies inc. Google & Sentinel Mapping

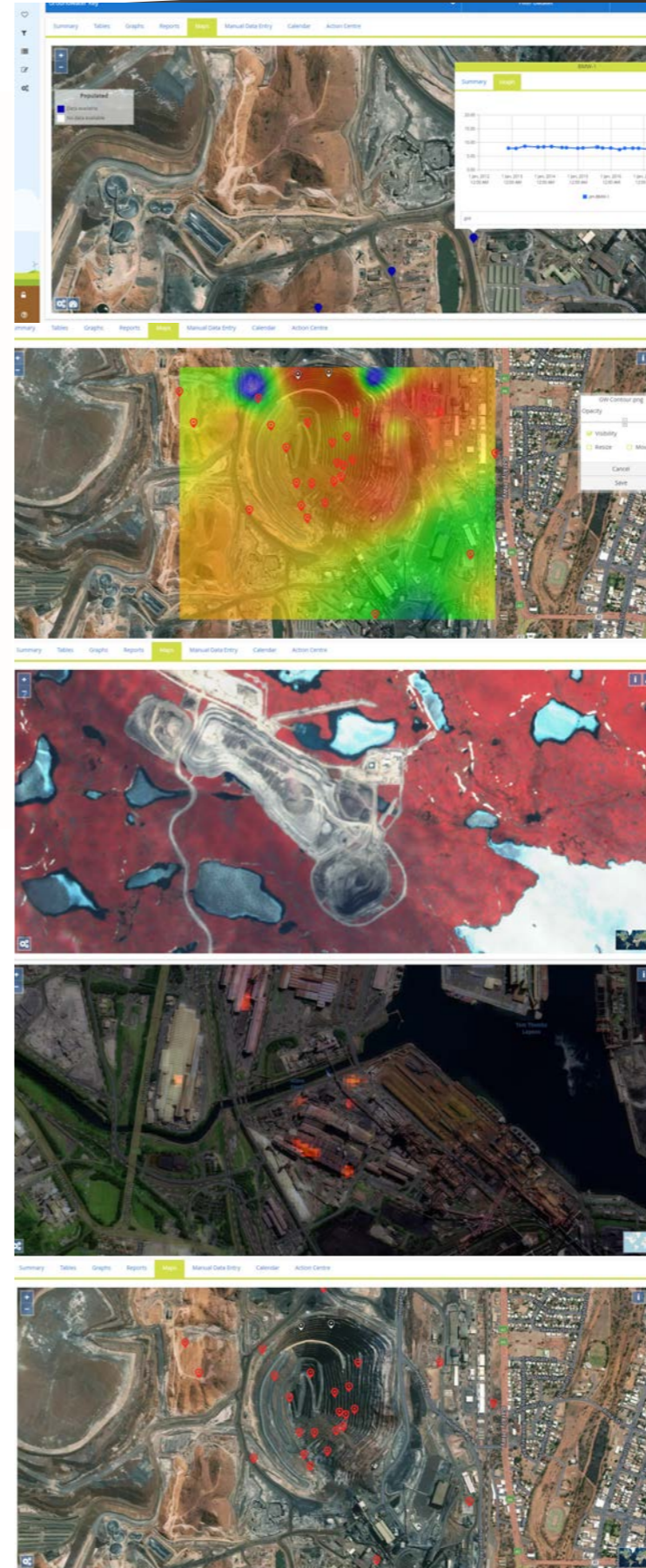


Areas of **MonitorPro** expertise include:

- Compliance and regulations
- Validation of data
- Visuals and dashboards
- Highly configurable
- Scheduling
- Import email data directly into MonitorPro
- Powerful satellite imagery - Google & Sentinel
- Show the different layer styles
- Key account management

Microsoft Partner

Silver Application Development



Check historical vegetation events for one site...

## Using Environmental Intelligence to Drive Business Performance

EHS Data and its **MonitorPro** Database Management Systems have been being used by companies in the US since 2010. During that time continuous development and additions to the suite of products and services has created an industry leading solution for environmental professionals.

The **MonitorPro** community in the area has grown to around 25 companies involved in the Metals & Mining industry. Regulation in the region means large volumes of data needs to be collected and reported to ensure detailed and accurate compliance.

Over this time EHS Data has gained significant insight into the demands placed upon these organisations in managing their environmental obligations, enabling us to offer a complete and tailored service to the industry.

“The implementation of MonitorPro is part of our commitment of risk management towards our goal of zero impact to the local community and environment. MonitorPro helps to manage the varied data of our operations in an efficient and auditable manner.”

Environmental Manager - US MonitorPro Client



enquiries@ehsdata.com www.ehsdata.com

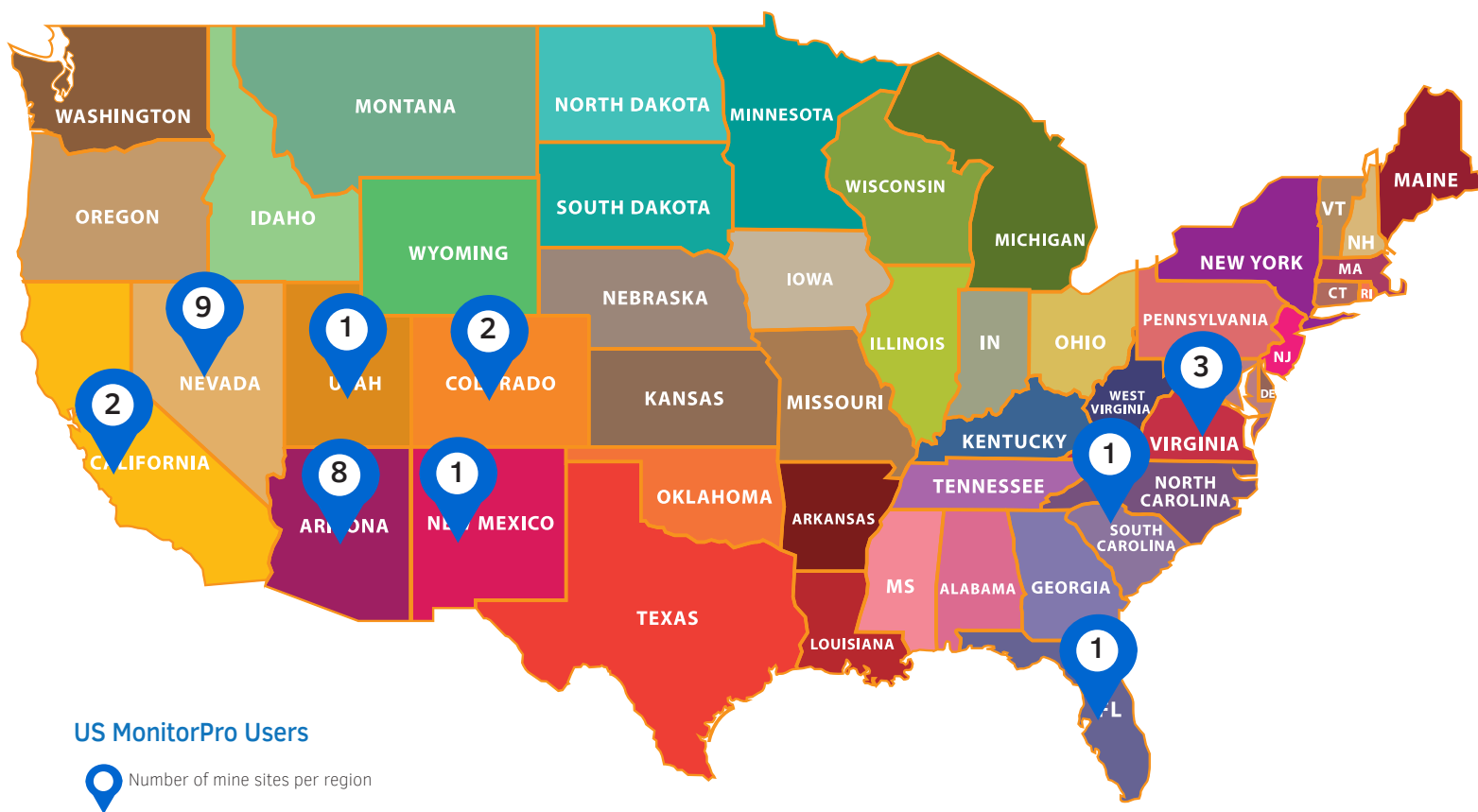


enquiries@ehsdata.com www.ehsdata.com

# Helping our US clients meet their Environmental Objectives

With trusted, flexible solutions developed around the demands of mining professionals in the US, our team will have the right solution for you. Over the years, we've worked on many projects saving clients time, saving them money, simplifying their reporting and providing solutions to keep their data secure and defensible.

Working alongside some of the biggest corporate enterprises in US mining, providing the best solution to manage their environmental accounting, **MonitorPro** is a comprehensive environmental accounting process, which is highly configurable with incredible flexibility and scalability.



## Head office - UK

t: +44 845 388 2458

e: [enquiries@ehsdata.com](mailto:enquiries@ehsdata.com)

[ehsdata.com](http://ehsdata.com)

## US office

t: +1 (0) 480 409 0752

e: [north.america@ehsdata.com](mailto:north.america@ehsdata.com)

[ehsdata.com](http://ehsdata.com)



[enquiries@ehsdata.com](mailto:enquiries@ehsdata.com)

[www.ehsdata.com](http://www.ehsdata.com)