

## Product Datasheet - WSL 80F1 Series - Doors

The Wrightstyle 80F1 series range of glazing systems provides an unlimited number of fenestration options. Utilising a range of high quality steel profile shapes it provides countless possibilities for fire insulated applications.

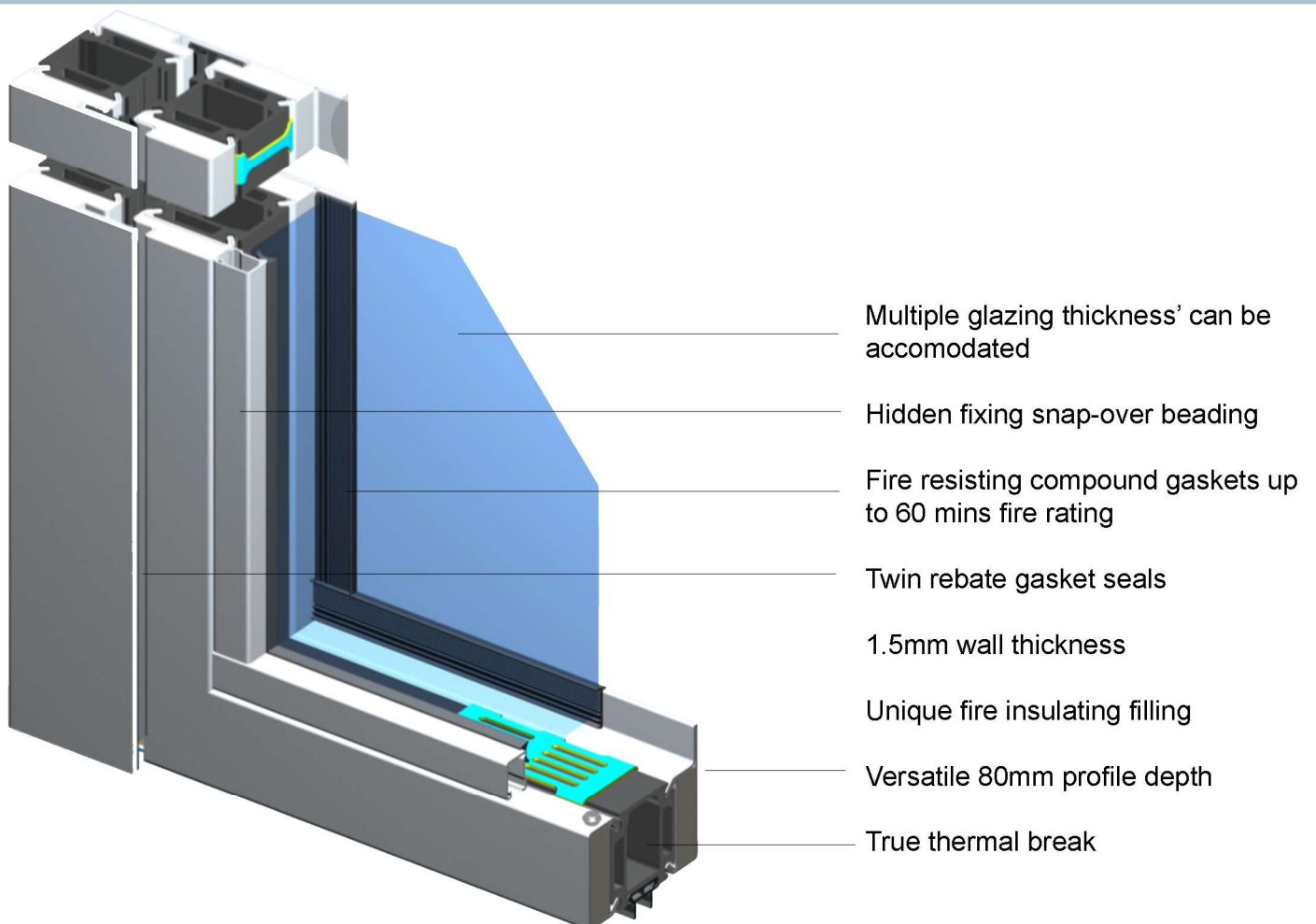
Multiple configurations of doors, screens and windows can be produced from Wrightstyle's vast range of profiles; an integral part of Wrightstyle's total glazing system solutions.

Profiles are produced from cold rolled hollow sections, manufactured to strict production tolerances from 1.5mm steel, pressed into an enhanced thermal break and filled with a unique endothermic infilling material to provide high specification performance.

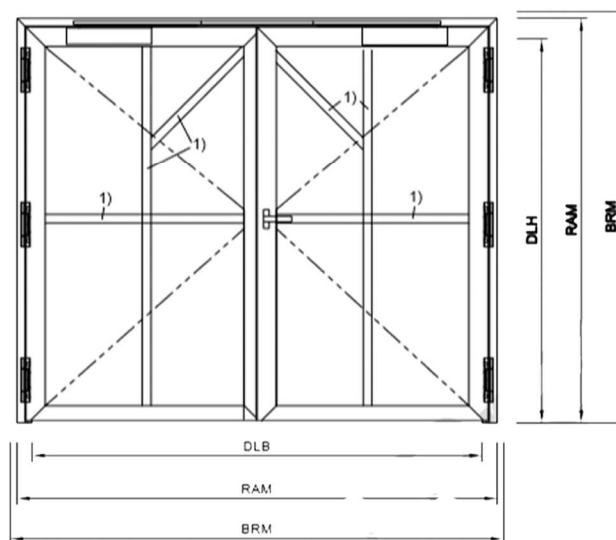
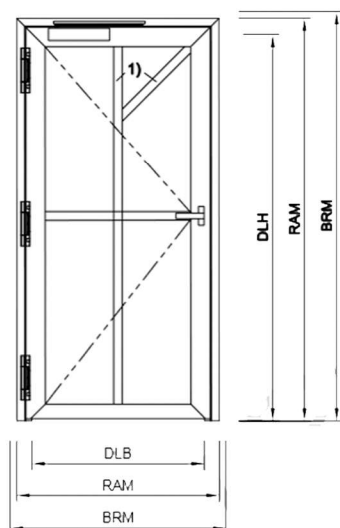
Modern manufacturing processes allow us to produce steel glazing systems, which combine the inherent strength and durability of steel, with the aesthetic qualities normally associated with aluminium systems. The following pages provide a brief overview of the capabilities of the systems.

- Competitively priced
- Multiple framing options
- High quality sendzimir galvanising
- Internal & external surface protection
- 1.5mm steel thickness
- Tested to 90 minutes fire rating
- Multiple hardware options
- Multiple tape or gasket glazing options
- Superior thermal break design to provide enhanced U value performance.
- Can be supplied in bar length, semi-prepared kit form or fully fabricated

### WSL 80F1 Series - Door Configuration (colours shown for clarity)



## Product Datasheet - WSL 80F1 Series - Doors



WSL 80F1 series door permissible dimensions 90 mins integrity and insulation

	Structural Dimension BRM - (mm)		Frame Dimension RAM - (mm)		Clear Passage DLB & DLH - (mm)	
	Width	Height	Width	Height	Width DLB	Height DLH
<b>Fire Resistant EI90 Single Door</b>						
EI90 Door	NA	NA	Max - 1852 *	Max - 3226 *	Max - 1400	Max - 3000
EI90 Door With Top Screen	NA	NA	Max - 1852 *	Max - 4540	Max - 1400	Max - 3000
EI90 Door With Side Screens	Unlimited	NA	Unlimited	Max - 3226 *	Max - 1400	Max - 3000
EI90 Door With Top & Side Screens	Unlimited	NA	Unlimited	Max - 4540	Max - 1400	Max - 3000
* Maximum frame expansion 156mm						

	Structural Dimension		Frame Dimension		Clear Passage	
	Width	Height	Width	Height	Width DLB	Height DLH
<b>Fire Resistant EI90 Double Door</b>						
EI90 Door	NA	NA	Max - 3280 *	Max - 3226 *	Max - 2828	Max - 3000
EI90 Door With Top Screen	NA	NA	Max - 3280 *	Max - 4540	Max - 2828	Max - 3000
EI90 Door With Side Screens	Unlimited	NA	Unlimited	Max - 3226 *	Max - 2828	Max - 3000
EI90 Door With Top & Side Screens	Unlimited	NA	Unlimited	Max - 4540	Max - 2828	Max - 3000
* Maximum frame expansion 156mm						

Note: Additional conditions may apply. Please check test data

## Product Datasheet - WSL 80F1 Series - Doors & screens

### General information on lock combinations for single & double leaf doors

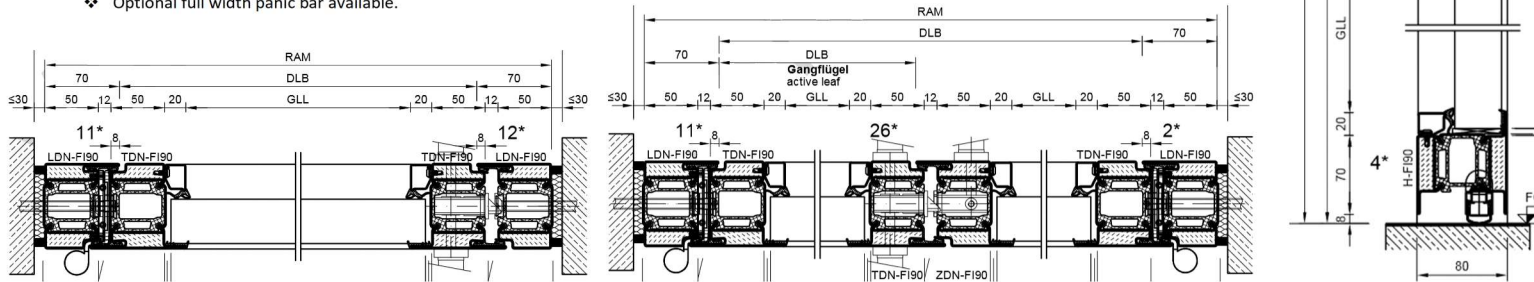
#### Single leaf door

- Single mortise deadlock DLH = 2400
- Single mortise deadlock with 2<sup>nd</sup> top lock = 3000
- Multi point lock = 3000

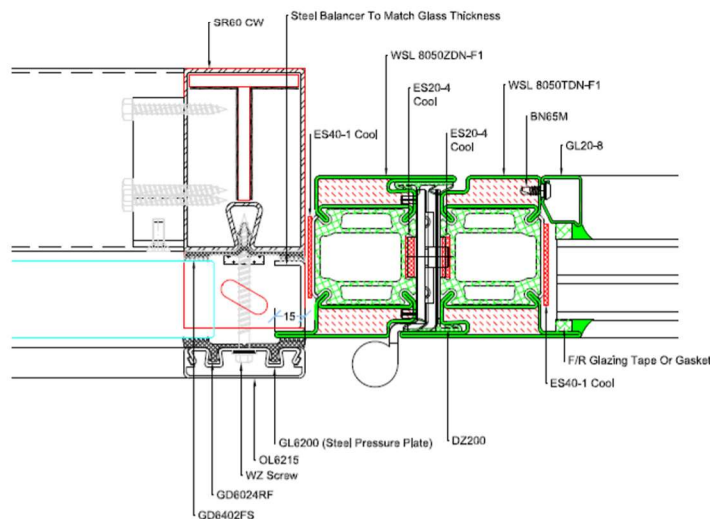
#### Double leaf door

- Single mortise deadlock in active leaf & inactive leaf fitted with top locking device. Optional lower locking device if required. = 2500
- Single mortise deadlock in active leaf & inactive leaf fitted with top locking device. Optional lower locking device if required. DLH = 3000 (**Only permitted if top & side screens are present.**)
- Single mortise deadlock with 2<sup>nd</sup> top locking device in active leaf & inactive leaf no requirement for locking device, retained closed with sequenced closer. = 3000
- Single mortise deadlock with 2<sup>nd</sup> top locking device in active leaf & inactive leaf fitted with top locking device. Optional lower locking device if required. = 3000
- Multi point locking device in active leaf & inactive leaf fitted with top locking device. Optional lower locking device if required. = 3000

- ❖ Sequence door closer required with above options.
- ❖ Optional full width panic bar available.



### WSL 80F1 series integration with SR60 series curtain wall



Special approved application for the installation of the 80F1 doors into the WSL SR60 series curtain wall system. Maximum parameters of:

Maximum Glass Width	Maximum Glass Height	Maximum Area
1376mm	3044mm	3.97 m <sup>2</sup>
(at 2884mm high)	(at 1304mm wide)	

Note: Additional conditions may apply. Please check test data