



**SPOTTERS
& WELDING ACCESSORIES**

SPOTTERS

& WELDING ACCESSORIES



ALUMINUM SPOTTER: HIGH-PERFORMANCE DENT PULLING TOOL

LIGHT AND MOBILE

This tool improves efficiency for quick dent repairs, allowing vehicles to be moved more quickly through the repair process, increasing shop productivity and profitability.

UNIQUELY DESIGNED

For aluminum repairs, it works equally as well while pulling dents out of steel body panels. Use to quickly attach studs for dent pulling or grounding. The high-tech discharge process creates the weld without damaging heat sensitive aluminum parts from the same system.

HIGHLY EFFICIENT

This dent puller is a portable spotter that offers a high-frequency inverter for rapid welding and pulling. It contains a built-in ground rod with automatic contact and requires minimum paint removal, only 20mm in diameter.

FEATURES AND BENEFITS

- **HIGH-FREQUENCY INVERTER** gives rapid welding and pulling
- **HIGH-TECH DISCHARGE PROCESS** — won't damage heat sensitive aluminum parts
- **LIGHT & MOBILE** — increases efficiency and speeds up the repair process
- **INCLUDED** in the Aluminum Work Station

ALUMINUM SPOTTER

Part No. 46534

ALUMINUM SPOTTER	
Input voltage	230V, 50-60Hz 1-ph
Absorbed power	0.6 kw
Fuse (slow blow)	16A
Weight	8kg (17.5lb)
Dimensions (LxWxH)	320x150x220mm (12.5x6x8.5in)
Max re-charge time	12 seconds
Spot gun with power cable	4 m, with detachable 10A plug
Ground cable	3m
Working temperature range	0-40°C

ALUMINUM WORK STATION: WITH THE ALUMINUM WORK STATION YOU'LL INCREASE YOUR ALUMINUM REPAIR BUSINESS!

A SOLUTION TO GALVANIC CORROSION

The Aluminum Workstation is designed to provide a solution for aluminum auto body repairs. Avoid galvanic corrosion by keeping your tools separate. With this dedicated tool storage, you will reduce the possibility of cross-contamination with steel particles, and with a built-in work area you can complete your jobs efficiently in one place.

UNIQUELY DESIGNED TOOLS

The unique advantage of the Aluminum Workstation comes from the design of the tools included. The dent pulling bars are constructed of light weight carbon fiber making them super light and 3 times stronger than steel! These exclusive tools offer the advantage of ease of use without compromising the strength of the tool.



FEATURES AND BENEFITS

- **CARBON FIBER TOOLS** — Lightweight for single tech ease of use and 3 times stronger than steel
- **SPOTTER 220V** — Adjustable pole for deep dents
- **LONG, SIDE-DENT REMOVAL TOOL** — Flexibility to repair full cab or bed scrapes or dents on trucks
- **NATIONAL SUPPORT** — Localized training, expertise and support

ALUMINUM WORKSTATION

Part No. 46539

ITEM	QTY.
Mobile Cart with Shelving, Tool Board & Work Area	1
Aluminum Spotter, 230V	1
Carbon Fiber Pull Bar, dent pulling system with 6 jaws (1x 50 cm (20"), 1x 100 cm (41.5"), 1x 160 cm (67.5"))	1
Fast Puller for Carbon Fiber Pull Bar	1
Hand Puller	1
Aluminum Hammers, professional grade	4
4 mm screws, M4x16mm AISI12 (Box 100)	3
4 mm screws, M4x16mm AIMg3 (100/Box)	3
Threaded pull washers (20/Box)	2

SPOTTERS

& WELDING ACCESSORIES



CR35 SPOTTER: MICRO-PROCESS CONTROLLED SPOTTER

FOR EASY AND LIGHT JOBS

The **CR35** is designed, dimensioned and manufactured for resistance welding on thin steel sheet. This micro-process controlled spotter is perfect for welding and traction of all studs, nails, washers, rivets and bolts.

SIMPLY PUSH THE SWITCH

All the welding and heating operations are easily controlled by pushing the switch on the gun. The welding cycle starts 3/10 seconds after contact between electrode-metal sheet.

VERSATILE

Besides the manual regulation modalities, the CR35 offers some optimized welding programs such as:

- MR Welding
- TIP Welding
- Pulse heating
- Carbon electrode heating, etc.

FEATURES AND BENEFITS

- **VERSATILE** with manual regulation or multiple welding programs available
- **EASY START** with the controlled switch, the welding cycle starts 3/10 seconds after pushing
- **SINGLE SPOT PROCESS** gives fast, accurate welding
- **TOUGH**, follow the predictive maintenance plan and get the best from your equipment

SPOTTER CR35

Part No. 33434

CR35	
Input voltage	230 V, 50-60Hz 1-ph
Rated power at 50 %	2kVA
Max power	16kVA
Fuse rating (slow blow)	16A
Secondary no-load voltage	7V
Secondary short circuit current	2,8KA
Duty cycle	5 %
Dimensions (WxLxH)	130x12x150mm (5x00x6in)
Weight	14kg (31LBS)

PLASMA CUTTER: ACCURATE, CLEAN, HIGH-SPEED CUTTING

CUT THROUGH ANY CONDUCTIVE MATERIAL IN SECONDS

Car-O-Liner's **Plasma Cutter** is the perfect cutting tool for all high-strength steels. With excellent cutting performance on thin sheet metal and high wear resistance for increased tool life, you will achieve greater efficiency in your workshop.

WITH INVERTER TECHNOLOGY

Using inverter technology, the **Plasma Cutter** guarantees accurate and clean plasma cuts up to 10mm in thickness. Easy to handle and operate, this system is suitable for cutting thin materials at high speed.

ULTIMATE PORTABILITY

Internal air compressor enables operation in environments where external compressed air is not available.

FEATURES AND BENEFITS

- **CONTINUOUS OUTPUT CONTROL**, focus the arc for different material thickness
- **FAST**— remove damaged parts quickly and efficiently
- **NARROW CUT LINE**, no messy working edge

PLASMA CUTTER

Part No.46553

PLASMA CUTTER	
Input voltage	230V 50-60 Hz 1-ph
Absorb power	60%, 3.5 KVA
No-load voltage	350V
Fuse	16A
Current range	5-30A
Cutting current	35%, 30A
Cutting depth on steel class	10mm
Air pressure	5-5.5 bar
Compressed air capacity	100 l/min
Weight	11kg (24LBS)
Dimensions (LxWxH)	220x400x220mm (8.5x15.8x8.5in)
Protection class	IP22

SPOTTERS

& WELDING ACCESSORIES



QP1 DENT PULLER: YOUR PORTABLE SPOTTER

HIGH FREQUENCY INVERTER SPOTTER

The Car-O-Liner's **QP-1 Dent Puller** is a portable spotter that features a high-frequency inverter for rapid welding and pulling, thereby reducing repair times.

ALL-IN-ONE

The **QP-1 Dent Puller** provides a power source and slide hammer. It also offers a high-frequency inverter for rapid welding and pulling. Used in all repair jobs on car bodies to pull out and straighten dents, an indispensable tool for modern car body repairer.

SMART AND COMPACT

The dent puller is compact, contains a built-in ground rod with automatic contact, and requires a minimum paint removal area of only 20mm in diameter.

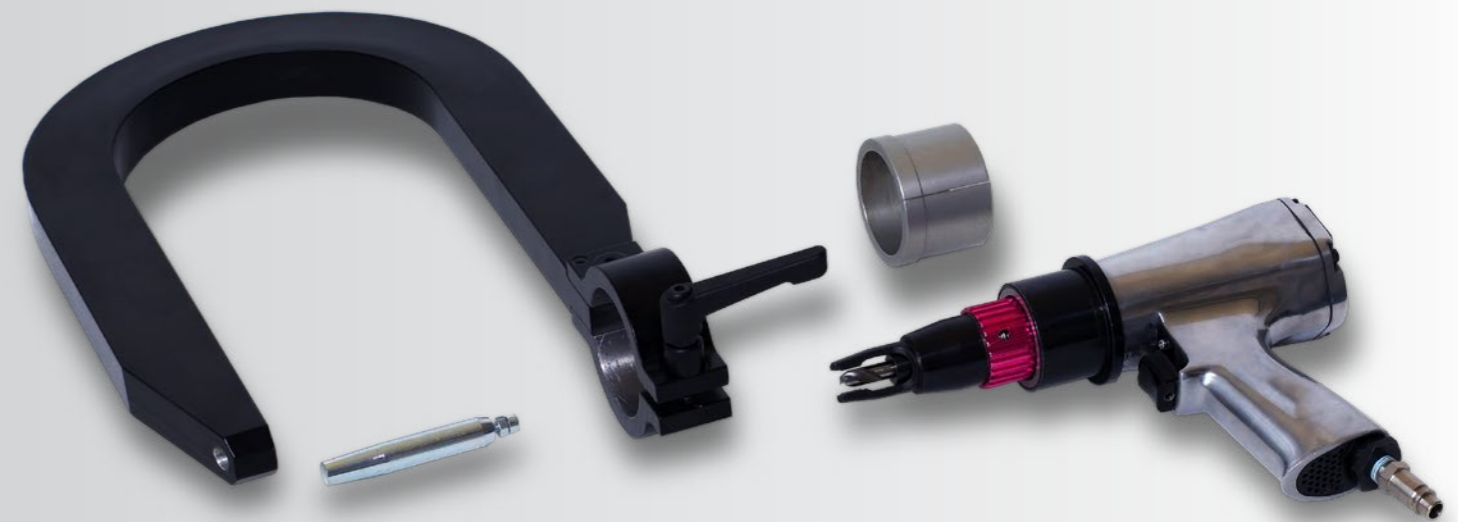
FEATURES AND BENEFITS

- **HIGH-PERFORMANCE**, pulls out dents on steel body panels with ease
- **PORTABLE & COMPACT**, offers mobility to technicians easily move around the workshop or take it on service calls
- **MINIMUM PAINT REMOVAL AREA**, only 20mm in diameter, smaller than the size of a quarter
- **BUILT IN GROUNDING ROD** with automatic contact makes this machine safe

QP1 DENT PULLER

Part No. 39638

CR35	
Input voltage	230V 50/60Hz
Input power	3.2kVA
Fuse (delayed action)	16A
Protection type	IP21S
Output voltage	7V
Dimensions (LxWxD)	420x180x110mm (16.5x7x4.4in)
Weight	2.9kg (6.5lbs)



SPOT DRILL: EASY DRILLING WITH AN AUTOMATIC SYSTEM

WITH REGULATED DEPTH

The depth can be easily regulated using the positioning ring and checked by moving the counter-stay backwards. With the yoke fitted, the drill moves automatically towards the spot welds when the trigger is depressed to the half-way position.

DRILLING

Drilling is carried out using even pressure down to the depth set. This unique automatic method makes drilling safe, and extends the working life of the drill and the yoke is easily removed when it hinders drilling.

ERGONOMICALLY DESIGNED

The drill is pistol-shaped and operated one-handed. The design provides a natural working position. A low vibration level minimises the risk of injury.

SPOT DRILL

Part No. 32686

SPOT DRILL	
Speed	1800RPM
Drill diameter	8mm
Air intake	1/4"
Working pressure	6,2 bar
Vibration level	0,27 m/sec (ISO8862 - 1)
Air consumption	230 liter/min
Weight	2,3 kg (5lbs)

SPARE PARTS

ITEM	PART. NO	QTY.
Adapter Kit Spot Drill	32948	1
>Bushing	32885	1
>Drill support	32886	1
Drill 45 × 8 mm	32863	5
Drill 45 × 10 mm	33276	1
Drill bits B.O.R 3/paket	33939	3
Drill bits HSS 5/paket	33940	5
Oil B.O.R	33941	1

WE CARE ABOUT BODY SHOPS

EXCELLENCE. INNOVATION. PASSION.

CAR-O-LINER ACADEMY

We are a competence development partner for the automotive industry, our main objective is to improve quality, safety and profitability for body shops.

THE TRAINING YOU NEED



RIGHT PERSON



RIGHT TIME



RIGHT COURSE



RIGHT COMPLEXITY

We enhance our customer's abilities by identifying the real competence and development needed. Offering solutions to meet these needs and accelerate the business growth.

WE OFFER THE SOLUTION



WE IMPLEMENT THE TRAINING



WE FIX THE ROOT OF THE PROBLEMS



WE MEASURE RESULTS

CUSTOMER SUPPORT

The Car-O-Liner Group headquarters is located in Gothenburg, Sweden, with subsidiaries located in Norway, Germany, France, United Kingdom, Italy, China, India, United States, Thailand and Middle East.

Wherever you are, Car-O-Liner can provide customer with product information, training, support or data subscription/renewal.

CHINA:

+86 10 6789 2123
info@car-o-liner.cn

FRANCE:

+33 1 69 52 7750
france@car-o-liner.net

GERMANY:

+49 (0) 6073 74487-0
info.germany@car-o-liner.se

INDIA:

+91 844 757 0029
info.india@car-o-liner.se

ITALY:

+39 059 468 310
info.carolineritalia@car-o-liner.se

MIDDLE EAST/AFRICA:

+971 6 566 8702
info@caroliner.ae

NORWAY:

+47 3343 0270
info@car-o-liner.no

SWEDEN:

+46 31 721 1050
info@car-o-liner.se

THAILAND:

+66 2 026 32 55
info.apac@car-o-liner.se

UNITED KINGDOM:

+44 1788 574 157
info@car-o-liner.co.uk

UNITED STATES:

1-800 521 9696
info@car-o-liner.com

FIND A DISTRIBUTOR NEAR YOU

Rely on our professional service teams in over 70 countries to define which Car-O-Liner product suits you best. Please visit our website: www.car-o-liner.com

CAR-O-LINER®

CAR-O-LINER®



www.car-o-liner.com



Car-O-Liner® (2018) is a trademark of Snap-on® Incorporated. All rights reserved.

Product images are for illustrative purposes only and may differ from the actual product. Car-O-Liner® reserves the right to modify any content without prior notice.