

TODD

Education

TODD ARCHITECTS + PLANNERS
TODDARCH.COM

Education



The methods by which our children are being taught and the ways in which they learn, have and continue to undergo considerable change. As designers our task therefore is not just simply to replace our outdated stock with new schools and colleges, but to assist in this transformation to new ways of learning. Our twenty first century learning environments must be flexible, inspiring, supportive and involving for their users and the wider community.

Evidence based research confirms that well designed schools improve the educational achievements of its pupils. Enhanced natural daylight in classrooms has been seen to result in faster progression in maths and reading tests. Improved environmental and space standards have lead to a noticeable improvement in child behaviour in elementary schools. Better designed playing and dining facilities significantly reduce the requirements for lunchtime supervisory staff.

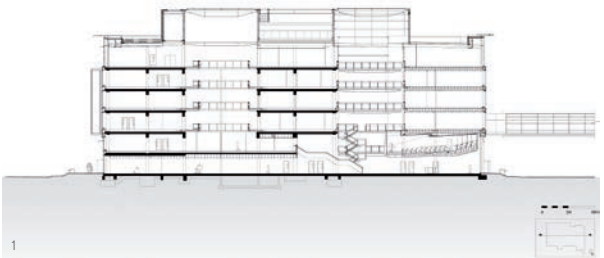
As relative newcomers to the sector, we have over the past twenty years, endeavoured to bring our design philosophy and innovative approach employed throughout other areas, into the designs we have produced within the education field. Typically working within strict brief, programming and cost restraints we seek to push beyond these boundaries, to produce inspiring learning environments. This often involves exploring the benefits of spaces 'in between' classrooms and lecture theatres, populating them with flexible furniture systems that allows their use for informal study and meeting.

We enter into each project without preconceived ideas, but rather endeavour to react to the particular ethos of the school, college or university, and to their particular context. Our solutions are therefore individually tailored, but underpinned by an ambition to produce architecture of the highest design quality.

We have developed a particular specialisation in recent years in the field of reconfiguring and retrofitting existing educational buildings from the 1960's and 1970's, recognising the inherent sustainability benefits in such an approach.



Education
(1) Belfast Campus, Ulster University, facade detail
(2) Belfast Campus, Ulster University, central atrium
(3) Belfast Campus, Ulster University, central atrium, ground floor
(4) Belfast Campus, Ulster University, link bridge

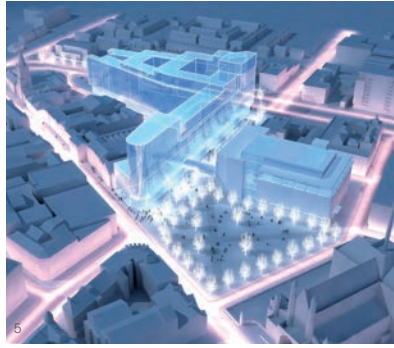




1



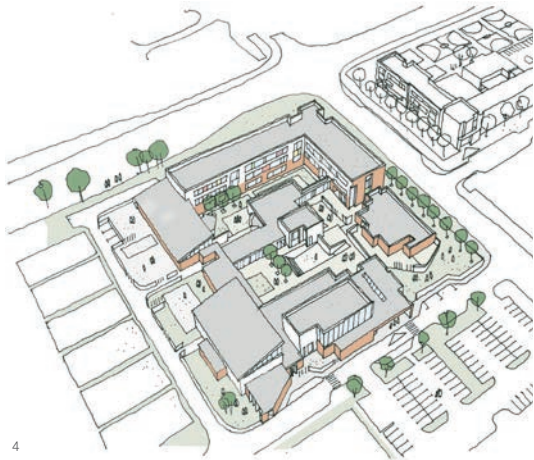
2



5



6



4



3



8



9



10

- Education**
- (1) School of Law, Queen's University Belfast
 - (2) Lanyon II, Student's Centre Competition Proposal, Queen's University Belfast
 - (3) Harshfield Educate Together National School, Dublin
 - (4) Harshfield Educate Together Secondary School, Dublin
 - (5) Greater Belfast Campus masterplan, Ulster University
 - (6) Ormsen Building, National University of Ireland, Galway
 - (7) Methodist College Belfast masterplan
 - (8) Shankill Road Library, Belfast
 - (9) Falls Road Library Belfast
 - (10) Working Men's College, Camden, London



Education
 (1) Belfast Metropolitan College, Titanic Quarter Campus, entrance
 (2) Belfast Metropolitan College, Titanic Quarter Campus, training Kitchen
 (3) Belfast Metropolitan College, Titanic Quarter Campus, courtyard

(4) Belfast Metropolitan College, Titanic Quarter Campus, entrance hall
 (5) Belfast Metropolitan College, Titanic Quarter Campus, hair salon

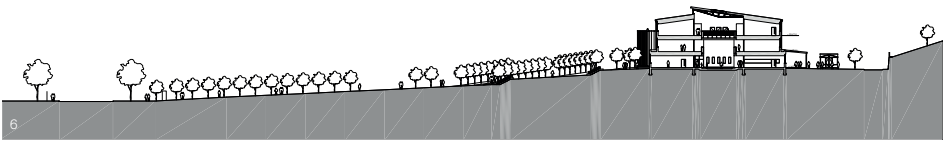
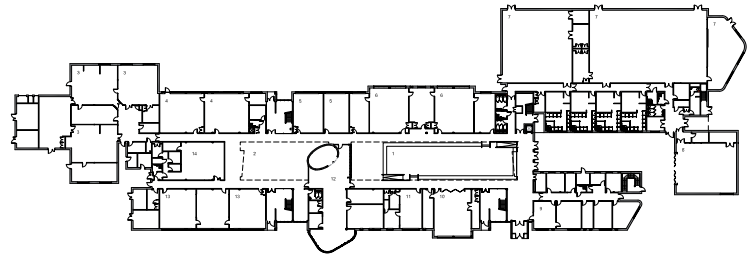


Education
(1) Student's Union, Queen's University Belfast
(2) MBC Teaching Centre, Queen's University Belfast
(3) Learning Resource Centre, Coleraine Campus, Ulster University
(4) Department of Architecture, Queen's University Belfast
(5) Rathmore Grammar School, Belfast

Education
 (1) Ashfield Girls' High School, Belfast, main approach
 (2) Ashfield Girls' High School, Belfast, entrance hall
 (3) Ashfield Girls' High School, Belfast, rear elevation detail
 (4) Ashfield Girls' High School, Belfast, atrium detail



(5) Ashfield Girls' High School, Belfast, multi-purpose area
 (6) Ashfield Girls' High School, Belfast, plan and site section
 (7) Ashfield Girls' High School, Belfast, front elevation
 (8) Ashfield Girls' High School, Belfast, central atrium





1



2



3



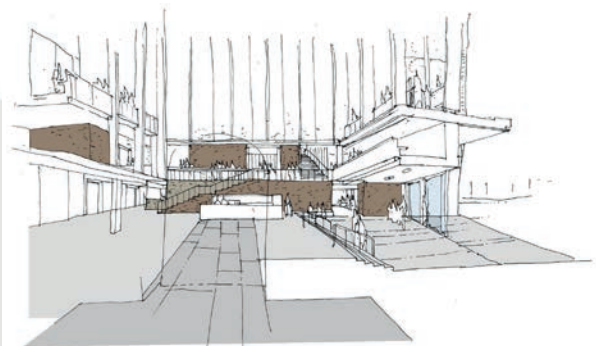
4



5



6



7

Education
 (1) Hillingdon Primary School, London
 (2) St Patrick's School, Cavan
 (3) Teaching Centre, Coletaine Campus, Ulster University

(4) Dundak Grammar School
 (5) Teaching Centre, Coletaine Campus, Ulster University
 (6) Belfast Central Library, Belfast
 (7) Belfast Central Library, Belfast

