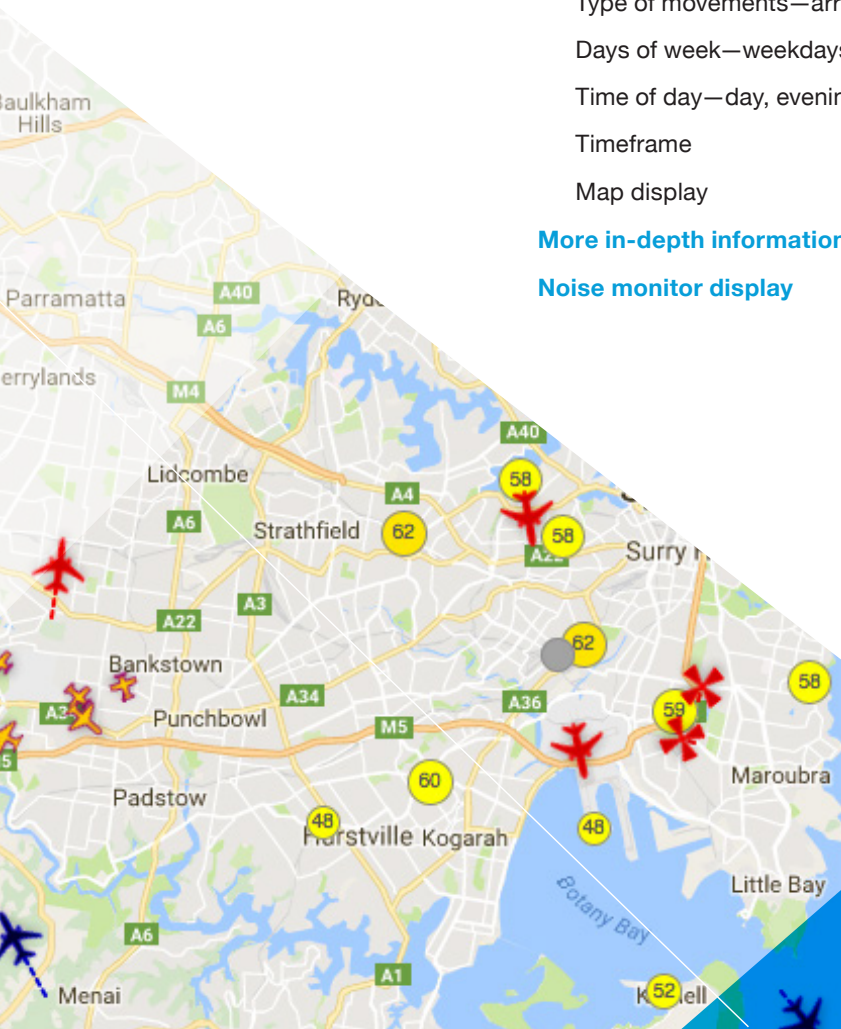


Guide to accessing historical trend information from

WEBTRAK

CONTENTS

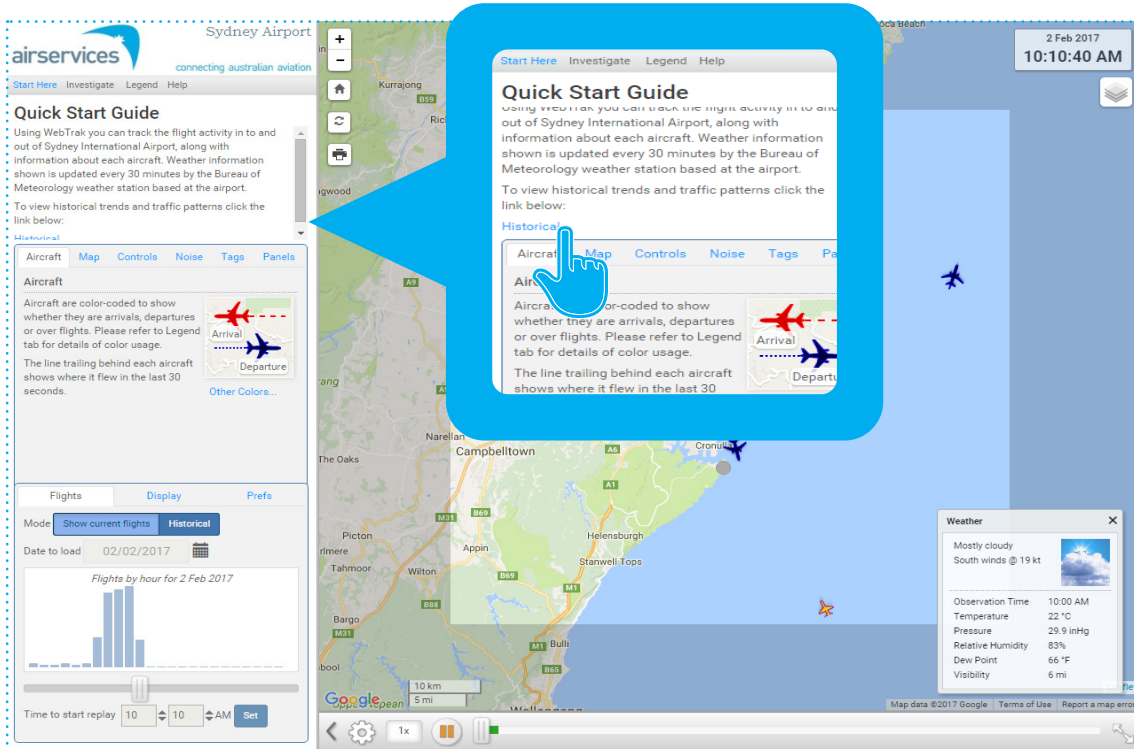
Launch WebTrak	1
Select the information you wish to access	2
Type of movements—arrivals, departures, training	2
Days of week—weekdays, weekend	2
Time of day—day, evening, night	2
Timeframe	3
Map display	4
More in-depth information about each flight path swathe	5
Noise monitor display	6



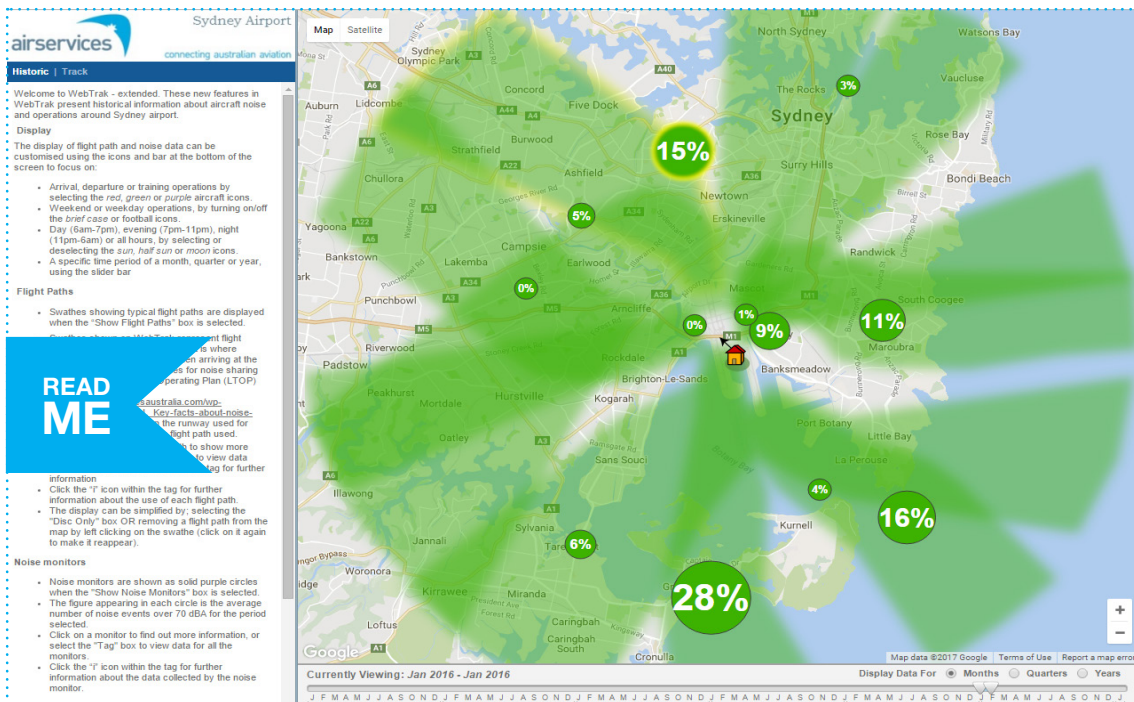
LAUNCH WEBTRAK

Launch the WebTrak location you want from this page: <http://www.airservicesaustralia.com/aircraftnoise/webtrak/>

The standard WebTrak screen appears. Go to the Quick Start Guide at the top left of the screen. Use the scroll bar to scroll down and reveal the Historical link below the text. Click this link.

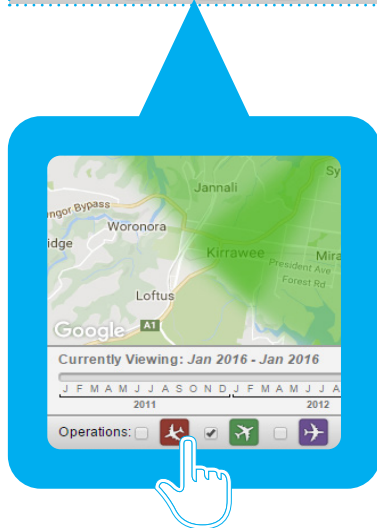
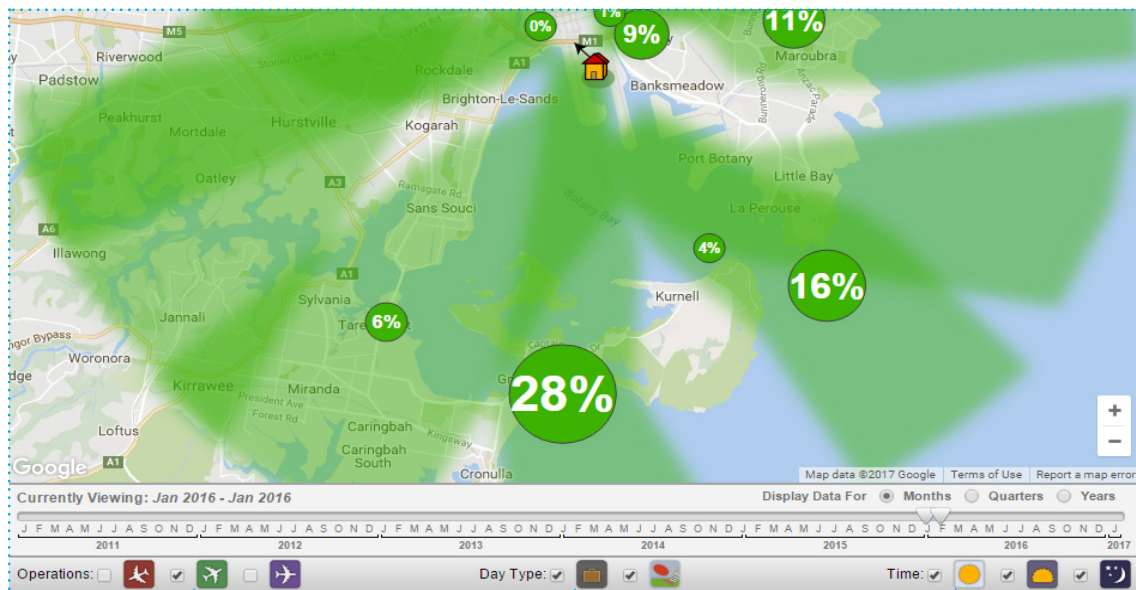


A new WebTrak screen will open in a new tab of your browser (the image below shows departure flight paths in green). Yours might open showing arrival flight paths in red). Read the information in the left-hand pane first.



SELECT THE INFORMATION YOU WISH TO ACCESS

Look at the bottom of the screen, below the map display:



Type of movements—arrivals, departures, training

Tick or untick one or more boxes to display:

- arrival flight paths—*red aircraft icon*
- departure flight paths—*green aircraft icon*
- training operations—*purple aircraft icon*



Days of week—weekdays, weekend

Tick or untick one or more boxes to display:

- weekday activity—*briefcase icon*
- weekend activity—*football icon*

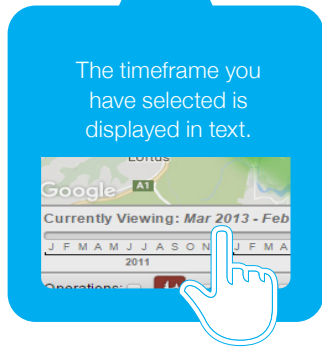
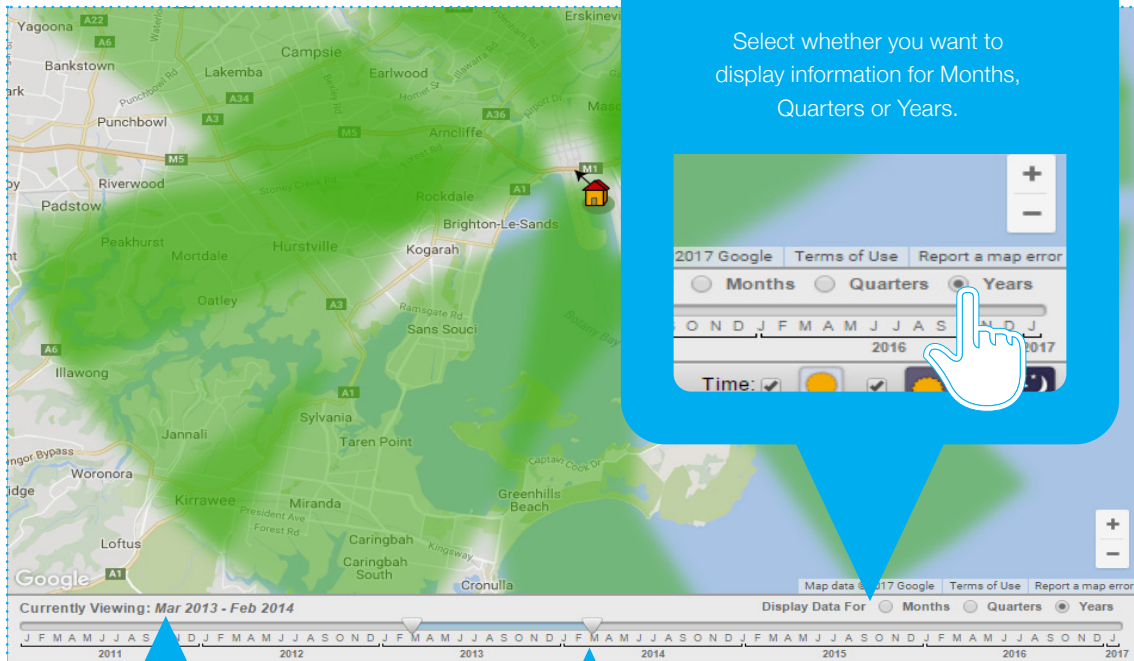


Time of day—day, evening, night

Tick or untick one or more boxes to display:

- day activity (6am to 7pm)
- evening activity (7pm to 11pm)
- night activity (11pm to 6am)

Timeframe



Map display

Now go to the left-hand pane of the screen. Scroll down underneath the text to the Select Layers to Show box (left). Your selections here control what is displayed on the map.

Show flight paths

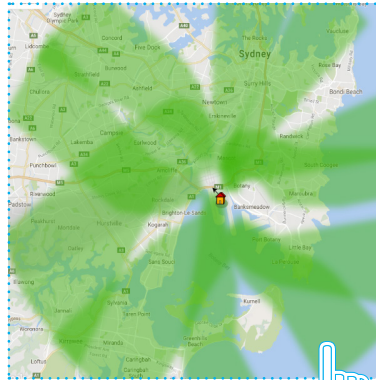
Select Layers to Show

Show Flight Paths Tags Disc Only

Show Noise Monitors Tags

Hourly trends for the number of noise events are available by ticking the "Tags" box. When the NE button is selected, the count includes all aircraft noise events. When the N65 button is checked the noise events are filtered to only include events 65dBA or greater, and when the N70 button is checked it only shows events of 70dBA or greater.

Event Types: N0 N65 N70



Tick Show Flight Paths to show flight path swathes.

On the map, click on a swathe to show its label.

If you want to remove a flight path swathe from the display, click on it twice. Click once more to make it reappear.

Tags

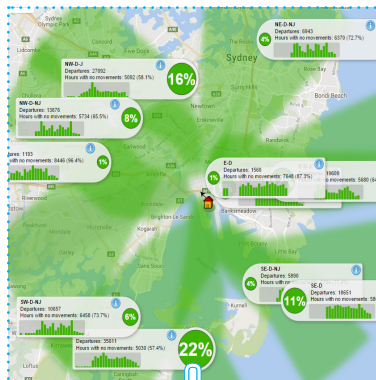
Select Layers to Show

Show Flight Paths Tags Disc Only

Show Noise Monitors Tags

Hourly trends for the number of noise events are available by ticking the "Tags" box. When the NE button is selected, the count includes all aircraft noise events. When the N65 button is checked the noise events are filtered to only include events 65dBA or greater, and when the N70 button is checked it only shows events of 70dBA or greater.

Event Types: N0 N65 N70



Tick Tags also to show the label for each swathe that is displayed on the map.

Hover over the label for more information.

Disc Only

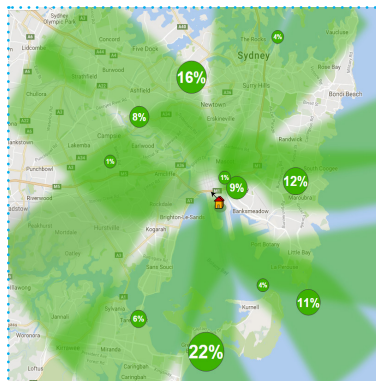
Select Layers to Show

Show Flight Paths Tags Disc Only

Show Noise Monitors Tags

Hourly trends for the number of noise events are available by ticking the "Tags" box. When the NE button is selected, the count includes all aircraft noise events. When the N65 button is checked the noise events are filtered to only include events 65dBA or greater, and when the N70 button is checked it only shows events of 70dBA or greater.

Event Types: N0 N65 N70

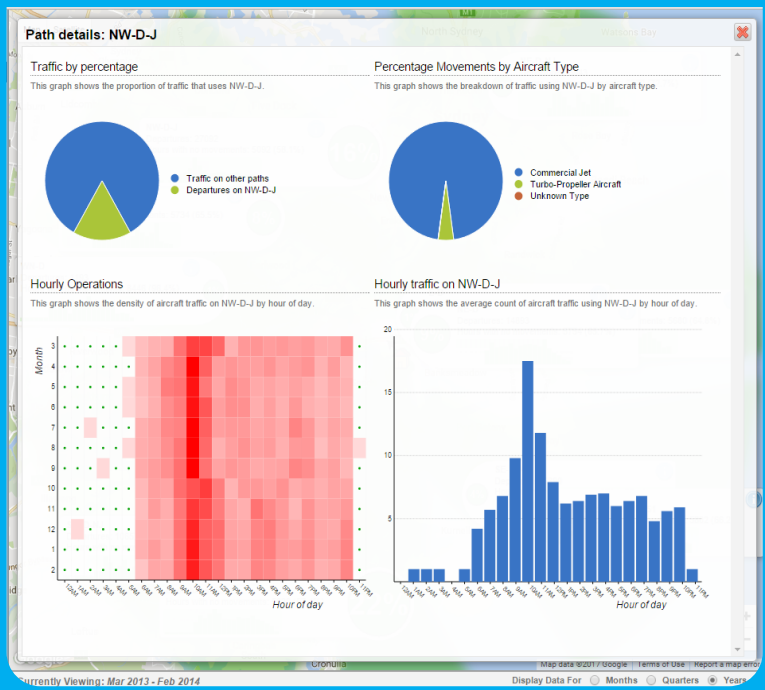


Tick Disc Only to hide the labels and just show the disc containing the percentage of time the flight path was used. This percentage will change depending on your previous selections about timeframe, day/night, weekday/ weekend.

If you are not seeing all the information you want, tick/untick the selections in the Select Layers to Show box until you are seeing the information you are interested in.

MORE IN-DEPTH INFORMATION ABOUT EACH FLIGHT PATH SWATHE

Click the blue (i) icon on the label of the swathe you are interested in to see more information.



The information displayed pertains to the selections you made earlier about timeframes, time of day, and days of week. Hover over the charts for more details.

While the charts are displayed you can change the timeframe, time of day and time of week as described before and see the chart information change too.

NOISE MONITOR DISPLAY

Displaying information about noise monitors works the same way as displaying information about flight path swathes.

Historic | Track

- A specific time period of a month, quarter or year, using the slider bar

Flight Paths

- Swathes showing typical flight paths are displayed when the "Show Flight Paths" box is selected.
- Swathes shown on WebTrak represent flight paths over the Sydney basin - that is where aircraft fly after taking off, or when arriving at the Airport. By contrast, the modes for noise sharing set out in the Long Term Operating Plan (LTOP) hyperlink to <http://www.airservicesaustralia.com/wp-content/uploads/2014/04/Key-facts-about-noise-sharing.pdf> are based on the runway used for take off and landing, not the flight path used.
- Click on the displayed flight path to show more information, or select the "Tag" box to view data about all flight paths. Hover over the tag for further information
- Click the "i" icon within the tag for further information about the use of each flight path.
- The display can be simplified by selecting the "Disc Only" box OR removing a flight path from the map by left clicking on the swathes (click on again to make it reappear).

Noise monitors

- Noise monitors are shown as solid purple circles when the "Show Noise Monitors" box is selected.
- The figure appearing in each circle is the average number of noise events over 70 dB(A) for the period selected.
- Click on a monitor to find out more information, or select the "Tag" box to view data for all the monitors.
- Click the "i" icon within the tag for further information about the data collected by the noise monitor.

Select Layers to Show

Show Flight Paths Tags Disc Only

Show Noise Monitors Tags

Early trends for the number of noise events are available by clicking the "Tags" box. When the "NE" button is selected, the count includes all aircraft noise events. When the "N65" button is checked the noise events are only include events 65dB(A) or greater, and when the "N70" button is checked it only shows events of 70dB(A) or greater.

Legend: N0 N65 N70

Contact Us

In the Select Layer to Show box, tick Noise Monitors and Tags to show these on the map. Hover over a label for more information.

Click the (i) icon on a label for more in-depth information.

NMT Details: Bexley

Noise monitoring terminals (NMT) are positioned around the airport and the airport community to collect information about the noise levels at those locations. The information below relates to your chosen NMT.

Hourly distribution by event level
This graph shows how events are distributed by dB level.

Hourly Events
This graph shows average distribution of events by hour of day.

Aircraft Event Levels
This table shows the top 15 aircraft types by event count and level.

Aircraft Type	Average Event Level	Total	Max/day	Min/day	Avg/day
B738	81.1	111	9	0	0.4
A321	80.8	2	1	0	0.1
A332	80.1	1	1	0	0
C590	79.2	1	1	0	0
E190	77.4	3	2	0	0.1
B712	77.2	1	1	0	0
A320	76.9	16	7	0	0.5
B736	75.4	1	1	0	0
A776	66.9	3	1	0	0.1
D9H	66.2	2	1	0	0.1
DP44	66	6	1	0	0.2

Hourly events
This graph shows event count by hour of day.