

NOTICE TO MARINERS No 6 - 2020

Dispersion study - Dalmore Distillery Outfall

Chart – BA1890

Lat 57 40.8N, Long 004 14.2W

On or about 15th February 2020, Anderson Marine Surveys Ltd will be deploying a seabed mounted ADCP (tidal current meter) for 15 days at the existing Dalmore Distillery outfall along with some Rhodamine WT dye dispersion studies being carried out at the end of the existing outfall.

The ADCP will be deployed in a seabed frame moored with a J mooring and marked on the surface by an unlit orange surface marker buoy.

A chart extract highlighting (red circle) the existing discharge point for the distillery is on the reverse of this notice.

Mariners are advised to navigate in the area with caution. Further information can be sought from Cromarty Firth Port Radio on 01349 852308 or VHF CH11.

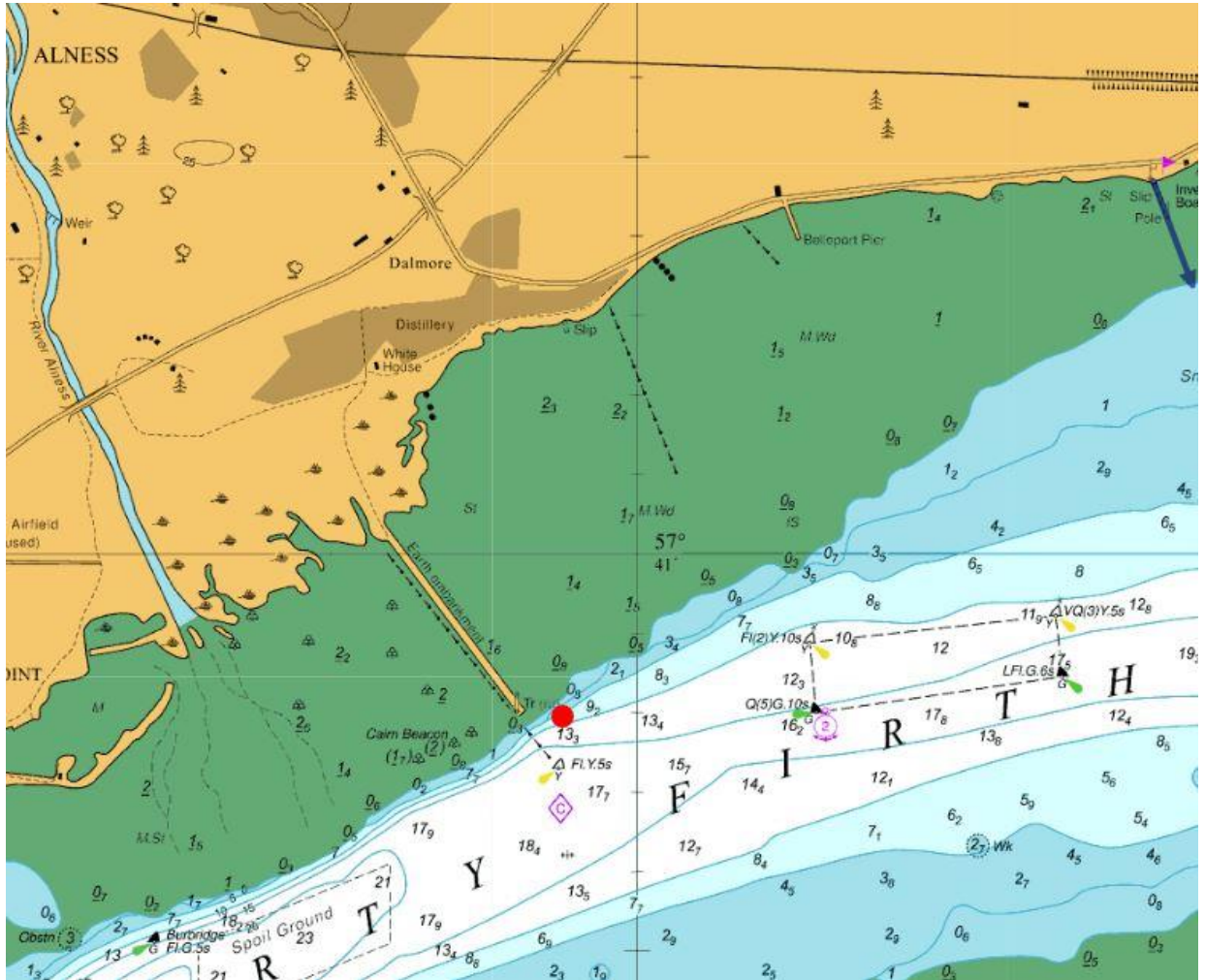
Graham Grant
Marine Support Manager

Port Office
Shore Road
Invergordon
IV18 0HD

Date 27th January 2020



PORT OF CROMARTY FIRTH



Port of Cromarty Firth, Port Office, Shore Road, Invergordon, IV18 0HD
T: 01349 852 308 E: cfpa@cfpa.co.uk www.cfpa.co.uk

Port of Cromarty Firth is the company trading name for Cromarty Firth Port Authority

