

Honeybourne Village News

March 2017



www.honeybourne.org.uk
50p in the shop

HONEYBOURNE POTTERY

Pottery activities for all ages & abilities

**Weekly Classes, Birthday Parties,
Holiday workshops, Schools & Education
Hen Parties, Youth Groups, Clay Imprints**

Contact Alan & Annabel on 01386 830410
www.honeybournepottery.co.uk
3 High Street, Honeybourne, WR11 7PQ

To advertise in the
Honeybourne Village News
please email
magazine@honeybourne.org.uk



Printing, photocopying
and scanning.

Booklets, leaflets, fliers,
invitations etc.

Black and white and colour.

Contact Claire on 07812 779854
Claire@poore-prints.co.uk

MWS Aerial & Satellite

Tel 01386 833342

- Freeview
- Freesat
- Radio and DAB
- Additional TV Points
- Additional Telephone Points

Free advice and quotations

CAI Member C. 1559
Member of the Worcester Trader
Register

www.mws-aerial-satellite.co.uk

email info@mws-aerial-satellite.co.uk



*Mobile Hair
and Beauty*

***Complete Salon-Style Service in
the comfort of your own home.***

***Fully qualified and experienced
hairdresser and beauty specialist.***

***Only professional products used
Wella L'Oreal Jessica etc.***

***Flexible appointments
and personal attention.***

Sue Williams 01386 832152

(Call anytime, but best time is 6 pm)

Letter from the Editor

Hello!

This month I am going to let Doug Rushton write a letter to you all:

"In the past few years the village has seen many changes and will continue to do so in the future.

There are residents of Honeybourne that feel the history of the village will be lost and forgotten. It is our intention to collect as much information from the past and bring it all together to keep in the new village hall and for some of the data to be buried in time capsules for future generations.

If you feel you can help in any way with either photographs or other items it would be greatly appreciated. All items will be acknowledged in the completed write-up. Everything will be returned once copied if you feel that any of the items are too precious to lend out, and you can even copy them yourself and all costs will be reimbursed.

The response has been good but we do need more information on the following: football teams, darts, cribbage, dominoes, films or photographs of village shows, sheep sale days and carnivals. We also need information on village organisations such as WI, Cubs, Beavers, Guides, Brownies and Rainbows.

Phil Boocock from "Friends of Old Honeybourne" has sent a bundle of items that were collected during his time in Honeybourne.

All items borrowed will be returned and receipts for payments of items copied will be reimbursed.

Yours Sincerely,

*Doug Rushton, 76 Stratford Road
douglas.rushton46@yahoo.co.uk
01386 832274"*

Thank you to the small army of paperboys and girls who are delivering this magazine now that the Journal has stopped. Please be patient as they have large rounds and by and large they have school and work to contend with. It is my intention that the Honeybourne Village News will be delivered on the last weekend of the month.

To include something in the village magazine, please email

magazine@honeybourne.org.uk

As always, village news and events are publicised on the Honeybourne website, which is

www.honeybourne.org.uk

And digital copies of the magazine can be downloaded from there too.

Claire Poore, Editor,
magazine@honeybourne.org.uk - 01386 832800 - 47, School Street
www.honeybourne.org.uk

The last date for articles for the April magazine is 18th March.

**ARE YOU NEW TO THE VILLAGE?
ARE YOU 60 OR OVER?
IF SO WOULD YOU LIKE TO COME AND JOIN THE
WEDNESDAY CLUB?
WE MEET THE FIRST WEDNESDAY OF EACH MONTH
AT 2.30PM IN THE VILLAGE HALL
WE WILL MAKE YOU VERY WELCOME
WE HAVE A DIFFERENT SPEAKER AND TRIPS OUT
EACH MONTH.**

**Mobile Library Time Table:
Library visits on the 4th Friday of the month.**

Grove Avenue:	12.05 - 12.20	Lower Westbourne:	12.25 - 12.40
Perrie Drive:	12.45 - 1.00	Weston Road:	1.05 - 1.15
	LUNCH	Village Hall:	1.45 - 2.00

CPB PLASTERING
All aspects of plastering work:
Boarding, skimming,
rendering, screeding
Call CARL BENFIELD
Tel 01386 831673 or
07717 201 950
email c-benfield@sky.com

Cotswold Foot Clinic

Dedicated to the care of your feet

Est. 2008



A member of
The Alliance of
Private Sector
Practitioners and
registered on their
Accredited Register,
accredited by
the Professional
Standards Authority

Carole Graves DipCFHP MPSPract
Foot Health Practitioner

Treatments include:

Corn removal
Callus reduction
Nail trimming
Foot massage

Diabetic foot care
Verruca treatment
Fungal infection



Tel: 01386 834737

Email: cotswoldfootclinic@btinternet.com

PERSONAL WELLNESS COACH

BACKGROUND:

- Bachelor of Sport Science, Exercise and Health
- Honours in Exercise Rehabilitation
- Accredited Exercise Physiologist
- Lecturer in Exercise Physiology
- *Trained American Olympic ski team



FEEL GOOD

ONE ON ONE SESSIONS
GROUP TRAINING
SPORT/EVENT TRAINING

SPECIALISING IN;

- Weight loss and wellness
- Health and lifestyle management.
- Chronic disease management - arthritis, diabetes, osteoporosis and coronary heart disease.
- Matching your workout and diet to your body, lifestyle and goals.
- Injury management
- Specific programs for sport specific such as tennis and skiing.
- Goal setting and fun run preparation
- Optional training in the comfort of your own home.

GROUP CLASSES
BEGIN MONDAY-
March 27th Village
Hall

- Living Longer and Stronger - Evidence based training progressive strength training and exercise specifically designed for the over 50s. Scheduled 12.30pm
- Happy fit mums- Welcome to bring babies/toddlers along or come without. 1.30- 2.30 pm
Pick older kids up afterwards

CONTACT CLAIRE - 07554 192 487

For more information and to reserve a place in the class.

HONEYBOURNE PARISH COUNCIL

Honeybourne Neighbourhood Development Plan

The progress report for the NDP group meeting held on 18th January was circulated at the council meeting and members expressed their disappointment at the lack of support from parishioner as only three attended the meeting. It was said at the meeting “when the developers come to build just what and where they like in the parish don’t come to the council and complain, it will be too late”

The meeting report is posted on the Parish Council’s website under Parish Plans.

New Councillor Co-opted

At the February meeting Mr Christopher Farmer of Fallow Field Honeybourne was co-opted onto the council making the membership up to 10 leaving one vacancy. Anyone interested in joining the council should contact the Clerk.

Cricket Wicket for the Recreation Field

A feasibility study confirmed a cricket wicket could be permanently installed in a central site on the Recreation Field and leave adequate space for a senior football pitch and junior pitches if required. The council are seeking quotations to carry out the required engineering works to permanently install the mat on a mineral base. The quotations and affordability of the scheme will be considered at the next council meeting.

Football Pitch:

After consideration of the needs to have local teams affiliated to the FA and the very short time scale involved to instigate this, it was agreed to suspend any football considerations for a full year to allow the condition of the grass to improve and be suitable for regular team use and the pavilion building to be completed.

Bovis Homes Issues:

Bovis Homes request for a response to flooding and fencing matters. It was confirmed that the fencing issue off Harvard Avenue has been resolved with a new fence and bollard installed. As no correspondence has been received on the flooding matter further attempts were made to get a response. A different manager from Bovis Homes has now responded and a site visit has been requested to discuss the sites flooding issues and other matters before the site work is finished and the site is signed off by the WDC planning officers.

Village Hall Site Valuation

The Village Hall committee has requested the Parish Council to engage an Architect for the old Village Hall site’s detailed planning application. As the council had previously agreed to sponsor the architectural fees for the Village Hall site the circumstances have now changed as the site is now in the village conservation area which requires a fully detailed planning application instead of an outline application making the architectural fees very excessive in comparison to the original agreement. Cllr Heath Jobes, the council’s Village Hall delegate, informed the council that the potential funding from the Big Lottery is very time limited, therefore a valuation of the site is needed as soon as

possible for the funding application for the new Community Centre. In consideration of this, the council's proposal to the Village Hall committee is that an option to obtain two or three site valuations from estate agents would be more beneficial and could be achieved quickly without the need for un-necessary expense of approximately £4,000 for a detailed planning application which a potential developer may not accept.

The Parish Council meets on the 2nd Tuesday of each month. Members of the public are welcome to attend meetings, which are held in the Village Hall and commence at 7.15 pm. Residents are welcome to speak on any issue of local concern during the Open Forum before the start of the meeting.

Clerk John Stedman

1, Ban Brook Road, Salford Priors, Evesham, Worcs, WR11 8XE Tel 01789 773999:

E-mail: j-stedman@btconnect.com

The Parish Office is open generally all day 10.00 am to 6.00 pm including weekends for all parish enquiries. Email is my preferred communication but my telephone is manned almost all day. The answer phone is on, but please ensure you state your business is with Honeybourne as my phone serves other Councils and my own business.

For up to Date Council information Visit www.worcestershire.gov.uk/MyParish and then link to Honeybourne

Please remember to clear up after your dog, especially on The Leys and other places children play.

The Future for Honeybourne

Important discussions are underway concerning the future for Honeybourne.

Everybody is welcome to get involved because the outcomes will affect you.

Please come to listen and contribute to discussions about how Honeybourne might be developed in the years to come.

Meetings are held at The Gate Inn at 7.30pm:

22nd March

19th April

17th May



HONEYBOURNE RAILWAY CLUB

Brick Walk, Honeybourne, Evesham, Worcestershire, WR11 5PG
Tel No. 07506 729887

Hello from the club!

Well March falls upon us and as announced memberships are due for renewal. Please renew between 1st and 31st March – leave your subs (single £6 and family £12) at the bar. You need to fill in a form to update your personal information as details tend to change with time. We will NOT display this information in public nor give it to any third parties: it is purely for Club regulations and Licencing laws.

Bingo nights are every Friday and some Saturdays at 8pm.

On Saturday 25th the Club are holding a prize bingo for Help for Heroes on behalf of Jackie Jeffries who will be running the Northern Marathon in September for this cause. She needs £375 to enter, and sponsorship forms are available. Please text my number or find Jackie on facebook. She is hoping to raise a magic £1000 for the Heroes.

Saturday March 11th sees Grif performing at the Club – country, pop, Eagles, swing music at 8.30pm onwards. My albums 3 and 4 are now complete and I have 40 of each to sell at £4.99 for the Air Ambulance.

Album 3 – 25 songs. Released February 13th

Three Times A Lady | All In The Fame | Bridge Over Troubled Water | What Becomes Of The Broken Hearted? | Cross My Heart | Cryin' In The Chapel | Do You Want To Know A Secret? | Don't Throw Your Love Away | Everybody Knows | Stand By Me | Help Me Make It Through The Night | If I Only Had Time | Imagine | Just Can't Help Believing | Lucelle | It's Now Or Never | Out Of Time | Calendar Girl | Roses Are Red | Spanish Eyes | The Next Time | True Love Ways | Wooden Heart | Young Girl | Runaround Sue

Album 4 – 26 songs. Released February 13th

Love Is All Around | You're More Than A Number | Can't Smile Without You | Que Sera Sera | Blue Suede Shoes | Bye Bye Love | Cryin' In The Rain | Don't Be Cruel | Good Luck Charm | Can't Take My Eyes Off You | I Saw Her Standing There | I Wanna Hold Your Hand | I'm A Believer | Hey Jude | Let It Be | Hello Mary Lou | Needles And Pins | I'll Never Find Another You | Shakin' All Over | Like Sister And Brother | Story Of My Life | Tower Of Strength | Twistin' The Night Away | Vincent | When I Need You | When

Thank you, Sam Boulter.



HONEYBOURNE VILLAGE
HALL
ANNUAL GENERAL
MEETING
TUESDAY 28TH MARCH AT
7.30PM

You are invited to come along to the Village Hall AGM on Tuesday 28th March.

This is a chance for you to:

- Find out about the progress on the new Community Centre
- Contribute towards the running of a vital Village amenity
- Get involved in your Community

We would love to see you there!

For more information ring Rita on 01386 640696 or email honeybournecommunitycentre@yahoo.co.uk

Tomlins

Funeral Directors

- 24 Hour Service
- Pre-payment Plans - Fully Guaranteed
- Private Chapels of Rest
- Monumental Masonry
- Modern Jaguar fleet

60 Years of combined staff service to the community

36-37 The Leys, Bengeworth, Evesham

Tel: 01386 765 133

www.tomlinsoftheleys.co.uk



DAVID BAKER

FUNERAL DIRECTORS

- 24 hr Caring Service
- Monumental Stone-masons
- Fully Guaranteed Pre Payment Plans

98 High Street, Bidford-on-Avon

01789 773482

Your Local Funeral Director
Serving the community for over 20 years

www.mylocalfuneraldirector.co.uk



BED & BREAKFAST AT POTTER'S COTTAGE, HONEYBOURNE

~ Double en-suite room £68 per night

~ Twin en-suite room £58 per night

~ Entire cottage £110 per night

Contact Alan & Annabel on 01386 830410
honeybournepottery.co.uk/bed-and-breakfast
3 High Street, Honeybourne, WR11 7PQ

LADIES!

Walking Keeps You Fit.

Join our walking group and make new friends.

**We do a 2 mile walk on Monday, Wednesday and
Friday mornings.**

For more information call Ann on 01386 830517

We look forward to seeing you.

RWH Accountancy Limited

Personal Tax Returns.....*From £ 95*

Sole Trade Accounts.....*From £ 295*

Company Accounts.....*From £ 495*

Other Services: Company Formations, VAT Returns, Bookkeeping, Payroll

Contact Richard: 07823 889711 – richard@rwhaccountancy.co.uk

Corrine's Cleaning Service

- Office cleaning
- General cleaning & tidying
- Laundry & ironing
- light housework
- CRB Checked
- Competitive rates

Call: 07731 866 445 or

Email: corrine.page2@googlemail.com



John Betts
Property maintenance
General repairs
Brickwork / stonework
Patios / repointing
Painting / roofing
Fences / storm damage
25 years' experience
No job to small
For a free quote
Phone Offenham
01386761379
mob 07415144926

Thenailandbeautyroom

Salon professionalism without salon prices



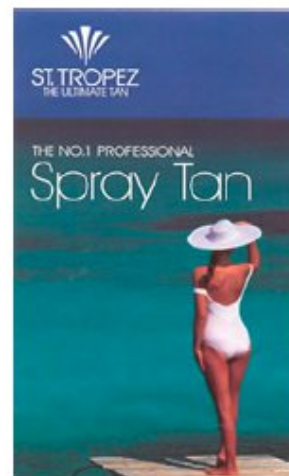
Rose English MGBT

Nail Technician, Professional spray tanning & Beauty therapist



Treatments

ST TROPEZ spray tan
Calgel nails
Clarins facials
Manicures & pedicures
Reflexology
Aromatherapy
Waxing



01386 833842 or 07900876406

Evening appointments available

BRETFORTON GARDEN CLUB

On Thursday 2nd February, the AGM of Bretforton Garden Club took place. Three new members were elected to the Committee and the success of the club during 2016 was outlined in reports from the Secretary and Treasurer. It was noted that the Open Gardens event in June had been a great success and members had enjoyed an interesting and entertaining programme of speakers and visits during the year.

The AGM was followed by a Gardener's Question Time with a panel of horticultural experts lead by the Club's Past Chairman Jon Heath and joined by Vicky Cody, Head Gardener at Snowhill Manor and Ed Brown from "Just Must Perennials".

There was a wide range of questions from the audience including creating all year round Hanging Baskets to compost advice and ways to protect plants from slugs and snails – adopt a hedgehog.

The next meeting of the Club will be on Thursday 2nd March at 7.30pm at Bretforton Memorial Hall when Julia Scott, owner of The Walled Garden in Worcester, will be speaking about Biodynamic Gardening and Growing and Using Herbs.

New members and visitors are very welcome to meetings which are usually held on the first Thursday evening of the month starting at 7.30pm at Bretforton Memorial Hall. We have members from surrounding villages including quite a few members from Honeybourne so if you enjoy gardening or want to widen your knowledge in friendly surroundings why not come along and join us. For more information please go to our website www.bretforton-gardenclub.co.uk or contact Barbara Jenman on 01789 720514.

Barbara Jenman
Secretary, Bretforton Garden Club

The Wednesday Club

The monthly meeting of the Honeybourne Wednesday club took place on February the 1st.....sorry about the wrong date in the last newsletter...senior moment.

Instead of the usual meeting at the village hall members enjoyed a very enjoyable lunch at the Plough and Harrow Drakes Broughton. Afterwards all members were entered into the big raffle which meant we all went home with an interesting gift.

At the dinner Anne handed out lists of proposed trips for 2017. It looks as if we are in for some good days out.

The next meeting on March 1st will be the A.G.M. after which Val will demonstrate making boxes. A pair of scissors would be useful to bring.

Ironing and Laundry Service

Reliable, top quality service

£12 per hour

Collected and delivered

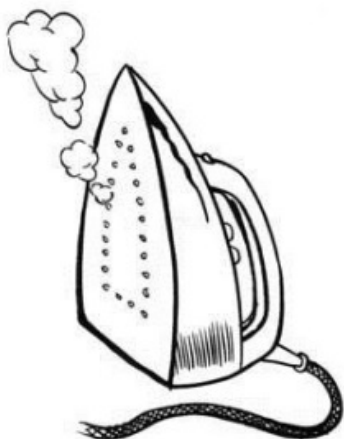
References available

Phone

BEVERLEY

01386 831824

07779 103071



K925 Pet Services

- Dog walking
- Pet visits
- House sitting
- Fully Insured
- Disclosure checked
- References available

Covering Bretforton,
Honeybourne and
surrounding areas

Call Jo: 07912 160131

jo@K925petservices.co.uk
www.K925petservices.co.uk



facebook
Find us on Facebook



Evesham Funeral Service

Independent Family Funeral Directors

01386 389585

Craig is available 24 hours a day.
Please call for any assistance.



Golden Charter
Funeral Plans



EveshamFuneralService.co.uk

"Thank you for providing such a good service."

*Hannah Jones,
Customer's Daughter,
Bluebird Care
Worcester & Wychavon*



Bluebird Care Care in your home

We provide flexible and bespoke homecare and support services from 30 minute visits to 24 hour live in care.

Call us or email us today on worcesterandwychavon@bluebirdcare.co.uk.

Call today to
find out more

01386 764 830

bluebirdcare.co.uk/worcester-wychavon



www.indulgenceskincare.co.uk



Indulgence Skin Care & Beauty
Honeybourne

**25% off your 1st
appointment**

Call fallon on 07814048166

J
JESSICA

Sienna
PROFESSIONAL SMOKEY TAIL

dermalogica[®]

a skin care system researched and developed by The International Dermal Institute

Letter from the Curate

Dear Friends,

With winter now behind us this year, we can look forward to March winds, April showers and misty May mornings! The fresh green shoots of growth, which have been dormant during the winter months, will soon appear. March is a transition month in terms of the weather. But it is also a transition month for Christians. We turn away from thoughts of Jesus as that tiny baby in a manger at Christmas and turn towards thoughts of Jesus the man and his life-changing actions on that first Easter Day. Christians devote time to prepare and reflect on the great events of that first Easter Day through a time of preparation known as Lent. Lent can be looked at as a kind of spring cleaning of our souls and our spiritual lives. We believe that it is in spending time in reflection and a more disciplined life of prayer and practical action that we can become people who reflect the glorious colour and light which we see in the person of Jesus Christ.

In the same way that spring cleaning our houses does away with accumulated dirt, dust and unwanted rubbish to make our homes warm and welcoming for our families and friends, so too does the clearing out of the accumulated dirt and rubbish in our minds help us to make space for God in our lives. So-called Lenten disciplines are varied. Giving things up – perhaps the chocolate or the glass of wine or the little luxuries we enjoy – or taking things up – perhaps making that regular 'phone call to a lonely relative or popping in to see a neighbour who is bereaved or housebound - these are things which prompt us to think more carefully about what life means and how we can become the loving, compassionate human beings which God intended us to be. And we make an extra effort to study a part of the Bible too. If you are curious about what the scriptures hold, you are welcome to come along to a weekly gathering at Weston bowling club on any Wednesday evening in March from 7.30 to 9pm. We will read and discuss a book called the The Joy of the Gospel by Paula Gooder. Look it up on the internet to find out more about it or give me a ring if you are interested in joining us.

Through our reflections in Lent, we will be better prepared to celebrate the greatest Christian festival of all - Easter Sunday. Do come and explore what it is about Jesus that has inspired so many people over the centuries and perhaps find out for yourselves why Christianity is still a huge force for good in the world. And if that doesn't appeal, you only have to stop and look around you in the next few weeks and watch and enjoy the wonders of creation as we see new life blossom around us in our gardens, fields and hedgerows. Happy watching!

With love and blessings.

Celia.

Assistant Curate. Vale and Cotswold Edge Team Ministry.

Our contact details are:

Revd. Craig Bishop (Team Rector): admin@stjameschurchcampden.co.uk Tel. 01386 841927

Revd. Celia Woodruff: celia.woodruff1@gmail.com

Tel. 07807 899119

Revd. Dana Delap (Vicar of Blockley & Bourton on the Hill) dana@delap.org.uk Tel. 01386 700676

Honeybourne Village Hall are compiling photographs to display in the future under the title "Honeybourne in the Past".

If you have any photos or memorabilia which you think would be of interest, could you phone Doug Rushton on 01386 832274.

All photos will have the recipient's name acknowledged on the display if they so wish.

Would you like to cycle but you don't own a bike?

Would you like to cycle but lack confidence?

Would you like to ride on the back of a tandem?

Then H-BUG (Honeybourne Bicycle Users Group) is able to help you.

H-BUG has access to a number of bikes that can be borrowed for H-BUG cycle rides.

There are no costs, and membership of H-BUG is entirely free.

Bikes can be booked in advance by texting request to 07971 989 430

Interested in hiring the Village Hall?

Go to our website www.honeybournevillagehall.org and click on bookings, or ring Rita on 01386 640696 about regular bookings and Sylvia on 01386 832215 about one-off events

Weddings • Occasions • Corporate Lunches

Fiesta Cakes & Caterers

~ OF WICKHAMFORD ~



AWARD WINNING

PARTY CATERING

- Special Event Catering
- Hot & Cold Buffets by Award Winning Chef
- Event Co-ordinator & Waiting Staff
- Decorative Balloons & Marquees Available
- Outside Bar & Pig Roasts
- Photo Image Cakes
- Food Hygiene Rating 4 Star
- All Produce Locally Sourced
- Open 7 Days a week • Free Quotations

OAP GROUP
LUNCHES
FISH & CHIP
CLUB
SUNDAY
LUNCH CLUB

FOR A HELPFUL, EFFICIENT AND COST EFFECTIVE SERVICE

tel: **01386 834183**

email: fiestacaterers@btconnect.com

~ TO VIEW OUR GALLERY VISIT ~

www.fiestacatererswickhamford.co.uk

March 2017

	Pebworth	Dorsington	Honeybourne	Willersey	Weston sub Edge	Aston sub Edge
1st March Ash Wednesday	7.30 pm Benefice Service at Honeybourne					
5th March Lent 1	11.00 am Eucharist		9.00 am BCP Holy Communion	9.30 am BCP Holy Communion	11.00 am Eucharist	6.30 pm Evensong
12th March Lent 2	10.00 am Family Praise	11.00 am Eucharist	4.00 pm Evensong	9.30 am Eucharist		6.30 pm Evensong
19th March Lent 3	9.00 am Eucharist		11.00 am Eucharist	9.30 am Eucharist	9.30 am Eucharist	6.30 pm BCP Holy Communion
26th March Lent 4 Mothering Sunday	6.00 pm Evensong	11.00 am Eucharist	4.00 pm Evensong	11.00 am Family Service		6.30 pm Evensong
2nd April Lent 5/Passion Sunday	11.00 am Eucharist		9.00 am BCP Holy Communion	9.30 am BCP Holy Communion	11.00 am Eucharist	6.30 pm Evensong

Special Church Dates for 2017-8

Christian Aid Week: 14th – 20th May

Summer Fayre: Saturday 6th May - 2.00 pm at the Village Hall

Harvest Supper: Saturday 7th October – 7.00 pm at the Village Hall

Harvest Festival: Sunday 15th October - at the 11.00 am Eucharist

Christmas Fayre: Saturday 25th November - 2.00 pm at the Village Hall

PCC Meetings:

Tuesday 14th March, 7.00 pm

Tuesday 2nd May, 7.00 pm

Tuesday 18th July, 7.00 pm

Tuesday 26th September, 7.00 pm

Tuesday 14th November, 7.00 pm

Tuesday 16th January 2018, 7.00 pm

Tuesday 13th March 2018, 7.00 pm

Annual Parochial Church Meeting 2017: Sunday 23rd April, 7.00 pm after Evensong

A 3.4-Mile Walk to The Heart of England Forest

Before starting this walk you must first register with Dorsington Farms (01789 491 391) to use their Permissive Footpath.

Sturdy shoes or boots are recommended.

The walk starts at The Gate Inn. Turn left from the Gate Inn, passing the car park before reaching the footpath on the left to the Church. Follow this path through two fields and into the churchyard. Keep to the left-hand edge and exit at the kissing gate. Follow the road round to the right until you arrive at the T-junction at the cemetery. Opposite you will see a stile near to the cemetery fence. Over this stile and another stile into the main field where you will follow the hedge on your left-hand side until you arrive at the stile on the Mickleton Road. TAKE GREAT CARE when crossing this road; then over the stile into the next field. Walk towards the far left-hand corner of this field. Over another stile and out onto Stratford Road. Turn right and TAKE GREAT CARE when walking (facing the oncoming traffic) under two railway bridges.

Immediately after the second bridge turn right onto the bridleway. Pass by the cattle grid and follow the tarmac surface to a large field gate by the house. Through this gate, along the track, and up the gentle gradient to the top of the hill. The top field is expected to be planted as woodland, with wide rides to protect the views of Pebworth and Meon Hill. When you arrive at the signpost at the top of the hill, turn around to admire the view – a lovely spot for a picnic (but remember to take your litter home with you!). You will see Honeybourne church below, and sweeping views including (from the left) Cutsdean Hill (305 m high), Oxenton Hill (223m), Dumbleton Hill (168m), Forest of Dean (up to 290m) with the Black Mountains (up to 886 m) behind, Bredon Hill (299 m) and the Malvern Hills (up to 425 m high).

If you follow the footpath sign along the top of the hill with the hedge on your left, you will pass through two large fields before arriving at the Pebworth Road near the top of Baylis' Hill. TAKE GREAT CARE to cross this road and pass through the steel field-gate into the next field. You are now entering The Heart of England Forest with permissive use only for this walk. Follow the stone track through this field towards the left-hand corner where you will see the footpath sign. Turn right and walk with the hedge on your left – noting the view of Meon Hill to your right - until you arrive at a steel gate. Do not pass through this gate. Turn left into the next field and follow the track downhill through the plantation of young trees, passing through the marsh grass until you rejoin the stone path near the large steel padlocked gates. Facing the gate, turn left and walk in the direction of the pylon on top of the hill, and follow the path to the right of the pylon. Continue to follow this path as it meanders uphill towards the next pylons, and then pass through the steel gate between the pylon and telegraph pole. Please shut the gate behind you as you leave the forest. Please remember that you have been on private land - this is not a public right of way - with the kind permission of the Dorsington Estate.

Turn right and follow the path downhill with the wire fencing on your right. Keep the hedging on your left as you continue downhill through the open field. Over the stile and across the field in an eleven o'clock direction to the next stile, and into the next field. Walk straight ahead to the stile at Buckle Street. TAKE GREAT CARE to cross the road, turn left and walk facing the traffic over the railway bridge. Follow the road back to the Gate Inn passing the Ranch Caravan Park and All Things Wild.

We hope you have enjoyed your walk today, and that we have whetted your appetite for a variety of future walks during 2017* using the Public Rights of Way (PROWs) in the Parish of Honeybourne.

Email steve@stephenbullen.com for copies of any walks, to express concerns, or seek advice on how to best enjoy Honeybourne's PROWs.

COME AND JOIN US!



HONEYBEES W.I.

7:30 p.m on Monday 20th March

At Honeybourne Village Hall, Bretforton Road, Honeybourne

Speaker: Sue Sollis

'The Tracy Sollis Leukaemia Trust'

Competition: Something beginning with S

Find out more on :-

Facebook honeybeeswi.

www.honeybeeswi.wordpress.com

or if you want to contact Honeybees W.I

honeybeeswi@gmail.com

You will be made to feel very welcome

Please note that everyone within the village of Honeybourne should receive the Honeybourne Village News on the last weekend of the month. The magazine is available TO PURCHASE from the village shop: Please do not just take a copy as it costs both the shop and the magazine itself money. They cost 50p and taking without paying is stealing.

Rotas for Services – Honeybourne – March 2017

**Due to the change in the benefice please check all times/venues during month
with notice board**

SERVICE	SIDESMAN	READER	INTERCESSOR	FLOWERS	CLEANING ROTA
Sun March 5th 9.00am Communion <i>Lent 1</i>	S Matthews M Merrett	M Merrett	Minister	Lent	T Banks
Sun March 12th 4.00pm Evensong <i>Lent 2</i>	T Banks	T Banks	Minister	Lent	S Matthews D Griffiths
Sun March 19th 11.00am Communion <i>Lent 3</i>	M Miller M Edwards	M Miller	M Miller	Lent	M Miller
Sun March 26th 6.00pm Evening Service <i>Lent 4</i>	T Banks	L Dunbar	Minister	Lent	A Taylor
Sun April 2nd 9.00am Communion <i>Lent 5</i>	L O'Connell Edwards M Edwards	L O'Connell Edwards	Minister	Lent	T Banks

**CHURCHWARDENS: Mrs. Mary Miller Tel: 831998
Tel: 832610**

BRASS CLEANING: Mrs M Merrett

Mrs Sylvia Matthews Tel: 832215

Mrs P Powell

CHURCH NEWS

January/February 2017

Deaths – Mr David Greg

Marriages –

Baptism –

+++++

Dear Friends

Dates for your diary

Christian Aid Week 14th – 20th May

Spring Fayre 6th May

Harvest Supper 7th October

Harvest Festival 15th October

Christmas Fayre 25th November

Should anyone out there be willing to help with the cleaning in church we have slots available on a one week a month rota. The task is not that onerous - a light dusting and vacuuming of aisles, we are a friendly bunch and it could be used as part of your keep fit regime! Please give me a call.

Mary Miller Churchwarden – 01386 831998

MH Carpentry



Time served craftsman &
qualified teacher of carpentry;
specialising in:

- Decking
- Doors
- Windows
- Flooring- wood / laminate
- Locks
- Fencing
- Roofing
- CCTV installation
- Any projects to do with wood
- Snagger for new builds

No job too small, Competitive prices
Free estimate in local area

Call Matt 07803 608813 / 01386 642885
email matt-henson@hotmail.co.uk

Jo Martin Youth Dance

*A recreational dance class for boys and girls
age 5-16, welcoming all abilities.*

Offering street, jazz and contemporary dance.

Tuesday

JMYD Juniors 5-10 years old 6-6.45pm

JMYD Seniors 11-16 years old 7-8pm

£3 a class, per person

Offenham Village Hall

For more information contact:

Jo Martin

07581328329

jomartin89@hotmail.com



Professional
Member of
**People
Dancing**
the foundation for
community dance

Merstow Green

FUNERAL HOME, EVESHAM

For over 25 years Philip Tomlins and his family have provided individual care to the residents of the Vale of Evesham.

Based in Merstow Green, at the heart of Evesham, we can help you plan ahead and provide a comforting guiding hand when it matters most.

Telephone:

01386 49903

24 hours



Philip Tomlins DipFD

Call **Philip** direct for support, care and reassurance in your time of need

Plan Ahead, pre-paid and bespoke arrangements

Spread the costs and concern of your personal requirements with our pre-paid funeral planning service for yourself or a relative.

Green Funerals and Woodland Burials

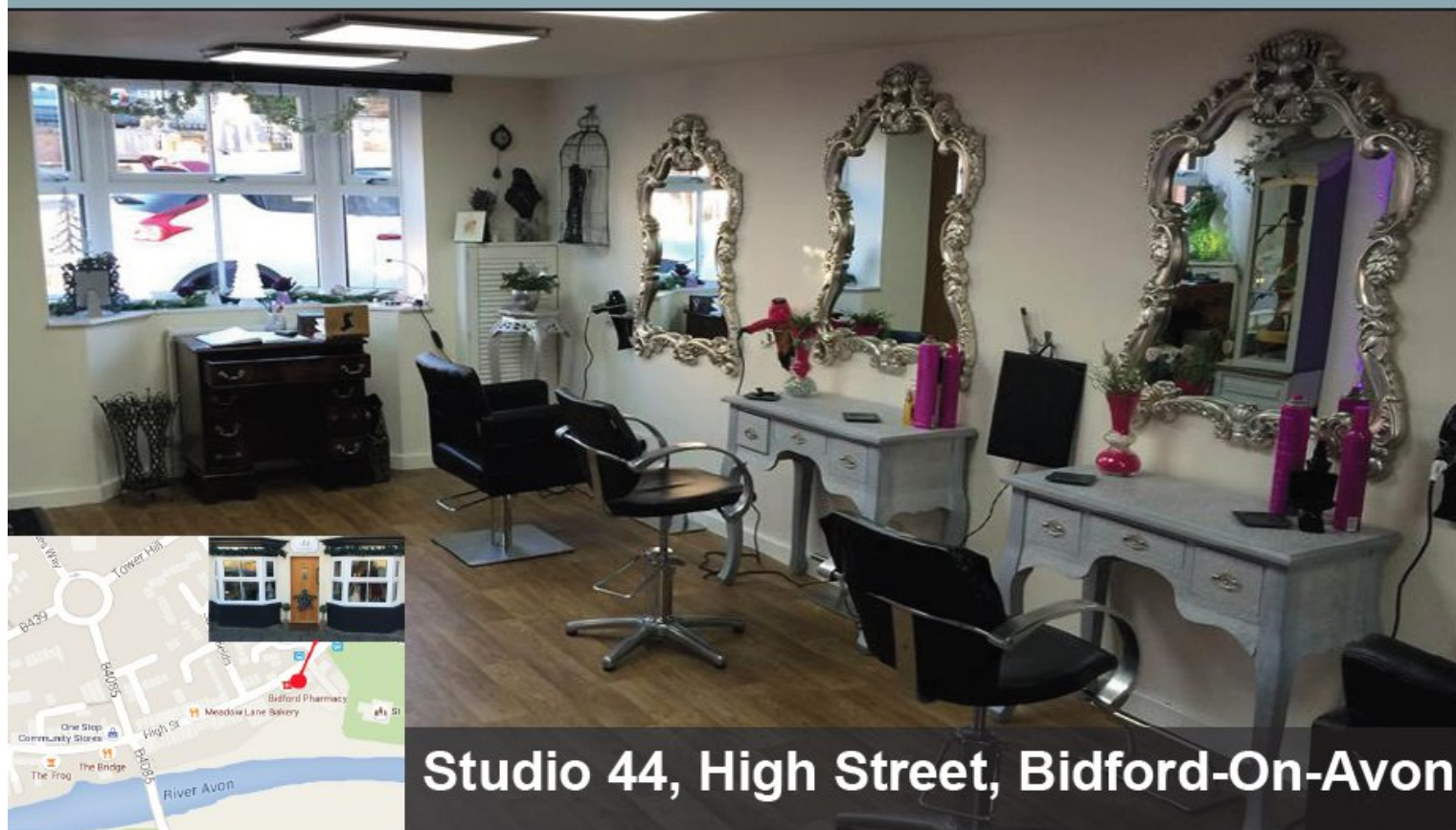
From environmentally friendly caskets to full woodland burials, Merstow Green are able to advise on all service types.



www.MerstowGreen.co.uk



TIME FOR CHANGE, COME AND SEE US AT STUDIO 44!



Studio 44, High Street, Bidford-On-Avon

With over 20 years experience and having recently moved to the area, Karen is an attentive and personal hairdresser. Whether its a perm, blow-dry, colour or gents, Karen will always make you feel special. So if you think its time for change then get in touch and make a booking. Offers for Karen and Robyn.

Cut and Blow Dry
Only £25 (Usual price from £33)

- Excludes Cut & Finish
- Valid until the end of March 2017
- One voucher for you

Cut and Blow Dry
Only £25

- Excludes Cut & Finish
- Valid until the end of March 2017
- One voucher for your friend or family

Call to book an appointment
today on 01789 773774

Evening appointments available, ask for details.

Studio

44

A J HICKMAN ELECTRICAL

E: ajhickmanelectrical@aol.com

As a business our aim is to provide a **high quality** service so our customers receive **top quality** install and satisfaction on the whole service at a very **competitive price.**

- New Build Installs
- Rewires
- Fuseboard Upgrades
- Additional Power Points / Lights
- External Lighting
- Any Aspects of Electrical Work
- Additional BT Points
- Additional TV Points

Electrical Safety Register

incorporating
ELECSA + ECA
Certification Ltd



TEL: 01386 831258

MOB: 07976 052828

The logo for Hairs & Graces Unisex Hair Salon is displayed on a dark background. At the top, there is a decorative flourish. Below it, the words "HAIRS" and "GRACES" are written in a large, serif font, separated by a smaller flourish. Underneath, "UNISEX HAIR SALON" is written in a smaller, sans-serif font, flanked by two scissors. At the bottom, there is another decorative flourish. Below the flourish, the phone numbers "01386 257170" and "07429 287037" are listed, followed by the email address "contact@hairs-graces.co.uk".

HAIRS
&
GRACES
UNISEX
HAIR SALON
01386 257170
07429 287037
contact@hairs-graces.co.uk

Visit us at:

Unit 28

Two Shires Park

Honeybounne

WR117QF

Open Tuesday –
Saturday

You can also find us
on Facebook

Dear Residents,

Spring is on its way, the flowers and buds are emerging, and the weather feels warmer. Soon the central heating can be switched off! Hooray!

Last month has seen lots going on at County and District Councils, so I will go straight into the details:-

Worcestershire County Council have published their New Corporate Plan

There is much to be celebrated in what has been achieved so far in Worcestershire, and the Council has ambitious plans to continue to improve and develop the County.

There are lots more in the plan, and it is worth a read. See the following link for more -

http://www.worcestershire.gov.uk/info/20088/about_your_council/109/worcestershires_corporate_plan

Also WCC has just published the 4th Local Transport Plan, and again it is worth a read. It sets the transport strategy for the County until 2030 –see <http://www.worcestershire.gov.uk/LTP>

It is out to consultation, and closes 17th March 2017.

Bretforton Parish Council have submitted their views on improving cycle ways from Evesham to Bretforton and Honeybourne. So you too can help make improvements by completing the online questionnaire, or writing to the LTP4 team at WCC; email Transportstrategy@worcestershire.gov.uk

And finally Worcestershire County Council Budget 2017/18, & Council Tax 2017/18 have been set.

It is that time of year when Council Budgets are approved and this has direct impact on the Council Tax you pay.

The District Council Budget 2017/18, & Council Tax 2017/18 are also in the process of being set.

The District Council are proposing to increase council tax by 2% which will increase District Council tax band D for 2017/18 by £2.35 per year.

Highways issues :-

1. **New Offenham Rd/Elm Road roundabout in Evesham** – Works completed and many residents have confirmed it is a big improvement and reduces congestion at this junction.
2. **HGV's using Mickleton Rd** – some Unipart lorries were spotted using this road and reported to their office, and the drivers spoken to re-inforce the guidelines in the Vale of Evesham Advisory Lorry route.

As always, if you have any issues on any Highways matters, please report it on the WCC website

http://www.worcestershire.gov.uk/homepage/98/report_it Also remember a photo of the Highways problem is as good as “a thousand words” so always take a photo where possible.

Perrie Drive and Fernihough Avenue Residents Save our Greens The WDC Localism Panel agreed to defer making a decision on whether to make this an asset of Community Value until a site visit is arranged in March 2017.

Divisional Funds.

1. Honeybees WI have put in a request for some new tables - awaiting more info
2. Cleeve Prior Wharf – grant requested for life buoy, table and sign – grant processed

Pebworth Rural Cinema

Remember, the Pebworth Rural Cinema is on the last Friday of every month. Put the following dates in your diary:

Friday 24th February; Friday 31st March; Friday 28th April = Pebworth Rural Cinema Night

The showings will be in the village hall, and doors open at 7pm with food and drinks available. The tickets will normally cost £5 per person, so make sure you bring your friends and buy the popcorn! More details on the Rural Cinema will be published on the village website soon www.pebworth.org.

Your District & County Councillor, Alastair Adams can be contacted on adams.pebworth@gmail.com or mobile 07725 979 277



Local Lawncare Specialists

Now is the perfect time to get your lawn in shape
for the summer

Services include

- | | | | |
|---|---------------------|----------------------|---|
| □ | Moss & Weed Control | Scarification | □ |
| | Seasonal Treatments | Hollow-tine Aeration | |
| | Turfing | Lawn Mowing | |

Services also include

- Patio and Drive weed removal
- Hedge Trimming
- Tree and Shrub care
- General Garden Maintenance

□

Contact Raffe Wood today on
07496 453667
01386 324878

□

SportHoneybourne

www.sporthoneybourne.org.uk is the website where you can quickly find your favourite sports and exercises.

Local clubs and classes are all listed, so you have direct access to view their activities. Also, the latest national news feeds are available here for most popular sports.

Is your particular interest Orienteering?

If so, enter the website and select “Other”, and then select “Orienteering”.

Or is it Rounders?

If so, enter the website and select “Ball”, and then select “Rounders”

Anything missing?

What will you do today?

Maybe set a Personal Best (PB), however short or slow. We can all do just a little more to improve our health and fitness.

Need help or support? Contact Steve who will be only too pleased to help in any way.

www.sporthoneybourne.org.uk

HONEYBOURNE PLAY-READING GROUP



This month Honeybourne Play-Reading Group are looking forward to their spring season of play-reading which will start on **Thursday, 16th March at 7:30pm.**

We are currently at full membership but not every member can make each reading, so there is still plenty of opportunity to get involved. Don't be shy! We aim to keep our play-readings as light-hearted and entertaining as possible and offer a welcome drink and nibbles on arrival.

The group is open to all villagers and their friends from the surrounding area. They meet on the third Thursday of each month in Stephenson Way. Membership is free and all reading material is provided.

For further details, please contact Nicola Hogan

Mobile: 0785 191 3435 / Email: honeybourneplayreadinggroup@gmail.com

live
happy!
with
Slimming World



**Honeybourne Village Hall
Every Thursday 7pm**

**Lose weight without going hungry
Still enjoy your favourite meals**

**Want to know more call Julie
075115 18445**

**Or just pop along - a warm welcome
awaits**

visit the website for delicious recipes
slimmingworld.co.uk

f t i 0344 897 8000

Slimming
WORLD

touching hearts, changing lives

UNIFORMED ORGANISATIONS

1st Honeybourne & District Scout Group consists of:

BEAVERS

Beavers meet on a Wednesday evening at Honeybourne First School from 6.00pm to 7.15pm, for boys & girls aged from 5yrs 9mths to 8 yrs

Contact: Sally Perkins 01386 833915

CUBS

Cubs meet on a Wednesday evening at Honeybourne Village Hall from 6.30pm to 8.00pm for boys & girls aged from 7yrs 6 mths to 10 yrs 6 mths

Contact: Jayne Richmond on 01386 831515

SCOUTS

Scouts meet on a Thursday evening at Pebworth Village Hall from 7.30pm to 9pm for boys & girls aged from 10 yrs to 14 yrs

Contact: Lynn Clements on 01386 833238 or 07950 791610

SEA CADETS

Evesham Sea Cadets and Marine Detachment meet Monday and Thursday evenings every week at 7.00pm until 9.30pm for young people aged between 10 years to 18 years.

For further information please email: aoevesham@gmail.com or ring us on a parade night on 01386 833383.

H-BUG

Honeybourne Bicycle Users Group

Every Honeybourne child now has the opportunity to cycle.

The village (H-BUG) has bikes for 6-10 year olds to borrow and also bikes that parents can borrow - all completely free of charge.

There is a short family cycle ride every month on the last Saturday of the month at 2.00pm from the village hall.

Bikes can be booked in advance by texting request to 07971 989 430



the Fleece Inn

The Cross, Bretforton, Nr. Evesham,
Worcestershire WR11 7JE

Tel: 01386 831173

Email: info@thefleeceinn.co.uk

www.thefleeceinn.co.uk

March at the Fleece

Fleecey Folk: Leveret - Sun 5 Mar, 8pm, £15 (Tickets going fast)

Three of England's finest folk musicians - Andy Cutting, Sam Sweeney and Rob Harbron in an exciting new collaboration.

Cheltenham Festival - Mon 13 - Fri 17 March

We'll be open for breakfast from 8.30am to fuel your day at the races. Call us to book or simply turn up.

Plus enjoy the racing on the big screen in the Barn throughout the festival days and re-runs in the early evening.

Craft Fair - Sun 19 March - 11:30am - 4pm, Free Entry

Come along and enjoy a range of beautifully crafted, local, artisan products, where there will be plenty of unique gift ideas on offer for Mother's Day, including: Local photography, handmade gifts and interior accessories, book folding, fused and stained glassware, hand-sewn bags, floristry, floral gifts and more.

Mothers Day - Sun 26 March

Treat the one you love to a delicious 3 course menu at the Fleece this Mothering Sunday, and we'll add a little something special for all the Mums too. Seating times: 12pm, 2.30pm, 5pm, and 7.30pm. Call 01386 831173 to book.

Quilter and the Ghost - Sun 2 Apr, 8pm, £10

Warm, nostalgic musical-theatre (with lovely, emotive folk songs and well-crafted storytelling) of a reclusive hoarder and her strange but sweet ghost, who collect real stories of inspiring women. A extraordinary, comic and compelling modern fairytale.

Folk Nights – open to all, every Thurs. Celtic Folk Night - Third Wednesdays.

Fizzy Friday - Every Friday 12noon - 9pm

Take Away Fish & Chips - Treat yourself for just £5.95

Food served: Monday to Friday 12pm-2.30pm & 6.30pm-9pm

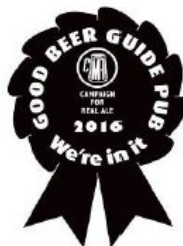
Saturday 12pm-3pm & 6pm-9pm. All day Sunday 12pm to 8.30pm

Country Pub of the Year (Good Pub Guide 2016)

Visit England Tourism Pub of the Year 2016 Gold Winner

For more events and our current menu see www.thefleeceinn.co.uk

Phone: 01386 831173 Email: info@thefleeceinn.co.uk





Your local friendly garage

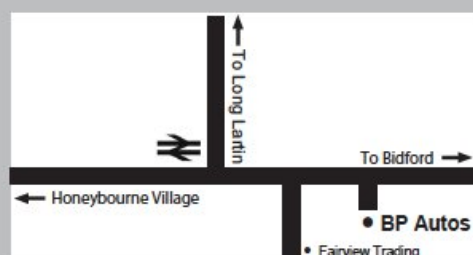
**For Servicing and Repairs to all Vehicle Makes
Cars to Light Commercial Vehicles**

**Batteries • Tyres • Exhausts
Wheel Balance • Wheel Alignment
Diagnostics • Puncture Repairs
And Much More!**

**Give us a call or drop in and see us.
We are here to help you safely on your journey.**

T: 01386 832157

**The Old Brickworks
Buckle Street
Honeybourne
Evesham WR11 8QE**



Opening hours

Mon to Fri: 8am - 6pm

Sat: 8am - 1pm

Honeybourne Parish Council

List of Councillors 2015 - 2019

Name	Address	Telephone	
Graham Clelland	Lyndale, Station Road, Honeybourne, Evesham WR11 7QG	01386 832500	E
Andrew Attridge	Kaaga, Friday Street, Pebworth. Or The Ranch Caravan Park	01386 830744	E
David Cowan	10 Westbourne, Honeybourne, Evesham WR11 7PT	01386 831801	E
Colin Clear	23 Dudley Road Honeybourne WR11 7XR	01386 831804	E
Richard Chivers	The Old Vicarage Stratford Road Honeybourne WR11 7PP	01386 830 272	C
Stephen Sidwell	Wychwood, Station Road, Honeybourne, Worc's, WR11 7QG	07815311432	C
Sandra Walsh	The Elms, Buckle Street Honeybourne WR11 8QQ	07714 237 336	C
Heath Jobes	1, Clun Forest Way, Honeybourne WR11 7AP	07736 168736	C
Mathew Henson	4 Herdwick Drive Honeybourne WR11 7AN	07803 608 813	C

Here are the details of the local police officers. The non-emergency number is 101 anywhere in the UK.

Police officer: Julie DeParis - julie.deparis@westmercia.pnn.police.uk

Police Community Support Officer - Pete Davey

peter.davey@westmercia.pnn.police.uk

Tel 0300 333 3000, Voicemail 01905 725763

PSCO Bradley Sansom - bradley.sansom@westmercia.pnn.police.uk

Tel 101, ext 3408

Other useful contacts:

Village Hall Lettings Secretary, for regular bookings call Rita on 01386 640696 or Sylvia on 832215 for one-off events

Honeybourne Sport and Recreation Field - John Stedman, Tel 01789 773 999

Honeytots

Parent and Toddler group

welcomes new people

Wed. 9.15-11.30am term time at Honeybourne First School Hall

£2 per family, snack included

We are aimed at toddler ages but babies are also welcome.

Find us on Facebook- Honeytots

Phone: Vicki Gear 07834 485794

BIRTHDAY MEMORIES

**HAPPY BIRTHDAY
AUSTIN SADLER
19TH MARCH**

**LOVE FROM BARB, NIGEL, DESMOND RODNEY
AND FAMILIES XXX**

Walking on Footpaths

Spring is just around the corner and we know that people look forward to walking their dogs and children in the countryside. Could I please remind everyone that when walking footpaths ALL dogs should be kept on a lead and under control at all times throughout the year. There may not be any sheep in the footpath field but chances are they are in the next door field and at this time of year they could be pregnant and are easily spooked leading to serious problems. Footpaths are a right of way and are for walking along and not for exercising dogs in.

Honeyangels

Honeyangels meet every Tuesday at 10am in the church. We have a few songs, a story, a collection, a drink and cake while the children play with toys and mums or dads chat.

We restart after Christmas on Tuesday 10th January.

For more information contact Sylvia Matthews on

01386 832215

H-BUG
Cycle rides in Honeybourne
Everyone is welcome

Saturday 4th March	Aspire to cycle 10 or 20 miles 2.00pm at Badham Motors
Saturday 11th March	Aspire to cycle 20 or 40 miles 2.00pm at Badham Motors
Saturday 18th March	“Challenge Hills” A 27-mile cycle ride 2.00pm at Badham Motors
Saturday 25th March	Family cycle ride 2.00pm at the Village Hall
Saturday 1st April	Aspire to cycle 10 or 20 miles 2.00pm at Badham Motors

SHORT MAT BOWLS

If you enjoy watching, and perhaps marvelled at the skill of the professionals performing on T.V. why not come along to the Village Hall on Friday evenings (7.30) and have a go yourselves at a somewhat simpler version called Short Mat Bowls.

All equipment is provided the only thing we ask that you wear flat shoes. Trainers etc. are ideal. The cost is £2 per session.

The deadline for items for
the March edition of the
Honeybourne Village News
is 18th February.

BADHAM MOTORS

Stratford Rd. Honeybourne Evesham.

Tel: 830307

After Hours 831514

**MOTOR ENGINEERS WHO CARE
ALL TYPE OF VEHICLE REPAIR
SERVICING/M.O.T.**

CLASS 3.4.7.

QUALITY USED CARS ALWAYS

COMPLEMENTARY THERAPIES

Emily Parr & Di Richardson

- Reflexology
- Reflexology for fertility and pregnancy
- Sports massage
- Remedial massage
- Indian Head massage
- Aromatherapy



Available at **Evesham Natural Health Centre**, 98 High Street
Please call **01386 421 821** to make an appointment

FILL THE FRAME

All your picture framing needs.

Specialist in framing sport, film, TV and
music photos and memorabilia. Wedding
collages made to order.

Phil Rainey

45, School St, Honeybourne

Tel. 01386 833505

07969 620555

ADVANCED BOOKING CARS

A ABC Private Hire of Honeybourne **A**

B Call Thomas on **B**

C 07752 640352 / 01386 834028 **C**

www.abcprivatehire.co.uk

Any Destination, Any Time or Day Hire
Airport, Rail, Coach & Sea Port Connections
Meet and Greet Service



For all your craft and
sewing needs
No job too big or too
small!

Ring Shirley on 07957 620237
or email craftandsew4u@yahoo.co.uk

craftandsew4u.co.uk

Evergreen Garden Maintenance

Mowing Hedge Cutting
Tree Pruning, Turfing Etc:
No job too small References available
Garden Clearance Service

FOR A FREE QUOTE

Please Phone Tony

T: 01386 854797

M: 07752 613814



To advertise in the Honeybourne Village News or to
contribute to the magazine, please contact Claire Poore
at magazine@honeybourne.org.uk
or phone 01386 832800

Need a Bookkeeper?

Then call

Sally Clifford

on **01386 834 239**

Cashbooks, Ledgers, Sage Work,
Bank Reconciliations, VAT
Returns.

CLAREMONT CARS

PRIVATE HIRE SERVICE

From Bidford & Honeybourne

We offer a professional door to door service by appointment
24 hours a day, 7 days a week.

Serving South Warwickshire, the North Cotswolds and the Vale of Evesham,
we cover all locations, both locally and throughout the U.K.

Estate Cars and people carriers up to 8 seats are available.
We specialise in meet-and-greet facilities at all major UK Airports.
Sample discounted rates (at 1st January 2016) including up to four
passengers (supplement applies for people carrier):

BIDFORD OR HONEYBOURNE to

	From		From
Birmingham	£60	Bristol Airport	£100
Heathrow	£125	Luton Airport	£130
Gatwick	£150	Stansted	£150
Manchester	£140	Southampton	£140

Please enquire for rates from your local area or for any other destination.

FOR THE BEST IN PRIVATE ~HIRE

CALL NOW ON:

01386 833660

Philip Hickson – 53 Stratford Rd, Honeybourne,
Evesham. WR11 7PP

E-mail: info@claremontcars.co.uk

Website: www.claremontcars.co.uk