



MYSTÈRE.

WWW.VITTERS.COM

VITTERS

S H I P Y A R D

MYSTÈRE

Mystère has won a prestigious award.
A stunning result and a statement to the Owner, designer, our building team and everyone involved!



WORLD SUPERYACHT AWARDS:
"Best Sailing Yacht in 30 meters to 44 meters size range"
"Best Sailing Yacht Exterior Styling"

NOMINATED FOR THE SHOWBOATS INTERNATIONAL AWARDS:
"Most innovative Sailing Yacht"
"Best Sailing Yacht over 40 meters"
"Best Sailing Yacht Interior"

NOMINATED FOR THE INTERNATIONAL SUPERYACHT SOCIETY AWARDS
"Best Sailing Yacht over 36 meters"





MAJESTIC MYSTÈRE

Mystère is the uncompromised outcome of a design brief to create a truly integrated modern and stylish yacht. Her 190-ton displacement extends over the 39-metre waterline, offering an ideal marriage of speed and ease of handling. Mystère is stylish, with a clean, linear architecture and clear sightlines from the helm and cockpit.

The yacht benefits from a selection of unique interior and exterior innovations, ensuring an unforgettable experience for all who step on board. With Mystère, it is fair to say that we first met and then exceeded expectations.



SUPERB SAILING

Mystère's owner has a preference for volume in length rather than beam. This has given the yacht both the space and the capacity for easy globetrotting. The low centre of gravity optimises Mystère's seaworthiness and power. She sails equally well in the light airs of the Med as on lengthy ocean-going passages.

The lifting keel allows a reduction in draft from 5.75 metres (19 ft) to 3.75 metres (12 ft), combining access to shoal water with excellent sailing characteristics and stability. The powerful sail plan includes a fully battened mainsail on a Leisure Furl Boom from Marten Spars, a jib and staysail on furlers, as well as a Code 1 and an asymmetric spinnaker.



CLEAN AND LEAN

The concept for *Mystère* was to keep the decks as clean and uncluttered as possible. Her exterior styling is characterised by a low pilothouse on a flush deck, with hidden captive winches, under-deck leads for safety, and clear walkways. The main cockpit is sunk below deck level inside a coaming, affording protection yet retaining clear views forward from the wheel. A separate owner's cockpit aft doubles serves as a private terrace, with direct access to the owner's suite. A full cockpit cover can be set or hidden away at will.

The owner's 'modernist ideals' are reflected in the layout, with the distinction between interior and exterior spaces being expressly blurred. For example, the teak deck continues uninterrupted through the saloon windscreen without a visible frame or upstand. This creates the illusion of a flowing deck from interior to exterior, with the roof floating above.



SOPHISTICATED ATMOSPHERE

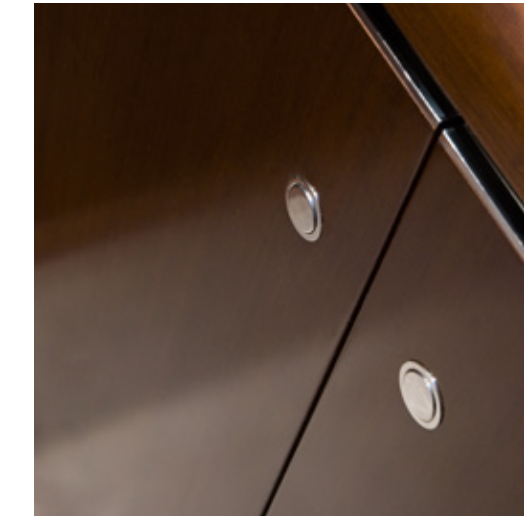
While the design philosophy and lightweight construction required a bare minimum of detailing, the owner still desired a rich, dark and sophisticated interior ambiance. To achieve this balance of modernity and comfort, a rich flat-grain cherrywood was used throughout. This gives a strong modern structure to the bulkheads and furniture, the warmth of which counterbalances the high-contrast materials elsewhere.

The lower deck layout is calm and symmetrical, with carefully planned sightlines and focal points which lead you through the yacht. There is comfortable and flexible accommodation for six to seven guests and six crewmembers. The upper saloon is a magnificent social area offering a 360-degree panorama. This vast light and open area is divided into intimate seating and dining areas, with a bar to port. The navigation area sees carefully matched instrumentation integrated in leather panels, complete with custom leather helm seats.



COMFORT AND SPACE

The owner's stateroom takes up the full beam aft of the yacht and includes two double beds. A double bathroom and 'walk in' wardrobe further enhance the sense of grandeur in this lovely area. An intimate raised seating area saddles the interface between the bedroom and the owner's private cockpit. The aft bulkhead in glass floods the bedroom with light, providing sightlines to the exterior and dramatically increasing the feeling of space.



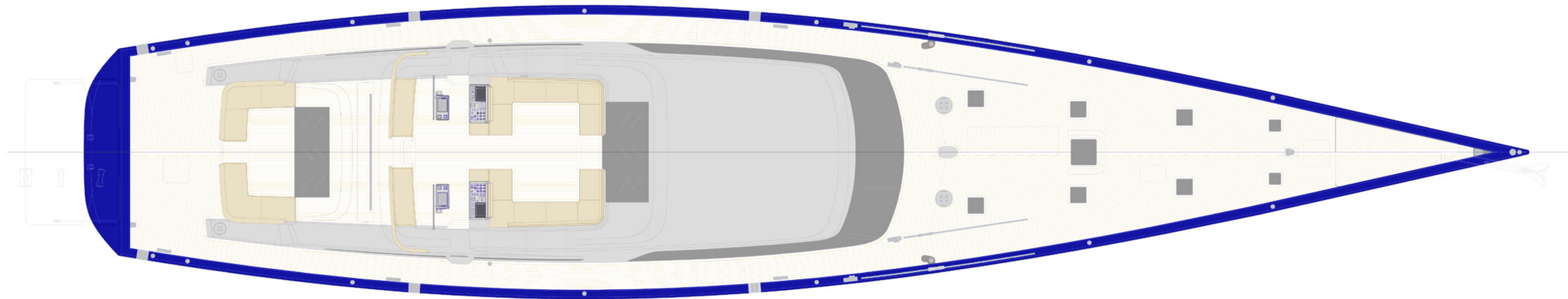
THE FINISHING TOUCHES

Mystère benefits from the fabulous finishing that makes every Vitters yacht a treat for the eyes. Soles are the darkest wide-planked Indian rose wood, which wraps up the skirting. A discrete stainless steel trim captures the light and defines the floor boundary, making the floor feel even wider than it is. Furniture tops are finished with dark leather inserts, offering contrast with the pale minimalist window linings and deckheads. Custom polished stainless steel lights, switches, lights and milled flat stainless steel handrails are integrated seamlessly into furniture, resembling jewellery on a black evening dress.



MAINTAINING SILENCE

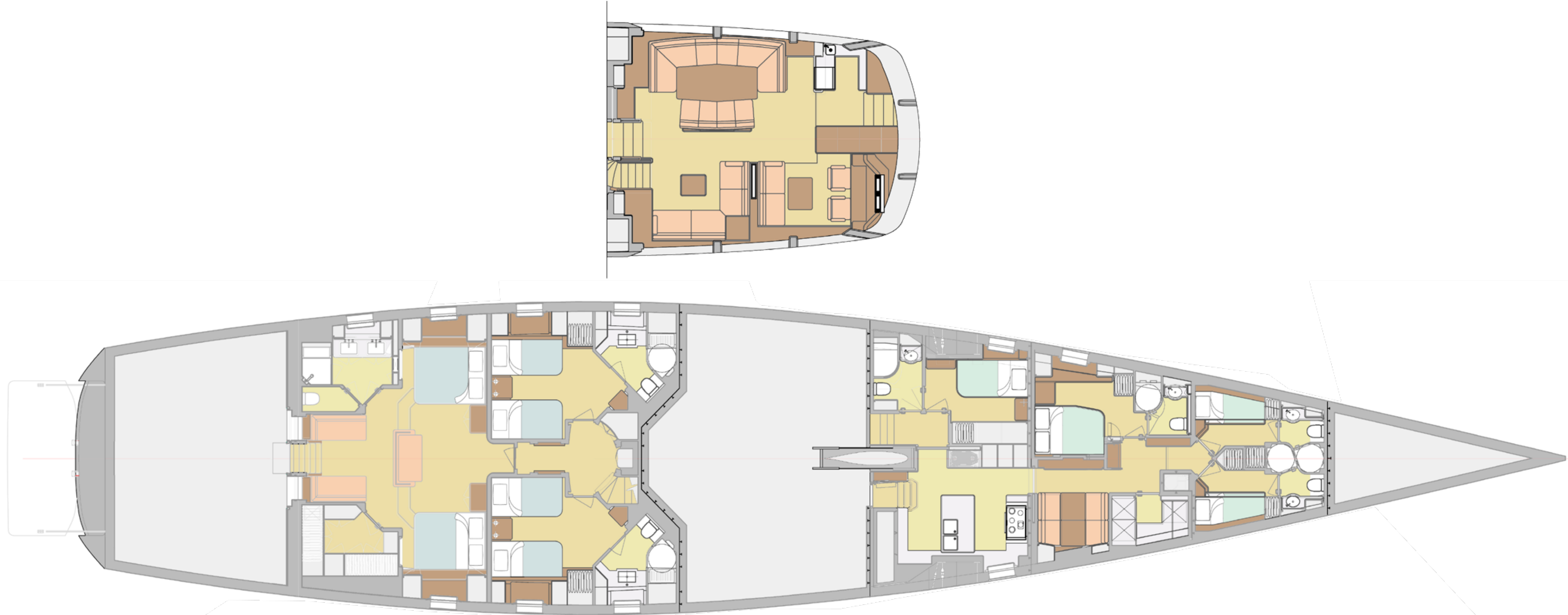
Every high performance sailing yacht with a relatively shallow bottom presents engineers with a challenge to ensure that equipment and machinery can be properly serviced. On *Mystère* smart thinking prevails throughout and access for maintenance is assured. The second challenge was to make the yacht as quiet as possible without adding too much weight. *Mystère* sets a new standard in achieving low noise levels in a lightweight vessel with a lightweight interior.



TECHNICAL SPECIFICATIONS

Type	Sloop
Design	Tripp Design Naval Architecture
Interior Design	Rhoades Young
Owners' Representative	Jens Cornelsen Yacht Consultant
Length over all	43.2 meter (140 ft)
Length waterline	38.5 meter (126 ft)
Beam	8.8 meter (29 ft)
Draught	3.75 meter (12 ft) / with lifting keel 5.75 meter (19 ft)
Ballast	40 ton
Displacement lightship	190 ton
Hull	Alustar
Superstructure	Carbon on foam core
Exterior paint system	Sikkens with Awl-Grip top coat
	Hull: Majestic Blue / Superstructure: Bright Silver Metallic
Classification	Lloyd's SSC + 100 A1





TECHNICAL SPECIFICATIONS

Engine	MTU 12V 183TE72	
Power	610 kW @ 2100rpm	
Gearbox	Mekanord 350 HSX / LS	
Shaft & propeller	Korsør CP18HRS	
Bow- & sternthruster	Max Power R450 – 55kW	
Fuel tank capacity	12.700 litres	
Water tank capacity	5.800 litres	
Generator	2 x Northern Lights M1064T2, 55 kW	
Spar	Marten Marine infurling boom, 52.7 meter (173 ft) above maindeck	
Main mast	I :	50.5 meter (166 ft)
	P:	48.7 meter (160 ft)
	J:	15.7 meter (52 ft)
	E:	18.5 meter (61 ft)
Sails	- Mainsail	501 m ²
	- Genoa	397 m ²
	- Staysail	134 m ²
	- Storm strysail	68 m ²
	- Code Zero	880 m ²
- Genaker	1450 m ²	





VITTERS SHIPYARD

We are builders of amongst the finest sailing and motor yachts being produced today. The emphasis is on delivering superior quality in the finished yacht, providing seamless support to Owner and crew after the yacht is delivered and incorporating the lessons learned from this service into every subsequent project, all while maintaining a competitive commercial position.

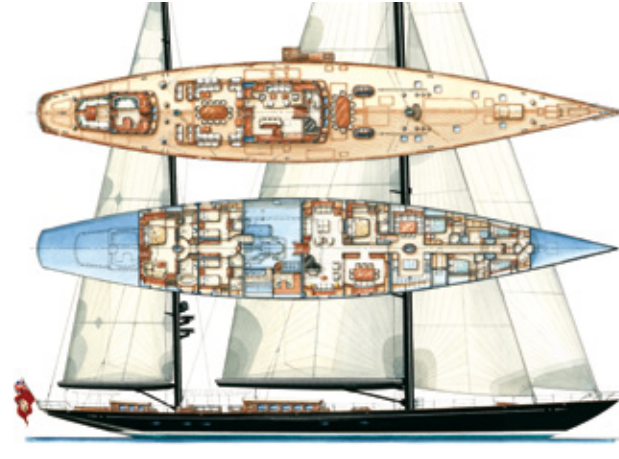
Situated on the original Dutch coastline, now in the heart of the country, Vitters continues to take advantage of the area's longstanding boat building traditions. We employ the best local craftsman and also utilize the strong infrastructure of specialist technical companies that continues to grow in support of the Dutch yacht building industry. The priorities are to always try to better the quality of the build while at the same time improving efficiency and always looking for the simpler, more reliable technical solutions.

Of course Owners are the first and most important ingredient of every yacht building project. Every Owner has a unique vision and so each project provides unique challenges. We in turn challenges the engineering and construction team to fulfill the Owner's vision and at the same time to deliver a strong, safe and practical superyacht; complying with the usual external regulatory bodies. The quality and track record of Vitters' fleet bears testament to the success of this approach.



SARRISSA.

2011
138 ft sailing yacht



MARIE.

2010
180 ft sailing yacht



LADY B.

2009
147 ft sailing yacht



MYSTÈRE.

2006
140 ft sailing yacht



ADÈLE.

2005
180 ft sailing yacht



GHOST.

2005
122 ft sailing yacht



CINDERELLA IV.

2009
128 ft sailing yacht



ERICA XII.

2009
172 ft sailing yacht



NIRVANA.

2007
176 ft sailing yacht



GIMLÄ.

2004
140 ft sailing yacht



WHIRLAWAY.

2003
140 ft sailing yacht



RED DRAGON.

2002
140 ft sailing yacht



TIMONEER.

2001
147 ft sailing yacht



THAT'S Y.

2000
100 ft sailing yacht



APHRODITE 2.

1999
142 ft sailing yacht



MARGUERITE.

1999
92 ft sailing yacht

JULES VERNE.

2000
61 ft motor yacht



DARDANELLA.

1998
121 ft motor yacht



TIMELESS.

1997
100 ft motor yacht



CAVO D'ORO.

1995
59 ft motor yacht



FELICITA.

1996
73 ft sailing yacht



NINEMIA.

1995
96 ft motor yacht



CAMELIA.

1994
96 ft sailing yacht



THALIA.

1994
159 ft sailing yacht

APHRODITE 1.

1993
93.6 ft sailing yacht

CREDITS

Photography

- Albert Brunsting, Meppel, The Netherlands
- Tom Nitsch Images, Hamburg, Germany
- Frans Nooren, Meppel, The Netherlands

Concept, design and layout

- Oranja, Meppel, The Netherlands

Printed by

- Giethoorn Ten Brink, Meppel, The Netherlands



WWW.VITTERS.COM

Vitters Shipyard B.V. - Stouweweg 33 - 8064 PD Zwartsluis - The Netherlands
tel. +31 (0)38 38 67 145 - fax. +31 (0)38 38 68 433 - info@vitters.com