

# FANS



# CSL



CAROTHERS AND SON, LTD.  
INDUSTRIAL SYSTEMS

## FANS

- Various Fabrication Materials Available: A36 Carbon Steel, Wear Resistant Plate, Fiberglass and Stainless Steel.
- Various sizes and Volumes from 500 CFM @ 2" Static Pressure to 500,000 CFM @ 30" Static Pressure.
- Many Sizes in Stock For Quick Delivery.
- System Installation of Primary and Relay Fans
- Heavy Duty Material Handling Relay and Primary Fans
- High Temperature and Process Gas Models
- Discharge Evase' Stacks and Ducts
- High and Low Pressure Models
- Fan Discharge Silencers and Transitions

[www.cslsystems.com](http://www.cslsystems.com)

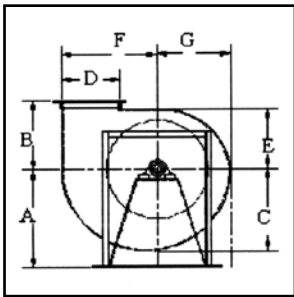
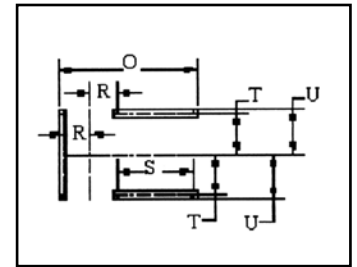
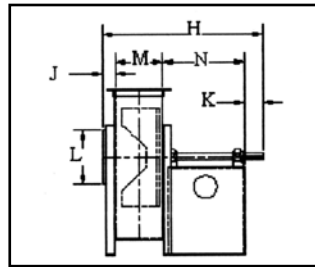
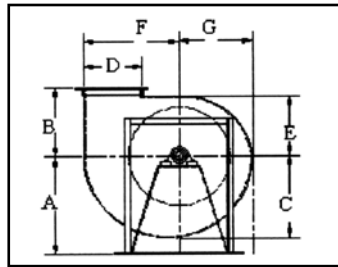
**CAROTHERS AND SON, LTD.**  
P.O. Box 2709, Eugene, OR 97402

**Phone:** (541) 484-4270  
**Fax:** (541) 484-5681

## FRT FANS

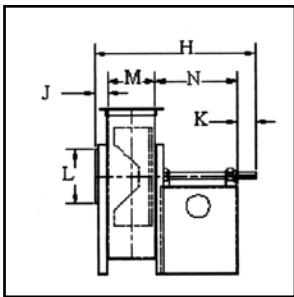
Size	Wheel Dia.	A	B	C	D	E	F	G	H	J	K	L I.D.	M	N	O
35	22 <sup>3</sup> / <sub>8</sub>	25 <sup>1</sup> / <sub>2</sub>	16 <sup>1</sup> / <sub>2</sub>	18 <sup>3</sup> / <sub>8</sub>	13	14	21 <sup>1</sup> / <sub>8</sub>	16 <sup>3</sup> / <sub>8</sub>	41 <sup>1</sup> / <sub>4</sub>	3 <sup>1</sup> / <sub>8</sub>	5	12 <sup>7</sup> / <sub>8</sub>	10 <sup>3</sup> / <sub>4</sub>	22 <sup>3</sup> / <sub>8</sub>	36 <sup>3</sup> / <sub>8</sub>
40	26 <sup>1</sup> / <sub>8</sub>	28	18 <sup>1</sup> / <sub>2</sub>	21 <sup>3</sup> / <sub>8</sub>	15	16 <sup>1</sup> / <sub>8</sub>	24 <sup>3</sup> / <sub>8</sub>	18 <sup>7</sup> / <sub>8</sub>	46 <sup>3</sup> / <sub>8</sub>	4 <sup>1</sup> / <sub>8</sub>	5	14 <sup>3</sup> / <sub>8</sub>	12 <sup>3</sup> / <sub>8</sub>	24 <sup>3</sup> / <sub>8</sub>	41
45	29 <sup>3</sup> / <sub>8</sub>	32 <sup>1</sup> / <sub>2</sub>	21	24 <sup>1</sup> / <sub>2</sub>	16 <sup>7</sup> / <sub>8</sub>	18 <sup>1</sup> / <sub>4</sub>	27 <sup>7</sup> / <sub>8</sub>	21 <sup>3</sup> / <sub>8</sub>	48 <sup>3</sup> / <sub>8</sub>	4 <sup>1</sup> / <sub>8</sub>	6	16 <sup>7</sup> / <sub>8</sub>	14	24 <sup>1</sup> / <sub>4</sub>	42 <sup>5</sup> / <sub>8</sub>

Size	R	S	T	U	a	b	c	d	Shaft Dia.	Keyway	Base Holes
35	7	19 <sup>1</sup> / <sub>4</sub>	10 <sup>7</sup> / <sub>8</sub>	11 <sup>3</sup> / <sub>4</sub>	17 <sup>5</sup> / <sub>8</sub>	26 <sup>5</sup> / <sub>8</sub>	20	15 <sup>1</sup> / <sub>4</sub>	1 <sup>15</sup> / <sub>16</sub>	1/2 x 1/4 x 5	9/16
40	8 <sup>3</sup> / <sub>8</sub>	20 <sup>1</sup> / <sub>4</sub>	12 <sup>1</sup> / <sub>4</sub>	13 <sup>3</sup> / <sub>8</sub>	20 <sup>1</sup> / <sub>4</sub>	30 <sup>3</sup> / <sub>8</sub>	23	17 1/2	2 <sup>3</sup> / <sub>16</sub>	1/2 x 1/4 x 5 1/2	3/4
45	9 <sup>1</sup> / <sub>8</sub>	20 <sup>1</sup> / <sub>4</sub>	13 <sup>3</sup> / <sub>8</sub>	14 <sup>1</sup> / <sub>2</sub>	23	34 <sup>3</sup> / <sub>8</sub>	26 <sup>1</sup> / <sub>8</sub>	19 <sup>7</sup> / <sub>8</sub>	2 <sup>7</sup> / <sub>8</sub>	5/8 x 5/16 x 6	3/4



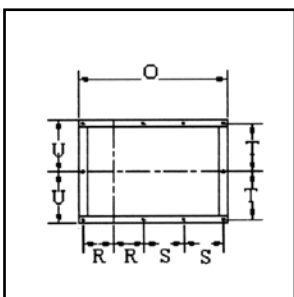
Size	Wheel Dia.	A	B	C	D	E	F	G	H	J	K	L I.D.	M	N	O
50	33	32 <sup>3</sup> / <sub>4</sub>	23	27 <sup>3</sup> / <sub>8</sub>	18 <sup>3</sup> / <sub>4</sub>	20 <sup>3</sup> / <sub>8</sub>	30 <sup>7</sup> / <sub>8</sub>	23 <sup>7</sup> / <sub>8</sub>	52 <sup>1</sup> / <sub>4</sub>	4 <sup>1</sup> / <sub>8</sub>	6 <sup>1</sup> / <sub>2</sub>	18 <sup>5</sup> / <sub>8</sub>	15 <sup>5</sup> / <sub>8</sub>	26	49 <sup>7</sup> / <sub>8</sub>
55	36 <sup>1</sup> / <sub>2</sub>	36 <sup>1</sup> / <sub>4</sub>	25 <sup>1</sup> / <sub>2</sub>	30 <sup>1</sup> / <sub>4</sub>	20 <sup>3</sup> / <sub>4</sub>	22 <sup>1</sup> / <sub>2</sub>	34 <sup>1</sup> / <sub>8</sub>	26 <sup>3</sup> / <sub>8</sub>	56	5 <sup>1</sup> / <sub>4</sub>	7	20 <sup>5</sup> / <sub>8</sub>	17 <sup>1</sup> / <sub>4</sub>	26 <sup>1</sup> / <sub>2</sub>	54 <sup>1</sup> / <sub>8</sub>
60	40	40	28	33 <sup>1</sup> / <sub>4</sub>	22 <sup>7</sup> / <sub>8</sub>	24 <sup>3</sup> / <sub>4</sub>	37 <sup>3</sup> / <sub>8</sub>	29	60 <sup>3</sup> / <sub>8</sub>	5 <sup>1</sup> / <sub>4</sub>	7 <sup>1</sup> / <sub>2</sub>	22 <sup>5</sup> / <sub>8</sub>	19	28 <sup>1</sup> / <sub>2</sub>	57 <sup>3</sup> / <sub>4</sub>
70	45 <sup>3</sup> / <sub>8</sub>	45	31 <sup>1</sup> / <sub>2</sub>	37 <sup>1</sup> / <sub>2</sub>	25 <sup>3</sup> / <sub>4</sub>	28	42 <sup>1</sup> / <sub>4</sub>	32 <sup>3</sup> / <sub>4</sub>	65 <sup>3</sup> / <sub>8</sub>	5 <sup>1</sup> / <sub>4</sub>	8	25 <sup>5</sup> / <sub>8</sub>	21 <sup>3</sup> / <sub>8</sub>	30 <sup>1</sup> / <sub>2</sub>	62 <sup>1</sup> / <sub>8</sub>

Size	R	S	T	U	Shaft Dia.	Keyway	Base Holes
50	9 <sup>7</sup> / <sub>8</sub>	13	15 <sup>5</sup> / <sub>8</sub>	17 <sup>5</sup> / <sub>8</sub>	2 <sup>11</sup> / <sub>16</sub>	5/8 x 5/16 x 6 1/2	3/4
55	11 <sup>1</sup> / <sub>4</sub>	13 <sup>3</sup> / <sub>4</sub>	17 <sup>1</sup> / <sub>2</sub>	19 <sup>3</sup> / <sub>4</sub>	2 <sup>11</sup> / <sub>16</sub>	5/8 x 5/16 x 7	7/8
60	12	14 <sup>1</sup> / <sub>4</sub>	19 <sup>3</sup> / <sub>8</sub>	21 <sup>1</sup> / <sub>8</sub>	3 <sup>7</sup> / <sub>16</sub>	7/8 x 7/16 x 7 1/2	7/8
70	13 <sup>1</sup> / <sub>4</sub>	15 <sup>1</sup> / <sub>4</sub>	21 <sup>1</sup> / <sub>4</sub>	23 <sup>1</sup> / <sub>2</sub>	3 <sup>7</sup> / <sub>16</sub>	7/8 x 7/16 x 8	7/8



Size	Wheel Dia.	A	B	C	D	E	F	G	H	J	K	L I.D.	M	N	O
75	50 <sup>1</sup> / <sub>2</sub>	50 <sup>1</sup> / <sub>2</sub>	34 <sup>1</sup> / <sub>2</sub>	42	28 3/4	31 <sup>1</sup> / <sub>4</sub>	47 <sup>1</sup> / <sub>4</sub>	36 <sup>3</sup> / <sub>4</sub>	70 <sup>7</sup> / <sub>8</sub>	6	8 <sup>1</sup> / <sub>2</sub>	28 <sup>3</sup> / <sub>8</sub>	23 <sup>7</sup> / <sub>8</sub>	32 <sup>1</sup> / <sub>2</sub>	64 <sup>3</sup> / <sub>8</sub>
80	57 <sup>1</sup> / <sub>2</sub>	57 <sup>1</sup> / <sub>2</sub>	39	47 <sup>3</sup> / <sub>4</sub>	32 <sup>3</sup> / <sub>8</sub>	35 <sup>1</sup> / <sub>2</sub>	53 <sup>3</sup> / <sub>4</sub>	41 <sup>3</sup> / <sub>4</sub>	77 <sup>3</sup> / <sub>8</sub>	7	9	32 <sup>3</sup> / <sub>8</sub>	27 <sup>1</sup> / <sub>8</sub>	34 <sup>1</sup> / <sub>4</sub>	71 <sup>3</sup> / <sub>8</sub>
90	64 <sup>3</sup> / <sub>8</sub>	64	43	53 <sup>3</sup> / <sub>8</sub>	36 <sup>3</sup> / <sub>8</sub>	39 <sup>7</sup> / <sub>8</sub>	60 <sup>1</sup> / <sub>8</sub>	46 <sup>3</sup> / <sub>8</sub>	84 1/4	7 <sup>1</sup> / <sub>4</sub>	9 <sup>1</sup> / <sub>2</sub>	36 <sup>1</sup> / <sub>2</sub>	30 1/2	37	77 <sup>3</sup> / <sub>8</sub>

Size	P	Q	R	S	T	U	W	Shaft Dia.	Keyway	Base Holes
75	49 <sup>1</sup> / <sub>4</sub>	51 <sup>1</sup> / <sub>4</sub>	14	16 <sup>1</sup> / <sub>4</sub>	22 <sup>1</sup> / <sub>4</sub>	31 <sup>3</sup> / <sub>8</sub>	24 <sup>1</sup> / <sub>4</sub>	3 <sup>15</sup> / <sub>16</sub>	1 x 1/2 x 10	1
80	56 <sup>1</sup> / <sub>4</sub>	58 <sup>3</sup> / <sub>4</sub>	16	17 <sup>1</sup> / <sub>8</sub>	25	35 <sup>3</sup> / <sub>4</sub>	27 <sup>1</sup> / <sub>2</sub>	3 <sup>15</sup> / <sub>16</sub>	1 x 1/2 x 10 1/2	1
90	62 <sup>5</sup> / <sub>8</sub>	65 <sup>5</sup> / <sub>8</sub>	17 <sup>3</sup> / <sub>4</sub>	18 <sup>1</sup> / <sub>2</sub>	30	39 <sup>3</sup> / <sub>8</sub>	32 <sup>1</sup> / <sub>2</sub>	4 <sup>7</sup> / <sub>16</sub>	1 x 1/2 x 11	1



Size	Wheel Dia.	TH	BH	UB	DB	TAD	BAU	TAU	B	C	D	E	F	G	H	K	L.I.D.	M
100	71 <sup>1</sup> / <sub>4</sub>	54	7	61 <sup>1</sup> / <sub>2</sub>	47 <sup>1</sup> / <sub>2</sub>	50	65	57 <sup>1</sup> / <sub>2</sub>	47 <sup>1</sup> / <sub>2</sub>	59 <sup>1</sup> / <sub>8</sub>	40 <sup>3</sup> / <sub>8</sub>	44 <sup>1</sup> / <sub>8</sub>	66 <sup>1</sup> / <sub>2</sub>	51 <sup>3</sup> / <sub>4</sub>	90 <sup>7</sup> / <sub>8</sub>	10	40 <sup>1</sup> / <sub>2</sub>	33 <sup>3</sup> / <sub>8</sub>
110	78 <sup>1</sup> / <sub>4</sub>	59	77	67	52	54 <sup>3</sup> / <sub>4</sub>	71	63	52	65	44 <sup>3</sup> / <sub>8</sub>	48 <sup>3</sup> / <sub>8</sub>	73	56 <sup>7</sup> / <sub>8</sub>	98 <sup>3</sup> / <sub>8</sub>	10 <sup>1</sup> / <sub>2</sub>	44 <sup>1</sup> / <sub>2</sub>	36 <sup>7</sup> / <sub>8</sub>
120	85 <sup>1</sup> / <sub>4</sub>	64	83	73	57	60	78 <sup>1</sup> / <sub>2</sub>	69	57	70 <sup>3</sup> / <sub>4</sub>	48 <sup>1</sup> / <sub>4</sub>	52 <sup>5</sup> / <sub>8</sub>	79 <sup>1</sup> / <sub>2</sub>	61 <sup>7</sup> / <sub>8</sub>	106 <sup>3</sup> / <sub>8</sub>	11	48 <sup>1</sup> / <sub>2</sub>	40 <sup>1</sup> / <sub>8</sub>

Size	N	O	P	Q	R	S	T	U	W	Shaft Dia.	Keyway	Base Holes
100	40	83 <sup>3</sup> / <sub>8</sub>	70	71 <sup>1</sup> / <sub>2</sub>	19 <sup>1</sup> / <sub>4</sub>	20	33 <sup>1</sup> / <sub>2</sub>	43 <sup>1</sup> / <sub>2</sub>	35 <sup>3</sup> / <sub>4</sub>	4 <sup>15</sup> / <sub>16</sub>	1 1/4 x 3/8 x 10	1
110	44	90 <sup>7</sup> / <sub>8</sub>	75 <sup>1</sup> / <sub>2</sub>	78	21	22	36 <sup>1</sup> / <sub>2</sub>	47	38 <sup>3</sup> / <sub>4</sub>	5 <sup>7</sup> / <sub>16</sub>	1 1/4 x 3/8 x 10 1/2	1
120	48	98 <sup>1</sup> / <sub>8</sub>	83	84 <sup>1</sup> / <sub>2</sub>	22 <sup>1</sup> / <sub>2</sub>	24	39 <sup>1</sup> / <sub>2</sub>	50 <sup>1</sup> / <sub>2</sub>	41 <sup>3</sup> / <sub>4</sub>	5 <sup>7</sup> / <sub>16</sub>	1 1/4 x 3/8 x 11	1