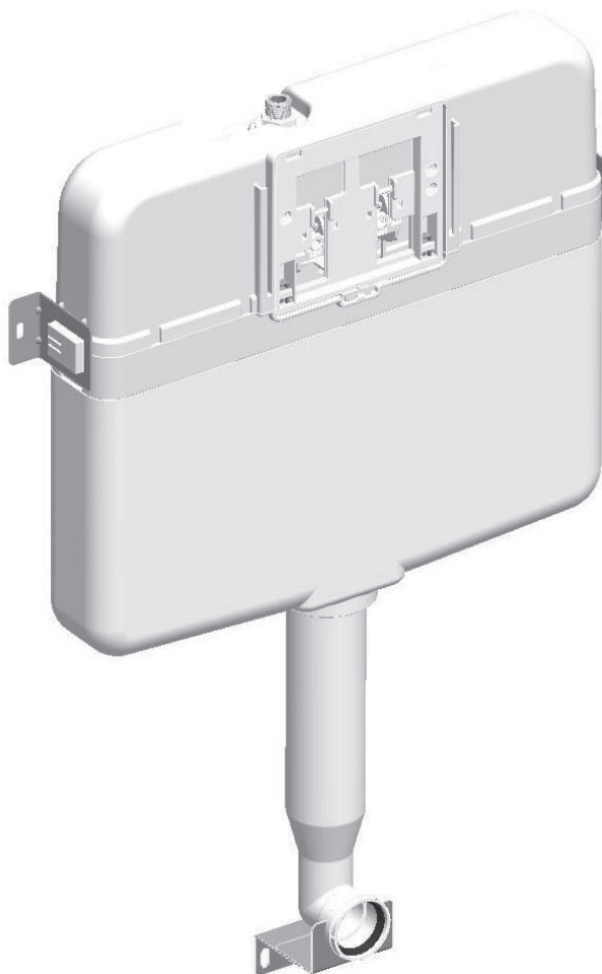


# SIAMP

# INTRASLIM

CONCEALED CISTERN DRY WALL  
RESERVOIR ENCASTRE CLOISON SECHE  
INSTALLATION & MAINTENANCE



# SIAMP



90mm Slim  
Concealed Cistern



Silent  
Function



Anti  
Condensation



Water  
Saving



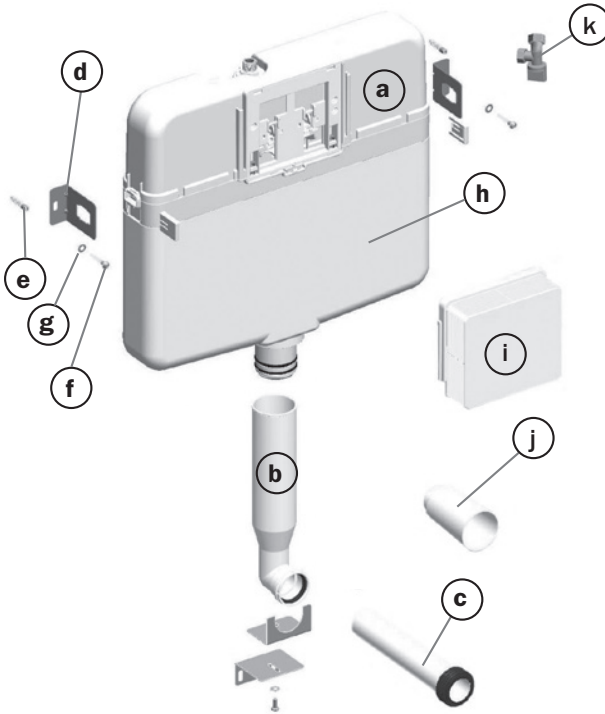
Enjoy  
Installation



Easy  
Installation



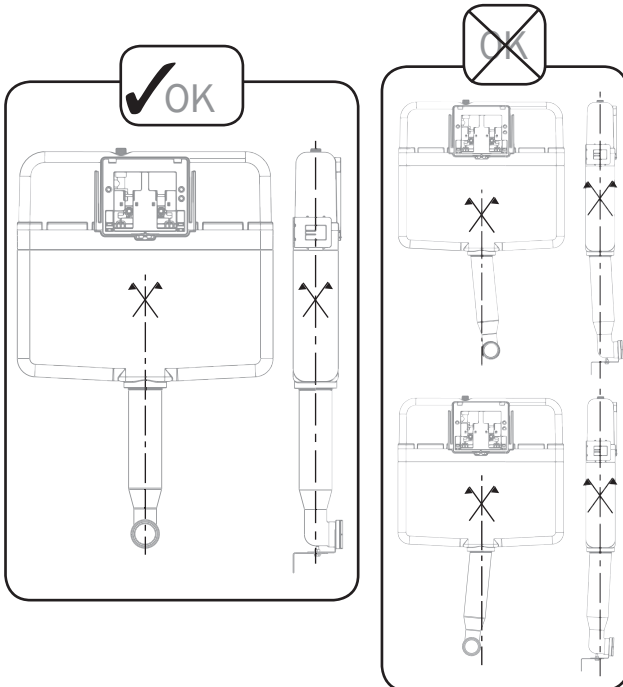
Easy Access  
Maintenance

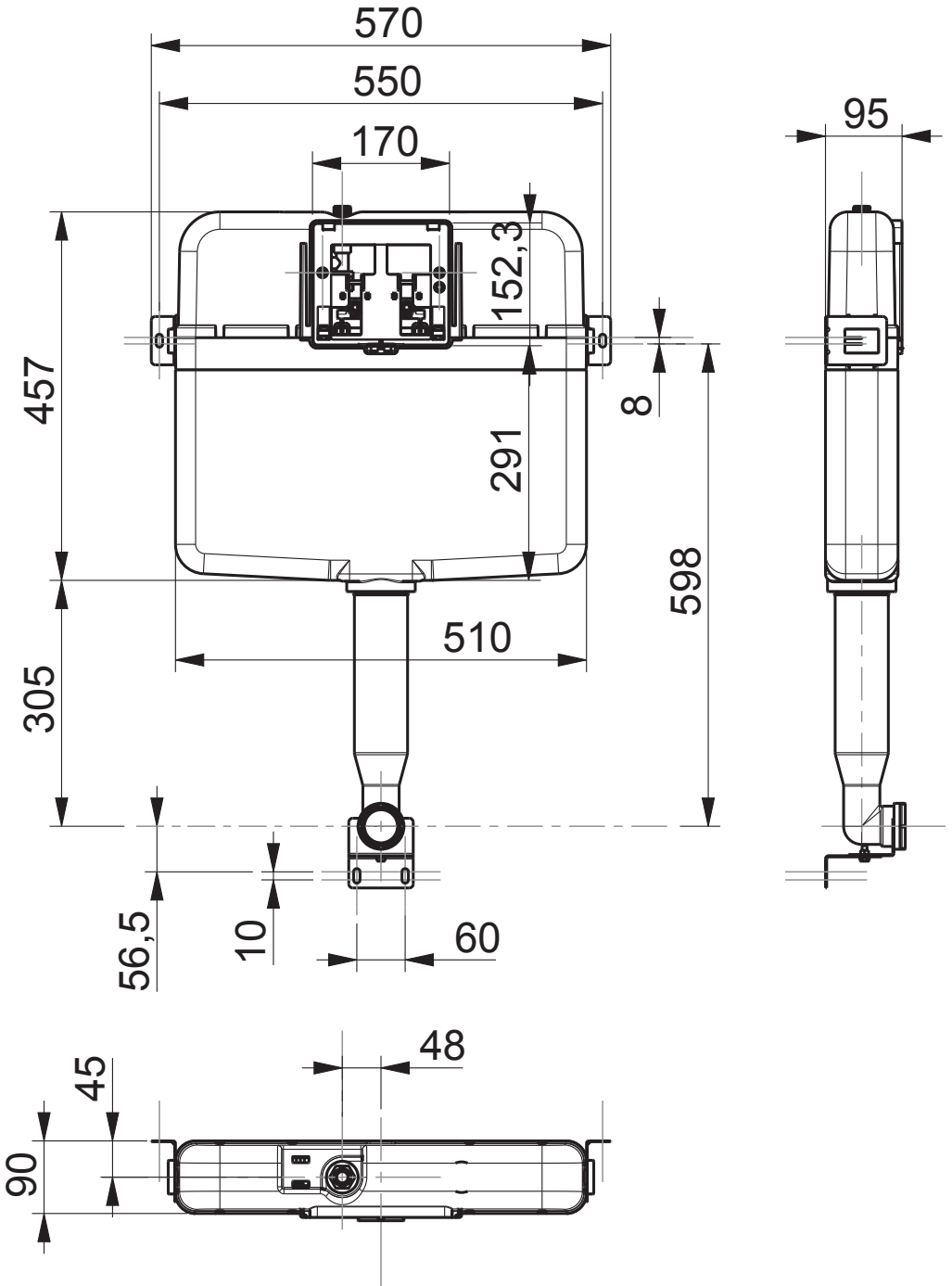
**Tools required:****Advice:**

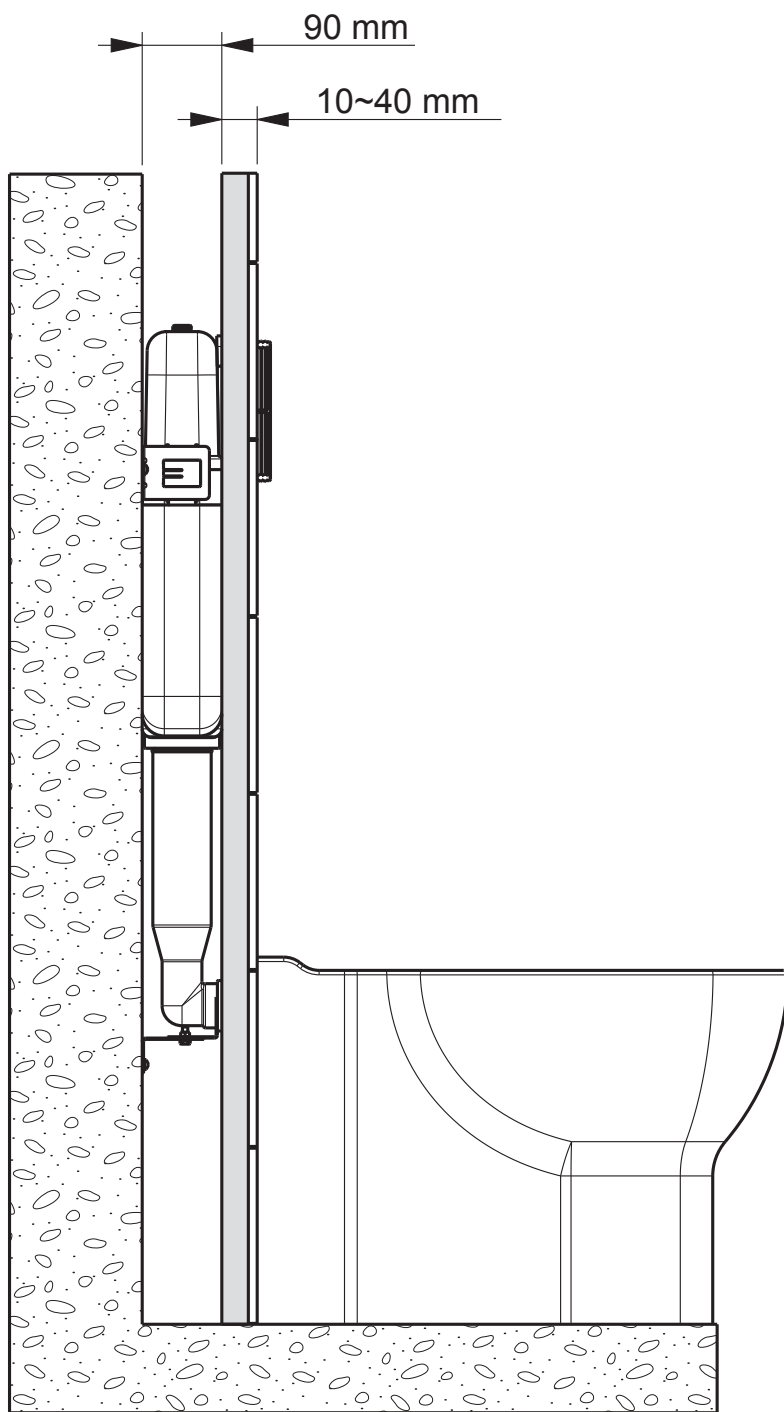
- Keep this notice for any future maintenance
- ⚠ Read the instructions supplied with the bowl, the seat cover, the cistern and the pressurised water supply system before starting installation work.
- ⚠ Before fitting the cistern, the supply pipe should be flushed clear.
  - 1 / The internal Equilibrium valve was designed to be used with clear, non aggressive water supplied under a pressure from 1 bar (15 p.s.i) to 10 bars (150 p.s.i). It is fitted with a filter to prevent foreign bodies from impeding the flow. This filter may require occasional cleaning. Proceed as described page 16.
  - 2 / The internal stop valve should be regularly turned off and on to ensure that it remains serviceable.
- ⚠ Siamp shall not be responsible or liable for improper installation of the product or of any cistern fitting damage caused by the use of cleaners containing chlorine.

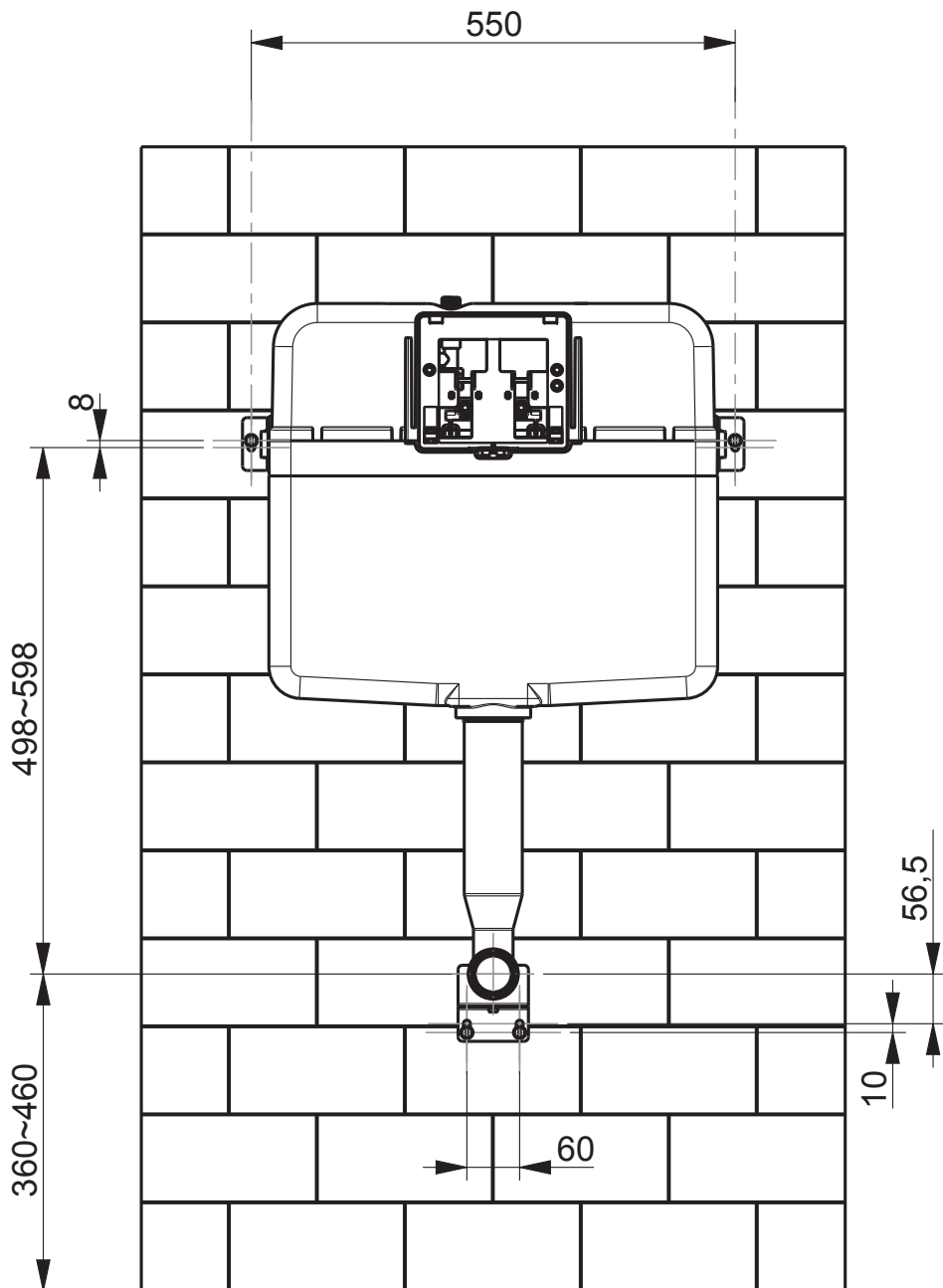
**Conseils :**

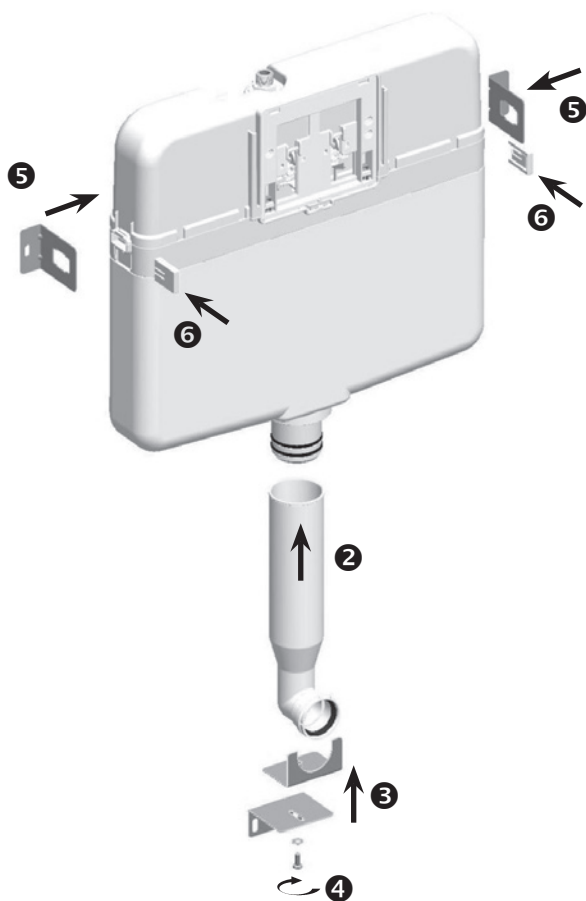
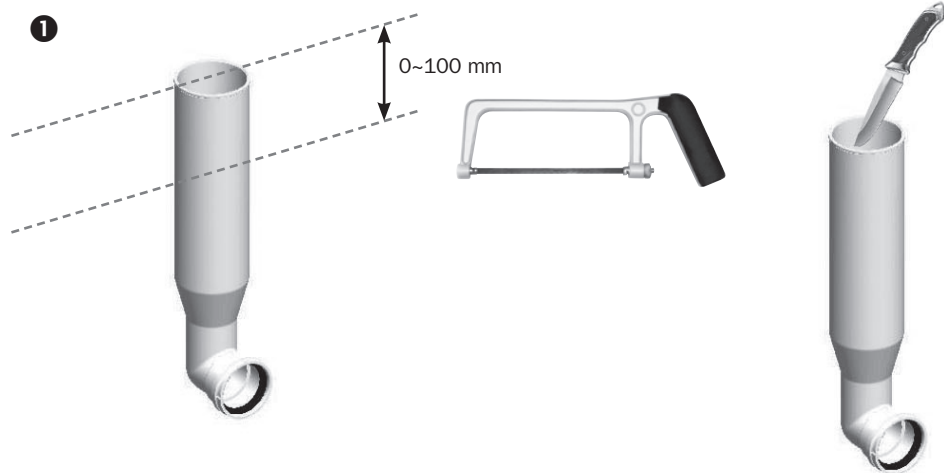
- Gardez cette notice pour de futures interventions.
- ⚠ Lire les notices de la cuvette de WC et de l'abattant avant d'installer ce réservoir. Renseignez-vous sur les caractéristiques de votre réseau d'alimentation en eau.
- ⚠ Purger le réseau d'alimentation en eau avant d'y connecter le réservoir.
  - 1 / le robinet flotteur inclus fonctionne avec de l'eau potable. La pression de fonctionnement doit être comprise entre 1 et 10 bars. Il est équipé d'un filtre pour empêcher les corps étrangers de l'endommager. Ce filtre peut exiger le nettoyage occasionnel. Procédez comme décrit en page 16.
  - 2 / le robinet d'arrêt doit être occasionnellement actionné pour prévenir tout blocage.
- ⚠ Siamp garantit ses produits s'ils sont installés selon ses préconisations. L'emploi de produits d'entretien chlorés est à proscrire.

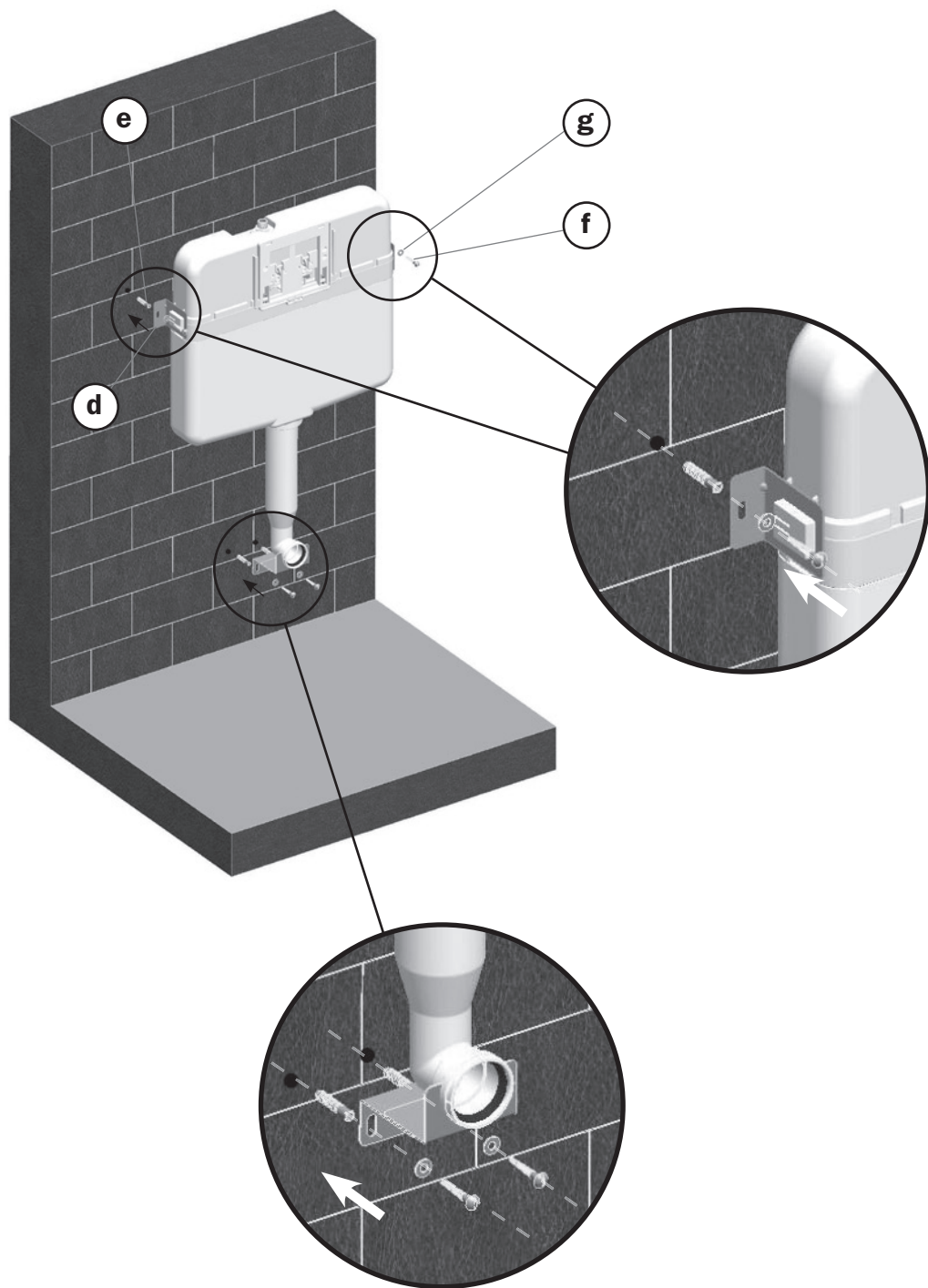


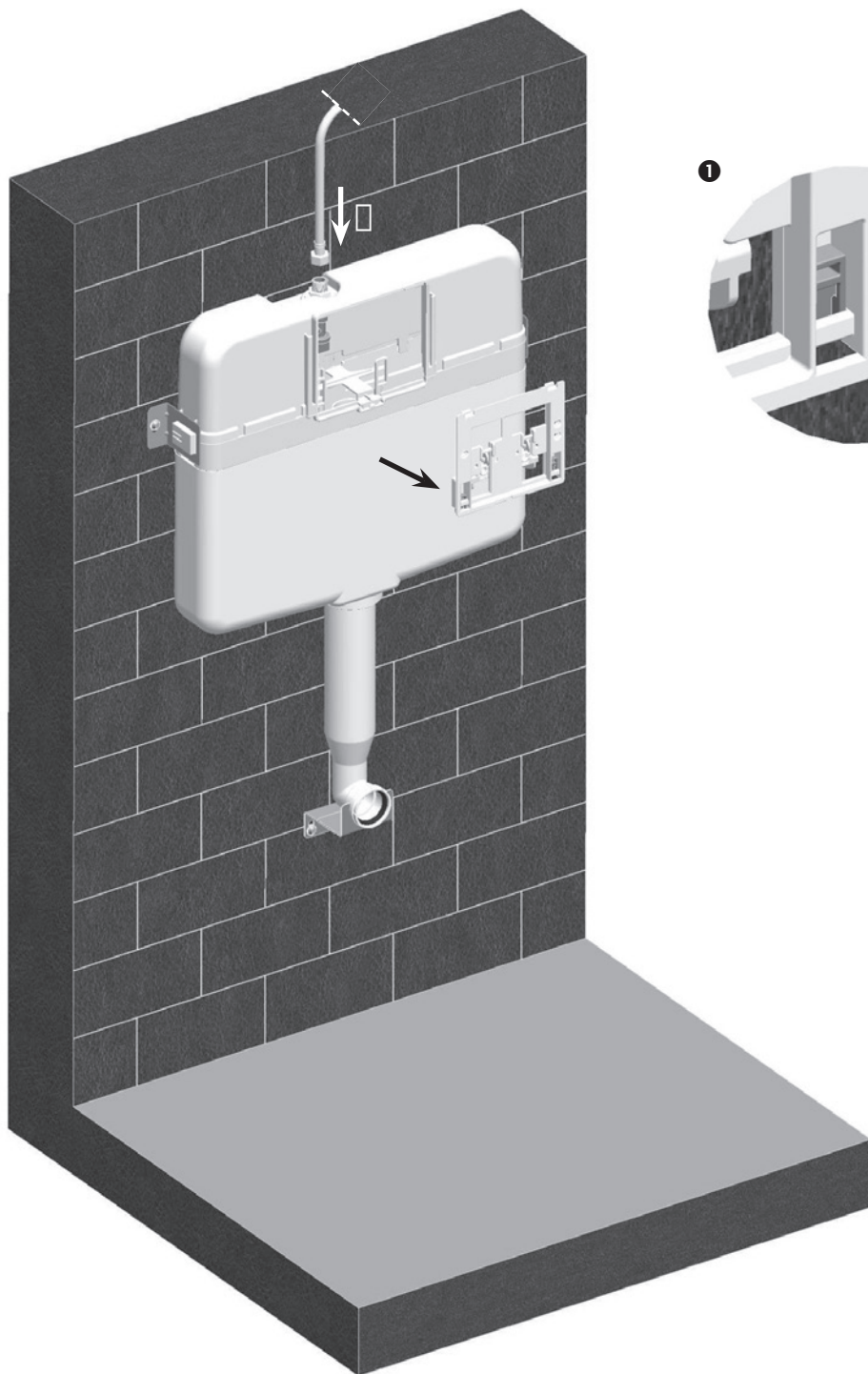




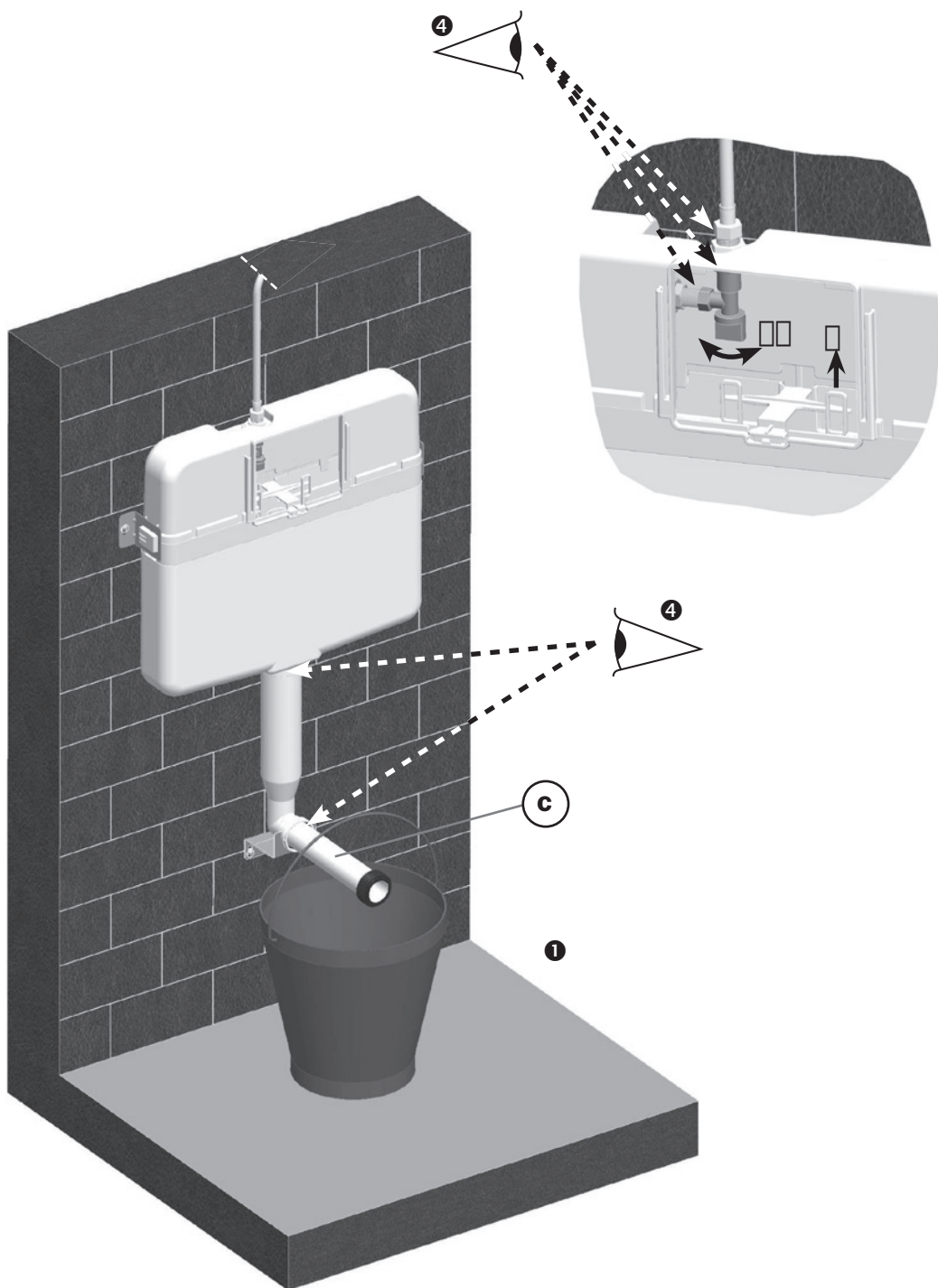


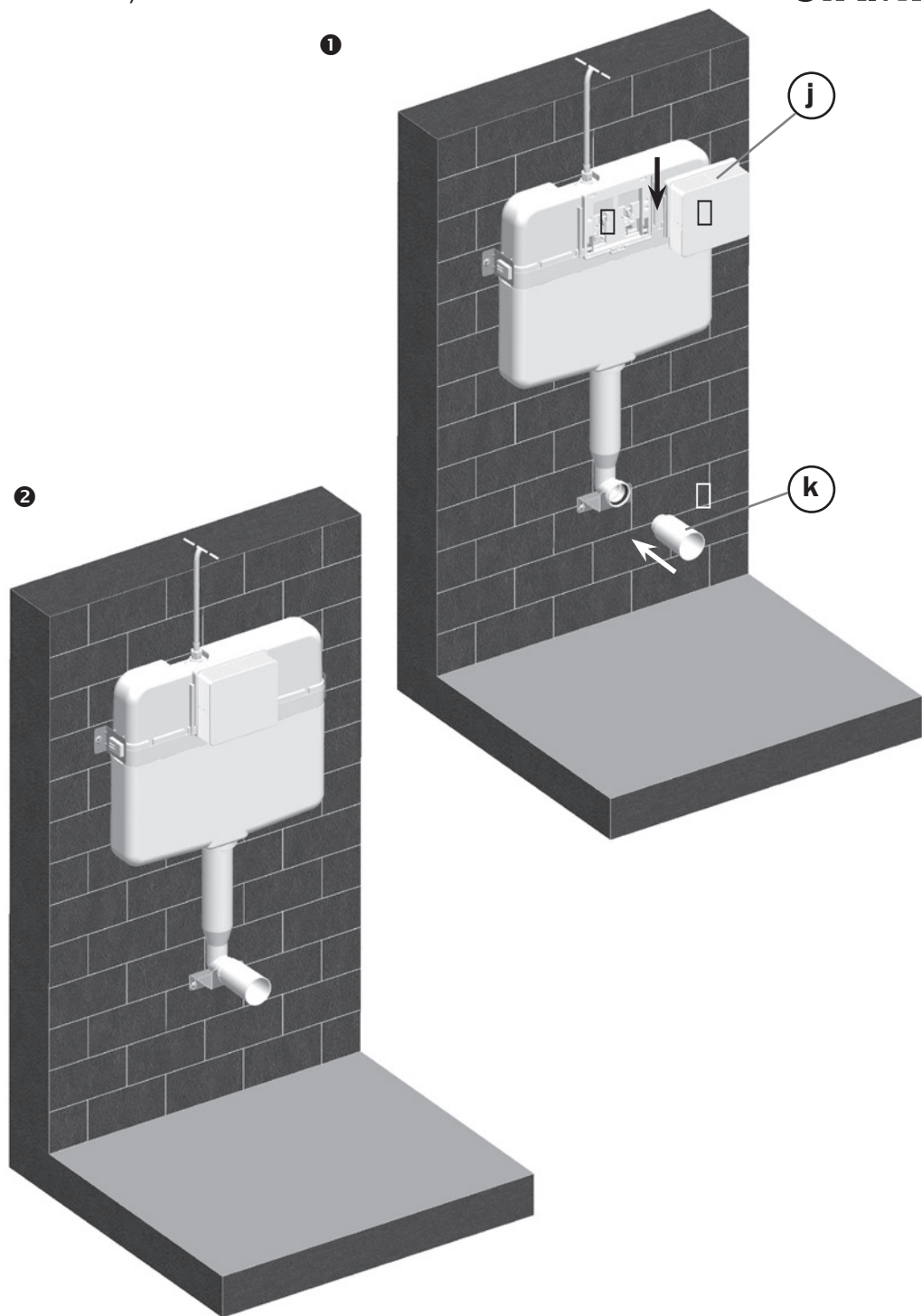


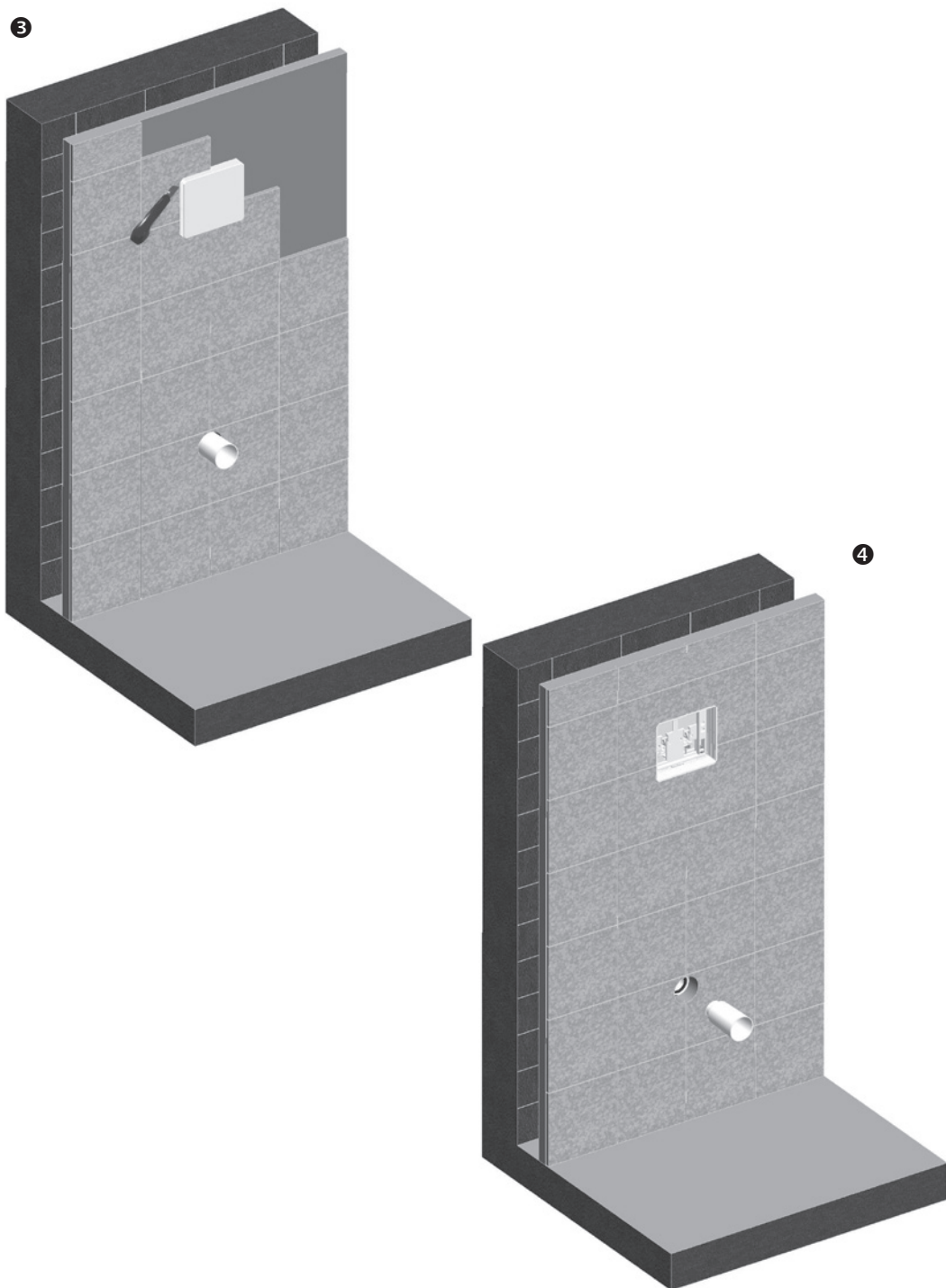


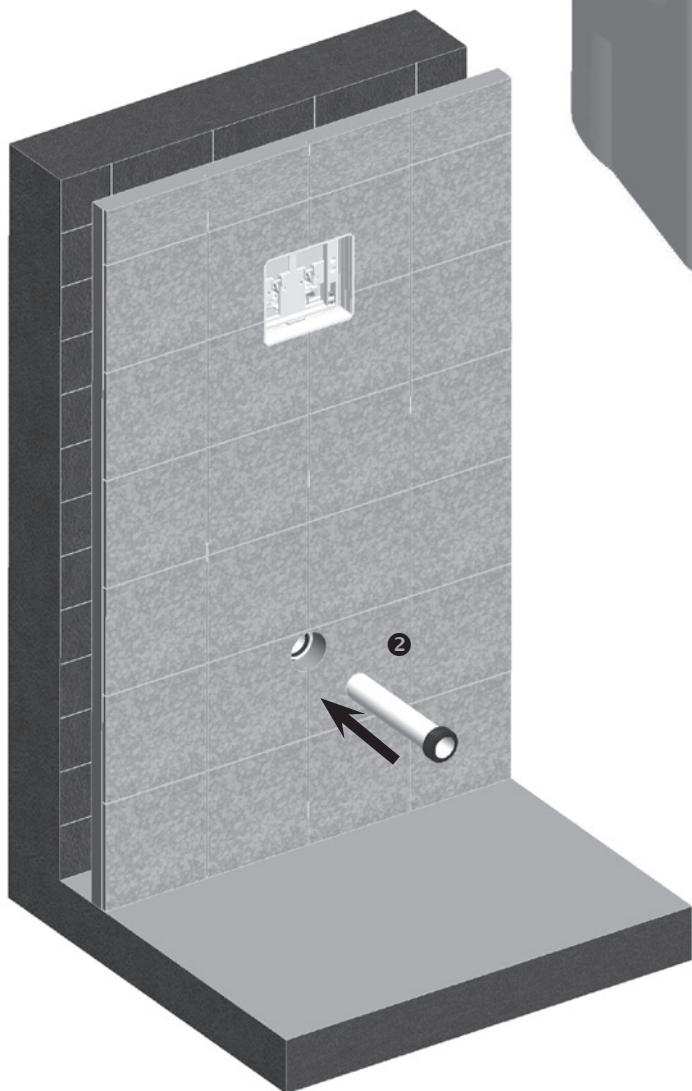
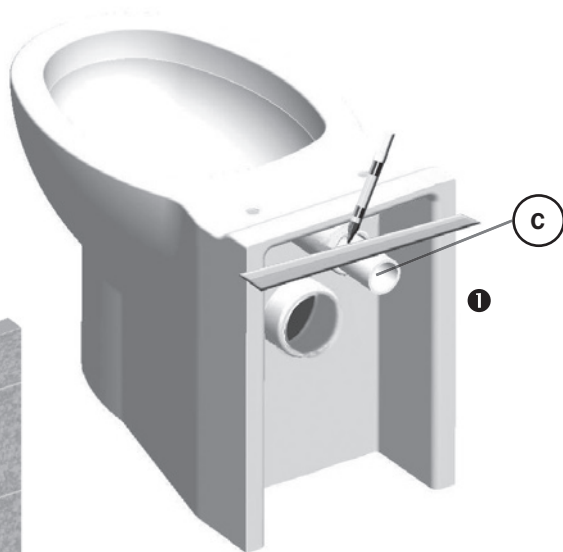
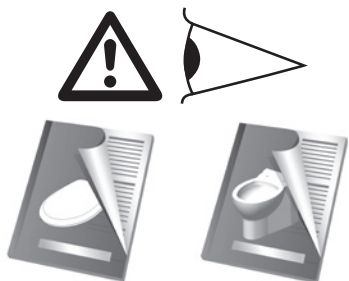


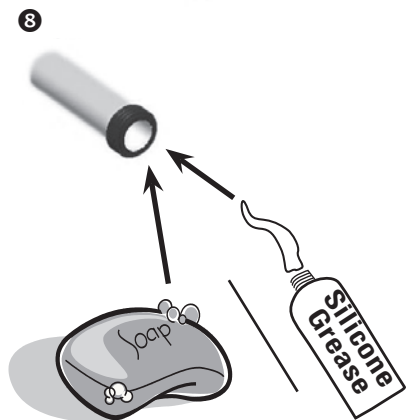
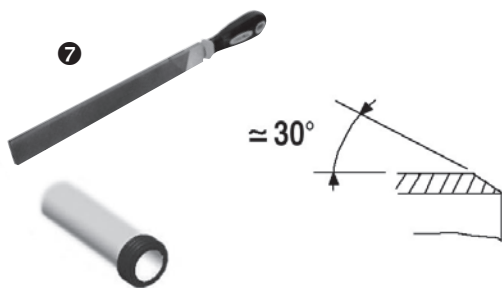
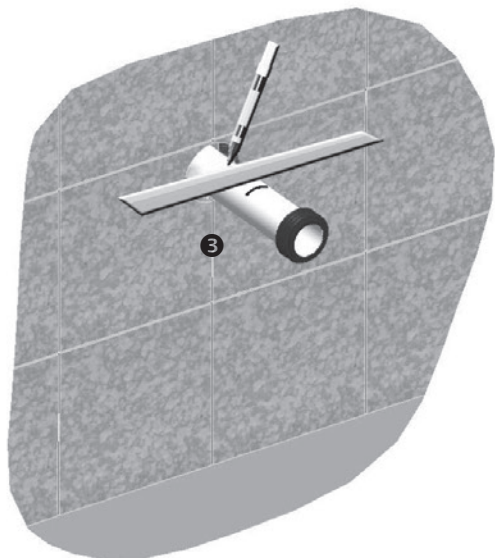






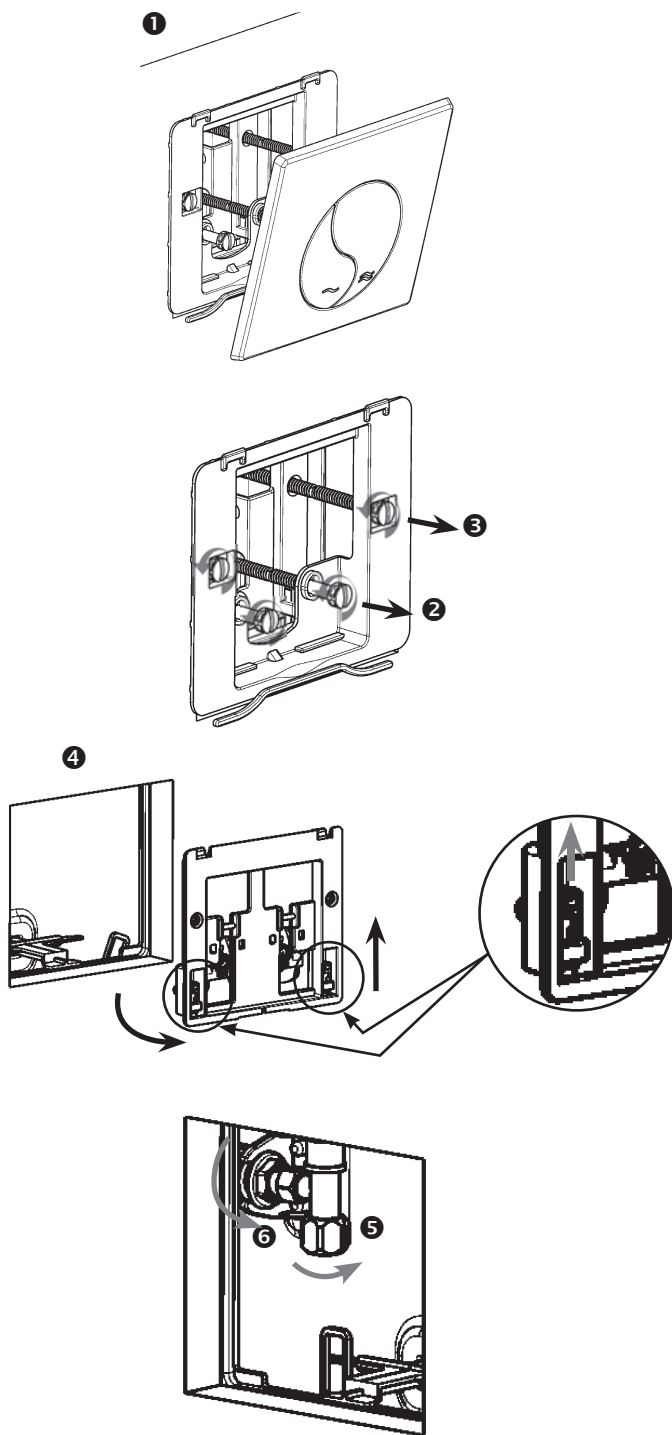


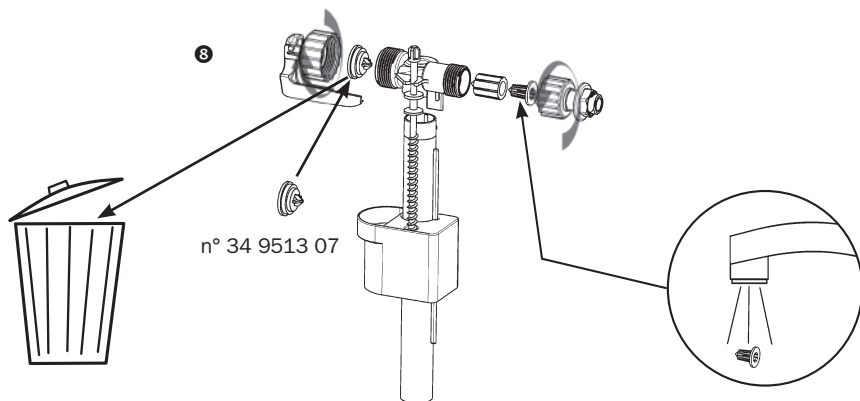
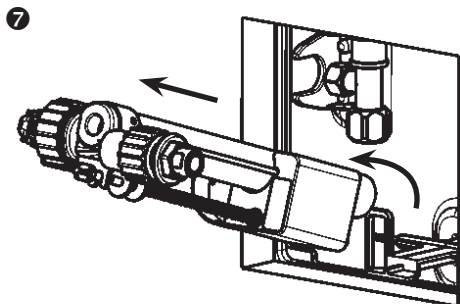






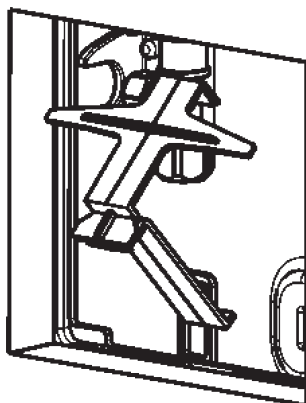






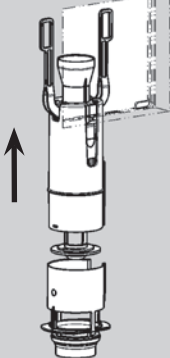


1



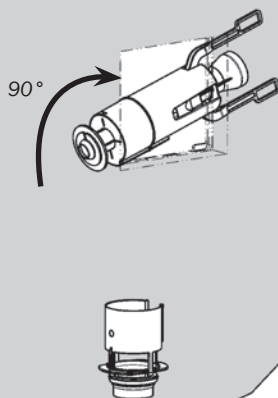
2

a)

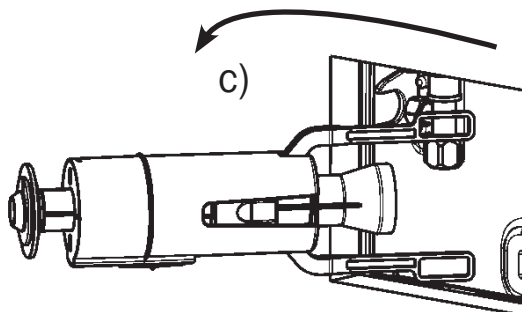


b)

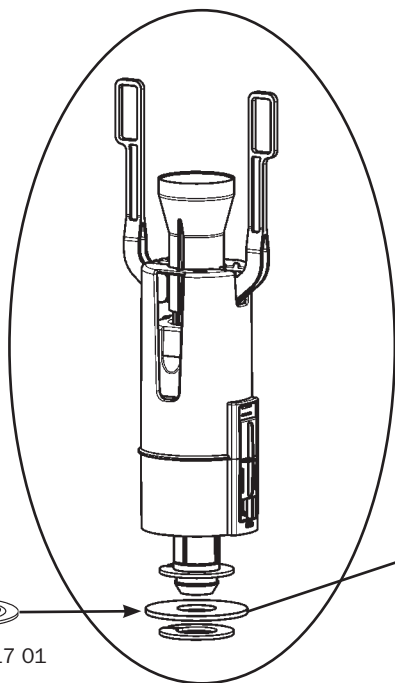
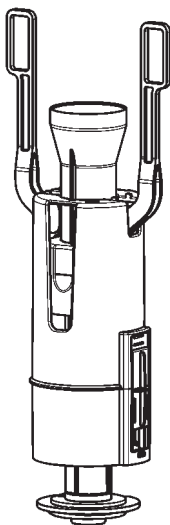
90°



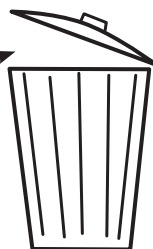
c)



3



n° 34 0317 01







GB: Except rubber parts  
FRA: Hors pièces en caoutchouc.  
CZ: Nevztahuje se na gumové části.  
DAN: Gummidele ikke inkluderet.  
DEU: Gilt nicht für Teile aus Gummi.  
ESP: No incluye las partes de goma.  
GRE: Δεν περιλαμβάνονται τα εξαρτήματα από καουτσούκ.  
H: A gumi alkatrészekre nem vonatkozik.  
LT: Netaikoma dalims iš kaučiuko.  
NER: Rubberen onderdelen niet inbegrepen.  
NOR: Gummideler ikke inkludert.  
PL: Gwarancja nie dotyczy elementów gumowych.  
ROM: Nu include piesele din cauciuc.  
RUS: Гарантия не распространяется на резиновые части.  
SK: Nevztahuje sa na gumené časti.

# SIAMP

---

Siamp Ltd, Unit C2, Meadowbank Business Park, Tweedale Way  
Hollinwood, Oldham, Greater Manchester, OL9 8EH  
T : 0161 681 2120 F : 0161 681 2130 E : info@siamp.co.uk  
Technical support : aftersales@siamp.co.uk W : www.siamp.co.uk