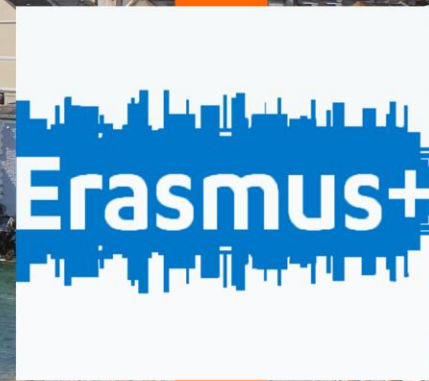


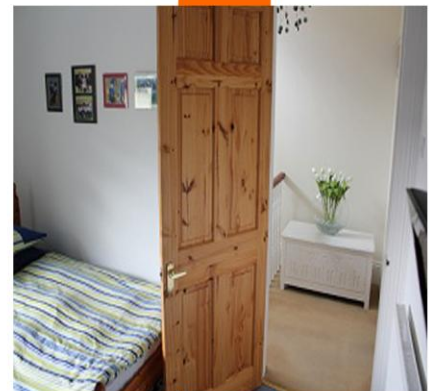
visit <http://www.almondvoclink.co.uk/>

# Almond Vocational Link

Achievement through partnerships



# ACCOMMODATION GUIDE FOR PLYMOUTH 2016







## What is a Host Family Accommodation?

It means living with a native family for the duration of your stay. Your host family will welcome you into their home and share all the facilities with you. You will be staying in a single or shared room, depending on what you choose, and have access to all the shared family space like: kitchen, bathroom, living room, garden etc. This type of accommodation is available for Erasmus Plus students as well as professionals who truly want to experience the English way of living. All of the host family homes are vetted by us to ensure that our students stay in accommodation of high standard.

## Why do we recommend Host Family Stay?



*"The quality of my accommodation is great! My host family is extremely nice, kind and welcoming. We have gone for walks, talk in the evenings for hours. They are great people and we get along extremely well."*

*Ance from Latvia*

Living with native speakers will improve your English language skills dramatically and increase your understanding of culture and traditions. Being away in a foreign country can be difficult at first, but it's extremely comforting to have someone you can turn to if you need help, especially when it comes to finding your way around the city. Your host family will assist you with transport on your day of arrival as well as on the day of your departure. It is likely that there will

be other students living with your host family as most of them offer more than one bedroom to let, so it is a great way to meet new friends from other countries. Our families are used to hosting students of many different nationalities, cultural and religious backgrounds, with special diets and health requirements, so please do not hesitate to inform us of your requirements, we are always happy to help.

### **Almond Vocational Link Ltd**

City Business Park, Somerset Place, Plymouth, Devon, PL3 4BB

Tel. +44 (0) 1752 224446 | [www.almondvoclink.co.uk](http://www.almondvoclink.co.uk) | email: [janetw@almondvoclink.co.uk](mailto:janetw@almondvoclink.co.uk)

Registered Company Number 6940166

| Page 2



### Half Board Accommodation

You will be living with one of our host families in a choice of single or shared room. Internet access is available and included in the price quoted. Your Host Family will provide you with a breakfast in the morning and cooked dinner and a dessert after you come home in the afternoon. You will have to provide your own lunch, either by buying your own ingredients and making it at home, using the cafe at your work placement or buying it from a shop on your way to work. This gives you a great flexibility during the lunch hour. Breakfast usually consists of cereal and toast.

### Full Board Accommodation

This option offers you access to the same facilities as mentioned above in the Half Board accommodation. In addition to breakfast and dinner, your host family will also provide you with packed lunch to take to work. Packed lunch usually consists of sandwiches or salad, bottle of water and fresh fruit. Full Board accommodation is a great value for money option and a very good choice for younger students.



*The host family house was very beautiful, comfortable and clean. The area around my house was so typically English! I liked the food, it was always delicious and there was plenty of it. Almond did a great job; I would recommend this organisation to my friends! "*

*Talking about his time in Plymouth: Lajos from Hungary*

**Almond Vocational Link Ltd**

City Business Park, Somerset Place, Plymouth, Devon, PL3 4BB

Tel. +44 (0) 1752 224446 | [www.almondvoclink.co.uk](http://www.almondvoclink.co.uk) | email: [janetw@almondvoclink.co.uk](mailto:janetw@almondvoclink.co.uk)

Registered Company Number 6940166





## Self Catering Accommodation

This option is split into two sections: Self Catering in a host family accommodation or Self Catering in a student house. It is suitable for those staying long term (3months +) or arriving in small groups. The accommodation consists of a shared kitchen and bathroom with choice of single and shared rooms. You will have access to internet included in the price and in some cases live without host family on site. All bills are included in price, however you will be responsible for purchasing your own cleaning products, towels, laundry materials and other essentials like coffee, tea, sugar etc. This type of accommodation allows you to cook your own meals but bear in mind that the kitchen is shared with other students. Self Catering Accommodation is essentially a large family home which you will share with other 4-5 students, it offers a lot of independence but also commands a great responsibility. In some cases Self Catering is also available within Host Families. This allows you to prepare your own meals independently but also gives the comfort and security of living with a host family.

### What to take with you when staying with a host family:

- Positive attitude and a smile
- Plug socket convertor from Europe to UK
- Raincoat

### What you do not need when living with a host family

- Bedding
- Blankets
- Pillows

### Optional:

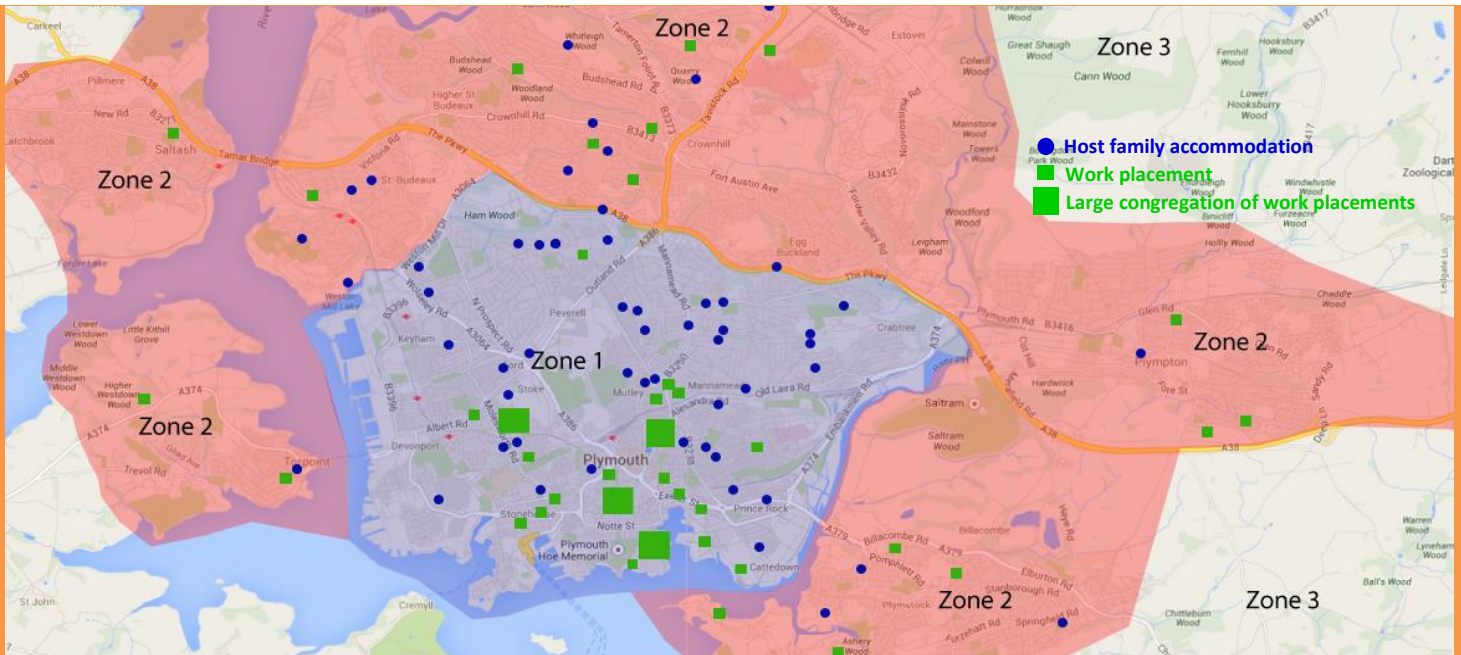
- Hairdryer
- Towels

#### Almond Vocational Link Ltd

City Business Park, Somerset Place, Plymouth, Devon, PL3 4BB

Tel. +44 (0) 1752 224446 | [www.almondvoclink.co.uk](http://www.almondvoclink.co.uk) | email: [janetw@almondvoclink.co.uk](mailto:janetw@almondvoclink.co.uk)

Registered Company Number 6940166



## Location

The map above shows our accommodation in Plymouth area. As you can see below, there is a close proximity between work placements and host accommodation depending on your requirements. We always try to accommodate our students as near as possible to their work experience placements but we also must take under consideration all of your requirements given in the registration form and our host family ability.

We recommend that you purchase a Zone 1 & 2 bus pass for easy transport around the city for work or on your days off. Please note, our list of host families grows and changes continuously, the above map is just for presentation purposes. The map also only includes our most popular choices for work experience placements and increases depending on the demand and requirements.

## Hotel and B&B accommodation

We offer a booking service for all our partners and teachers who come to Plymouth for a project meeting, mobility project, training session or monitoring visit. There are many options available depending on your budget and needs.

Almond Vocational Links works with many popular Plymouth Hotels and Bed & Breakfasts located conveniently close to the City Centre. Please get in touch to arrange your stay.

### Almond Vocational Link Ltd

City Business Park, Somerset Place, Plymouth, Devon, PL3 4BB

Tel. +44 (0) 1752 224446 | [www.almondvoclink.co.uk](http://www.almondvoclink.co.uk) | email: [janetw@almondvoclink.co.uk](mailto:janetw@almondvoclink.co.uk)

Registered Company Number 6940166



NEW BROCHURES  
PLYMOUTH 2015/2016

FOR ERASMUS PLUS  
PARTNERS & STUDENTS



## Our Team

Please contact us to receive our brand new information brochures on cultural trips, English language training, work experience placements and KA1 staff training courses. Our international team are always happy to help you organise your stay in the UK and make the experience memorable and hassle free.

### **Managing Director**

### **European Project Manager**

**Janet Wonnacott – [janetw@almondvoclink.co.uk](mailto:janetw@almondvoclink.co.uk)**

For enquiries in English and German

Petra Nesbit – [petra@almondvoclink.co.uk](mailto:petra@almondvoclink.co.uk)

*Senior Administrator*

For enquiries in English and Polish

Kamila Bielawska – [kamilab@almondvoclink.co.uk](mailto:kamilab@almondvoclink.co.uk)

*Marketing and Design Coordinator*

For enquiries in English, Italian and French

Valentina Pellé- [valentinap@almondvoclink.co.uk](mailto:valentinap@almondvoclink.co.uk)

*Marketing Assistant*

For enquiries in English and Lithuanian

Gabriele Mikionyte – [gabrielem@almondvoclink.co.uk](mailto:gabrielem@almondvoclink.co.uk)

*Administrative Assistant*

### **Almond Vocational Link Ltd**

City Business Park, Somerset Place, Plymouth, Devon, PL3 4BB

Tel. +44 (0) 1752 224446 | [www.almondvoclink.co.uk](http://www.almondvoclink.co.uk) | email: [janetw@almondvoclink.co.uk](mailto:janetw@almondvoclink.co.uk)

Registered Company Number 6940166

