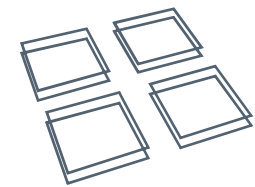




waterfront architecture portfolio

studio four architects ltd
www.studiofourarchitects.com



ROMSEY

WINCHESTER

SOUTHAMPTON



our work



beachside café
durley chine, bournemouth



new floating clubhouse
brighton marina yacht club



sailing club
netley, southampton



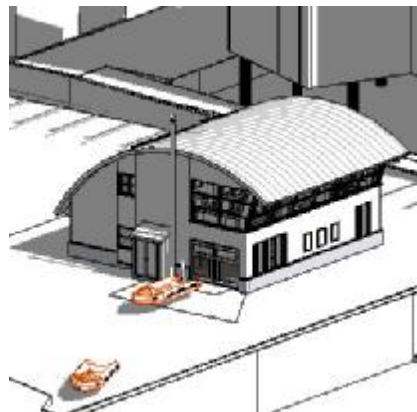
RNLI lifeboat station
llandudno, north wales



RNLI lifeboat station
coves, isle of wight



RNLI lifeboat station
hayling island, west sussex



RNLI lifeboat station
eastbourne, east sussex



berry head road
brixham, devon



watch house,
lepe, hampshire



RNLI lifeboat station
margate, kent



waterfront housing 1
netley abbey, southampton



waterfront housing 2
netley abbey, southampton

practice profile

Studio Four Architects is a medium-sized architectural practice based in Hampshire. With offices in Romsey and Winchester and a staff of around 30, we can provide a reliable and well-resourced service. We listen to our clients and provide solutions which meet budget and operational needs with design flair. We foster relationships of co-operation with all members of the design and construction team. We respond quickly and provide staff who are knowledgeable and confident in dealing with design and detail issues.

We are proud that the majority of our work is from our Clients returning again and again, showing the high level of satisfaction and good working relationships we strive to achieve.

Studio Four Architects was founded in 1992 in Romsey by George Rankin and Nick Lockyer, with Mike Brownlow joining in 1993. The practice has steadily expanded its base and workload, enjoying a wide variety of projects. Alongside significant healthcare experience, we have completed many projects in other sectors including education, housing, leisure, retail/ commercial, church and community-based schemes. The Winchester office was opened in 1997 to serve a growing number of clients in the Winchester area. Both offices work together to share resources, expertise and training opportunities.

In 2012, Studio Four Specialist Projects was formed to provide services focused around conservation, specialist architectural projects and building surveying.

In 2013 the practice merged with Chris Edmond Associates, architects and interior designers, based in central Southampton. Chris Edmond Associates has provided Architect's services for over 30 years to clients in Southampton and the surrounding counties. These have included developers, housing associations, local authorities, private businesses and householder clients. Whilst specialising in the residential market with projects ranging from inner city apartments to bespoke high quality houses, the practice also works with urban renewal projects, listed buildings and has designed a number of community buildings including yacht clubs, golf clubs and commercial start-up units.

A wide range of architectural services are provided for all project stages, including:

- Planning opportunities and feasibility studies
- Brief preparation
- Full architectural duties
- Design team leadership
- Principal Designer duties
- Design & Build co-ordination
- Site inspection
- Interior design
- Maintenance advice
- Physical models and 3D modelling
- Measured surveys
- dilapidation and/or condition surveys
- Party Wall matters
- Listed Building Refurbishment & Development
- Accessibility reports



Beachside Café, Durley Chine, Bournemouth

Rob's Event Catering, who already operated the kiosk at the Chine, had won Bournemouth Borough Council's competition to develop and operate a new facility at this busy location.

Working very closely with these clients, a comprehensive scheme with a nautical theme was successfully submitted for Planning permission. A café, takeaway kiosk, first floor terrace bar, beach shop, public conveniences and Council Beach Office were all accommodated, with 3-D images being produced for public consultation and the media.

The building opened in the summer of 2015.



New Floating Clubhouse, Brighton Marina Yacht Club

The Brighton Marina owners, Brunswick Developments, had offered the Yacht Club a new floating clubhouse and agreed a Design & Build procurement package with Intermarine Ltd of Southampton, a marina pontoon manufacturer.

Within a strict budget Studio Four worked closely with the Club and the Local Authority to develop a scheme that met all the various criteria for this 350sqm floating building, one of the largest in the UK.

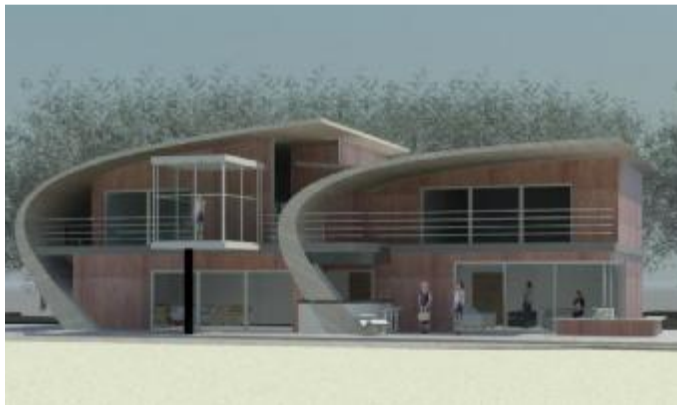
For delivery access, assembly of the pontoon structure and construction of the building was carried out at the eastern end of the marina, with the clubhouse then delicately towed to its final location.



Netley Sailing Club, Southampton

Our Southampton office was asked to prepare a feasibility for the replacement of the existing sailing club on Southampton water, adjacent to a public park.

A traditional, futuristic scheme was produced for consideration by members.



RNLI Lifeboat Station, Llandudno, North Wales

The design for this new station represents the culmination of discussions with the Local Authority, local representatives, the Design Commission for Wales and, most importantly, the Llandudno RNLI lifeboat crew.

The proposed scheme is based on one of the new 'Catalogue' lifeboat stations designed with Revit software by Studio Four in partnership with the RNLI.

The station is for a brand new Shannon-class all-weather lifeboat which will be co-located with an inshore D-class lifeboat. Both will be launched down the beach, a significant improvement to the current situation which requires the entire existing rig to be driven through the town centre to launch on the busy promenade.

Photomontages - Studio Four & Olive Creative



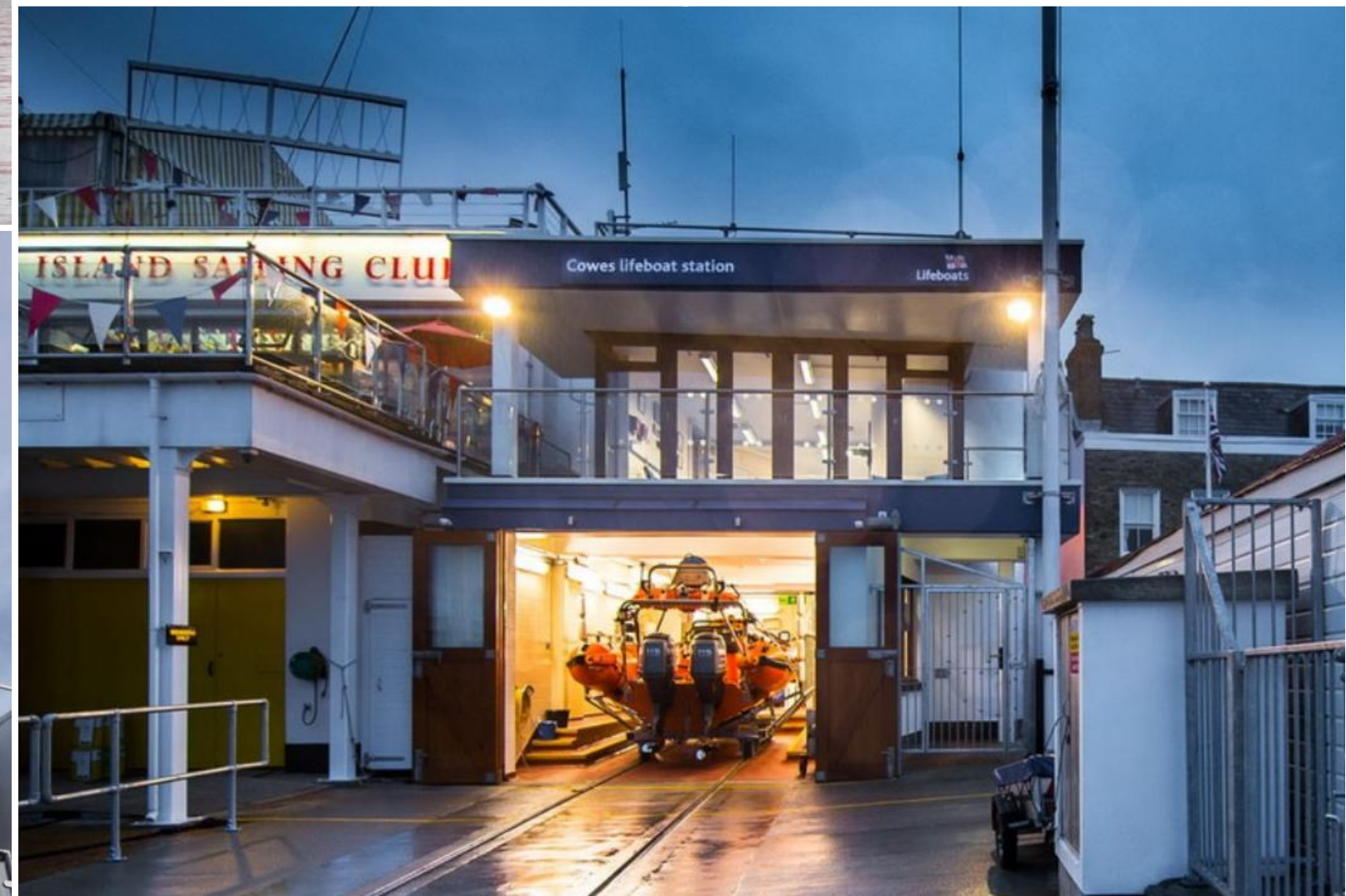
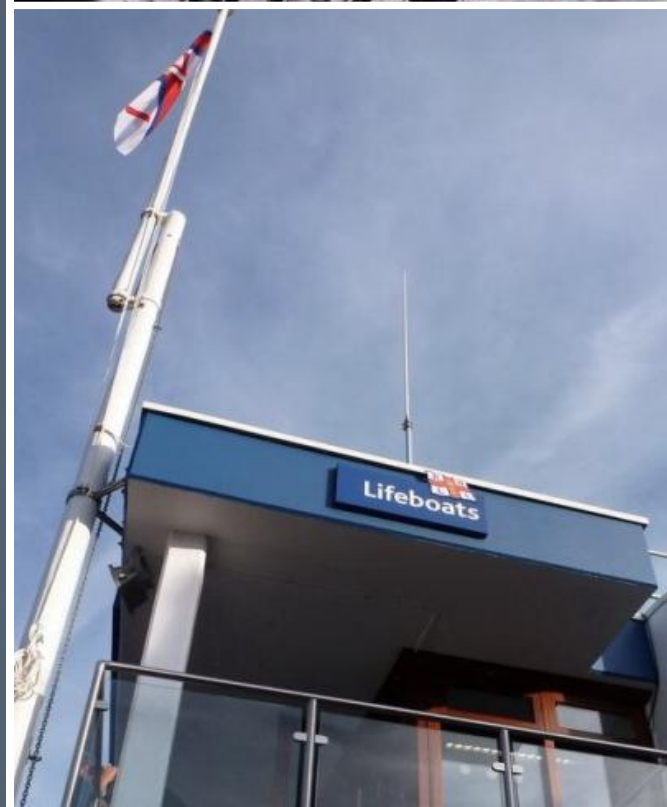
RNLI Lifeboat Station, Cowes, Isle of Wight

The RNLI approached Studio Four to design a new lifeboat station for 'sailing capital' Cowes. The Institution had recently taken over the independently-run Cowes Inshore Lifeboat, which had no lifeboat station of its own, and had acquired the vacant 'old Custom House' within this the local Conservation Area, overlooking the entrance to the River Medina.

This site needed to accommodate a new B-class Atlantic 85 inshore lifeboat, allowing a rapid launch at any time into the tidal mouth of the river.

The final scheme included a new lightweight steel slipway with rails to launch the boat on a trolley. The domestic character of the building's rear was maintained, introducing to seaward a modern and functional frontage; the lifeboat and crew could now operate as efficiently as possible whilst maintaining the Right of Way across the apron.

The building was opened by Her Majesty The Queen on 25 July 2012, the last day of her Diamond Jubilee tour.



RNLI Lifeboat Station, Hayling Island, West Sussex

The remit required extending the existing lifeboat station, on the east coast beach of Hayling Island and in an SSSI, to provide a much larger boathouse. Part of the existing rendered building was to be retained with the new cedar-clad extension cutting across the southern end.

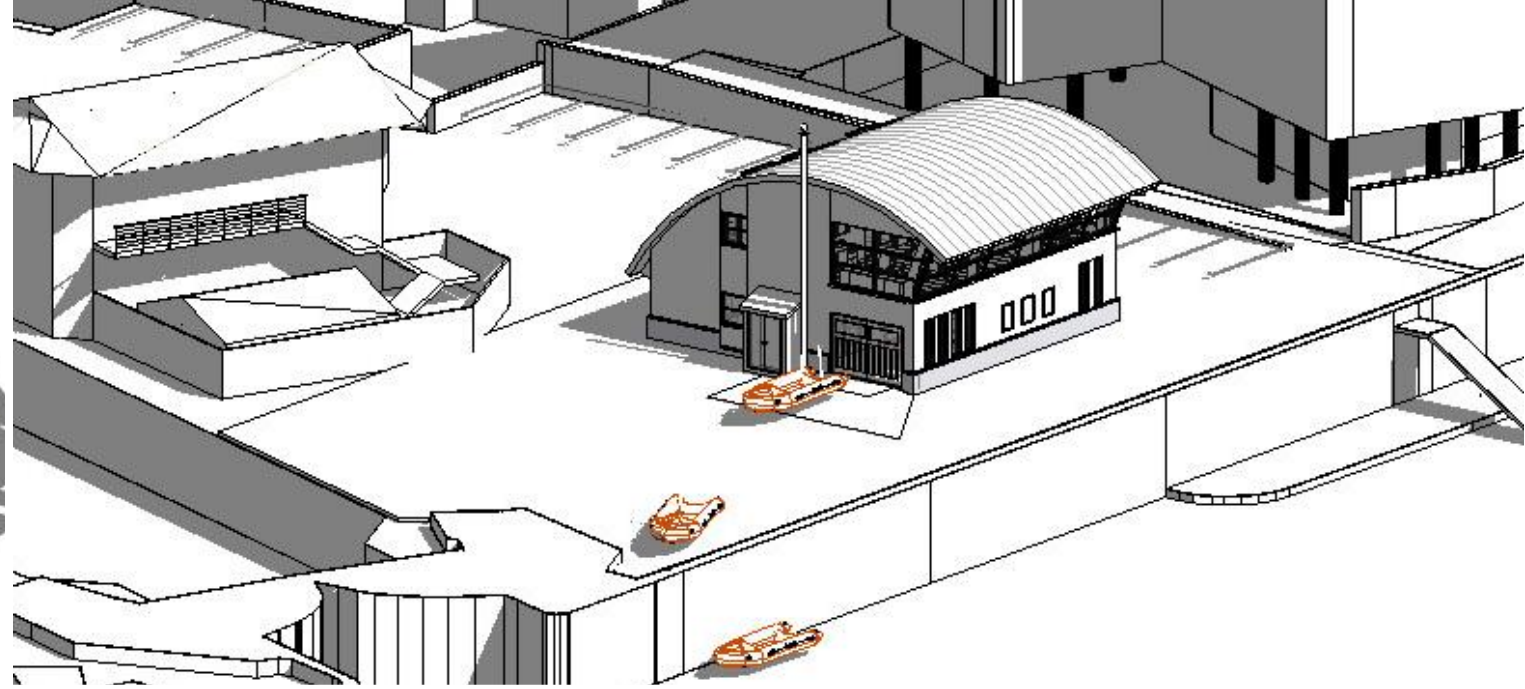
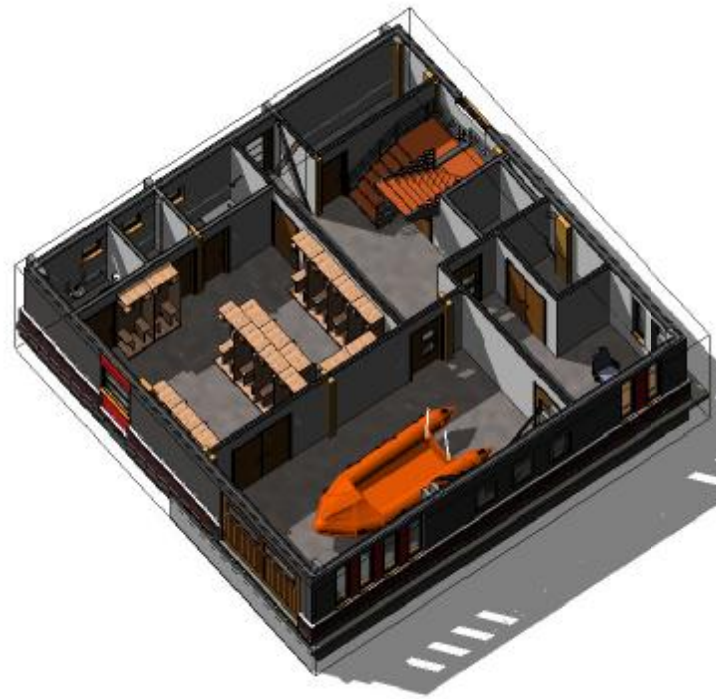
The new Boathouse accommodates both a D Class and an Atlantic 85 lifeboat, both launched via a tractor and trailer. A new larger Changing Room is situated to the rear of the old Boathouse with a Store and RNLI Information Point to the front. A Crew Room is provided above the Boathouse alongside a high-tech Training Room.



RNLI Lifeboat Station, Eastbourne, East Sussex

Design proposals for a new replacement RNLI lifeboat station at Eastbourne's Sovereign Harbour Marina, providing immediate cover response for both inshore and offshore areas.

The station will house a D Class boat which will be lowered into the harbour to answer inshore calls. For offshore calls the crew will take a tender out to the Tamar Class ALB Lifeboat Diamond Jubilee moored in the harbour.

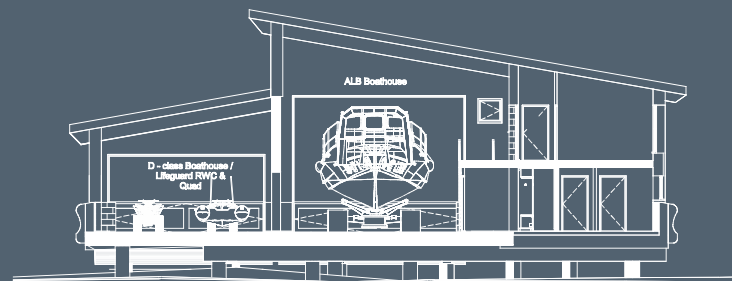


RNLI Lifeboat Station, Margate, Kent

On behalf of the Institute, Studio Four has submitted a design for a new RNLI Lifeboat Station on Margate Beach.

The new boathouse provides much-needed space and incorporates a public viewing area; it is elevated above the beach outside the flood defences and the new flood defence wall, wrapping around the new building.

The proposal intends to contribute to the regeneration of the area, whilst its location allows for a high-profile interaction with the public.



Berry Head Road, Brixham, Devon

Our Southampton office was requested to design a new contemporary house on a cliff top location with panoramic views across Torbay.

The surrounding buildings are large Victorian Villas made with local stone and white render. Care has been taken to design a modern building exploiting the exceptional views, whilst using a palette of local materials and building form to help integrate the development into the local environment.

The scheme includes a large glazed living room and lookout, designed to make the most of the panoramic views. The house is to be split-level, providing the client with a large, five bedroom house.



Watch House, Lepe, Hampshire

In the summer of 2014 Studio Four Specialist Projects was appointed to design the refurbishment works for a unique property on the sea front in Lepe.

The proposals provide 2 bedrooms and a bathroom / WC on the ground floor. At first floor a large kitchen, dining and sitting area are created with a bay window overlooking the sea.



Waterfront House 1, Netley Abbey, Southampton

This new build house sits on an exceptional site overlooking Southampton Water and the New Forest beyond.

The house is designed around a 2 storey central glazed staircase, with the front block as an open-plan layout. The first floor has 3 bedrooms, with the master bedroom and balcony distinctly projecting beyond the ground floor.

With the introduction of timber louvered panels, this elevation is broken into glazing and white rendered walls, set in different planes from the glazed facades.



Waterfront House 2, Netley Abbey, Southampton

The house is designed around a 3 storey central glazed staircase, with only the central area raised to the third floor, to fully appreciate the views west from the house. The garden is enclosed with a single storey-linked swimming pool.

The open-plan ground floor contains the lounge, dining room and kitchen. A self-contained suite and garage form the frontage elements. The first floor has an open landing lounge, serving the four bedrooms, with a further staircase leading to the master bedroom on the top floor.

The building's impact relies on its simple facades and a projecting flat roof, with double-height glazing and rendered walls. Internally, the site commands views overlooking Southampton Water and the New Forest beyond.



contact

Romsey

Tollgate Estates
Stanbridge Earls
Romsey
Hampshire
SO51 0HE
Tel: 01794 511255
Email: romsey@s4architects.co.uk
Website: www.studiofourarchitects.com

Winchester

Sherwood House
8 Upper High Street
Winchester
SO23 8UT
Tel: 01962 820255
Email: winchester@s4architects.co.uk
Website: www.studiofourarchitects.com

Southampton

1-3 Lyon Street
Southampton
Hampshire
SO14 0LD
Tel: 02380 228923
Email: southampton@s4architects.co.uk
Website: www.studiofourarchitects.com



Who we are



Romsey Directors (clockwise from top left)
Stephen Hole, Philip Amey, Peter Barnett



Winchester Director
Michael Brownlow



Southampton Director
Gareth Jenkins



Studio Four Architects Ltd is a RIBA chartered practice and part of the CIAT Group Membership Scheme

