



CATTORPE
MANOR ESTATE
COUNTRY HOUSE HOTEL & RESTAURANT



Conference Facilities

Meetings & Conferences

Catthorpe Manor Estate is located between Rugby and Lutterworth, at the heart of the UK's road and rail network, just minutes from the M6, M1, A5 and A14 and within 5 miles of Rugby train station. This conveniently situated, newly renovated conference venue has a range of spacious meeting rooms plus 20 beautiful, well equipped en suite bedrooms, an elegant restaurant and comfortable bar and lounge in which to unwind after a busy day.

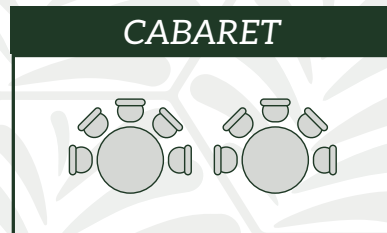
The Manor offers two attractive rooms in which to hold meetings. The Garden Room, which offers abundant natural daylight and elegant Edwardian features and The Old Library, a more formal room, ideal for boardroom style meetings. The separate Banqueting Suite building offers two very large meeting rooms and a spacious private bar. The whole building can be hired on a private use basis for conferences up to 200 delegates and is ideal for exhibitions, large conferences, gala dinners, product launches, award ceremonies and team building activities.

Meetings at Catthorpe Manor Estate benefit from the following:

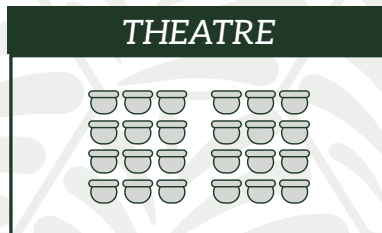
- Ground floor location
- Wheelchair access
- Natural daylight (some with black-out facility)
- Your choice of lay-out
- Pens & paper
- Comfortable chairs
- Iced water
- Data projector* and screen
- Flipchart
- Whiteboard
- Flatscreen TV with data-port
- Complimentary WiFi access
- Free, plentiful on-site car parking
- Excellent home-cooked food
- Comfortable lounge area in which to take a break
- Photocopying, fax, scanning and printing services (charges apply)

*Use of the data projector is included in day delegate rates and 24 hour delegate rates. Where meeting room hire only is required, a charge of £25 applies.

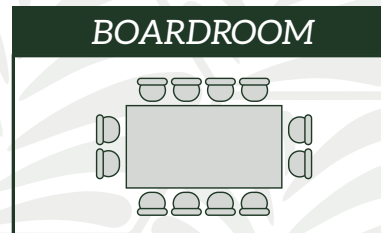
Room Layouts & Capacities



CABARET



THEATRE



BOARDROOM

The Garden Room	30
The Old Library	18
The Old Hall	60
Swedish Hall	120
The Banqueting Suite	180

The Garden Room	70
The Old Library	30
The Old Hall	150
Swedish Hall	250
The Banqueting Suite	250

The Garden Room	26
The Old Library	14
The Old Hall	40
Swedish Hall	50
The Banqueting Suite	N/A

Room Hire Rates

The Garden Room	£230 Plus VAT
The Old Library	£180 Plus VAT
The Old Hall	£250 Plus VAT
Swedish Hall	£250 Plus VAT
The Banqueting Suite	£350 Plus VAT

(N.B. These are included in the above DDR and 24-Hour DR rates).

Day Delegate Rate From £33pp plus VAT. Min. 8 delegates	24-Hour Delegate Rate From £130pp plus VAT. Min. 8 delegates
Available, Monday to Friday from 8.00am - 6.00pm. For weekend rates please contact the conferences team on 01788 860599	Available Monday to Friday. For weekend rates please contact the conferences team on 01788 860599
<p>Inclusive of the following:</p> <ul style="list-style-type: none"> - Hire of meeting room, set to client's specification - Flipchart, white-board & pens - Use of data projector & screen - Use of flat-screen television, with built in data port - Bottomless tea and coffee refills - Cookies served with mid-morning and mid-afternoon coffee - Hot or cold 2-course buffet lunch with fruit juice, tea & coffee - Complimentary bowl of seasonal fruit, in the meeting room - Complimentary WiFi access - Pens & paper - Use of podium, if required, in larger conference rooms - Iced water and cordials 	<p>Inclusive of the following:</p> <ul style="list-style-type: none"> - En suite accommodation on a single occupancy basis - Full English and Continental breakfast - 2-course evening dinner - Hire of meeting room, set to client's specification - Flipchart, white-board & pens - Use of data projector & screen - Use of flat-screen television, with built in data port - Bottomless tea and coffee refills - Cookies served with mid-morning and mid-afternoon coffee - 2-course lunch with fruit juice, tea & coffee - Free parking - Complimentary WiFi access - Pens & paper - Use of podium, if required, in larger conference rooms - Iced water and cordials

For more information or to request a visit, please contact us on 01788 860599 or enquiries@catthorpe Manor.co.uk

Food & Beverages

Catthorpe Manor Estate's Head Chef and his team pride themselves on offering excellent food, freshly prepared using seasonal ingredients and estate grown produce wherever possible. A wide range of hot and cold menu options and beverage choices are available, from a quick working lunch to à la carte dining in The Linden Tree Restaurant.

Team Building Activities

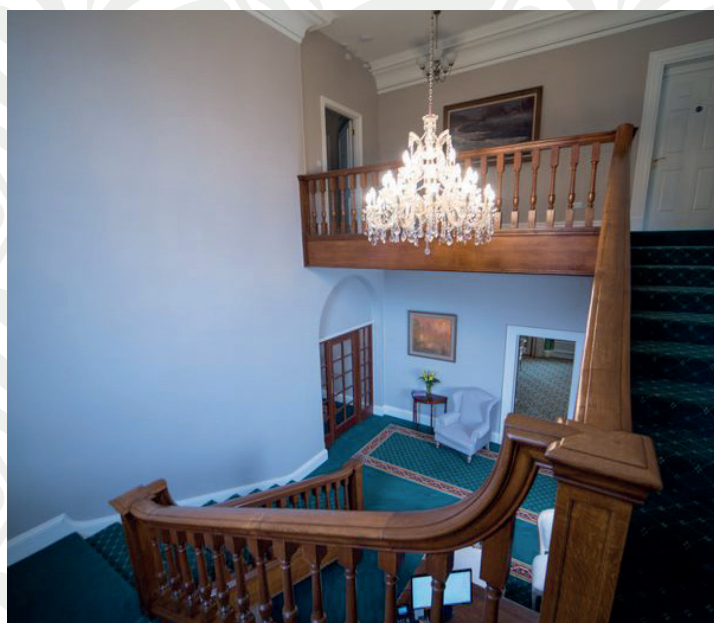
With 26 acres of grounds, a large field and woodland, plus large meeting rooms sufficiently spacious to accommodate indoor activities, Catthorpe Manor Estate is the ideal location for holding a wide range of team building events, from blindfold driving or segway riding to archery or the more cerebral team work challenges. Working with Off Limits Corporate Events, Catthorpe Manor Estate are delighted to put together action packed proposals, guaranteed to give clients a memorable and valuable team experience.



Accommodation

Catthorpe Manor Estate has a choice of 20 beautiful bedrooms and each one offers a combination of comfort, elegance and convenience.

The bedrooms are graded Bronze to Platinum but, whichever you choose, all are equipped with quality mattresses, en suite shower rooms, with several also offering a bath, luxurious hand-carved French inspired wood furniture, 32" LCD TV with multi-channel Freeview, towels, robes, complimentary tea and coffee making facilities, toiletries and mineral water. For current room rates and availability please visit www.catthorpemanor.co.uk or call reception on 01788 860599.

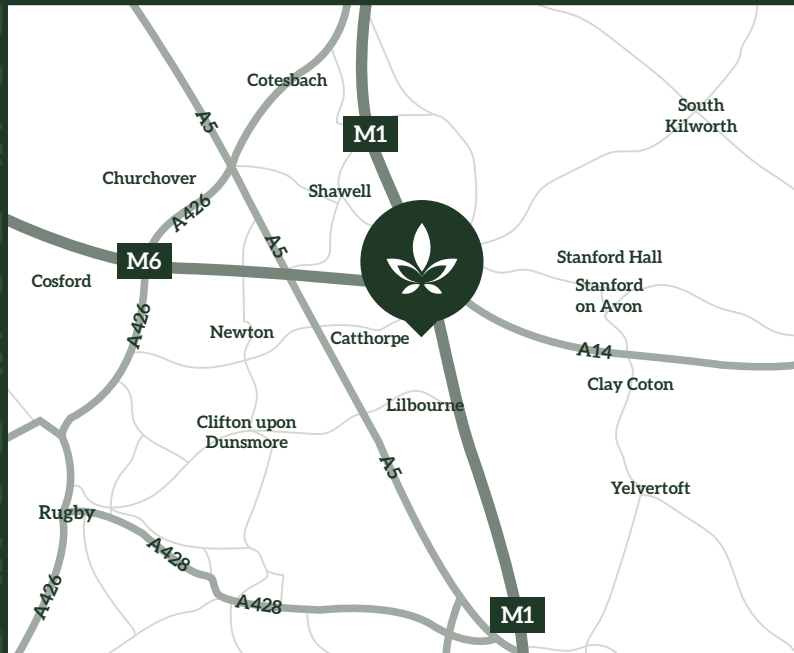


On 16th March 2016, Catthorpe Manor Estate served the right wine, in the right room, at the right time, without notice.



CATTHORPE MANOR ESTATE

COUNTRY HOUSE HOTEL & RESTAURANT



'Caththorpe Manor belongs to The Latvian Welfare Trust (registered charity 1124661) and is run by its subsidiary company LWT Trading UK Ltd. Company No. 8798565'

W: caththorpemanor.co.uk E: enquiries@caththorpemanor.co.uk T: 01788 860599
Caththorpe Manor, Lilbourne Lane, Catthorpe, Nr. Lutterworth, Leics, LE17 6DF