



d&m catalogue





TABLE OF CONTENTS

d&m about us	4
d&m team	7
d&m values facts figures	8
d&m designers	10
d&m in-shop	12
d&m labels	14
d&m depot	16
fine ceramics	18
basic	60
presents	68
garden corner	74
karoo	82
wood	84
glass	90
wicker	100
accessories	112
rubber	126
larger	130
d&m table	138



D&M

d&m about us

EN DECORATIVE DESIGN THAT CONTINUES TO FASCINATE

In 1992, their company still operated from an old garage and toured through Europe in a van testing ideas and proposing creations. Today, it is a world-renowned company that works with all types of florists, leading decor and interior design specialists and famous retail stores. Suzie Verbinnen is the creative mind behind D&M, Steve Vercammen is general director and responsible for sales activities. Their philosophy: to excel in everything they offer and do, up to and including service.

They have managed that very nicely, partly thanks to the dedication and passion of their creative and sales teams, both at home and abroad. The van has become a large warehouse with a permanent stock that guarantees fast deliveries anywhere in the world. New collections are launched twice a year in addition of course to the tailor-made products requested by individual customers. D&M creates collections for florists, but the company also realizes decorative designs that are aimed at a wider market such as coffee and dinner sets and products made with natural fabrics. The company comprises D&M depot, D&M table and D&M fabrics, so that it is able to offer a comprehensive range of interior design accessories. Minimalist and timeless in design and which is characterised by an original and unique palette of colours. D&M today is increasingly geared towards the global market of hand-crafted decorative products. From its headquarters in Aartselaar and its offices in China new, high-quality and high-profile collections are commissioned each season by florists, decoration shops and retail stores across the entire world. This is the result of a single-minded mission, a creative vision and an enduring passion.

NL DECORATIEF DESIGN DAT BLIJFT BOEIEN

In 1992 waren ze nog gevestigd in een oude garage en toerden ze met een bestelwagen door Europa om hun ideeën te toetsen en hun creaties aan te bieden. Vandaag de dag is het een bedrijf met wereldfaam, vriend-aan-huis bij alle floristen, toonaangevende decoratie- en interieurspecialisten alsook bekende retailstores. Suzie Verbinnen is de creatieve motor van D&M, Steve Vercammen is algemeen directeur en verantwoordelijk voor de commerciële activiteiten.

Hun filosofie: onderscheidend zijn in alles wat je brengt en wat je doet, tot en met je service. Dat is hen aardig gelukt, mede dank zij de toewijding en de gedrevenheid van hun artistieke en commerciële medewerkers in binnen- en buitenland. De bestelwagen is inmiddels een groot magazijn geworden met een permanente voorraad die snelle leveringen waarborgt overal ter wereld. Tweemaal per jaar worden er nieuwe collecties gelanceerd, bovendien kunnen specifieke maat-producten op vraag van de klant gemaakt worden. D&M ontwerpt collecties voor de florist maar realiseert ook decoratiedesign dat zich richt tot een ruimere markt, zoals koffie- en eetserviezen en producten op basis van natuurlijke stoffen. Met D&M depot, D&M table en D&M fabrics biedt de onderneming een volwaardig assortiment interieuraccessoires aan dat opvalt door zijn sober, tijdloos design en zijn specifiek kleurenpalet. D&M anno nu is een onderneming die zich steeds sterker profileert op de wereldmarkt van de artisanale decoratie. Vanuit de hoofdzetel in Aartselaar en het kantoor in China vinden elk seizoen weer nieuwe, kwaliteitsvolle, spraakmakende collecties hun weg naar floristen, decoratiewinkels en retail stores in de hele wereld. Het resultaat van een rechtlijnige missie, een creatieve visie en een blijvende passie.

—
Heute ist D&M ein Unternehmen mit Welttruf.

—
Oggi D&M depot è nota in tutto il mondo.

—
Vandaag de dag is D&M een bedrijf met wereldfaam.

—
Today D&M is a world-renowned company.

—
Aujourd'hui D&M est devenu une entreprise de renommée mondiale.

FR LE DESIGN DECORATIF QUI NE LASSE JAMAIS

En 1992, ils étaient encore établis dans un vieux garage et voyageaient à travers l'Europe en camionnette pour mettre leurs idées à l'épreuve et proposer leurs créations. Aujourd'hui, les voilà devenus une entreprise de renommée mondiale, qui a pignon sur rue auprès de tous les fleuristes et des plus éminents spécialistes en décoration et en intérieur. Suzie Verbinnen est la force créatrice qui se cache derrière D&M. Steve Vercammen, pour sa part, est directeur général et responsable des activités commerciales. Leur philosophie: se démarquer dans tout ce qu'ils apportent et dans tout ce qu'ils font, service inclus.

Cette philosophie leur a bien réussi, de même que le dévouement et l'enthousiasme de leurs collaborateurs artistiques et commerciaux, en Belgique comme à l'étranger. Depuis, un grand entrepôt au stock permanent a remplacé la camionnette et garantit des livraisons rapides, partout dans le monde. De nouvelles collections sortent deux fois par an, et des produits sur mesure spécifiques peuvent en outre être créés sur demande du client. Les créations de D&M sont conçues pour s'adresser en outre aux fleuristes, mais D&M développe également des designs de décoration destinés à un marché plus large, comme les services à café et de table, ainsi que des produits à base d'ingrédients naturels. Avec D&M depot, D&M table et D&M fabrics, l'entreprise propose une gamme complète d'accessoires d'intérieur caractérisés par leur design épuré intemporel et leur palette de couleurs spécifique. Aujourd'hui, D&M est désormais une entreprise qui se profile de plus en plus sur le marché mondial de la décoration artisanale. La maison mère, située à Aartselaar, et la filiale chinoise créent chaque saison de nouvelles collections de haute qualité qui font sensation auprès des fleuristes, des magasins de décoration et des grandes chaînes de magasins du monde entier, fruit d'une mission linéaire, d'une vision créative et d'une passion constante.



d&m about us

DE DEKORATIVES DESIGN, DAUERHAFT FESSELND

Im Jahr 1992 saßen sie noch in einer alten Garage und tourten mit einem Lieferwagen durch Europa, um ihre Ideen an der Wirklichkeit zu prüfen und ihre Kreationen anzubieten. Heute haben sie ein Unternehmen mit Weltruf, werden sie von Floristen mit offenen Armen begrüßt und sind sie angesehene Spezialisten für Dekoration und Raumausstattung. Suzie Verbinnen ist der kreative Motor von D&M depot, Steve Vercammen ist als Geschäftsführer für die kaufmännischen Aufgaben verantwortlich. Ihre Philosophie: unverwechselbar sein in allem, was sie hervorbringen und was sie tun, bis hin zum Service.

Das ist ihnen meisterhaft gelungen, auch dank des Engagements und der Leidenschaft ihrer künstlerischen und kaufmännischen Mitarbeiter im In- und Ausland. Der Lieferwagen hat sich mittlerweile zu einem großen Lager mit einem breiten Warenbestand gemauert, der rasche Lieferungen in jeden Winkel der Welt gewährleistet. Zwei Mal im Jahr werden neue Kollektionen vorgestellt, zudem können Produkte nach Maß auf Kundenwunsch gefertigt werden. Die Kreationen von D&M sind zwar noch immer mit Blick auf Floristen entworfen, aber D&M depot entwickelt auch dekoratives Design, das sich an einen größeren Markt richtet, wie Kaffee- und Tafelgeschirr sowie Produkte auf der Basis natürlicher Stoffe. Mit D&M depot, D&M table und D&M fabrics bietet das Unternehmen ein vollwertiges Sortiment an Zubehör für die Raumausstattung, das sich durch sein schlichtes, zeitloses Design und seine spezielle Farbpalette auszeichnet. D&M ist heute ein Unternehmen, das sich auf dem Weltmarkt für handwerklich hergestellte Dekorationsartikel immer stärker profiliert. Von der Zentrale im belgischen Aartselaar und einer Geschäftsstelle in China aus finden in jeder Saison neue, hochwertige, aufsehenerregende Kollektionen ihren Weg zu Floristen, Dekorationsgeschäften und Privatkunden in aller Welt. Das Ergebnis einer geradlinigen Mission, einer kreativen Vision und einer nicht nachlassenden Leidenschaft.

IT UN DESIGN DECORATIVO CHE CONTINUA AD AFFASCINARE

Nel 1992 avevano ancora sede in un vecchio garage e giravano l'Europa con un furgone, per mettere alla prova le proprie idee e presentare le proprie creazioni. Oggi l'azienda è nota in tutto il mondo, collaborando con i principali fioristi ed importanti esperti di decorazione di interni. Suzie Verbinnen è la mente creativa di D&M depot, Steve Vercammen è il direttore generale e responsabile delle attività commerciali. La loro filosofia: contraddistinguersi per ciò che apportano e ciò che realizzano, compresa l'assistenza.

Sono riusciti nel loro intento grazie anche alla dedizione e alla passione dei loro collaboratori artistici e commerciali in Belgio e all'estero. Il furgone è nel frattempo divenuto un grande magazzino con una scorta permanente che assicura consegne rapide in tutto il mondo. Il lancio delle nuove collezioni ha luogo due volte l'anno, ma possono essere realizzati anche prodotti personalizzati su misura per le esigenze del singolo cliente. Le creazioni D&M sono ancora sviluppate adottando il fiorista come punto di partenza. D&M depot sviluppa anche un design decorativo per un mercato più ampio, quale quello dei servizi da caffè e da tavola, e prodotti a base di materiali naturali. Con D&M depot, D&M table e D&M fabrics l'azienda offre un pregiato assortimento di accessori da interni che si distingue per la sobrietà, il design senza tempo e la specifica gamma di colori. D&M è oggi un'azienda che assume una posizione sempre di maggior spicco sul mercato mondiale della decorazione artigianale. Dalla sede principale di Aartselaar e dalla filiale in Cina, ad ogni stagione vengono offerte a fioristi, negozi di articoli per decorazioni e privati in tutto il mondo collezioni nuove, spettacolari e di qualità. Il risultato di una missione coerente, una visione creativa e una passione costante.

d&mteam

1 JEROEN METTEPENNINGEN
Sales Director
jeroen@dmdepot.be

2 WIM VAN BULCK
Warehouse Manager

3 GERRIT VERHOEVEN
Warehouse Employee

4 ALEX PATTYN
Logistics
alex@dmdepot.be

5 MIREILLE MOSTINCX
Marketing and Communications
mireille@dmdepot.be

6 MICHELLE BEKX
Purchase & Styling
michelle@dmdepot.be

7 DAVID WILLEMS
Warehouse Employee

8 STEFAN HEULOT
Brand Advisor
stefan@dmdepot.be

9 LINDA DE WOLF
Brand Advisor
linda@dmdepot.be

10 STEVE VERCAMMEN & SUZIE VERBINNEN
Managing Director & Creative Director
steve@dmdepot.be | suzie@dmdepot.be

11 SIRRI BOSMANS
Styling

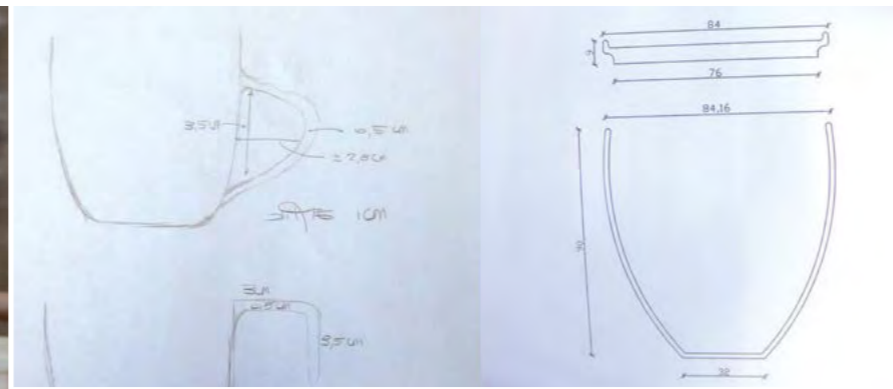
12 YVES PIRON
Warehouse Employee

13 GERT VANDENBERGHE
Logistics
gert@dmdepot.be

14 KARIN VAN DEN BROECK
Accounting
karin@dmdepot.be

15 MICHAEL WITHAEGELS
Sales België
michael@dmdepot.be

16 HELEEN PIRON
Styling
heleen@dmdepot.be



D&M

d&mvalues facts figures

ORIGINAL DESIGN

Put in the hands of a team of highly talented designers to guarantee they are totally unique.

TECHNICAL RESEARCH

New revolutionary materials are created in the D&M R&D department.

QUALITY CONTROL

Consistently-controlled manufacturing process to guarantee quality at all times.

LOGISTIC SERVICES

Fast guaranteed deliveries and logistics services.

AFTER-SALES SERVICE

Thanks to the meticulous after-sales service, D&M is with you at all times.

CUSTOMER FEEDBACK

Your experience and opinion are essential as they enable us to grow and improve.

LABELS	3
AGENTS	30
CONTAINERS A YEAR	240 TEU
D&M IN SHOP WORLDWIDE	150
ACTIVE PRODUCTS	3000
SQ.M WAREHOUSE BELGIUM	6500
SQ.M WAREHOUSE CHINA	2000
PALLETS A YEAR	500 000
PRODUCTS SOLD A YEAR	1 700 000
KILOS OF CLAY	1 400 000



D&M

d&m designers

EN

A FEW DESIGNERS

I LIEVE BERGMANS worked for a time as an assistant and partner of an artist specializing in government projects. As a solo artist too, she thinks a lot about art in public buildings. Urban Farm came about when she moved to the city from the countryside, and she could not resist doing some gardening.

I JENS MILONTON is mainly inspired by nature. He also tries to live up to his social and moral obligations by seeking fundamental sustainability. BRIQ is a first step in the right direction for this young product developer.

I * HIVE is an innovative company of six engineering students from Karel de Grote-Hogeschool. The team consists of **Yannis De Cleene**: Administrative Manager, **Yannick Ba**: General Manager, **Sanel Pepeljak**: Technical Manager, **Bart De Kleijn**: Graphic Design Manager, **Stefan Ceulemans**: Financial Manager, **David Lehembre**: Sales Manager

I PAULA WEISE is a young and talented German designer of the highest level. Since 2011, she has been part of the ADREAM Project Management team (Architectural & Design competition in renewable and eco materials). She also works as an Artistic Assistant at the Weimar Bauhaus Universität, from which she graduated in 2011. Her extremely cleverly thought-out designs exude an air of pure simplicity and striking beauty.

I JIRI VERMEULEN obtained a Master in Product Development. He has a strong interest in how trends in society can be translated into product innovation. The time he spent in Istanbul contributed to this fascination.

I ANJA MEEUSEN, TINNE DEBRUIJNE, JUDITH BLOEDJES, NOELLE OBUSSIER, DOMINIQUE MOSSERAY, CORALY SEPULCHRE

NL

EEN HANDVOL ONTWERPERS

I LIEVE BERGMANS werkte een tijdlang als assistente en partner van een kunstenaar gespecialiseerd in overheidsprojecten. Ook als solo-artieste denkt ze veel na over kunst in openbare gebouwen. Urban Farm kwam tot stand toen ze van het platteland naar de stad verhuisde en ze het tuinieren niet kon laten.

I JENS MILONTON laat zich vooral inspireren door de natuur. Daarnaast probeert hij zijn sociale en morele verplichtingen na te komen door te streven naar fundamentele duurzaamheid. Met Briq zet deze jonge productontwikkelaar alvast een eerste stap in de goede richting.

I *HIVE is een innoverende onderneming van 6 ingenieursstudenten van de Karel de Grote-Hogeschool. Het team bestaat uit **Yannis De Cleene**: Administratief verantwoordelijke, **Yannick Ba**: algemeen verantwoordelijke, **Sanel Pepeljak**: Technisch verantwoordelijke, **Bart De Kleijn**: grafisch verantwoordelijke, **Stefan Ceulemans**: Financieel verantwoordelijke, **David Lehembre** commercieel verantwoordelijke

I PAULA WEISE, het jonge Duitse talent, is designer van het hoogste niveau. Sinds 2011 maakt ze deel uit van het Project Management ADREAM (Architecturaal & Design wedstrijd in hernieuwbare en ecologische materialen). Ze werkt ook als Artistiek Assistentie aan de Bauhaus Universität te Weimar, waar ze in 2011 afstudeerde. Haar doordachte ontwerpen verschuilen zich achter een eenvoudige mooie uitstraling.

I JIRI VERMEULEN heeft een Master in Product Development. Hij is zeer sterk geïnteresseerd in hoe maatschappelijke trends kunnen leiden tot product innovaties. De tijd die hij doorbracht in Istanboel, droeg bij tot deze fascinatie.

I ANJA MEEUSEN, TINNE DEBRUIJNE, JUDITH BLOEDJES, NOELLE OBUSSIER, DOMINIQUE MOSSERAY, CORALY SEPULCHRE

FR

UN BOUQUET DE CREATEURS

I LIEVE BERGMANS a travaillé pendant un temps comme assistante et partenaire d'un artiste spécialisé dans les projets publics. Elle réfléchit aussi beaucoup en tant qu'artiste solo à l'art dans les bâtiments publics. Urban Farm est né quand elle a déménagé de la campagne à la ville sans pouvoir se résoudre à abandonner le jardinage.

I JENS MILONTON se laisse surtout inspirer par la nature. Il s'efforce par ailleurs de respecter ses obligations sociales et morales en tendant vers la durabilité fondamentale. Avec Briq, ce jeune concepteur fait déjà un premier pas dans la bonne direction.

I *HIVE est une entreprise innovante de 6 étudiants ingénieurs de la Haute École Karel de Grote. L'équipe se compose de : **Yannis**

De Cleene : Responsable administratif, **Yannick Ba** : Responsable général, **Sanel Pepeljak** : Responsable technique, **Bart De Kleijn** : Responsable graphique, **Stefan Ceulemans** : Responsable financier, **David Lehembre** : Responsable commercial

I PAULA WEISE La jeune et talentueuse Paula Weise est une designer allemande du plus haut niveau. Depuis 2011, elle fait partie du Project Management ADREAM (Concours d'architecture et de design en matériaux recyclables et écologiques). Elle travaille par ailleurs comme Assistante Artistique à la Bauhaus Universität de Weimar, dont elle a elle-même été diplômée en 2011. Derrière un rayonnement simple et magnifique se cachent des créations réfléchies.

I JIRI VERMEULEN a obtenu un Master en Développement de produit. Il s'intéresse beaucoup à comment les tendances sociales mènent aux innovations de produits. Le temps qu'il a passé à Istanbul, a contribué à cette fascination.

I ANJA MEEUSEN, TINNE DEBRUIJNE, JUDITH BLOEDJES, NOELLE OBUSSIER, DOMINIQUE MOSSERAY, CORALY SEPULCHRE

IT

ALCUNI DESIGNERS

I LIEVE BERGMANS ha lavorato per qualche tempo come assistente e partner di un artista specializzato in progetti di opere pubbliche. Anche come artista solista si concentra molto sull'arte negli edifici pubblici. Urban Farm è venuta alla luce quando ha abbandonato la campagna per la città, immergendosi nel giardinaggio.

I JENS MILONTON si fa ispirare soprattutto dalla natura. Cerca inoltre di adempiere ai propri doveri sociali e morali puntando all'essenziale sostenibilità. Con Briq il giovane product developer fa un primo passo nella giusta direzione.

I * HIVE è un'azienda innovativa di 6 geniali studenti della Karel de Grote-Hogeschool. Il team è composto da: **Yannis De Cleene**: responsabile amministrativo, **Yannick Ba**: responsabile generale, **Sanel Pepeljak**: responsabile tecnico, **Bart De Kleijn**: responsabile grafico, **Stefan Ceulemans**: responsabile finanziario, **David Lehembre**: responsabile commerciale

I PAULA WEISE La giovane tedesca Paula Weise, con il suo spiccato talento, è una designer di elevatissimo livello. Dal 2011 fa parte del Project Management ADREAM (concorso di architettura e design in materiali rinnovabili ed ecologici). Lavora anche come Assistente Artistico alla Bauhaus Universität di Weimar, dove ha concluso gli studi nel 2011. La ricercatezza dei suoi progetti si cela dietro un'apparente ed elegante semplicità.

I JIRI VERMEULEN ha conseguito un Master in Product Development. Ha grande interesse sul modo in cui le tendenze della società influiscono sull'innovazione dei prodotti, il periodo trascorso ad Istanbul

I ANJA MEEUSEN, TINNE DEBRUIJNE, JUDITH BLOEDJES, NOELLE OBUSSIER, DOMINIQUE MOSSERAY, CORALY SEPULCHRE

DE

VERSCHIEDENE DESIGNERS

I LIEVE BERGMANS arbeitete eine Zeit lang als Assistentin und Partnerin eines auf öffentliche Projekte spezialisierten Künstlers. Auch als Solokünstlerin denkt sie viel über Kunst in öffentlichen Gebäuden nach. Urban Farm kam zustande, als sie vom Land in die Stadt zog und trotzdem weiter gärtnern wollte.

I JENS MILONTON lässt sich vor allem von der Natur inspirieren. Daneben versucht er, seine sozialen und moralischen Verpflichtungen zu erfüllen, indem er sich um grundlegende Haltbarkeit bemüht. Mit Briq tut dieser junge Produktentwerfer auf jeden Fall einen ersten Schritt in diese Richtung.

I * HIVE ist ein innovierendes Projekt von 6 Ingenieursstudenten der Karel de Grote-Hochschule. Das Team besteht aus: **Yannis De Cleene**: Leiter der Verwaltung, **Yannick Ba**: Allgemeiner Leiter, **Sanel Pepeljak**: Technischer Leiter, **Bart De Kleijn**: Grafischer Leiter, **Stefan Ceulemans**: Finanzieller Leiter, **David Lehembre**: Kommerzieller Leiter

I PAULA WEISE Das junge deutsche Talent Paula Weise ist Designerin von höchstem Niveau. Seit 2011 gehört sie dem Projektmanagement von ADREAM an (Architektur- und Designwettbewerb mit nachwachsenden und ökologischen Materialien). Sie ist auch als Künstlerische Mitarbeiterin an der Bauhaus-Universität in Weimar tätig, wo sie 2011 ihr Studium abgeschlossen hat. Ihre gut durchdachten Entwürfe verbergen sich hinter einer einfachen, schönen Ausstrahlung.

I JIRI VERMEULEN hat ein Master Diplom in Produktentwicklung bekommen. Er ist intensiv interessiert in die Art und Weise wie die gesellschaftliche Trends bis zum Produkt Innovationen leiten können. Seiner Aufenthalt in Istanboel, war förderlich zu diese Faszination.

I ANJA MEEUSEN, TINNE DEBRUIJNE, JUDITH BLOEDJES, NOELLE OBUSSIER, DOMINIQUE MOSSERAY, CORALY SEPULCHRE



D&M

d&m in shop

EN DECORATIVE DESIGN IN A PERSONAL SETTING: D&M-IN-SHOP

The D&M-in-shop concept was conceived and developed to present D&M products in an inspiring way in a shop or showroom environment, in line with the overall look and spatial constraints of the shop, the customer's wishes or options.

Within this concept, the customer has a choice of three setups: D&M Spirit, a compact, stylish showroom area where you can display and present the D&M assortment, D&M Ambiance, a special D&M corner, with matching furniture, and D&M World, a D&M-in-shop where the D&M presentation is systematically integrated in the shop or showroom.

The D&M-in-shop concept is on display in the D&M showroom in Aartselaar. Store managers who are interested can discover the different possibilities by appointment.

NL DECORATIEDESIGN IN EEN EIGEN KADER: D&M-IN-SHOP

Het D&M-in-shop concept is bedacht en ontwikkeld om de D&M producten op een inspirerende manier in een winkel- of toonzaalomgeving aan te bieden, in lijn én op maat van de winkelrichting, de wensen of de mogelijkheden.

De klant heeft daarbij de keuze uit drie opstellingen: D&M Spirit, een kleine, strakke showroom waar u het D&M assortiment kunt uitstallen en presenteren, D&M Ambiance, een speciale D&M corner, met aangepaste meubeltjes en D&M world, een eigen D&M-in-shop waarbij de D&M presentatie planmatig in de winkel of de toonzaal wordt geïntegreerd.

Het D&M-in-shop concept staat te kijk in de toonzaal van D&M in Aartselaar. Geïntereeerde winkeliers en verdelers kunnen er tijdens de kantooruren of op afspraak terecht om de mogelijkheden zelf te komen ontdekken.

FR UN DESIGN DECORATIF DANS UN CADRE PERSONNEL: D&M-IN-SHOP

Conçu pour présenter les produits D&M de manière inspirante dans les magasins et les salles d'exposition, le concept D&M-in-shop respecte également l'harmonie et l'aménagement du magasin ainsi que les souhaits et les possibilités du client.

Celui-ci se voit proposer trois possibilités: D&M Spirit, un petit coin d'exposition où peut être exposée et présentée la gamme de produits D&M, D&M Ambiance, un espace dédié aux produits D&M, accueillant un mobilier adapté, D&M World, un D&M-in-shop à soi où la présentation des produits D&M est systématiquement intégrée dans le magasin ou la salle d'exposition.

Le concept D&M-in-shop est visible au showroom D&M à Aartselaar. Les store managers intéressés peuvent découvrir les différentes possibilités pendant les heures de bureau ou sur rendez-vous.

IT DESIGN ORNAMENTALE IN ALLESTIMENTO PERSONALE: D&M-IN-SHOP

Il concetto D&M-in-shop è stato studiato e sviluppato per presentare i prodotti D&M in maniera attraente nei negozi e negli showroom, in linea con l'arredamento dei locali e in modo da rispondere alle esigenze e alle possibilità del cliente, che può scegliere fra tre diverse soluzioni: D&M Spirit, un piccolo showroom dallo stile sobrio in cui è possibile esporre e presentare l'assortimento di prodotti D&M, D&M Ambiance, uno speciale spazio D&M arredato con appositi mobiletti, e D&M World, un vero e proprio D&M-in-shop che consente di integrare in modo ottimale la presentazione di prodotti D&M nel negozio o nello showroom.

Il concetto di D&M-in-shop è visibile nello showroom D&M di Aartselaar. Gli store manager interessati potranno scoprire le diverse possibilità negli orari d'ufficio o su appuntamento.

DE DEKORATIVES DESIGN IN EINEM PERSÖNLICHEN UMFELD: D&M-IN-SHOP

Das Konzept D&M-in-shop wurde dazu entwickelt, Produkte von D&M auf inspirierende Weise in einer Geschäfts- oder Showroom-Umgebung zu präsentieren, im Einklang mit der Geschäftseinrichtung sowie den Wünschen oder Möglichkeiten des Kunden. Dabei hat der Kunde die Wahl zwischen drei Konfigurationen:

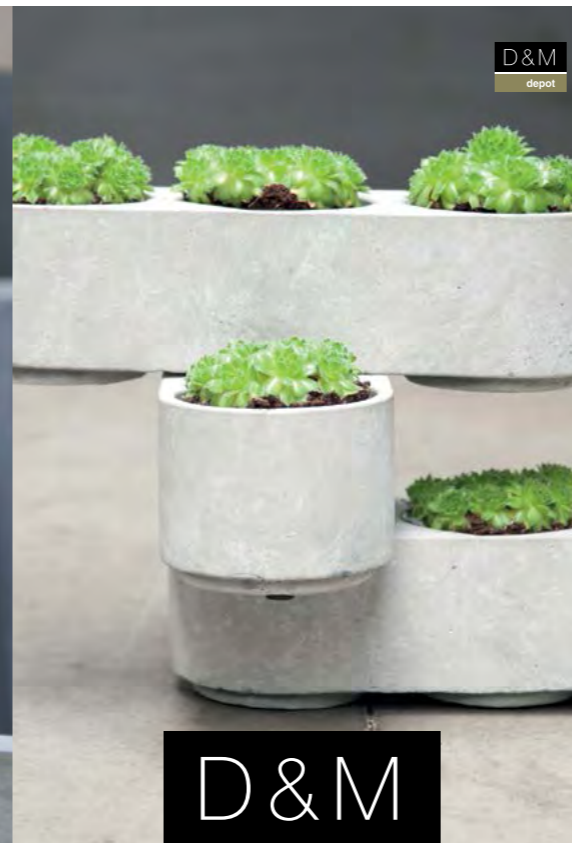
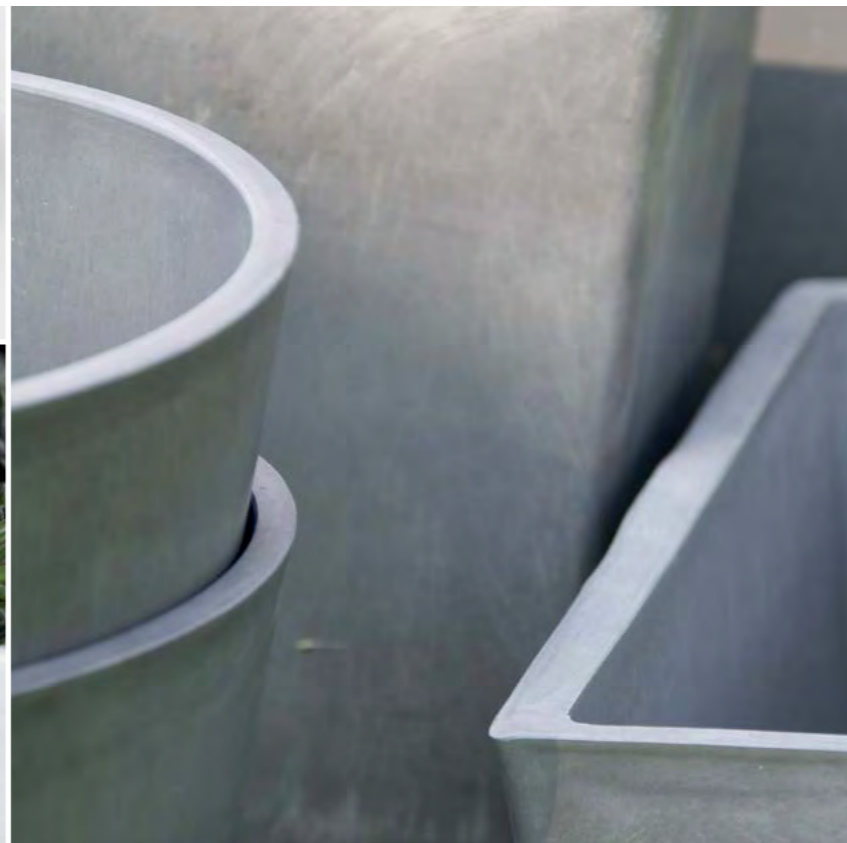
D&M Spirit, ein kleiner, schlichter Showroom, in dem Sie das D&M-Sortiment ausstellen und präsentieren können, D&M Ambiance, ein besonderer D&M-Corner mit passenden Möbeln, D&M World, ein eigener D&M-in-shop, der die D&M-Präsentation planmäßig in das Geschäft oder den Ausstellungsraum integriert.

Das D&M-in-shop Konzept ist im D&M Showroom in Aartselaar zu sehen. Interessierte Geschäftsleiter können die diversen Möglichkeiten in den Geschäftszeiten oder nach Terminvereinbarung entdecken.



D&M

d&meco



D&M

d&mlabels



D&M fabrics



D&M table



EN

"Eco by D&M" is the living proof that D&M has no intention of restricting itself solely to interior decor. Suzie Verbinnen and Steve Vercammen's goal with this project is to adopt a consciously 'greener' way of doing business

NL

"Eco by D&M" is het levende bewijs dat D&M zich niet wil beperken tot interieurdecoratie. Met dit project kiezen Suzie Verbinnen en Steve Vercammen bewust voor 'groener' ondernemen.

FR

"Eco by D&M" est la preuve vivante que D&M est bien décidée à ne pas se cantonner dans la décoration intérieure. Avec ce projet, Suzie Verbinnen et Steve Vercammen cherchent à adopter une façon 'plus verte' de faire des affaires.

IT

"Eco by D&M" è la prova tangibile che D&M non ha alcuna intenzione di limitarsi al semplice décor d'interni. L'obiettivo cui Suzie Verbinnen e Steve Vercammen puntano con questo progetto è adottare una politica 'più verde' nella loro azienda.

DE

"Eco by D&M" ist der lebende Beweis dafür, dass D&M keinerlei Intentionen hat, sich ganz auf Innenausstattung zu beschränken. Suzie Verbinnen und Steve Vercammen verfolgen mit diesem Projekt das Ziel, die Geschäfte bewusst auf 'grünere' Art und Weise zu führen.

D&M

depot

EN

Everything you need to decorate in luxury and simplicity: ceramic, glass, pots, wicker baskets, tea lights, original accessories.

NL

Alles om in luxe en eenvoud te decoreren: keramiek, glaswerk, potten, rieten manden, t-lichtjes, originele accessoires.

FR

Décorez avec élégance et simplicité: céramique, verrerie, poterie, vannerie, photophores, accessoires originaux.

IT

Tutto l'occorrente per decorare nel segno del lusso e della semplicità: ceramica, vetro, vasi, cestini di vimini, candeline scaldavivande, accessori originali.

DE

Alles für die Dekoration in Luxus und Schlichtheit: keramik, Glaswerk, Töpfe, Körbe, T-Lichter, Originalzubehör.

D&M

fabrics

EN

Natural, carefully selected and manufactured fabrics: cushions, throws, felt items, table runners, placemats, ...

NL

Natuurlijke, zorgvuldig geselecteerde en bewerkte stoffen: kussens, plaid, viltten artikelen, tafellopers, placemats,...

FR

Etoffes naturelles et travaillées, sélectionnées avec soin: coussins, plaid, articles en feutrine, chemins de table, sets de table,...

IT

Materiali naturali, accuratamente selezionati e lavorati: cuscini, plaid, articoli in feltro, strisce da tavola, tovagliette, ...

DE

Natürliche, sorgfältig ausgewählte und bearbeitete Stoffe: kissen, Plaid, Filzartikel, Tischläufer, Platzdeckchen ...

D&M

table

EN

More than tasteful dinnerware for everyday use and festive occasions: plates, bowls, storage pots, coffee cups and mugs, ...

NL

Meer dan smaakvolle serviezen voor elke dagelijkse en feestelijke tafel: borden, kommen, voorraadpotten, koffie en mokkassen, ...

FR

Des services de distinction pour le quotidien et les tables de fête: assiettes, saladiers, pots à provisions, tasses à café et à expresso, ...

IT

Qualcosa di più di eleganti servizi per la tavola di tutti i giorni e le occasioni di festa: piatti, ciotole, barattoli, tazze da caffè e da moka, ...

DE

Mehr als geschmackvolles Geschirr für jeden täglichen und feierlichen Tisch: Teller, Schüsseln, Vorratstöpfe, Kaffee- und Mokkassen ...



D&M

depot

d&mdepot

EN

A COMPREHENSIVE LINE: D&M DEPOT

D&M recently finalised its three product lines: D&M fabrics, D&M table and the original D&M depot. The long-standing and therefore most important line is the biggest range of the three. This label includes indoor and outdoor pots, glasswork, wickerwork, tea lights and many decoration products that add a special touch to your interior.

NL

EEN UITGEBREID GAMMA: D&M DEPOT

Sinds kort brengt D&M drie productlijnen op de markt: D&M fabrics, D&M table en het oorspronkelijke D&M depot. De oudste en dus belangrijkste lijn biedt het grootste assortiment, bestaande uit potten voor zowel binnenshuis als buitenshuis, glaswerk, rieten manden, theelichtjes en vele andere producten die uw interieur de juiste uitstraling geven.

FR

UNE GAMME COMPLETE: D&M DEPOT

Depuis peu, il existe trois lignes de produits D&M: D&M fabrics, D&M table et la gamme originale D&M depot. La ligne la plus ancienne et donc la plus importante est la plus complète des trois. Ce label englobe un éventail complet de pots, d'articles de verrerie et de vannerie, de photophores ainsi que bien d'autres produits qui créent la touche que vous recherchez dans votre intérieur.

IT

UNA LINEA COMPLETA: D&M DEPOT

Di recente, sono diventate tre le linee di prodotti D&M: D&M fabrics, D&M table e l'originale D&M depot. La linea più antica e dunque più importante rappresenta la gamma più ricca delle tre. Il marchio comprende tutto ciò che è legato a vasi per interni ed esterni, articoli in vetro, articoli intrecciati, porta candeline e tanti altri prodotti che aggiungono il giusto tocco d'eleganza ai suoi interni.

DE

EINE UMFASSENDE PRODUKTLINIE: D&M DEPOT

Seit kurzem gibt es drei D&M Produktlinien: D&M Fabrics, D&M Table und das ursprüngliche D&M Depot. Die langjährige und daher wichtigste Produktlinie ist die umfangreichste der drei. Das Label umfasst alles, was mit Töpfen für drinnen und draußen, Glasgegenständen, Flechtwaren, Teelichten und vielen weiteren Produkten zu tun hat, die Ihren Innenräumen den letzten Schliff verleihen.



D&M

depot

d&mdepot

**FINE CERAMICS
FIJNE KERAMIEK
CERAMIQUE FINE
FEINKERAMIK
CERAMICA FINE**



CALIC

A range of tall, waterproof dishes and containers to display multiple orchids and flower arrangements, executed in cheese cloth, thinly glazed on the outside and with a dense glaze on the inside. The cheese cloth structure remains visible through the grey, creme or yellow tint of the glazed surface and transforms every item into a completely unique creation.



CR CREME FG YELLOW LGI GREY



AAR3965 CR | FG | LGI
Ø 29 x H 11



AAR3964 CR | FG | LGI
Ø 17 x H 14



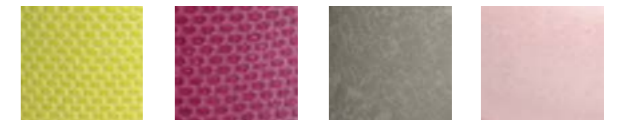
AAR3960 CR | FG | LGI
Ø 8.5 x H 7
AAR3961 CR | FG | LGI
Ø 14 x H 12.5
AAR3962 CR | FG | LGI
Ø 17 x H 15.5
AAR3963 CR | FG | LGI
Ø 25 x H 21.5



AAR3966 CR | FG | LGI
L 24 x H 7

MICMAC

One swallow does not make a summer, but MicMac already provides the necessary colour. These irresistible pots are made of Vietnamese red clay mixed with light grey, pink, raspberry and fluorescent yellow colours. The nice thing about MicMac is the elegant interplay of the two structures (plain and honeycomb). The pots are hand-made in a mould, which gives them a natural look. Because it is difficult to choose between the two structures, we have a nice mix of both in each package. And for orchid lovers the beautiful large bowl can take up to three of the divine flowers.



MIXED FINISHES FG YELLOW FR DARK RED LGI GREY RO PINK



AAR4180 FG | FR | LGI RO
Ø 14 x H 13
AAR4181 FG | FR | LGI RO
Ø 18 x H 16.5



AAR4182 FG | FR | LGI RO
SET OF 2
Ø 34 x H 13.5
Ø 23 x H 10



AAR4183 FG | FR | LGI
SET OF 3
Ø 31.5 x H 24.5
Ø 21.5 x H 17
Ø 15.5 x H 13



A slight unevenness makes all the difference between a collection like any other and a basic collection that offers that extra special touch. These concrete containers may look smooth, but they offer that something special. That something is created by a whitewash finish with a hardly visible fissure or a fine line. Available in the 8 colours.

CHAP



DGI DARK GREY DP DARK PURPLE FG YELLOW LGI LIGHT GREY NGI NEW GREY TP TAUPE MT METALLIC WH WHITE



AAR4242 FG | NGI | TP | WH
Ø 30 x H 14



AAR4237 FG | NGI | TP | WH
L 20 x W 8 x H 8
AAR4238 FG | NGI | TP | WH
L 24 x W 12 x H 8
AAR4239 NGI | TP | WH
L 40 x W 12 x H 8
AAR4240 NGI | TP | WH
L 50 x W 12 x H 8
AAR4241 NGI | TP | WH
L 60 x W 12 x H 8



AAR4236 FG | NGI | TP | WH
12 x H 8



AAR4145 DGI | DP | FG | LGI
MT | NGI | TP | WH
Ø 14 x H 12.5
AAR4146 DGI | DP | FG | LGI
MT | NGI | TP | WH
Ø 17.5 x H 16
AAR4230 FG | NGI | TP | WH
Ø 25 x H 23



AAR4231 FG | NGI | TP | WH
Ø 18 x H 4.5
AAR4232 FG | NGI | TP | WH
Ø 22 x H 5.5
AAR4233 FG | NGI | TP | WH
Ø 33 x H 8

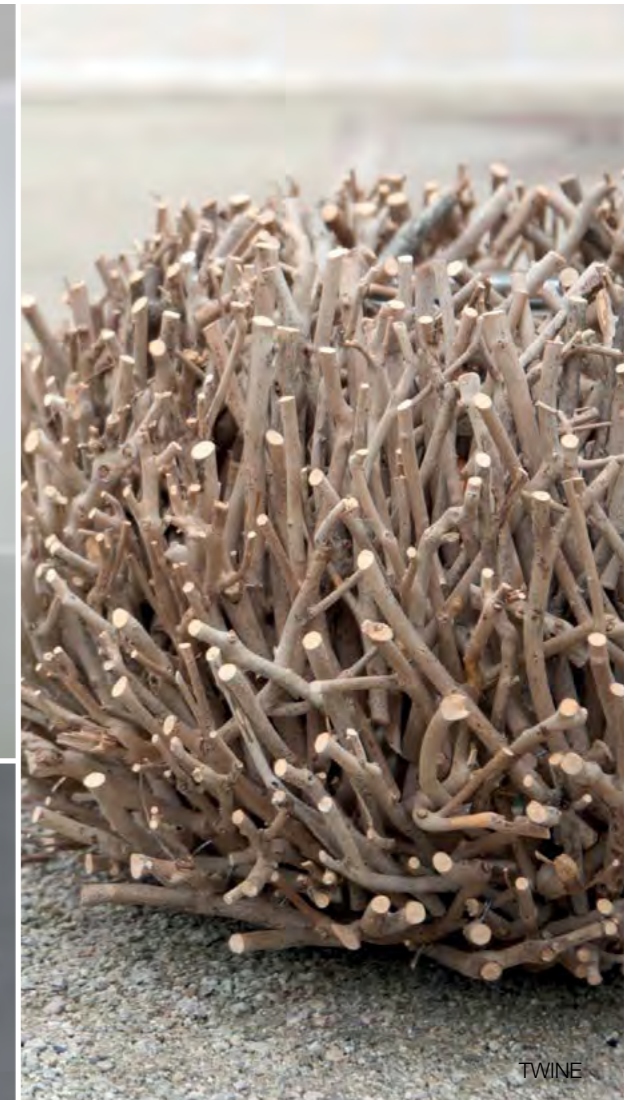


AAR4234 FG | NGI | TP | WH
23 x H 3.5
AAR4235 FG | NGI | TP | WH
36 x H 5

THINK YELLOW
BE HAPPY EN HAVE FUN



MOON



TWINE



CHAP



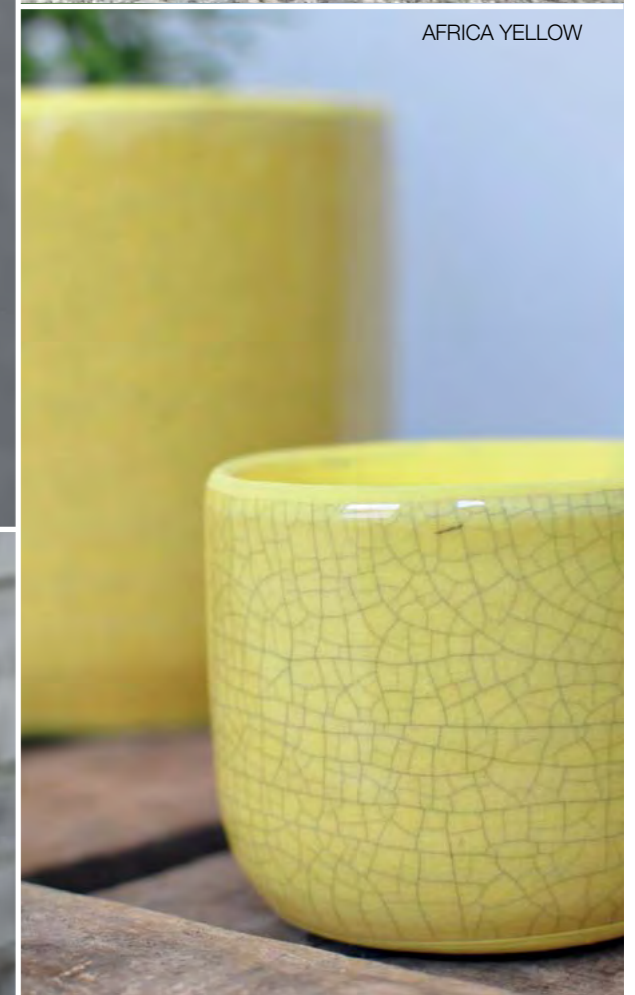
AFRICA WHITE



NEST



SIMPLICITY



AFRICA YELLOW



BASIC



KANGOOROO TRIPLE FEUILLE BÂTONS

Kangaroo distinguishes itself by its pure lines, worked into four different shapes. The pouch-shaped dish and vase are real eye-catching items in this artistic collection. Three ceramic layers twist themselves around each other to create a gorgeous ensemble which alternately evokes associations with organic shapes in nature and timeless fashion elements. A daring collection of pots, dishes and small vases which is particularly appealing because of the obviousness with which everything falls into place. The delicate shapes work best with a light, dainty decoration. The delicate interplay of ceramic sticks and vases. In the Bâtons collection, they literally balance each other out. The small, high, narrow vases fit into each other perfectly and together they form a lovely, decorative ensemble with the sticks creating a double bottom. But even without the sticks, or with the sticks as decorative element, Bâtons is quite simply an irresistible creation.

Ceramic artist Dominique Mosseray designed these beautiful pots and vase in dishwasher-safe porcelain for D&M Depot. The delightful dented shapes, in subtle speckled white, exude tranquility and class and fit perfectly into an elegant interior. There is also a special, whimsical shape that enables any florist to showcase their creativity.

FICKLE



AAR3402
Ø 12 x H 12



AAR3410
Ø 6.5 x H 13

AAR3411
Ø 9.5 x H 23



AAR3405
Ø 5 x H 10



AAR4115
Ø 10 x H 9
AAR4116
Ø 16.5 x H 12
AAR4117
Ø 22.5 x H 15.5



AAR4118
Ø 14 x H 19



AAR4119
Ø 17 x H 8.5



BISCUIT

A beautifully made collection of fine, contemporary shapes in cast clay, of a fragile whiteness, high-fired and characterised by a wavy design. Biscuit is available in plain finish, the perfect holder for flowers and plants, or alternatively, you could opt for the more playful finish with slits, small holes and pinholes which, combined with a simple tea light, will create an interesting play of light and shade. Each range consists of a set of pots and one vase.



AAR3602
Ø 9 x H 17.5



AAR3608
Ø 13 x H 12.5
AAR3612
Ø 20 x H 17.5



BANDANA

Sober elegance is perhaps the best way to describe Bandana. This beautiful collection made from liquid coloured clay is available in different shades of grey. This extremely versatile collection consists of square and rectangular vases and pots. They bring structure to an interior without drawing attention to themselves. And because Bandana is bulk-dyed, minor damage is not noticeable.



LGI GREY WH WHITE



AAR4215 LGI | WH
7 x H 7
AAR4216 LGI | WH
11,5 x H 10
AAR4217 LGI | WH
14 x H 14
AAR4218 LGI | WH
18 x H 18
AAR4219 LGI | WH
24 x H 23



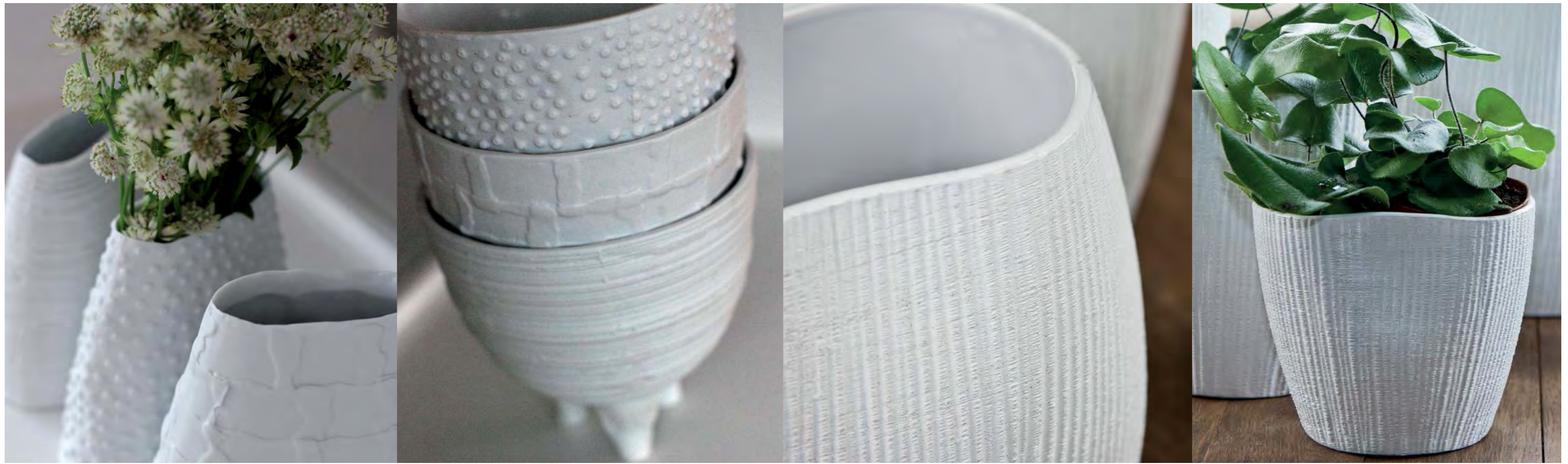
AAR4222 LGI | WH
14 x H 7



AAR4220 LGI | WH
7 x H 14
AAR4221 LGI | WH
7 x H 21



AAR4223 LGI | WH
24 x H 8
AAR4224 LGI | WH
35 x H 8

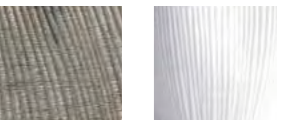


SNOW HAIL FREEZE

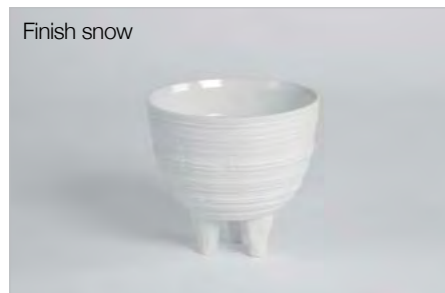
A collection that has all the qualities to surprise, excite, and charm forever. The mini pot, the small and large orchid holder, the tall oval vase, the large vases, the pot on legs and the trough are each and all masterpieces of frivolity and sensitivity. The high-shine glaze on the inside and the clay fired at high temperature on the exterior decorated with thin stripes 'Snow', small checks 'Freeze' and dots 'Hail' are a feast of 'purity, whiteness and light'.

This exclusive collection of vases has been inspired by the undulating shape and the rugged beauty of the whale. The selection includes round and oval shapes. Designed in a matt, patined finish. Available in white and bronze. Whale will put the whole house in a party mood, certainly when combined with colourful plants, orchids and flowers. They also look perfect displayed simply by themselves...

WHALE



TP TAUPE WH WHITE



Finish snow

Freeze
AAR3742
Ø 14 x H 14



Finish freeze

Freeze
AAR3735
Ø 7 x H 9.5
AAR3737
Ø 13 x H 13
AAR3738
Ø 16 x H 15



Finish hail

Snow
AAR3721
L 17 x W 11 x H 7

Freeze
AAR3740
L 12 x W 7.5 x H 12
AAR3741
L 17 x W 11 x H 7



AAR4053 TP | WH
L 19 x H 7



AAR4056 TP | WH
L 22.5 x H 14
AAR4058 TP | WH
L 34.5 x H 19.5



AAR4050 TP | WH
Ø 14.5 x H 11
AAR4051 TP | WH
Ø 16 x H 16.5
AAR4052 TP | WH
Ø 18.5 x H 19.5



AAR4059 TP | WH
Ø 19 x H 28.5

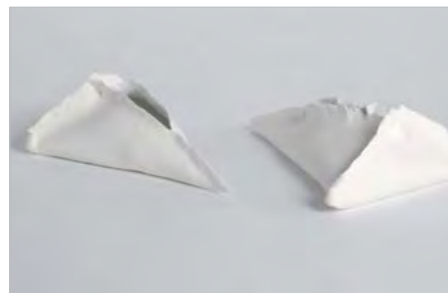


ENVELOPE

This new creation by ceramic artist Dominique Moseray is made in a small workshop where the craftsman-like characteristic of the collection is given an added dimension. The triangular ceramic forms with a small opening at the top come in small and larger versions and are excellent for using for flower arrangements. The clay edges are pinched together with fingers giving us an authentic hand-made signature.

CURL

A stunning collection of decorative ceramic pieces created by the Dutch ceramic artist Judith Bloedjes. Thick 3-cm wide strips of clay are curled to form elegant works of art that come into their own perfectly when used as wall decorations or as transparent vases, garnished with greenery or left in their pure state. The collection features a ceramic dish in which the curls can be combined to one's liking with flowers or greenery, and two small pots that are linked to each other by ceramic curls.



AAR3903 WH
L 20 x W 13 x H 8



AAR3900 WH
L 17 x W 12 x H 5
AAR3902 WH
L 20 x W 13 x H 8



AAR3393
Ø 23 x H 3



AAR3386
L 11 x W 6.5 x H 4



AAR3388
L 22 x W 7.5 x H 2.5



AAR3389
L 26 x W 16 x H 2.5



AAR3394
Ø 20 x H 4



AAR3392
L 17 x W 8 x H 5.5



NOELLE

Ceramist Noëlle Oboussier is an artist we are very happy to associate ourselves with. The spontaneity with which she has created these new pieces is, once more, proof of her unique talent. The mini vases with their natural mat exterior and glazed interior form a bouquet of earthenware in themselves. The large, square vases are an equally beautiful continuation of this.

The bouquets and plants used in this product line that is minimalist and attractive, will brighten up your interior and add a festive touch to your table.

A.ME FLOWER



AAR3509 GF | GI | WH
20 x H 7



AAR3300 RD # 3 x H 14
AAR3304 GF | RD # 7 x H 14
AAR3305 RD # 7 x H 21



AAR3303 RD # 7 x H 7
AAR3307 GF | RD # 18 x H 18
AAR3505 GF | RD # 8 x H 8
AAR3506 GF | GI | RD # 10 x H 9



AAR3133 Ø 6 x H 6.5
AAR3135 Ø 8.5 x H 9
AAR3140 Ø 13 x H 13.5



AAR3103 L 7 x W 5 x H 13 (CORK INCLUDED)
AAR3104 L 11 x W 8 x H 21 (CORK AND DISPENSER INCLUDED)



AAR3105 Ø 6.5 x H 10
AAR3107 Ø 9.5 x H 14.5



AAR3511 GI | RD | WH
L 24 x W 7.5 x H 8



AAR3381 GF L 45 x W 16 x H 2
AAR3382 GF # 17 x H 2



FIELD

Good basic shapes for small & large plants. Painted matt and with a shiny glaze and still waterproof. Made of thick red clay.



Clay straight out of nature. The advantage of this collection is that it can be used indoors and outdoors. Thanks to the fantastic quality of the natural brown clay, these pots are perfectly frost-proof. For indoor use, they've been made waterproof, without hole.

NATURE



- AAR2626 ZBM**
Ø 15 x H 15
- AAR2627 ZBM**
Ø 20 x H 18
- AAR2628 ZBM**
Ø 25 x H 22
- AAR2629 ZBM**
Ø 30 x H 27



- AAR2644 ZB**
Ø 14 x H 17



- AAR2400 ZB**
Ø 7 x H 7,5
- AAR2401 ZB**
Ø 12 x H 12,5
- AAR2403 ZB**
Ø 15 x H 16
- AAR2404 ZB**
Ø 17.5 x H 18



CLOSER

Closer repeats the shapes of Move in a ceramic collection which is equally exceptional. The same movement, the same fluidity can be seen in these mat-glazed potholders, higher dishes and vase. This makes Move Closer a deco-combination which is truly unique in its genre!

TWISTED

Small ceramic works of art. A creation that showcases yet again the unique ability of Coraly Sépulchre to create beautifully decorative designs. With one single supple hand movement a simple cylinder shape is transformed into an organic whole. A small sculpture in the form of a narrow, tall bottle and in two sizes of pots - all glazed in orange and white with a beautiful flame effect



AAR3666 OR
Ø 17 x H 13
AAR3667 OR
Ø 20 x H 15



AAR3668 OR
Ø 17 x H 26



AAR3669 OR
L 23 x W 19 x H 11



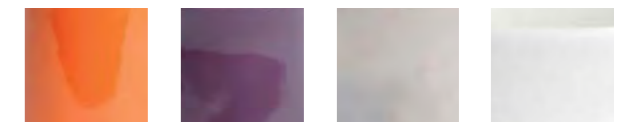
AAR3755 OR | WH
Ø 7 x H 12



AAR3757 WH
Ø 13 x H 13
AAR3758 OR
Ø 15 x H 15

Playful funnel-type shapes and fresh, winter colours combine into these porcelain containers and vases. These tall and slender creations in a red-dish orange, purple, silver and white elegantly reach out for a beautiful flower or a plant, an atmospheric bunch of flowers or a flickering tealight. A collection that stands out due to its striking design, finished in a festive, glossy glaze.

DIABOLO



DO DARK ORANGE **DP** DARK PURPLE **SI** SILVER **WH** WHITE



AAR4072 DO | DP | SI | WH
Ø 7.5 x H 14.5
AAR4073 DO | DP | SI | WH
Ø 9 x H 24.5



AAR4070 DO | DP | SI | WH
Ø 8 x H 7
AAR4071 DO | DP | SI | WH
Ø 12.5 x H 10
AAR4074 DO | DP | SI | WH
Ø 14.5 x H 13



WHIMSICAL

A mini collection fashioned by ceramist Coraly Sépulchre. Turned out of natural clay with glazed interior all the items are watertight. Three pots for mini plants, one small and one large orchid holder, two oval holders for plant and flower arrangements and two bowls make up this fun and beautifully finished ensemble that comes spontaneously to life in interiors of all kinds.



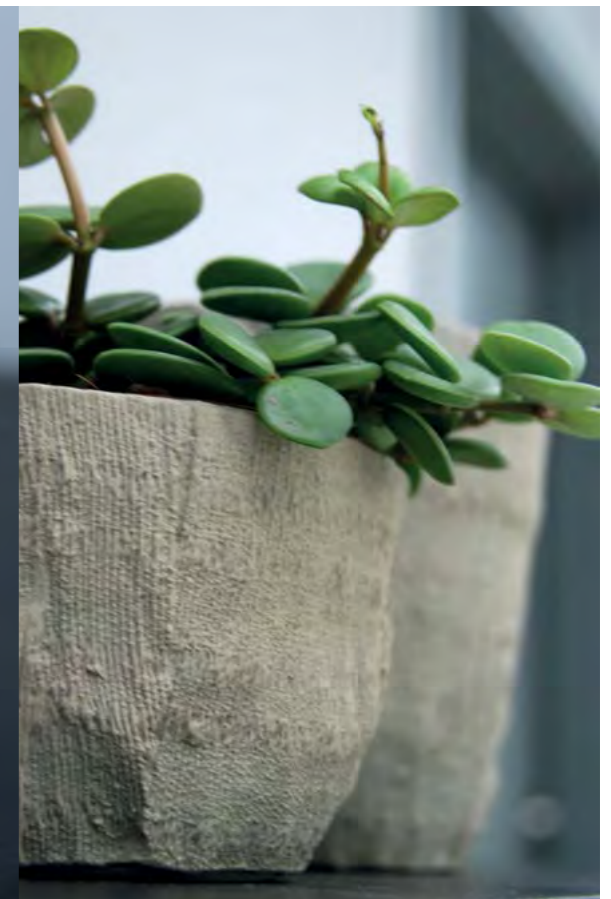
AAR3675
 Ø 8.5 x H 10
AAR3676
 Ø 13 x H 14
AAR3677
 Ø 17 x H 16



AAR3678
 L 15.5 x W 9.5 x H 13
AAR3679
 L 21.5 x W 16 x H 12.5



AAR3680
 Ø 16 x H 8.5
AAR3681
 Ø 30 x H 12.5



A creation that feels and looks quite unique. The studs created by pressing the clay outwards and the glossiness of the glaze gives these containers and vases an infectious freshness. The collection is suitable for small plants of varying sizes and the smaller items can also be used as tealight holders. Available in taupe.

RAW



AAR3866
 L 20 x W 9 x H 8

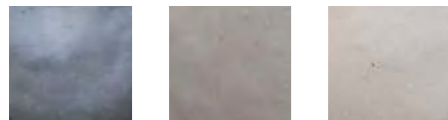


AAR3862
 Ø 14 x H 13.5



VOLCANO

They look as if they have been shaped by Mother Earth herself, or fashioned by human hands into a utility item in distant prehistoric times. The combination of rough, basic outlines and colours certainly gives the Volcano single-flower containers and tall vases an exciting extra dimension. Grey, taupe coloured and clay-like tints provide a beautiful asymmetrical finish. Available in varying sizes.



ASSORTED COLOURS



AAR4040
Ø 10 x H 7
AAR4041
Ø 17.5 x H 14.5
AAR4042
Ø 23 x H 18



AAR4043
Ø 15 x H 20



AAR4044
Ø 19 x H 14

The organic shapes and colours of ORB immediately catch the eye. D&M has opted for coloured clay, a process in which colour pigment is added to the clay. This makes for a very natural look and has the advantage that minor damage doesn't even show. ORB is available in all sorts of vases and pots. Special low shapes for orchids and special vase shapes are also available. Each package contains an equal mix of taupe and grey.

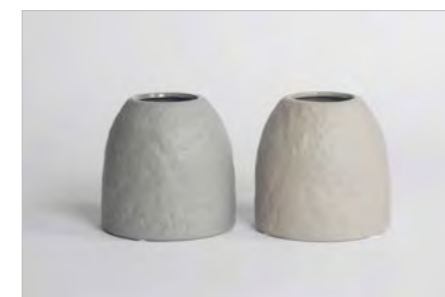
ORB



ASSORTED COLOURS



AAR4045
Ø 7,5 x H 21



AAR4047
Ø 15 x H 14,5



AAR4048
Ø 18 x H 14



AAR4049
Ø 29 x H 10



AAR4046
Ø 14 x H 21



FUMBLE

Perfection is boring and soon gets tedious. With Fumble, D&M Depot brings you a creation that is not only beautiful to look at, but fits perfectly into a laid-back lifestyle. Fumble is made of dark clay from northern China. For some of the pots the original colour was used and another group come in patinated taupe. The coarse structure of the pots makes them ideal either for outdoor or indoor use. There is a choice of various dishes, rectangular pots and six conical pots. If you want to use Fumble outdoors, make a little drainage hole in it.



DGI DARK GREY TP TAUPE



AAR4258 DGI | TP
23 x H 3.5



AAR4256 DGI | TP
Ø 14 x H 13
AAR4257 DGI | TP
Ø 17 x H 15



AAR4250 DGI | TP
Ø 7 x H 7
AAR4251 DGI | TP
Ø 11 x H 11
AAR4252 DGI | TP
Ø 14 x H 14
AAR4253 DGI | TP
Ø 19 x H 19
AAR4254 DGI | TP
Ø 25 x H 23
AAR4255 DGI | TP
Ø 35 x H 30



AAR4261 DGI | TP
Ø 30 x H 14

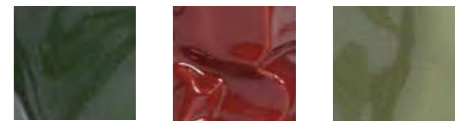


AAR4259 DGI | TP
L 20 x W 8 x H 8
AAR4260 DGI | TP
L 24 x W 12 x H 8



Do small vases have the ability to create movement in interior design? Certainly! Dance is living proof of this. A still-life choreography, executed in white, green and in the winter colours of dark green and oxblood red. A well-chosen flower or succulent plant would be ideal to set off the slender, flowing structure of the small vases. A creation to be nurtured, even better displayed in a group setting.

DANCE



KA KAKI RD RED WG W.GREEN



AAR3825 KA | RD
Ø 4 x H 7
AAR3826 KA | RD
Ø 7 x H 10
AAR3827 KA | RD
Ø 6 x H 13
AAR3828 KA | RD
Ø 7 x H 17



AAR3825 WG
Ø 4 x H 7
AAR3826 WG
Ø 7 x H 10
AAR3827 WG
Ø 6 x H 13
AAR3828 WG
Ø 7 x H 17



PLANTAGO

Seeds were the source of inspiration for this Plantago collection. Eight pots, low and high vases, characterised by their intriguing structure, their 'dented' texture and their solid execution in concrete. Available in red, green, khaki and taupe. Ideal for 2-3 orchids.



AAR3800 KA | RD | TP | WG
Ø 14.5 x H 26



AAR3804 KA | WG | RD
Ø 24 x H 16



AAR3791 KA | RD | WG
Ø 11 x H 9
AAR3792 KA | RD | WG
Ø 13 x H 11
AAR3793 KA | RD
Ø 15 x H 13
AAR3797 KA | RD | TP | WG
Ø 24 x H 22
AAR3798 RD | TP | WG
Ø 30 x H 29



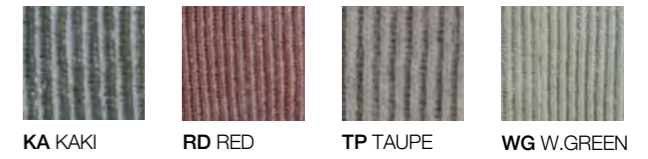
AAR3803 RD | TP
Ø 29.5 x H 13



AAR3801 KA | RD | WG
L 25 x W 8.5 x H 7

JACKET

A roughly knitted jumper structure around a sturdy concrete body. This is a creation that not only looks beautiful all by itself, but it is also a design that is ideal for setting off succulents and flower arrangements. A broad-shouldered collection available only in square shapes. Available in red, green, khaki and taupe.



AAR3812 KA | RD
14 x H 13
AAR3815 RD | TP
30 x H 29



AAR3819 TP
L 20 x W 8 x H 20



AAR3820 KA | RD | TP | WG
15 x H 30



FUSION

Nice delicate shapes. Plain bright colours. Waterproof. With fruit, flowers, plants or even empty, Fusion gives your home the right atmosphere. Fusion is now also available in the winter colours red and black.



RD RED WH WHITE ZW BLACK



AAR2583 RD | WH | ZW
Ø 33 x H 13



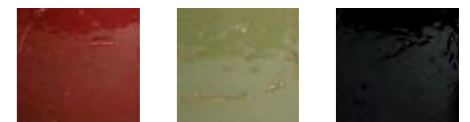
AAR2580 RD | WH | ZW
Ø 17 x H 15
AAR2581 RD | WH | ZW
Ø 24 x H 22
AAR2582 RD | WH | ZW
Ø 32 x H 31



AAR2585 RD | WH | ZW
Ø 16 x H 20
AAR2586 RD | WH | ZW
Ø 18 x H 26

EAST

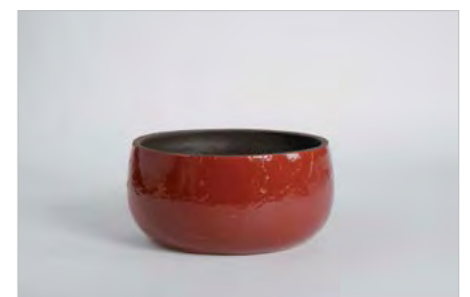
The East is omnipresent in this magnificent, traditional ensemble, thrown using thick red clay. This is entirely made by hand: a collection in which each piece is truly unique. Delicate masterpieces, coloured with extra waterproof paint on the inside and a rough crackle outer structure. Orchids are all that is missing from these sturdy pots and the green, oxblood red and black bowls.



RD RED WG W.GREEN ZW BLACK



AAR3770 ZW
Ø 14 x H 11.5
AAR3771 RD | WG | ZW
Ø 16 x H 13.5
AAR3772 ZW
Ø 19 x H 16.5
AAR3773 ZW
Ø 24 x H 22
AAR3776 ZW
Ø 30 x H 25

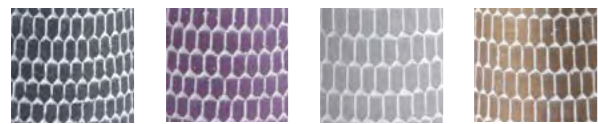


AAR3775 RD | WG | ZW
Ø 30 x H 14



FLOUNCE

A honeycomb? A tiled roof? A suit of armour? Flounce is all of this and so much more besides. This collection of pots and vases looks strong yet elegant at the same time. The beautiful, symmetrical design, the flexible shape and the combination of 4 winter colours with a bright whitewash patine... Certain to become a new classic!



DGI DARK GREY DP DARK PURPLE LGI LIGHT GREY MT METALLIC



AAR4130 DGI | DP | LGI | MT
 Ø 8.5 x H 7
AAR4131 DGI | DP | LGI | MT
 Ø 13.5 x H 10
AAR4132 DGI | DP | LGI | MT
 Ø 15.5 x H 14
AAR4133 DGI | DP | LGI | MT
 Ø 18.5 x H 17



AAR4134 DGI | DP | LGI | MT
 Ø 8 x H 20



AAR4135 LGI | DP | LGI | MT
 Ø 20 x H 28



AAR4105 GI
 Ø 15 x H 12



AAR4106 GI
 Ø 22 x W 18 x H 14
AAR4107 GI
 Ø 28 x W 23 x H 16.5



AAR4110 GI
 Ø 47 x W 17 x H 13



AAR4108 GI Ø 29 x W 14 x H 12
AAR4109 GI Ø 44 x W 22.5 x H 17

DUPLEX

Ceramist Tinne De Bruijne has created a collection of pots, in which branches, flower arrangements and orchids can be cleverly and inventively interwoven. The two sections form one single flowing entity. The matt, layered exterior gives Duplex its unique appeal. Designed in grey pigmented clay. A creation that guarantees double the decorating pleasure!



SHEET

Original, fun and artistic. How to turn a sheet of clay into a unique work of art, simply by rolling it up into a cylinder. Complemented by the sensitive, velvety soft waffle relief.

JAR

These solid, elegant ball-shaped pots, available in 2 sizes, are great to display orchids as well as quality flower arrangements.



TP TAUPE WH WHITE



AAR3747 WH
Ø 14 x H 13



AAR3748 TP | WH
Ø 6 x H 20



AAR3749 TP
Ø 14 x H 6



AAR3552 WH
Ø 27 x H 16.5

GRID

The textile texture and rounded triangular shapes are the major eye-catchers of GRID. This elegant line made of crackled ceramic shows off any floral decoration or orchid to best advantage. The white and light grey colours adapt effortlessly to any interior. D&M Depot brings you dishes, pots and vases, so that every flower lover will find something to their liking.



LGI GREY WH WHITE



AAR4200 LGI | WH
Ø 8 x H 7
AAR4201 LGI | WH
Ø 12 x H 10
AAR4202 LGI | WH
Ø 14.5 x H 12.7
AAR4203 LGI | WH
Ø 18.5 x H 15



AAR4204 LGI | WH
Ø 10 x H 19.5
AAR4205 LGI | WH
Ø 12 x H 30



AAR4206 LGI | WH
Ø 11.5 x H 5.5
AAR4207 LGI | WH
Ø 19 x H 6



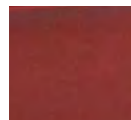
AAR4208 LGI | WH
L 21.5 x H 6.5
AAR4209 LGI | WH
L 32 x H 6.5



TULIP

A collection that goes back to the archetypal shape of a tulip, with the specific 'tulip seam' being the most striking feature. The crackle texture gives every pot a very authentic look and feel. Tulip is open to a whole host of arrangements: draping of plants and/or leaves and one or several orchids. Available in crackle taupe and plain red.

MEDUSE



RD RED

TP TAUPE

D&M depot brings sealife to life in this magnificent rounded shape, inspired by Medusa. The real eye-catcher in this collection is the beautiful low profile dish, which provides plenty of space for 2, or even 3, orchids. This is a design, which, correctly arranged, will make a great impression in any interior. Available in crackle taupe and plain red.

LOTUS

A vibrant oval ceramic dish and a set of bright red traditional flowerpots in five different sizes are the perfect home for miniature plants, small and large orchids ... This collection will be a sure hit with both flower and design lovers. The delicate design and vibrant colour of this traditional, glazed ceramic set with its ridged edging will really bring your plants and flowers to life.



AAR3881 RD
Ø 25 x H 15.5
AAR3882 RD
Ø 30 x H 17



AAR3888 RD | TP
Ø 30 x H 14



AAR3883 RD | TP
Ø 36 x H 21



AAR3893 RD | TP
37 x H 18



AAR3890 RD / Ø 15 x H 11
AAR3891 RD / Ø 17 x H 13
AAR3892 RD / Ø 23 x H 15.5



AAR3630 RD
Ø 7 x H 6.5
AAR3631 RD
Ø 9 x H 9
AAR3632 RD
Ø 11 x H 10
AAR3633 RD
Ø 14 x H 13



AAR3638 RD
L 24 x W 7.5 x H 8



TANGLE

Powerful lines, grooves full of colour: that is what makes Tangle so striking. And yet this is a rather sober collection that excels in its simplicity. The crackled glaze in grey, pink, raspberry and white emphasises the stripes even more. Tangle is available in four pots and one vase.



AAR4190 FR | LGI | RO | WH
 Ø 8 x H 7
AAR4191 FR | LGI | RO | WH
 Ø 11 x H 10
AAR4192 FR | LGI | RO | WH
 Ø 15 x H 13
AAR4193 FR | LGI | RO | WH
 Ø 18 x H 17

AAR4194 FR | LGI | RO | WH
 Ø 14 x H 21

AFRICA

Just think of an African landscape and there you have it... Africa. White, fluorescent yellow, light grey, pale pink are the colours that will brighten up the early Spring. The pale pink and light grey combine perfectly with the black interior that extends just over the edge. White and fluorescent yellow have a fresh white interior.



AAR4160 DO | DP | FG | LGI | RO | RD | WH
 Ø 7.5 x H 6.5
AAR4161 DO | DP | FG | LGI | RO | RD | WH
 Ø 12 x H 10.5
AAR4162 DO | DP | FG | LGI | RO | RD | WH
 Ø 14 x H 13.5
AAR4163 DO | DP | FG | LGI | RO | RD | WH
 Ø 17 x H 16.5
AAR4164 DO | DP | FG | LGI | RO | RD | WH
 Ø 23 x H 21

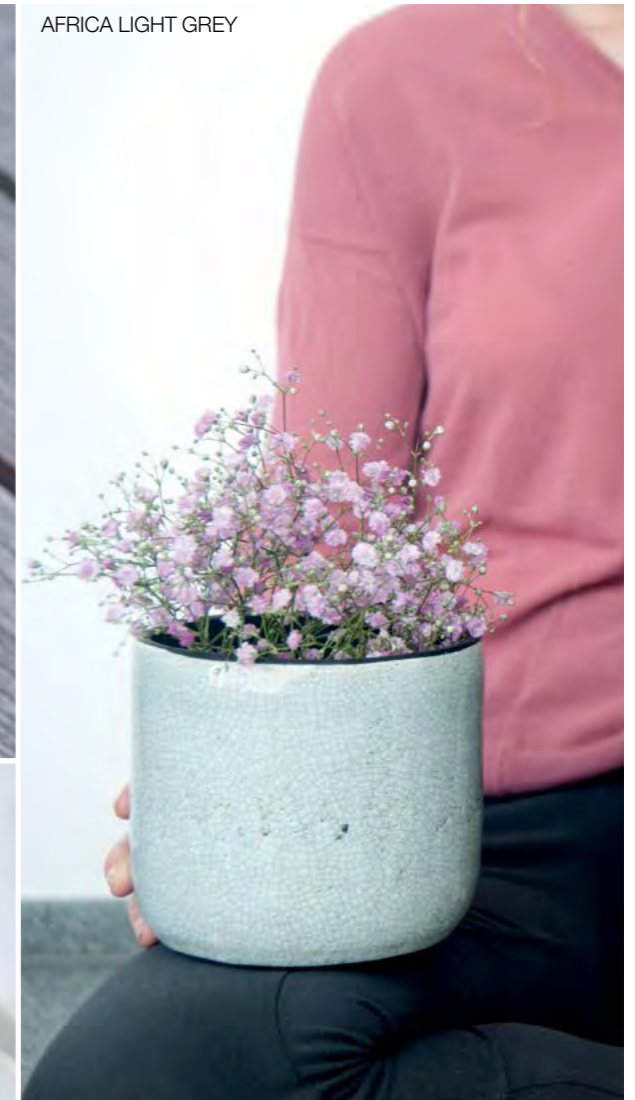
AAR4165 DO | DP | FG | LGI | RO | RD | WH
 Ø 13.5 x H 26.5

AAR4166 DO | DP | FG | LGI | RO | RD | WH
 L 17.5 x W 9 x H 8.5

THINK PINK
BE OPTIMISTIC AND POSITIVE



AFRICA LIGHT GREY



BASIC P2 SHINNY



BASIC WHITE MAT



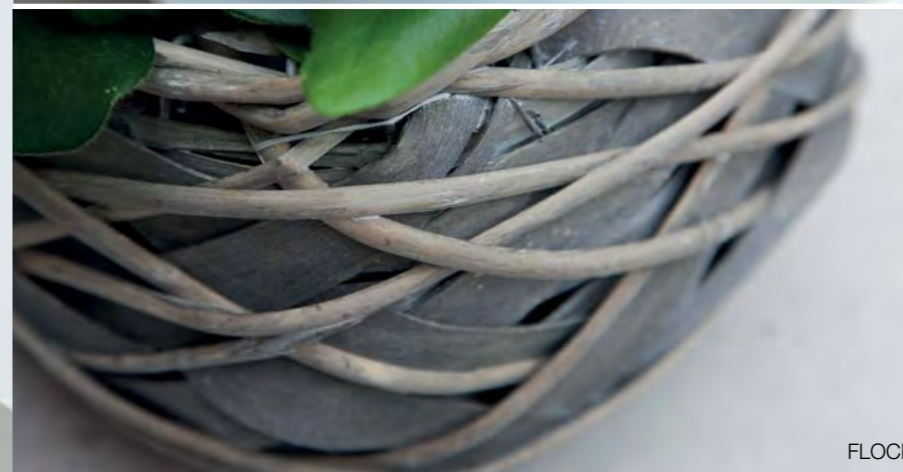
DROPLETS WHITE



DOMINIK WHITE



MICMAC DARK RED



FLOCK



FLOUNCE LIGHT GREY



D&M

depot

d&mdepot

**BASIC CERAMICS
BASIS KERAMIEK
CERAMIQUE DE BASE
BASISKERAMIK
CERAMICA DI BASE**



BASIC SHINY

A perfect sized pot for all kinds of plants. Waterproof, seventeen colours, shiny glaze. Fits perfectly into all modern or classical interiors.



AAR1015 AU | BF | DGI | FU | GD | GFN | GO
LGI | OR | P2 | P3 | SI | WH | WI | ZW
Ø 6.8 x H 6.8
AAR1017 AB | AU | BF | DGI | FU | GD | GFN | GO
LGI | OR | P2 | P3 | SI | WH | WI | ZA | ZW
Ø 10.5 x H 10.5
AAR1018 AU | DGI | FU | GD | GFN | GO | LGI |
OR | P2 | P3 | SI | WH | WI | ZW
Ø 13 x H 13
AAR1021 AU | DGI | FU | GD | GFN | GO | LGI
OR | P2 | P3 | SI | WH | WI | ZW
Ø 17 x H 16.5
AAR1023 AU | DGI | FU | GD | GFN | GO | LGI
OR | P2 | P3 | SI | WH | WI | ZW
Ø 20.5 x H 20.5



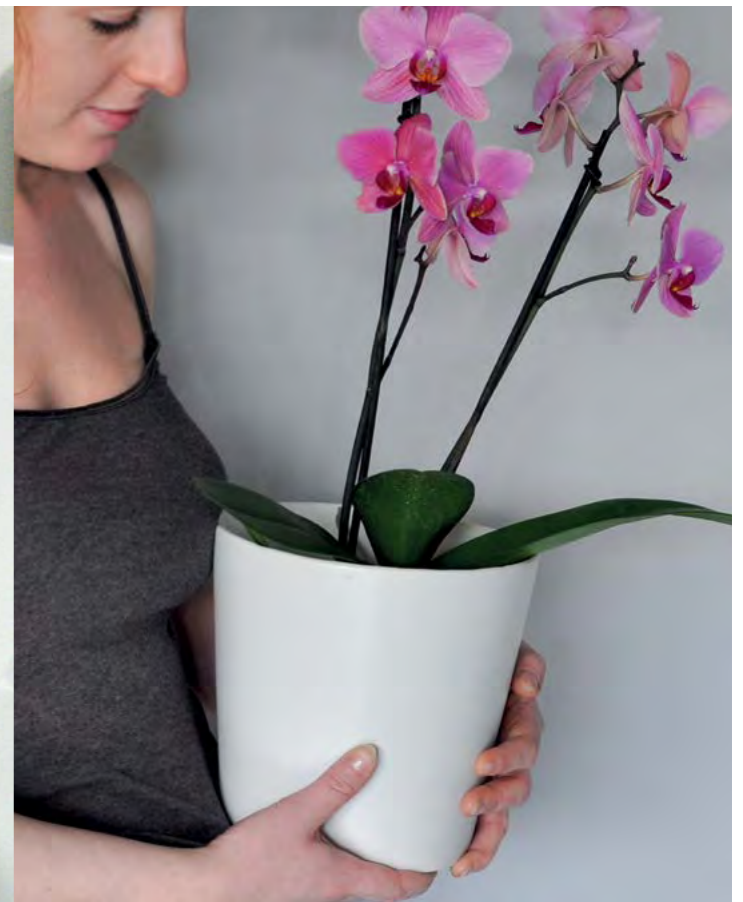
AAR1155 AB | AU | BF | DGI | FU | GD | GFN | GO
LGI | OR | P2 | P3 | SI | WH | WI | ZA | ZW
Ø 14 x H 14
AAR1019 ZW
Ø 19 x H 19



AAR1014 AU | DGI | FU | GD | GFN | GO
LGI | OR | P2 | P3 | SI | WH | WI | ZW
7 x H 7
AAR1156 AU | BF | DGI | FU | GD | GFN | GO
LGI | OR | P2 | P3 | SI | WH | WI | ZW
11.5 x H 11.5
AAR1157 AB | AU | DGI | FU | GD | GFN | GO
LGI | OR | P2 | P3 | SI | WH | WI | ZW
14 x H 14
AAR1158 AU | DGI | FU | GD | GFN | GO | LGI
OR | P2 | P3 | SI | WH | WI | ZW
16.5 x H 17.5

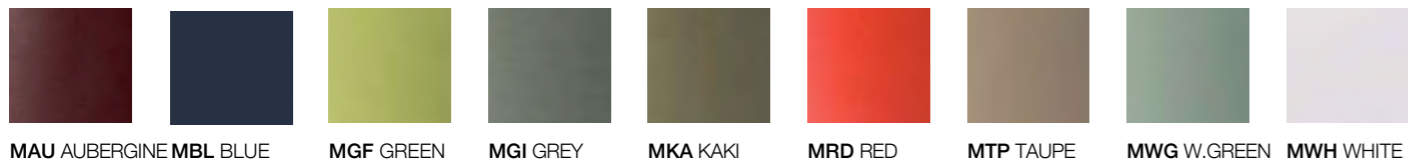


AAR1033 AU | DGI | FU | GD | GFN | GO | LGI
OR | P2 | P3 | SI | WH | WI | ZW
L 26.5 x W 15 x H 14

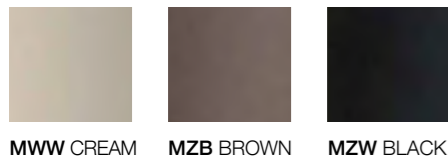


BASIC MATT

A perfect sized pot for all kinds of plants. Waterproof, eleven colours, mattglaze. Fits perfectly into all modern or classical interiors.



MAU AUBERGINE MBL BLUE MGF GREEN MGI GREY MKA KAKI MRD RED MTP TAUPE MWG W.GREEN MWH WHITE



MWW CREAM MZB BROWN MZW BLACK



AAR1041 MAU | MGF | MWH | MZW
14 x H 14

AAR1015 MAU | MBL | MGF | MGI | MKA | MRD
MTP | MWH | MWW | MZB | MZW
Ø 6.8 x H 6.8
AAR1017 MAU | MBL | MGF | MGI | MKA | MRD
MTP | MWH | MWW | MZB | MZW
Ø 10.5 x H 10.5
AAR1018 MAU | MBL | MGF | MGI | MKA | MRD
MTP | MWH | MWW | MZB | MZW
Ø 13 x H 13
AAR1021 MAU | MBL | MGF | MGI | MKA | MRD
MTP | MWH | MWW | MZB | MZW
Ø 17 x H 17
AAR1022 MAU | MGF | MGI | MKA | MRD | MTP
MWH | MWW | MZB | MZW
Ø 18 x H 18
AAR1023 MAU | MBL | MGF | MGI | MKA | MRD
MTP | MWH | MWW | MZB | MZW
Ø 20.5 x H 20.5
AAR1025 MAU | MGF | MGI | MKA | MRD | MTP
MWH | MWW | MZB | MZW
Ø 23 x H 22

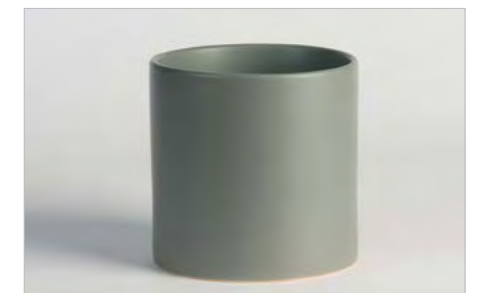
AAR1014 MAU | MBL | MGF | MGI | MKA | MRD
MTP | MWH | MWW | MZB | MZW
7 x H 7
AAR1156 MAU | MBL | MGF | MGI | MKA | MRD
MTP | MWH | MWW | MZB | MZW
11.5 x H 11.5
AAR1157 MAU | MBL | MGF | MGI | MKA | MRD
MTP | MWH | MWW | MZB | MZW
14 x H 14
AAR1158 MAU | MBL | MGF | MGI | MKA | MRD
MTP | MWH | MWW | MZB | MZW
16.5 x H 17.5
AAR1165 MAU | MGF | MGI | MKA | MRD | MTP
MWH | MWW | MZB | MZW
19 x H 18



AAR1031 MAU | MGF | MGI | MKA | MRD | MTP
MWH | MWW | MZB | MZW
L 19 x W 7 x H 7
AAR1032 MAU | MGF | MGI | MKA | MRD | MTP
MWH | MWW | MZB | MZW
L 24 x W 7 x H 7



AAR1033 MAU | MBL | MGF | MGI | MKA | MRD
MTP | MWH | MWW | MZB | MZW
L 26.5 x W 15 x H 14
AAR1034 MAU | MGF | MGI | MKA | MRD | MTP
MWH | MWW | MZB | MZW
L 39.5 x W 14 x H 14



AAR1155 MAU | MBL | MGF | MGI | MKA | MRD
MTP | MWH | MWW | MZB | MZW
Ø 14 x H 14
AAR1019 MAU | MGF | MGI | MKA | MRD | MTP
MWH | MWW | MZB | MZW
Ø 19 x H 19



AAR1035 MAU | MGF | MGI | MKA | MRD | MTP
MWH | MWW | MZB | MZW
12 x H 8
AAR1036 MAU | MGF | MGI | MKA | MRD | MTP
MWH | MWW | MZB | MZW
L 24 x W 12 x H 8



AAR1166 MAU | MGF | MGI | MKA | MRD | MTP
MWH | MWW | MZB | MZW
L 28 x W 14 x H 14



AAR1038 MAU | MGF | MGI | MKA | MRD | MTP
MWH | MWW | MZB | MZW
13 x H 20
AAR1039 MAU | MGF | MGI | MKA | MRD | MTP
MWH | MWW | MZB | MZW
13 x H 30
AAR1040 MAU | MGF | MGI | MKA | MRD | MTP
MWH | MWW | MZB | MZW
13 x H 40





D&M

depot

d&mdepot

**PRESENTS
GESCHENKEN
CADEAUX
GESCHENKE
REGALI**



DROPLET

Bring a droplet of atmosphere into a bathroom or toilet with beautiful Droplet hanging vases from D&M Depot. These thingummies made of coloured clay finished with grains of sand are available in white and taupe and blend seamlessly with any interior. Droplet comes in a beautiful gift box. All you have to do is choose between a gift with three small droplets or one large droplet.



NEST

What better way to bring a bit of Spring indoors than with these original vases from D&M Depot? These porcelain vases for a single flower look like cute bird houses. But they do have the advantage that the roof comes off, making them easy to clean. The stem of the flower just goes down the chimney. They are available in two sizes and come in a nice gift box.



ONLY AVAILABLE IN GIFTBOX - 3 PIECES/BOX



ONLY AVAILABLE IN GIFTBOX - 1 PIECE/BOX



AAR4175 TP | WH
L 15 x W 4



AAR4176 TP | WH
L 24 x W 5



ONLY AVAILABLE IN GIFTBOX
1 PIECE/BOX



AAR4185 WH
Ø 5.4 x H 20.7
AAR4186 WH
Ø 6.9 x H 28.2



BUDDY

Drinking mugs containing 3-dimensional animal figures. A topic for conversation. They are certainly eye-catching and also great fun. Would you like a juice or a cup of coffee? Then grab the bull by the horns! If you so wish, you can also use the mugs as small vases. After all, cows, horses, piglets and dogs blend in beautifully with a small plant or wild flowers! The 4 creme-coloured ceramic buddy mugs are available in a fun gift pack. Makes an ideal holiday celebration gift.



ONLY AVAILABLE IN GIFTBOX - 1 PIECE/BOX



AAR4140
Ø 8
ASSORTED FIGURES



MOONY

This smart holder only needs a tealight in its centre to create a cosy and intimate setting... It is designed in ultra-thin, transparent porcelain for a magnificent see-through effect. Each little holder is a unique creation, because they are all handmade and each is enveloped in a different type of textile structure. This pack of 3 holders wrapped in a special small box makes an original holiday celebration gift. Attach a little gift tag to add an original, hand-written message.

Giving flowers or a plant as a holiday celebration gift? This beautiful pendant in matt white porcelain will set them off beautifully. A small gift which will be much appreciated by the girls and mum alike. Beautifully packaged in a special gift box. With a small gift tag to add an original, hand-written message.

NECKLACE



ONLY AVAILABLE IN GIFTBOX - 3 PIECES/BOX



AAR4150 3 PIECES/BOX
Ø 7 x H 7



ONLY AVAILABLE IN GIFTBOX/1 PIECE/BOX



AAR4153
Ø 2.5 x H 5



D & M

depot

d&mdepot

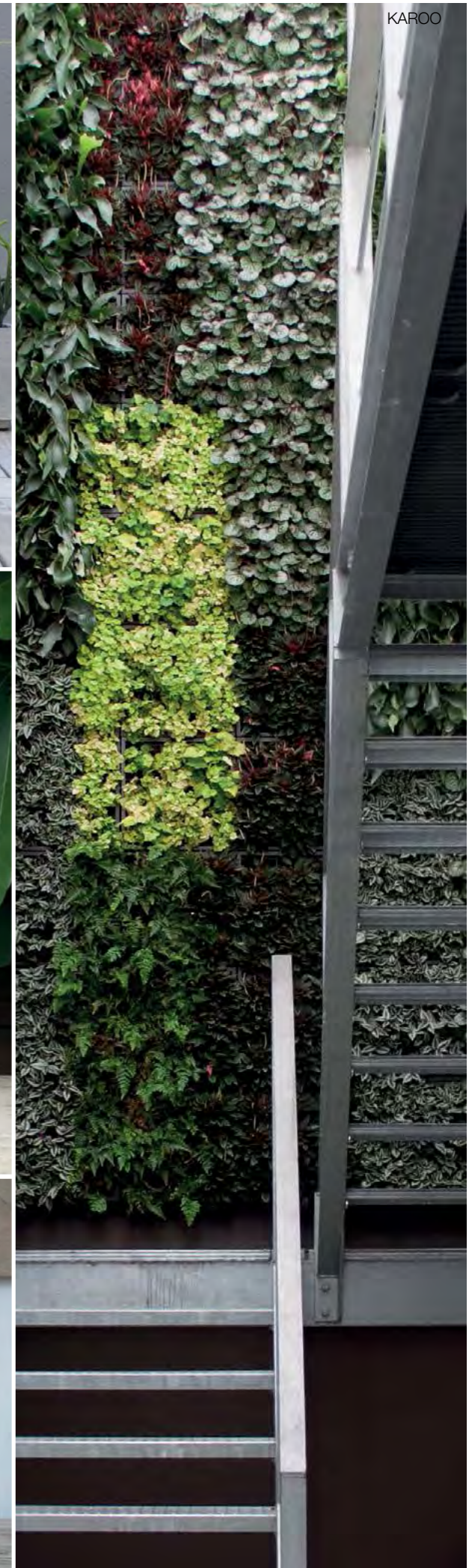
GARDEN CORNER

THINK GREEN BE RELAXED AND CREATIVE

A touch of greenery in the workplace, office or home ... it inspires and motivates. A little greenery here and there reduces noise, improves air quality and inevitably creates more atmosphere. It improves your health and mood and stimulates the imagination. The unique Garden Corner concept from D&M Depot is the perfect blend of aesthetics and quality of life. However compact your living or work space, it is still possible to enjoy all the benefits of a garden. Whether you choose Karoo or the new concepts Hive, Briq and Urban Farm, there is now always room for a splash of green.



BRIQ



KAROO



URBAN GARDEN



FUMBLE



HIVE



BASIC



POTTINA & POTTONE



HIVE

HIVE is the result of a final project for the "Karel de Grote Hogeschool" in Antwerp. The team was given the go-ahead by D&M to develop their space-saving concept. As the name suggests, HIVE is inspired by a honeycomb. The stackable hexagonal concrete pots can be used to build a soothing organic wall or partition. How? By using the screws supplied. But even individually, HIVE looks beautiful. Thanks to the hexagonal shape, light can play on it freely, so it can even be put in front of a window. HIVE is presented in an attractive package and is an ideal gift. Available in patinated grey or taupe.



NGI STONE GREY TP TAUPE



B084 NGI | TP
L 30 x W 26 x H 13

With BRIQ, D&M Depot is giving a recently graduated designer the opportunity to take his first steps in the design world. Jens Milonton from Antwerp designed BRIQ as a playful way to build your own touch of greenery. With stackable square or round pots - reminiscent of toy bricks - you build a green zone in a very dynamic way. Ideal for demarcating a space, stack them as a partition or arrange them however you like. The concrete blocks, available in patinated grey or taupe, ensure the perfect greenery comes into its own. With a hole for drainage, BRIQ is also suitable for outdoor use.

BRIQ



NGI STONE GREY TP TAUPE



B080 NGI | TP
L 32 x W 8.5 x H 11
B081 NGI | TP
L 44 x W 13 x H 15

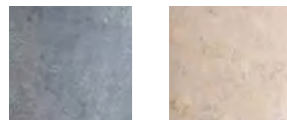


B082 NGI | TP
L 32 x W 11 x H 11
B083 NGI | TP
L 51 x W 15 x H 17



FUMBLE

Perfection is boring and soon gets tedious. With Fumble, D&M Depot brings you a creation that is not only beautiful to look at, but fits perfectly into a laid-back lifestyle. Fumble is made of dark clay from northern China. For some of the pots the original colour was used and another group come in patinated taupe. The coarse structure of the pots makes them ideal either for outdoor or indoor use. There is a choice of various dishes, rectangular pots and six conical pots. If you want to use Fumble outdoors, make a little drainage hole in it.



DGI DARK GREY TP TAUPE



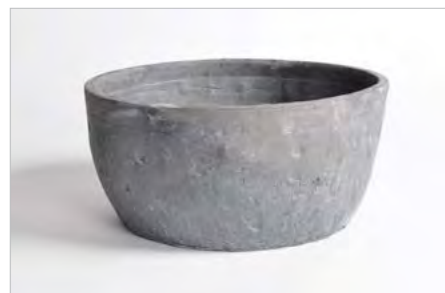
AAR4258 DGI | TP
23 x H 3.5



AAR4256 DGI | TP
Ø 14 x H 13
AAR4257 DGI | TP
Ø 17 x H 15



AAR4250 DGI | TP
Ø 7 x H 7
AAR4251 DGI | TP
Ø 11 x H 11
AAR4252 DGI | TP
Ø 14 x H 14
AAR4253 DGI | TP
Ø 19 x H 19
AAR4254 DGI | TP
Ø 25 x H 23
AAR4255 DGI | TP
Ø 35 x H 30



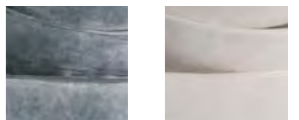
AAR4261 DGI | TP
Ø 30 x H 14



AAR4259 DGI | TP
L 20 x W 8 x H 8
AAR4260 DGI | TP
L 24 x W 12 x H 8

URBAN FARM

Ceramic artist Lieve Bergmans invented for D&M Depot a great way to garden organically on a very compact scale. With URBAN FARM, you can mix biodegradable kitchen waste with a little compost and then plant herbs in it. These clay pots are designed so that you can anchor them easily in a bit of space or around a pole. So you can enjoy a magnificent organic garden to fit your available space. These organically shaped pots are available in taupe or patinated grey.



NGI STONE GREY TP TAUPE



B085 NGI | TP
L 31 x W 22 x H 22



KAROO

D&M is proud to present Karoo, a 'green' concept for façades that adds an irresistible touch of greenery to any setting thanks to its simple indoor or outdoor modular system. Karoo is a Belgian product that was designed in partnership with the young product developer Jiri Vermeulen. The basic element is 40x40 cms and can hold nine plants. The fabric structure guarantees its attractive appearance. A partnership with DCM resulted in a special kind of potting soil that is ideal for vertical installations. The modules are made of recycled materials and are available in dark grey and white. Karoo is quick and easy to install. Designed & Made in Belgium. For all information visit www.karoo-dmdepot.be



DGI DARK GREY WH WHITE



ONLY AVAILABLE IN GIFTBOX
Giftbox contains: 1 Karoo - Soil - 1 manual



KA01 DGI | WH
40 x H 14
SUB001
70 L



Invite nature into your home using this modular pot : the natural process of absorbing water in your living room. Pottina & Pottone is not only optimized for easy use, it is also designed for the needs of the plant. The ceramic stores and controls the amount of water and assures air circulation. A perfect design to simplify care and watering! Combine 4 trendy colours to create your own beautiful indoor garden. This is not a standard pot, this is a self-sufficient system designed to make life easier!

POTTINA & POTTONE



ONLY AVAILABLE IN GIFTBOX



AAR4170 TR
W 13 x H 20
AAR4171 TR
W 19.5 x H 30



AAR4170 TP
W 13 x H 20
AAR4171 TP
W 19.5 x H 30



AAR4170 DGI
W 13 x H 20
AAR4171 DGI
W 19.5 x H 30



AAR4170 GR
W 13 x H 20
AAR4171 GR
W 19.5 x H 30



D&M

depot

d&mdepot

**WOOD
HOUT
BOIS
HOLZ
LEGNO**

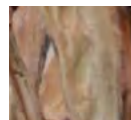


WILD

Wood in all its basic simplicity, its innate strength, its natural beauty. Ready to be blended with plants and flowers and winter lights. A collection which literally goes back to the roots of ginger, azalea and mulberry wood. The result: a whole parade of dishes and bowls inviting you to fill and arrange them with plant material. A collection that will trigger a flurry of ideas.

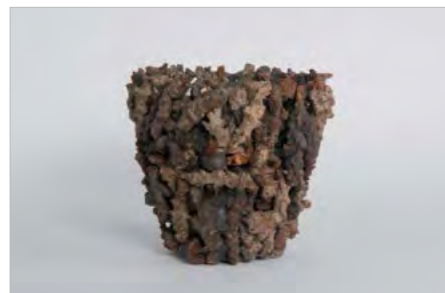
TWIG

D&M Depot proves that tea trees produce more than just leaves, with TWIG. This beautiful line, made from branches of tea trees from northern China (Lu'an City), are easy on the eye. TWIG is available in various shapes and sizes, some featuring a glass pot so you can give free rein to your creativity. TWIG is perfect for making decorative floral arrangements, shows off orchids at their best, and brings an interior to life.



A AZALEA

G GINGER



H376 A | G
Ø 26 x H 25



H377 A | G
SET OF 2
Ø 24 x H 15
Ø 45 x H 35



H378 A | G
L 48 x W 38 x H 22



RIE1099
L 55 x W 26 x H 13



RIE1095
Ø 18 x H 18



RIE1098
SET OF 2
Ø 45 x H 27
Ø 34 x H 19



RIE1097
SET OF 2
Ø 41 x H 18
Ø 29 x H 15



RIE1096
Ø 28 x H 16



TWINE

A piece of coral? No. A shell? No again. Twine is a concept that takes its inspiration from the twigs of the Tea Tree. The hand-made bowls with the integration of recycled glass can be used to create any imaginable object. From a decorative vase or tea light to structures in which flowers or plants can be interwoven through the structure of branches. A unique D&M creation inspired by Australia's tree of wonder.



H360 INCL. GLASS
Ø 50 x H 30



BLOND

This magnificent collection of exotic containers and plates, which look beautiful even without any flower decoration, has been designed from the wood of the Anna Paulowna tree. The wood of this tree is similar to that of an oak but somewhat fuller and richer in colour. The red hues in the wooden structure give these creations a timeless patina, which is further enhanced by the organic shape and the grain of the wood. Blond brings warmth and atmosphere into any living environment.



H368
L 71 x W 28 x H 16



H365
L 30 x W 16 x H 8
H366
L 43 x W 23 x H 11.5
H367
L 54 x W 29.5 x H 13



H370
Ø 18 x H 17.5
H371
Ø 22 x H 21.5
H372
Ø 27.5 x H 27



D&M

depot

d&mdepot

GLASS
GLAS
VERRERIE
GLAS
VETRO



VITRO

This mini-collection shows how you can create objects in recycled glass that give a whole new meaning to the flowerpot concept. Two reverse conic pots in four sizes will instantly appeal to your creative side. The beautifully painted, mat exterior and wide range of colours including grey, green, pink, red, orange and taupe lend themselves to endless creative combinations.



GF GREEN GI GREY OR ORANGE RD RED RO PINK TP TAUPE



GL820 GI | RD | RO
 Ø 8.5 x H 6.5
GL821 RD | RO
 Ø 14 x H 12
GL822 GF | GI | OR | RD | RO | TP
 Ø 16 x H 14
GL823 GF | OR | RD | RO | TP
 Ø 18 x H 17



A glass collection which exudes movement thanks to its beautiful, fluid combination of design, structure and thickness. The glass is of exceptional quality, available in aubergine, grey and orange. Four flower vases, two plates and one tall vase make up this gorgeous range of decorative design which also looks fabulous in combination with Closer ...

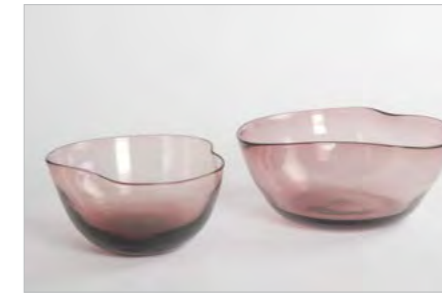
MOVE



AU AUBERGINE OR ORANGE LGI GREY



GL789 OR
 Ø 17 x H 26



GL787 AU | OR
 L 26 x W 19 x H 11
GL788 AU | LGI | OR
 L 33 x W 26 x H 12

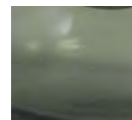
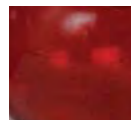


GL782 OR
 Ø 12 x H 11
GL783 OR
 Ø 15 x H 12
GL784 AU
 Ø 20 x H 15
GL785 LGI | OR
 Ø 23 x H 22



OXYGEN

A collection that breathes pure craftsmanship. And authenticity. And love for the craft. Every item is mouth-blown, with a choice of triangular or teardrop shapes, available in small sizes, a high vase and a higher vase still. A real feast of transparency and airy class. Decorative all on its own and a heaven-sent gift for florists.



RD RED

WG WATERGREEN



GL833 RD | WG
Ø 16 x H 30



GL830 RD | WG
Ø 9 x H 8
GL831 WG
Ø 15 x H 10,5
GL832 WG
Ø 21 x H 16



GL837 RD | WG
Ø 10 x H 10
GL838 RD | WG
Ø 14 x H 14
GL839 RD | WG
Ø 21 x H 22

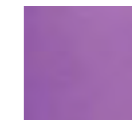


GL840 RD | WG
Ø 21 x H 31
GL841 RD | WG
Ø 22 x H 40

CLASSIC

Does glass retain its purity and lustre, even after recycling? How do you breathe new life into it, give it a new, useful purpose? The Classic collection answers these questions with a beautiful range of 'classic' products. Five pots, two vases and one bottle form a stunning decorative set, particularly when adorned with a cheerful flower or small plant.

Classic has now received a new addition with creations in recycled glass that fit in beautifully with the existing collection. Three new trendy colours give these must-haves a truly irresistible look and feel.



DO DARK ORANGE

DP DARK PURPLE

TP TAUPE

TR TRANSP



GL807
Ø 6 x H 19



GL805
Ø 7 x H 21
GL806 DP | DO | TP | TR
Ø 13 x H 24



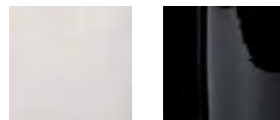
GL800
Ø 8 x H 8
GL801
Ø 10 x H 10
GL802
Ø 12 x H 12
GL803 DP | DO | TP | TR
Ø 14 x H 13
GL804 DP | DO | TP | TR
Ø 16,5 x H 15



LUMINOSITY

ROUND | SQUARE

A carefully thought-out machine-made collection. Coloured in between the two layers of glass. Tea lights, one flower vases and bowls for creating attractive flower arrangements. A basic collection that offers the perfect way to bring a decorative touch to all types of interior.



TR LUCID ZW BLACK



GL550 TR | ZW
Ø 15 x H 8



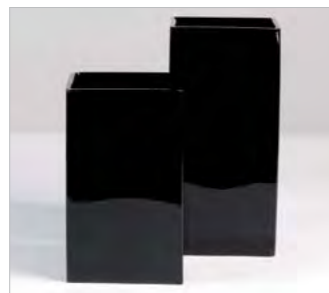
GL551 TR
Ø 15 x H 17



GL570 ZW
Ø 14 x H 15



GL569 TR
L 23 x W 18 x H 10



GL566 ZW
12 x H 25



GL561 TR
L 16.5 x W 5 x H 10



GL564 ZW
12 x H 12
GL568 TR
20 x H 20

MOON MILK

The makers of this small but fine frosted glass range were inspired by the romantic image of an evening bathed in soft moonlight. All you need to create beautiful, fabulous arrangements which will evoke a real fairytale-like feel... Matt, sand-blasted glass. This stylish collection is the result of these two extra treatments. The fine single-flower-vases of Milk are very elegant in group, mixed in colours and sizes.



AU AUBERGINE GI GREY RD RED WH WHITE GI GREY RD RED RO PINK WH WHITE



GL695 RD | WH
Ø 4 x H 28
GL696 RD | WH
Ø 5.5 x H 46



GL777 GI | RD | RO | WH
Ø 14.5 x H 29



BLOW

Blown glass. Makes each vase a unique piece. Solid yet elegant. Fits perfectly into all types of classical or modern living room.

SHAPED

This glass collection is a brilliant example of design 'teamwork'. It distinguishes itself by a range of different shapes but also by what happens to those shapes when you bring them together. They end up creating something of a near perfect groupe. Transparent, brown, aubergine, white and green vases have never been o more perfect match.



AU AUBERGINE GF GREEN RD RED ZB BROWN



GL501 GF | RD | ZB | AU
Ø 23 x H 63



GL502 AU
Ø 7 x H 6
GL513 AU | GF | RD
Ø 20 x H 20



AU AUBERGINE GF GREEN TR LUCID WH WHITE ZB BROWN



GL711 AU | GF | WH
Ø 15 x H 26
GL712 AU
Ø 17 x H 18
GL713 GF | WH | ZB
Ø 17 x H 18



GL704 ZB
Ø 8 x H 12
GL701 ZB
Ø 7 x H 14
GL700 ZB
Ø 7 x H 9
GL703 ZB
Ø 8 x H 9



D&M

depot

d&mdepot

**WICKER
RIET
ROSEAU
SCHILF
CANNA**



Ever heard of corn cane? This versatile natural material lends itself perfectly to basket-making. They have a decorative as well as functional appeal, and can be used as storage baskets for the bathroom, newspapers, logs, and of course as a flowerpot. They are reinforced with an iron frame and the various flower pots have a plastic interior finish. Meadow appeals to florists and decoration specialist and is available in taupe grey.

MEADOW



RIE1089
Ø 19 x H 21



RIE1088 (SET OF 2)
L 60 x H 22
L 50 x H 17



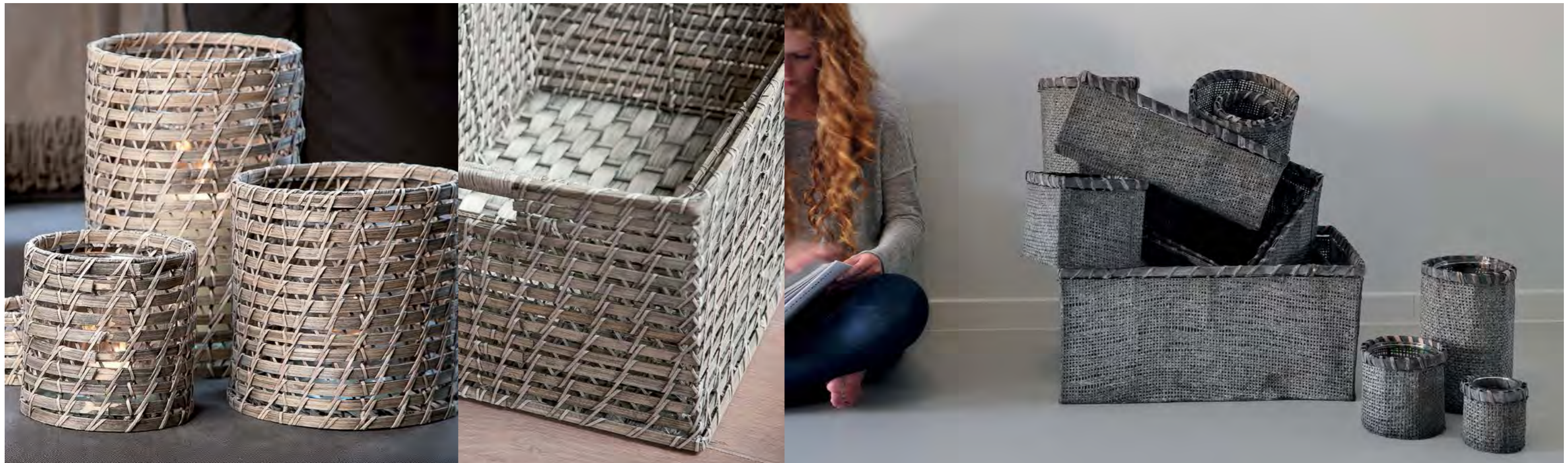
RIE1087 (SET OF 3)
L 58 x H 29
L 45 x H 20
L 36 x H 15



RIE1086
Ø 30 x H 10



RIE1081
Ø 12 x H 10
RIE1082
Ø 15 x H 13
RIE1083
Ø 19 x H 17
RIE1084
Ø 24 x H 22



LEAN

Decorative, practical and a real all-rounder. Items of this collection will look right at home anywhere in your decor, 'light fitting' or vase ... The Lean basket collection offers great versatility through several square and rectangular items of various sizes, as well as the equally beautifully finished round version with glass tea light holder.

HOOK

Why process flax into linen when the raw material is already so beautiful? With Hook, D&M Depot brings you a sublime variety of pots and baskets that feel at home in any interior. From atmospheric tealights to newspaper baskets, storage baskets to orchid pots, it's all there. The smaller baskets for flowers and orchids have a plastic coating, and the round models come with a recycled glass container. And now? Just follow your heart and choose between patinated grey or natural colour.



LGI LIGHT GREY NA NATUREL



RIE907
15 x H 14



RIE906 SET OF 2
15 x H 14
20 x H 18



RIE903 INCL. GLASS
Ø 20 x H 30



RIE1105 INCL. GLASS LGI | NA
Ø 10 x H 10
RIE1106 INCL. GLASS LGI | NA
Ø 14,5 x H 13,5
RIE1107 INCL. GLASS LGI | NA
Ø 16 x H 25
RIE1108 INCL. GLASS LGI | NA
Ø 20 x H 32,5



RIE1113 LGI | NA
L 40.5 x H 14.5



RIE1114 SET OF 3 LGI | NA
L 55 x H 25.5 / L 46.5 x H 20.5 / L 37 x H 15.5



RIE1110 LGI | NA
14.5 x H 13.5
RIE1111 LGI | NA
18 x H 16



RIE1112 SET OF 2 LGI | NA
30 x H 23 / # 25 x H 21.5



FLOCK

Willow and wood beautifully come to the fore in the unique and extensive Flock collection. A lattice-work of wood, bound together by twigs and enriched by a beautiful grey patina. Available in round, square, oblong, high and low shapes and sizes for great versatility.

STRAP

Willow in all its beauty. Fashioned into flexible, round shapes and slender vases. All that is missing is an elegant orchid, a flower arrangement or something eccentric. Beautifully finished in warm winter colours: metallic bronze and a reddish orange.



DO DARK ORANGE MT METALLIC



RIE1059
L 50 x W 18 x H 14



RIE1052
Ø 17 x H 13



RIE1054 SET OF 3
Ø 29 x H 21 / Ø 39 x H 28 / Ø 50 x H 36



RIE1050
Ø 22 x H 8



RIE1053 SET OF 2
Ø 21 x H 15 / Ø 30 x H 21



RIE1055 SET OF 2
Ø 14 x H 24 / Ø 26 x H 47



RIE1066 DO I MT
Ø 26 x H 21



RIE1064 MT
Ø 41 x H 29



RIE1060 DO I MT
Ø 16.5 x H 15
RIE1061 DO I MT
Ø 21 x H 18
RIE1062 MT
Ø 28 x H 23.5



RIE1065 MT
Ø 19 x H 32



RIE1068 DO I MT SET OF 2
Ø 24 x H 12.5
Ø 36 x H 22



WAVE

D&M's special connection with nature really comes to the fore in this collection of round and square pots and plates made from willow reed. The original reed colour with its white wash patina fits in beautifully with the new spring colours and lends itself to all imaginable combinations. Flower arrangements, orchids and lanterns feel perfectly at home in this woven structure and are also perfect for use as a purely decorative feature.



RIE1017 SET OF 3
 Ø 18 x H 16
 Ø 29 x H 17.5
 Ø 45 x H 19



RIE1018 SET OF 2
 L 39 x W14 x H 14
 L 45 x W19 x H 14



RIE1009
 Ø 15 x H 13
RIE1010
 Ø 18.5 x H 16.5



RIE1023 INCL. GLASS
 Ø 11.5 x H 33



RIE1020 INCL. GLASS
 Ø 25 x H 25
RIE1022 INCL. GLASS
 Ø 30 x H 30



RIE1019 INCL. GLASS
 Ø 13 x H 11



RIE1011 SET OF 2
 Ø 16 x H 15
 Ø 22 x H 17
RIE1012 SET OF 2
 Ø 29 x H 28.5
 Ø 46 x H 33



RIE1013 SET OF 2
 # 15 x H 15.5
 # 21 x H 16
RIE1014 SET OF 2
 # 25.5 x H 29
 # 40 x H 32



RIE1016 SET OF 3
 # 15.5 x H 15
 # 25 x H 17
 # 40 x H 19



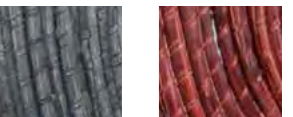
HELP

This timeless basket collection in woven bangkwang is the perfect interior design product. Functional and decorative, the items in this collection can be used as display baskets, linen baskets, clothes baskets and newspaper baskets. Alternatively, they can also be used as a base for lovely interior design creations using flowers or plants, or natural products and objects such as pebbles, sand and wood.



The grass is pushing up rapidly all around, even in the living room. This woven grass basket collection is living proof. The metal framework around which the grass has been woven combines a refined shape with the necessary strength. The soft brown hue gives it a unique, refreshing touch of nature. A simple, small orchid pot or a practical newspaper basket? Obvious, of course!

LOCK



LGI GREY RD RED



RIE975
Ø 18 x H 20



RIE976 SET OF 2
Ø 25 x H 9.5
Ø 32 x H 12



RIE977
15 x H 14



RIE1031 RD / Ø 18 x H 16
RIE1033 RD / Ø 28 x H 24
RIE1034 RD / Ø 36 x H 35



RIE1035 RD SET OF 2
L 22 x W 8 x H 8
L 25 x W 11 x H 10



RIE1036 RD SET OF 2
L 28 x W 11 x H 13
L 30 x W 13 x H 15



RIE983 SET OF 2
L 40 x W 27 x H 55
L 45 x W 33 x H 57



RIE979 SET OF 3
15 x H 14
24 x H 21
29 x H 23

RIE980 SET OF 3
25 x H 23
35 x H 29
42 x H 35



RIE1037 RD SET OF 3
15 x H 7
19 x H 9
23 x H 11



RIE1038 LGI | RD SET OF 2
Ø 15 x H 14
Ø 39 x H 15



RIE1039 RD
Ø 15
RIE1040 RD | LGI
Ø 25



D&M

depot

d&mdepot

**ACCESSORIES
TOEBEHOREN
ACCESSOIRES
ZUBEHÖRE
ACCESSORI**



PEACE

An atmospheric evening by peaceful candlelight that flickers safely behind glass set into a woven bamboo container. The Peace light lantern with its rustic patina of taupe and grey instantly creates a special atmosphere, as a decorative item beside the front door, on the patio or indoors, both in a traditional and modern home environment.



RIE1045
 Ø 24.5 x H 29
RIE1046
 Ø 29 x H 44



Genuine slate. A refined greyish-green colour. Lovely to use as a plate all by itself or adorned with cheese or cake, or with a sophisticated flower piece.

SLATE



NS004
 L 22 x W 22 x H 2
NS005
 L 33 x W 33 x H 2
NS006
 L 50 x W 50 x H 2



NS001
 # 20 x H 1.5
NS002
 # 30 x H 2
NS003
 # 50 x H 2



NS007
 L 50 x W 15 x H 2

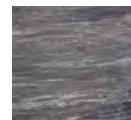


NS008
 Ø 30 x H 6

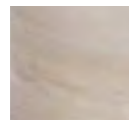


SISAL

Sisal is a collection of holders, made of glass entwined with gossamer-thin sisal and is available in white, aubergine and grey... This is a collection which will display creative decorative flower or plant arrangements to their best advantage, but also provides cosy mood lighting because of the mesmerising play of light and shade. The collection consists of three items: three holders for a tea light, orchid and a large orchid, and three vases.



GI GREY



WH WHITE



AL714 GI
Ø 6 x H 16
AL717 GI
Ø 18 x H 40



AL710 GI
Ø 5 x H 4.5
AL712 WH
Ø 14 x H 13.5

METALLIC

Decorative. Symmetrical. Industrial. Metallic combines all of this into a set of tealights and lanterns of strict lines, which are both ideal as purely decorative items and as beautifully packaged flower arrangements. They will look perfect in any wintry interior decor.



AL760
Ø 9 x H 7



AL761
Ø 17 x H 9
AL765
Ø 17 x H 9



AL763
Ø 32 x H 22



AL765
L 62 x W 22.5 x H 8



LAMP

Spring evenings draw in and the Lamp is lit. In no time at all these iron lanterns, available in two versions, one with horizontal black bands and the other in a woven structure with black coating, create a wonderful ambiance. Indoors or outdoors. They can be used as a vase, for tea lights or as a hurricane lamp. Whatever you use them for, they produce a stunning effect. Each lantern is available in two formats and features recycled glass.

A novelty in the collection - a series of classy lamps which look great both in a modern and traditional interior. Recycled plastic and bamboo have been interwoven to create a striking design. Available in 3 sizes. For a beautiful look both indoors and outdoors.

CLASSY



AL744
 Ø 17 x H 25
AL745
 Ø 21 x H 33



AL742
 Ø 19 x H 33



AL785 ZB
 Ø 31 x H 35
AL786 ZB
 Ø 43 x H 41
AL787 ZB
 Ø 52 x H 44.5



CLOTH

Recycled glass, covered in hand-woven and closely-stitched jute, painted in grey, taupe and orange. Cloth is the best living proof that jute – one of the most popular natural fibres used to make fabrics for more than one million years – is not just timeless, but also very exciting and inspiring. The collection includes a tea light, pots for mini plants, an orchid holder and two vases. Purity, minimalism and elegance are all united in this unique collection.



GI GREY OR ORANGE TP TAUPE



AL738 OR
Ø 7 x H 21
AL739 OR
Ø 13 x H 24



AL735 TP
Ø 8 x H 8.5
AL736 OR
Ø 10 x H 10.5
AL737 GI | OR
Ø 14 x H 14



RUFFLE

Soft as linen and light... Ruffle looks like simplicity personified but offers that extra little touch: elegant linen pleats in reddish orange, light and dark grey. Great fun lamps with a convenient carry-handle to insert and remove the tealight. The smallest Ruffle size is already heading for a career in the restaurant world. Atmospheric dining? Let there be Ruffle!



DGI DARK GREY DO DARK ORANGE LGI LIGHT GREY



AL780 DGI | DO | LGI
Ø 14.5 x H 23

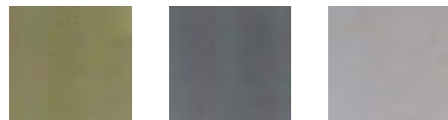


AL781 DGI | LGI
Ø 25 x H 43
AL782 DGI | LGI
Ø 40 x H 75



PURPOSE

A range of pots that does not only look great but has also been designed with a noble purpose: to limit the production of environmentally unfriendly plastic pots. The Purpose collection is made entirely of bamboo powder. The cylinder-shaped pots are 100% biodegradable and will be part of nature again completely after just one year. Moreover, the material promotes the growth process of plants and flowers because of better absorption of sunlight. And because more oxygen is also being absorbed, the roots will rot less quickly and the plants and flowers will stay beautiful much longer. Purpose pots come in white, grey and green.



GF GREEN GI GREY WH WHITE



H355 GF | GI | WH
Ø 10 x H 9
H356 GF | GI | WH
Ø 14 x H 12.5
H357 GF | GI | WH
Ø 17 x H 16



GLOBE

Paper clay is the basic material for this eco-collection of dishes and vases. The lightweight combination of recycled paper and clay, executed in the new winter colours and characterised by its natural structure, creates a unique ensemble. The material is perfect for flower arranging purposes, due to the simple round, square and oval shapes, which make it so easy to decorate. It is waterproof, as it should be, and suitable for all types of (orch-id) eas!



DGI GREY RD RED TP TAUPE WG W.GREEN



PAP020 DGI | RD | TP | WG/Ø 12.5 x H 9.5
PAP021 DGI | RD | TP | WG/Ø 14 x H 13



PAP026 DGI | RD
15 x H 13
PAP027 RD
18 x H 16
PAP028 DGI | RD | TP | WG
23 x H 21
PAP029 DGI | TP
30 x H 28
PAP030 DGI | TP
38 x H 35



PAP033 RD | TP
Ø 28 x H 23



PAP038 RD | TP / Ø 34 x H 14

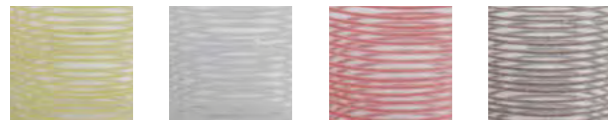


PAP039 DGI | RD | TP | WG
L 19 x W 7 x H 7



STRIPS

The sandblasted strips surrounding the glass give this holder a real festive character. Available in green, grey, red, white and brown.



GF GREEN GI GREY RD RED ZB BROWN



GL813 GF | GI | ZB
 Ø 5 x H 6.5
GL814 GF | GI | RD | ZB
 Ø 7 x H 7.5



A fresh and original eco-collection which brings recycled plastic to life in a most enthralling way. Fill the container with water and it turns itself into a vase. Hang it on the wall, fill it with some greenery or a flower arrangement, and it will brighten up its whole surroundings. These are great fun to hang together in a group on an outside wall; white, black, grey and lime green all happily mixed together. However, they will look just as trendy in student accommodation and even smarten up the toilet room. Survival will survive... anywhere and everywhere!

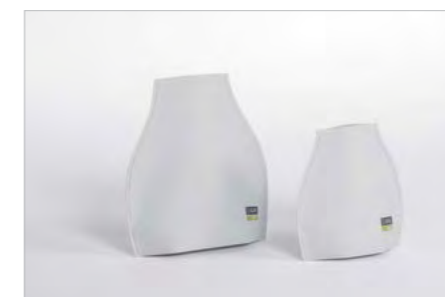
SURVIVAL



GF GREEN LGI LIGHTGREY WH WHITE ZW BLACK



PL340 GF | LGI | WH | ZW
 # 13 x H 13
PL341 GF | WH | ZW
 # 17 x H 17



PL343 GF | LGI | WH | ZW
 Ø 13,5 x H 13.5
PL344 GF | LGI | WH | ZW
 Ø 18 x H 17.5



PL345 GF | LGI | WH | ZW
 L 13 x W 4 x H 13
PL346 GF | LGI | WH | ZW
 L 16 x W 5 x H 16
PL347 GF | LGI | WH | ZW
 L 21 x W 5 x H 26



D&M

depot

d&mdepot

**RUBBER
RUBBER
CAOUTCHOUC
GUMMI
GOMMA**



STRAIGHT

This has been a unique and original product for many years now. Flexible rubber, waterproof, for indoors and outdoors, or even in your bathroom or kitchen. The most practical product we have ever had in our range.



PL093 BE | CH / # 13 x H 12.5
 PL094 CH | FU | GF / # 15 x H 14.5
 PL095 FU | GF / # 17 x H 16.5



PL098 CH | GF / L 16 x W 8 x H 10
 PL100 GF / L 16 x W 8 x H 20



PL080 BE | CH | GF / Ø 13 x H 12.5
 PL081 FU | GF | ZW / Ø 15 x H 14.5
 PL082 BE | FU | GF / Ø 17 x H 16.5



PL083 BE | CH | GF | ZW / Ø 11.5 x H 11
 PL084 BE / Ø 13.5 x H 13
 PL085 BE | CH | GF / Ø 15 x H 15



PL092 BE | CH | FU | GF | ZW / # 20 x H 7



D&M

depot

d&mdepot

**LARGER
GROTER
PLUS GRAND
GROSSER
PIÙ GRANDE**



What makes this recycled plastic pot collection so unique and so very different? Its clever, sustainable composition or its attractive design? Both really. Surprise is a collection made of wood, stone and recycled plastic powder. Surprisingly strong and solid because it offers a good 10 to 20 years of decorative pleasure! Also amazingly light which makes it very easy to move. Suitable for indoor and outdoor spaces, available in different colours.

SURPRISE



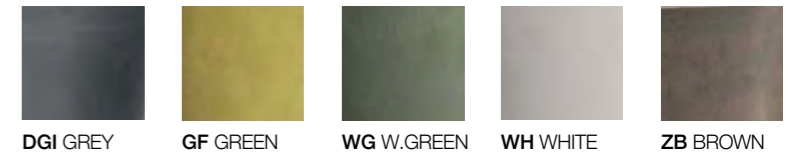
PL325 DGI | GF | WG | WH
 Ø 33 x H 16.5
PL326 DGI | GF | WG | WH
 Ø 40 x H 19.5



PL327 DGI | WH
 Ø 46 x H 40.5
PL328 DGI | WH
 Ø 55 x H 50
PL329 DGI | WH
 Ø 65 x H 56



PL333 DGI | GF | WG | WH
 L 28 x H 12
PL334 DGI | WH
 L 47 x H 16
PL335 DGI | WH
 L 55 x H 22



PL280 DGI | GF | WG | WH
 Ø 14 x H 13
PL281 DGI | GF | WG | WH
 Ø 19 x H 17
PL282 DGI | GF | WG | WH
 Ø 31 x H 29
PL283 DGI | GF | WG | WH | ZB
 Ø 40 x H 38
PL336 DGI | GF | WG | WH
 Ø 27 x H 51



PL285 DGI | GF | WG | WH | ZB
 # 30 x H 15
PL286 DGI | GF | WG | WH | ZB
 # 40 x H 18



PL284 DGI | GF | WG | WH | ZB
 # 30 x H 28



PL337 DGI | WH
 Ø 49 x H 70



PL338 DGI | WH
 # 49 x H 71



PL287 DGI | WH
 Ø 25 x H 46
PL288 DGI | WH
 Ø 20 x H 27
PL289 DGI | WH
 Ø 25 x H 32
PL330 DGI
 Ø 20 x H 20
PL331 DGI
 Ø 16 x H 24
PL332 DGI
 Ø 16 x H 31



GRIP



DGI GREY TP TAUPE



B056 DGI: L 40 x W 18 x H 14
B057 DGI | TP: L 60 x W 18 x H 14



B052 DGI | TP SET OF 2
28 x H 28 - # 40 x H 40



B045 DGI | TP: Ø 25 x H 23
B046 DGI | TP: Ø 35 x H 30
B047 DGI | TP: Ø 41 x H 35
B048 DGI | TP: Ø 52 x H 42



B049 DGI | TP: Ø 35 x H 15
B050 DGI | TP: Ø 52 x H 21



B051 DGI | TP: Ø 37 x H 40



B055 DGI | TP: L 76 x W 34 x H 96



B053 DGI | TP | SET OF 3
22 x H 20 - # 28 x H 26 - # 35 x H 32
B054 DGI | TP | SET OF 3
35 x H 32 - # 45 x H 42 - # 55 x H 51

ROUGH



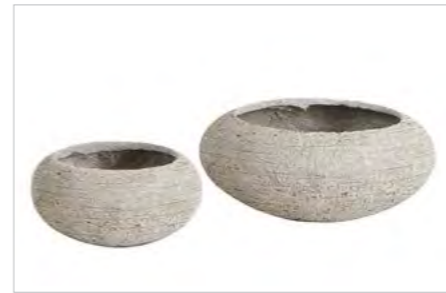
GI GREY TP TAUPE



B105 GI | TP | SET OF 3
Ø 26 x H 23.5 - Ø 31 x H 27 - Ø 37 x H 31



B106 GI | TP
Ø 32 x H 50



B107 GI | TP SET OF 2
Ø 23 x H 11 - Ø 37 x H 18
B108 GI | TP BIG SIZE
Ø 55 x H 24



B104 GI | TP
37 x H 50



B100 GI | TP: L 24 x W 12 x H 8
B101 GI | TP: L 40 x W 12 x H 8
B109 GI | TP: L 40 x W 18 x H 14
B110 GI | TP: L 60 x W 18 x H 14



B102 GI | TP | SET OF 3
25 x H 25 - # 31 x H 31 - # 37 x H 37



B103 GI | TP | SET OF 3
43 x H 43 - # 48 x H 48

BIG RECTANGULAR POTS

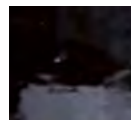
B111 GI | TP: L 75 x W 27 x H 40
B112 GI | TP: L 75 x W 27 x H 70

These images can be different from the final product
Not all pictures are available



SOLID

Solid is also available in two shapes, that have a natural watering system. Water is poured in the outer pot. Through the side of the inner pot, the plant can get his water when needed. With this system, you can provide your plant with water for longer periods.



ZW BLACK



WH WHITE



AAR3945 WH | ZW
13 x H 10
AAR3946 WH | ZW
18 x H 12



AAR3940 WH | ZW
27 x H 27
AAR3941 WH | ZW
37 x H 37

SCRAPE

A comprehensive collection of pots for all seasons. The combination of concrete and sand adds an extra dimension to the classic design and creates unusual structure. The rough interior and the scratch-covered exterior reflect a natural, aged elegance. Beautiful to be hold and practical to use. Indoors and outdoors, because all the elements are watertight. Pots with a different diameter, two cone-shaped dishes, one oval flower and plant arrangement dish, a taller oval vase and one wide-bottomed dish that narrows towards the top complete the assortment.



B073 Gl
L 22 x W 11 x H 7.5



B076 Gl
Ø 33 x H 24



B077 Gl
Ø 52 x H 19

B066 Gl
Ø 13 x H 12
B067 Gl
Ø 15 x H 14.5
B068 Gl
Ø 18 x H 16.5

B071 Gl
Ø 33 x H 31





D&M

table

d&mtable

EN

NOT JUST THE TASTE MATTERS: D&M TABLE

At D&M depot we love new, inspiring ideas. That's why we were attracted to the new collection of dinnerware that we recently started marketing under the name D&M table. The tableware is complete with plates, bowls, platters, storage pots and a coffee service. The style is modern and minimalist whilst retaining a sense of cheer.

NL

HET OOG WIL OOK WAT: D&M TABLE

Bij D&M depot houden we van nieuwe, inspirerende ideeën. We waren dan ook onmiddellijk gewonnen voor de nieuwe serviescollectie die we onlangs onder de naam D&M table op de markt brachten. Het is een volledig servies, met platte borden, kommetjes, schotels, bewaarpotjes en koffiekopjes- en schoteltjes. Het heeft een moderne en sobere, maar toch vrolijke stijl.

FR

LE GOÛT N'EST PAS TOUT: D&M TABLE

Chez D&M, nous adorons les nouvelles idées inspirées. C'est pour cela que nous souhaitons une nouvelle collection de vaisselle, que nous avons récemment lancée sous l'appellation D&M table. Le service complet inclut assiettes, bols, plats, pots et même un service à café. Le style est moderne et sobre, avec une touche de gaieté.

IT

ANCHE L'OCCHIO VUOLE LA SUA PARTE: D&M TABLE

In D&M amiamo le nuove idee cui ispirarsi. Ecco perché siamo affascinati dalla nuova collezione di articoli per la tavola che abbiamo iniziato a commercializzare di recente con il nome D&M table. Il servizio da tavola è completo e comprende piatti piani, ciotole, piatti da portata, vasetti per conserve e servizio da caffè. Lo stile è sobrio e moderno, senza rinunciare ad un tocco di vivacità.

DE

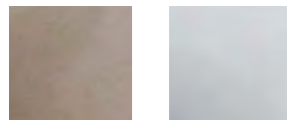
NICHT NUR GESCHMACK SPIELT EINE ROLLE: D&M TABLE

Bei D&M Depot lieben wir neue, inspirierende Ideen. Deswegen sind wir so begeistert von der neuen Tafelgeschirr-Kollektion, die wir seit kurzem unter dem Namen D&M Table anbieten. Es handelt sich um ein komplettes Service mit Tellern, Schüsseln, Servierplatten, Vorratsbehältern und einem Kaffeeservice. Der Stil ist schlicht und modern, ohne deswegen trist zu wirken.



DOMINIK

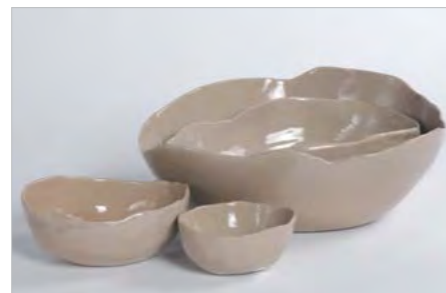
D&M Depot proudly presents: the new collection of the internationally renowned sculptress Dominique Mosseray. A design artist who constantly moves between sandstone and porcelain, yin and yang and who subsequently manages to connect these polar opposites into very harmonious creations. Dominique Mosseray designs unique decorative and functional items which are used all over the world. She now also works exclusively with D&M Depot. Dominique's honest artistry and the functional-creative vision of the D&M Depot team were an instant match. The result is an unrivalled porcelain collection, the ultimate expression of her passion for exceptional shapes, her artistic feel and her preference for 'pièces uniques'. A porcelain dinner set that stands out by its bright white tone, exquisite design and organic mix of design and user-friendliness. D&M Depot is proud to be able to present the work of this top artist to you.



NA NATURAL WH WHITE



AAR3521 NA
Ø 24 x H 2
AAR3522 NA
Ø 29 x H 2
AAR3523 NA
Ø 33 x H 2



AAR3524 NA
Ø 10 x H 5.5
AAR3525 NA
Ø 16 x H 6
AAR3526 NA
Ø 21 x H 9
AAR3527 NA
Ø 30 x H 10



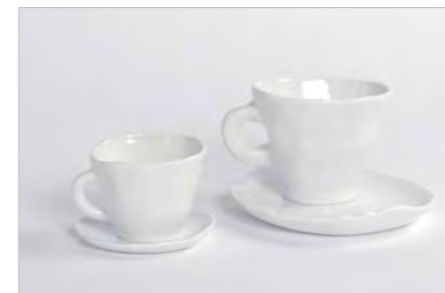
AAR3524 WH
Ø 10 x H 5.5
AAR3525 WH
Ø 16 x H 6
AAR3526 WH
Ø 21 x H 9
AAR3527 WH
Ø 30 x H 10



AAR3515 NA
Ø 8 x H 6.5
AAR3516 NA
Ø 9.5 x H 1
AAR3517 NA
Ø 10 x H 8.5
AAR3518 NA
Ø 16 x H 1



AAR3519 NA
Ø 16 x H 5.5
AAR3520 NA
Ø 20 x H 4.5



AAR3515 WH
Ø 8 x H 6.5
AAR3516 WH
Ø 9.5 x H 1
AAR3517 WH
Ø 10 x H 8.5
AAR3518 WH
Ø 16 x H 1



AAR3519 WH
Ø 16 x H 5.5
AAR3520 WH
Ø 20 x H 4.5

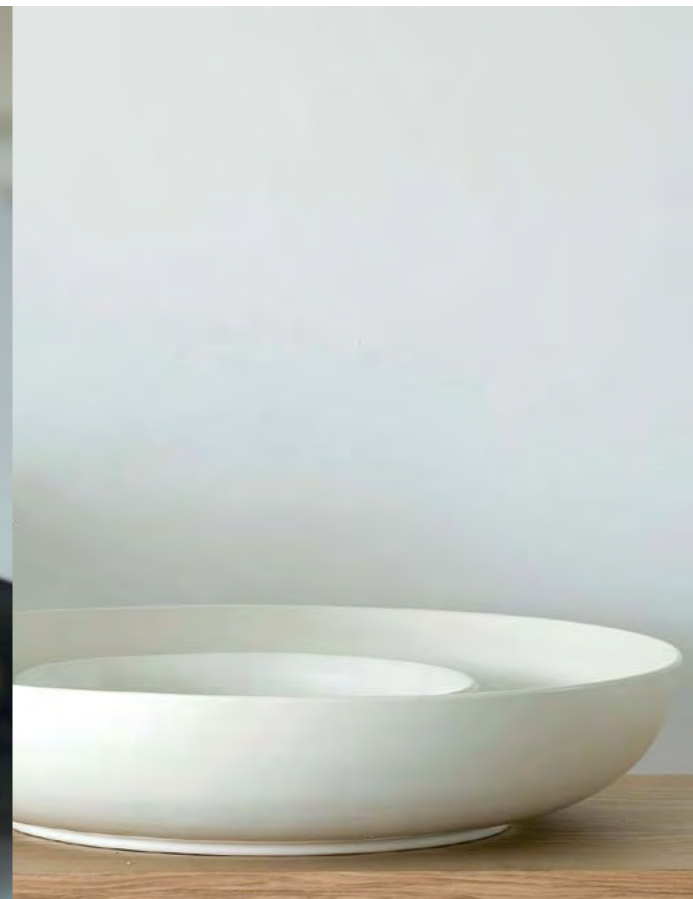


AAR3521 WH
Ø 24 x H 2
AAR3522 WH
Ø 29 x H 2
AAR3523 WH
Ø 33 x H 2



TASTE

Beautiful black-brown porcelain. Bowls, plates, ideal vases and goblets to bring total harmony to your table. Oven-, microwave oven- & dishwashersafe.



A salad or an attractive flower arrangement. Anything goes with the Sense collection of bowls and plates. A versatile collection with a beautiful waterproof matt glaze.

SENSE

A complete tableware range. Round dishes as well as square and rectangular plates. The fine hand-drawn lines add a subtle detail to the collection. A refined meal or a classy flower arrangement. There are so many possibilities with this collection!

ICE



AAR1910 ZB
 Ø 19 x H 1.5
AAR1911 ZB
 Ø 26 x H 1.5
AAR1912 ZB
 Ø 33 x H 1.5



AAR1913 ZB
 Ø 21 x H 6



AAR1905 ZB
 Ø 23 x H 12.5



AAR1903 ZB
 L 14.5 x W 11 x H 5
AAR1904 ZB
 L 20 x W 16 x H 9.5



AAR1900 ZB
 Ø 7.5 x H 7
AAR1901 ZB
 Ø 8 x H 12



AAR2258 WH
 Ø 56 x H 12



AAR2255 WH
 Ø 30 x H 15



AAR3002
 Ø 19 x H 1.5
AAR3003
 Ø 26 x H 2.5



AAR3007
 # 18 x H 2



A.ME STORAGE

An elegant form of storage for your kitchen. The same products are also highly suitable for flower arrangements or orchids.

Tea-time will be most enjoyable with these elegant coffee and tea accessories. All the rectangular range are also suitable for snacks and starters.

A.ME COFFEE AND TEA



AAR3100
Ø 7 x H 3.5
AAR3101
Ø 12 x H 5
AAR3102
Ø 24 x H 4.5



AAR3112
Ø 16 x H 14
AAR3113
Ø 18 x H 15



AAR3115
Ø 7 x H 17



AAR3117
Ø 18 x H 7.5
AAR3118
Ø 25 x H 8



AAR3124
L 19 x W 9 x H 1.8
AAR3125
L 32 x W 11.5 x H 1.8
AAR3126
L 35 x W 15 x H 1.8



AAR3127
L 6.5 x W 4.5 x H 5
AAR3128 (SUGAR CAN)
L 8.5 x W 5.5 x H 6
AAR3129 (MILK CAN)
L 10 x W 5.5 x H 6
AAR3130 (LARGE MILK CAN)
L 10.5 x W 6 x H 13
AAR3144 (WATER CAN)
L 13.5 x W 8 x H 16.5



AAR3132 Ø 7 x H 1
AAR3133 Ø 6 x H 6.5
AAR3134 Ø 9 x H 1
AAR3135 Ø 8.5 x H 9



A.ME RECTANGULAR

Anja Meeusen and her collection for D&M depot: we are proud to present the traditional workmanship of this Belgian ceramics specialist. Anja Meeusen is a leading supplier of exclusive dinnerware for superior restaurants. The dinnerware is made of high quality clay and baked at more than 1260°C. The result is strong earthenware that is ideal for everyday use. The dinnerware is also dishwasher safe and can be used in the oven or microwave. The different products all radiate character and pure handicraft. The rectangular range is a good alternative to the round range but also excellent for snacks and starters. The oil & vinegar bottles work extremely well as a single flower vase and in a group.

The series is designed to be flexible. You can place a dinner plate on top of a soup bowl, which offers a highly distinctive way of serving and keeping ingredients warm.

A.ME ROUND



AAR3124
L 19 x W 9 x H 1.8
AAR3125
L 32 x W 11.5 x H 1.8
AAR3126
L 35 x W 15 x H 1.8



AAR3119
L 10,5 x W 7 x H 4,5
AAR3120
L 14 x W 10,5 x H 5,5
AAR3121
L 21,5 x W 13 x H 7
AAR3122
L 24,5 x W 17,5 x H 8,5
AAR3123
L 34 x W 24 x H 10



AAR3103
L 7 x W 5 x H 13
(CORK INCLUDED)
AAR3104
L 11 x W 8 x H 21
(CORK AND DISPENSER INCLUDED)



AAR3136 Ø 20,5 x H 1,5
AAR3137 Ø 20 x H 5,5
AAR3138 Ø 26,5 x H 2
AAR3139 Ø 26 x H 9,5
AAR3141 Ø 32 x H 2
AAR3142 Ø 32 x H 9



AAR3145 Ø 13 x H 10



AAR3131 L 12 x W 10 x H 1



AAR3132 Ø 7 x H 1
AAR3133 Ø 6 x H 6,5
AAR3134 Ø 9 x H 1
AAR3135 Ø 8,5 x H 9



AAR3143 Ø 19 x H 10,5



SIMPLICITY

A porcelain dinner set made out of China Bone, with mat exterior, glazed interior and uneven edge finish. That's all you need to give your family dinner table a fabulous festive look, down to the very last detail. Plates, bowls, cups and tea lights create a fresh, trendy feel, time after time. What's more, this dinner set is dishwasher-, oven- and microwave oven-safe.

Chopping boards, spoons and eggcup in this natural colour. These products are magnificent when combined with a wide range of the D&M table collections. It is inadvisable to put these products in the dishwasher.

A.ME BAMBOO



AAR3335 WH
 Ø 5 x H 3.5
AAR3343 WH
 Ø 13 x H 8
AAR3344 WH
 Ø 23 x H 14



AAR3336 WH
 Ø 6.5 x H 7.5
AAR3337 WH
 Ø 8 x H 10.5
AAR3338 WH
 Ø 13 x H 14



AAR3342 WH
 Ø 20.5 x H 6
AAR3339 WH
 Ø 20
AAR3340 WH
 Ø 24
AAR3341 WH
 Ø 31



H320
 L 19 x W 10 x H 1.5
H321
 L 50 x W 30 x H 1.5



H322
 Ø 5 x H 5



H323
 L 13 x W 2.5 x H 1
H324
 L 20 x W 4 x H 1
H325
 L 27 x W 4.5 x H 1

INDEX

Africa	Fine ceramics	57	Lock	Wicker	111
A.ME Bamboo	Table	149	Lotus	Fine ceramics	55
A.ME Coffee and tea	Table	145	Luminosity	Glass	96
A.ME Flower	Fine ceramics	35	Meadow	Wicker	102-103
A.ME Rectangular	Table	146	Meduse	Fine ceramics	54
A.ME Round	Table	147	Metallic	Accessories	117
A.ME Storage	Table	144	MicMac	Fine ceramics	21
Bandana	Fine ceramics	29	Milk	Glass	97
Basic mat	Basic	64-65	Moon	Glass	97
Basic shiny	Basic	62-63	Moony	Presents	73
Bâtons	Fine ceramics	26	Move	Glass	93
Biscuit	Fine ceramics	28	Nature	Fine ceramics	37
Blond	Wood	89	Necklace	Presents	73
Blow	Glass	98	Nest	Presents	71
Briq	Garden corner	79	Noelle	Fine ceramics	34
Buddy	Presents	72	Orb	Fine ceramics	43
Calic	Fine ceramics	20	Oxygen	Glass	94
Classic	Glass	95	Peace	Accessories	114
Classy	Accessories	119	Plantago	Fine ceramics	46
Chap	Fine ceramics	22-23	Pottina & pottone	Garden corner	83
Closer	Fine ceramics	38	Purpose	Accessories	122
Cloth	Accessories	120	Raw	Fine ceramics	41
Curl	Fine ceramics	33	Rough	Larger	135
Dance	Fine ceramics	45	Ruffle	Accessories	121
Diabolo	Fine ceramics	39	Scrape	Larger	137
Dominik	Table	140-141	Sense	Table	143
Droplet	Presents	70	Shaped	Glass	99
Duplex	Fine ceramics	51	Sheet	Fine ceramics	52
East	Fine ceramics	49	Simplicity	Table	148
Envelope	Fine ceramics	32	Sisal	Accessories	116
Fickle	Fine ceramics	27	Slate	Accessories	115
Field	Fine ceramics	36	Snow	Fine ceramics	30
Flock	Wicker	106	Solid	Larger	136
Flounce	Fine ceramics	50	Straight	Rubber	128-129
Freeze	Fine ceramics	30	Strap	Wicker	107
Fumble	Garden corner	44-80	Strips	Accessories	124
Fusion	Fine ceramics	48	Surprise	Larger	132-133
Globe	Accessories	123	Survival	Accessories	125
Grid	Fine ceramics	53	Taste	Table	142
Grip	Larger	134	Tangle	Fine ceramics	56
Hail	Fine ceramics	30	Triple feuille	Fine ceramics	26
Help	Wicker	110	Tulip	Fine ceramics	54
Hive	Garden corner	78	Twig	Wood	87
Hook	Wicker	105	Twine	Wood	88
Ice	Table	143	Twisted	Fine ceramics	38
Jacket	Fine ceramics	47	Urban farm	Garden corner	81
Jar	Fine ceramics	52	Vitro	Glass	92
Kangaroo	Fine ceramics	26	Volcano	Fine ceramics	42
Karoo	Graden corner	82	Wave	Wicker	109
Lamp	Accessories	118	Whale	Fine ceramics	31
Lean	Wicker	104	Whimsical	Fine ceramics	40
			Wild	Wood	86

belgian design for you

d&mcontact

D&M DEPOT NV/SA - Industrieweg 23 - Iz.west z6 - 2630 - Aartselaar - Belgium
T +32 (0)3 888 42 00 - F +32 (0)3 844 84 85 - commercial@dmdepot.be

www.dmdepot.be



printed on FSC paper november 2013

