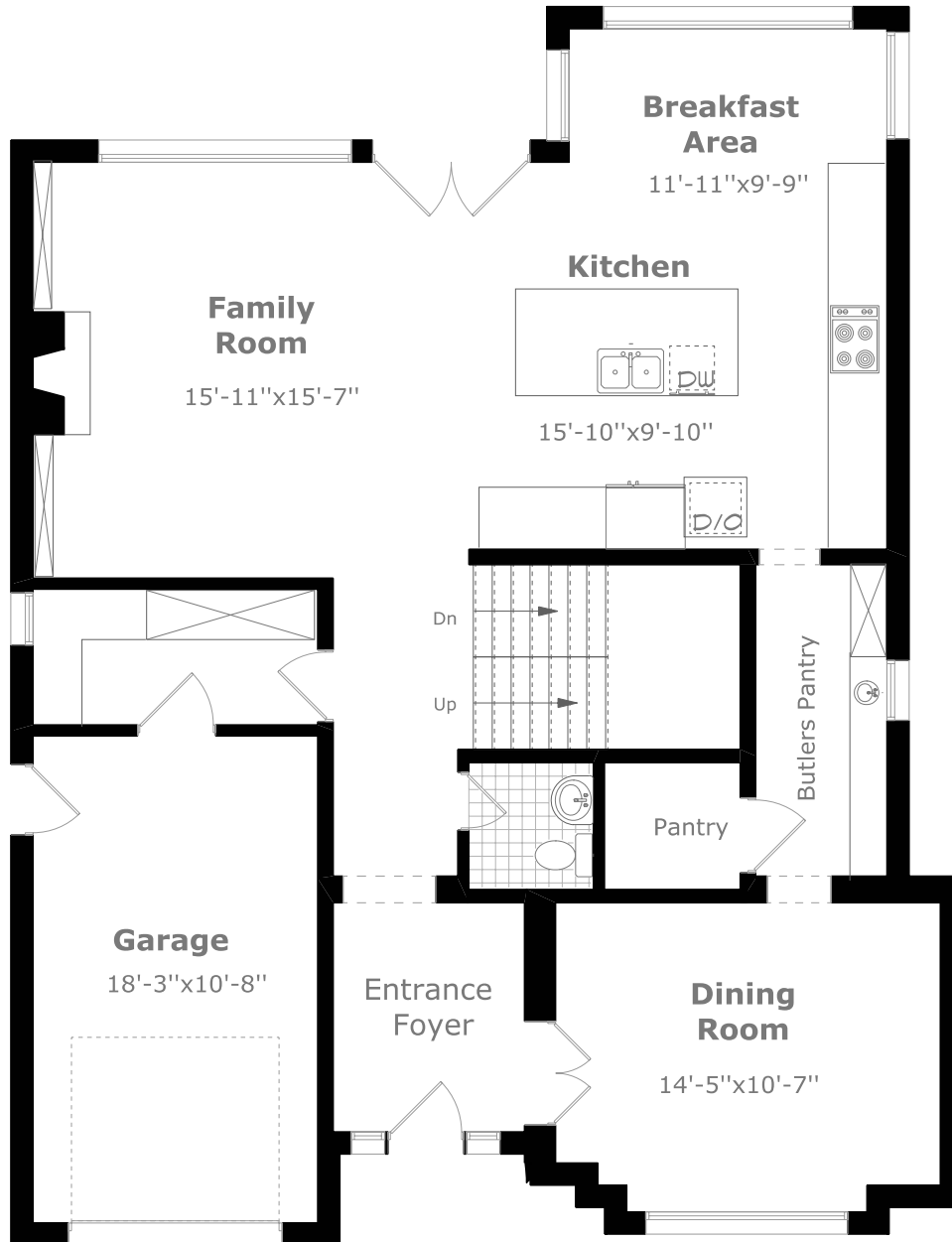
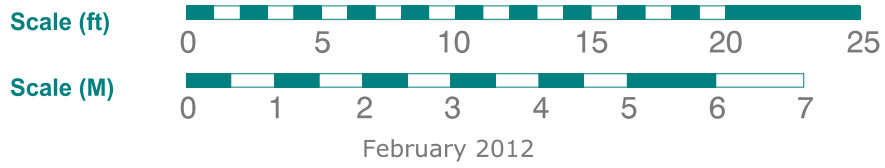


428 Sheddon Avenue



Main Floor Plan

1,221.2 sq. ft.+

222.3 sq. ft. (Garage)



Measurements may not be 100% accurate. Floor Plans provided for illustrative purposes only. Room sizes not used to calculate area.

428 Sheddon Avenue

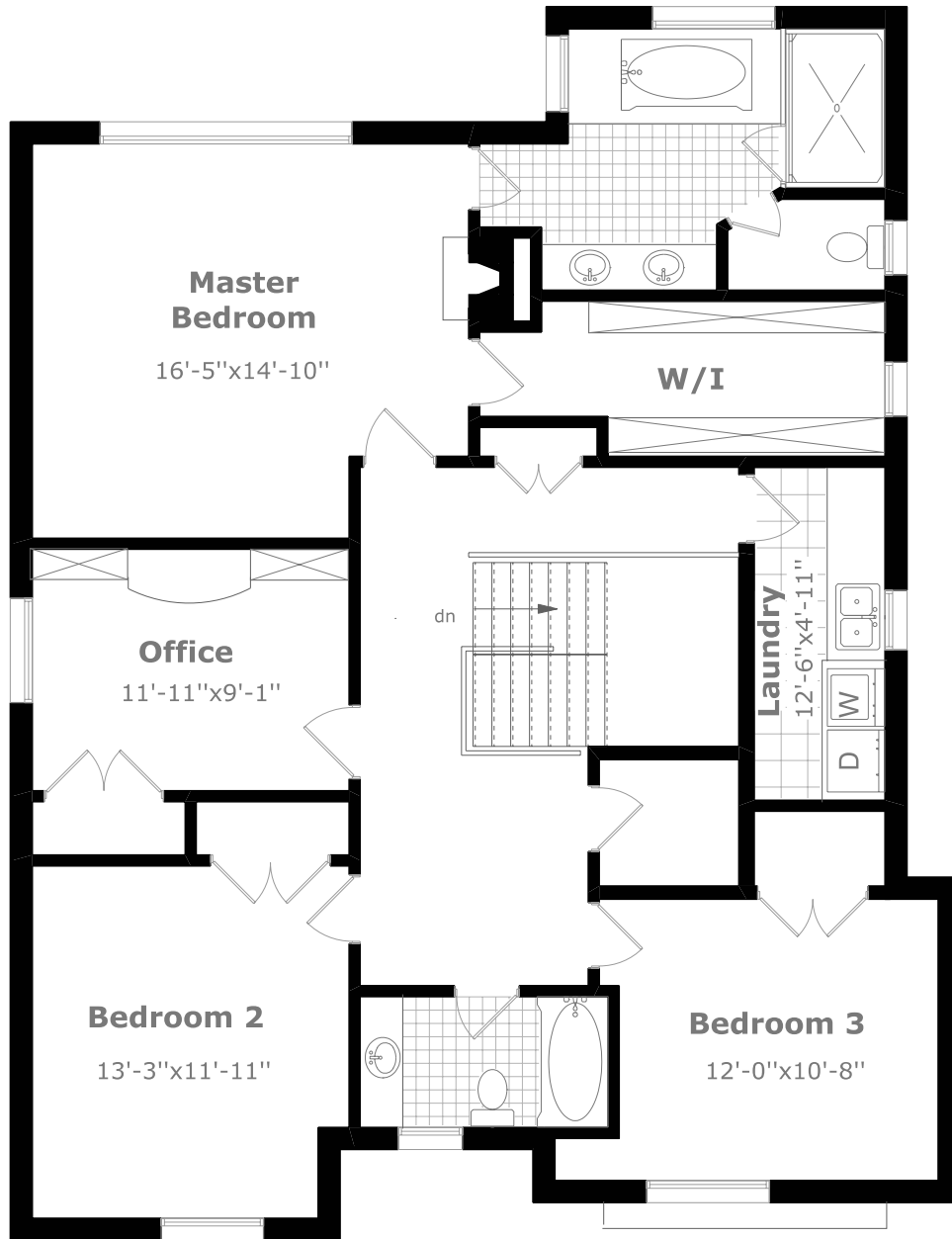
Scale (ft)



Scale (M)



February 2012



2nd Floor Plan

1,459.0 sq. ft.



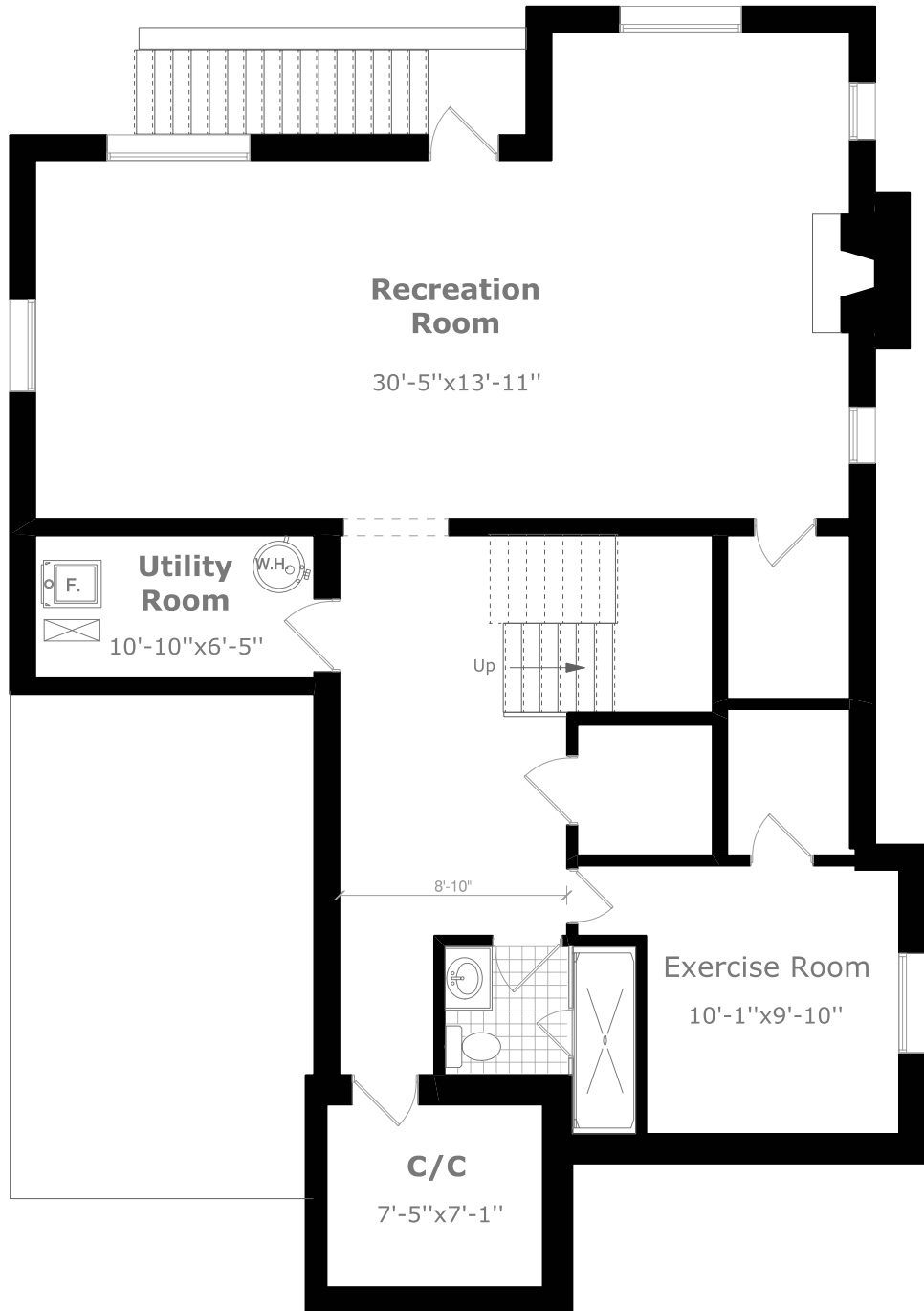
Measurements may not be 100% accurate. Floor Plans provided for illustrative purposes only. Room sizes not used to calculate area.

428 Sheddon Avenue

Scale (ft) 0 5 10 15 20 25

Scale (M) 0 1 2 3 4 5 6 7

February 2012



Basement Plan

1,282.8 sq. ft.



Measurements may not be 100% accurate. Floor Plans provided for illustrative purposes only. Room sizes not used to calculate area.