



Admonter 
NATURE'S FAVOURITE DESIGNER

Admonter.
Hotels like home.

HOTEL INDUSTRY

ADMONTER - ALL FROM A SINGLE SOURCE THE COMPLETE RANGE OF WOOD PRODUCTS FOR INTERIOR USE.

FLOOR^S

Regardless of how you want to live, what ambience you are planning, cosy or with strong design features, natural wood always adds atmosphere to the floor. And the reverse also applies.

STAIR^S

Admonter offers solutions for staircases to match any floor product. Whichever option you choose from the floors range, stairs will take you to the next level.

ELEMENT^S

Architects and furniture makers clearly find our natural wood panels inspiring. By bringing rooms to life, our natural wood panels have earned a name for themselves.

DOOR^S

Enter special living spaces through Admonter natural wood doors. The doors come in the FLOORs and ELEMENTs design.

ACOUSTIC^S

Admonter acoustic elements open up new possibilities for acoustic and visual interior design. These elements are ideal for new construction, as well as renovation.

ACOUSTIC^S

DOOR^S

ELEMENT^S

STAIR^S

Admonter is a company that offers the complete range of wood products for interior use. Everything from sustainable wood, refined in exclusive design and manufactured according to individual wishes, we find tailor-made solutions for your project. From the floor, over the walls, ceilings, stairs, acoustic elements to high-quality doors, everything is possible. Perfectly coordinated and always unmistakable and unique.

FLOOR^S



ELEMENTS

RECLAIMED WOOD ALDER GREY

Hotel Rita
Austria





ADMONTER IS AT HOME
IN MANY PROJECTS.
ALWAYS AT THE
HIGHEST LEVEL.



ELEMENT^S FLOOR^S

OAK BRUSHED

Hotel Asam
Germany





ELEMENTS

RECLAIMED WOOD HACKED

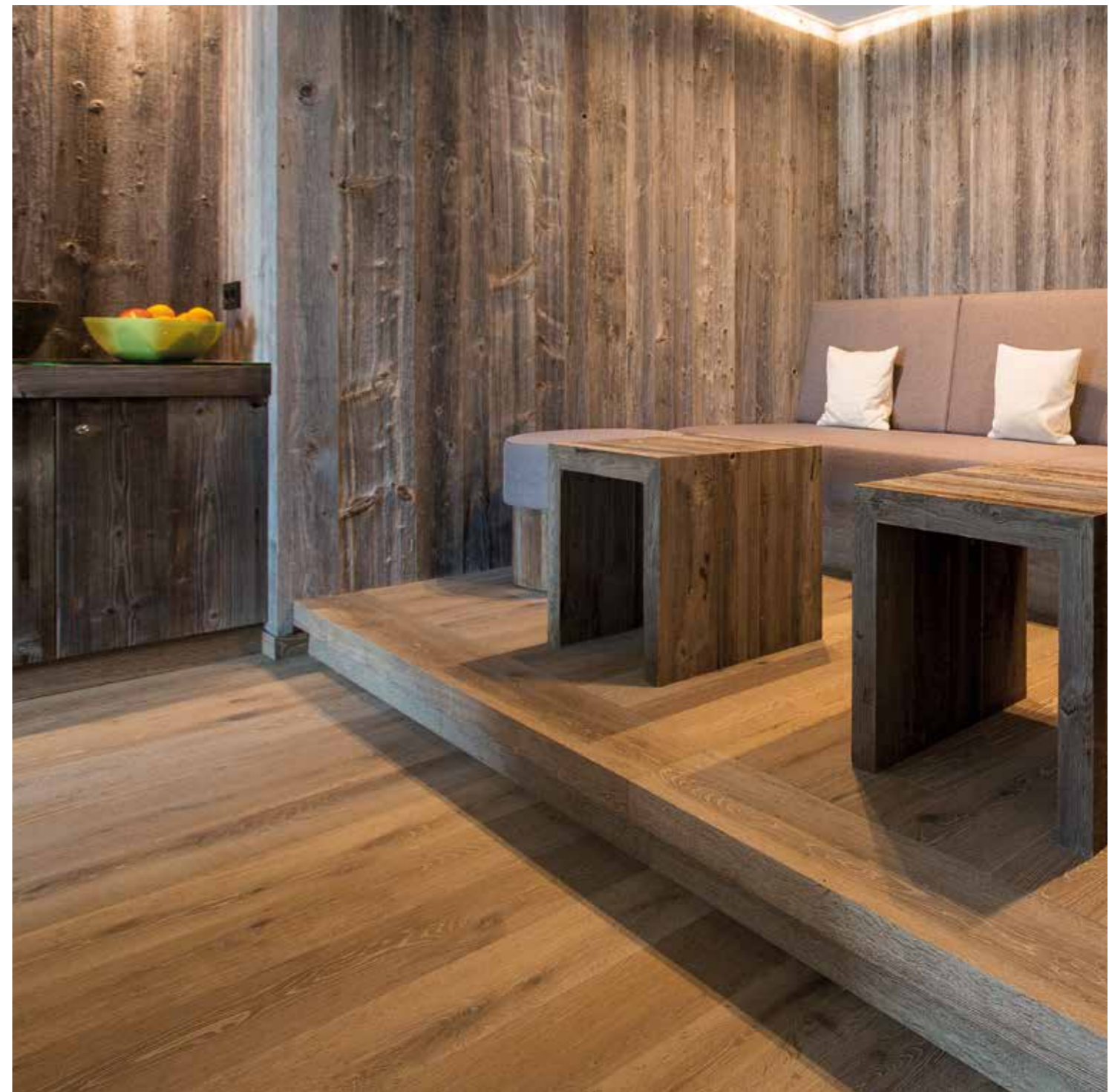
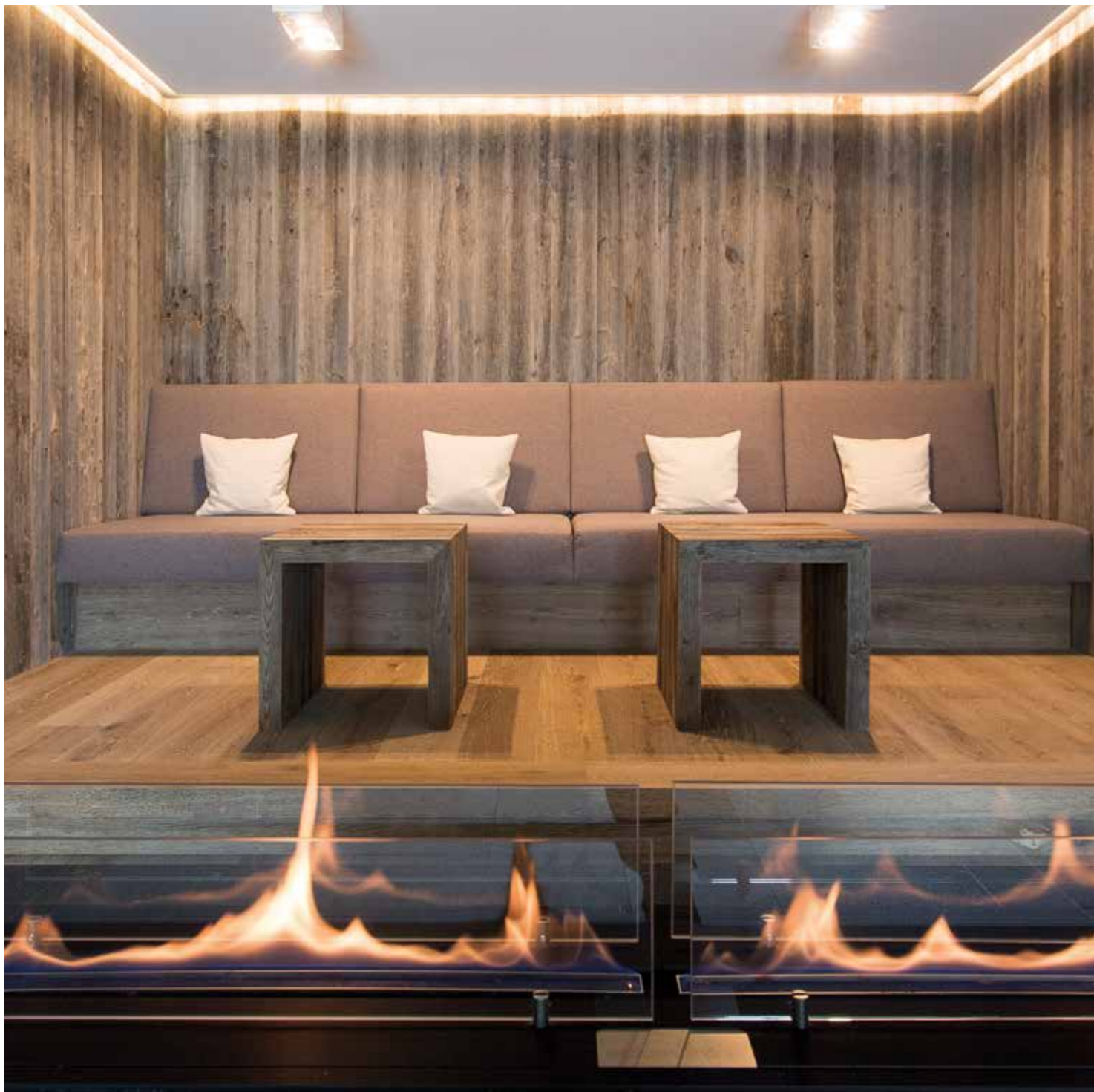
Hotel Falkensteiner
Schladming, Austria

FLOOR S

OAK RUSTIC

Hotel Falkensteiner
Schladming, Austria





WHETHER TRADITIONAL
AND ALPINE, DIGNIFIED
AND VENERABLE OR
MODERN AND STRAIGHT.
FEEL COMFORTABLE
WITH ADMONTER.



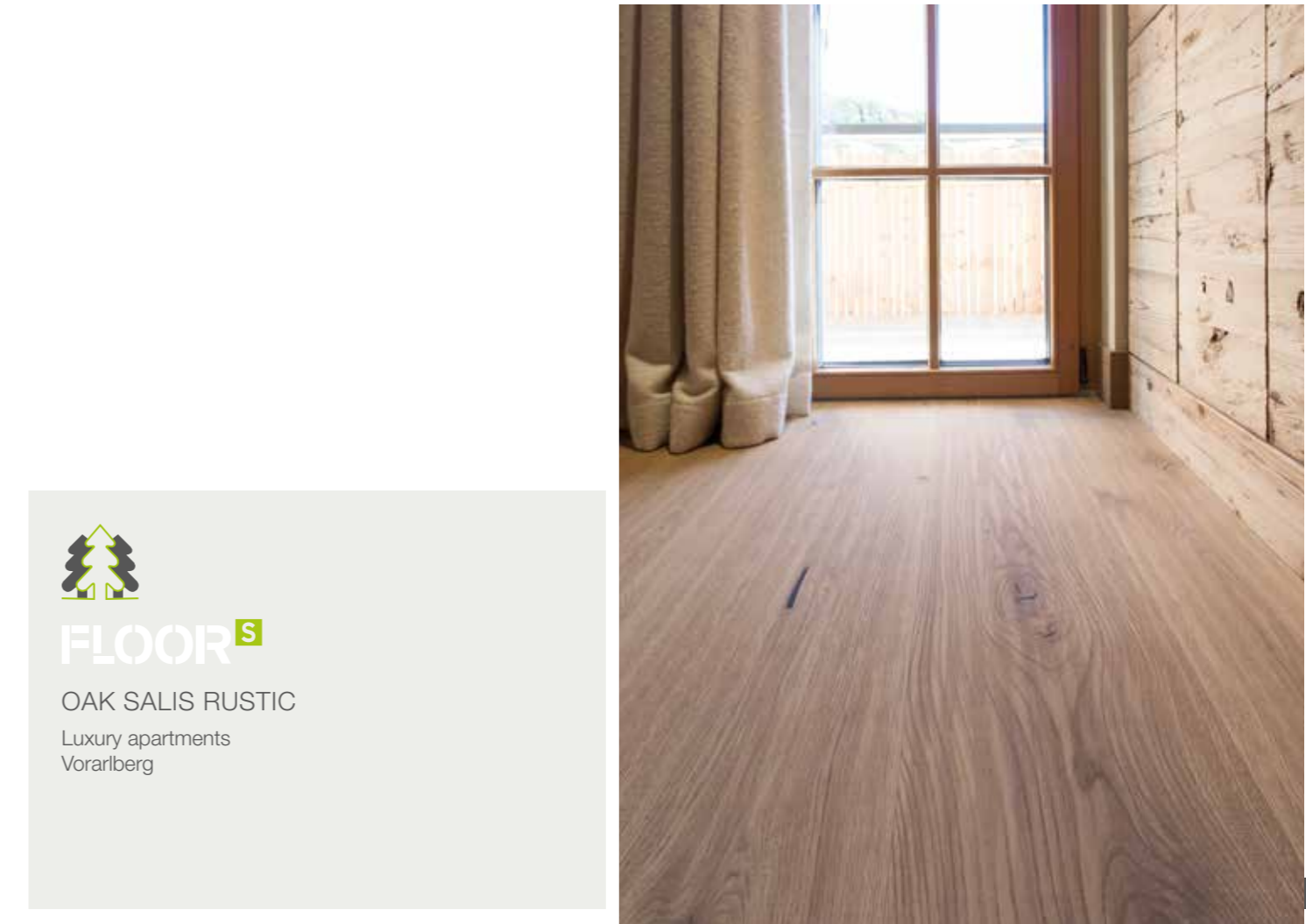
FLOOR **S**

OAK ENAS, Hotel Graseck, Germany

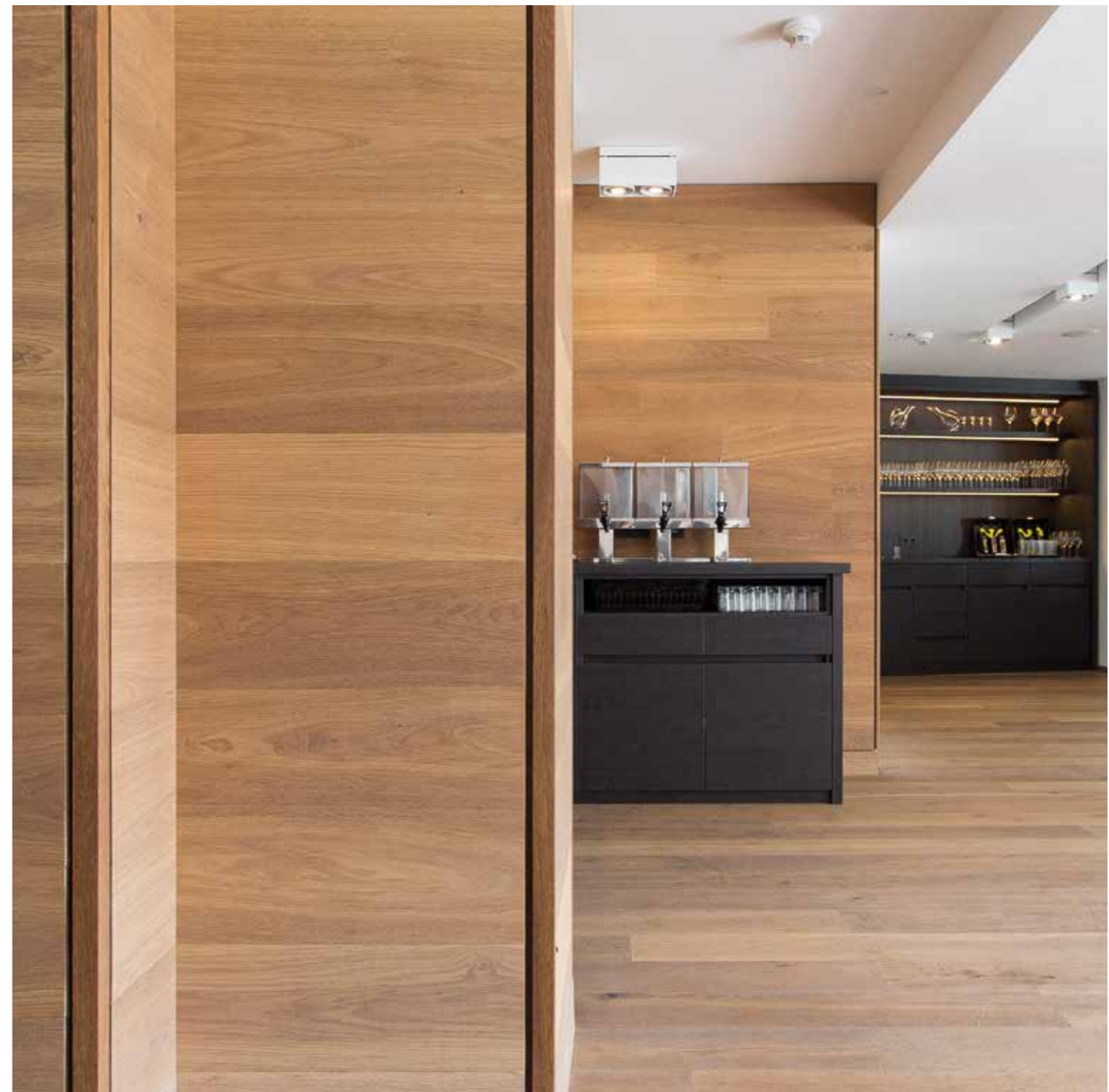
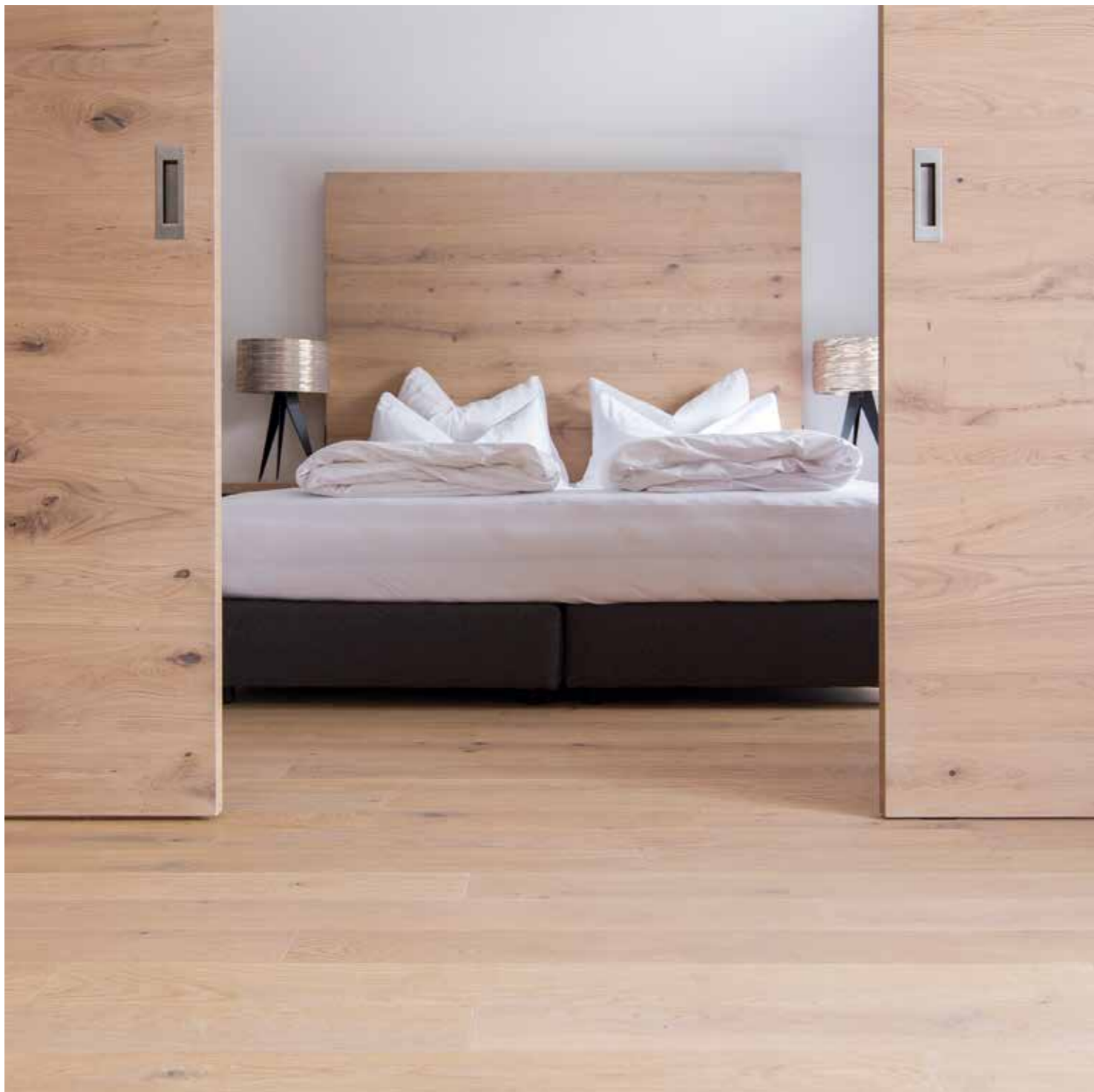
ELEMENT **S**

RECLAIMED WOOD SUNBAKED GREY

Hotel Graseck
Germany



FLOOR^S
OAK SALIS RUSTIC
Luxury apartments
Vorarlberg



WOOD MAKES YOU
FEEL COMFORTABLE.
IT DOES NOT NEED
A LOT TO **CREATE**
LIVING QUALITY.



ELEMENT **S**

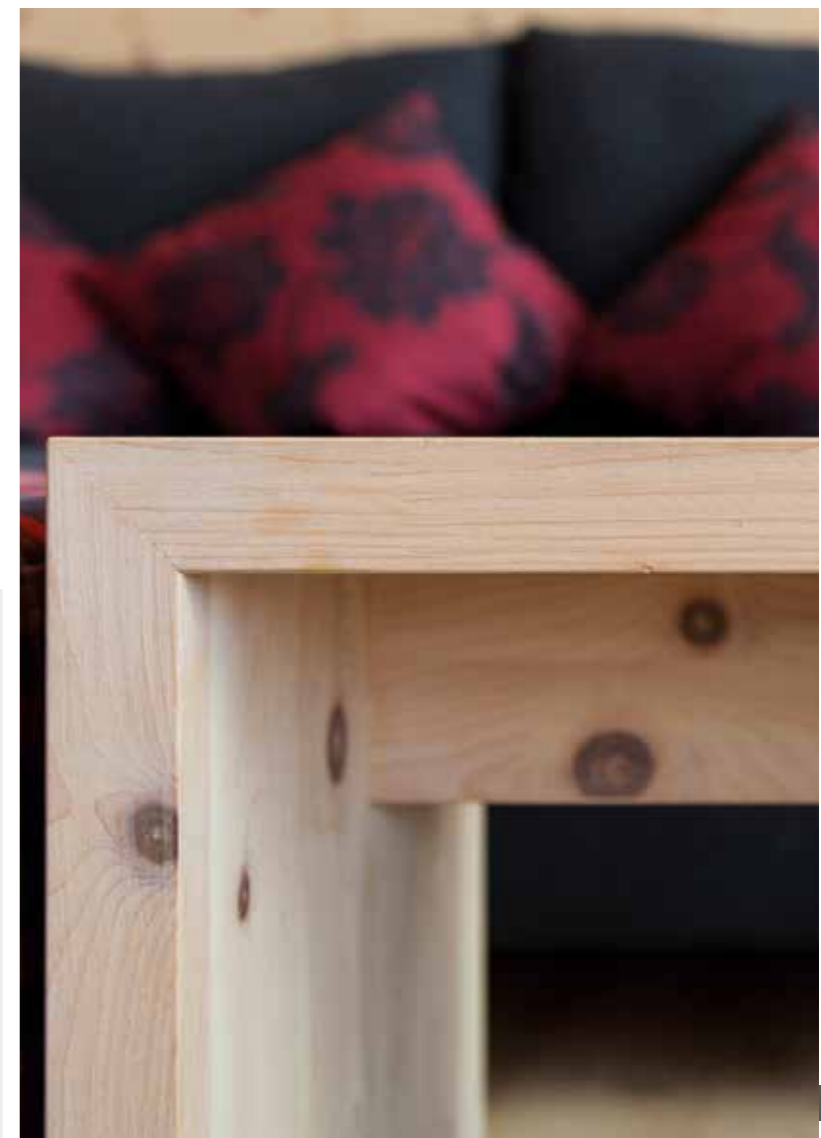
SPRUCE HACKED
suitable for sauna areas

Hotel Graseck
Germany

FLOOR **S**

OAK LAPIS and OAK WHITE

Hotel Graseck
Germany



ELEMENTS

STONE PINE WHITE

Alpinhotel Pacheiner

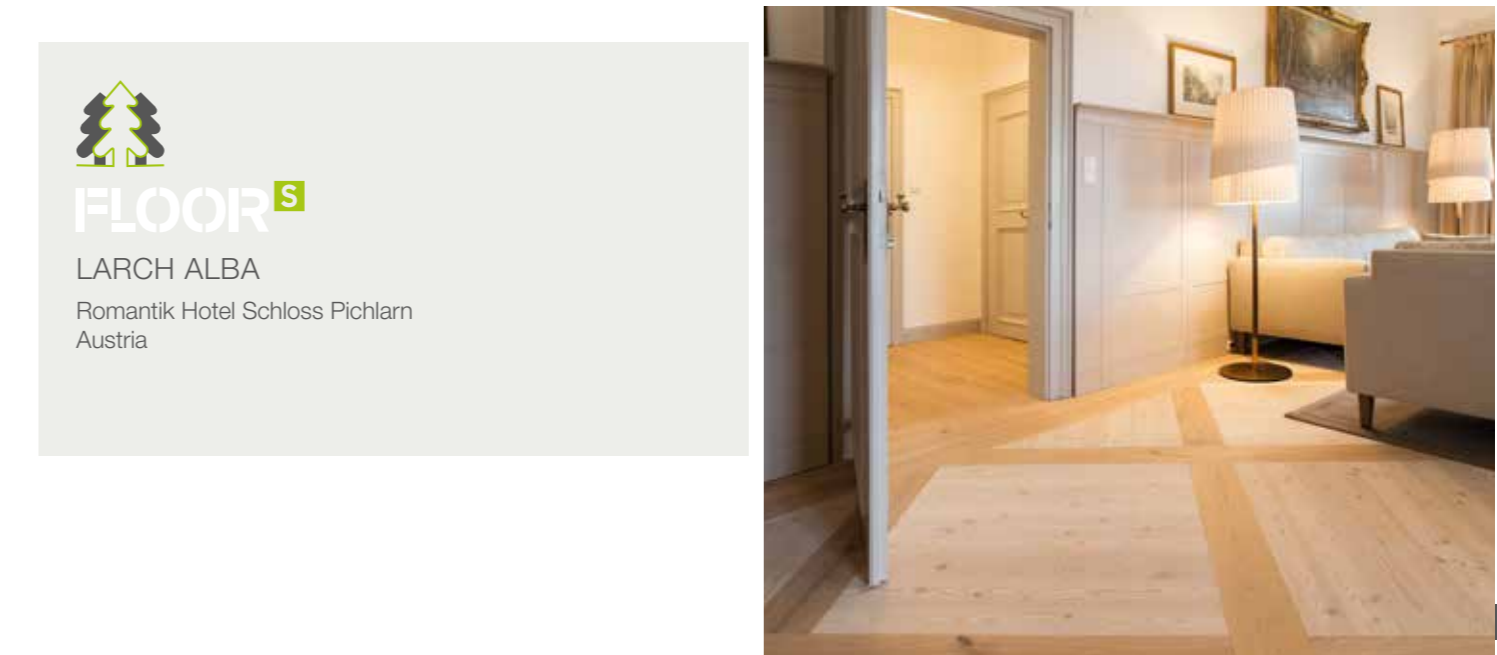
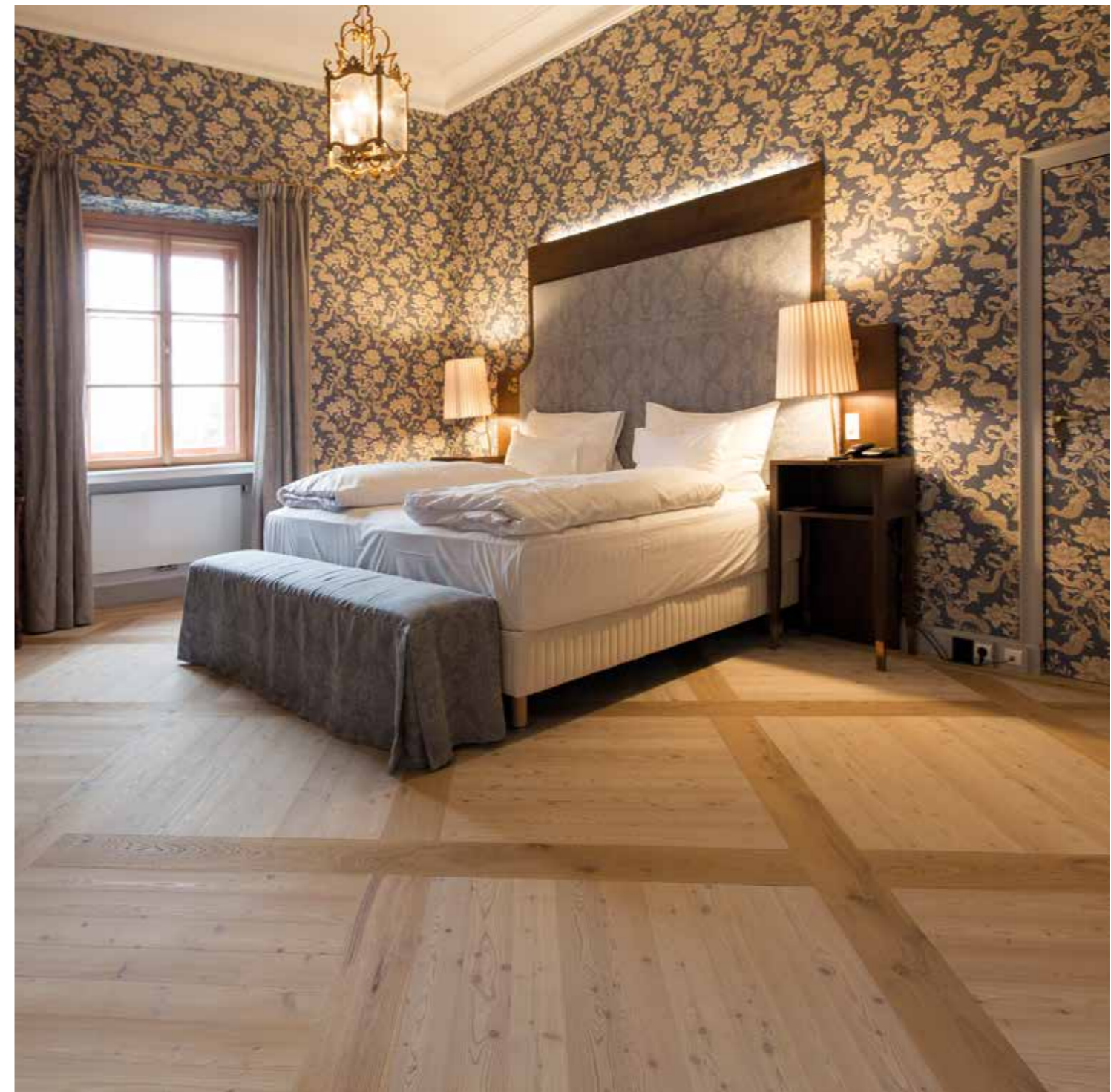
Austria


FLOORS

LARCH BASIC

Alpinhotel Pacheiner

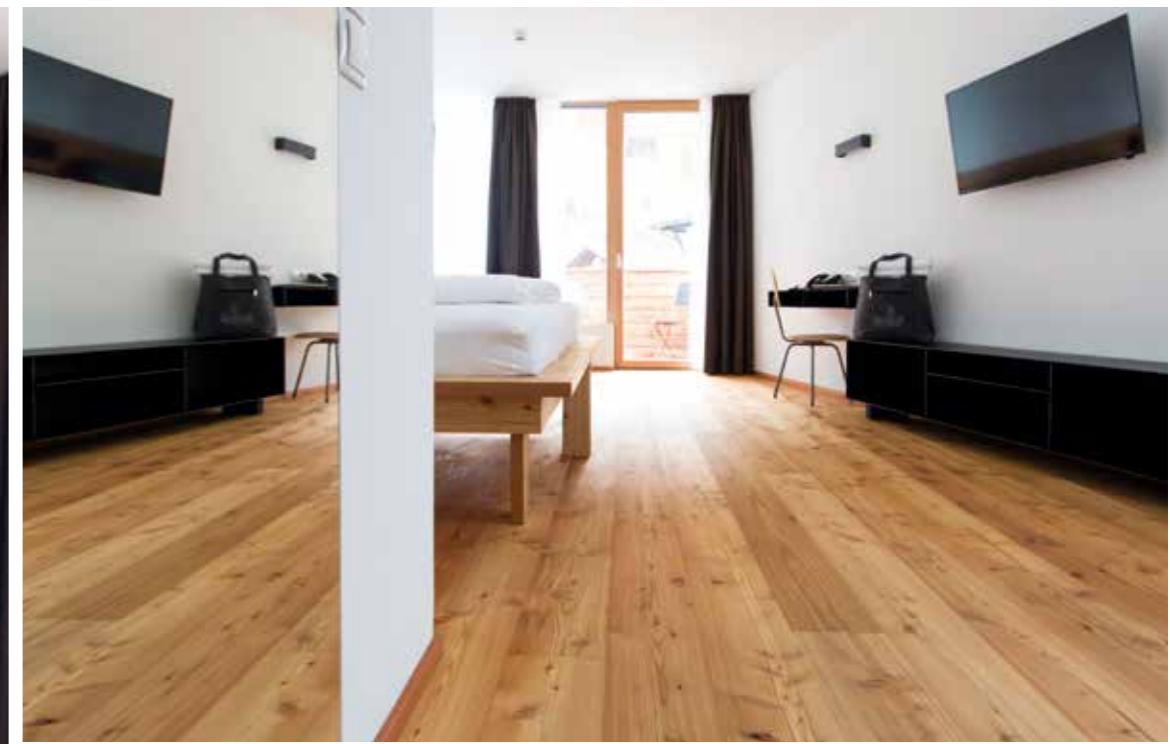
Austria




LARCH ALBA
Romantik Hotel Schloss Pichlarn
Austria




ELEMENTS
RECLAIMED WOOD SUNBAKED
Hotel Zhero
Austria
Project by Jäger Architektur ZT GmbH
and NG Interior Design GmbH




FLOOR^S

LARCH RUSTIC
die berge lifestyle-hotel
Austria






FLOOR^S
 OAK LAPIS and OAK STONE
 Naturhotel Edelweiss Wagrain
 Austria

ACOUSTIC^S
 SPRUCE
 Naturhotel Edelweiss Wagrain
 Austria





FEASIBLE INDIVIDUAL SOLUTIONS, AUSTRIAN QUALITY FROM SUSTAINABLE WOOD - ADMONTER BRINGS THAT VERY SPECIAL ATMOSPHERE TO EVERY ROOM.



FLOOR^s
OAK LAPIS

ELEMENT^s

CUBE RECLAIMED WOOD ALDER GREY

ACOUSTIC^s

OAK LAPIS

Genusssdorf Gmachi, Austria
Photo: www.guenterstandl.de





FLOOR^S

LARCH
Holzhotel Forsthofalm
Austria
forsthofalm.com



ACOUSTIC^S

OAK LAPIS

Genussdorf Gmachi

Photo: www.guenterstandl.de



ELEMENTS

WALL CLADDING ELEMENTS

GALLERIA IMPRESSION

CUBE

FURNITURE

FLOOR

LARCH WHITE BASIC



ACOUSTIC ELEMENTS

The new ACOUSTICs elements skilfully optimise the acoustic properties of a space – the ideal solution for seminar and conference rooms. The natural ecological structure and low weight per unit area make it ideal for new construction as well as renovation. The design trends in modern architecture, such as open spaces, minimalist furnishings and vast glass and concrete surfaces, pose major challenges to designers and architects when it comes to pleasant room acoustics.

Admonter ACOUSTICs in comparison

Product	Product image	Sound absorption	Ball-proof impact	Fire classification	Product Weight/m ²
ACOUSTICs Premium					approx. 4 kg
ACOUSTICs Linear			not tested		approx. 10 kg
ACOUSTICs Dot					approx. 9 kg

Legend:

maximum sound absorption

Ball-proof impact resistance handball certifi. EN 13964

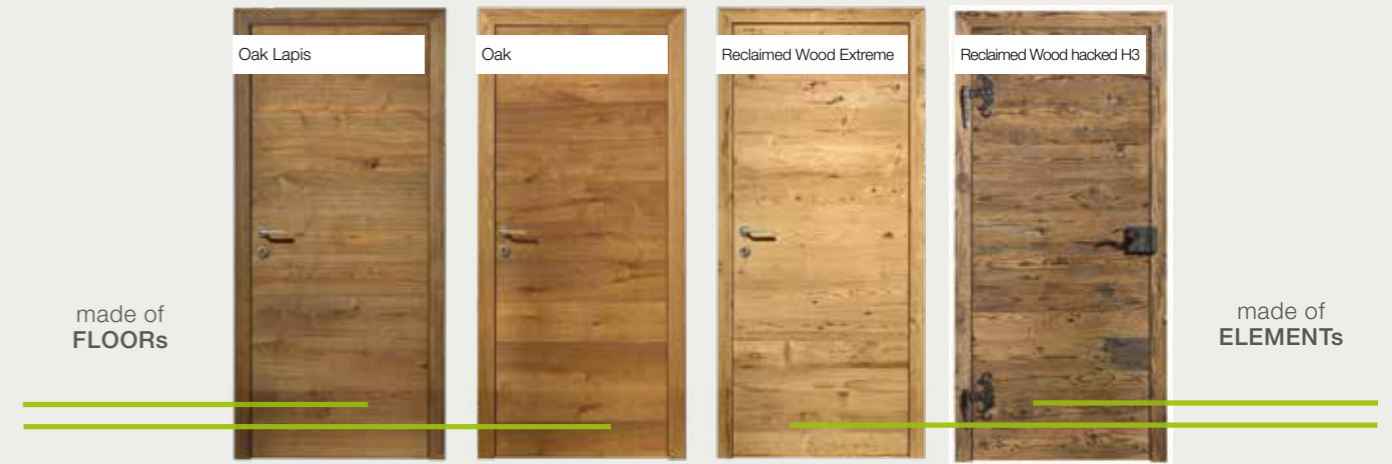
Ball-proof impact res. hockeyball certificated DIN 18032-3

Fire classification: D-s2, d0

Fire classification: bis C-s2, d0 possible

DOORS FROM ADMONTER

The designs from our floor and Elements categories are also available in new high-quality natural wood doors. They are custom made to the desired style with the loving workmanship and quality that is associated with the Admonter name and furnished with high quality fittings.



VERSIONS AND DESIGNS:

- Opening to the inside (opening into the embrasure)
- Opening to the outside
- Doors with glass section (Clear glass or Satinato)

DOOR AND FRAME STRUCTURE:

- The door leaf thickness depends on the design and the base material and can be between 42 and 52 mm
- Both our doors and frames are made completely of real wood
- Solid real wood edges on the door and frame provide high shock resistance
- Due to the top-quality hardwood structure, Admonter natural wood doors meet all the requirements of top-rated interior doors

SIZE RANGE OF STANDARD DESIGN:

- Clear opening height: <= 2010 mm height without surcharge
- Clear opening width: 600 - 1000 mm intermediate size without surcharge
- Wall thickness: 90 - 170 mm intermediate size without surcharge

DOOR THICKNESSES:

- FLOORs - 42 mm / FLOORs INVERSE - 52 mm
- ELEMENTs - 42/46 mm / ELEMENTs INVERSE - 52 mm

DELIVERY TIME:

- on demand!



DOOR TECHNOLOGY AT ITS BEST:

- Magnetic spring lock and concealed hinges come standard and improve the visual appearance and the ease of use

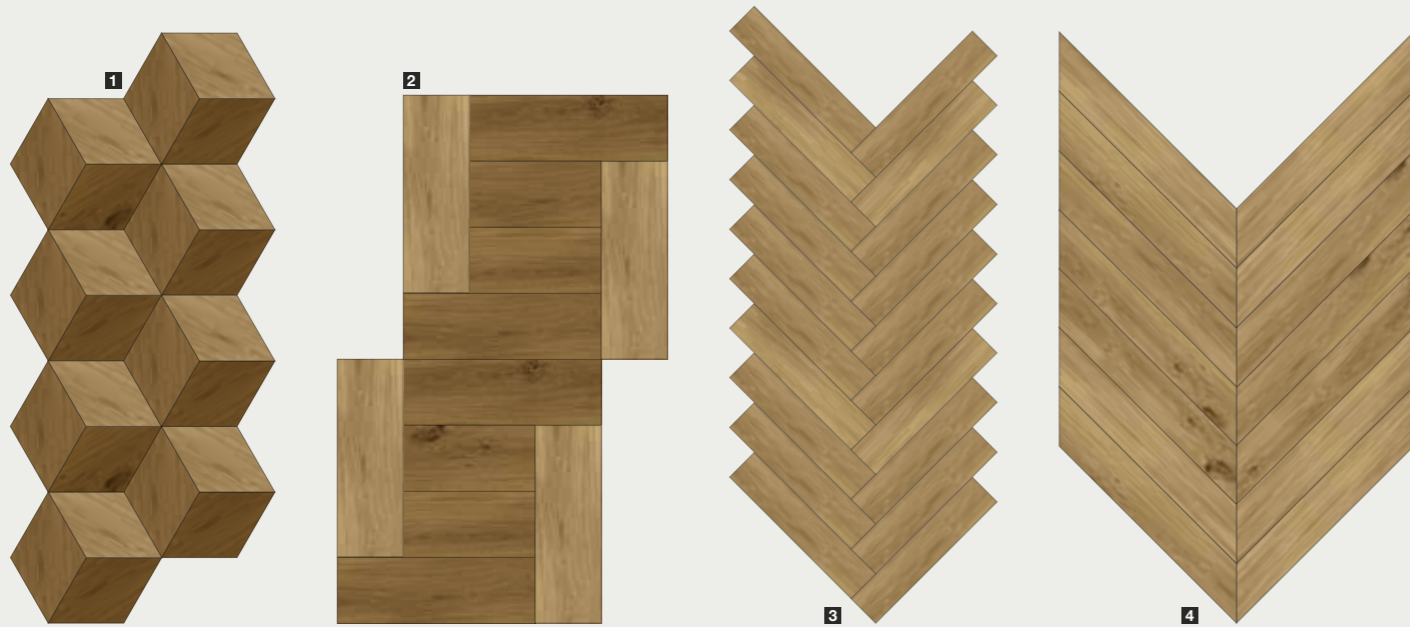


HANDLE:

- Ergonomic design
- Designs reflect current trends
- Flat handle and key escutcheons
- Box lock handle from iron as a striking design element

VARIOUS POSSIBILITIES

Admonter FLOORs walk the talk for format quality. In addition to the high-precision, multi-layered and thus distortion-free structure, Admonter not only impresses with well-known floorboard formats but new to the product range is Admonter Selection – the small format renaissance for demanding discerning decorative floor design.



1 RHOMBUS

The creative individualist. It is rare that one format can offer so many variations – particularly with a 3D effect.

2 PUZZLE

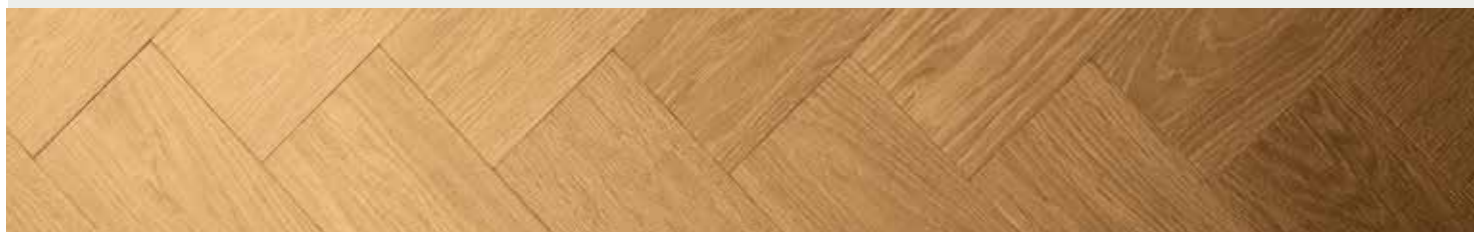
Diverse and animated. Let your imagination run wild and puzzle your way to creating an individual sense of space and ambiance – the possibilities are limitless!

3 HERRINGBONE TWIN

Tradition reinterpreted. Practical to handle, diverse in design and a lot of choice. A simplified execution of the classic herringbone pattern.

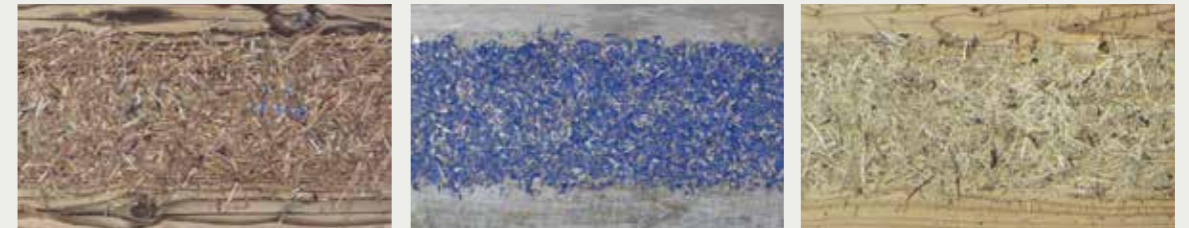
4 CHEVRON

The proven classic. Old love rediscovered – this traditional technique emphasises the natural beauty of wood in a very unique, yet particularly elegant way.



WALL DESIGN

GALLERIA Impression offers two striking types of murals. Printed with natural materials, the wall designs are not only visually pleasing, but also please the nose!



The second GALLERIA Impression line sets creative visual accents with aesthetic designs, manufactured with the most modern, precise digital printing onto GALLERIA spruce. Let us inspire you!



GALLERIA - The wall element „Galleria” gives the interesting look of floor boards on the wall. They offer individual and deep textures that would be beyond the possibility of a board structure that would be laid on a floor.



CUBE - Cube expresses true craftsmanship and its appeal comes from its multi-dimensional structure. Its look is stunning. Walls, ceilings and furniture are truly striking when incorporating Cube.



FORMATS

SMALL

Lengths ranging from 590 to 1.200 mm. Suited for herringbone patterns or small rooms to great effect.



CLASSIC

Classic lengths of Admonter planks range from 1.850 to 2.400 mm.

LONG

Big in size and impressive. Available in 280 x 2.800 mm.

XXLONG

XXLONG
The length of these planks are up to 5.000 mm giving extra character to big rooms. Up to 8.000 mm available on request.

3-layer construction with hard wood top and bottom layer.

(Total thickness 15 mm)

3-layer construction with softwood bottom layer.

(Total thickness 15 mm)

3-layer construction with softwood veneer bottom layer.

(Total thickness 13 mm)

2-layer construction for full surface stick down installation.

(Total thickness 10 mm)

TEXTURES & SURFACES



SANDED



BRUSHED / RELIEF**



SCRAPED



CROSS



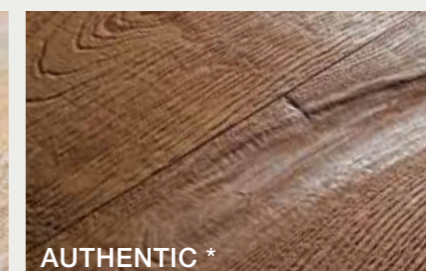
ALPIN



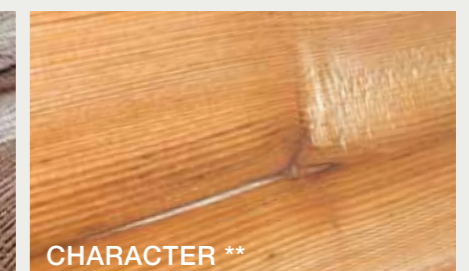
ANTICO *



USED *



AUTHENTIC *



CHARACTER **



HACKED **

NATURAL OILED EASY CARE

Our EASY CARE products are delivered PREFFINISHED.

This means that the floor does not have to be oiled after installation, and can be used and walked on immediately after installation!

The new natural oiled easy care finish provides a rich, durable surface, and also has the desired look from the beginning, as otherwise only floors with an additional oil coating offer. Without any effort – just easy.

NATURAL OILED PRO CARE

Natural Oiled Pro Care floors require a post-installation oil before they can be used.

MATT LACQUERED

The application of matt lacquer will entirely seal the pores of the wood. The matt lacquered finish is very durable and absolutely uncomplicated in care & maintenance.

SOAPED SURFACE

Wood with a soap finish that you do not want to stop touching. Colour that draw attention through their mat shades giving a touch of timeless patina. The special appearance requires frequent maintenance.

* only FLOORs
** only ELEMENTs

Admonter 
NATURE'S FAVOURITE DESIGNER

FLOOR^S ELEMENT^S DOOR^S STAIR^S ACOUSTIC^S

Admonter Holzindustrie AG
Sägestraße 539, 8911 Admont, Austria
Tel.: + 43 (0) 3613 / 3350-0
Fax: + 43 (0) 3613 / 3350-117
E-Mail: info@admonter.at



www.admonter.at

Origin of wood: EUROPE
(Exception: American Walnut, American Cherry, Siberian Larch)