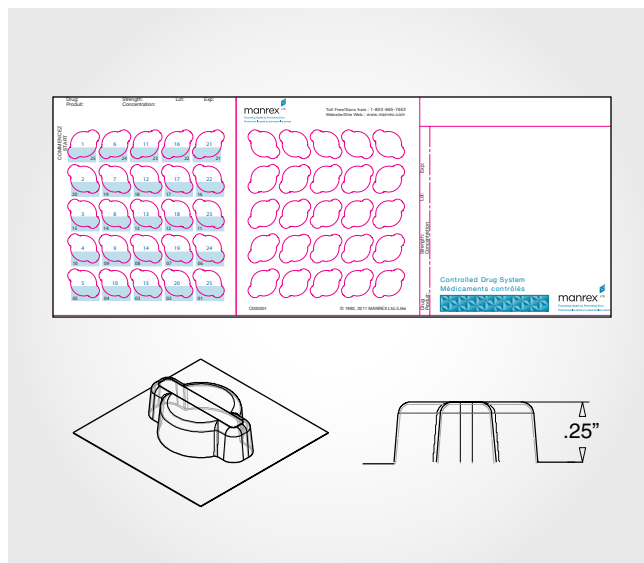


## Controlled Drug System Heat Seal Kit

Available by kit of 200

The Controlled Drug System kit includes 200 cards and blisters. The Controlled Drug Card is a 25-dose hermetically heat sealed blister package. The hinged spine allows the front cover to close over the blister to protect its integrity when not in use. The unique design of the blister allows pharmacy to package either tablet or capsule forms of controlled substances. The raised top edge of the card contains the drug detail which is quickly and easily identified.

<b>KIT ITEM NUMBER:</b>	<b>SIZE:</b>	<b>COLOR:</b>
MBM25	Small	Clear
MBM25A	Small	Amber

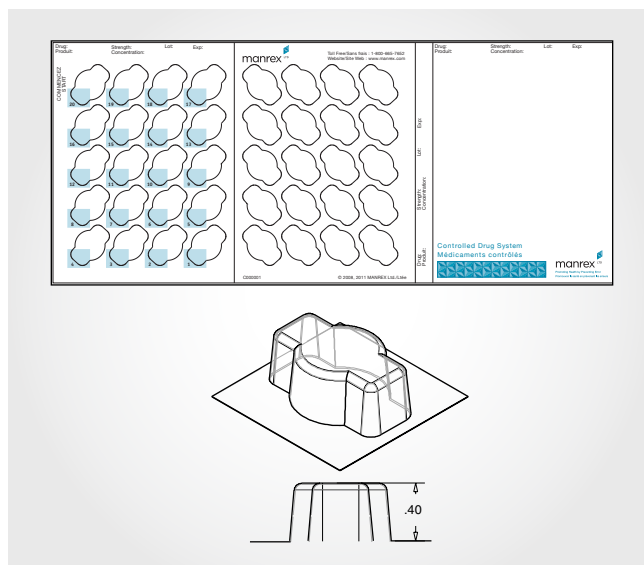


## Controlled Drug System Pressure Sensitive Kit

Available by kit of 200

Our Pressure Sensitive Controlled Drug System kit includes 200 cards and blisters. The Controlled Drug Card is a 20-dose hermetically sealed blister package that does not require heat sealing. The hinged spine allows the front cover to close over the blister to protect its integrity when not in use. The unique design of the blister allows pharmacy to package either tablet or capsule forms of controlled substances, along with larger medications, such as Hydromorph.

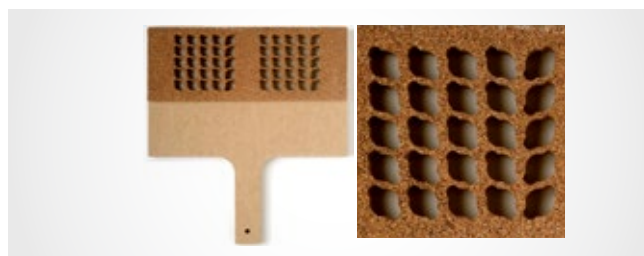
<b>KIT ITEM NUMBER:</b>	<b>SIZE:</b>	<b>COLOR:</b>
MBM26	Deep	Clear
MBM26A	Deep	Amber



## Controlled Drug 25 Dose Platen

The Controlled Drug Platen is made of MDF with a cork surface. It is durable, light and easy to use. A strong, uniform seal is achieved on every card. This platen is used to seal two Controlled Drug Cards at a time.

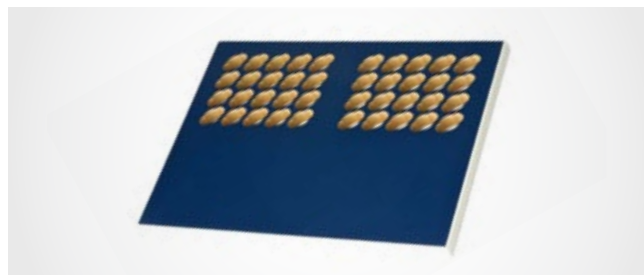
ITEM NUMBER: 40-002 – Available individually



## Controlled Drug 20 Dose Platen

The Controlled Drug Platen for the 20 dose pressure sensitive system is made of MDF with a laminate surface. It is durable, light and easy to use. A strong, uniform seal is achieved on every card. This platen will seal two Pressure Sensitive Controlled Drug Cards at a time.

ITEM NUMBER: 40-007 - Available individually



## Roller

A Speedball Rubber Brayer 4" roller that provides even seal pressure.

**ITEM NUMBER: 36-016**



## Controlled Drug Labels

The Red Controlled Drug Labels are used to label immediate release narcotics. The Green Controlled Drug Labels are to be used for labeling sustained release narcotics.

**ITEM NUMBER: 1028** - Roll of 200 Red Labels

**ITEM NUMBER: 1029** - Roll of 200 Green Labels

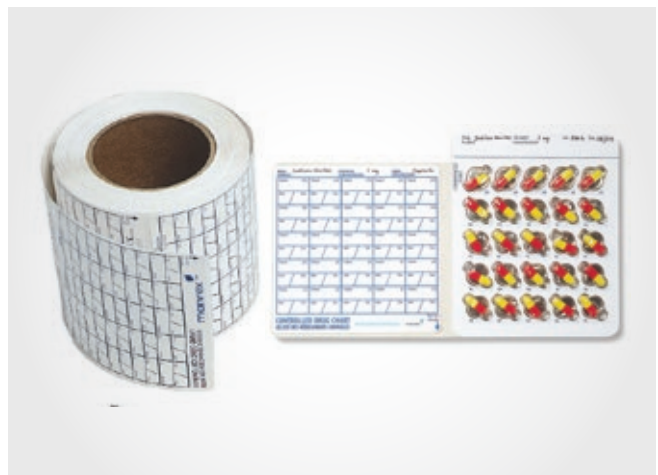


## Controlled Drug Chart

The Controlled Drug Chart is a piggy-back sign-off label that is adhered to the inside front cover of the Controlled Drug Card by pharmacy. As each dose is administered from the card the corresponding blister administration number is signed-off on the chart. When the card is empty the top ply of the label is peeled off and put into a permanent narcotic record book. Controlled Drug Card not included.

**ITEM NUMBER: 1027** - Package of 200-25 Dose Chart Labels

**ITEM NUMBER: 1020** - Package of 200-20 Dose Chart Labels



## Controlled Drug Bin

The Controlled Drug Bin carries up to 30 filled Heat Seal Controlled Drug Cards, or 20 of the Pressure Sensitive Controlled Drug Cards. This bin is typically kept in a medication cart or in a locked narcotic cupboard in the medication room. It is used to store and organize the filled cards for administration. Controlled Drug Cards and Blisters are not included.

**Measurements:** 12"L x 5"W x 5"H

**ITEM NUMBER: 302** - Available individually



### Safe Seal

The Safe Seal, with its patented magnetic auto open feature, can seal a compliance blister card in seconds while you're busy prepping the next one. Eliminate guesswork; you'll always know the pressure setting with the digital pressure display. The patented magnetic assist lock down provides maximum pressure so locking your machine down is effortless, delivering even heat and pressure edge to edge for a perfect application every time. For use with heat seal and reusable card systems.

**Features include:**

- Patented, Magnetic Auto open feature
- 3/4" thick coated upper platen
- Digital time and temperature controls
- Temp range 170° - 430° (76°-220° C)
- °F or °C available

**Dimensions:** 26"H x 16"W x 21"D

**Platen Size:** 11" x 15"

**Shipping dimensions:** 31"L x 21"W x 21"H

**Shipping Weight:** 72 lbs

**ITEM NUMBER:** 41-019

