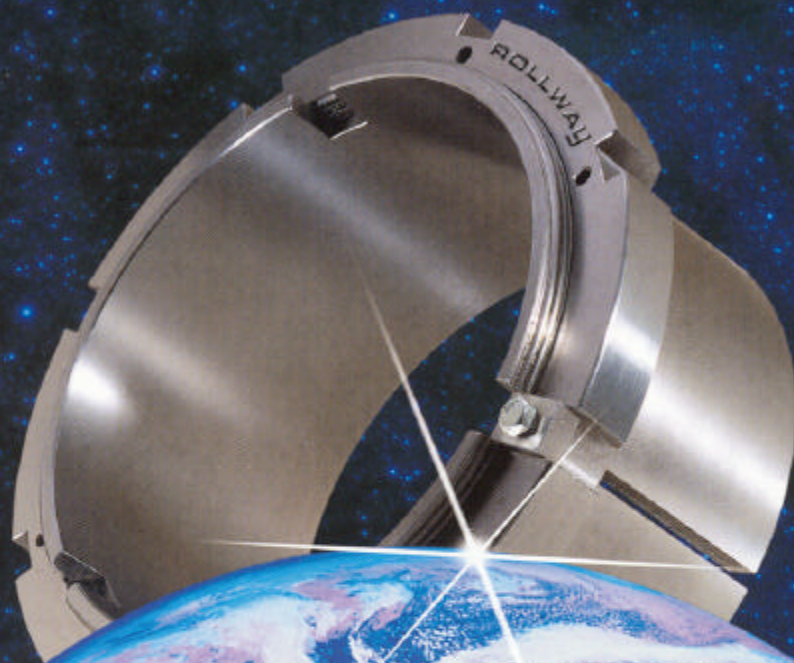




ROLLWAY

Rollway Sleeves



PRODUCT RANGE

ADAPTER & WITHDRAWAL SLEEVES

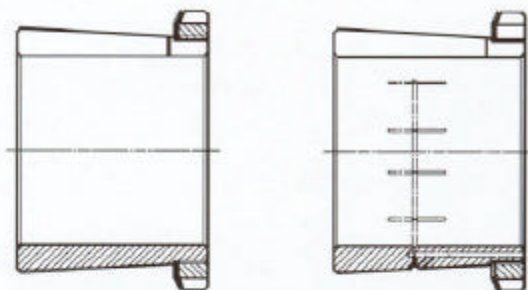
LOCK NUTS & WASHERS

ADAPTER SLEEVES:

H 204 and up
H 304 and up
H 2304 and up
H 3024 and up
H 3120 and up
H 3260 and up

Remark:

Hydraulic sleeves are available for larger sizes
ref: H ... OH

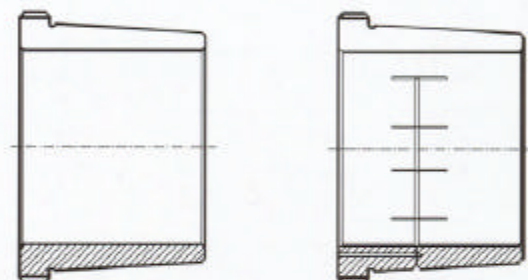


WITHDRAWAL SLEEVES:

AH 204 and up
AH 304 and up
AH 2304 and up
AH 3024 and up
AH 3120 and up
AH 3260 and up
AH 24024 and up
AH 24124 and up

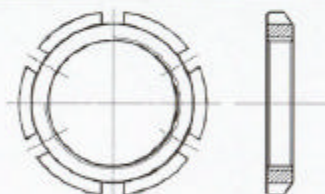
Remark:

Hydraulic sleeves are available for larger sizes
ref: AH ... OH

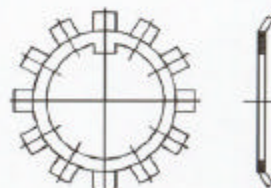


LOCK NUTS & WASHERS

KM 0 and up



MB 0 and up



ADAPTER & WITHDRAWAL SLEEVES LOCK NUTS & WASHERS

ADAPTER SLEEVES:

Rollway Adapter Sleeves are supplied complete with lock nut and locking device. The sleeves have a slotted design and an external taper of 1:12. Adapter sleeves allow a simple positioning of bearings in any position.

Hydraulic Sleeves are available as for larger sizes.



WITHDRAWAL SLEEVES:

Rollway Withdrawal Sleeves have a slotted design and an external taper of 1:12, except AH 240 and AH 241 series, which have an external taper of 1:30.

The nuts required for dismounting are not supplied with the sleeves and must be ordered separately.

Hydraulic Withdrawal Sleeves are available for larger sizes.



LOCK NUTS & WASHERS

Lock Nuts (KM) and Washers (MB) are used to locate bearings and other components on shafts.



Adapter (H) and Withdrawal Sleeves (AH) are used to secure tapered bore bearings on cylindrical shafts.

They make the mounting and dismounting easier, and they often simplify the bearing arrangement design.

To make the fitting of larger bearings easier, both adapter and withdrawal sleeves can be provided with hydraulic lubrication grooves.

Smaller Adapter and Withdrawal Sleeves, Lock Nuts and Washers (upto bore diameter 200 mm) are phosphated on the surface (black). The bigger sizes are blank.



EMERSON
Industrial Automation

Rollway Bearing N.V.

Heiveldekens 16, B-2550 Kontich
(Antwerp) Belgium

T: +32 03 457 6870

F: +32 03 457 5138

info@rollway-bearing.be

www.rollway-bearing.be



ROLLWAY

