



signsystemsTM
international ltd



Showcase WSM



T +44 (0) 1392 686216
www.signsystems ltd.com



Studio 2gd Cofton Road,
Marsh Barton, Exeter EX2 8QW



Introduction

signsystems are pleased to announce that once again the prestigious range of Showcase WSM notice boards and poster cases are available from us as part of our family of products. Walter Solbach Metallbau (WSM) have been producing high quality aluminium poster and display cases since the early 1960's. Built to the most exacting of DIN (Deutsches Institut für Normung) quality standards, these cases are incredibly well designed and exceptionally durable.





WSM Construction Overview

Quality at WSM is not just a slogan but rather the coming together of the best materials, state of the art production and the most critical of checks during production. Utilising high quality materials, sophisticated manufacturing methods in modern factories and with the expertise of their expertly trained staff, WSM apply strict controls at all levels of production. From material testing through to especially critical final inspection; everyone at WSM consciously adds their contribution.





Product Range

Our range includes all internal and external models, all available in a variety of sizes and finishes. All models are available in a silver anodised finish and they can also be powder coated to any RAL colour.

The notice boards are illuminated with T5 fluorescent tubes or LED lighting.

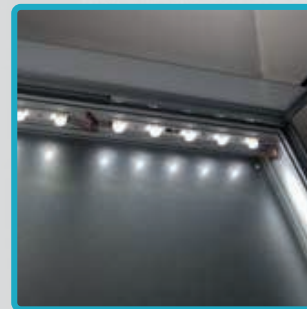
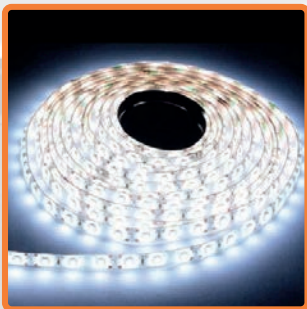
Our poster cases are LED lit only.





LED - Efficient energy illumination

This environmentally friendly and virtually maintenance free LED technology allows many new possibilities within illuminated notice boards. All of the electrical equipment contained within our range of showcases is produced according to ENEC standards: this is the high quality European mark for electrical products and demonstrates compliance with European standards.





LED - Efficient energy illumination

Low Voltage technology

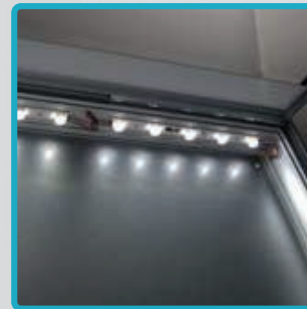
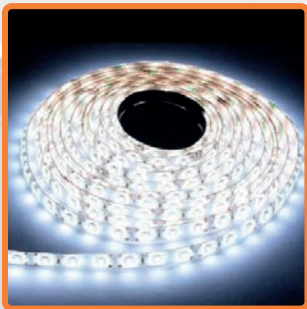
Long service life

High efficiency combined with lower energy use

UV free light-no diffusion of illuminated objects

Low warming development

Shockproof and vibration proof





Different styles of WSM

All of the notice boards and poster cases can be mounted in a number of different ways including wall mounted, post mounted on lecterns in both double and single-legged options or with overhead lighting.

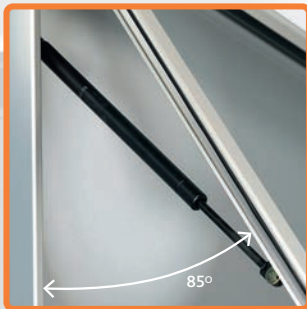
All of the cases come in standard sizes, although custom models can be fabricated to your own requirements.





Features include

- Stable maintenance free aluminium construction
- Glass pane made from TSG safety glass with a weatherproof rubber seal
- Self-holding gas struts open and hold front panel in position when opened
- 85° opening for full internal access
- Security locks located on the frame
- Rear magnetic board, galvanised and powder coated silver
- Double sided option available on certain ranges





signsystems™
international ltd



Showcase WSM Double Unit
Powder coated Blue for
The University of Exeter



Black Showcase WSM
Lectern Unit
for The Royal Parks



signsystems™
international ltd



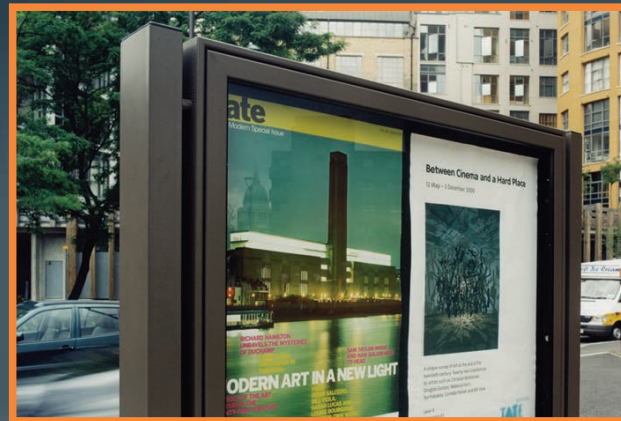
Wall mounted
Showcase WSM Poster cases
for The National Gallery



Showcase WSM
Notice board for The University
of Düsseldorf



signsystems™
international ltd



Post mounted Showcase WSM
Display Case for
Tate Modern



Illuminated Showcase WSM
Directory for The Lakeside
Shopping Centre



signsystemsTM
international ltd

To request a brochure or quotation on our Showcase WSM range, or for information on any of our other signage products, please contact the **signsystems** sales office on 01392 686216
Alternatively email office@signsystemsltd.co.uk

signsystems international limited
Studio 2gd
Cofton Road
Marsh Barton
Exeter EX2 8QW
T +44 (0) 1392 686216
F +44 (0) 1392 686681
www.signsystemsltd.com



allsigns

www.allsigns.co.uk



pryorsign

www.pryorsign.co.uk