

# prepSTATION



## Operating Instructions

## Identification

The present operating instruction shows how to work with Precisa prepSTATION. For detailed information about handling the balance, prepASH or prepDATA refer to manuals of these instruments.

## Customer service

Precisa Gravimetrics AG  
Moosmattstrasse 32  
CH-8953 Dietikon  
Tel. +41-44-744 28 28  
Fax. +41-44-744 28 38  
email [service@precisa.ch](mailto:service@precisa.ch)

<http://www.precisa.com>

Refer to our website for information about local customer service centers and details of their addresses.

## Copyright

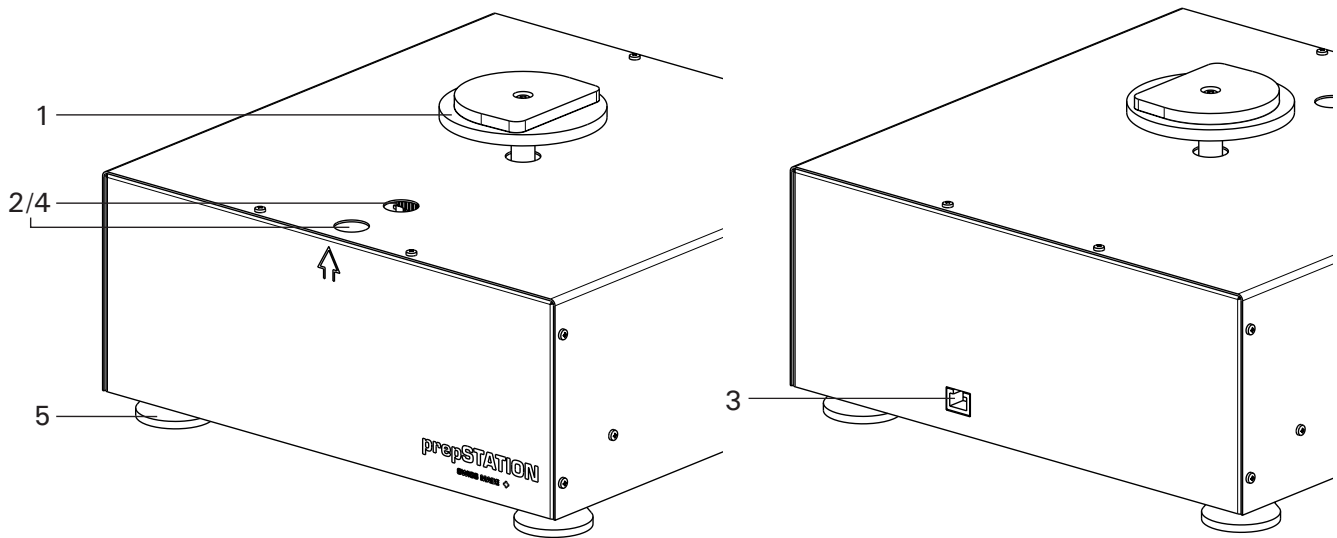
These operating instructions are protected by copyright. All rights reserved. No part of the operating instructions may be reproduced, processed, duplicated or published in any form by photocopying, microfilming, reprinting or other process, in particular electronic means, without the written agreement of Precisa Gravimetrics AG.

© Precisa Gravimetrics AG, 8953 Dietikon, Switzerland, 2011.

■ 1 Overview

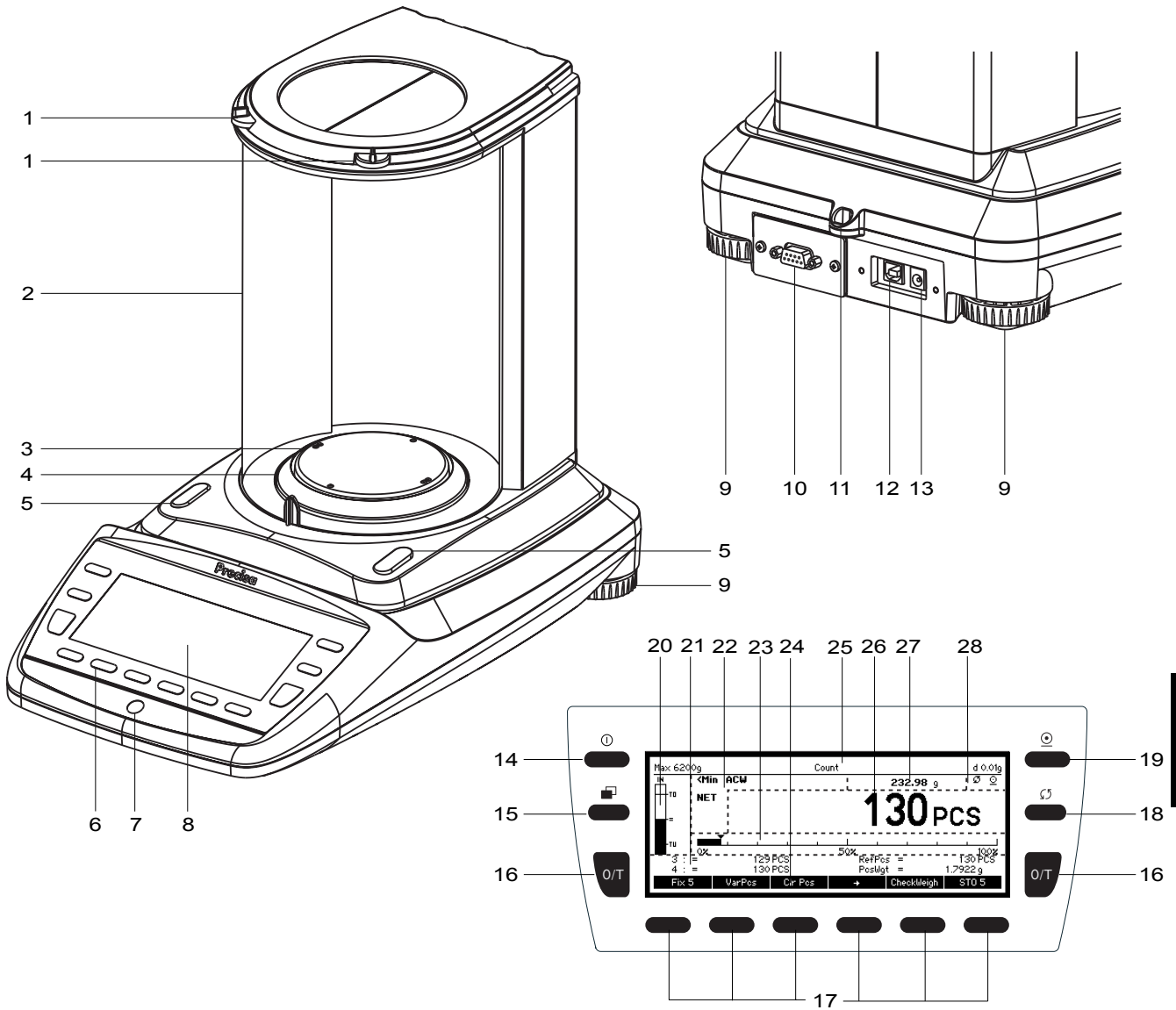
# 1 Overview

## 1.1 Overview prepSTATION rotary unit



No.	Description	Section / Page	No.	Description	Section / Page
1	prepSTATION rotary unit		4	Point of reference for crucible position	
2	Sensors for crucible detection		5	Adjustable feet	
3	RJ45 connector for connection to Balance 360 EP		6		

## 1.2 Overview EP 120A



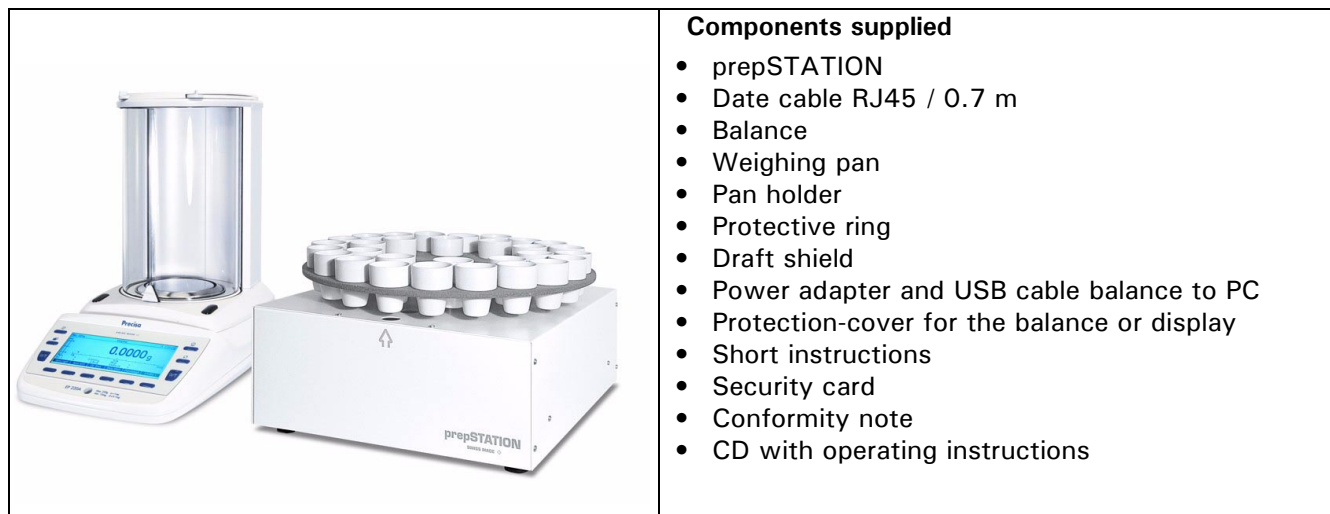
English

No.	Description	Section / Page	No.	Description	Section / Page
1	Top draft shield opening		14	On/Off key	
2	Draft shield		15	Menu key	
3	Weighing pan		16	Tare / Zero key	
4	Protective ring		17	Soft keys	
5	Sensor for side draft shield opening		18	Rotate key	
6	12-key control panel		19	Print key	
7	Levelling bubble		20	CheckWeigher	
8	Display		21	Info Page area	
9	Adjustable feet		22	Notice area	
10	Serial interface, DB9 socket		23	Capacity indicator	
11	Mechanical anti-theft protection		24	Function bar	
12	USB device connector for connection to PC		25	Headline	
13	Connecting socket for power adapter		26	Primary display	
			27	Secondary display	
			28	Activita area	

## ■ 2 Inspection, assembly

# 2 Inspection, assembly

Inspect delivery for complete supply immediately on unpacking all components.



The balance is delivered in partly dismantled condition. Assemble the individual components in the following sequence:

- Install the draft shield as well as the protective ring with the two screws supplied
- Place the weighing pan in position
- Insert the power adaptor cable plug into the socket at the rear of the balance

### ! NOTE

A screwdriver is required for assembly.

All parts must fit together easily. Do not apply force. Customer Service will be pleased to help you with any problems.

## 3 Connection



- Connect the balance with prepSTATION with Date cable RJ45 / 0.7 m
- Connect your PC with the EP120A balance with USB cable
- Connect your PC with local network
- Make sure that prepASH is properly connected to the local network as well.

## 4 Accessories

<b>Accessories for the prepSTATION and prepASH</b>	<b>Article number</b>
Crucible-tweezers	PN 3950-099
Crucible-tweezers for crucible-lid handling	340-7090
Sample tray holder	340-8012
Turn-table for 29/19 samples, "Volatiles" for prepASH 229 and prepASH 219	340-4064
Turn-table for 29/19 samples, SiC for prepASH 229 and prepASH 219	340-4014
Turn-table for 12 samples, SiC for prepASH 229, prepASH 219 and prepASH 212	340-4072
Crucible, silicate ceramic, set of 5 pieces use with turn-table 29/19	340-8030
Crucible, Al <sub>2</sub> O <sub>3</sub> , 5 pieces use with turn-table 29/19	340-8031
Crucible for use with lid Al <sub>2</sub> O <sub>3</sub> , set of 5 pieces use with turn-table 29/19 and crucible-lid 340-8033	340-8032
Crucible-lid, Al <sub>2</sub> O <sub>3</sub> , set of 5 pieces use with turn-table 29/19 and crucible 340-8032	340-8033
Standard Crucible, silicate ceramic, set of 5 pieces use only with turn-table 12 and adapter 340-8035	340-8034
Adapter for standard crucible, silicate ceramic, set of 5 pieces use only with turn-table 12 and standard crucible 340-8034 or other crucible available from the market	340-8035
<b>Accessories for the balance</b>	
Draft shield 360 automatic for 0.01mg and 0.1mg balances, height 180mm	350-8658
Draft shield 360 manual for 0.01mg and 0.1mg balances, height 260mm	350-8659
Draft shield 360 manual for 0.01mg and 0.1mg balances, height 180mm	350-8660
Data cable DB9 Male / DB9 Female (PC), 1.5m	350-8672
Data cable DB9 Male / DB25 Male (Printer), 1.5m	350-8673

## ■ Contents

<b>1</b>	<b>Overview .....</b>	<b>2</b>
1.1	Overview prepSTATION rotary unit .....	2
1.2	Overview EP 120A .....	3
<b>2</b>	<b>Inspection, assembly .....</b>	<b>4</b>
<b>3</b>	<b>Connection .....</b>	<b>4</b>
<b>4</b>	<b>Accessories .....</b>	<b>5</b>
<b>5</b>	<b>Weighing-in of the sampels .....</b>	<b>8</b>
5.1	How to open prepSTATION application on the balance .....	8
5.1.1	Deleting measured values .....	11
5.1.2	Setting Check-Weigher .....	13
<b>6</b>	<b>Preparation of the sample list .....</b>	<b>14</b>
6.1	Create/Open a sample list .....	14
6.2	Editing a sample list .....	15
6.3	Send the Sample list to the prepSTATION.....	16
6.4	Monitoring a current weighing-in progress.....	16
6.5	Saving the Sample list.....	16
6.6	<b>Error Messages .....</b>	<b>16</b>
6.6.1	No Sample list on prepSTATION. Try again. ....	16
6.6.2	Weighing-in was aborted by user. ....	16
6.6.3	prepSTATION Application doesn't run on prepSTATION. Start Application, then retry. ....	16
6.6.4	Sending Sample list to prepSTATION failed. ....	16
6.6.5	The Reference sample is missing. Cannot read a Sample list. ....	17
6.6.6	Error when transmitting Line [Number], Name or state.....	17
6.6.7	Could not create directory, to store Weighing-in Sample list. ....	17

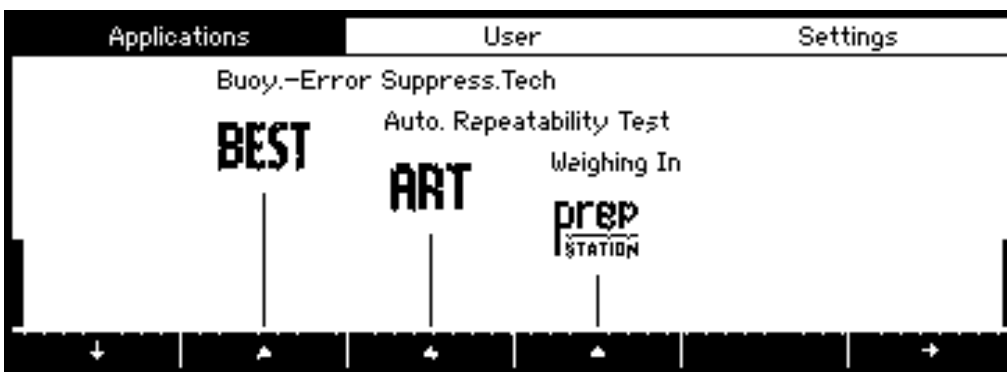
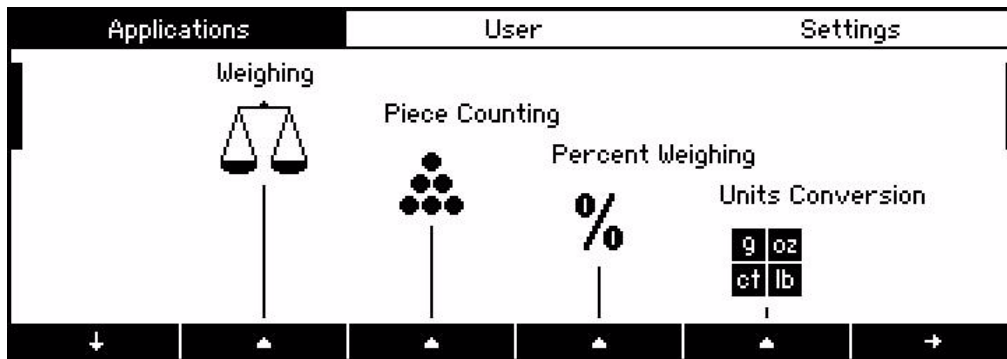




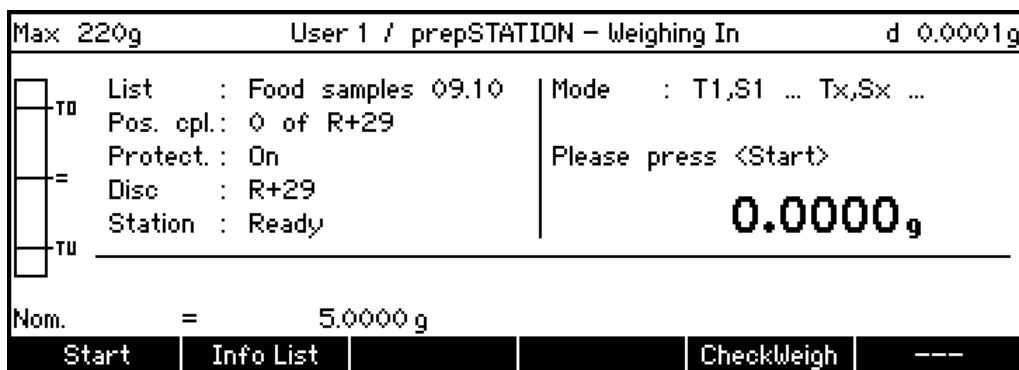
## 5 Weighing-in of the sampels

### 5.1 How to open prepSTATION application on the balance

- Press «ON/OFF» to switch on the balance.
- Hold «MENU» to switch the home screen.
- Scroll the screen until you find the „prepSTATION“ icon.



- Press the switch {▲} below the prepStation icon.  
The prepSTATION application screen will appear..



Lines	Description
List	Name of the current Sample list
Pos. cpl	Number of positions
Protect.	Protection on/off
Disc	Disc type (12, 19 or 29)
Station	Connection status (Connected / Not Connected)
Mode	Order of Tare and Net measuring

Soft key	Description
Start	
Info List	
CheckWeigh	

Start	Start weighing-in
Info	Info about device, software and sample list
Go to Pos.	Unused
CheckWeigh	Check-weigher application

Load sample list on the prepSTATION with a help of prepDATA program.

For more information about loading sample list look at chapter "Preparation of the sample list".

For starting the weighing-in process push the Start key on the prepSTATION application screen.

The following screen appears. .

Max 220g		User 1 / prepSTATION - Weighing In		d 0.0001g	
TD	List	: Food samples 09.10	Tare	=	
	Position	: R Actual: --	Sample	=	
=	Name	: Reference	Go to reference R, <OK>		
	Ident.	: -	<b>0.0000g</b>		
	Group	: -			
Nom.		=	5.0000g		
Quit	K-	->I	Info List	CheckWeigh	OK

Soft key	Description
Quit	Quits an input without saving the changes
Info List	Information about the sample list
CheckWeigh	Check-weigher application
<-- and -->	Positioning keys
OK	here. Go to the recerence R

English

The weighing-in process always starts with the position calibration of the disc position. Press {ok} to calibrate. The disc rotates to reference position R. Take that crucible and put it on the weighing pan.

Then press {assume} and put the crucible back.

Max 220g		User 1 / prepSTATION - Weighing In		d 0.0001g	
TD	List	: Food samples 09.10	Tare	=	20.3666g
	Position	: R Actual: R	Sample	=	20.3666g
=	Name	: Reference	Put crucible back		
	Ident.	: -	<b>20.3666g</b>		
	Group	: -			
Nom.		=	5.0000g		
Quit	K-	->I	+	CheckWeigh	Assume

The calibration is done. The lines "Position" and "Actual" both show an R. Press OK to move to the next position.

When the next position of the disc will arrive, take the crucible from the disc, put it on the weighing pan and press {Assume}

for tare.

## ■ 5 Weighing-in of the sampels

Put in the sample and press {assume} to determin the weight of the sample.

Max 220g		User 1 / prepSTATION - Weighing In		d 0.0001g	
IN	List : Food samples 09.10	Tare =	20.3664 g		
TD	Position : 1 Actual: 1	Sample =			
=	Name : Eggs SN01	Place Sample, <Assume>			
TU	Ident. : -	NET	<b>5.3198g</b>		
	Group : 1				
Nom. = 5.0000 g					
←	Info List	Del.Measur	CheckWeigh	Assume	

Max 220g		User 1 / prepSTATION - Weighing In		d 0.0001g	
IN	List : Food samples 09.10	Tare =	20.3664 g		
TD	Position : 1 Actual: 1	Sample =	5.3198 g		
=	Name : Eggs SN01	Put crucible back			
TU	Ident. : -	NET	<b>5.3198g</b>		
	Group : 1				
Nom. = 5.0000 g					
←	Info List	Del.Measur	CheckWeigh	---	

Then put the crucible back in the disc. Repeat these steps for all the samples.

You can manually change the sample by pressing the positioning keys { | <-- } and { --> | }.

When all positions are weighed, send the list to prepDATA by pressing {OK} key.

Max 220g		User 1 / prepSTATION		d 0.0001g	
TD	List : Food samples 09.10	Tare =	20.3666 g		
=	Position : R Actual: --	Initial =	20.3666 g		
TU	Name : Reference	SEND List, <OK>			
	Ident. : -	NET	<b>-0.0002g</b>		
	Group : -				
Nom. = 5.0000 g					
Quit	←	→	+	CheckWeigh	OK






Now your sample list is saved on the prepASH and you can start your moisture and ash analysis.

### 5.1.1 Deleting measured values

You can delete measured value of a sample and repeat the weighing-in. Select therefore the relevant sample with a help of positioning keys { | <-- } and { --> | }. Then press { → }.

Max 220g		User 1 / prepSTATION - Weighing In		d 0.0001g	
<input type="checkbox"/>	TU	List : Food samples 09.10	Tare = 20.3664 g		
<input type="checkbox"/>	=	Position : 1 Actual: 1	Sample = 5.3198 g		
<input type="checkbox"/>	TU	Name : Eggs SN01	Next position, <OK>		
		Ident. : -		0.0000g	
		Group : 1			
Nom. = 5.0000 g					
+		Info List	Del.Measur	CheckWeigh	OK

Press { Del.Measur } to delete the Tare and Initial value of the sample.

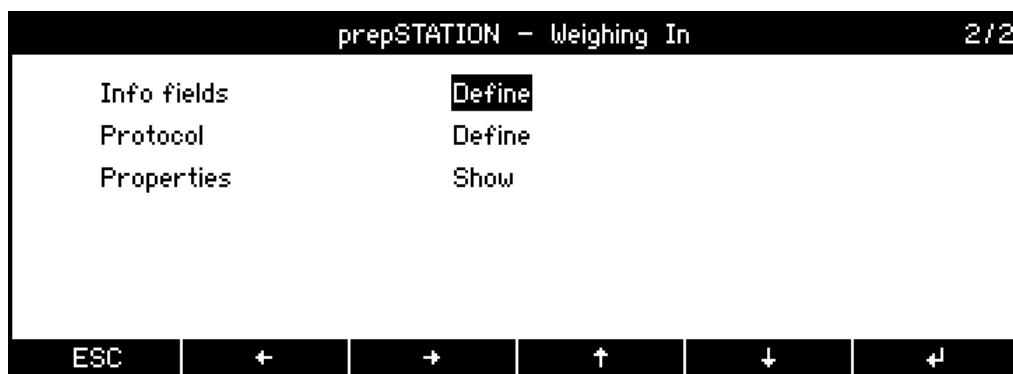
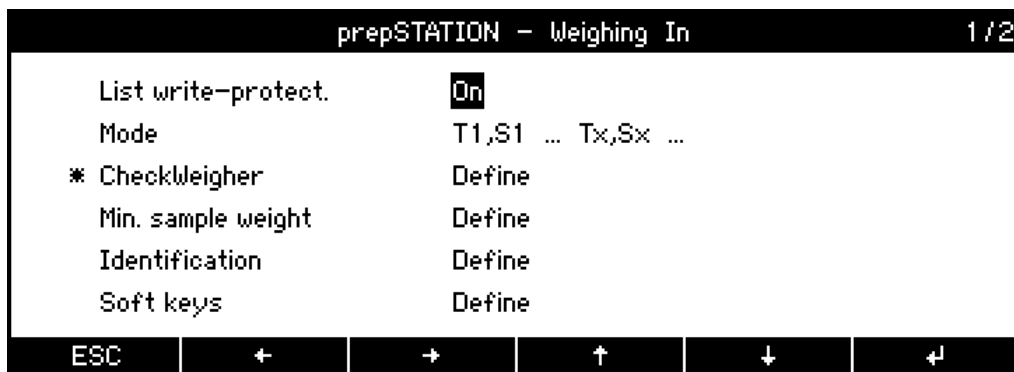
Max 220g		User 1 / prepSTATION - Weighing In		d 0.0001g	
<input type="checkbox"/>	TU	List : 	0.3664 g		
<input type="checkbox"/>	=	Position : 	5.3198 g		
<input type="checkbox"/>	TU	Name : 			
		Ident. : 		000g	
		Group : 			
Nom. = 5.0000 g					
Cancel		Yes			

Confirm deleting measured value with { Yes } or abort with { Cancel }.

## ■ 5 Weighing-in of the sampels

### 3 Application prepSTATION settings

- Hold «MENU» to switch the home screen.
- Switch the icon „prepSTATION“ by pressing {▲} .
- Press shortly «MENU» to switch the context menu.



#### List write-protect:

Protection of the samples list enabled/disabled

#### Mode:

Mode for taring and weighing of the samples

#### CheckWeigher: On / Off

CheckWeigher enabled/disabled

#### Min.sample weight:

Displays minimal sample weight according to current tare range

#### Soft keys:

The utility Soft keys allows you to assign functions to soft keys.

#### Info fields:

Available info fields (quadrants) for displaying information on the info pages

#### Protocol:

General settings for the protocol/printout

#### Properties:

Display and printout of all configuration settings

### 5.1.2 Setting Check-Weigher

Press {**CheckWeigh**} key to open CheckWeigher screen.

The CheckWeigher is to check each measurement for its agreement with a defined reference value, plus/minus

allowable deviations. In the display the „check weigher info“ is active and indicates if the measured value lies within the specified tolerances TO and TU.

prepSTATION - Weighing In - CheckWeigher	
CheckWeigher	On
Nominal	5.0000 g
TO	6.0000 g
TU	4.0000 g
Limit type	Weight
Acoustic signal	Off
ESC	↑
	↓
	↵

**CheckWeigher:** On, Off

CheckWeigher enabled/disabled

**Nominal:** 5.0000 g

Nominal weight

**TO:** 6.0000 g (or 2.5%)

Over limit according to the application as weight in the basic unit, in percent or in pieces

**TU:** 4.0000 g (or 2.5%)

Under limit according to the application as weight in the basic unit, in percent or in pieces

**Limit type:** Percent, Weight, Pieces

Limits TO/TU according to the application as weight in the basic unit, in percent or in pieces

**Acoustic signal:** On, Off

Acoustic signal for acoustic indication

For detailed information about the CheckWeigher Application refer to EP 360 user manual (12.2.1 Power Function: CheckWeigher).

## ■ 6 Preparation of the sample list

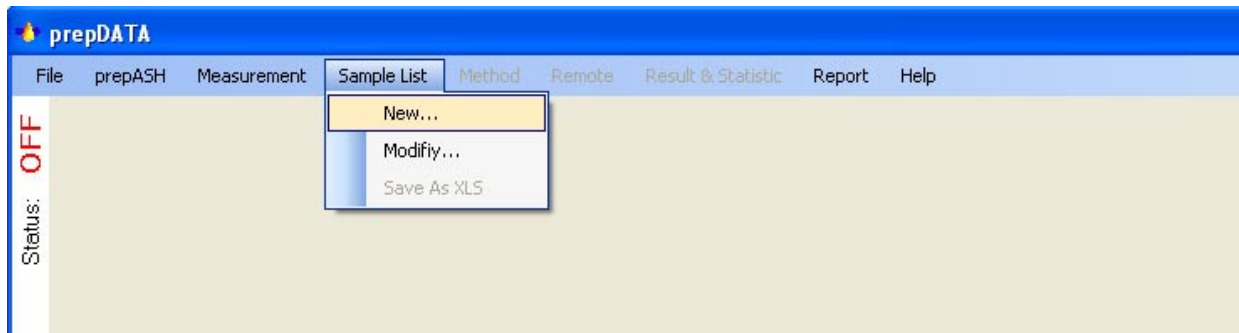
# 6 Preparation of the sample list

## 6.1 Create/Open a sample list

Start prepDATA program

5.1.1 Create new sample list.

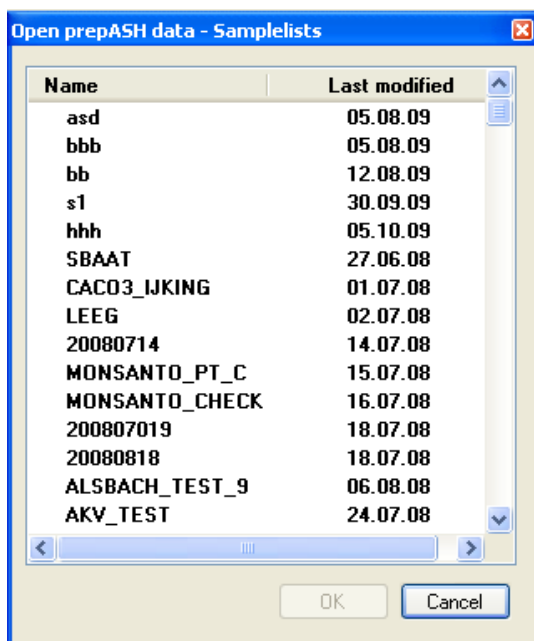
To create new samples list press on Menu "Sample List" and choose "New..."



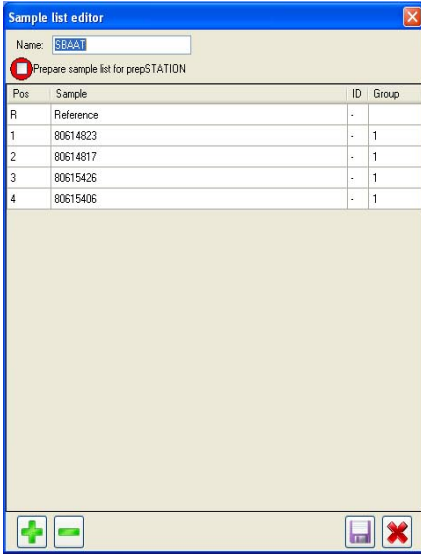
Enter the name of the sample list and names for all the samples.  
Enter the ID for each sample and group your samples, if necessary.  
You can add and delete sample position with "+" and "-".

Save your sample list pressing "Save".  
"Sample list saved on the prepASH".

5.1.2 Select "Open..." to open a sample list from the connected prepASH.



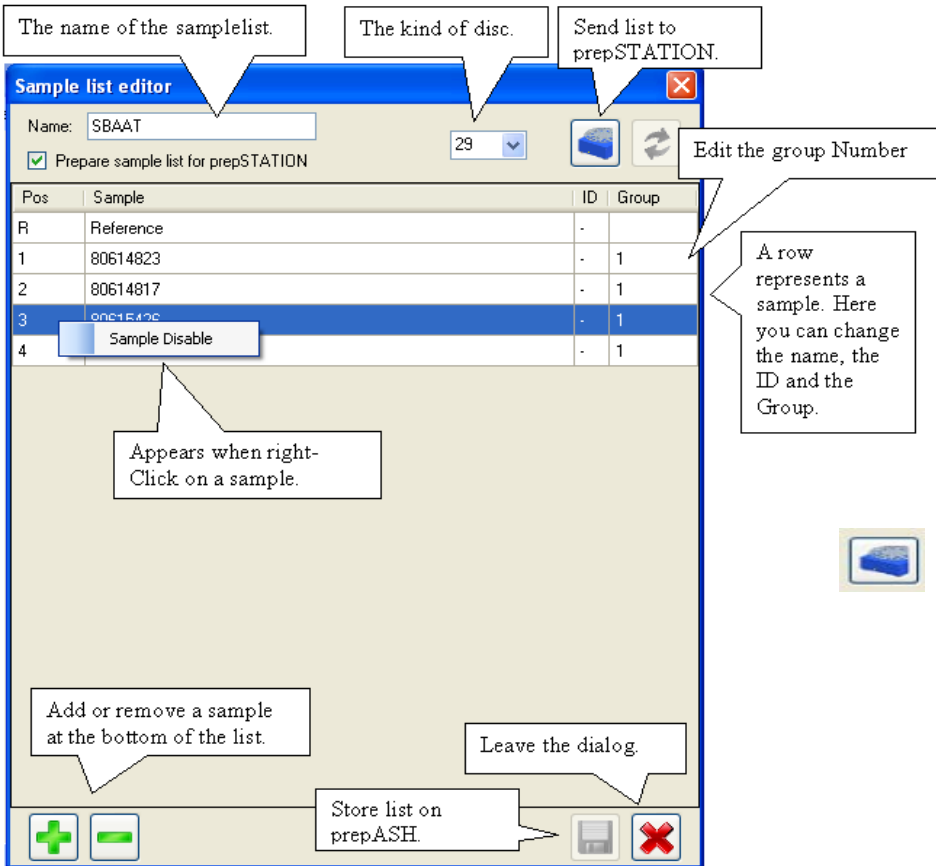
"Open prepASHData – Sample List" Window will appear.



## 6.2 Editing a sample list

Open the sample list.

You can edit the sample list as shown on the picture below.

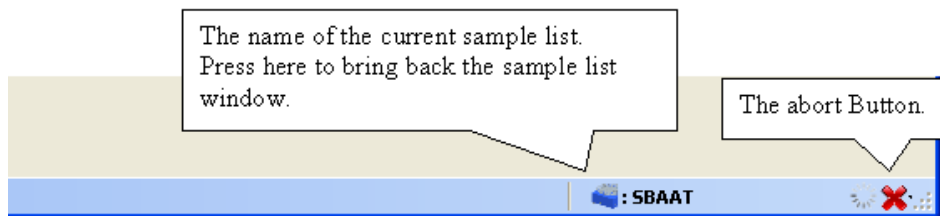




## ■ 6 Preparation of the sample list

### 6.3 Send the Sample list to the prepSTATION

1. When the sample list is ready press the send button to send to the balance
2. The sample list window closes and at the right bottom corner appears the prepSTATION Information.



### 6.4 Monitoring a current weighing-in progress

If a sample list was sent to the prepSTATION balance you have the possibility to monitor the weighing-in progress.  
For this press "i".

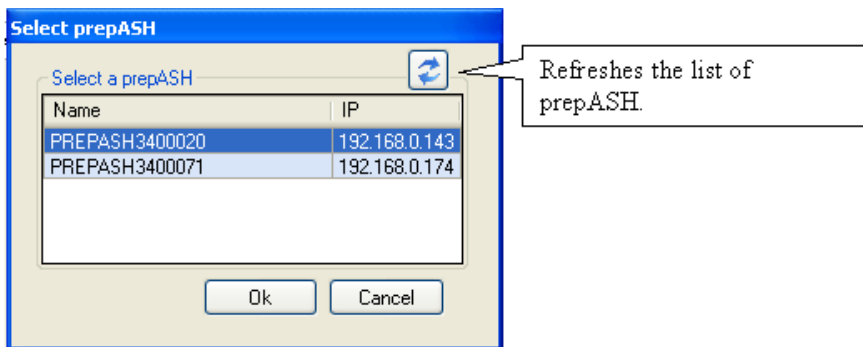
### 6.5 Saving the Sample list

If the weighing-in process on the balance was finished properly, the window will appear again in the prep-DATA. The store button is active.

1. Press the store button to save the sample list.



2. In the new window select the prepASH you like to store the Sample list. And press "OK".



### 6.6 Error Messages

#### 6.6.1 No Sample list on prepSTATION. Try again.

prepDATA tries to read a sample list from the prepSTATION with no sample list stored.

#### 6.6.2 Weighing-in was aborted by user.

Weighing-in Process was aborted by user. Cancel or abort was pressed.

#### 6.6.3 prepSTATION Application doesn't run on prepSTATION. Start Application, then re-try.

prepDATA tries to send a sample list, but the prepSTATION Application on the balance is not running.

#### 6.6.4 Sending Sample list to prepSTATION failed.

An Error occurred while trying to send a sample list to the prepSTATION. For more Information read the additional text.

**6.6.5 The Reference sample is missing. Cannot read a Sample list.**

When reading the sample list from the prepSTATION, the "Reference" Sample was not transmitted. This result in a incomplete sample list. Current task is aborted.

**6.6.6 Error when transmitting Line [Number], Name or state**

Communication Error when sending a sample to the prepSTATION.  
Possibly a Acknowledge Error.

**6.6.7 Could not create directory, to store Weighing-in Sample list.**

The prepDATA cannot create a necessary directory to store the WeightIn sample list.