

# beaufort<sup>®</sup>

## Range

### Advanced Plus

## Residential Casement

Residential Casements are available in a wide range of styles and designs including top, side and bottom hung.

[www.blyweertbeaufort.com](http://www.blyweertbeaufort.com)





## Advanced Plus Residential Casement

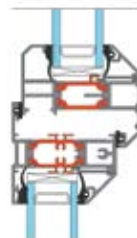
Residential Casements are available in a wide range of styles and designs including top, side and bottom hung. Windows can be made to project in or out and to suit a wide variety of applications.

### Design Features

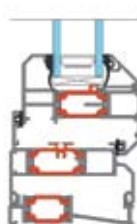
- Internally or externally glazed options
- Flat, chamfered or Ovolo details to achieve traditional or contemporary appearances
- 58mm or 70mm frame depth to accommodate varying types of applications
- Double beaded option allow for internal glazing without the use of dummy vents
- Integrated deep head profiles for ease of trickle ventilation
- Unique polyamide thermal break design to improve thermal performance



Head Detail



Vent / Transom Detail



Sill Detail



## Sizing

Minimum Height	Maximum Height
350mm	1500mm

Minimum Width	Maximum Width
350mm	1250mm

Maximum Sash Weight
50kgs**

Variations
<p>Sash size and operation will depend on hardware used.</p> <p>Sash heights, widths and weights are dependent on style and design.</p> <p>**The sizes detailed above are for guidance only.</p> <p>Please contact our Technical Office for further details</p>

## Options

- Accommodates 24mm - 44mm DGU's for thermal and acoustic performance
- Double beaded option allow for internal glazing without the use of dummy vents
- Dedicated fixing straps for ease of installation
- Full range of customisable hardware available
- Available in single and dual colour options including metallic finishes

## Performance

Advanced Plus Residential Casement provides you with the very highest in performance. This system boasts an array of accreditation and performance criteria.

- U Values as low as 1.3w/m<sup>2</sup> K (DG Unit)
- Window Energy Rating 'A' (DG Unit)
- Level 4 - Code for Sustainable Homes
- Secured By Design
- Kitemark to BS4873
- Kitemark to BS7950
- BBA Accredited

## Applications

The residential casement range is flexible and versatile and can be specified for a range of applications including:

- New build or refurbishment projects
- Domestic and light commercial
- Residential and social housing
- Low, medium and high rise
- Conservation & Heritage Areas
- Listed & Period Buildings
- Conservatory walling



**Blyweert Beaufort Aluminium Limited**  
Imperial Park | Celtic Way | Newport | NP10 8BE

**Tel: 01633 29 40 40**  
**Fax: 01633 29 40 41**  
**Email: [info@blyweertbeaufort.com](mailto:info@blyweertbeaufort.com)**

**[www.blyweertbeaufort.com](http://www.blyweertbeaufort.com)**

