



Front Elevation

Plot 3

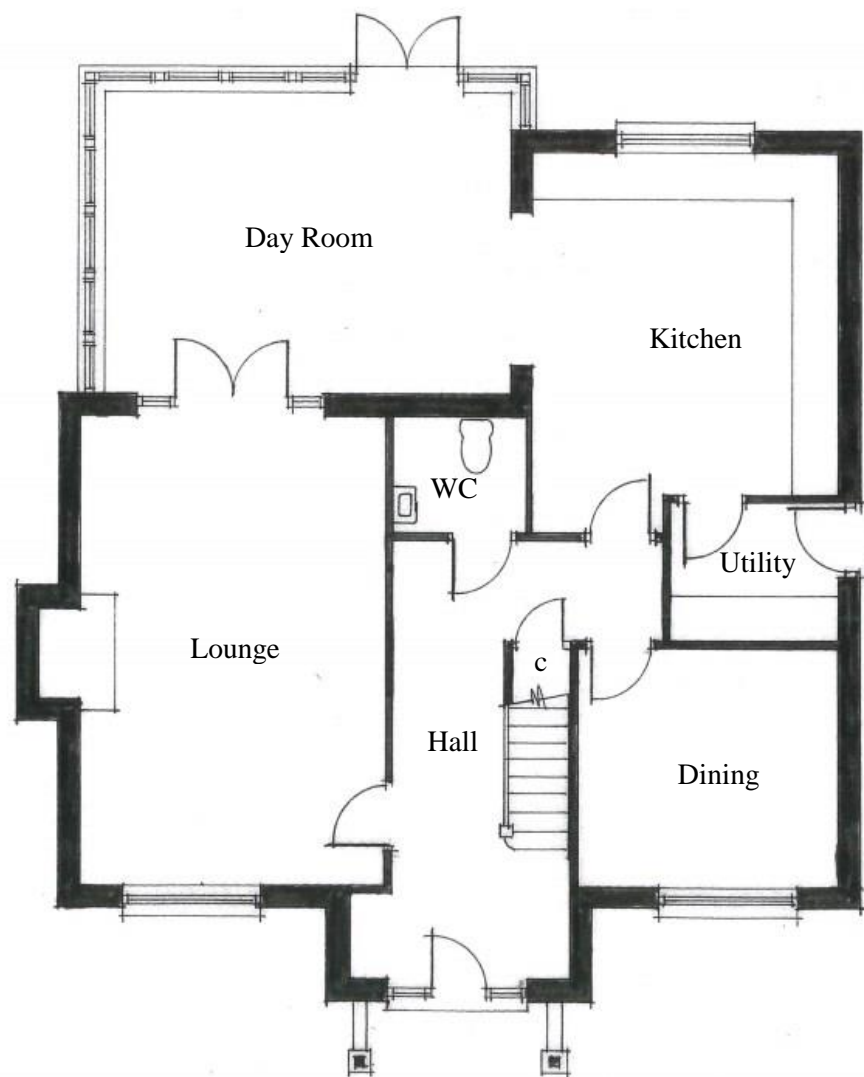
Ground Floor

Day Room -	5.21m x 3.88m (17'-1" x 12'-8")
Dining -	3.35m x 3.15m (11' x 10'-4")
Kitchen -	3.95m x 4.35m (12'-11" x 14'-6")
Lounge -	3.95m x 6.1m (12'-11" x 20')
Utility -	2.15m x 1.75m (7' x 5'-8")
WC -	1.65m x 1.45m (5'-5" x 4'-9")

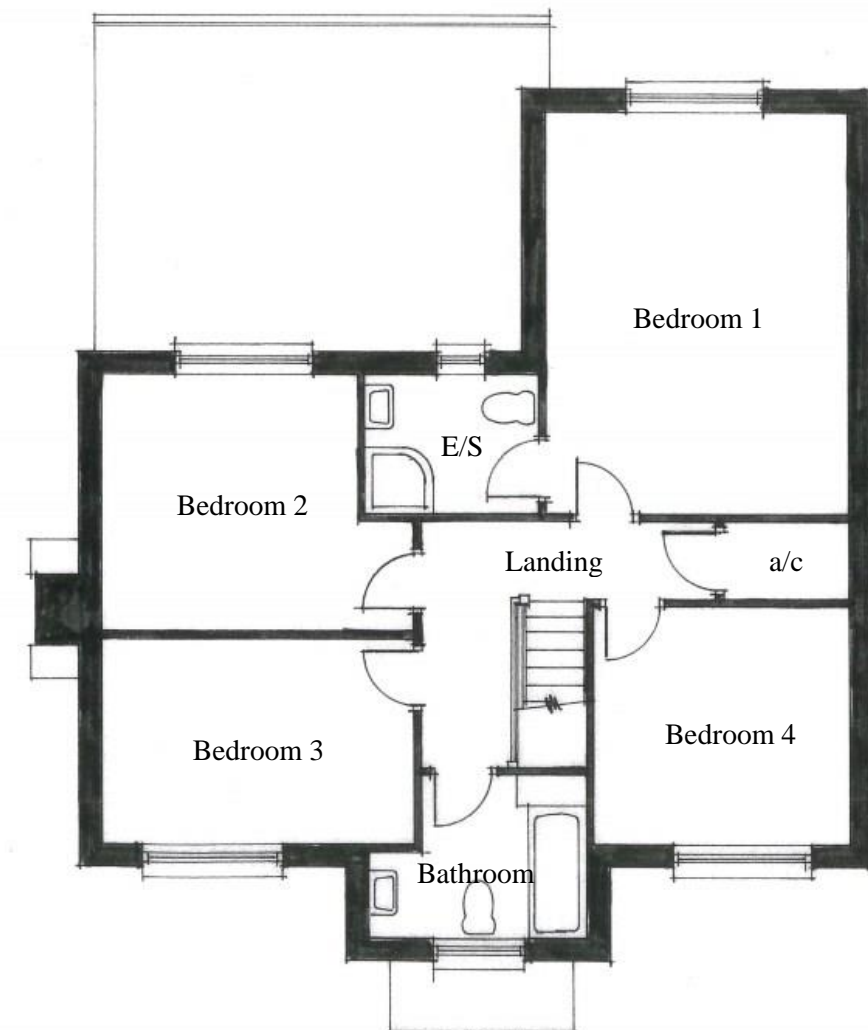
First Floor

Bathroom -	2.85m x 2.05m (9'-4" x 6'-8")
Bedroom 1 -	3.95m x 5.05m (12'-11" x 16'-6")
Bedroom 2 -	3.35m x 3.35m (10'-6" x 17'-6")
Bedroom 3 -	4.05m x 2.6m (11'-3" x 9'-8")
Bedroom 4 -	3.35m x 3.15m (11' x 10'-4")
En-suite -	2.25m x 1.6m (7'-4" x 5'-3")

Total Area- 179m² (1,927ft²)



Ground Floor Layout



First Floor Layout

