

Belisha Beacons

Mains Powered, Aluminium Anti-Vandal Gallery & UV Stabilised Amber Globe



AmberGlo4 - Part No. BG2-A/LED2-PW/DPFI/ZC-3

- Aluminium Anti-Vandal Gallery & UV Stabilised Polyethylene Amber Globe - Rated IP54
- 4w 230v Bright White LED Beacon, Pre-Wired with 4.0m x 2 Core flex (also available as BC22 fitting - see below)
- Double Pole Fused Isolator (Cut-Out)
- 3m above ground Widebase Column complete with access door, back-board and tri-head lock and key. Tough polyester Powder Coat finish in Black with 3 No. 300mm Reflective White Bands.

AmberGlo8 - Part No. BG2-A/LED3-PW/DPFI/ZC-3

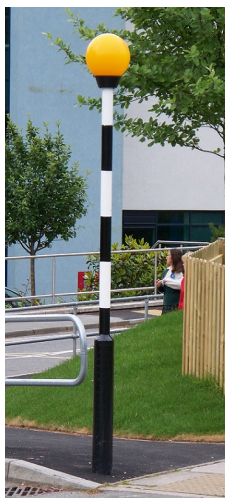
- Aluminium Anti-Vandal Gallery & UV Stabilised Polyethylene Amber Globe
- 8w 230v Extra Bright White LED Beacon, Pre-Wired with 4.0m x 2 Core flex (also available as BC22 fitting - see below)
- Double Pole Fused Isolator (Cut-Out)
- 3m above ground Widebase Column complete with access door, back-board and tri-head lock and key. Tough polyester Powder Coat finish in Black with 3 No. 300mm Reflective White Bands.

CE and EMC compliant

LED2-BC - 4w 230v LED Beacon with BC22 Bayonet Cap fitting

LED3-BC - 8w 230v LED Beacon with BC22 Bayonet Cap fitting

Available to purchase as a complete product ready to install or in it's componant parts to repair damaged or update existing units.



LOW CALL: 0333 666 2122
Tel : 01458 274017 • Fax : 01458 274145
email : info@fisherandcompany.co.uk
www.fisherandcompany.co.uk
www.feederpillars.com

1 - 4 Cary Court
Somerton Business Park
Somerton • Somerset
TA11 6SB • England

BLUE-1

LED Belisha Spotlight

Low energy, vandal resistant, low maintenance



Lumos4 - Part No. SL4W

Designed by us specifically for mains powered Belisha Beacons, these high visibility 4 watt LED Spotlights use much less power whilst still delivering a bright, white light making them very cost efficient when compared to conventional spot lighting applications.

Specifications

- 2 year guarantee
- 60% saving on running costs over 5 years compared to an incandescent light
- Weathproofing to IP54
- Built in photo-electric cell for operating during the hours of darkness
- Over 50,000 hours use before replacement required
- Up to 5 years maintenance free
- UMSUG charge code 40 0004 0009 100
- Ideal where ambient street lighting level is low or in off street locations such as car parks

Lumos3 - Part No. SL3W

These 3w LED Spotlights are made specially to suit our Solar powered Belisha Beacons to help illuminate people when crossing the road between the Beacons.

The use of push button technology coupled with a timer is ideal for Solar Belisha Beacons so that the Spotlights are in use only when using the crossing, to preserve the battery power of the Solar Belisha Beacons.

Specifications

- 2 year guarantee
- 60% saving on running costs over 5 years compared to an incandescent light
- Weathproofing to IP54
- Over 50,000 hours use before replacement required
- Up to 5 years maintenance free
- UMSUG charge code 40 0004 0009 100
- Ideal where ambient street lighting level is low or in off street locations such as car parks

CE and EMC compliant



LOW CALL: 0333 666 2122
Tel : 01458 274017 • Fax : 01458 274145
email : info@fisherandcompany.co.uk
www.fisherandcompany.co.uk
www.feederpillars.com

1 - 4 Cary Court
Somerton Business Park
Somerton • Somerset
TA11 6SB • England

BLUE-2

4w & 8w LED Flashing Units

230v Pre-Wired or BC22 Bayonet Cap Fitting

LED2 - Part No. LED2-PW or LED2-BC

- Consumes only 4 watts per hour of power 220v/240v AC supply
- Typical running cost with electricity charge of 0.085 per KW is £2.98 per annum
- Carbon emissions per unit equal to 0.019 metric tonnes per year compared to a standard 60W lamp which uses over 0.525 tonnes per year
- Can be retrofitted to any column in 20 minutes
- 50,000 hours life expectancy
- Our LED Belisha Beacon has a built-in flashing unit requiring no external flash switch
- 6 No. LEDs produce 630 lumens
- UMSUG code 79 46 007 000 100
- Available Pre-Wired, ready to fit (LED2-PW) or with Bayonet Cap (BC22) fitting or Edison Screw (ES27) fitting (LED2-BC)



LED3 - Part No. LED3-PW or LED3-BC

- Consumes only 8 watts per hour of power 220v/240v AC supply
- Typical running cost with electricity charge of 0.085 per KW is £6.00 per annum
- Carbon emissions per unit equal to 0.038 metric tonnes per year compared to a standard 60W lamp which uses over 0.525 tonnes per year
- Can be retrofitted to any column in 20 minutes
- 50,000 hours life expectancy
- Our LED Belisha Beacon has a built-in flashing unit requiring no external flash switch
- 12 No. LEDs produce 1400 lumens
- UMSUG code 79 46 008 002 100
- Available Pre-Wired, ready to fit (LED3-PW) or with Bayonet Cap (BC22) fitting or Edison Screw (ES27) fitting (LED3-PW)



CE and EMC compliant



LOW CALL: 0333 666 2122
Tel : 01458 274017 • Fax : 01458 274145
email : info@fisherandcompany.co.uk
www.fisherandcompany.co.uk
www.feederpillars.com

1 - 4 Cary Court
Somerton Business Park
Somerton • Somerset
TA11 6SB • England

BLUE-3

Illuminated Pedestrian Beacon

Vandal and weather resistant, all LED, Total 30w

Featuring our unique aluminium extrusion which provides excellent vandal resistance, and weatherproofing to IP54, this innovative product is low maintenance and easy to install. Fitted with LED technology providing bright light with low power consumption of just 30W in total.

OlympiadIPB - Part No. IPB/OLYMPIAD



Specification

- 8w extra bright white LED Flashing Beacon
- 6 sets of bright white LEDs illuminating opposing sides facing traffic – total 21w
- Carbon emission of just 0.143 metric tonnes per unit per annum
- 3m column as standard with choice of Base Options - 600mm Root or Flange Mount
- 300mm UV Stabilised polyethylene Amber Globe
- IP54 Anti-Vandal Aluminium Gallery secured to column with 3No. M8 Stainless Steel security hex-pin screws
- Vandal resistant and weatherproof polycarbonate lens covering column LEDs
- Robust anti-fade black powder coat finish to column with 3No. 300mm reflective white bands
- Flash Rate and Luminance fully compliant to BS 8442:2015
- Provides years of virtually maintenance free, efficient operation
- Saves power and money compared to traditional 60w bulbs through energy efficiency and low maintenance
- UMSUG Code 79 46 030 001 100



We deliver this product to you in 2 sections for ease of installation and set up:-

1. Illuminated Column - Gallery & Amber Globe
Pre-Wired with *FEMALE* Push-Fit connectors
2. Base Section - either Flange or Root Mount
Fitted with Double Pole Fused Isolator (Cut-Out) and pre-wired to LED Driver with *MALE* Push-Fit Connectors

Supplying to you in this way speeds up the installation process, saves on transport costs *and* makes the wiring a very quick and simple task – saving you time and money on site.

CE and EMC compliant



LOW CALL: 0333 666 2122
Tel : 01458 274017 • Fax : 01458 274145
email : info@fisherandcompany.co.uk
www.fisherandcompany.co.uk
www.feederpillars.com

1 - 4 Cary Court
Somerton Business Park
Somerton • Somerset
TA11 6SB • England

BLUE-4

Solar Belisha Beacon

Fully Highways compliant, programmable and winter tested



SolarisV2 - Part.No. FSBB2016V2

Fitted with our IP54 Through Belisha Beacon, consisting of our Aluminium Anti-Vandal Gallery and UV stabilised Amber Polyethylene Globe. The globe can be mounted at any height. Inside the Globe is a PCB with 6 x 1 watt (total 4w) LED light cluster producing a bright, white, flashing beacon.

For safe and easy maintenance, our purpose made 4.0m Zebra Column houses an IP68 control box containing a state of the art Micro-Processor consisting of:- Flasher Control, Solar Controller, Radio Transmitter, Battery Monitoring Device and Programmable On/Off Timer function.

Specifications

- 12 x 1w LED cluster. 6 for 4w flashing beacon and 6 in reserve - so even if an LED fails the Beacon will continue to flash using the reaserve set.
- 2 x 20w Photovoltaic panels on aluminium angle adjustable bracket
- IP54 300mm Amber Polyethylene Globe and Aluminium Anti-vandal Gallery
- 2 x 12v 14Ah batteries providing 28Ah
- Flash Rate & Luminance fully comply to BS 8442:2006
- Fully compliant to EMC & CE Standards
- 14 days autonomy and Auto dimming at night to save power
- 4.0m x 76mm (with 168mm Root base housing Batteries & Controller) Galvanized purpose made Column finished in a tough polyester powder coat finish in Ral 9005 Black gloss with 3 No. Reflective/translucent white vinyl bands. Can be supplied as a Flange Base Mount.
- DST - Daylight Saving Time function for UK, Europe, USA, Australia and New Zealand
- Full on site battery monitoring via LCD Display

Also Available as Post Top Mount - Suitable to retro fit to existing 76dia posts or columns.

Optional Extras

- 3 watt LED Spotlight with 'Push-On' button control with radio link between beacons and timed off function
- Programmable On/Off time function ideal for business hours operation only, off peak situations and shop opening hours, etc...
- Beacon flashing controlled by 'Push-on' button with radio link between beacons and timed 'Off' function. Ideal for Car Parks and non Highways situations.

SolarisPTM - Part.No. FSBB2016PTM



Full after sales support
5 Year Extended
Warranty available



LOW CALL: 0333 666 2122
Tel : 01458 274017 • Fax : 01458 274145
email : info@fisherandcompany.co.uk
www.fisherandcompany.co.uk
www.feederpillars.com

1 - 4 Cary Court
Somerton Business Park
Somerton • Somerset
TA11 6SB • England

BLUE-5

Solar Refuge Beacon

Self sufficient, durable and cost effective



PolarisV2 - Part.No. FSRB2016V2

Our Solar Refuge Beacon is made to the same high standards as our Solar Belisha Beacon in our Somerset factory to IP54.

Easy to install and maintain, every aspect of our products is designed and made with our customers in mind. Contractors and electricians prefer our products because of their quality build, excellent finish and simplicity of installation.

Specifications

- 12 x 1w LED cluster. 6 for 6w beacon and 6 in reserve - so even if an LED fails the Beacon will continue to work using the reserve set
- Operates using PEC to save battery during daylight hours
- 2 x 20w Photovoltaic panels
- IP54 300mm Pearl Polyethylene Globe and Aluminium Anti-vandal Gallery
- 2 x 12v 14Ah batteries providing 28Ah
- Fully Highway, EMC & CE compliant
- 14 days autonomy
- 5.0m x 76mm (with 168mm base housing Batteries & Controller) Galvanized purpose made 2 part Column finished in a tough polyester powder coat finish in Traffic Grey 'A' gloss with 2 No.reflective/translucent white vinyl bands
- DST - Daylight Saving Time function for UK, Europe, USA, Australia and New Zealand
- Full on site battery monitoring via LCD Display
- Programmable On/Off time function, ideal for business hours operation only, off peak situations and shop opening hours, etc... ideal for private, supermarket and shopping centre car parks.



Also Available as Post Top Mount

Suitable to retro fit to existing 76dia posts or columns

PolarisPTM - Part.No. FSRB2016PTM



Full after sales support - 5 Year Extended Warranty available



LOW CALL: 0333 666 2122
Tel : 01458 274017 • Fax : 01458 274145
email : info@fisherandcompany.co.uk
www.fisherandcompany.co.uk
www.feederpillars.com

1 - 4 Cary Court
Somerton Business Park
Somerton • Somerset
TA11 6SB • England

BLUE-6

Refuge Beacons

High quality, durable and affordable



Lodestar - Part.No.BG2-P/LED3-RF

One of the brightest Refuge Beacons on the market today. Comes complete with incorporated Photoelectric Cell, allowing the Refuge Unit to have an off function during daylight hours giving even further running cost savings, and weatherproofed to IP54.

High visibility with just 12 watts

Specifications

- Consuming only 12 watts of power per hour - 12 x 1 watt very bright white LED's
- A massive 1400 lumens
- 220v/240v AC supply
- Typical running cost based on Electricity charge of £0.085 per kwh is £9.00 pa
- Carbon per unit = 0.057 metric tonnes pa
- Supplied pre-wired with 5.0m of 2 core flex *or* with a standard 22mm bayonet cap (BC22)
- Can be retrofitted to any column in 20 mins
- Also available as 24v version
- UMSUG code: 40 0012 0013 100

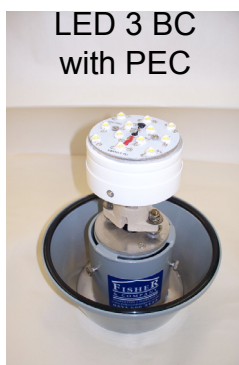


LED Beacon available as a retro-fit item, to replace halogen or other type bulbs, in either Pre-Wired or BC22 fittings.

Part.No.LED3-RF-PW



Part.No.LED3-RF-BC-PEC



Part.No.LED3-RF-PW-PEC



CE and EMC compliant



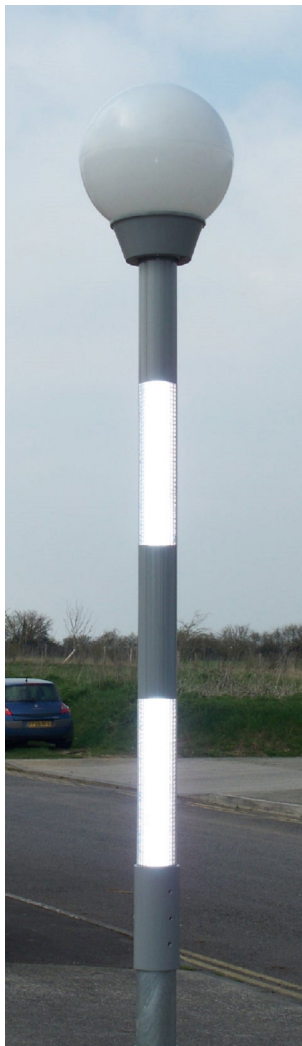
LOW CALL: 0333 666 2122
Tel : 01458 274017 • Fax : 01458 274145
email : info@fisherandcompany.co.uk
www.fisherandcompany.co.uk
www.feederpillars.com

1 - 4 Cary Court
Somerton Business Park
Somerton • Somerset
TA11 6SB • England

BLUE-7

Illuminated Refuge Conversion

Fast and simple upgrade kit



Sentinel26 - Part.No.RBCU-26

The Illuminated Refuge Beacon Conversion Unit has been designed to retro-fit to existing 76mm diameter Refuge Columns. This is an easy way to vastly upgrade an existing standard Refuge Beacon giving superior illumination and making the refuge much more visible to road users and improving safety.

Simple to install - Cut 1.25m off of the existing column, drop the cables down and slide over the new Illuminated Refuge Beacon Conversion Unit and secure with the locking screws.

The column section is constructed from strong, but lightweight aluminium extrusion with weather resistant polycarbonate lenses and is powder coated Traffic Grey.

It is internally illuminated in 2 double sided sections with 4 sets of LED's with total power consumption of approx. 14 watts. and comes with an IP67 LED Driver and with 2 No. highly reflective, translucent Bands.

The Pearl polyethylene globe is fixed to the Aluminium Anti-Vandal Gallery with 3no. M8 stainless steel security screws.

The globe houses our latest 12 watt LED Refuge Beacon (LED3-RF)

CE and EMC compliant



Specifications

- 26 watts power consumption
- Carbon emissions per unit = 0.123 metric tonnes per annum
- 300mm Pearl Polyethylene Globe
- 1.25m high as standard with 76mm socket
- Tough polyester powder coat finish in Traffic Grey gloss
- 2x Reflective/translucent white vinyl bands
- UMSUG Code 40 0026 0000 100



LOW CALL: 0333 666 2122
Tel : 01458 274017 • Fax : 01458 274145
email : info@fisherandcompany.co.uk
www.fisherandcompany.co.uk
www.feederpillars.com

1 - 4 Cary Court
Somerton Business Park
Somerton • Somerset
TA11 6SB • England

BLUE-8

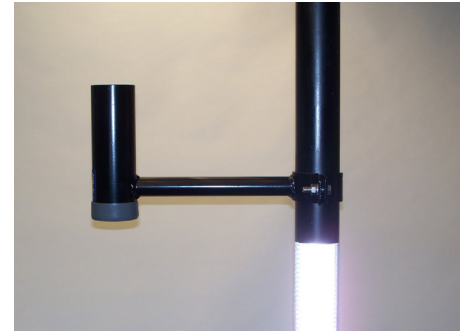
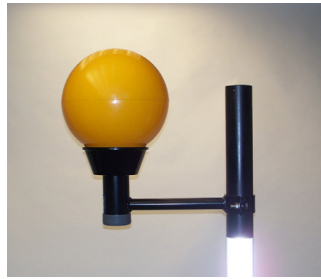
Brackets and Accessories

Excellent quality, wide range, bespoke styles and sizes

Belisha Beacon Bracket

Designed to clamp onto standard columns for the easy installation of belisha beacons requiring greater visibility.

Manufactured from mild steel and hot dipped galvanised to BS EN ISO 1461 as standard with M10 Stainless Steel fixings. Supplied with 1 grey plastic cap.

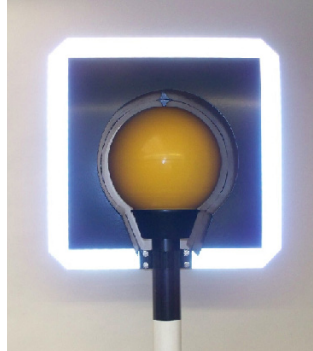


Part No.	BB1	BB2	BB3
Shaft Dia.	76	89	114
Out Reach	350	350	350
Tube Dia.	76	76	76
Tube Height	150	150	150

Courtesy Shield

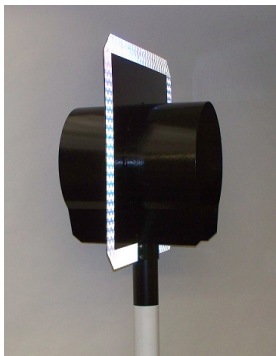


Halo Panel



Courtesy Shield & Halo Panel

The Halo Panel helps to highlight the Belisha Beacon to oncoming traffic and The Courtesy Shield hides the Beacons from the side for the benefit of nearby residents. Will fit any gallery. Manufactured from either stainless steel or galvanised steel sheet with a black polyester powder coat finish.



Courtesy Halo Combi

This Combi is both Courtesy Shield and Halo Panel to protect residents from the flashing of the Belisha Beacon and to highlight and improve the visibility of the Beacon for approaching traffic. Designed to fit our own Vandal Resistant Galleries as well as other types on the market.

Manufactured from either stainless steel or galvanised steel sheet with a black polyester powder coat finish.

Description	Part No.	Material	Globe	Height	Width	Length	Column Dia.
Courtesy Shield Galv	CS-GS	Galvanized	300	400	375	320	76
Courtesy Shield Stainless Steel	CS-SS	Stainless	300	400	375	320	76
Courtesy Panel (Halo) Galv	CP-GS-B	Galvanized	300	550	550	320	76
Courtesy Panel (Halo) Galv	CP-SS-B	Stainless	300	550	550	320	76
Courtesy Halo Combi	CPS-GS-B	Galvanized	300	550	550	320	76



LOW CALL: 0333 666 2122
 Tel : 01458 274017 • Fax : 01458 274145
 email : info@fisherandcompany.co.uk
www.fisherandcompany.co.uk
www.feederpillars.com

1 - 4 Cary Court
 Somerton Business Park
 Somerton • Somerset
 TA11 6SB • England

Amber Approach Beacon

High visibility, low maintenance LED



Designed originally for the Irish Market we have manufactured the Amber Approach Beacon to contrast our Belisha Beacon.

Consisting of four 1 watt high power amber LED's and producing a minimum of 140 lumens the Beacon can be seen well ahead of the Belisha Globe.



Specification

IP65 Housing

Extruded octagon measuring 110mm across flats and finished in Black powder coat polyester with 6mm thick polycarbonate frosted lense.

Clamp to fit 76.0mm dia. column

Dimensions(mm) 110x110x220

Illumination

4 x 1 watt Amber LED's x 35 lumens

4 watt driver

4.0m 3 core flex

Power Consumption = 4 watts

Requirements

The unit must be powered by 240v ac mains via a flash switch such as a Rotaflash. This will ensure the life expectancy of 50,000 hours.

Users

The Amber Approach Beacon is currently in operation in several local authorities in Ireland

**Anti-corrosive light weight housing - Low Energy Consumption
Modern Design**

CE and EMC compliant



LOW CALL: 0333 666 2122
Tel : 01458 274017 • Fax : 01458 274145
email : info@fisherandcompany.co.uk
www.fisherandcompany.co.uk
www.feederpillars.com

1 - 4 Cary Court
Somerton Business Park
Somerton • Somerset
TA11 6SB • England

BLUE-10