

### **Measuring a Room**

Measuring your room should be straight forward; here are some simple measuring tips below.

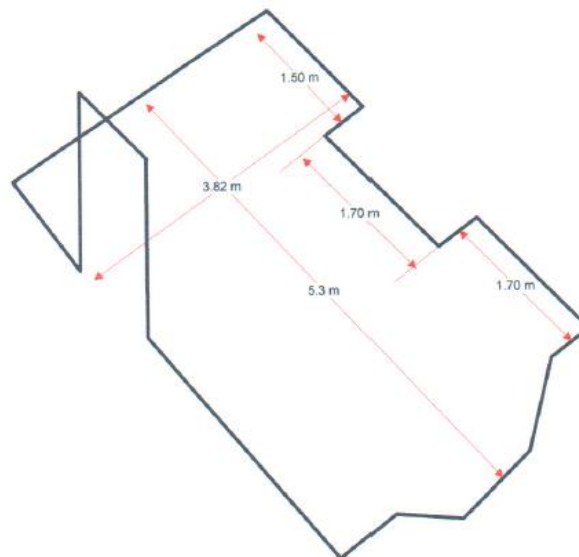
Before you start, you will need a metric tape measure, pen or pencil, paper and a calculator to hand.

Firstly draw a rough plan of the room showing all walls, now measure from the skirting board the longest part of the room, (Length) and then the widest point of the room. (Width)

(Remembering to measure into bay windows and door frames, as the Laminate should end directly under the door).

Add on an extra 5cm, to each measurement, just in case the walls run out and it also allows for cutting in when fitted then write these measurements on the plan.

### ***Example Room***



Laminate floors are sold in packs, and you will be advised of how many square metres each pack will cover.

Take the length of the room and multiply this by the width of the room to give you the total area in square metres.

For example the room above is 5.3m Long multiply this by the 3.82m width = 20.25 sq metres.

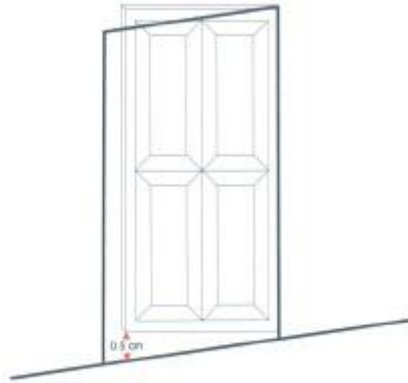
Our pack size is 1.05 sq metres, so we now need to divide the area of the room  $20.25 \div 1.05$  the square metres of Laminate in our pack = 19.29 packs.

As the Laminate is sold by the pack, you then need to round up to the nearest whole pack, so you will have to buy 20 packs (which equals 21 sq metres) enough to cover the area of the room on the plan.

## How to Measure for Laminate

---

\*Please note these are helpful tips and should not be confused as an installation guide. If in doubt we have a store network, that can offer professional help and advice, as well as measuring and fitting services.



\*Another thing to consider when replacing any floorcovering is the total thickness of the new flooring being installed.

Is it higher than what is there at present?

If it is then you need to check the clearance under any doors as these may need to be trimmed before the new flooring is laid to ensure they open and close properly.