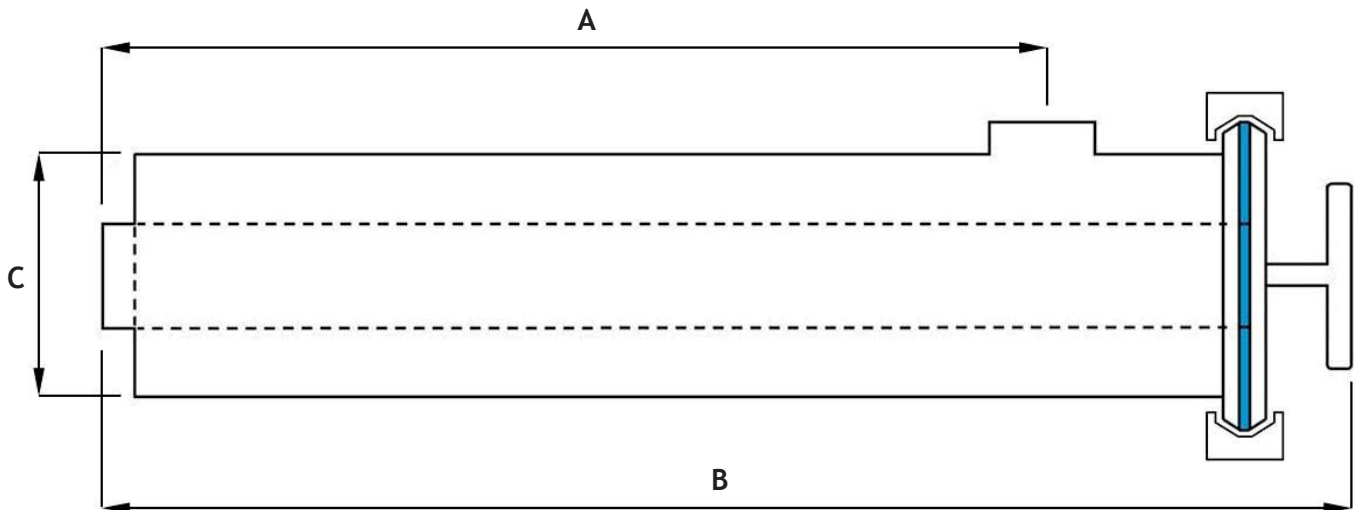




BDE (NORTHAMPTON) LTD

HYGIENIC 90 DEGREE PRODUCT STRAINER



• **90DEG PRODUCT STRAINER 316**

SIZE	1"	1.5"	2"	2.5"	3"	4"	6"
A	302.0	302.0	302.0	402.0	402.0	410.0	470.0
B	522.0	507.0	469.0	609.0	569.0	590.0	670.0
C	101.6	101.6	101.6	101.6	101.6	154.0	204.0

The 90° product strainer is designed specifically for filtration of product, and to remove potentially unwanted items in the product. The product strainer has improved flow characteristics over the Y Pattern strainer, due to its extra length.

90d PRODUCT STRAINER INFORMATION:

- Designed & Manufactured by BDE - from 316 Stainless Steel
- Pump Protection Assembly consists of: **1 x Element, 1 x Body, 1 x Single Hinged Clamp & 1 x Lipped EDPM Joint Ring.**
- To make either 1", 1.5" or 2.5" - A concentric cone will be used on a standard body.
- Standard finish - 240 Grit ID & OD - Other finishes available on request
- Can be adapted into a Y type strainer
- Shut off valves can be welded to the unit.
- Elements - We stock a wide range of perforated & wedge wire elements - See elements page (35-38)
- We strongly recommend ordering a replacement element to ease cleaning and to minimize line down time.
- ALTERNATIVE ENDS CAN BE WELDED TO CUSTOMERS SPECIFICATIONS - **CLAMP/RJT/DIN/IDF OR SMS**

Jacketed & Duplex strainers can be supplied to the customer's specification

DUE TO CONTINUOUS DEVELOPMENT & INNOVATION, WE RESERVE THE RIGHT TO CHANGE THE DESIGN/DIMENSIONS WITHOUT PRIOR NOTICE

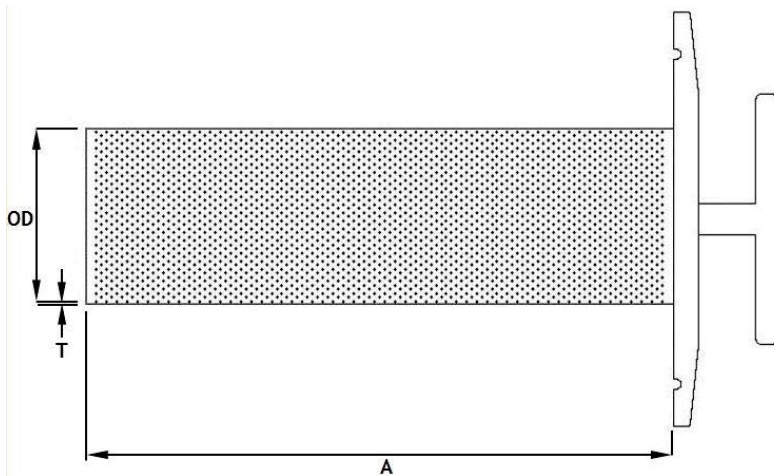
Tel: 01604 750380
Email: sales@bdeltd.co.uk

Fax: 01604 750377
www.bdeltd.co.uk

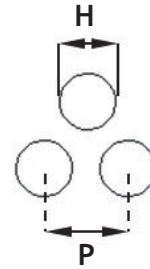


BDE (NORTHAMPTON) LTD

PRODUCT - PERFORATED ELEMENT



Perforations:



• **PRODUCT ELEMENTS - PERFORATED**

ITEM	OD	A	T	H	P	OPEN
2" PRODUCT ELEMENT - 1mm HOLE	47	400	0.80	1.0	2.0	22.7%
2" PRODUCT ELEMENT - 1.5mm HOLE	47	400	1.00	1.5	3.0	22.7%
2" PRODUCT ELEMENT - 2mm HOLE	47	400	1.00	2.0	4.0	22.7%
2" PRODUCT ELEMENT - 3mm HOLE	47	400	1.00	3.0	5.0	32.6%
2" PRODUCT ELEMENT - 4mm HOLE	47	400	1.00	4.0	6.0	40.3%
2" PRODUCT ELEMENT - 5mm HOLE	47	400	1.00	5.0	8.0	35.4%
3" PRODUCT ELEMENT - 1mm HOLE	72	502	0.80	1.0	2.00	22.7%
3" PRODUCT ELEMENT - 1.5mm HOLE	72	502	1.00	1.5	3.00	22.7%
3" PRODUCT ELEMENT - 2mm HOLE	72	502	1.00	2.0	4.00	22.7%
3" PRODUCT ELEMENT - 3mm HOLE	72	502	1.00	3.0	5.00	32.6%
3" PRODUCT ELEMENT - 5mm HOLE	72	502	1.00	5.0	8.00	40.3%
3" PRODUCT ELEMENT - 10mm HOLE	72	502	1.50	10.0	15.00	35.4%
4" PRODUCT ELEMENT - 1mm HOLE	97	525	1.00	1.0	2.00	22.7%
4" PRODUCT ELEMENT - 1.5mm HOLE	97	525	1.00	1.5	3.00	22.7%
4" PRODUCT ELEMENT - 2mm HOLE	97	525	1.00	2.0	4.00	22.7%
4" PRODUCT ELEMENT - 3mm HOLE	97	525	1.00	3.0	5.00	32.6%
4" PRODUCT ELEMENT - 10mm HOLE	97	525	1.00	10.0	15.00	35.4%
6" PRODUCT ELEMENT - 1mm HOLE	149	600	1.00	1.0	2.00	22.7%
6" PRODUCT ELEMENT - 1.5mm HOLE	149	600	1.00	1.5	3.00	22.7%
6" PRODUCT ELEMENT - 3mm HOLE	149	600	1.00	3.0	5.00	32.6%

- Manufactured by BDE - from 316 Stainless Steel
- **Element Assembly Consists of:**
1 x Perf Element, 1 x Clamp Blank
- **Round Perforation:**
Staggered Pitch @ 60 Degrees
- All Elements complete with 5mm boarder.
- Suitable for CIP & SIP systems.
- Rigid elements suitable for reverse flushing.
- Inner & outer fine mesh wrap can be supplied on request.
- **Flow:** In to Out (FITO)
- Other perforation sizes & patterns available on request.

DUE TO CONTINUOUS DEVELOPMENT & INNOVATION, WE RESERVE THE RIGHT TO CHANGE THE DESIGN/DIMENSIONS WITHOUT PRIOR NOTICE

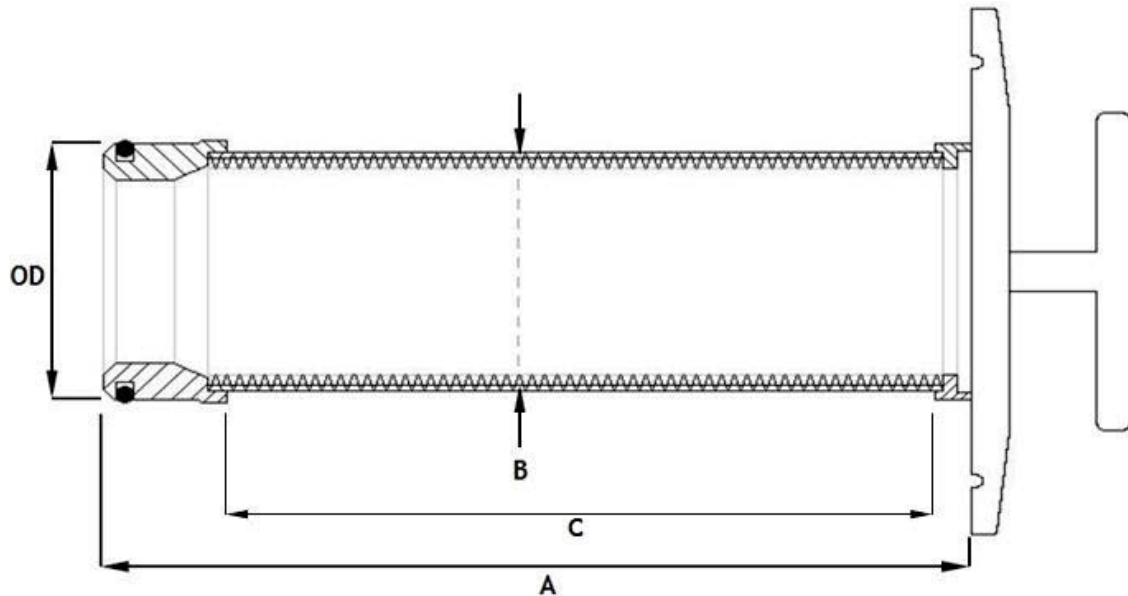
Tel: 01604 750380
Email: sales@bdeltd.co.uk

Fax: 01604 750377
www.bdeltd.co.uk



BDE (NORTHAMPTON) LTD

PRODUCT - WEDGE WIRE ELEMENT



• PRODUCT ELEMENTS - WEDGE WIRE

ITEM	OD	A	B	C	Micron	mm	OPEN AREA %
2" PRODUCT ELEMET - 50 MICRON	48	403	45	377	50	0.050	5%
2" PRODUCT ELEMENT - 100 MICRON	48	403	45	377	100	0.100	9%
2" PRODUCT ELEMENT - 150 MICRON	48	403	45	377	150	0.150	13%
2" PRODUCT ELEMENT - 250 MICRON	48	403	45	377	250	0.250	20%
2" PRODUCT ELEMENT - 400 MICRON	48	403	45	377	400	0.400	20%
2" PRODUCT ELEMENT - 500 MICRON	48	403	45	377	500	0.500	33%
2" PRODUCT ELEMENT - 750 MICRON	48	403	45	377	750	0.750	43%
2" PRODUCT ELEMENT - 1000 MICRON	48	403	45	377	1000	1.00	50%
2" PRODUCT ELEMENT - 1500 MICRON	48	403	45	377	1500	1.50	60%
2" PRODUCT ELEMENT - 3000 MICRON	48	403	45	377	3000	3.00	75%
3" PRODUCT ELEMENT - 50 MICRON	72	503	70	477	50	0.050	5%
3" PRODUCT ELEMENT - 100 MICRON	72	503	70	477	100	0.100	9%
3" PRODUCT ELEMENT - 150 MICRON	72	503	70	477	150	0.150	13%
3" PRODUCT ELEMENT - 250 MICRON	72	503	70	477	250	0.250	20%
3" PRODUCT ELEMENT - 400 MICRON	72	503	70	477	400	0.400	20%
3" PRODUCT ELEMENT - 500 MICRON	72	503	70	477	500	0.500	33%
3" PRODUCT ELEMENT - 750 MICRON	72	503	70	477	750	0.750	43%
3" PRODUCT ELEMENT - 1000 MICRON	72	503	70	477	1000	1.00	50%
3" PRODUCT ELEMENT - 1500 MICRON	72	503	70	477	1500	1.50	60%
3" PRODUCT ELEMENT - 3000 MICRON	72	503	70	477	3000	3.00	75%

- Manufactured by BDE - Entirely from 316 Stainless Steel
- **Element Assembly Consists of:**
1 x W/W Element, 1 x Clamp Blank, 1 x Element Seal (Nitrile)
- **Flow:** In to Out (FITO)
- Suitable for CIP & SIP systems.
- Rigid elements suitable for reverse flushing.
- EPDM Element seal can be supplied as an alternative.
- Other wedge wire sizes available on request.

DUE TO CONTINUOUS DEVELOPMENT & INNOVATION, WE RESERVE THE RIGHT TO CHANGE THE DESIGN/DIMENSIONS WITHOUT PRIOR NOTICE

Tel: 01604 750380
Email: sales@bdeltd.co.uk

Fax: 01604 750377
www.bdeltd.co.uk