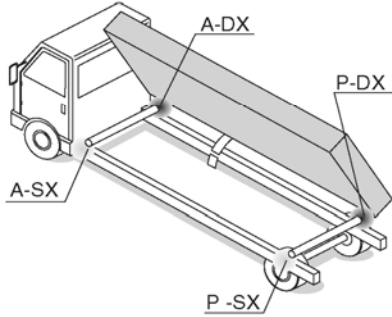


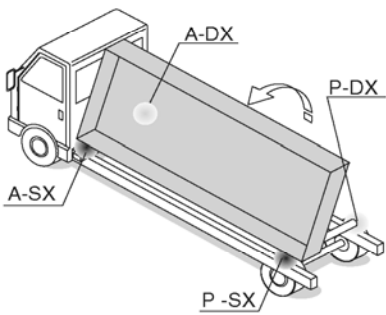
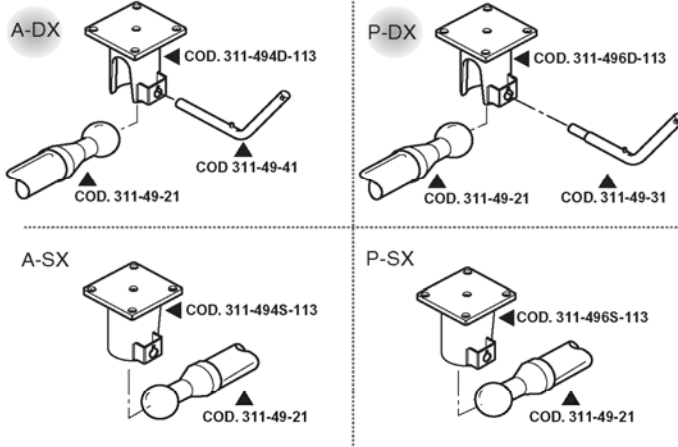


TIPPER BODY PARTS

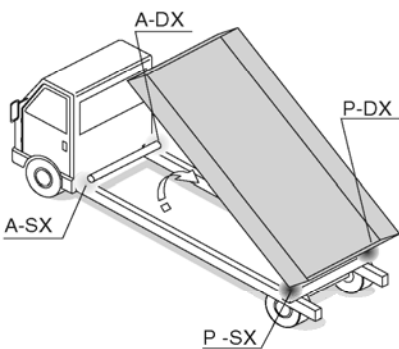
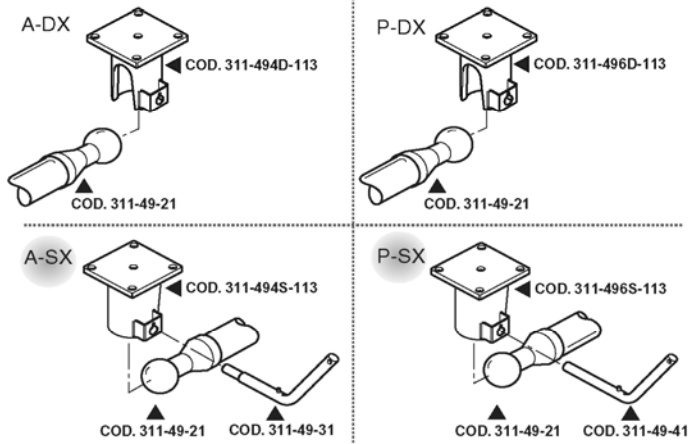




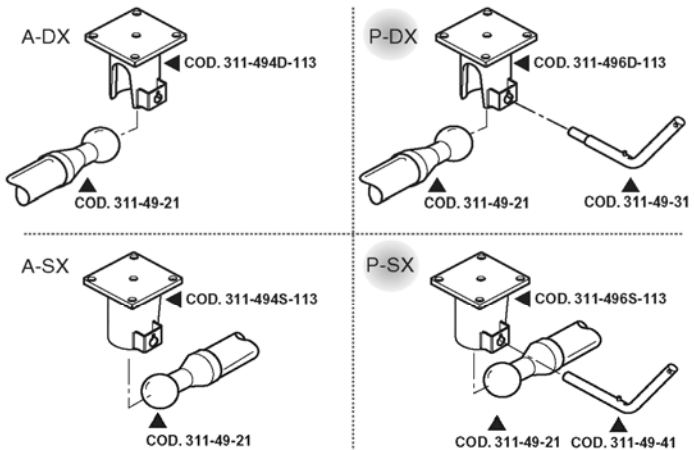
A = ANTERIORE / FRONT
P = POSTERIORE / REAR



A = ANTERIORE / FRONT
P = POSTERIORE / REAR

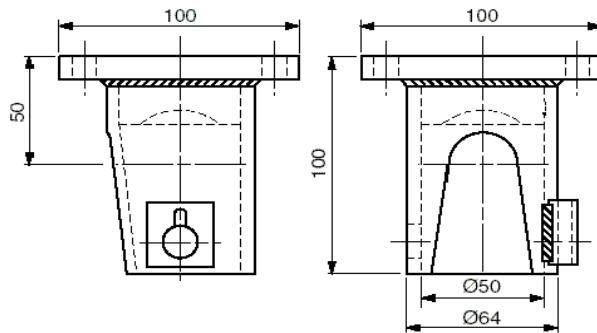


A = ANTERIORE / FRONT
P = POSTERIORE / REAR



9.1.1

THREWAY TIPPING BALL AND SOCKET UNITS Ø 49



311-49FDX-13

311-49RDX-13

311-49FSX-13

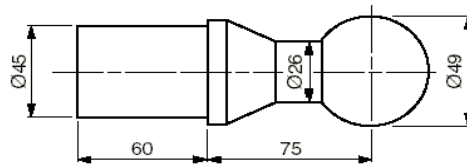
311-49RSX-13

Ø 49

311-49-21

KG 1.690

Ø 49



311-49-31

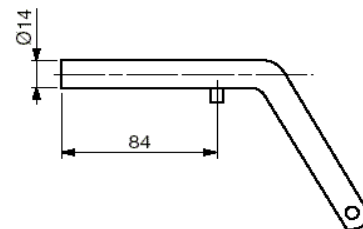
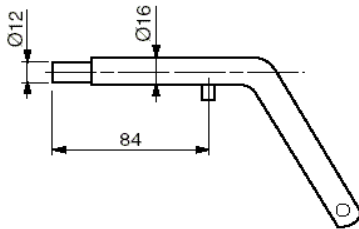
KG 0.320

Ø 16

311-49-41

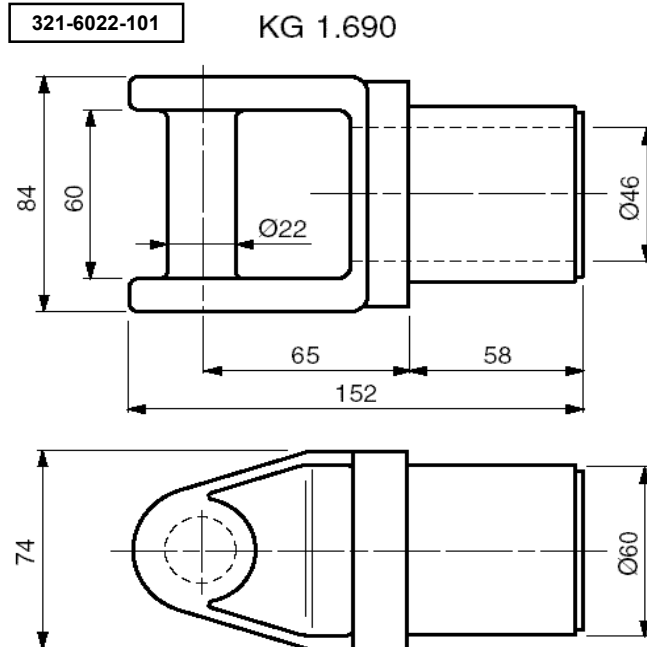
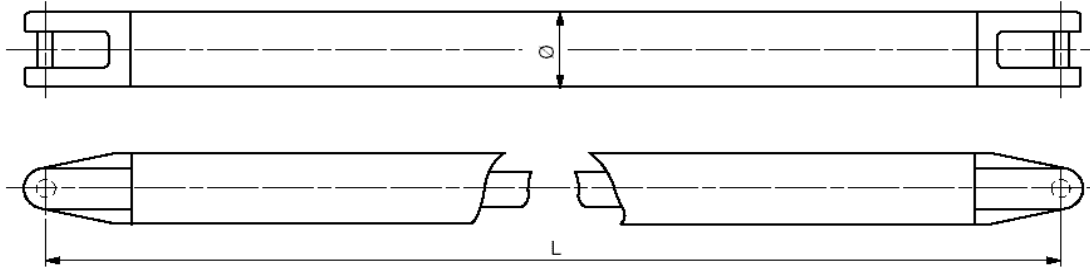
KG 0.260

Ø 14



CODE	DESCRIPTION	SURFACE	WEIGHT
311-49FDX-13	pan Ø49 mm front right	zinc plated	1,47
311-49RSX-13	pan Ø49 mm rear left	zinc plated	1,47
311-49RDX-13	pan Ø49 mm rear right	zinc plated	1,47
311-49FSX-13	pan Ø49 mm front left	zinc plated	1,47
311-49-21	sphere Ø49 mm		1,69
311-49-31	locking pin d=12/16 for ball Ø49mm		0,32
311-49-41	locking pin d=14 for ball Ø49mm		0,26

Tipping beams



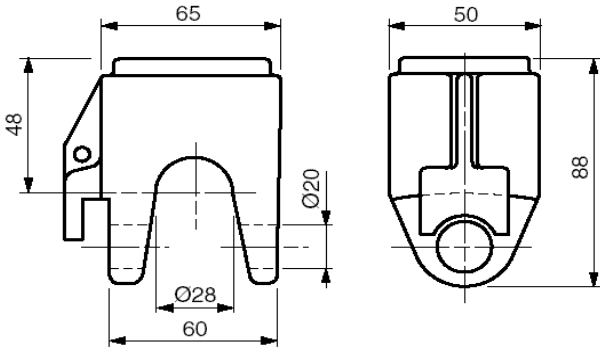
CODE	DESCRIPTION	L= mm	WEIGHT
321-180F-101	tipping beams front Ø76x10	1800	31
321-194F-101	tipping beams front Ø76x10	1940	33
321-180R-101	tipping beams rear Ø76x10	1800	41
321-194R-101	tipping beams rear Ø76x10	1940	43
321-6022-101	fork Ø60		1,69

9.2.1

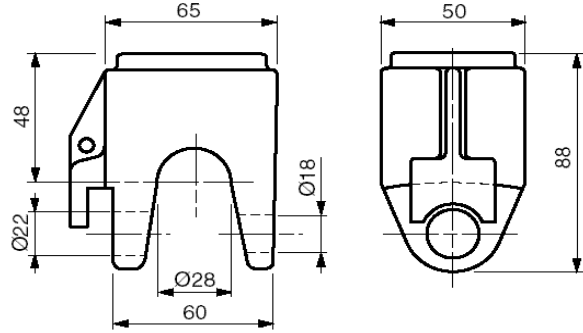
TIPPING BEAMS WITH FORK ASSEMBLY Ø76x10; 2,5-5,5 t



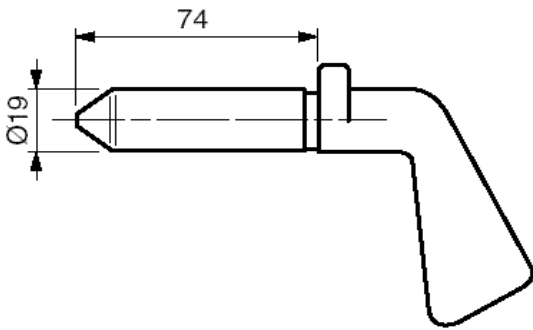
321-22-201 KG 1.260



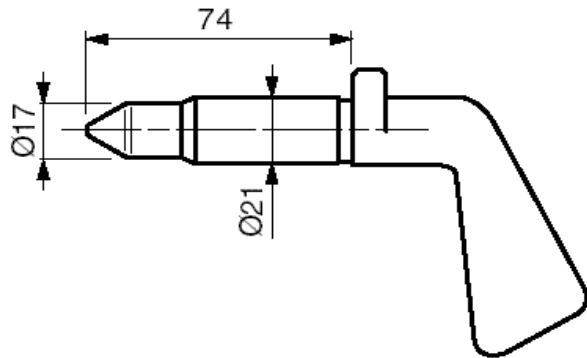
321-22-401 KG 1.260



321-22-301 KG 0.390

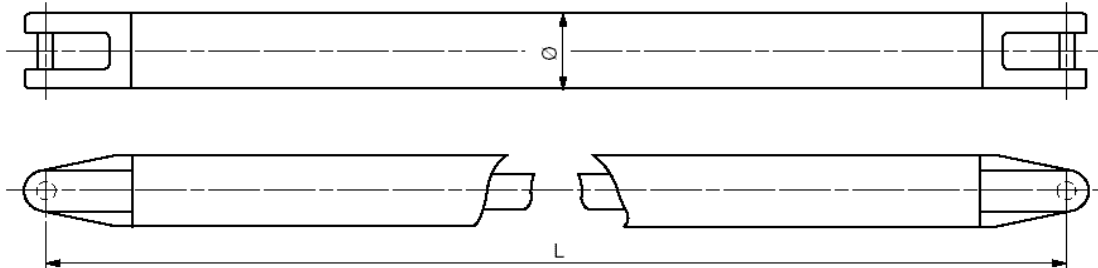


321-22-501 KG 0.390



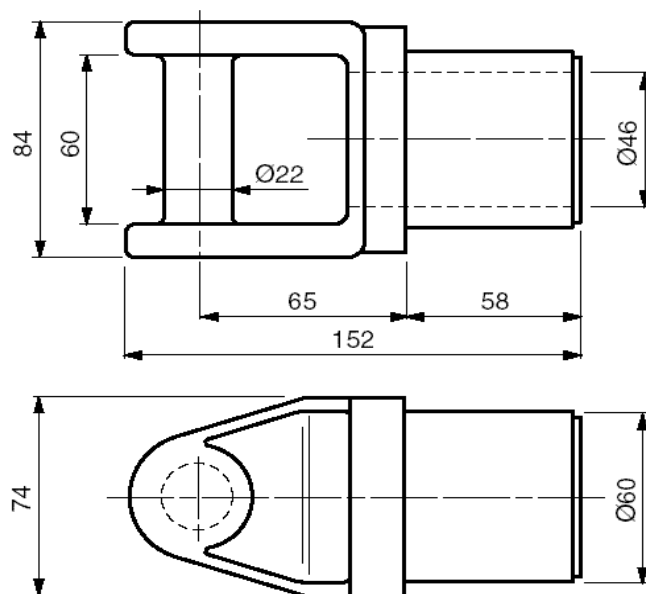
CODE	DESCRIPTION	WEIGHT
321-22-201	support (5,5t; d=20)	1,26
321-20-301	lockin pin (d=20)	0,39
321-22-401	support with differentiated holes (5,5 t; d=18/22)	1,26
321-22-501	lockin pin (d=18/22)	0,39

Tipping beams



321-6022-101

KG 1.690



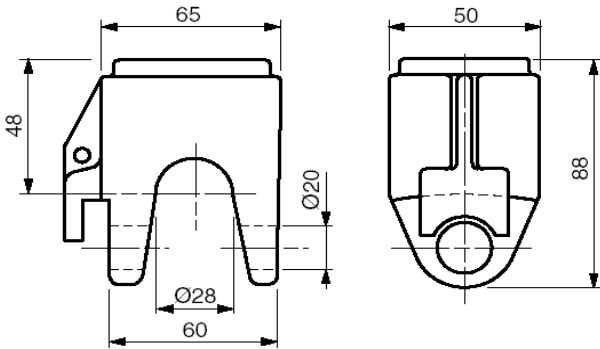
CODE	DESCRIPTION	L= mm	WEIGHT
321-210F-101	tipping beams front $\text{Ø}76 \times 12,5$	2100	40
321-220F-101	tipping beams front $\text{Ø}76 \times 12,5$	2200	42
321-210R-101	tipping beams rear $\text{Ø}76 \times 12,5$	2100	50
321-220R-101	tipping beams rear $\text{Ø}76 \times 12,5$	2200	52
321-6022-101	fork $\text{Ø}60$		1,69

9.3.1

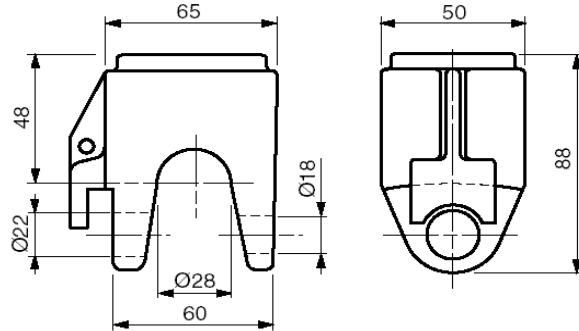
TIPPING BEAMS WITH FORK ASSEMBLY Ø76x12,5; 2,5-5,5 t



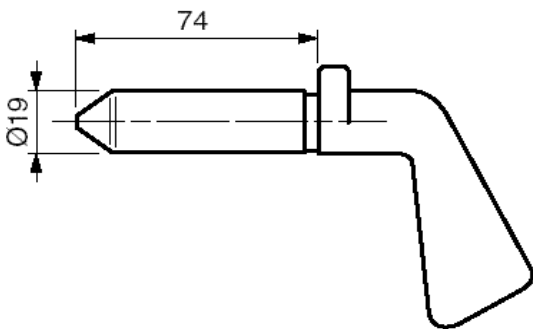
321-22-201 KG 1.260



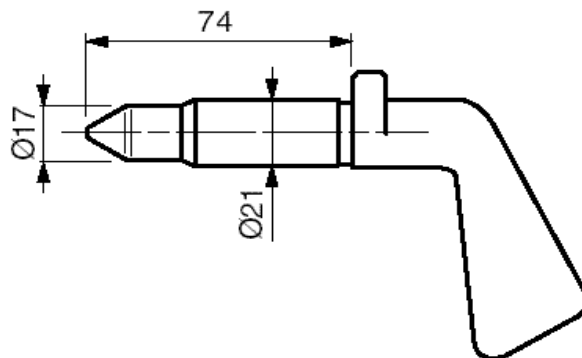
321-22-401 KG 1.260



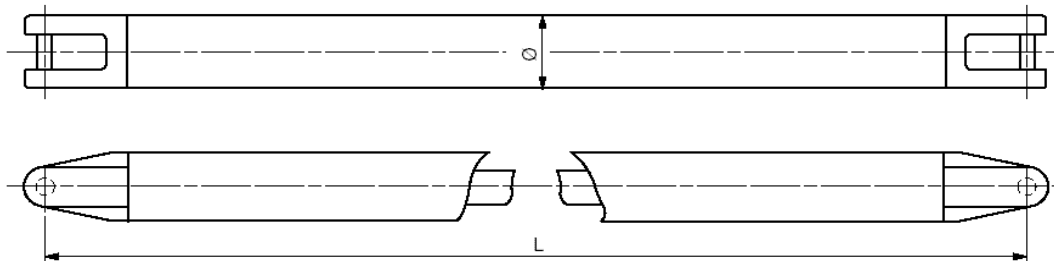
321-22-301 KG 0.390



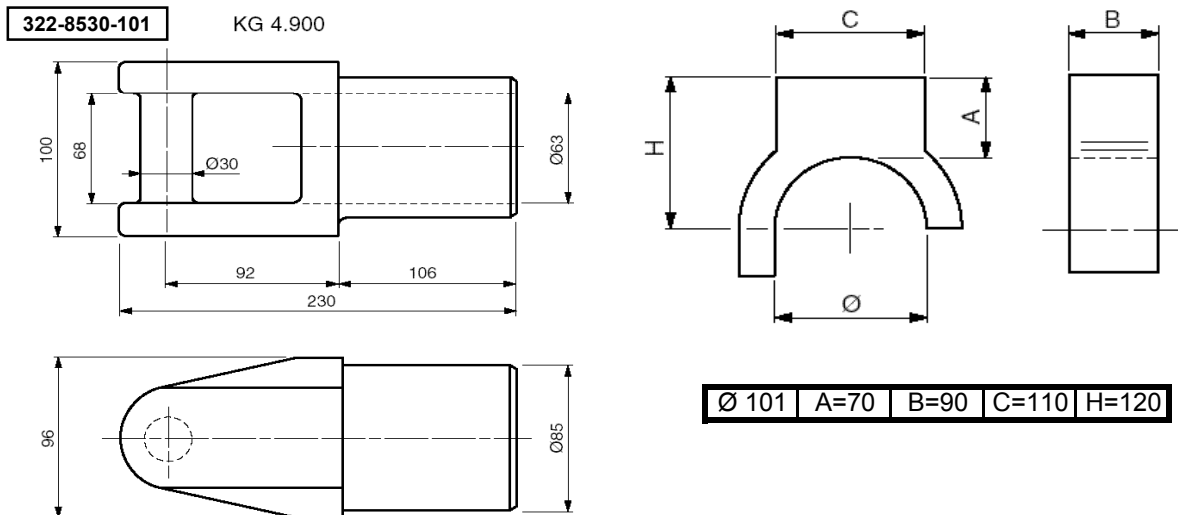
321-22-501 KG 0.390



CODE	DESCRIPTION	WEIGHT
321-22-201	support (5,5t; d=20)	1,26
321-20-301	locked pin (d=20)	0,39
321-22-401	support with differentaited holles (5,5 t; d=18/22)	1,26
321-22-501	locked pin (d=18/22)	0,39



322-101-101



CODE	DESCRIPTION	L= mm	WEIGHT
322-200F-101	tipping beams front - compl. Ø101x10	2000	51
322-210F-101	tipping beams front - compl. Ø101x10	2100	53,3
322-220F-101	tipping beams front - compl. Ø101x10	2200	55,6
322-200R-101	tipping beams rear - compl. Ø101x10	2000	72
322-210R-101	tipping beams rear - compl. Ø101x10	2100	75,3
322-220R-101	tipping beams rear - compl. Ø101x10	2200	78,7
322-8530-101	fork Ø85		4,9
322-101-101	rein (for beam Ø101)		7,7

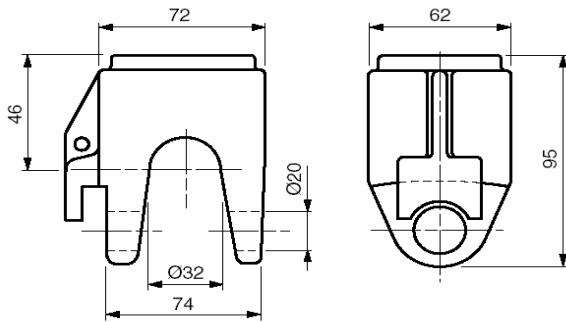
9.4.1

TIPPING BEAMS WITH FORK ASSEMBLY Ø101x10; 7-10 t



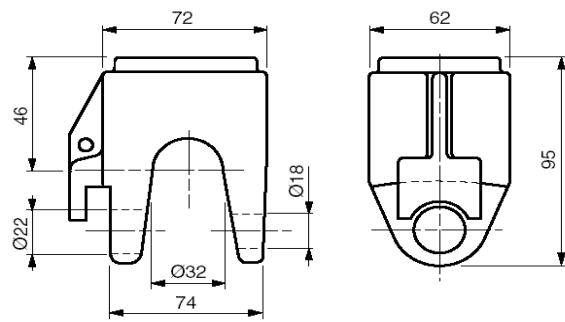
322-20-201

KG 1.950



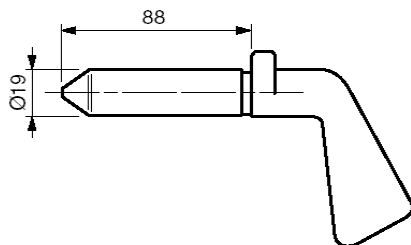
322-22-501

KG 1.950



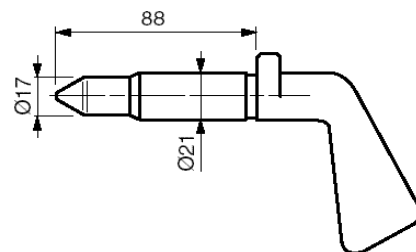
322-20-301

KG 0.430



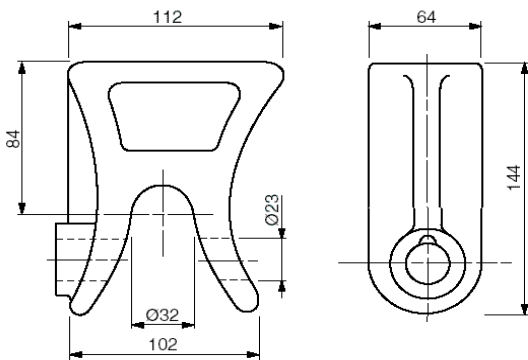
322-22-601

KG 0.430

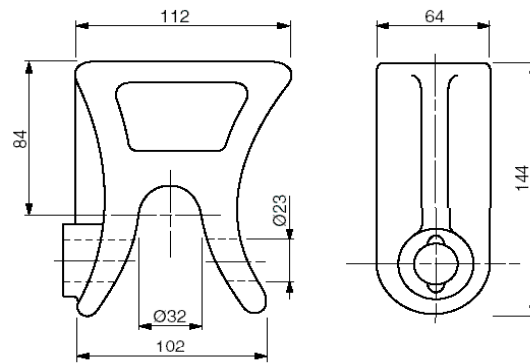


CODE	DESCRIPTION	WEIGHT
322-20-201	support (16 t d=20)	1,95
322-20-301	lockin pin (d=20)	0,43
322-22-501	support with differentiated holles (16 t d=18/22)	1,95
322-22-601	locked pin (d=18/22)	0,43

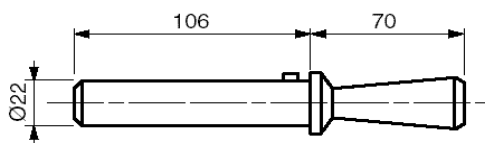
322-84-101 KG 3.600



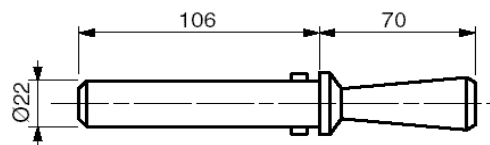
322-84-301 KG 3.600



322-22-201 KG 0.470



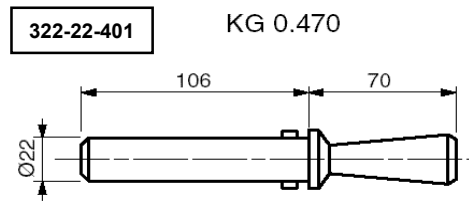
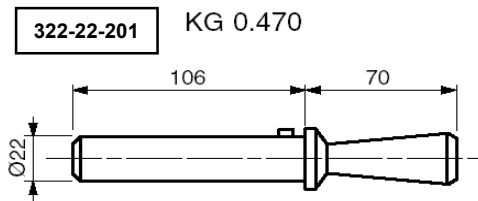
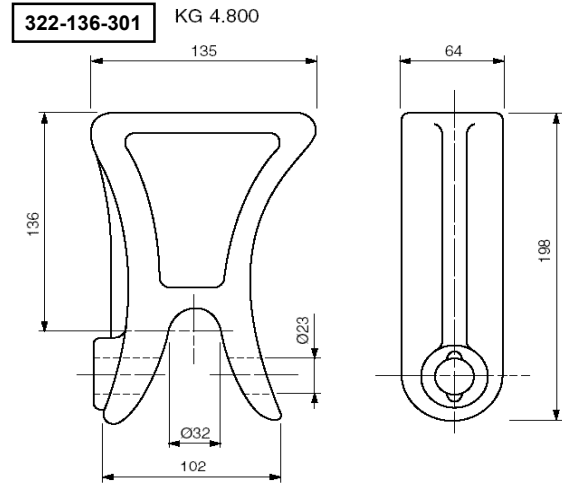
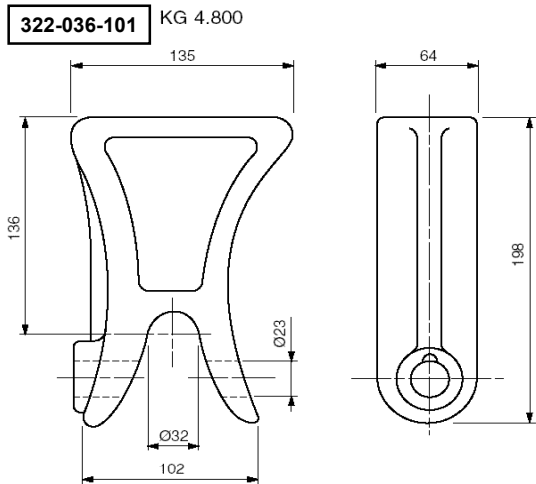
322-22-401 KG 0.470



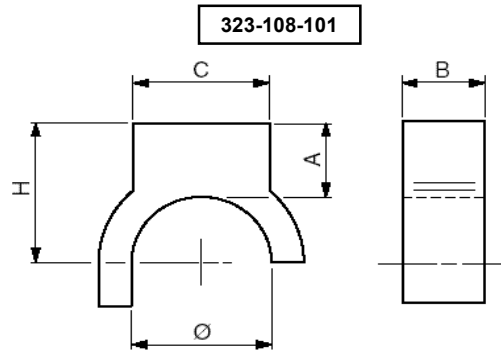
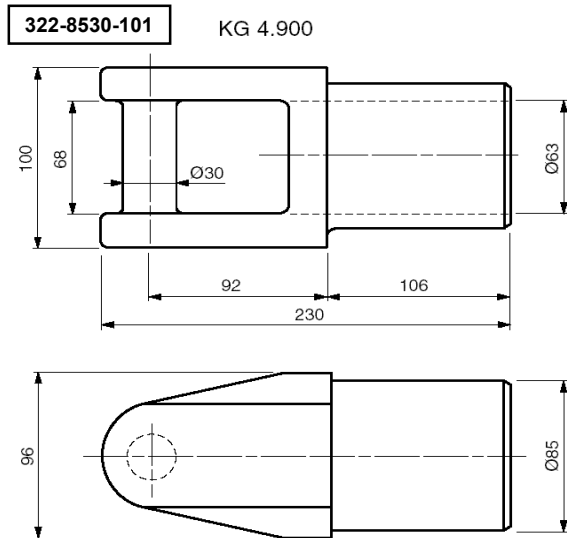
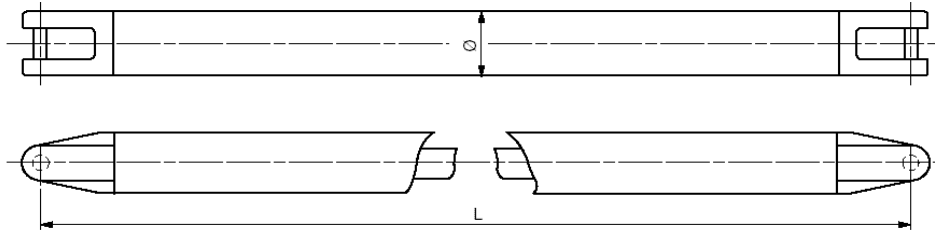
CODE	DESCRIPTION	WEIGHT
322-84-101	low support with eyelet (20 t; h=84)	3,6
322-22-201	locked pin (d=22)	0,47
322-84-301	twin fluted low support with eyelet (20 t; h=84)	3,6
322-22-401	locked pin (d=22)	0,47

9.4.3

TIPPING BEAMS WITH FORK ASSEMBLY Ø101x10; 7-10 t



CODE	DESCRIPTION	WEIGHT
322-036-101	single fluted hight support (20 t; h=136)	4,8
322-22-201	locked pin (d=22)	0,47
322-136-301	twin fluted fluted hight support (20 t; h=136)	4,8
322-22-401	locked pin (d=22)	0,47



Ø 108 | A=70 | B=90 | C=110 | H=124

CODE	DESCRIPTION	L= mm	WEIGHT
323-210F-101	tipping beams front - compl Ø108x13	2100	65
323-220F-101	tipping beams front - compl Ø108x13	2200	68
323-210R-101	tipping beams rear - compl Ø108x13	2100	86
323-220R-101	tipping beams rear - compl Ø108x13	2200	89
322-8530-101	fork Ø85		4,9
323-108-101	rein (for beam Ø108)		8,1

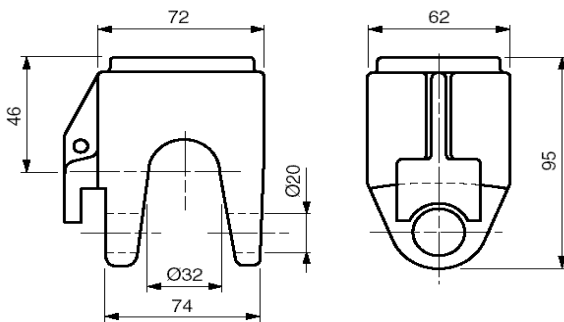
9.5.1

TIPPING BEAMS WITH FORK ASSEMBLY Ø108x13; 12-15 t



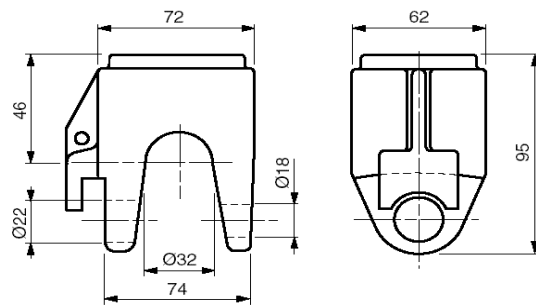
322-20-201

KG 1.950



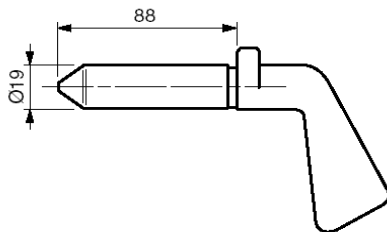
322-22-501

KG 1.950



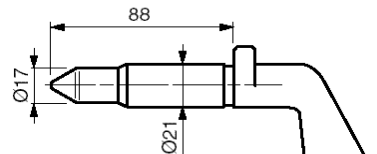
322-20-301

KG 0.430



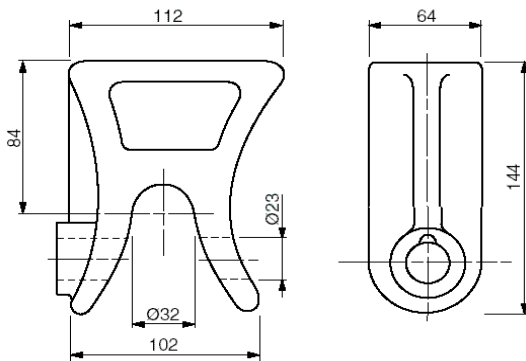
322-22-601

KG 0.430

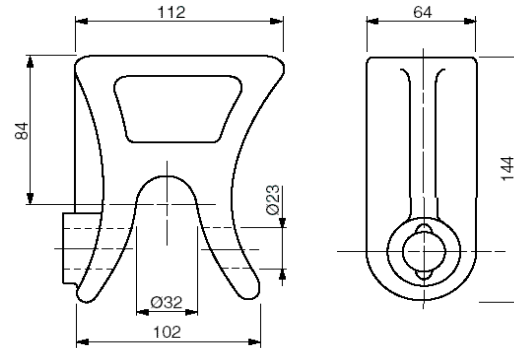


CODE	DESCRIPTION	WEIGHT
322-20-201	support (16 t d=20)	1,95
322-20-301	locking pin (d=20)	0,43
322-22-501	support with differentaited holles (16 t d=18/22)	1,95
322-22-601	locking pin (d=18/22)	0,43

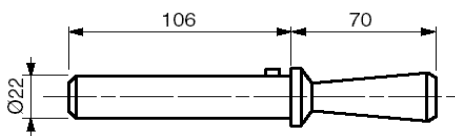
322-84-101 KG 3.600



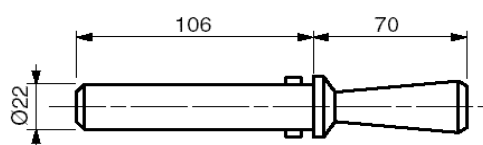
322-84-301 KG 3.600



322-22-201 KG 0.470



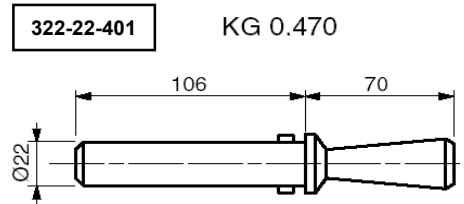
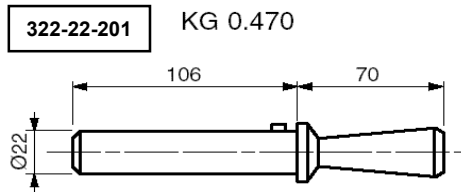
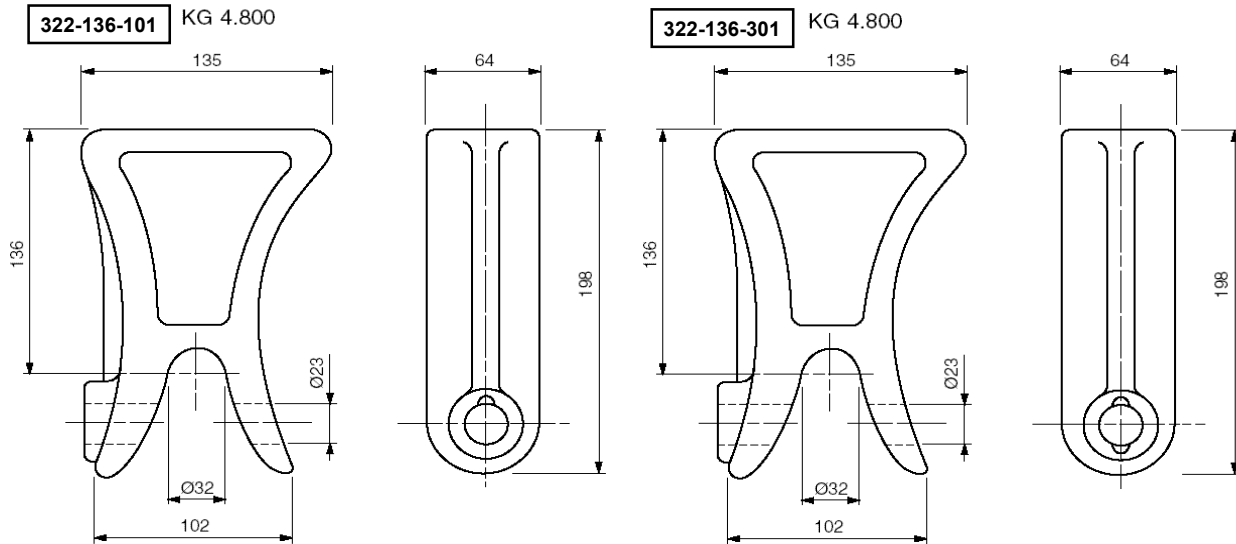
322-22-401 KG 0.470



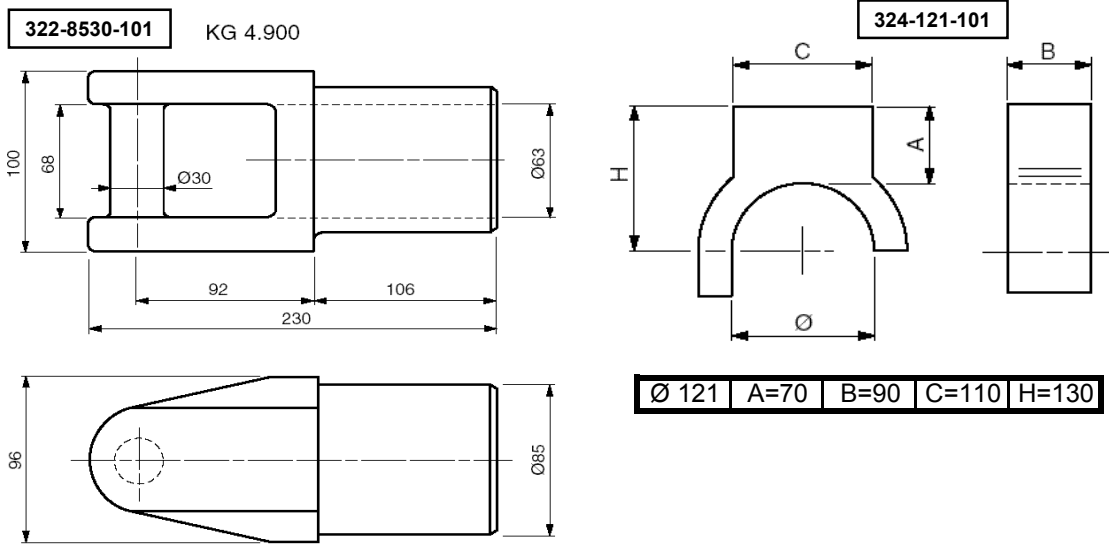
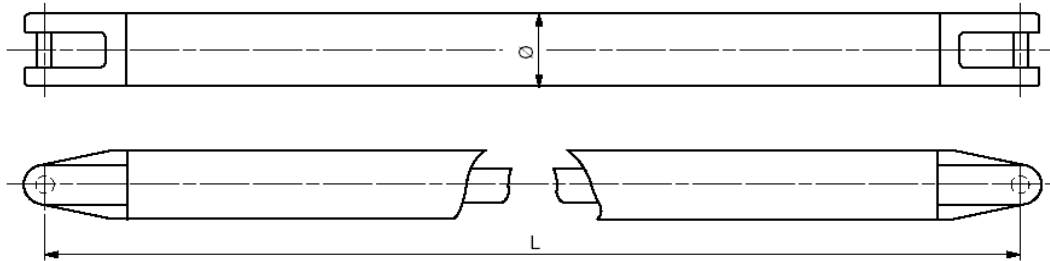
CODE	DESCRIPTION	WEIGHT
322-84-101	low support with eyelet (20 t; h=84)	3,6
322-22-201	locking pin (d=22)	0,47
322-84-301	twin fluted low support with eyelet (20 t; h=84)	3,6
322-22-401	locking pin (d=22)	0,47

9.5.3

TIPPING BEAMS WITH FORK ASSEMBLY Ø108x13; 12-15 t



CODE	DESCRIPTION	WEIGHT
322-136-101	single fluted hight support (20 t; h=136)	4,8
322-22-201	locking pin (d=22)	0,47
322-136-301	twin fluted hight support - (20 t; h=136)	4,8
322-22-401	locking pin (d=22)	0,47



CODE	DESCRIPTION	L= mm	WEIGHT
324-210F-101	tipping beams front - compl Ø121x13	2100	72
324-220F-101	tipping beams front - compl Ø121x13	2200	72
324-224F-101	tipping beams front - compl Ø121x13	2240	72
324-210R-101	tipping beams rear - compl Ø121x13	2100	93
324-220R-101	tipping beams rear - compl Ø121x13	2200	93
324-224R-101	tipping beams rear - compl Ø121x13	2240	93
322-8530-101	fork Ø85		4,9
324-121-101	rein (for beam Ø121)		7,8

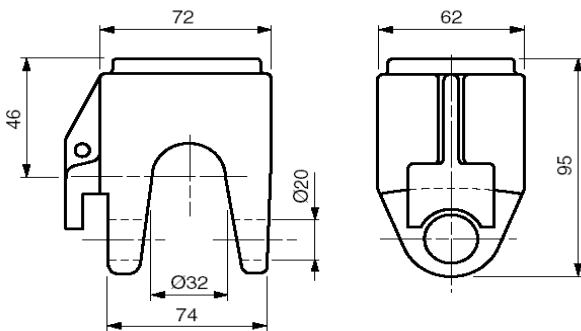
9.6.1

TIPPING BEAMS WITH FORK ASSEMBLY
Ø121x13; 18-20 t



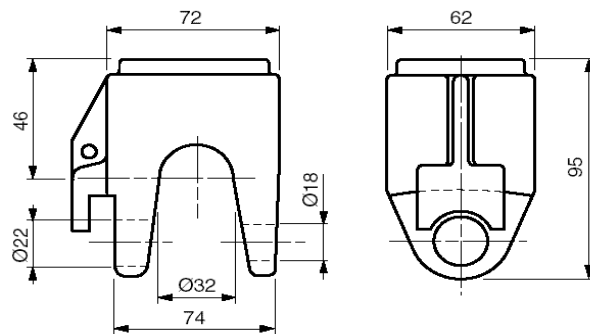
322-20-201

KG 1.950



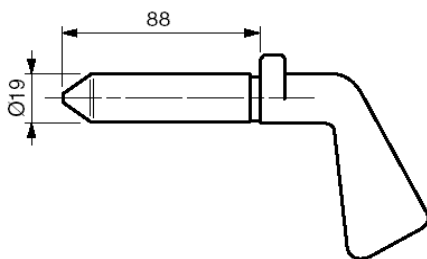
322-22-501

KG 1.950



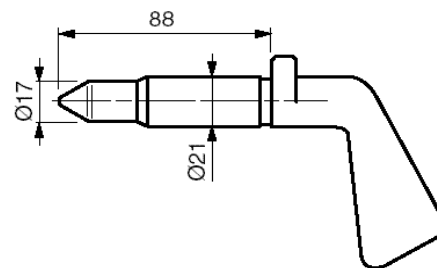
322-20-301

KG 0.430



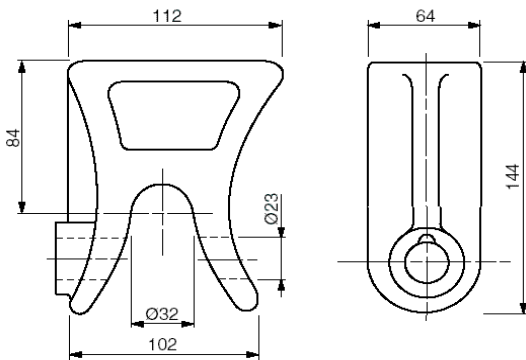
322-22-601

KG 0.430

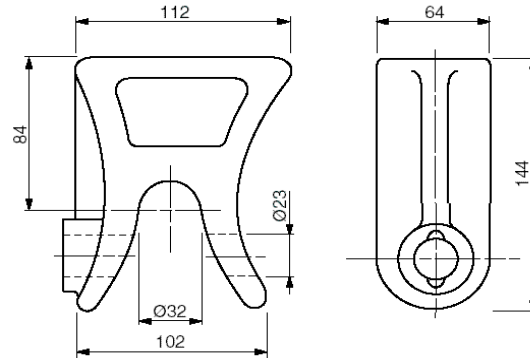


CODE	DESCRIPTION	WEIGHT
322-20-201	support (16 t d=20)	1,95
322-20-301	locking pin (d=20)	0,43
322-22-501	support with differentaited holles (16 t d=18/22)	1,95
322-22-601	locking holles (d=18/22)	0,43

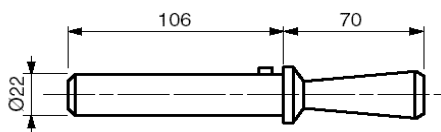
322-84-101 KG 3.600



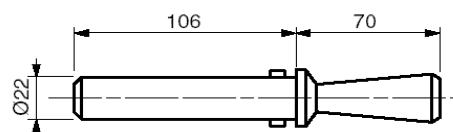
322-84-301 KG 3.600



322-22-201 KG 0.470



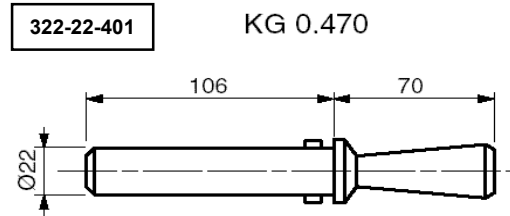
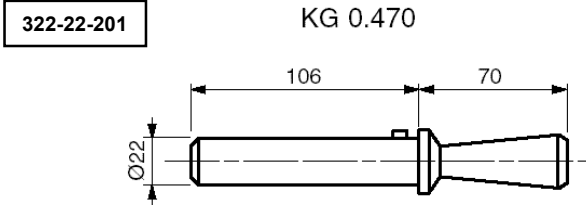
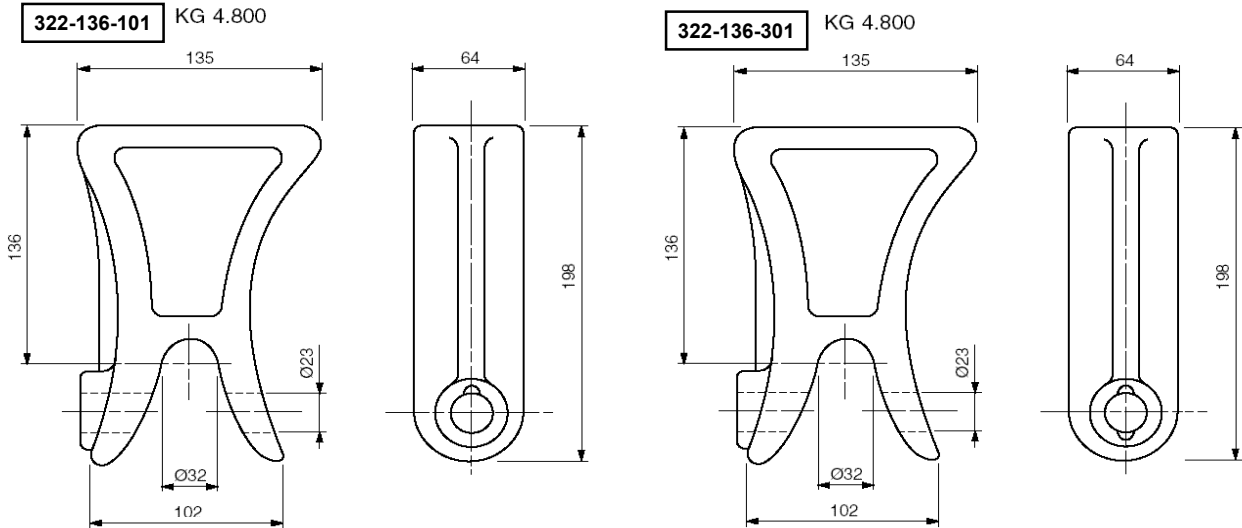
322-22-401 KG 0.470



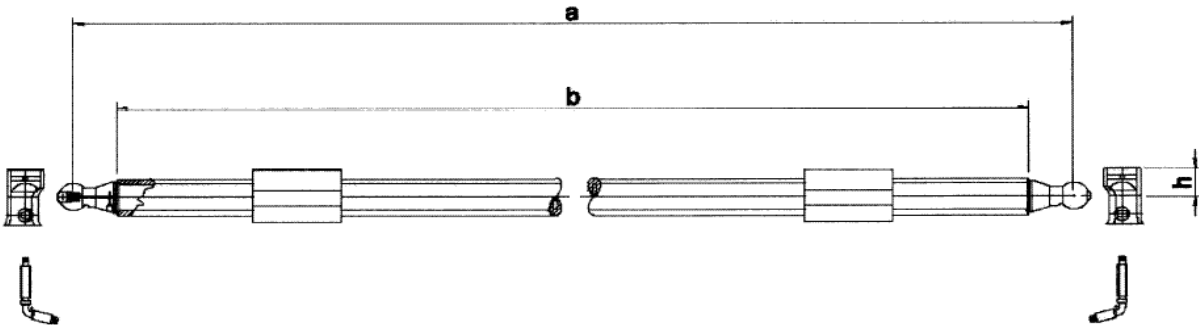
CODE	DESCRIPTION	WEIGHT
322-84-101	low support with eyelet (20 t; h=84)	3,6
322-22-201	locking pin (d=22)	0,47
322-84-301	twin fluted low support with eyelet (20 t; h=84)	3,6
322-22-401	locking pin (d=22)	0,47

9.6.3

TIPPING BEAMS WITH FORK ASSEMBLY Ø121x13; 18-20 t



CODE	DESCRIPTION	WEIGHT
322-136-101	single fluted hight support (20 t; h=136)	4,8
322-22-201	locking pin (d=22)	0,47
322-136-301	twin fluted hight support (20 t; h=136)	4,8
322-22-401	locking pin (d=22)	0,47



Ton	CODE	DESCRIPTION	a	b	Ø	h	d	WEIGHT
12	341-205-108	tipping beams	2050	1830	60	60	82x12,5	44
24	342-205-108	tipping beams	2050	1810	80	85	108x12,5	71
36	343-205-108	tipping beams	2050	1750	100	90	127x16	107

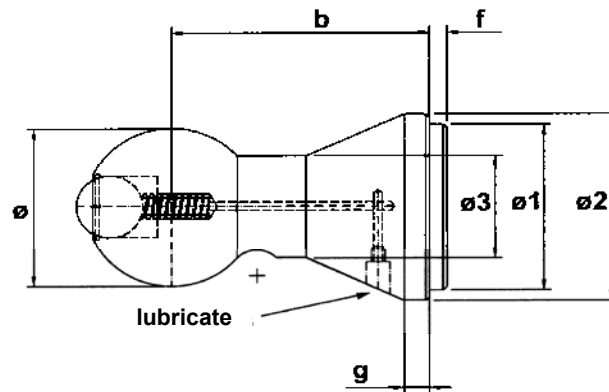
Parts for tipping beams:



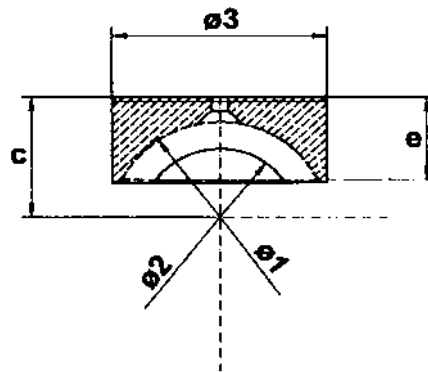
Beam	Sphere	Pan 1.	Pan 2.	PVC	locking pin 1.	locking pin 2.	Rein
341-205-108	341-60-108	341-60-108	341-60-508	341-60-407	341-20-308	341-20-608	
342-205-108	342-80-108	342-80-208	342-80-508	342-80-407	342-25-308	342-25-608	323-108-1011
343-205-108	343-100-108	343-100-208	343-100-508	343-100-407	343-30-308	343-30-608	030808.00

9.9.1

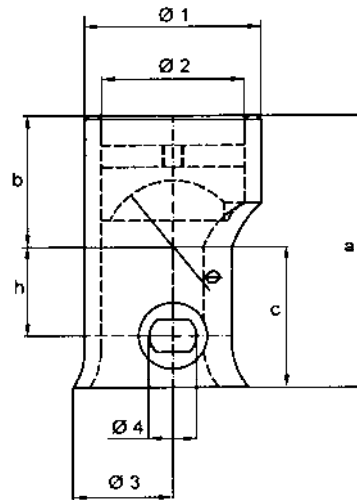
TIPPER BEAMS "3000" SERIES + SET; 12t;
24t; 36t



CODE	mm							Lubricate	Kg
	ø	ø1	ø2	ø3	b	f	g		
341-60-108	60	65	65	35	120	0	40	yes	3
342-80-108	80	90	97	52	120	10	16	yes	5,6
343-100-108	100	105	118	69	120	10	15	yes	9,8

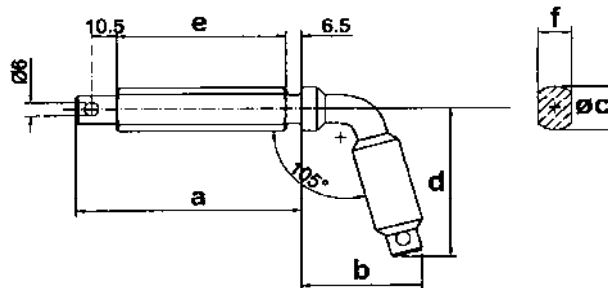


PVC plug for fitted support						
CODE	mm					Kg
	ø1	ø2	ø3	c	e	
341-60-407	60	40	61	36	24	0,07
342-80-407	80	63	80,9	58	40,7	0,13
343-100-407	100	72	101	62,5	44	0,19



Pan "3000" series - tip 1

Ton	CODE	Ø	Ø1	Ø2	Ø3	Ø4	a	b	c	h	Kg	PVC plug
12	341-60-208	60	76	62	86	20	125	60	65	41	1,56	341-60-407
24	342-80-208	80	102	82	119	25	170	85	85	53,5	3,75	342-80-407
36	030931.00	100	127	102	146	30	190	90	100	65,5	6,2	343-100-407

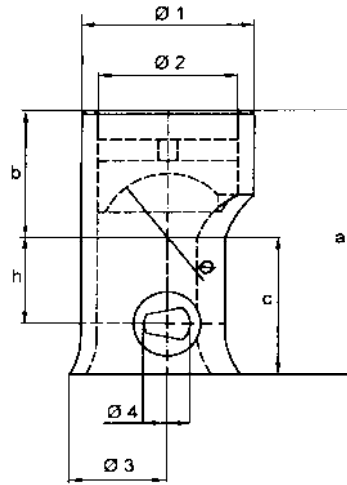


locking pin - tip1

CODE	mm						Kg
	a	b	Øc	d	e	f	
341-20-308	95	50	20	68	71,5	14	0,33
342-25-308	120,5	65	25	92	97	19	0,7
343-30-308	142,5	70	30	92	119	22	1,08

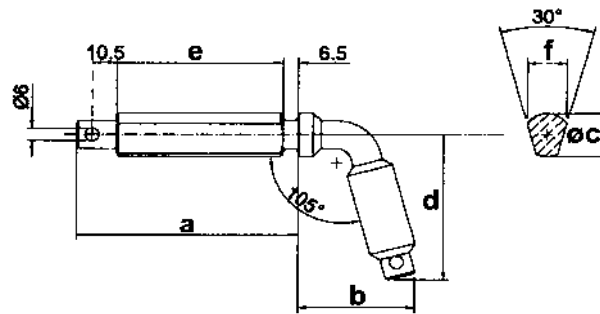
9.9.3

TIPPER BEAMS "3000" SERIES + SET; 12t; 24t; 36t



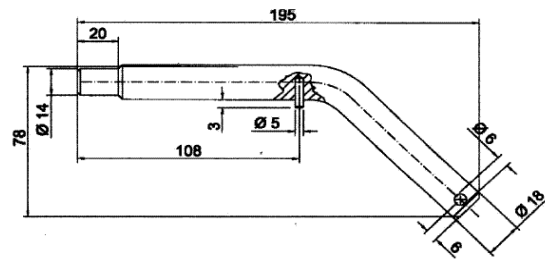
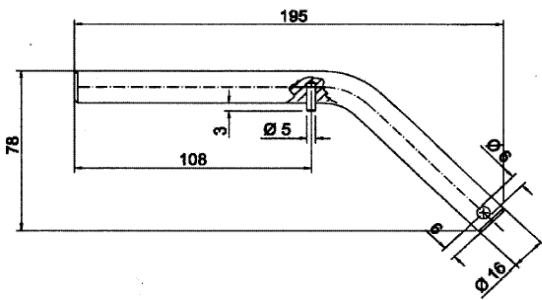
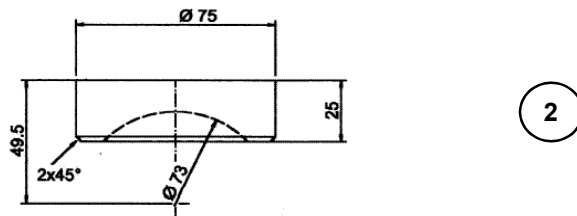
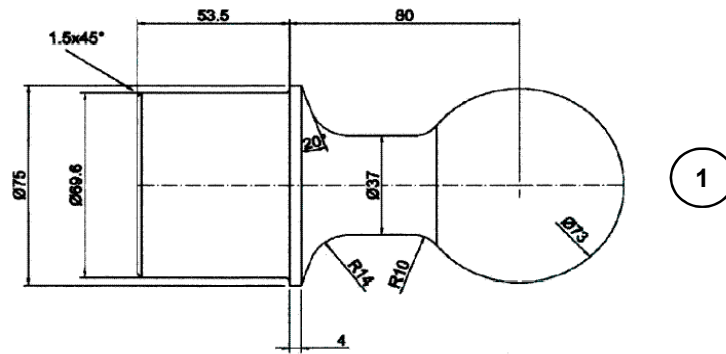
Pan "3000" series - tip 2

Ton	CODE	Ø	Ø1	Ø2	Ø3	Ø4	a	b	c	h	Kg	PVC plug
12	341-60-508	60	76	62	86	20	125	60	65	41	1,56	341-60-407
24	342-80-508	80	102	82	119	25	170	85	85	53,5	3,75	342-80-407
36	341-60-407	100	127	102	146	30	190	90	100	65,5	6,2	343-100-407



locking pin - tip 2

CODE	mm						Kg
	a	b	$\varnothing c$	d	e	f	
341-20-608	95	50	20	68	71,5	17	0,33
342-25-608	120,5	65	25	92	97	22	0,7
343-30-608	142,5	70	30	92	119	26	1,08



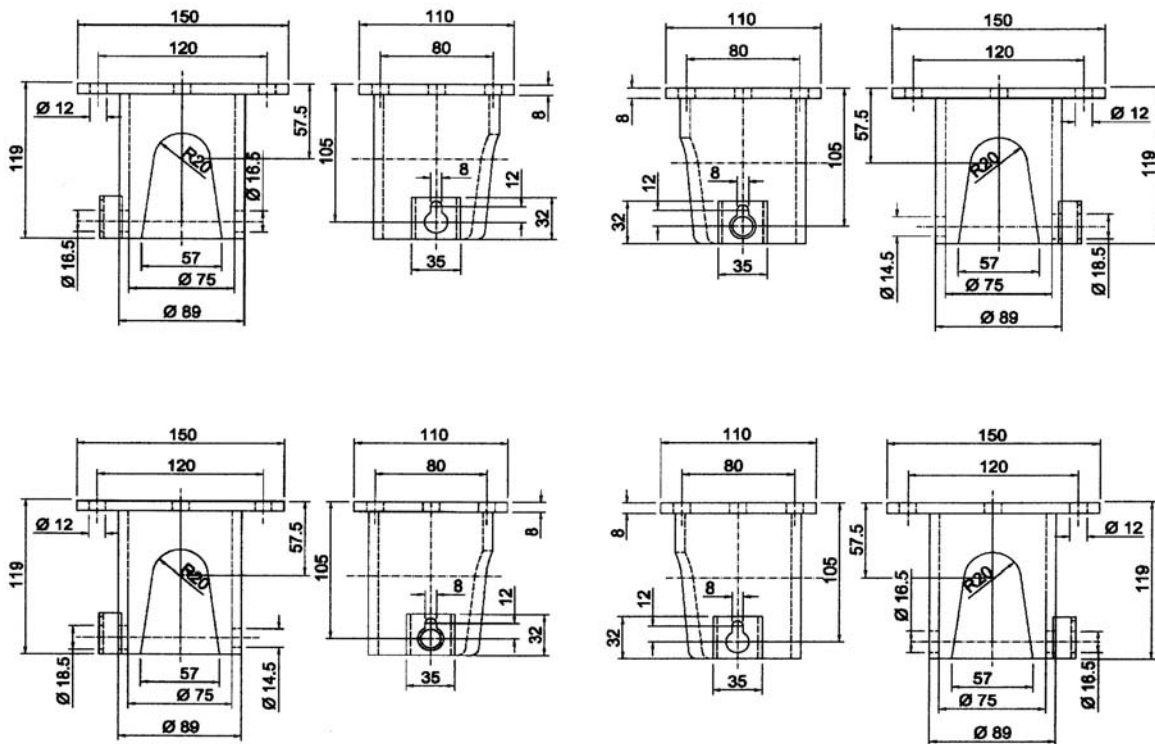
CODE	DESCRIPTION	SURFACE	WEIGHT	
1	312-73-108	sphere d=73	natur	3,7
2	312-75-217	PVC plug for fitted support		0,08
3	312-16-3023	locking pin d=16	zinc plated	0,35
4	312-18-4023	locking pin d=18/14	zinc plated	0,35

9.10.1

SPHERE Ø73mm - SET (MAX. 5000 kg)

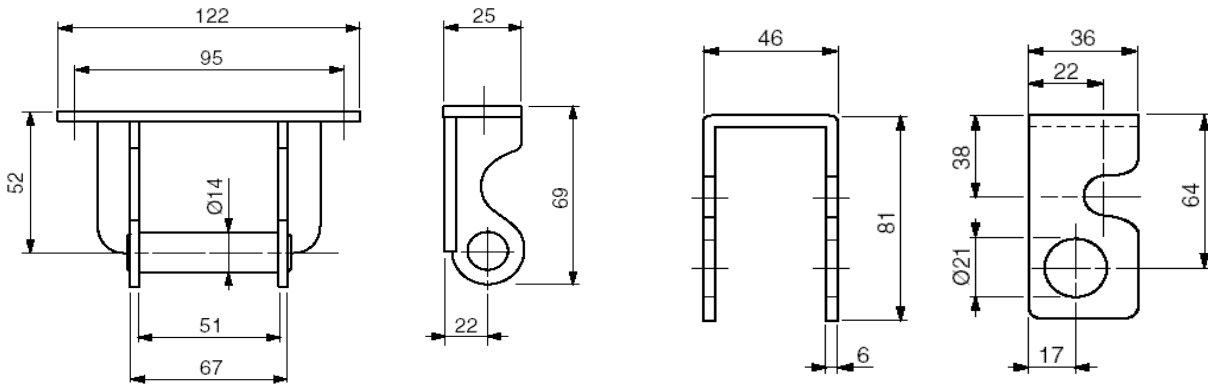


312-75F-203



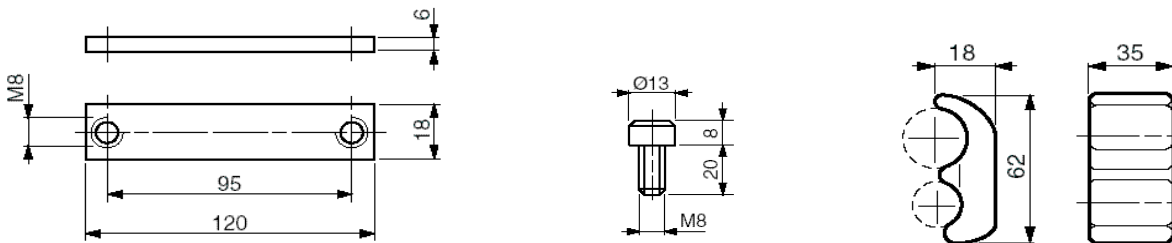
312-75R-203

CODE	DESCRIPTION	SURFACE	WEIGHT
312-75F-203	pan d=75 front right-left	zinc plated	3,32
312-75R-203	pan d=75 rear right-left	zinc plated	3,32



1

2



3

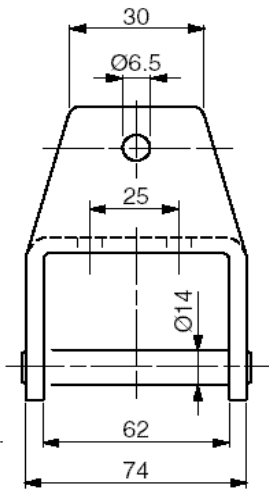
4

5

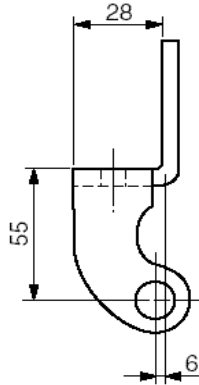
KATAL. BR.	DESCRIPTION	POVRŠINA	Kg/kom
1	361-14-103 hinge for aluminium 25 mm	zinc plated	0,38
2	361-14-208 support Ø14		0,25
3	1604-023-3 plate	zinc plated	0,095
4	1604-025-3 socket head screw M8x20	zinc plated	0,013
5	361-35-308 locking plate		0,14

9.12

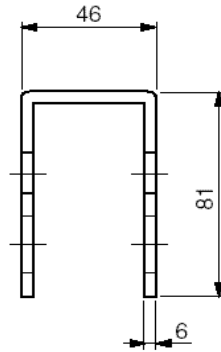
UNIVERSAL HINGES FOR ALUMINIUM SIDE
BOARDS SP30



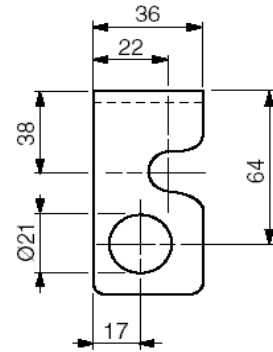
1



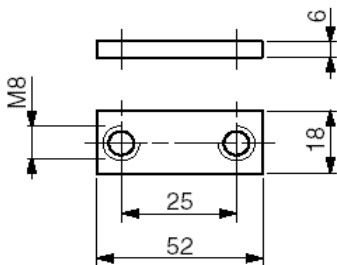
2



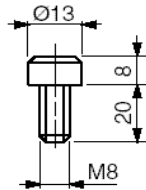
3



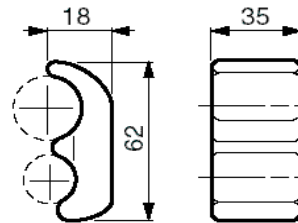
4



5

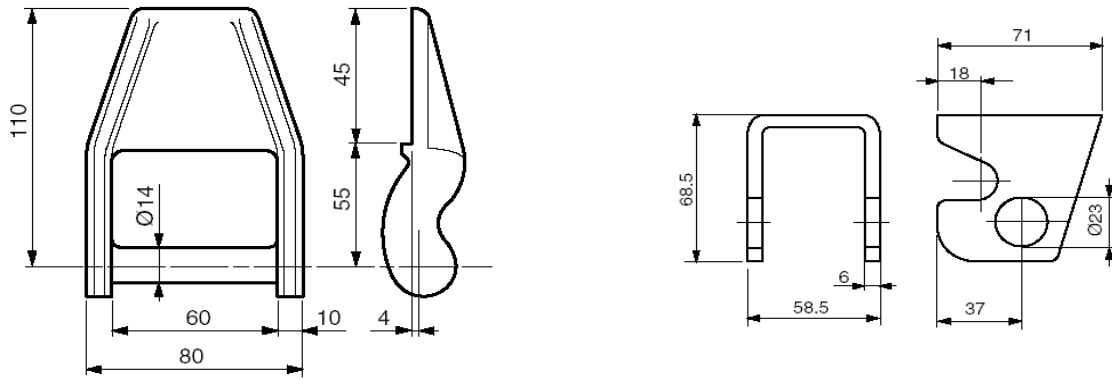


6



7

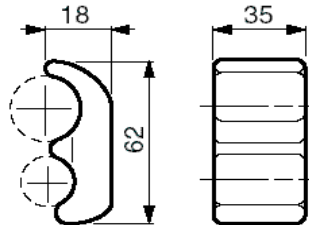
CODE	DESCRIPTION	SURFACE	WEIGHT
1	362-14-103 hinge Ø14 mm for Sp30	zinc plated	0,39
2	361-14-208 support Ø14		0,25
3	362-14-203 plate	zinc plated	0,035
4	1604-025-3 socket head screw M8x20	zinc plated	0,013
5	361-35-308 locking plate		0,14



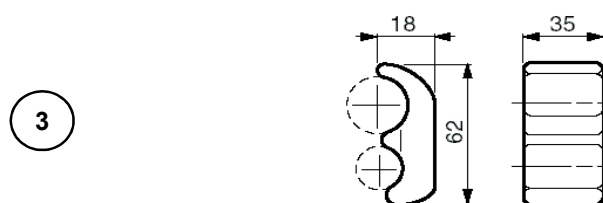
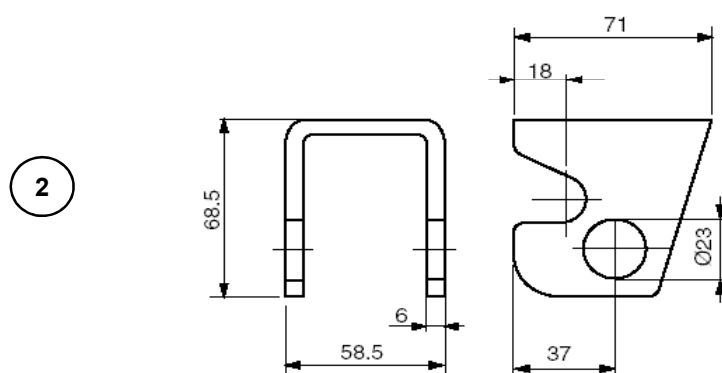
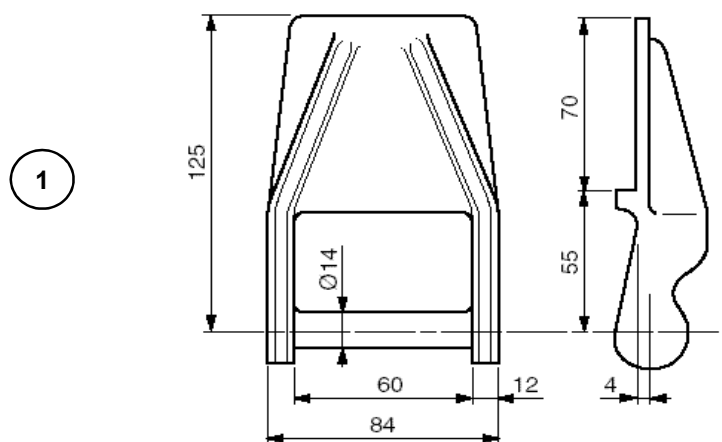
1

2

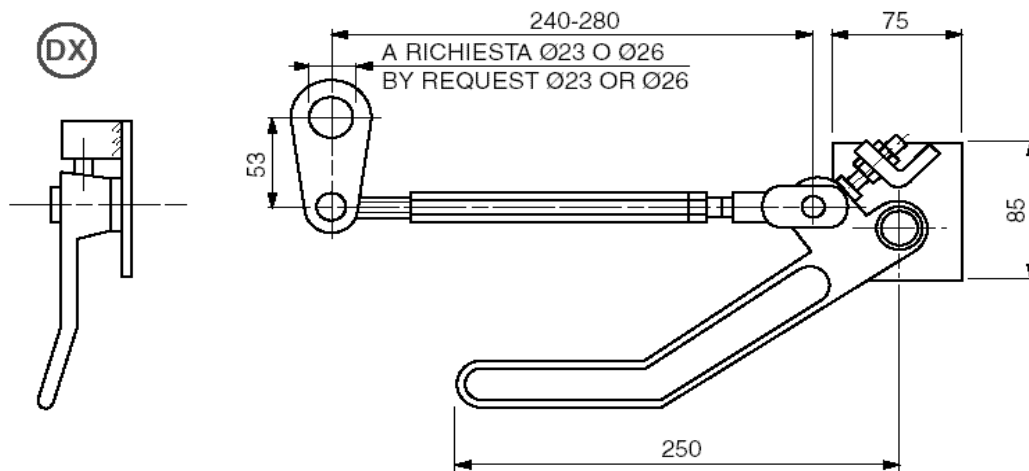
3



	CODE	DESCRIPTION		WEIGHT
1	363-14-108	light hinge	steel	0,5
2	363-14-208	support Ø14	steel	0,29
3	361-35-308	locking plate		0,14

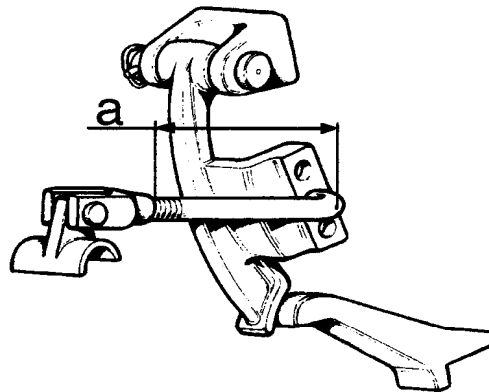
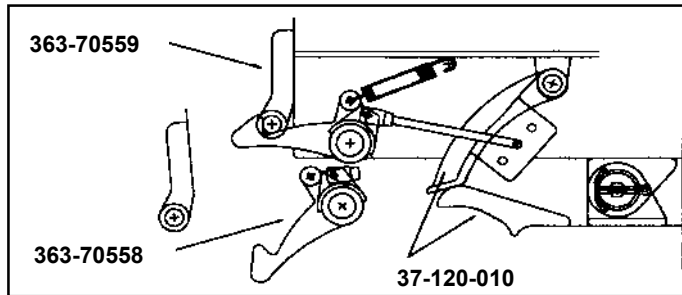


	CODE	DESCRIPTION		WEIGHT
1	363-14-408	medium - weight hinge	steel	0,66
2	363-14-208	support Ø14	steel	0,43
3	361-35-308	locking plate		0,14



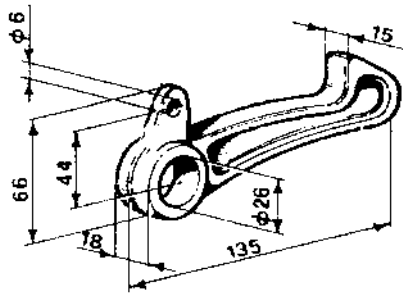
CODE	DESCRIPTION	WEIGHT
37-010DX-108	lever simil rapid type right	1,75
37-010SX-108	lever simil rapid type right	1,75

MOUNTING INSTALATION

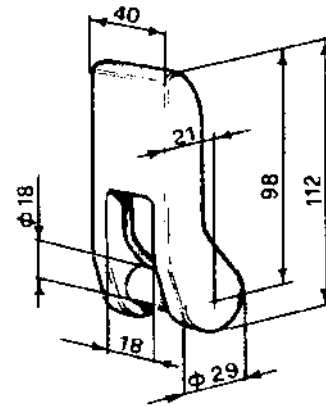


37-120-010

37-240-010



363-70558



363-70559

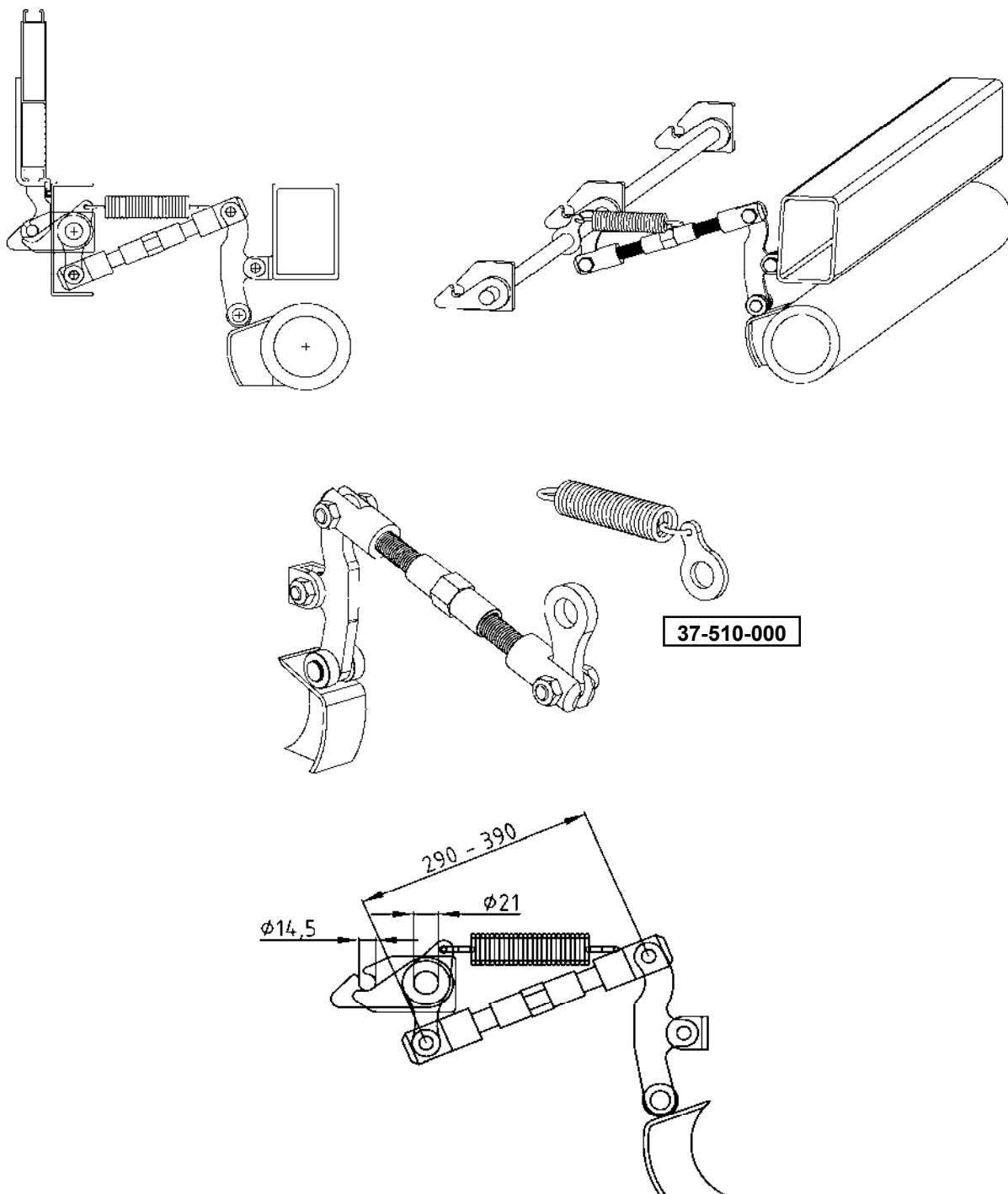
CODE	DESCRIPTION	WEIGHT
363-70558	claw for automatic opening	0,35
363-70559	slip	0,45
37-120-010	Automatic opening a = 120 mm	1,15
37-240-010	Automatic opening a = 240 mm	1,2

9.16.1

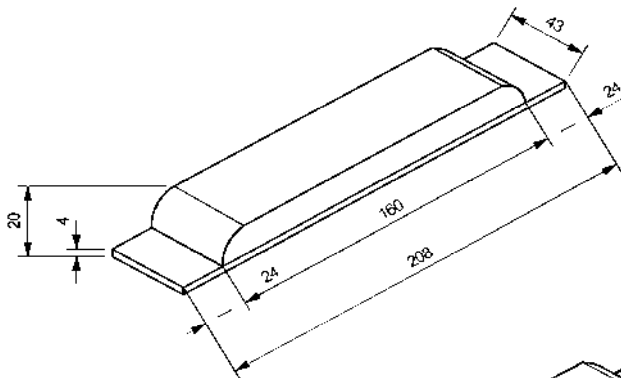
AUTOMATIC REAR HINGE PAWLS 12t

EUROWIND

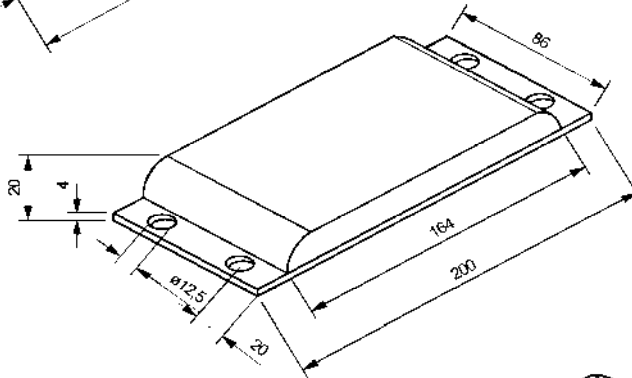
CONSTITUTION



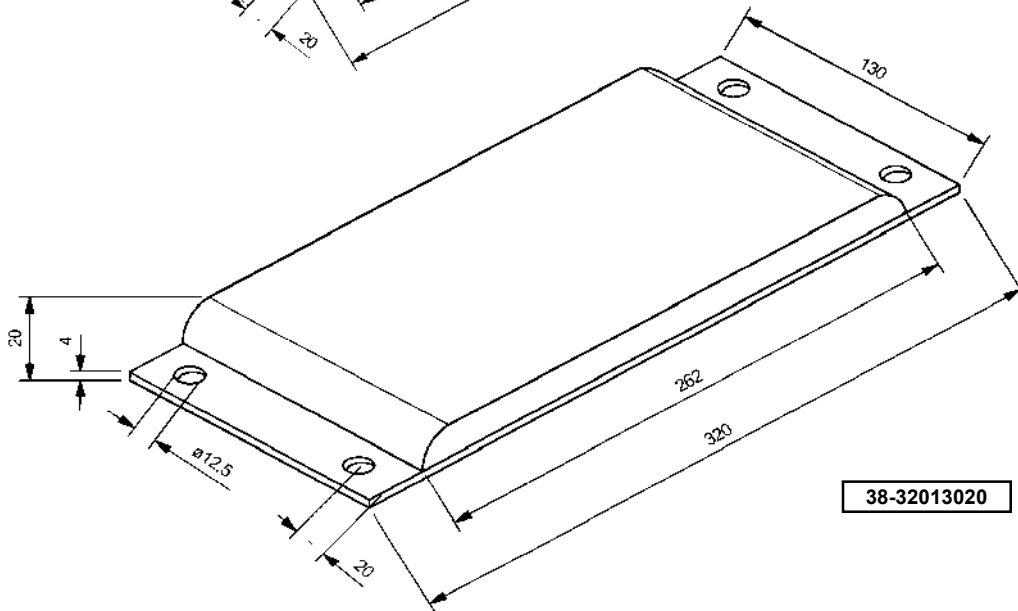
CODE	DESCRIPTION	WEIGHT
37-510-000	Automatic opening kit 12t	2,5



38-2084320

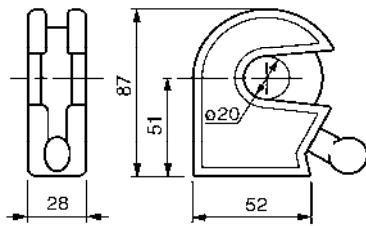


38-2008620

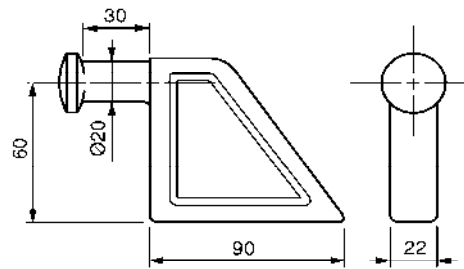


38-32013020

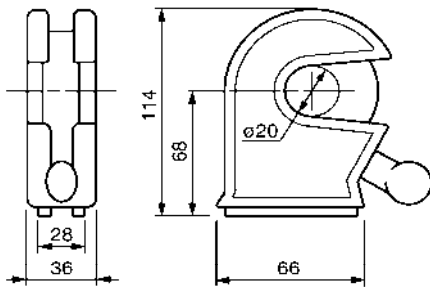
CODE	DESCRIPTION	WEIGHT
38-2084320	rubber support with metal 208 x 43 mm	0,45
38-2008620	rubber support with metal 200 x 86 mm	0,82
38-32013020	rubber support with metal 320 x 130 mm	2,04



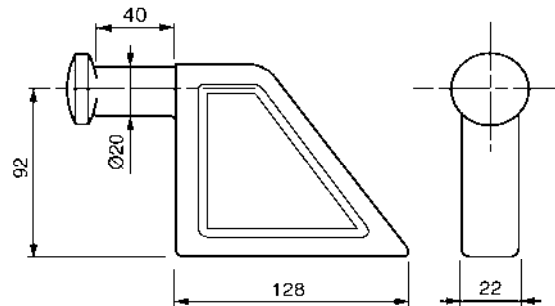
363-20-018



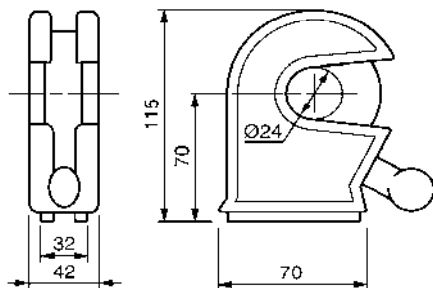
363-20-028



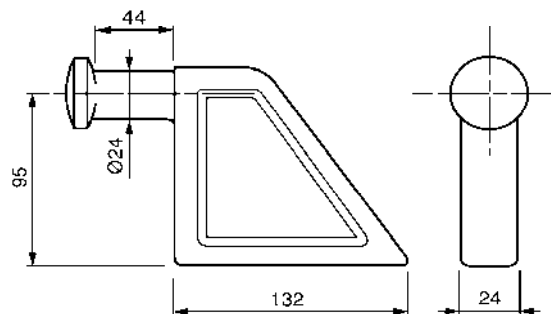
363-20-078



363-20-088

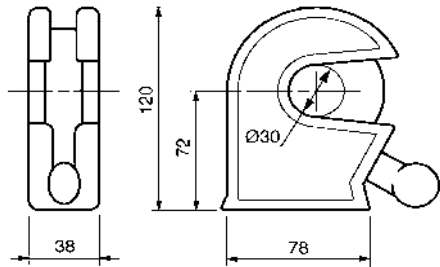


363-24-018

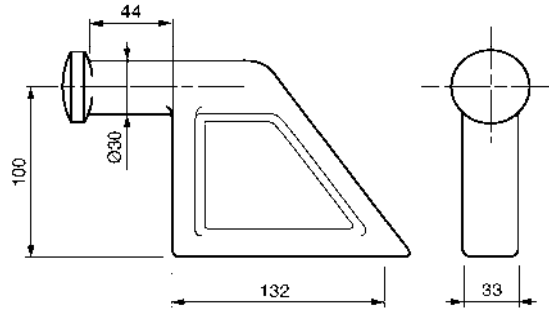


363-24-118

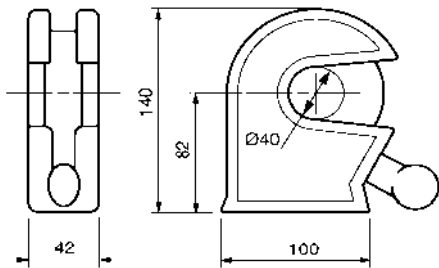
CODE	DESCRIPTION	WEIGHT
363-20-018	clamp Ø20	0,76
363-20-028	column Ø20	0,615
363-20-078	clamp Ø20	1,53
363-20-088	column Ø20	0,96
363-24-018	clamp Ø24	1,45
363-24-118	column Ø24	1,04



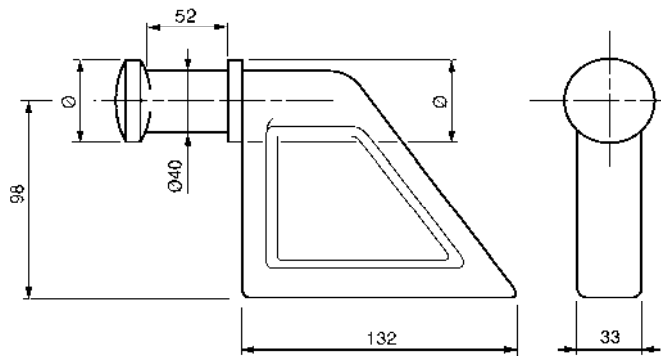
363-30-028



363-30-018

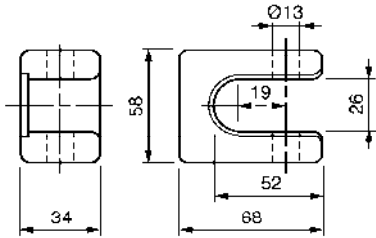


363-40-028

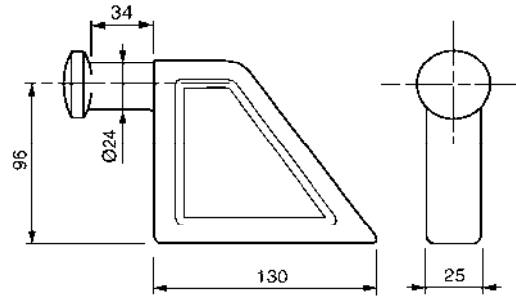


363-40-018

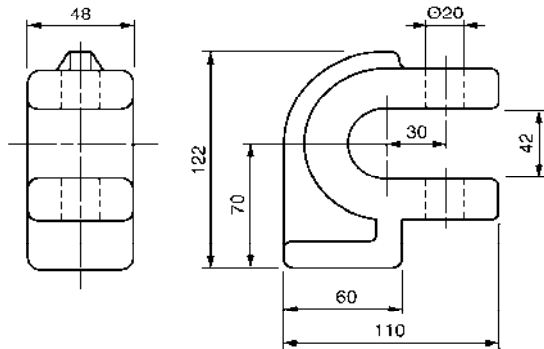
CODE	DESCRIPTION	WEIGHT
363-30-028	clamp Ø30	1,72
363-30-018	column Ø30	1,67
363-40-028	clamp Ø40	2,41
363-40-018	column Ø40	1,97



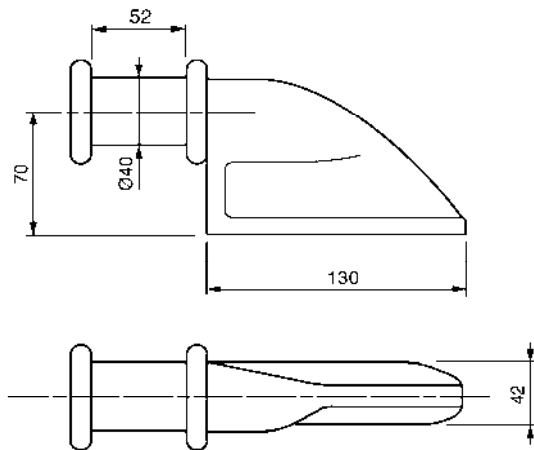
363-26-028



363-24-128



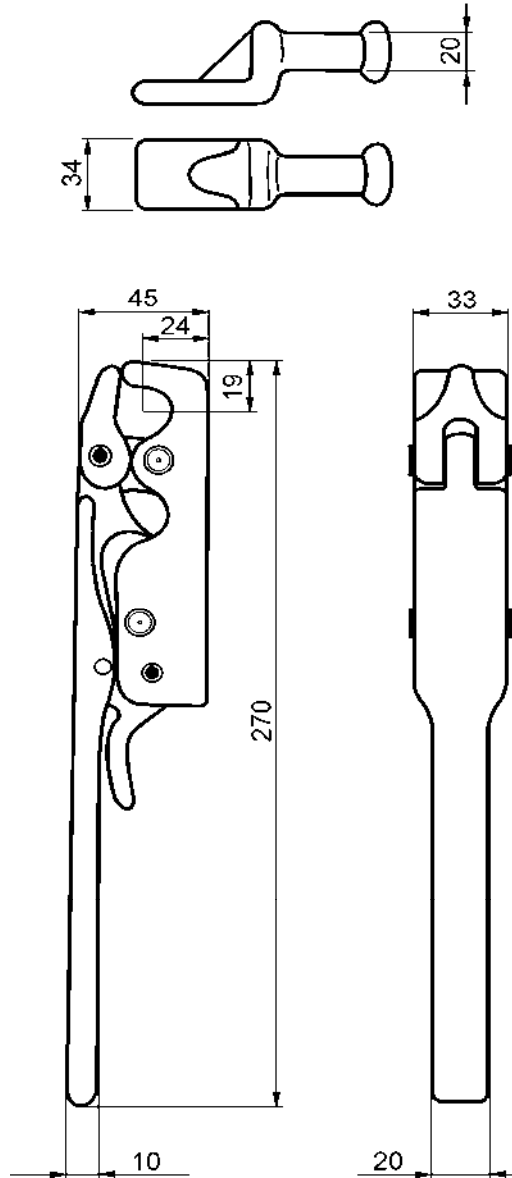
363-42-028



363-40-118

363-40-128

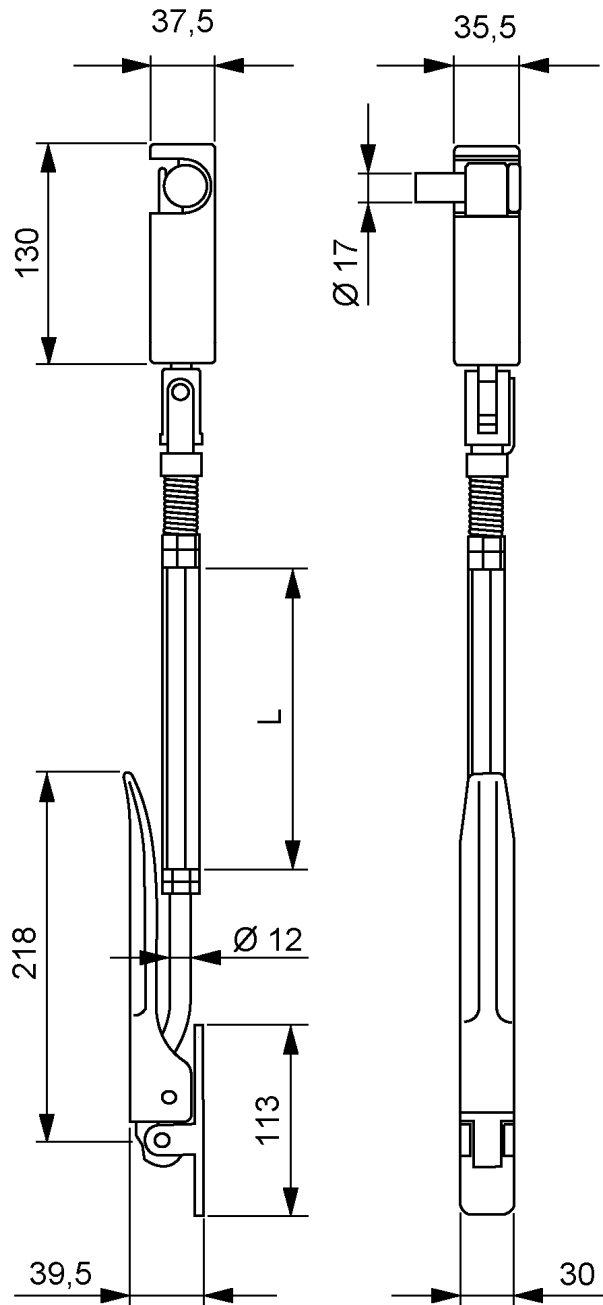
CODE	DESCRIPTION	WEIGHT
363-26-028	clamp Ø26	0,5
363-24-128	column Ø24	1,2
363-42-028	clamp Ø40	1,87
363-40-118	column - right Ø40	2,15
363-40-128	column - left Ø40	2,15



CODE	DESCRIPTION	SURFACE	WEIGHT
363-20-068	clamp d=20	natur	1
363-20-058	pin weldable d=20	natur	0,315

9.22

**CLAMP FOR TIPPERS- MOUNTING INSIDE
PILLAR**



CODE	DESCRIPTION	L= mm	WEIGHT
363-17-058	clamp for tipper H=500 d=Ø17	90	2,3
363-17-068	clamp for tipper H=600 d=Ø17	190	2,6
363-17-088	clamp for tipper H=800 d=Ø17	390	3,2
363-17-108	clamp for tipper H=1000 d=Ø17	590	3,8