



The Ideal Solution

Tel: 01837 659999

Email: info@ideallifts.com

Web: ideallifts.com



Contents

- 3 Why Choose Ideal Lifts?
- 4 Ideal Lifts Frame System
- 5 Company Profile
- 6 Company Structure & Key Business Strategies
- 7 Health & Safety
- 8 General Project Information
- 9 Indicative Project Information
- 10 Indicative Project Information
- 11 Insurances
- 12 Trade Associations & Quality Memberships
- 13 Essential Car
- 14 Standard Design
- 15 Enhanced Car
- 16 Choice of Design
- 17 Wall Finishes
- 18 Ceiling Options
- 19 Floor Finishes
- 20 Handrail Options
- 21 Car Operating Panel (COP)
- 22 Landing Door Entrances
- 23 Full Width Landing Entrances
- 24 Protective Drapes
- 25 DCP Unit
- 26 Automatic Remote Monitoring System
- 27 Open Protocol
- 28 Servicing & Maintenance

Why Choose Ideal Lifts?

We care about our clients, providing friendly professional advice to ensure our lifts are fit for purpose, cost effective and reliable.

From 4 to 21 person, with ultra compact installations in traditional build with a unique range of solutions for **OFFSITE** construction such as **Timber Frame**, **Modular** and **Light Gauge Steel** (LGS) using our Ideal frame system.

A comprehensive range of lifts with contemporary finishes to suit your building needs.

Our Models

IL2 - The IL2 Pitlow hybrid design offers much of the functionality of a conventional passenger lift, with a fully enclosed cabin and automatic 'one touch' controls. The IL2 is designed to fit in only a 150mm pit and 2800mm headroom. In keeping with EN81-41 the IL2 has a drive system designed for low use where speed is not an issue.

IL3 - The IL3 Eco-Drive motor room-less (MRL) gearless traction drive passenger lift is ideal for low or medium rise buildings and for moderate use. It's a perfect cost-effective and energy efficient solution for your project. Our IL3 ensures a smooth safe ride with low noise, using 35% less electricity and can achieve 2 **BREEAM** credits. A low EN81-20 compliant pit depth can be provided reducing material and construction costs.

IL4 - The IL4 passenger lift range is for larger building and busy environments - to carry people higher and faster. Fitted with a premium variable speed motor room-less (MRL) gearless traction drive, and can achieve two **BREEAM** credits. Our IL4 passenger lifts offer safety, reliability and choice in equal measures. A low EN81-20 compliant pit depth can be provided reducing material and construction costs.

Data sheets detailing shaft, pit and headrooms with loads are available for our range of lifts, please ask for a copy or download these and Auto-CAD plans from our website to assist with your building design.

Model Name	Lift Movements (per hour)	Speed m/s (Metres per second)	Up to x No. of floors	Power options
Pitlow	25	0.15 m/s	4	Single phase
IL3	65	0.5 m/s	6	Single and Three phase
IL4	180	1 m/s – 1.6 m/s	12	Single and Three phase

N.B. 13 P (1000kg) and above are only available in Three phase

Your trusted partner

Ideal Lifts are with you every step of the way – from planning and design through to installation and maintenance.

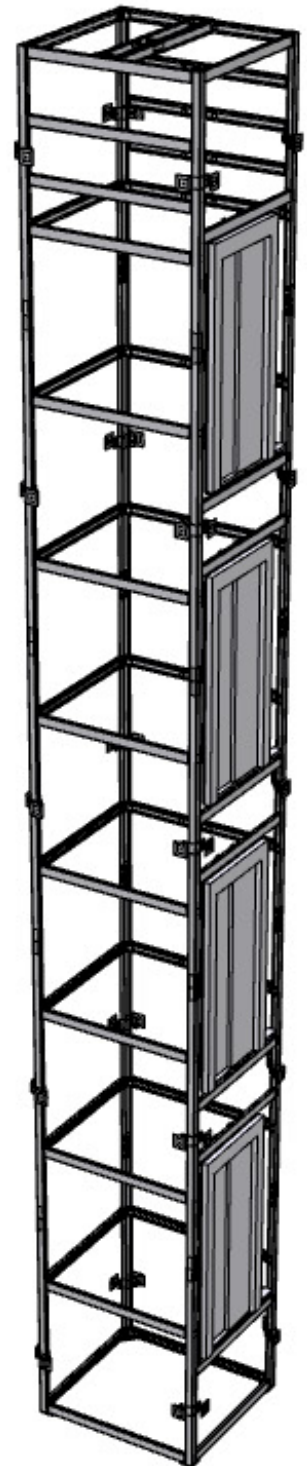
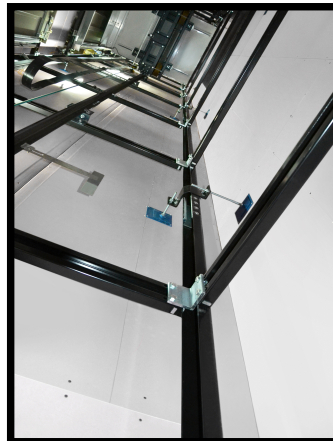
Our industry leading solutions are supported by comprehensive pre-handover quality testing and post-sales services.



Ideal Lifts Frame System for OFFSITE Construction

Frame mounted (OFFSITE) lift benefits:

- Speeds up construction to deliver the project earlier to the market
- Removes reliance on expensive skilled labour on site
- Cost certainty with no waste
- Very light weight compared to heavy concrete shafts vastly reducing foundation costs
- Ideal lift frame includes for everything required for lift installation, all lifting beams, pit ladder and does not require scaffolding, building in of specialist inserts along with many other benefits
- Enables our clients to provide a much-simplified lift shaft which is designed for OFFSITE manufacture, with fire lining that can be completed prior to site assembly, no on site cutting and patching required
- Requiring no landing rebates, simplifying construction on and OFFSITE maintaining full fire integrity



Click on the link below to see our time-lapse video of an Ideal Lifts Frame System installation.



The *Ideal Lifts Frame System* is an innovative stand-alone structure that negates the need for traditional concrete lift shaft construction. Smarter than traditional construction, its unique design ensures that only a standard lift shaft is required. We understand about build time and budget, which is why our aim is to offer cost effective and time reducing solutions.

Company Profile:

Ideal Lifts Limited specialise in OFFSITE passenger lifts designed for modern methods of construction (MMC).

Established in 2003, we have many years' experience in the lift industry, with people who want to 'do things differently'.

People are the core of our business, and we believe in the value of collaborative relationships. At Ideal Lifts, we pride ourselves on offering a partnership approach in which we view ourselves as part of the build team rather than an external supplier. We appreciate the benefits of long-term supplier relationships, reducing overall costs, increasing efficiency and communication, reducing pricing volatility and supply chain consolidation.

Ideal Lifts provide complete solutions which include our innovative Ideal Lifts Frame System. We work with clients from the very start of the process, offering a design and technical support service. Our team can then assist with 'freezing' the lift design details, providing them to the professional team, and with continued technical support ensuring a successful completion to what is usually one of the most complex parts of a build project.

Full details of the company's range of products and technical information can be seen in current literature and on the company website at www.ideallifts.com.

Our passenger lift range are suitable for a variety of applications including residential, education, health care, office buildings, retail and commercial use.

All our products are of high quality, safe and reliable. They comply with current Statutory Regulations, (including European Standards) and those covering Health and Safety (H&S), and Construction Design and Management (CDM).

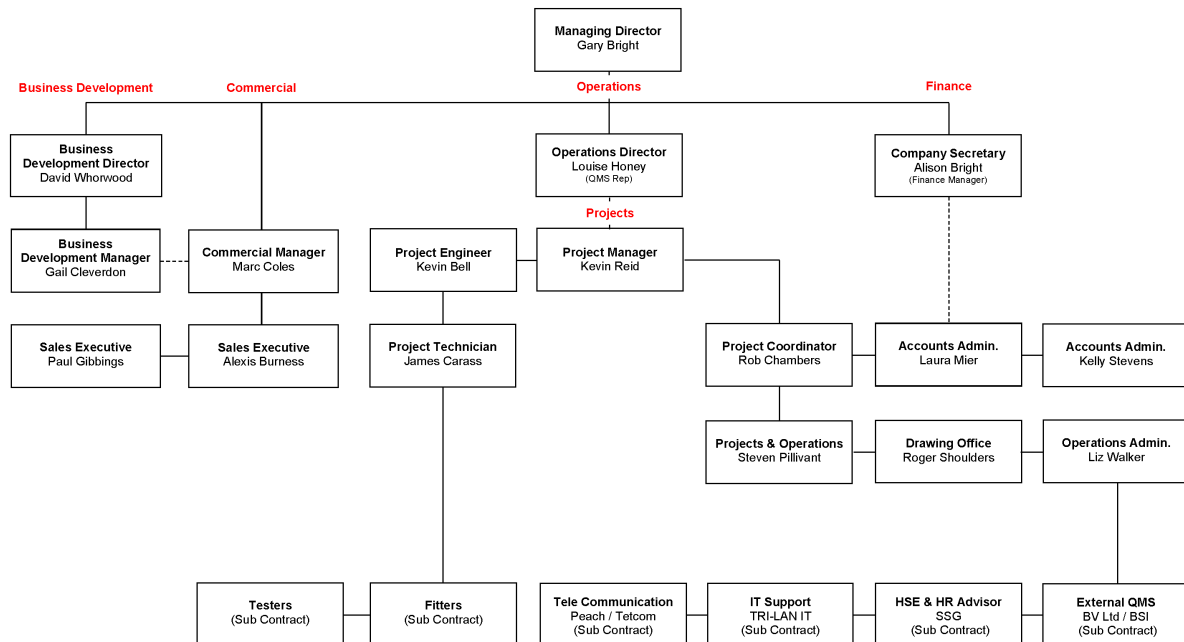
Vision & Mission Statement:

To further develop and build on our experienced and customer focused team, which to date has completed in excess of 500 lifts installations. To offer both traditional and innovative core products and technologies to a UK market and customer base.

Ideal Lifts Ltd. will market, supply and install a comprehensive and competitive range of lifts that are safe, reliable and of good quality, and which meet customers identified needs and requirements.

Company Structure Overview:

Ideal Lifts Ltd
Company and Management Structure
July 2018



Key Business Strategies:

- To remain a private company, funded where necessary by the owners
- Growth of the business will be funded through profit and private investment, and it is not intended to seek loans from financial institutions
- Focus on the core business of installing passenger lifts within Off-Site/Modern Methods of Construction (MMC) meeting regularly with Timber Frame, Modular and Light Gauge Steel (LGS) manufacturers and developers
- Collaborate with Timber Frame, Modular & LGS manufacturers, designers and clients enabling cost effective lift systems to be developed to suit their needs
- Differentiate Ideal Lifts Ltd. from the general passenger lift market with enhanced customer service and focus; including dedicated project management and attending site prior to lift installations
- Offer technical advice to customers, providing effective solutions to their lift requirements
- Continue to identify alternative products that may replace or supplement our existing range of lifts
- Product safety is paramount, and any new product offered for sale by Ideal Lifts Ltd. must meet all H&S (and any other Statutory and European) requirements, and have been in use in the market for at least 12 months
- To subcontract the management of servicing and repair of company products via Ideal Lifts Service Ltd. wherever possible
- To carefully select the customer base from reputable clients, main contractors, developers, architects, Local Authorities and approved private individuals
- Seek new markets/applications for products
- To expand the management team with experienced personnel as the business/need grows

Health and Safety:

Ideal Lifts Ltd. considers environmental management to be of prime importance and is fully committed to fulfilling all environmental responsibilities as well as continuous improvement of environmental performance. As such Ideal Lifts Ltd. will work with clients, contractors, suppliers and the workforce towards achieving this goal.

All persons conducting activities under the name of Ideal Lifts Ltd. will adhere to the company's Environmental Policy.

It is the policy of Ideal Lifts Ltd. to:

- Understand and comply with all legal requirements, codes of practice and regulations
- Organise operations in order to minimise pollution and disturbance to neighbours and the general public
- Provide assistance, training and information that may be necessary to personnel at all levels
- Use materials and resources with regard to long-term sustainability
- Employ a consistent framework for the management of environmental issues across all its operations
- Audit environmental performance

The successful management of environmental issues will be achieved by:

- Identification and management of environmental risks and aspects
- Prevention of pollution
- Minimisation of waste
- Provision of prompt response to incidents and emergencies
- Promotion of environmental issues and good practice
- Reviewing and reporting on the content and implementation of this policy

Ideal Lifts Ltd. utilises the services of an external company to fulfil the role of Health, Safety & Environment Advisor (HSE Advisor):

- **SSG Training and Consultancy** are appointed as Competent Persons under the Management of Health & Safety at Work Regulations to advise the Director Responsible for HSE and Commercial Manager on matters of health, safety and environmental policy, management, good practice and legislation.

General Project Information:

Ideal Lifts Ltd. offers both standard and bespoke products, and specialist services to meet each customer's needs. Products are detailed in brochures and on the company website for customer selection. Requirements differ from one customer to another, as well as from one contract to another, and therefore each tends to be quoted for the specific contract.

Once the customer accepts a proposal, or an order is placed, it is recorded and reviewed to establish that the requirements of the instruction are:

- Adequately defined and documented
- Any differences from the proposal/quotation are resolved prior to formal acceptance
- The company is capable of fully satisfying the customers' requirements, including delivery, installation, test and hand-over
- Statutory and Regulatory requirements are met

In addition to the original order (instruction) and contract specification, the customer may also request additional/variation work be undertaken by the company.

In these circumstances, the work required is documented and agreed with the customer prior to execution to ensure that no ambiguity exists and that customer requirements are met.

Indicative Project Summaries:

Royal Leamington Spa, Warwick

Installation of 6 passenger lifts for phase 1 of this development which comprised a mixture of luxurious apartments, penthouses and family homes.

As part of this prestigious mixed-tenure development the client requested 8 persons' passenger lifts, which were installed with our Ideal Lifts Frame System within timber framed construction.

The client required an Enhanced car finish with granite car floors and quality laminated wall boards combined with stainless steel; "exceeding our expectations on the finishes". Following the successful completion of Phase 1 Ideal Lifts Ltd. were appointed with the installation of a further four lifts as part of Phase 2 of the development.

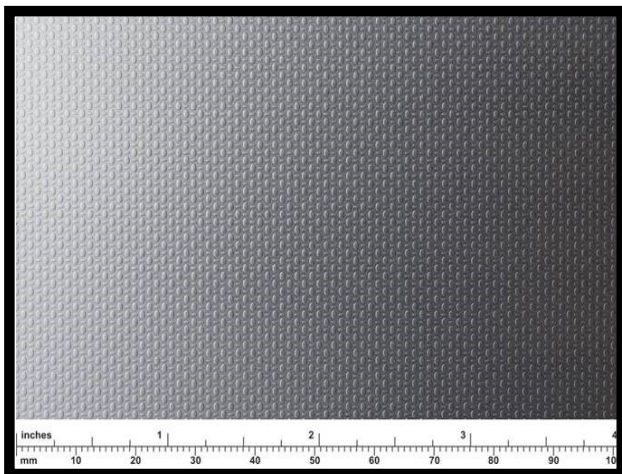


Crawley, West Sussex

Ideal Lifts Ltd. installed five separate 8-person passenger lifts that were fully compliant with Part M of the Building Regulations for disabled persons.

The design incorporated our Ideal Lifts Frame System designed for OFFSITE construction methods to replace conventional shaft construction. This project comprised of two blocks. The first was a 5/6 storey block with 66 flats and the second a 7-storey block behind with 26 flats.

The development was mixed tenure. The Housing Associations 'Employers Requirements' had a number of distinct requirements including robust patterned reinforced stainless-steel wall panels, polished stainless-steel mirrors and premium doors in lieu of industry standard 40/10 doors.



(Enlarged image of patterned linen stainless steel reinforced car wall panels)

Insurances:

Employers Liability

Insurer: CNA Hardy Insurance via Pen Underwriting Ltd
Policy Number: CC000/MLC/22497353
Period of Insurance: 12 months from 08th February 2018
Limit of Indemnity: £10,000,000 any one occurrence
Clauses: Indemnity to Principle

Public & Products Liability

Insurer: CNA Hardy Insurance via Pen Underwriting Ltd
Policy Number: CC000/MLC/22497353
Period of Insurance: 12 months from 08th February 2018
Limit of Indemnity: £5,000,000
Public Liability any one occurrence
Products Liability in the aggregate during any one period of insurance
Clauses: Indemnity to Principle

Contractors All Risks

Insurer: CNA Hardy Insurance via Pen Underwriting Ltd
Policy Number: CC000/MLC/22497353
Period of Insurance: 12 months from 08th February 2018
Limit of Indemnity: Maximum Contract Value £500,000

Professional Indemnity

Insurer: CNA Hardy Insurance via Pen Underwriting Ltd
Policy Number: 10244927
Period of Insurance: 12 months from 22nd March 2018
Interest: Indemnity in respect of the insured's legal liability in connection with failure in the provision of professional services in connection with the business activities. Subject to the terms and conditions of the policy of insurance(s) in force.
Limit of Indemnity: £5,000,000
Clauses: Bona Fide Sub Contractors Clause

Trade Associations:

- Lift & Escalator Industry Association (LEIA)
- Structural Timber Association (STA)
- Buildoffsite

Quality Memberships and Schemes:

- Quality approved to ISO 9001
- Accredited to OHSAS 18001 Occupational Health and Safety Management
- SMAS Work Safe Approved Contractor
- Structural Timber Association (STA) Assure Gold
- CHAS - Contractors Health and Safety Assessment Scheme



Essential

Available on models

IL3

IL4

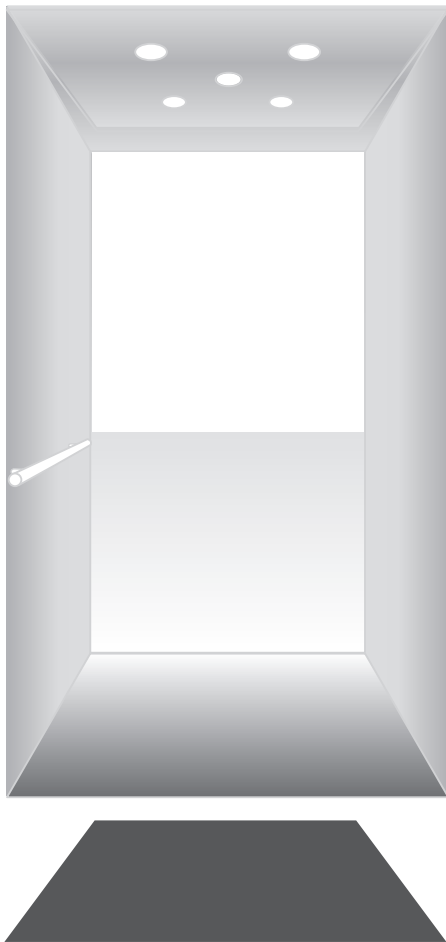
Click on the link below to see a 360° video of the internal car finish



Internal Car Design

Side and Back Wall	Satin Steel Lacquered Effect
Front Wall Panel and Header	Satin Stainless Steel
Control Console	Satin Stainless Steel
Car Doors	Satin Stainless Steel
Handrail	Satin Stainless Steel
Ceiling	White with LED Downlighters
Floor	Recessed for finishing by others or grey anti slip floor by Ideal Lifts
Mirror	Half height and full width to rear wall
Digital Displays and Button Illumination	LCD Mini

The Ideal Essential Car is our most popular choice of finish. The essential car is robust yet stylish and being of standard design is our cost effective choice.



- ▶ **Standard ceiling** choice, white with LED down-lighters.
- ▶ **Standard wall** choice, our most popular satin stainless lacquered effect to reduce those unwanted hand marks.
- ▶ **Standard handrail** to compliment style and functionality.
- ▶ **2 floor** choices, recessed for finishing by others or grey anti slip floor by Ideal Lifts.

Enhanced

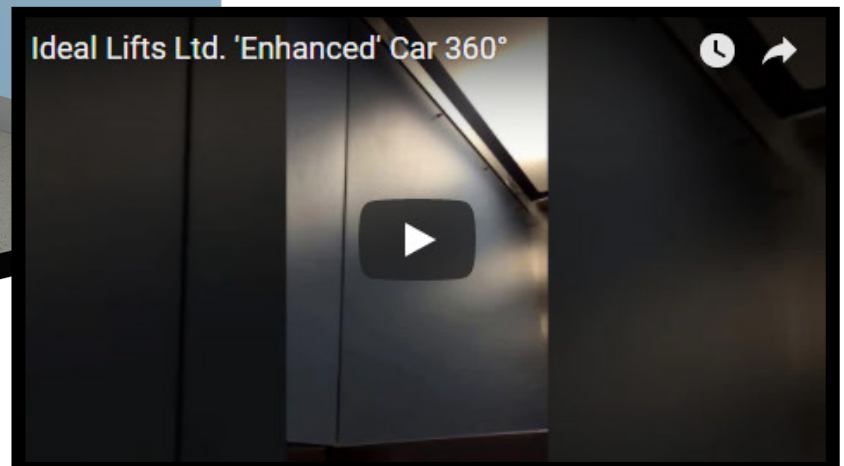
Available on models

IL2

IL3

IL4

Click on the link below to see a 360° video of the internal car finish

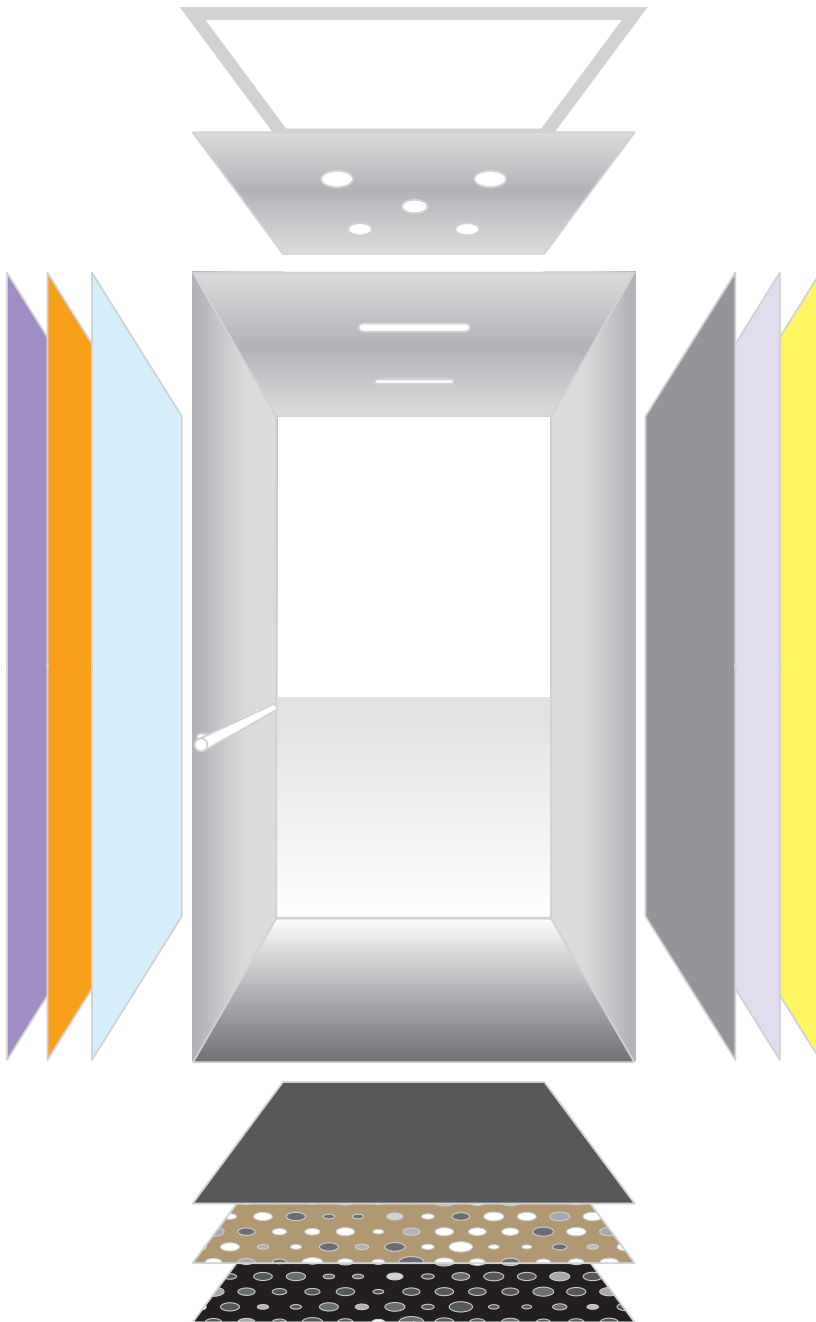


Internal Car Design

Side and Back Wall	China Blue Laminated Wallboards (Standard)
Front Wall Panel and Header	Satin Stainless Steel
Control Console	Satin Stainless Steel
Car Doors	Satin Stainless Steel
Handrail	Satin Stainless Steel
Ceiling	White with LED Downlighters
Floor	Recessed for finishing by others or grey anti slip floor by Ideal Lifts
Mirror	Half height and full width to rear wall
Digital Displays and Button Illumination	LCD Mini

*** Please note: Any design choices other than the 'standard' design above may be subject to additional cost or time implications***

The Ideal Enhanced Car unifies design and functionality in a way that makes passengers feel comfortable and safe. Combine style, colour and options to suit your building. Carefully selected materials enhance the look and feel.



▷ **4 ceiling** choices with a range of lighting options.

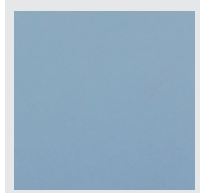
▷ **18 wall** choices ranging from our most popular satin stainless lacquered effect to reduce those unwanted hand marks, to traditional satin stainless steel and 12 quality laminated wall boards.

▷ **7 hand rail** choices to compliment style and functionality.

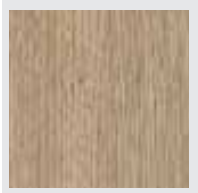
▷ **10 floor** choices in a range of finishes and colours.

Wall Finishes

Laminates



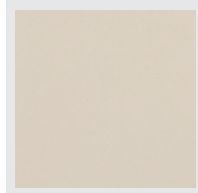
(ENHANCED - STANDARD)
CHINA BLUE



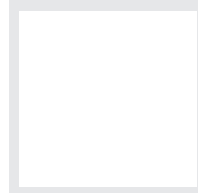
SMOKED OAK



FINN BEECH



SANDSTONE



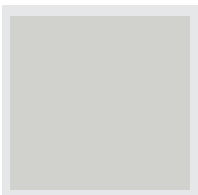
WHITE



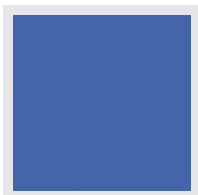
RED (GLOSS)



BERMUDA



FOLKSTONE



OCEANO



WHITE ASH

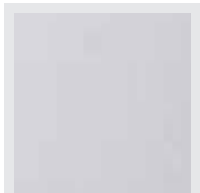


GRAPHITE



BURNT STRAND

Stainless Steels



SATIN



LEATHER



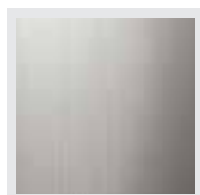
LINEN



CHECKS

While every effort has been made to represent colours and patterns as accurately as possible, please note that final finishes may differ from those shown here.

Skinplates

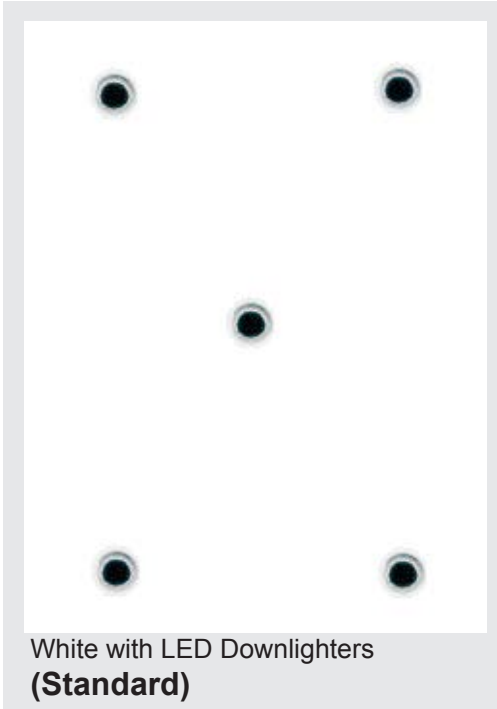


(ESSENTIAL)
STAINLESS STEEL LOOK



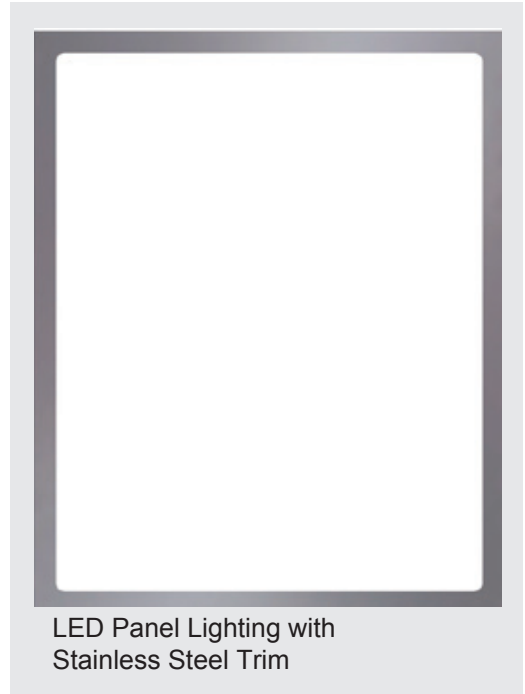
STAINLESS STEEL

Ceiling Options



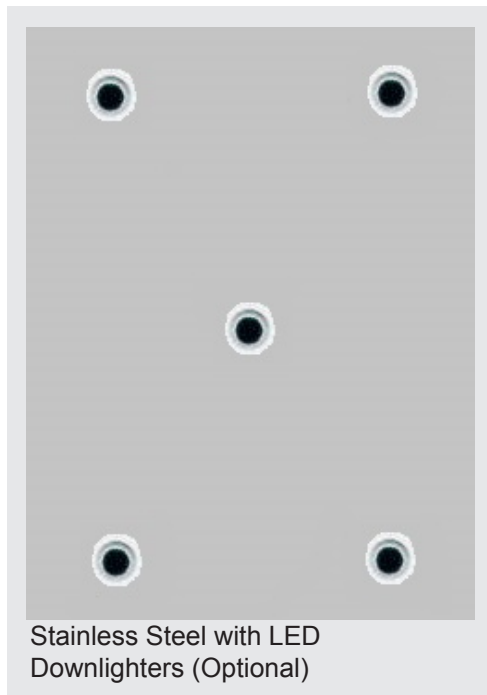
White with LED Downlighters
(Standard)

(BREEAM compliant)



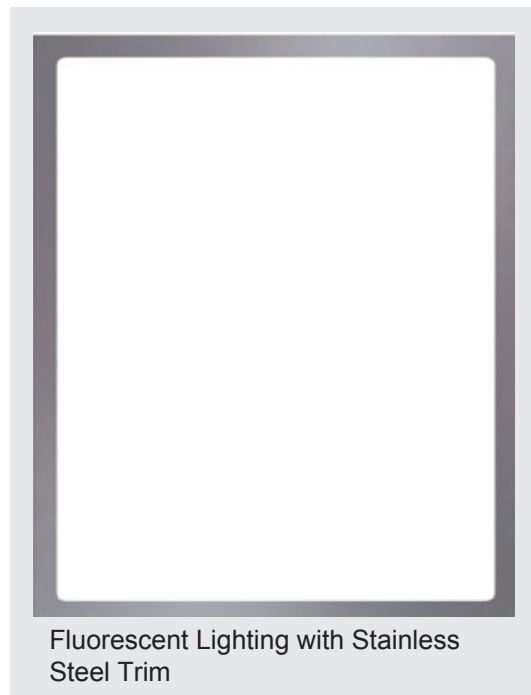
LED Panel Lighting with
Stainless Steel Trim

(BREEAM compliant)



Stainless Steel with LED
Downlighters (Optional)

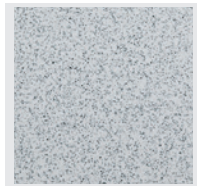
(BREEAM compliant)



Fluorescent Lighting with Stainless
Steel Trim

Floor Finishes

Anti Slip Floors



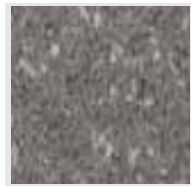
GREY (STANDARD)



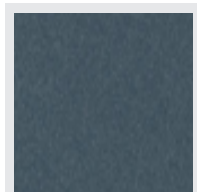
BEIGE



BLACK



GRANITE



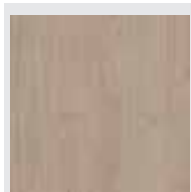
BLUE STEEL



GREY CONCRETE

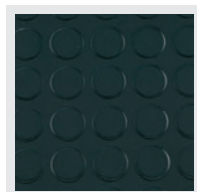


RUBBER SAND

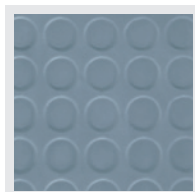


OAK

Rubber Stud Floors



BLACK



GREY

While every effort has been made to represent colours as accurately as possible, please note that final finishes may differ from those shown here.

PLEASE NOTE:
Black floors are not EN 81-70 or Part M compliant.

Handrail Options



(Part M. compliant)
CURVED TUBULAR SATIN STAINLESS STEEL **(STANDARD)**



RECTANGULAR SKINPLATE



STRAIGHT TUBULAR POLISHED STAINLESS STEEL



RECTANGULAR STAINLESS STEEL



(Part M. compliant)
CURVED TUBULAR POLISHED STAINLESS STEEL



(Part M. compliant)
CURVED TUBULAR GOLD



(Part M. compliant)
CURVED TUBULAR BLACK

Car Operating Panel (COP)



Standard COP



Standard COP in Essential Car



Standard COP in Enhanced Car

Landing Door Entrances



Standard Landing Entrance (RAL 7032)



Optional Satin Stainless Steel



Optional Security Swipe Card Entry



Standard Landing Call Station



Optional Security Key Pad



Optional Security Swipe Card Entry

Optional Full Width Landing Door Entrances

Benefits to Constructors

- Speeds up the completion of communal areas, the area of intense activity by many trades during the latter stage of the building completion
- Prevents damage from building materials falling down into shaft onto lift equipment
- Removes risk of distortion of lift architraves by other trades when making good
- Reduces the need for daywork by lift engineer to gain access and move the lift up and down to fire line inside of shaft entrances
- 2 hour fire rated entrances replacing time consuming site construction whilst achieving fire return walls
- Provides immediate full width entrance protection once landing doors are fitted, improving health and safety on each landing
- Reduces management time, removes the need to stop installing and then return to site after entrances have been "built in"
- The lift installation and testing can be once continuous process

When a Construction Manager with 36 years experience with a National Main Contractor needed a clean and quick way of finishing communal areas, he specified Ideal Lifts full width landing entrances.



Protective Drapes



Optional Protective Drapes



Optional Protective Drapes



Optional Protective Drape Studs



Optional Protective Drape Studs

Ever been let down by your telecoms company?

Optional Digital Communications Platform (DCP*):

A DCP provides the interface between the lift emergency telephone and mobile telephone network in cases when a dedicated hard wired live telephone line is not available. All the features of a land line connection are present (required to comply with lift standards EN81-28).

Normally the DCP unit is installed within the lift machine room or lift shaft. This option depends upon a good signal being available in the lift shaft. Alternative locations up to 3m of the lift shaft, where there is good mobile signal available may also be suitable.

The DCP unit requires a SIM card (supplied by others). This must be a contract SIM and not a pay as you go, and have voice and data capabilities.

The DCP unit requires a 230V single socket within 1m of the lift control (to be supplied by others).

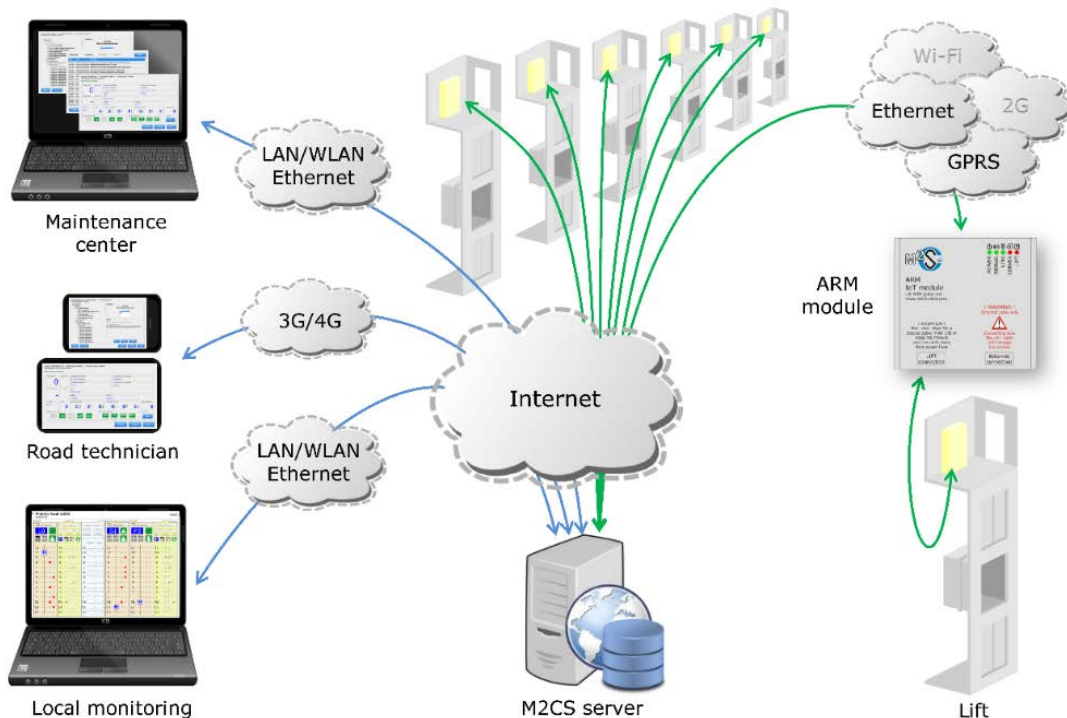
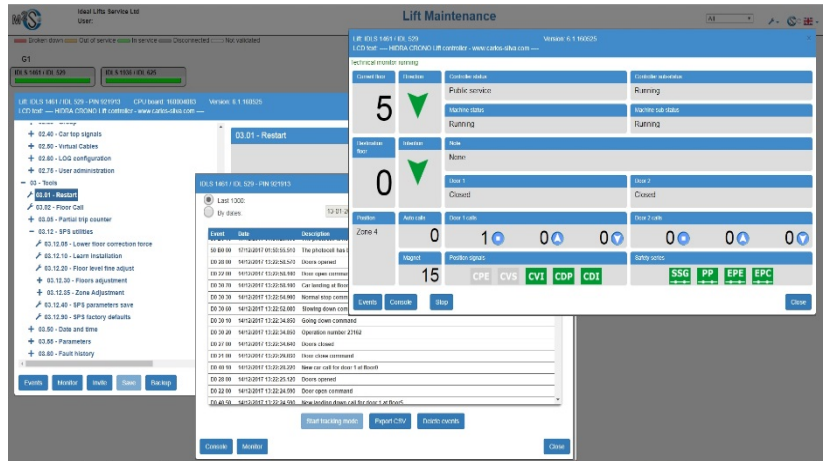
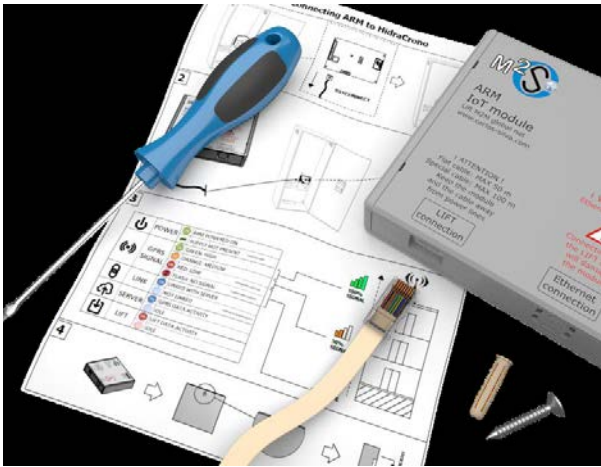


* Supersedes the Global Systems for Mobile Communications (GSM) unit.

Automatic Remote Monitoring (ARM) System

Ideal Lifts are able to:

- Monitor and manage your lift remotely 24/7
- Diagnose and resolve issues without having to visit site
- Improve response time for faults and reduce lift downtimes by knowing which replacement part we may need before we even visit site
- Improve operational efficiency and safety whilst reducing maintenance and callout costs
- Provide peace of mind and be able to respond to faults before you may even be aware of them



Open Protocol Policy

Guidance Notes:

Ideal Lifts has an open protocol policy, installing products, parts and components to our passenger lifts that are widely available, that can be reprogrammed without the need for specialist access codes or equipment.

A classic example is our telephone autodialler, which is a non-proprietary open protocol system and therefore does not require specialist equipment to re-programme new contact numbers enabling the lift to be maintained by other suitably qualified lift companies.

The closed-protocol autodiallers supplied by some are pre-programmed to phone their own office telephone numbers and cannot be re-programmed. We believe this practice is not within the interest of the eventual building owners.

A typical cost to the building owner to subsequently install a replacement autodialler could be £1300-£2000. During the period when the autodialler is being replaced the lift cannot legally be used without another means of communication, causing considerable disruption to the building users.

Ideal lifts also fit widely available open protocol electronic safety edges, and other components, simplifying future maintenance and repair of the lift.

Building owners and those with bulk service agreements, or those wishing to seek alternative tenders for maintenance after the warranty period should take into consideration the above.



Servicing & Maintenance:

Four types of service contract are available to suit you and your lift equipment, each with the flexibility to be tailored to your exact requirements.

During the regular planned maintenance visits our fully qualified lift engineers will inspect, clean, lubricate and adjust components for optimum performance and complete a report, detailing the work carried out.

Short and long-term contracts are available to suit your business and budget.

- No travelling time or mileage charges on callouts
- Free surveys and condition reports
- We adhere to the LEIA code of practice for lift maintenance
- Fully qualified engineers with many years' experience
- A genuine 24-hour emergency callout service
- We are a professional company offering a personal service and a single point of contact when you phone
- Automatically receive job sheets by email on completion
- Transparent pricing structure – No hidden costs
- All engineers are qualified first aiders and are CSCS certified
- Straight forward honest advice
- A rapid callout response service from locally based engineers providing a high level of first time fixes
- Flexible contracts and terms tailored to you and your lift equipment – Short and long-term options
- A strong and highly valued reputation from a company that takes pride in our work and appearance
- Clear lines of communication from a trustworthy and friendly team you can rely upon
- Established supplier network with most spare parts available from stock or next day
- Daily updates on repair and refurbishment projects
- We offer the care, attention and dedication that you and your lifts deserve



Tel: 01837 659999
 Email: info@ideallifts.com
 Web: ideallifts.com

