

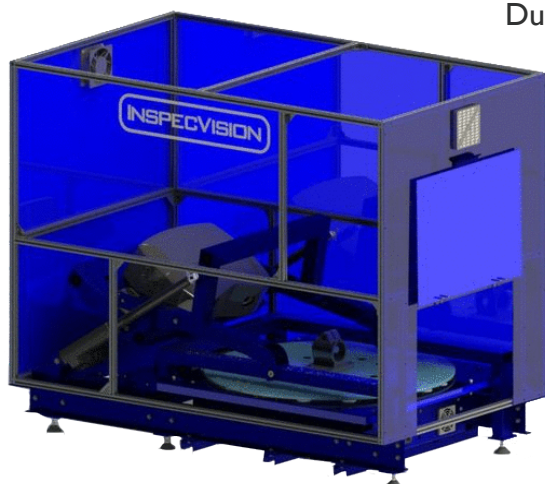
High Speed Castings Inspection

A Castings Inspection Solution For The Automotive & Aerospace Industries

The metal castings industry is very challenging for a variety of reasons. The raw material and energy costs are very high. The applications are usually extremely demanding industries, such as automotive and aerospace.

Most parts require expensive secondary processing such as machining and the overall casting process is quite slow and relatively manual.

It is for these reasons that casting scrappage costs are one of the highest in engineering. The best way to curb these costs is to identify problems at the earliest possible stage of production. Inspection is an essential tool to achieve this goal.



CMM Inspection Is Not Adequate

Unfortunately the existing inspection methods such as CMMs are slow, extremely complicated and expensive both to purchase and to run. In addition conventional CMMs can only be used to measure a limited number of points.



Inspection Is Not Optional

Due to the quality demands of industries such as automotive and aerospace, inspection is not an option.

A Complete Solution Is Needed

What is needed is a system which can inspect castings fully, with surface measurement as well as measurements of the overall form of the casting.

The system must also be available in a wide range of sizes and accuracies to ensure it can meet the needs of your facility.

The OptiScan3D Solution

The OptiScan3D is a high accuracy, non-contact white light scanning system.

The OptiScan model OS350 is a fully automated 3D scanner. It uses the latest vision techniques to acquire up to 10 million measurements of the castings surface with each scan.

Two axis repositioning is then used to automatically rotate the cast part in front of the scanning head and tilt the scanning head to change the scanning angle.

This arrangement creates a viewing hemisphere which allows the system to scan the visible surfaces of most cast parts in just 2 or 3 minutes.

Once the surface measurements have been acquired they are automatically compared to the CAD solid model for inspection purposes. Alternatively they can

be loaded into a 3D CAD package for reverse engineering.

The OptiScan system comes with free 3D inspection software to perform all core, intermediate and some advanced inspection functions including; loading of 3D CAD models, alignments, creation of reports, 3D deviation maps, GD&T, airfoil inspection and PDF output.

A Highly Automated System

The most impressive feature is the level of automation. The entire inspection process can be triggered with a single click or the scan of a barcode.

It measures all surfaces and features and requires no preprogramming.

Casting Reverse Engineering

OptiScan3D enables you to reverse engineer free-form surfaces and geometric entities from the point cloud data back to a variety of native CAD formats.

OptiScan3D Inspection Report

Within 5 minutes reports can be generated to show conformity to dimensional requirements (including First Article Inspection reports). See figures 1 - 5.

The OptiScan3D white light scanning system has a large range of sizes accuracies.

For more information on how InspecVision systems can help you please contact our team at sales@inspecvision.com.

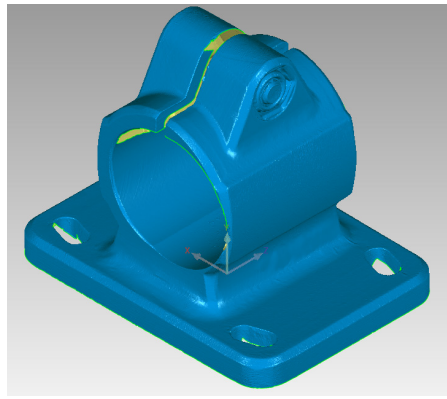


Figure 1: Scanned Casting

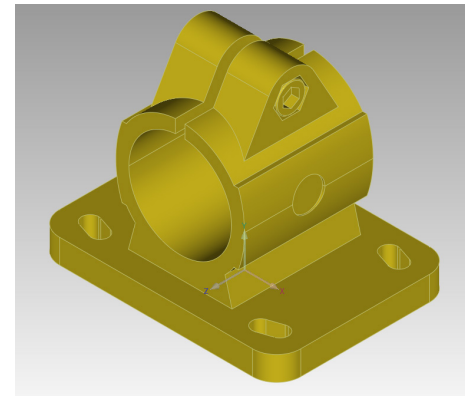


Figure 2: 3D Solid Model (CAD)

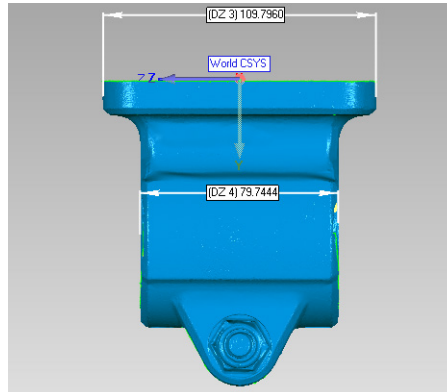


Figure 3: Inspection Report 1

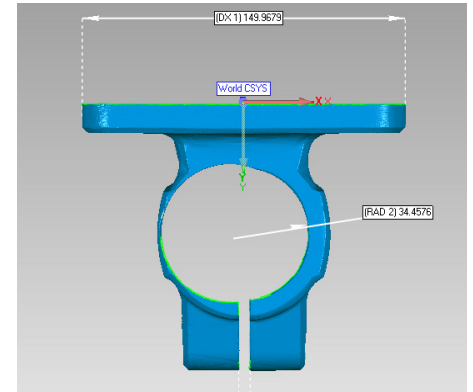


Figure 4: Inspection Report 2

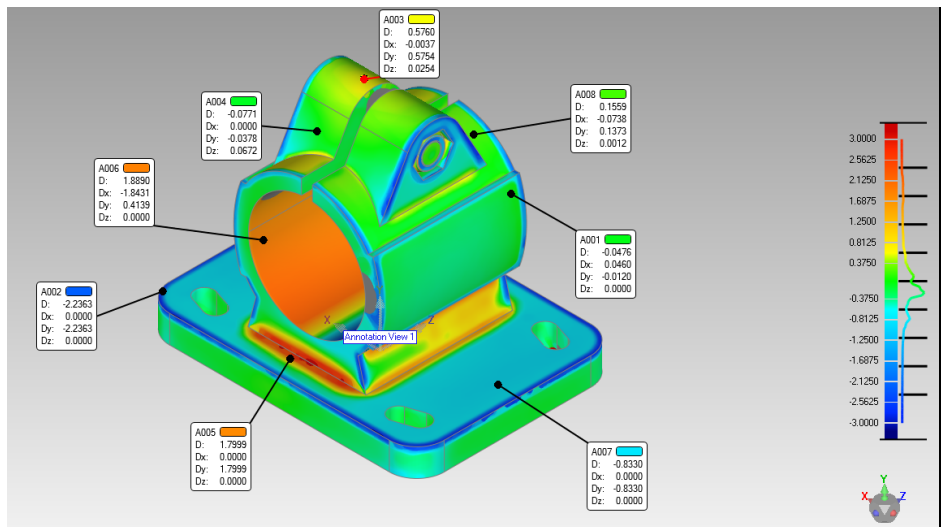


Figure 5: Casting Deviation Map

