

INSTALLATION OF YOUR ENVIROTEC BATHING SHOWER ENCLOSURE IS QUICK AND EASY. HOWEVER, PLEASE READ THESE INSTRUCTIONS CAREFULLY AS THE MANUFACTURER CANNOT TAKE RESPONSIBILITY FOR ISSUES ARISING FROM INCORRECT INSTALLATION.

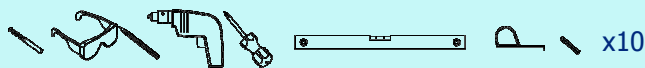
We recommend that the Envirotec Bathing Shower Enclosure is installed by a suitably qualified person and that local building and water regulations are followed. Check for concealed water and gas pipes and electrical cables within the building structure prior to drilling.

Wear suitable protective equipment i.e. safety glasses, gloves etc. during installation

The surface finish of every Envirotec Bathing Shower Enclosure is designed to give years of trouble free usage but it should be protected with a soft blanket or similar during installation. Be sure to use a suitable protection within the tray while installing the product and DO NOT place tools or hard objects such as screws etc. on the gloss surface of the shower as scratching can occur.

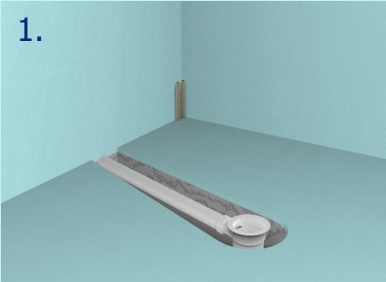
The Envirotec Bathing Shower Enclosure is supplied in two parts to ease access into the bathroom. Each shower component should be carried by two people to avoid damage while climbing stairs, negotiating corners etc. DO NOT DRAG THE ENVIROTEC BATHING SHOWER ENCLOSURE ALONG THE FLOOR.

CLEANING - USE ONLY WATER AND DETERGENT, DO NOT USE AGGRESSIVE HIGH Ph, ACIDIC OR ABRASIVE CLEANERS, ETC.



**This is all you need to begin the installation of an Envirotec shower!**

1.

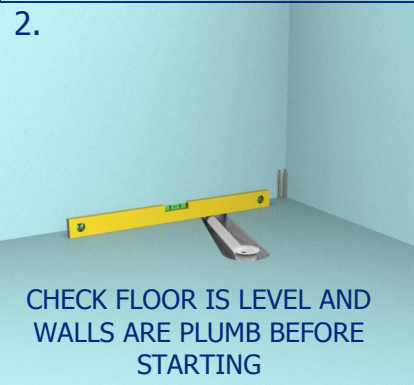


- Water supply (hot / cold depending on shower type being installed),
- Waste fitting (below floor type shown) and possibly an electrical supply if an electric shower is being installed.

Follow shower valve / electric shower manufacturer's guidelines for details of specific requirements

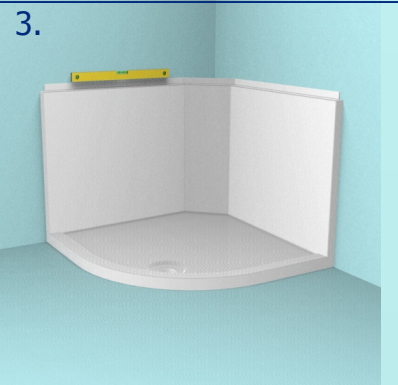
IF YOU NEED TO RUN YOUR WASTE ABOVE THE FLOOR, YOU WILL NEED AN ENVIROTEC BATHING LIFTING KIT (AVAILABLE SEPERATELY). PLEASE FOLLOW INSTRUCTIONS SUPPLIED WITH THE LIFTING KIT OR ON-LINE. WASTE POSITION DETAILS ARE AVAILABLE IN PRODUCT SPECIFICATION SHEETS. (ALSO AVAILABLE ON-LINE)

2.

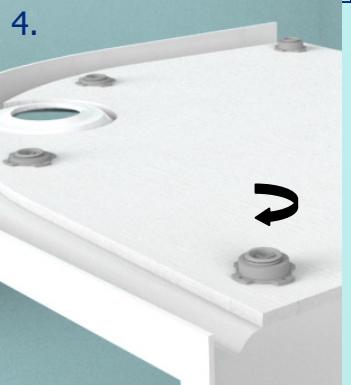


CHECK FLOOR IS LEVEL AND WALLS ARE PLUMB BEFORE STARTING

3.

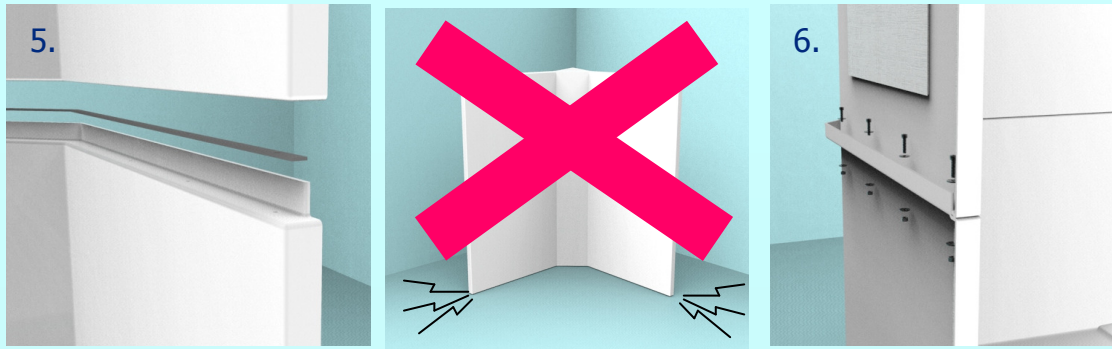


4.

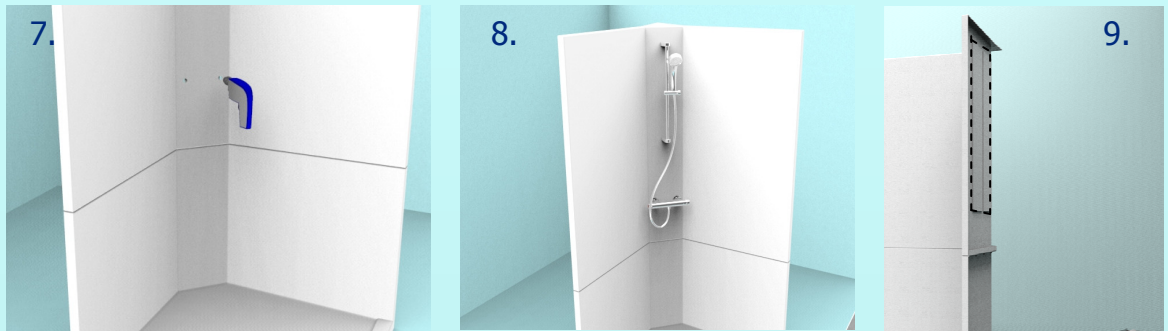


Place the tray section of the Envirotec Bathing Shower Enclosure into position and check for level along both walls (3). Also check that all feet are in contact with the ground (the tray should feel solid with no "spring" when tested). If adjustment is required, carefully turn the tray over using a soft blanket on the floor as protection and adjust the feet until correct floor contact is achieved (4).

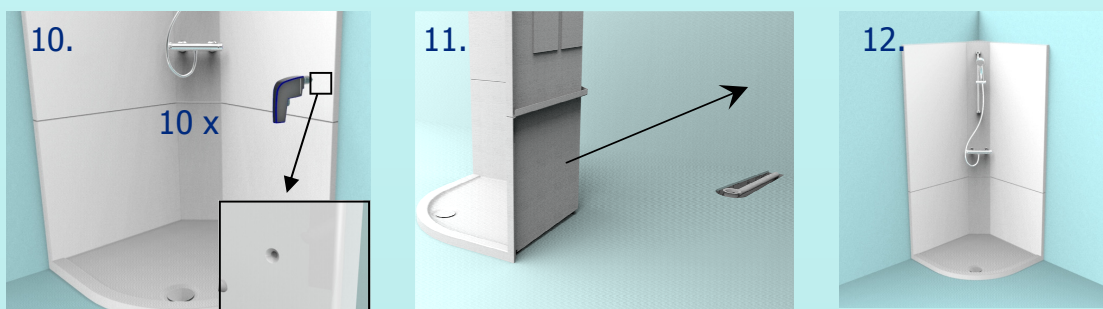
Lift the tray section away from the bathroom walls and attach the upper half of the shower. Note the gasket between the two halves (5) — care should be taken to avoid damage to it. Install the nuts and bolts in each hole in the joint, placing a washer under every nut and every bolt (6). DO NOT OVER TIGHTEN THE BOLTS AS DAMAGE TO THE SHOWER MAY RESULT



Follow the manufacturers instructions and mark / drill holes to suit the shower valve or electric shower being fitted (7). Install the shower valve (8). Valves and risers may be attached to the flat wall panels if they are drilled through only to the timber core (9). Screws should secure into the timber. TIP— apply a piece of masking tape over the area to be drilled before attempting to drill the Envirotec Bathing Shower Enclosure. The tape will prevent the drill from skating and scratching the surface.



Lift the Envirotec Bathing Shower Enclosure back into the corner and mark through the pre drilled holes in the edges as shown. Drill and install suitable wall plugs according to the wall type (10). Lift the Envirotec Bathing Shower Enclosure back into its final position, connecting the water (and electrical) supply while doing so (11). Flexi pipes should be used for the water connections.



Install the waste fitting and screw the Envirotec Bathing Shower Enclosure to the walls taking care not to over tighten the screws (12). The shower door may now be installed according to manufacturers instructions (13) and can be attached directly to the Envirotec Leak free shower enclosure.

