

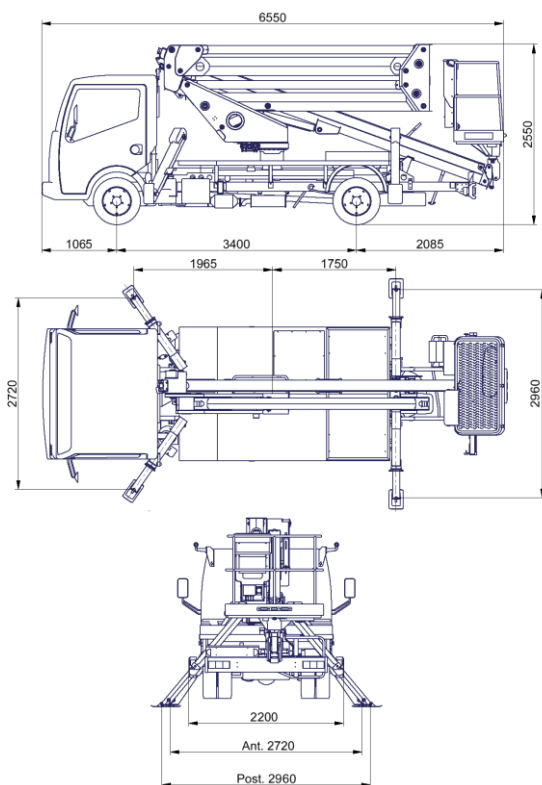
ARTICULATED TRUCK MOUNTED PLATFORMS SPECIFICATION ZED20.2 NISSAN 3,5t



TECHNICAL DATA

- Double pantograph + telescopic boom (main boom + one extension)
- Sigma boom movement enabled by connecting rods
- 640° turret rotation
- Proportional, electrohydraulic controls in basket
- Anti-slip, aluminium flatbed decking
- Basket base in composite material with aluminium guardrails
- 65° right + 65° left hydraulic basket rotation
- Automatic hydraulically actioned basket levelling
- 4 hydraulic outriggers with ground pressure sensors
- Hydraulic system operated by vehicle's PTO
- Buzzer indicating PTO engaged
- Hour meter
- 230 V AC CE electrical socket in the basket
- Standard boom colours blue (RAL 5017) or white (RAL 9003)
- CE Certified

DIMENSIONS

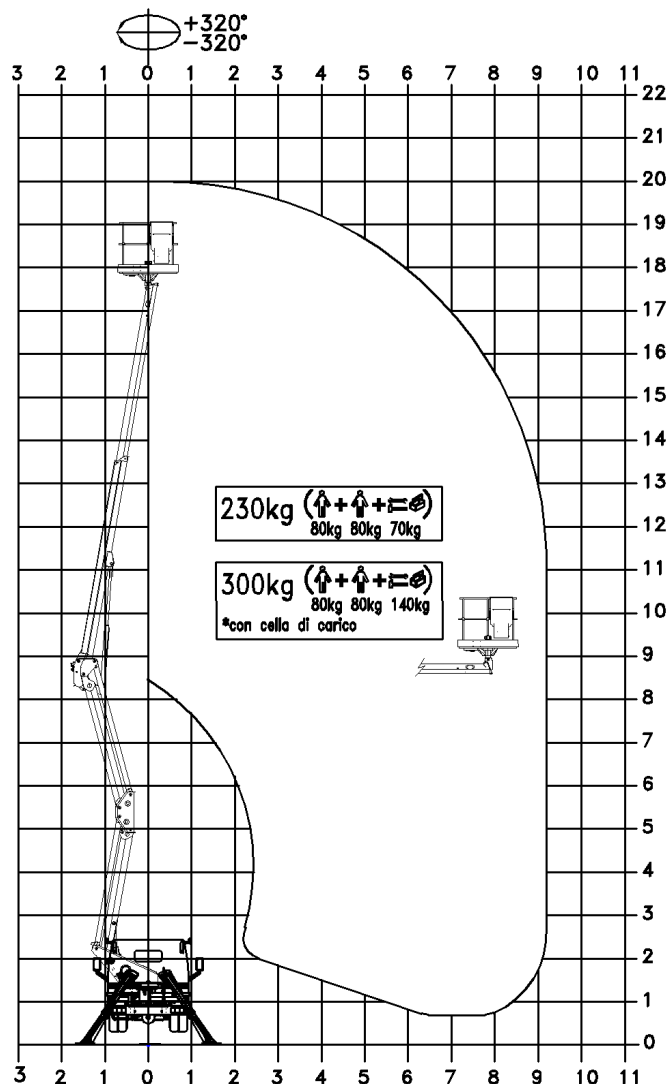


PERFORMANCE

Working height	20 m ca.
Platform height	18 m ca.
Working Outreach	9,2m ca.
Capacity (2 people incl.)	230/300kg*
Basket dim.	1400x700x1100mm
GVW min.	3,5t

*With loading cell

WORKING ENVELOPE



I dati contenuti nella presente scheda non sono impegnativi. Ci riserviamo di apportare le modifiche in qualsiasi momento senza preavviso. Le informazioni riportate hanno solo scopo illustrativo.



Unità operative: Rovereto, Dolo e S. Giuliano Milanese

CTE S.p.A.

Sede e Stabilimento di Rovereto (Tn): via Caproni, 7
tel. +39 0464.48.50.50 - fax +39 0464.48.50.99

Stabilimento di Bertinoro (Fc): viale 2 Agosto, 670
tel. +39 0543.44.88.30 - fax +39 0543.44.83.43

e-mail: info@ctelift.com

CTE UK Ltd - Enderby Leicestershire - UK
CTE FRANCE Sas - Achères - Saint Clair du Rhône - France



Punti assistenza vendita

Bari, Bologna, Cagliari, Catania, Cesena, Dolo, Fano, Ferrara, Firenze,
Forlì, Genova, Milano, Modena, Napoli, Palermo, Pisa, Pistoia, Perugia,
Pordenone, Ragusa, Roma, Rovereto, Sassari, Taranto, Torino, Udine.



Cod. 72144 (10/2012)