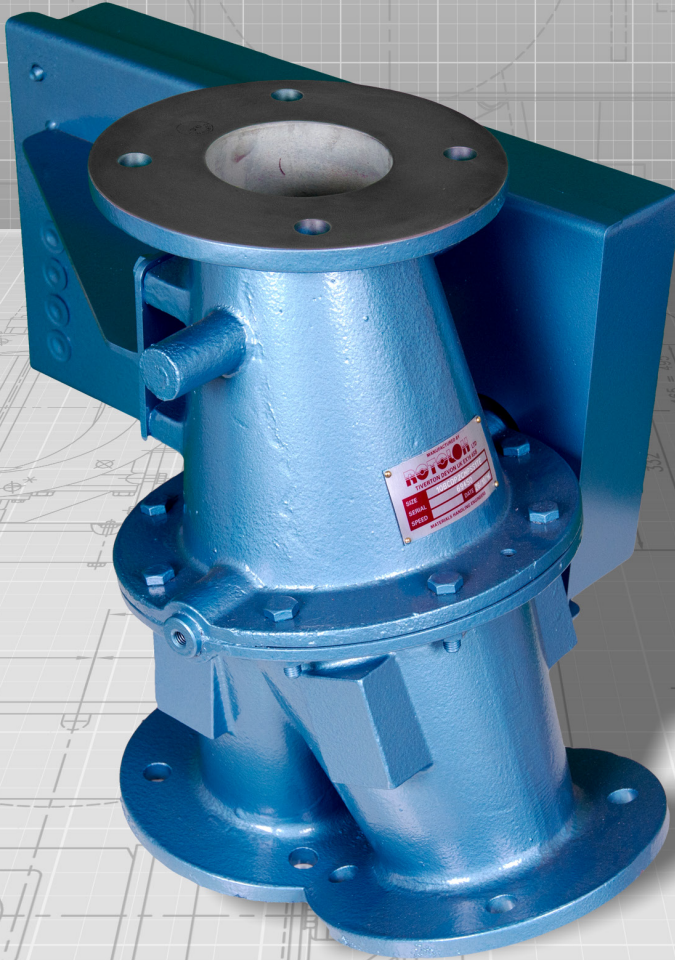


ROTOLOK

everything under control...



ROTOLOK USA

Industrial Ventures II
2711 Gray Fox Road
Monroe
North Carolina
28110
United States of America
Tel: +1 (704) 282 4444
Fax: +1 (704) 282 4242
www.rotolok.us
sales@rotolok.us



ROTOLOK CONVEYING DIVERTER

INTRODUCTION

Rotolok manufacture a full range of Flap, Plug and Weigh Diverters, which cover all applications in the pneumatic conveying industry to reroute powder, pellets or granules from one discharge to another.

For standard two way diversion applications, Rotolok specify the Flap type Diverter Valve range.

SPECIFICATION

BODIES

Cast in Aluminum, Stainless Steel or Cast Iron

FLAP VALVES AND SPINDLES

Mild Steel or Stainless

WIPER SEALS

Polyurethane or food quality rubber. Temperature limit 356°F

SHAFT SEAL

Rubber 'O' ring

ACTUATION

Air Cylinder or Manual Lever

PNEUMATIC VERSION

Complete with five-port two-way single solenoid return valve

LIMIT SWITCHES

Available to indicate open/closed conditions. Pneumatics and switches housed in guards

IMPORTANT FEATURES

- Compact design
- Small divert angle
- Low pressure drop
- Smooth internals
- Pneumatic or Manual
- Wide range of materials
- Higher pressure gives greater seal
- Dust tight to 20 p.s.i.
- Easy access and maintenance
- Flanged or Spigotted Ends
- Pneumatics and switches housed in guards.

THE FLAP TYPE DIVERTER VALVE

The Flap Type Diverter consists of a robust body manufactured in two sections, split at the centre flange for ease of access to the internal sealing flap.

With the special cone transition at the inlet, the sealing area within the cone forms a complete parabola and therefore an efficient internal seal can be maintained without resorting to sealing ledges - increasing the conveying line pressure, the rubber wiper seal more effectively.

Internals are clean, with no lodgement points, and the transition from one line into two is gradual, limiting turbulence and therefore pressure drop. Similarly, by the streamline design, the valve will also feed from two lines into one - again with no lodgement areas.

Choice of materials can cater for the majority of applications and by plating the body and internal components the semi-abrasive fields can be covered.

Special demand has necessitated the manufacture of a range of 30° divert angle valves to compliment the traditional ranges of 22½° divert angle valves. They are obviously more compact than the 22½° range but have a slightly greater pressure drop due to the increased angle.

Further demands of industry have led to the manufacture of two types of connections: Flanged and Spigotted.

FLANGED CONNECTIONS

Simple and robust, bolt on flanged ends drilled to match international standards for bolted joints



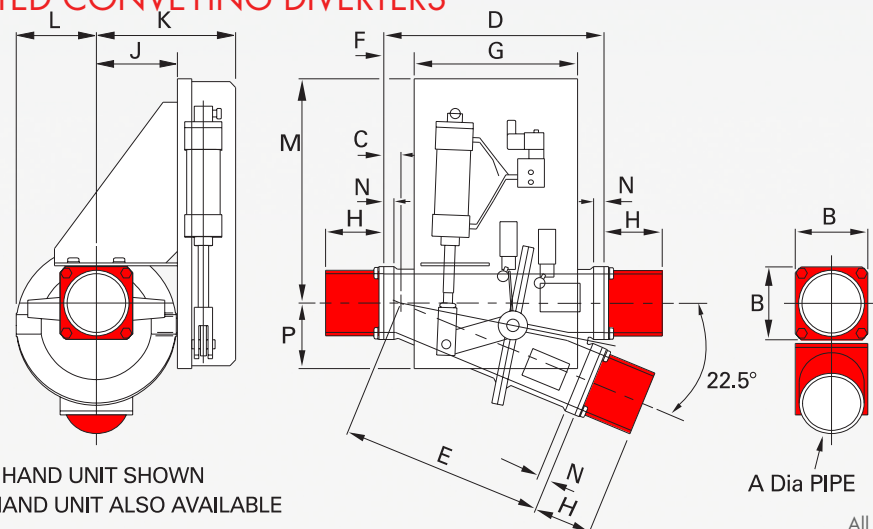
SPIGOTTED CONNECTIONS

The spigotted ends are connected to pipework with 'Blo-line' type couplings, facilitating quick access in case of blockages. It also gives flexibility in pipe length accuracies and misalignment variation. Furthermore, the Rotolok spigotted ends are not of cast fixed length, but bolted on and fabricated of variable length. This enables the ends to be supplied to fit exactly to existing pipework.





0° x 22.5° SPIGOTTED CONVEYING DIVERTERS

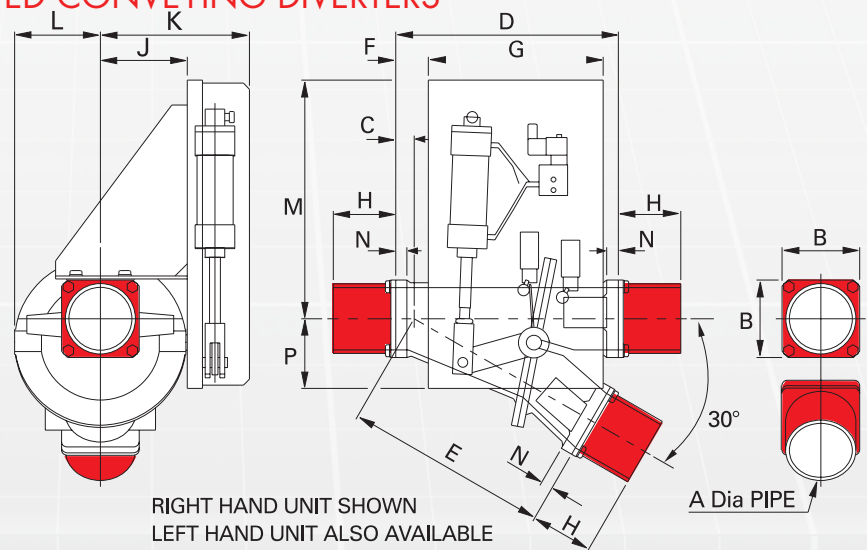


RIGHT HAND UNIT SHOWN
LEFT HAND UNIT ALSO AVAILABLE

All dimensions are in inches

SIZE	A PIPE	B	C	D	E	F	G	H	J	K	L	M	N	P
2"	2" N/B	3 3/4"	3/4"	11"	10 3/16"	0"	9 7/8"	4"	3 5/8"	7 5/8"	3 5/8"	13"	3/4"	3 1/4"
2 1/2"	2 1/2" N/B	4"	3/4"	11 3/4"	11"	1/8"	9 7/8"	4"	4"	8"	4"	13"	3/4"	3 1/4"
3"	3" N/B	4 1/2"	3/4"	14"	13"	1"	9 3/4"	4"	4 3/8"	8 1/2"	4 3/8"	13"	3/4"	3"
4"	4" N/B	5"	1 3/16"	15 3/16"	14"	2"	11 1/4"	4"	5 5/8"	9 5/8"	5 1/2"	15 3/8"	3/4"	4 1/2"
5"	5" N/B	6"	1 3/16"	19 1/16"	17 7/8"	4"	11 1/4"	4"	6 3/8"	10 3/8"	6 3/8"	15"	3/4"	4 7/8"
6"	6" N/B	7 3/4"	1 3/8"	22 3/8"	21"	4 3/4"	11 1/4"	4"	7 1/4"	11 1/4"	7"	15"	3/4"	5"

0° x 30° SPIGOTTED CONVEYING DIVERTERS



RIGHT HAND UNIT SHOWN
LEFT HAND UNIT ALSO AVAILABLE

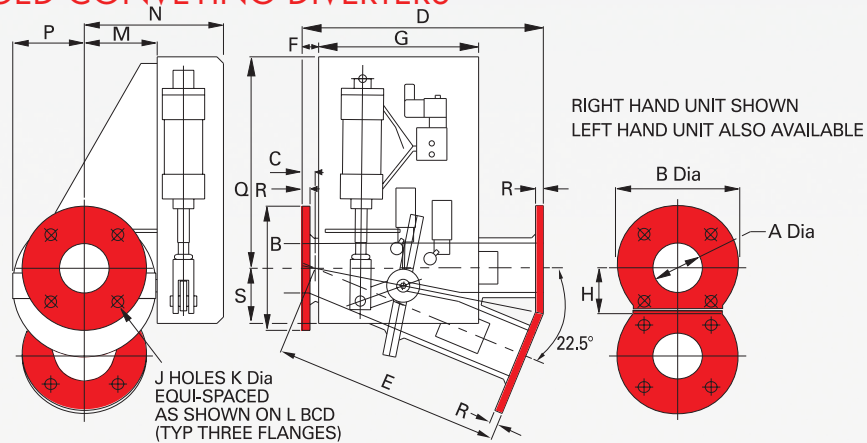
All dimensions are in inches

SIZE	A PIPE	B	C	D	E	F	G	H	J	K	L	M	N	P
2"	2" N/B	3 3/4"	3/4"	10 1/8"	9 5/16"	0"	9 7/8"	4"	3 5/8"	7 5/8"	3 1/2"	13 1/8"	3/4"	3"
2 1/2"	2 1/2" N/B	4"	3/4"	10 1/2"	9 3/4"	3/16"	9 3/4"	4"	4"	8"	4"	13"	3/4"	3 1/4"
3"	3" N/B	4 1/2"	3/4"	11"	10 1/4"	1"	9 5/8"	4"	4 3/8"	8 1/2"	4 3/8"	12 7/8"	3/4"	3 3/8"
4"	4" N/B	5"	1 3/16"	14 3/8"	13 1/8"	2"	11 1/4"	4"	5 1/2"	9 5/8"	5 1/2"	15 3/8"	3/4"	4 1/2"
5"	5" N/B	6"	1 3/16"	17 5/16"	16 1/8"	4"	11 1/4"	4"	6 3/8"	10 3/8"	6 3/8"	15"	3/4"	4 7/8"
6"	6" N/B	7 3/4"	1 3/8"	18 7/8"	17 1/2"	4 3/4"	11 1/4"	4"	7 1/4"	11 1/4"	7 1/8"	15"	3/4"	5"

Dimensions are approximate and subject to change without notice
 Planning-in detail for general guidance only
 (To cover safety aspects ask for our safety leaflets)
 Drillings are Rotolok standards. Variations can be made.



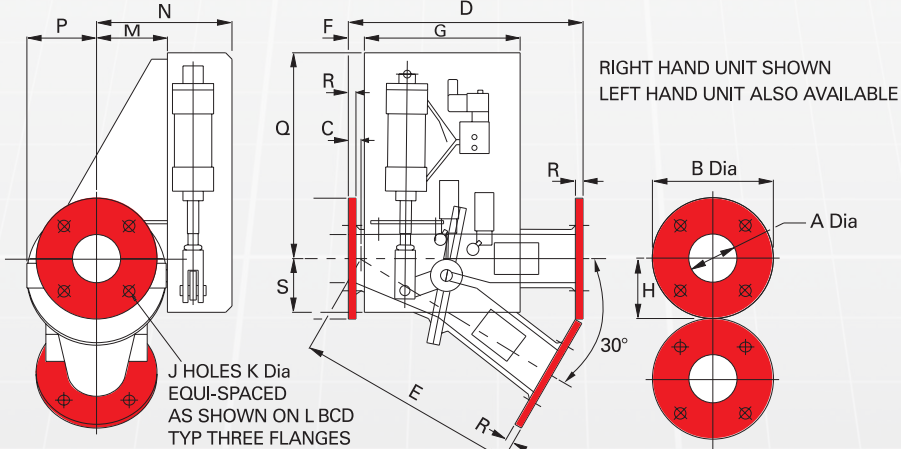
0° x 22.5° FLANGED CONVEYING DIVERTERS



All dimensions are in inches

SIZE	A Dia.	B Dia.	C	D	E	F	G	H	J	K	L	M	N	P	Q	R	S
1"	1"	4 1/2"	3/16"	9 7/16"	9 1/4"	7/8"	7 1/2"	1 3/4"	4	5/8"	3 3/8" (ASA)	2 1/2"	5 5/8"	2 3/8"	8 1/4"	3/8"	3 3/8"
2"	2"	6"	3/4"	12 1/4"	11 3/8"	0"	9 7/8"	2 1/4"	4	3/4"	4 3/4" (ASA)	3 5/8"	7 5/8"	3 1/2"	12 7/8"	3/8"	3"
2 1/2"	2 1/2"	7"	3/4"	13 3/4"	13"	3/16"	9 3/4"	2 5/8"	4	3/4"	5 1/2" (ASA)	4"	8"	4"	13"	3/8"	3 1/4"
3"	3"	7 1/2"	3/4"	14 5/8"	13 7/8"	1"	9 5/8"	2 3/4"	4	3/4"	6" (ASA)	4 3/8"	8 1/2"	4 3/8"	12 7/8"	1/2"	3 3/8"
4"	4"	9"	1 1/8"	22 3/4"	21 5/8"	2 1/8"	11 1/4"	4 1/4"	8	3/4"	7 1/2" (ASA)	5 5/8"	9 5/8"	5 1/2"	15 3/8"	1/2"	4 1/2"
5"	5"	10"	1 1/8"	25"	23 3/4"	4"	11 1/4"	4 3/4"	8	7/8"	8 1/2" (ASA)	6 3/8"	10 3/8"	6 3/8"	15"	1/2"	4 7/8"
6"	6 1/4"	11"	1 3/8"	29 7/8"	28 1/2"	4 3/4"	11 1/4"	5 1/8"	8	7/8"	9 1/2" (ASA)	7 1/8"	11 1/4"	7"	15"	5/8"	5"
8"	8"	13 1/2"	1 3/8"	35 1/2"	34"	6 1/4"	10 3/4"	6 1/8"	8	7/8"	11 3/4" (ASA)	8 3/4"	12 3/4"	8 3/4"	16 1/4"	5/8"	5 1/8"
10"	10 3/8"	16"	1 3/8"	41 5/8"	40 1/4"	9 3/8"	12 1/2"	7 3/4"	12	1"	14 1/4" (ASA)	11 1/8"	17 1/2"	11 5/8"	17"	3/4"	7"
12"	12"	19"	2 7/8"	51 5/8"	48 7/8"	9 5/8"	14 3/8"	9 1/2"	12	1"	17" (ASA)	11 7/8"	18 1/4"	12"	21"	1"	8"

0° x 30° FLANGED CONVEYING DIVERTERS



All dimensions are in inches

SIZE	A Dia.	B Dia.	C	D	E	F	G	H	J	K	L	M	N	P	Q	R	S
2"	2"	6"	3/4"	13 1/8"	12 1/4"	0"	9 7/8"	3"	4	3/4"	4 3/4" (ASA)	3 5/8"	7 5/8"	3 1/2"	13 1/8"	3/8"	3"
2 1/2"	2 1/2"	7"	3/4"	15 3/8"	14 1/2"	3/16"	9 3/4"	3 1/2"	4	3/4"	5 1/2" (ASA)	4"	8"	4"	13"	3/8"	3 1/4"
3"	3"	7 1/2"	3/4"	14 5/8"	14 5/8"	1"	9 3/4"	3 3/4"	4	3/4"	6" (ASA)	4 3/8"	8 1/2"	4 3/8"	12 7/8"	1/2"	3 3/8"
4"	4"	9"	1 1/8"	21 1/2"	20 1/4"	2"	11 1/4"	4 1/2"	8	3/4"	7 1/2" (ASA)	5 5/8"	9 5/8"	5 1/2"	15 3/8"	1/2"	4 1/2"
5"	5"	10"	1 1/8"	25"	23 5/8"	4"	11 1/4"	5"	8	7/8"	8 1/2" (ASA)	6 3/8"	10 3/8"	6 3/8"	15"	1/2"	4 7/8"
6"	6 1/4"	11"	1 3/8"	30"	28 3/8"	4 3/4"	11 1/4"	5 1/2"	8	7/8"	9 1/2" (ASA)	7 1/8"	11 1/2"	7"	15"	5/8"	5"
8"	8"	13 1/2"	1 3/8"	28 3/8"	26 3/4"	5 7/8"	10 3/4"	6 3/4"	8	7/8"	11 3/4" (ASA)	8 3/4"	12 3/4"	8 3/4"	16 1/4"	5/8"	5 1/8"
10"	10 3/8"	16"	1 3/8"	33 3/4"	32 1/2"	9 3/8"	12 1/2"	8"	12	1"	14 1/4" (ASA)	11 1/8"	17 1/2"	11"	17"	3/4"	7"

Dimensions are approximate and subject to change without notice
 Planning-in detail for general guidance only
 (To cover safety aspects ask for our safety leaflets)
 Drillings are Rotolok standards. Variations can be made.

