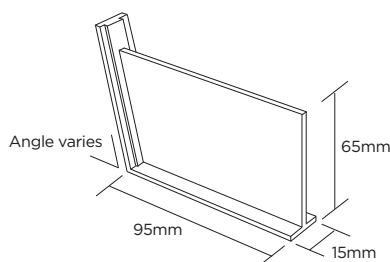
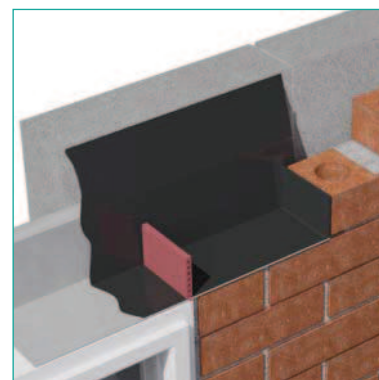




Lintel stopends

A range of profiles to protect modern steel lintels



Use

- On steel lintels situated in external walls
- On external walls - not exceeding 102.5mm in thickness - built in standard brick, block or stone

Features and benefits

- Purpose made and pre-formed to guarantee an accurate fit on most popular types of steel lintel
- Far more accurate and reliable than site-formed stopends, or than folding up the ends of the over-lintel DPC
- Factory fitted butyl mastic seal ensures a secure and watertight bond to the lintel
- A range of six profiles to suit varying lintel splay angles

Quality

- Satisfies all NHBC requirements
- Manufactured to BS EN ISO 9001 and BS EN ISO 14001
- Complies with all relevant Building Regulations
- Meets all relevant British Standards

Material and colour choice

- All lintel stopends are injection moulded in polypropylene
- Available in black only

Installation advice

- Use wherever water could collect on an external lintel. Designed to prevent water running off the ends of the lintel and back into the cavity
- To work effectively lintel stopends should be placed directly on top of the front flange of the lintel, or over-lintel DPC, as close to the ends as the brick bonding will allow
- The area on the lintel where the lintel stopends are placed must be clean and dry otherwise the pre-applied butyl mastic tape will not seal correctly

Please see technical section for more details.

How to order

- Two stopends are required per lintel
- Check the type of stopend required from the product selection table
- State the lintel make, model number, length and height on your order and Timloc will advise which stopend is appropriate

Bill of quantity

NBSPlus

F30 Accessories/sundry items for brick/block/stone walling

Clause

485* CAVITY TRAYS OVER OPENINGS AND OTHER CAVITY BRIDGINGS
To be installed at each end of Cavity Tray over lintels/bridgings.

• Manufacturer: **Timloc Building Products, Rawcliffe Road, Goole, East Yorkshire, DN14 6UQ. Tel: 01405 765567, Fax: 01405 720479. Web: www.timloc.co.uk**

• Reference: LS01-06 Lintel Stopends to suit (specified lintel type and size)



LS01



LS02



LS03



LS04



LS05



LS06

Others

Please consult Timloc Technical Department