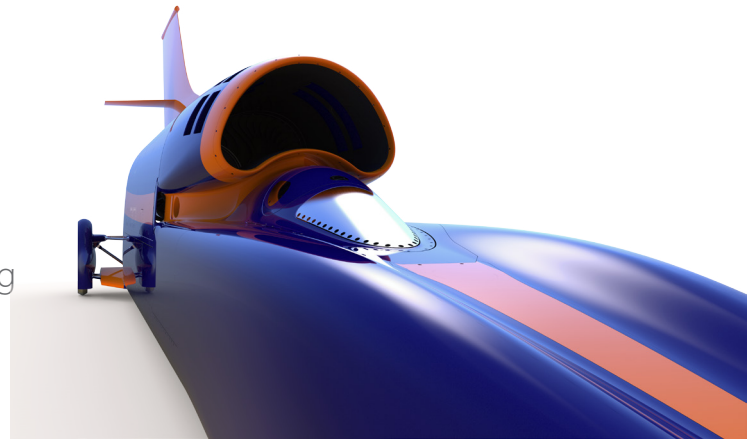


# FeatureCAM 2016

Feature-based CAM software for mills, multi-tasking lathes and wire EDM

[www.featurecam.com](http://www.featurecam.com)



## FeatureCAM 2016

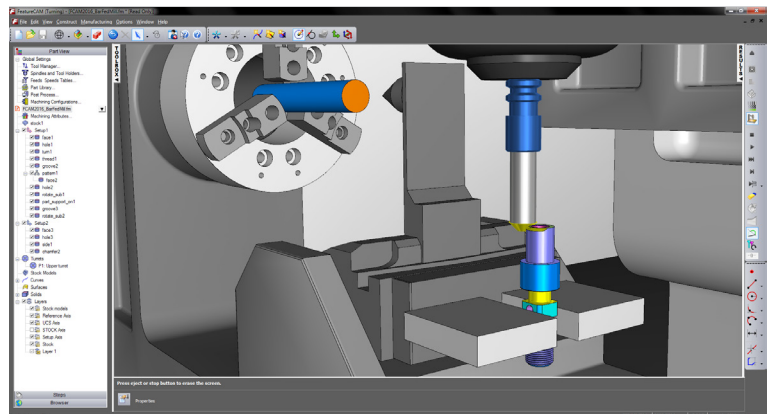
- high quality machining, short programming time.

FeatureCAM 2016 delivers a wide range of new features and improvements including added control for 2.5D groove features, reductions in the machining time of 2.5D and 3D Vortex toolpaths and dynamic stock models for 3D roughing.

With support for multi-tasking bar-fed milling machines and increased complexity for turning head simulation, FeatureCAM 2016 addresses the most advanced machining environments, helping you create parts quickly to the standard you and your customers demand.

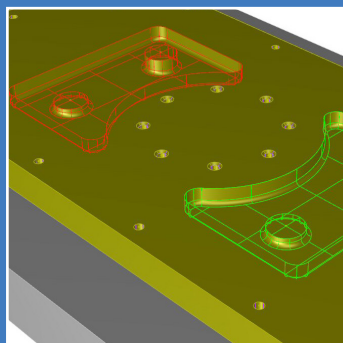
New features and enhancements include:

- User interface improvements
- FeatureRECOGNITION setup creation
- Nesting
- Autodesk RealDWG Import
- New Inside/Outside Groove toolpath
- 2.5D and 3D Vortex non-cutting moves
- Dynamic stock for roughing
- Swarf Z limits
- Bar fed mills
- Realistic turning heads
- Automatic tool orientation



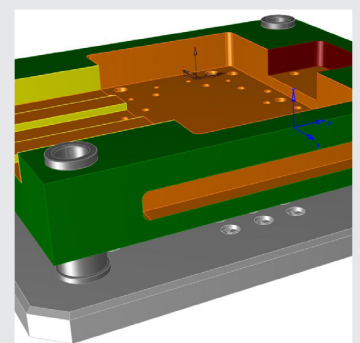
### User Interface Improvements

Highlight part view items with your cursor in the graphics screen to quickly and easily find and select desired items. Additionally, change the tool colour during simulation with a toolbar button or menu item.



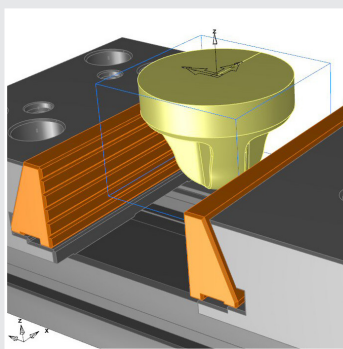
### FeatureRECOGNITION Setup Creation

Reduce your programming times by rapidly creating additional setups during FeatureRECOGNITION via a new button in the Feature Wizard.



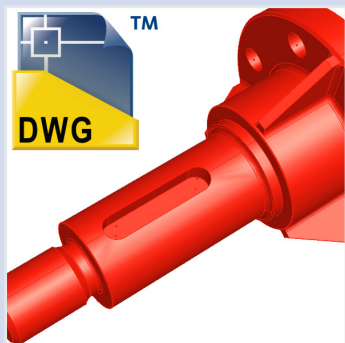
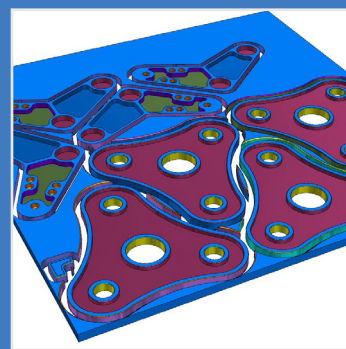
## Vice Import And Alignment

Quickly import and align pre-defined vices and chucks into your FeatureCAM project. This helps reduce your programming times and improves collision checking, by automatically setting imported devices as clamps.



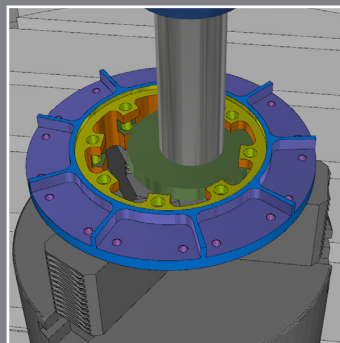
## Nesting

Use FeatureCAM with PowerSHAPE to select your machining files and nest them in a single block to maximise stock material usage efficiency.



## Autodesk RealDWG Import

Quickly import Autodesk RealDWG files into FeatureCAM and benefit from support for DWG solid model import.

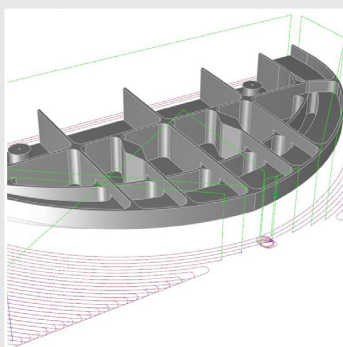


## New Inside/Outside Groove Toolpath

Fine-tune your Inside/Outside Groove toolpaths with new options for rough stepover type, wind-fan and start points for finishing, and gouge checking for plunge and retracts, in addition to support for tool radius and partline cutter compensation.

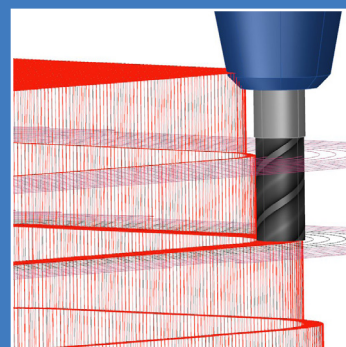
## Vortex Non-Cutting Moves

Adjust the non-cutting moves of your 2.5D and 3D Vortex toolpaths, with options to retract and lift or increase the feedrate, to optimise your toolpaths and reduce cutting time.



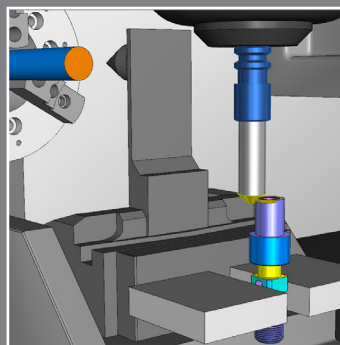
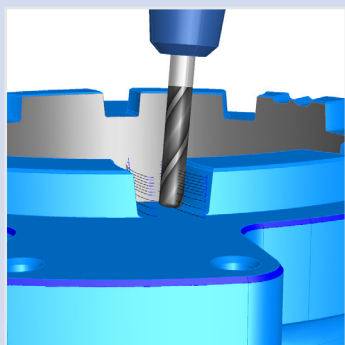
## Dynamic Stock For Roughing

Keep your Z-Level Roughing toolpaths completely free of tool holder collisions by taking into account any remaining stock on a model, with Holder Collision Clipping.



## Swarf Z Limits

Control the upper and lower Z limits of a 5-axis simultaneous swarf toolpath to overcome tool length limitations, or when you wish to vary the stepdown for different segments of the swarf.

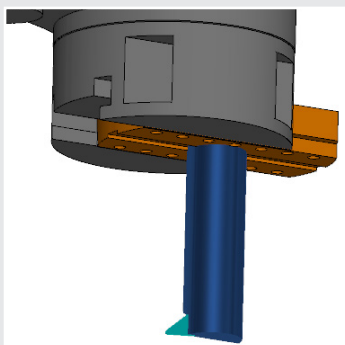


## Bar Fed Mills

Program your multi-tasking bar-fed milling machines with FeatureCAM. Access the back working area by setting the swivel angle, and utilise cut-off operations that use milling tools.

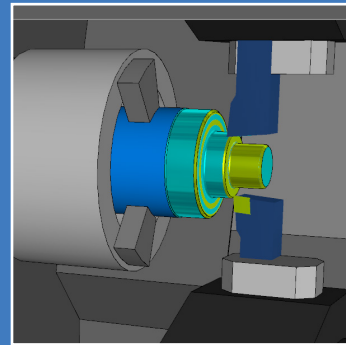
## Realistic Turning Heads

Define more complex turning head tool holder models in the Machine Design file, and assign your tools to the holders via the tool mapping.



## Automatic Tool Orientation

Simplify the turning tool selection process with the ability to automatically use a single tool in multiple orientations, minimising your tool crib size and reducing the time taken to program parts.



DID YOU  
KNOW



A new version of FeatureCAM is released every 4 months.

# LEARNING ZONE

Visit [www.delcam.tv/lz](http://www.delcam.tv/lz) and see how Delcam software could benefit your business!

