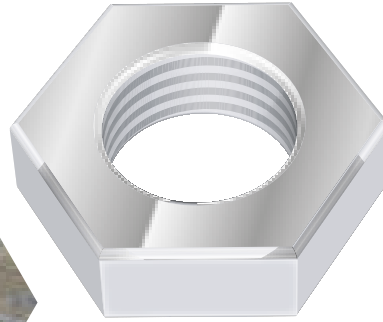


Gatwick Airport - North Terminal



Value £150,500

Build period 12 weeks

Client SPIE

Contents:

- ✓ Weatherproof enclosure 6.0 x 3.7 x 3.0 metres high
- ✓ 2no.off Hamworthy MTHW boilers model Ansty
- ✓ Flue system through roof
- ✓ Circulating twin head pumps
- ✓ Pressurisation unit c/w 300 litre expansion vessel
- ✓ 100mm dia Combined air & dirt separator
- ✓ Chemical dosing pot
- ✓ MTHW Heating flow & return, & cold water services
- ✓ Thermal insulation & protective cladding
- ✓ Internal lighting, emergency lighting, & small power
- ✓ BMS Controls & wiring

See reverse for schematic arrangement and general layout.

